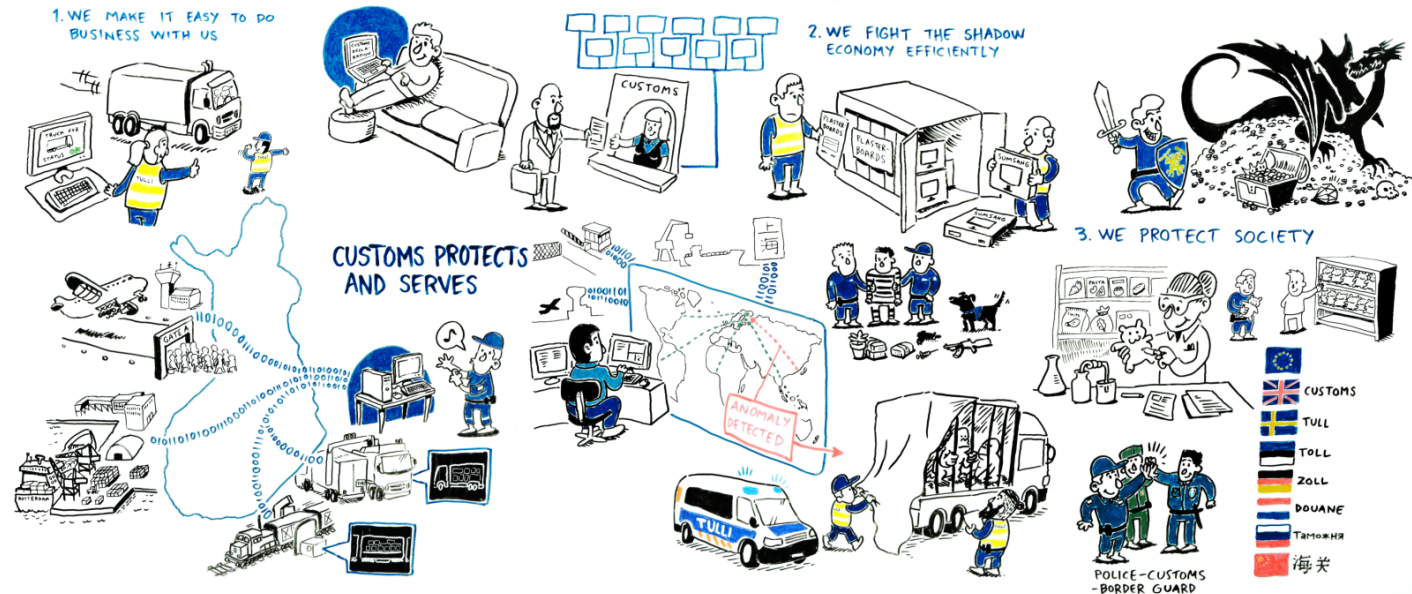




Annual survey 2017



[Watch video](#)



With ease and correctness – security through cooperation

Finnish Customs

- facilitates smooth trade of goods and ensures its correctness
- collects taxes on goods efficiently
- offers customer-oriented services
- protects society, the environment and citizens.

These strategic aims in the Government programme concern Finnish Customs in particular:

- sustainable growth and savings in public finances
- digitalisation and deregulation
- objectives concerning the management of changes in the security environment.

With ease and correctness – security through cooperation

SOCIETAL IMPACT OBJECTIVES (society, customers)

**Customer
orientation**

Shadow economy

**Goods safety and
crime prevention**

RESULTS OF ACTIVITIES (organisation, structure, processes, quality and infrastructure)

**Independence of
time and location**

Customs' processes

Cooperation

Resources (personnel and economic resources)

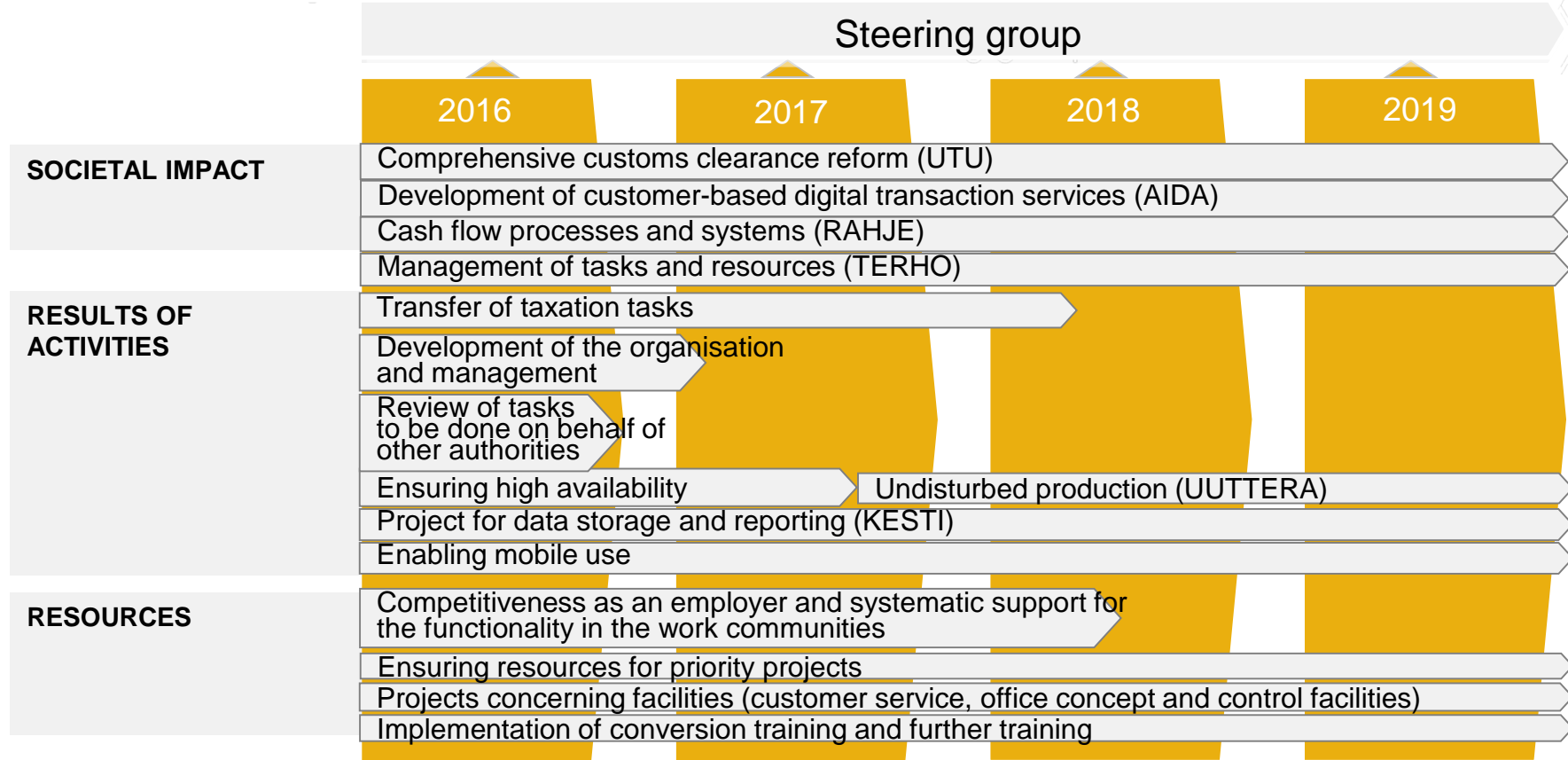
Management

**Professional
skills**

Job satisfaction

Prioritisation

Main development programmes 2016–2019

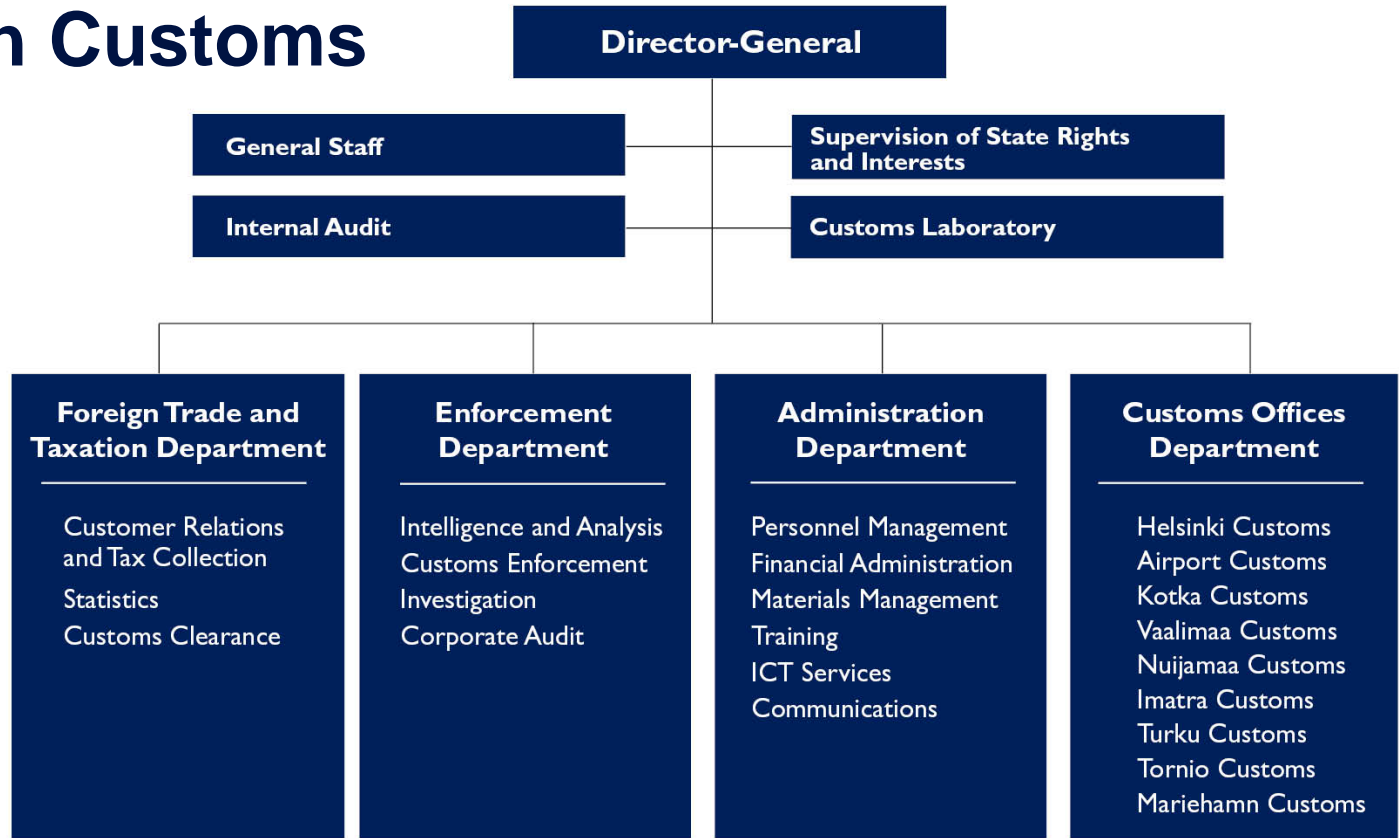


Customs 2020

Joint vision of goals and areas of focus



Organisation of Finnish Customs



as of 1 March 2018

Personnel and customs offices

At the end of 2017,
Finnish Customs had
1 887 employees.
45% of them were women
and 55% men.



Total revenue collected by Finnish Customs

2.9 billion euros

The amounts of nearly all the taxes and charges collected by Customs increased in 2017. The tax arrears amounted to 1.9 million euros (0.07%).

The largest tax revenues in 2017 and 2016

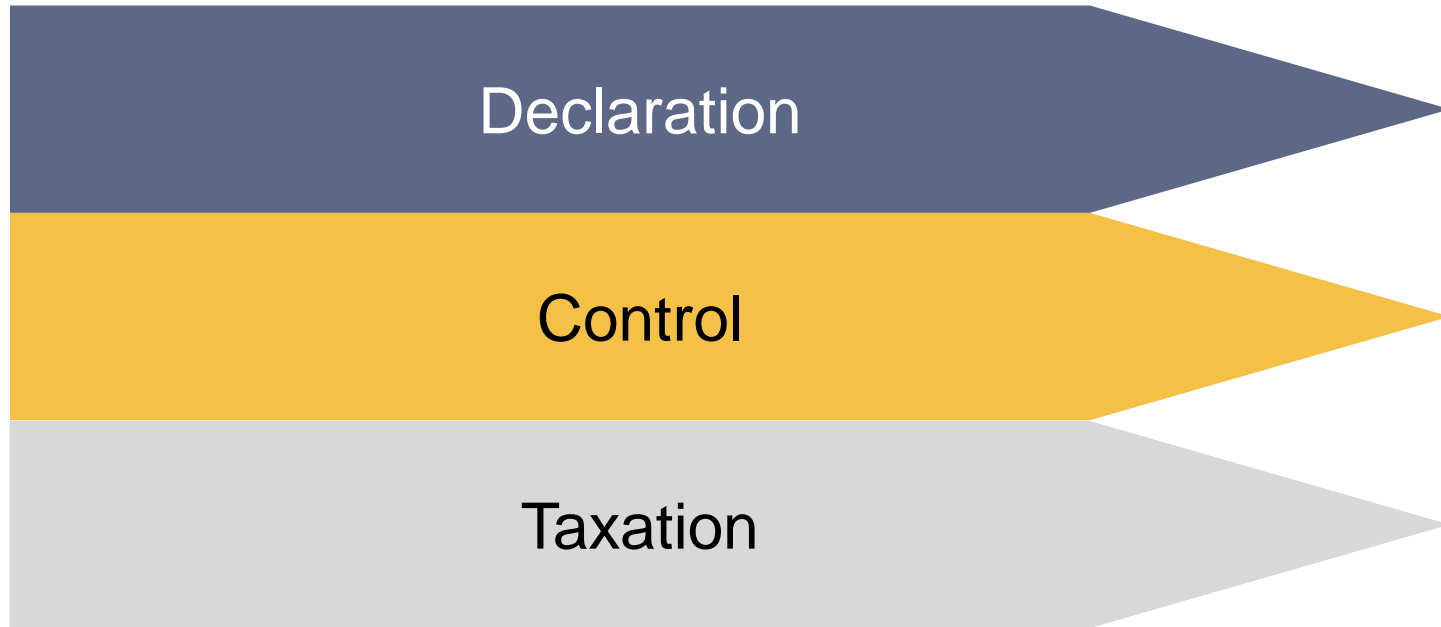
	2017	2016
Import VAT	€2.69 billion	€2.37 billion
Customs duties and similar charges	€174 million	€163 million
Fairway dues	€47 million	€46 million
Service charges etc.	€3 million	€4 million

What increased the most, by more than 300 million euros, was the revenue from the import VAT. The revenue from customs duties increased by 11 million euros. The revenue from fairway dues increased by one million euros from 2016. Customs collected one million euros less in service charges and other similar charges than the year before.

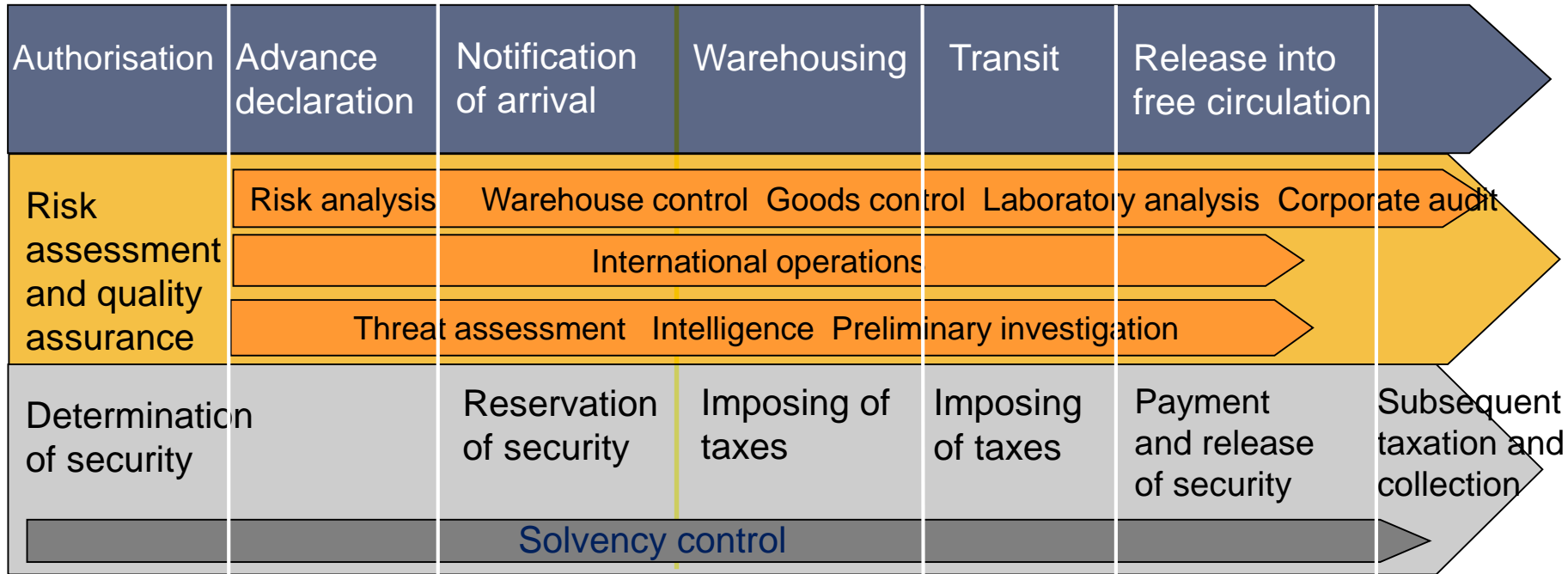
Declarations submitted in Finland

Import declarations	829 631
Export declarations	966 094
Entry summary declarations	459 209
Exit summary declarations	87 180
Ship declarations	36 836
Summary declarations for temporary storage	346 561
NCTS transit declarations	116 550
Electronic copies of NCTS-TIR declarations	11 955

Measures by Customs aimed at goods flows



Measures by Customs aimed at goods flows



Customs controls at borders

Border controls	281 622
Passenger controls	72 787
Controls of traffic safety	60 531
Vehicle inspections	53 309
X-ray controls – large units	40 983
➤ Controls of packages of online trade goods through methods integrated with traffic flows and of technology.	
Inspections with dogs	29 914
Enforcement processes resulting in criminal processes or administrative sanctions	12 921
➤ In addition: extensive radiation controls as well as automatic recognition of registration plates and containers at border crossing points.	

Cooperation areas of Finnish Customs

WCO

EU

Russia

Cooperation with customers

Cooperation between authorities

Police, Customs and Border Guard (PCB)

Areas of PCB cooperation

PCB criminal intelligence centres

Target selection procedure and joint investigation teams

Combat against the shadow economy

Controls of passenger traffic

Combat against terrorism

Coordination between Customs and the Border Guard at border crossing points

Controls of heavy vehicles

The HARVA project

Technology (LIPRE, X-ray, IT)

EU coordination

Customs' role in enforcement cooperation

Ministry Finance	Tax Administration, Statistics Finland	Tax control, corporate audit, shadow economy, statistics cooperation
Interior	Police, Border Guard	PCB, crime prevention, weapons, cash, border controls
Transport and Communications	Finnish Transport Safety Agency (Trafi) Finnish Communications Regulatory Authority (FICORA)	Controls of heavy traffic, safety measures at ports (ISPS), radio equipment and telecommunications terminal equipment
Agriculture and Forestry	Food Safety Authority (Evira) Agency for Rural Affairs (Mavi)	FEOGA, foodstuffs, plant and animal diseases
Foreign Affairs	Department for External Economic Relations Political Department	Dual use products including weapons of mass destruction, international trade regulations (e.g. customs value and origin)
Social Affairs and Health	Medicines Agency (Fimea) Supervisory Authority for Welfare and Health (Valvira) Radiation Safety Authority (STUK)	Narcotics, medicines, alcohol, tobacco, snus radioactive materials
Education	Copyright organisations Finnish Heritage Agency	Copyrights, objects of cultural value
Environment	Environmental Administration (SYKE)	Waste, chemicals, CITES
Employment and the Economy	Safety Technology Authority (Tukes) Finnish Patent and Registration Office	Chemicals, consumer goods, explosives, intellectual property rights
Defence	Ministry of Defence	Defence materiel
Justice	The Office of the Prosecutor General	Preliminary investigation, charge issues

Goods controls and corporate audits

Control inspections and goods controls	66 978
Warehouse controls	268
Corporate audits	93
Document control reports	211
Extensive control reports	154

Counterfeit products

There were a total of 478 267 suspected counterfeit products, and the value of those resulting in further measures was 49 035 euro.

The stopped products included, among others, children's toys, car spare parts, spare parts for sporting goods, game consoles as well as shoes and clothes.

Customs crime prevention

Customs uncovers and investigates offences. Emphasis on the prevention of serious crime and economic crime.

Uncovered offences	9 409
Narcotics offences	3 229
➤ aggravated offences	271
Tax frauds	1 086
Medicine offences	742
Economic offences	145
Impact	€81.14 million

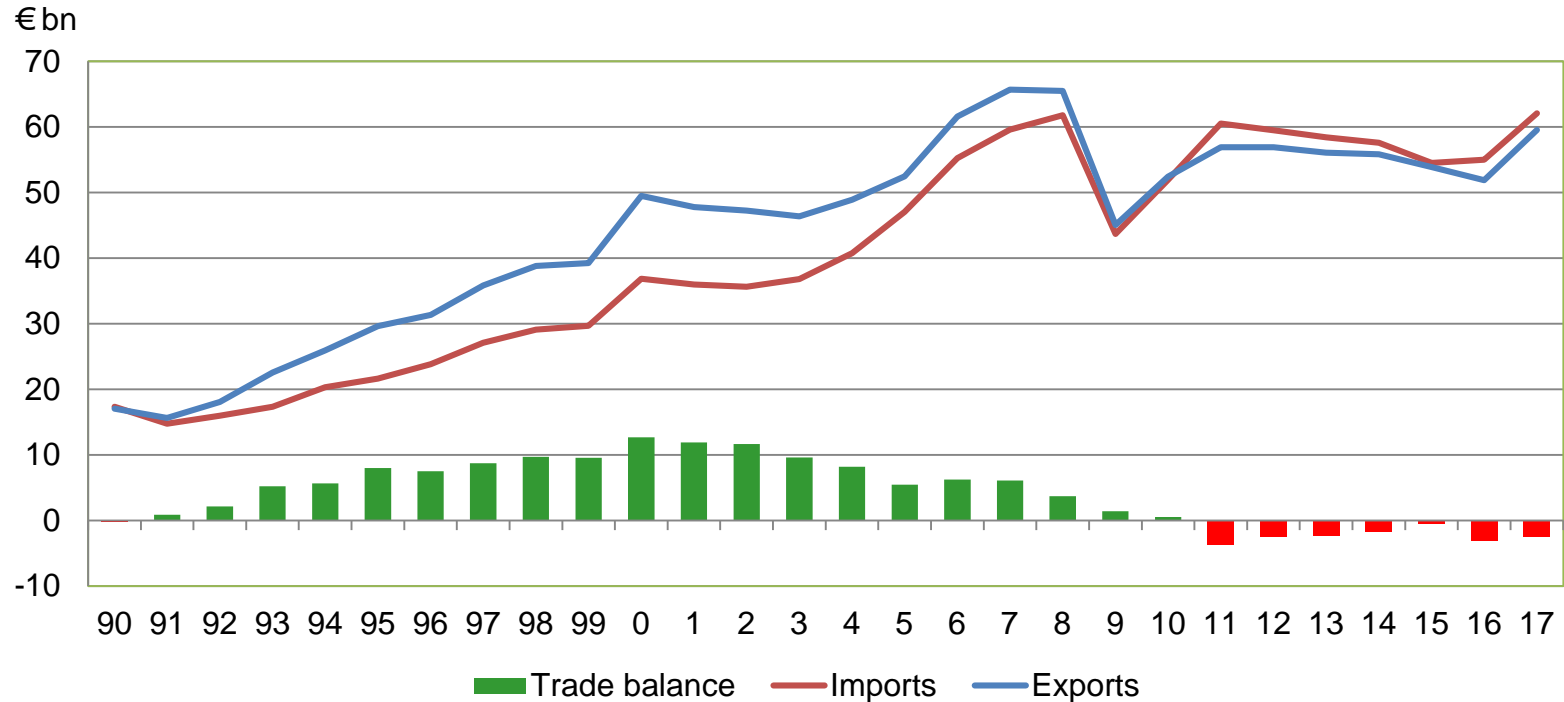
90 % of illegal medicines arrive as online orders. In 2017, Finnish Customs seized 265 406 tablets of medicines (225 564 tablets in 2016).

Customs Laboratory

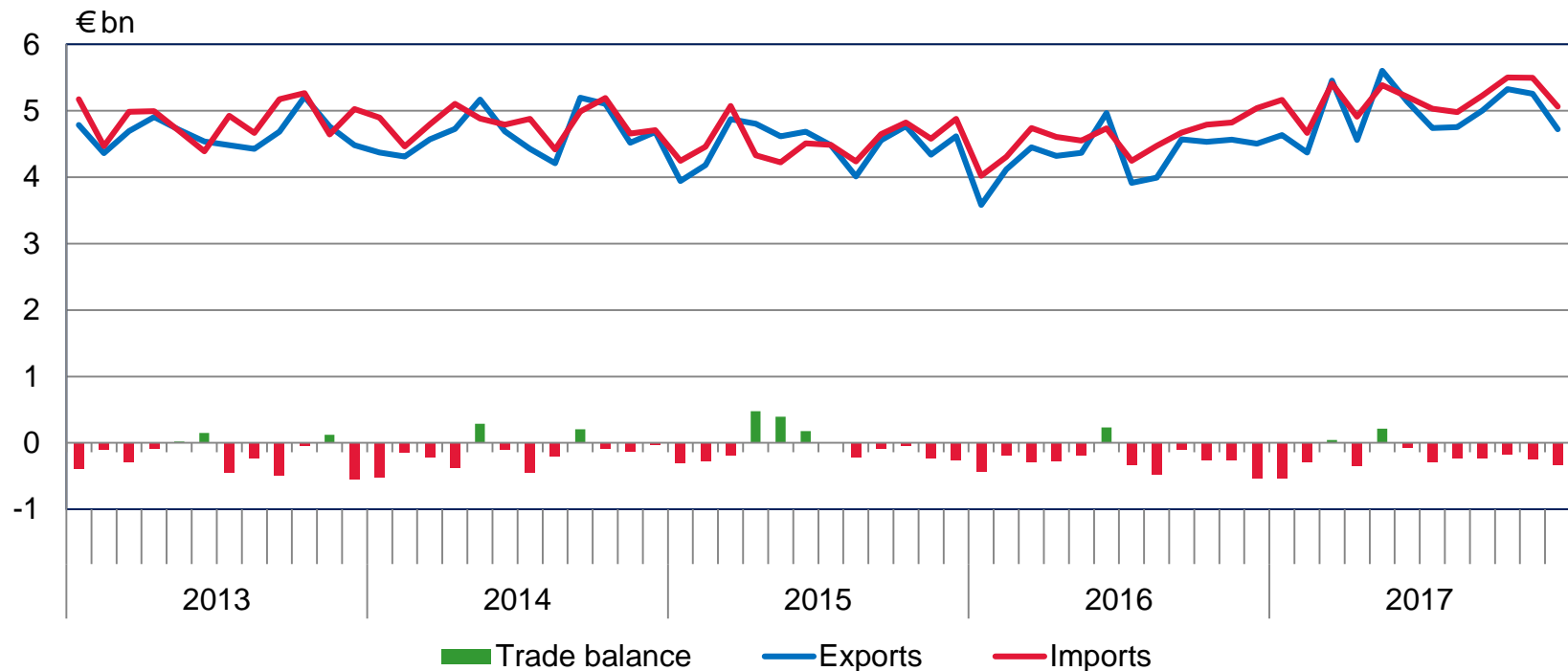
Examinations connected to suspected offences	7 946	46%
Food control	3 192	18%
Consumer goods control	1 539	9%
Checks on conformity of fruit and vegetables	1 605	9%
Phytosanitary controls	1 342	8%
Fuel examinations	985	6%
Other customs technical examinations	114	1%
Economic inspections	655	4%
Total	17 378	

More than 44 000 laboratory examinations producing more than 840 000 results.

Exports, imports and trade balance 1990–2017

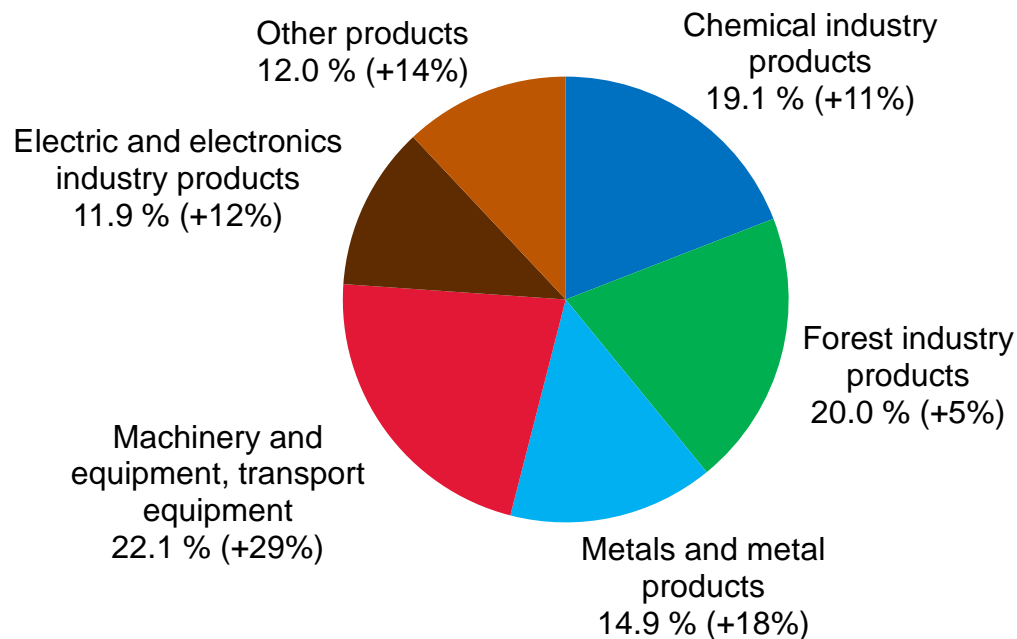


Exports, imports and trade balance by month 2013–2017



Export by products by activity (CPA) 2017 (1–12)

Share of exports and change in value (%) compared to the previous year



Foreign trade by country 2017

according to total trade volume

