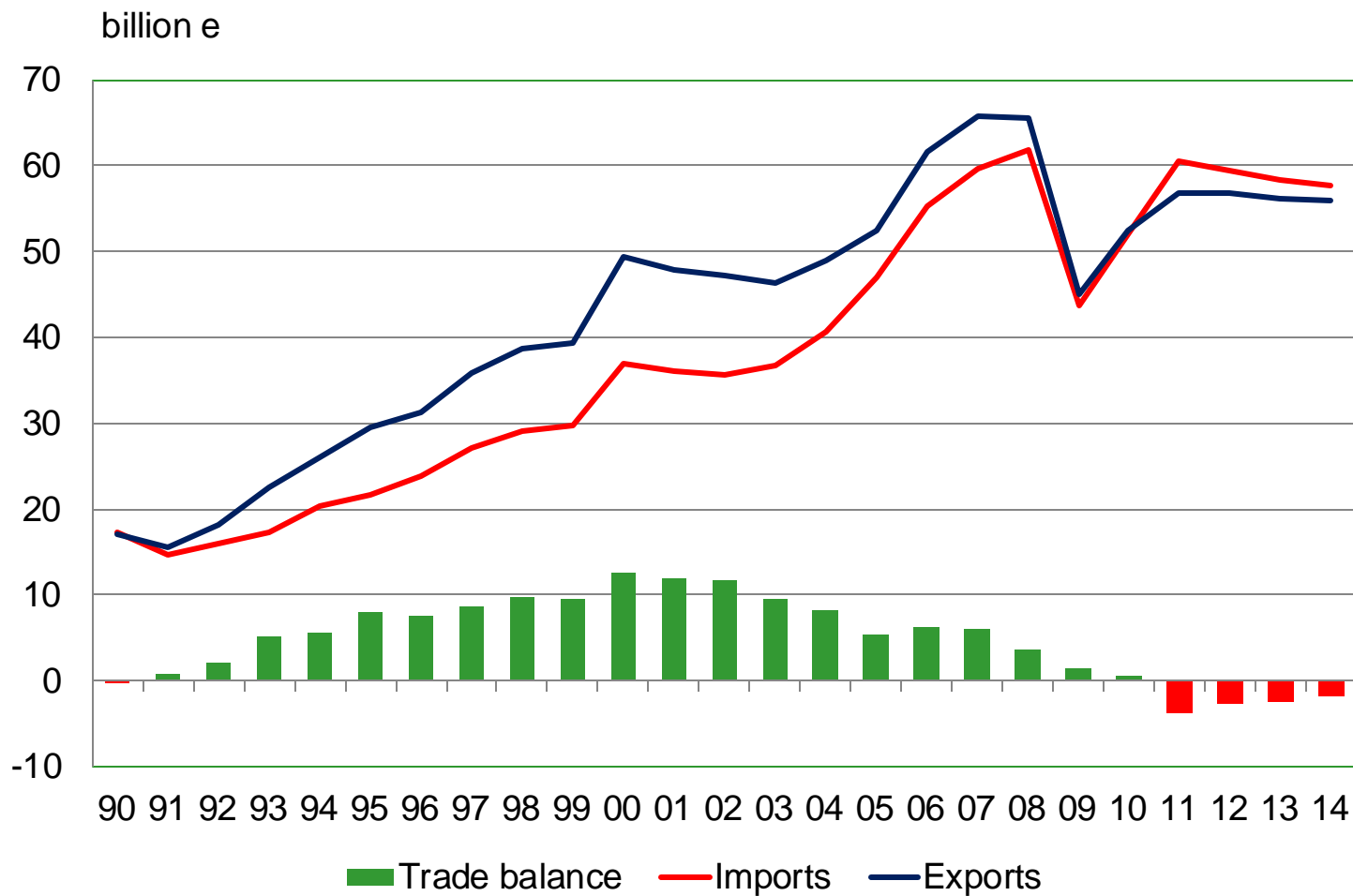
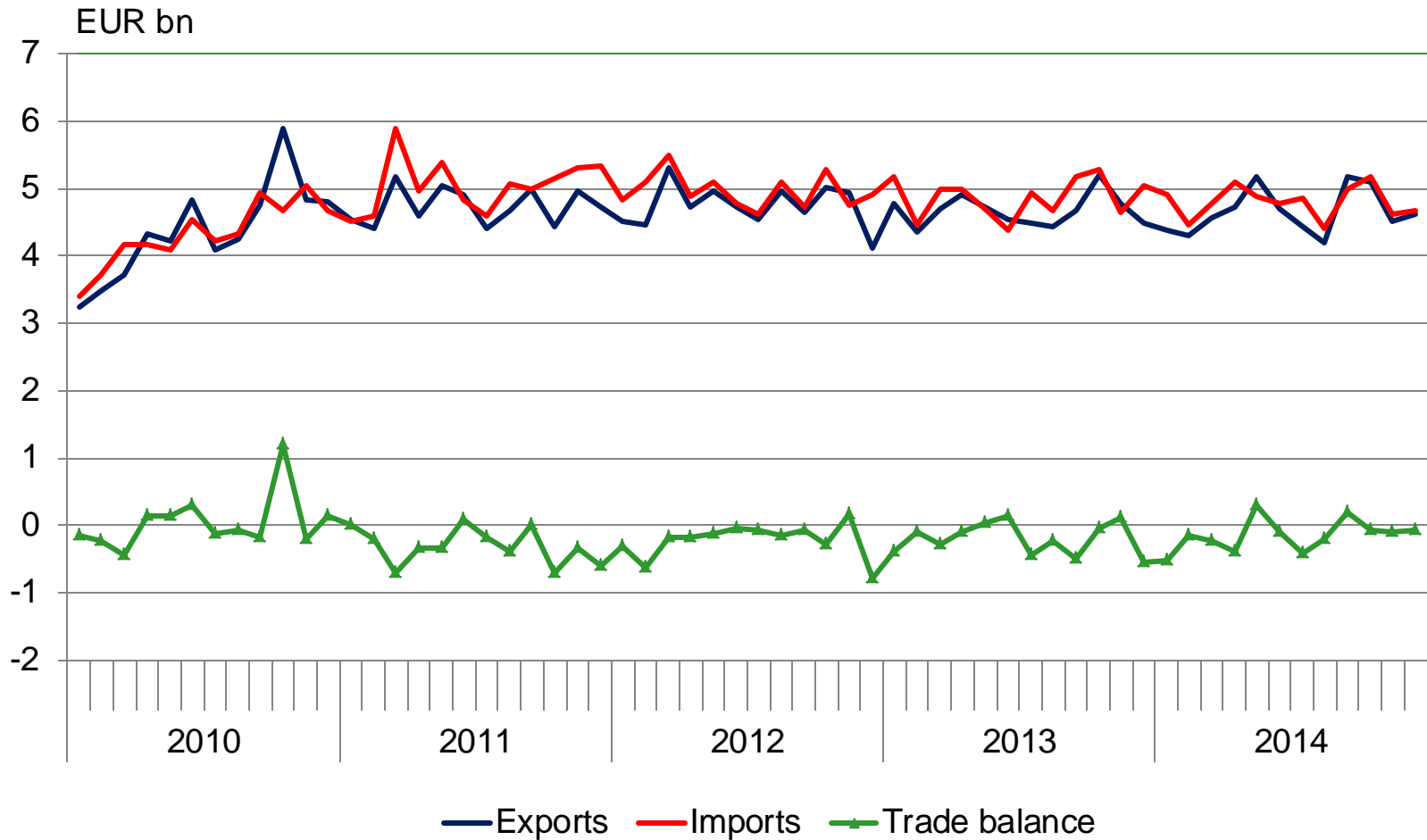


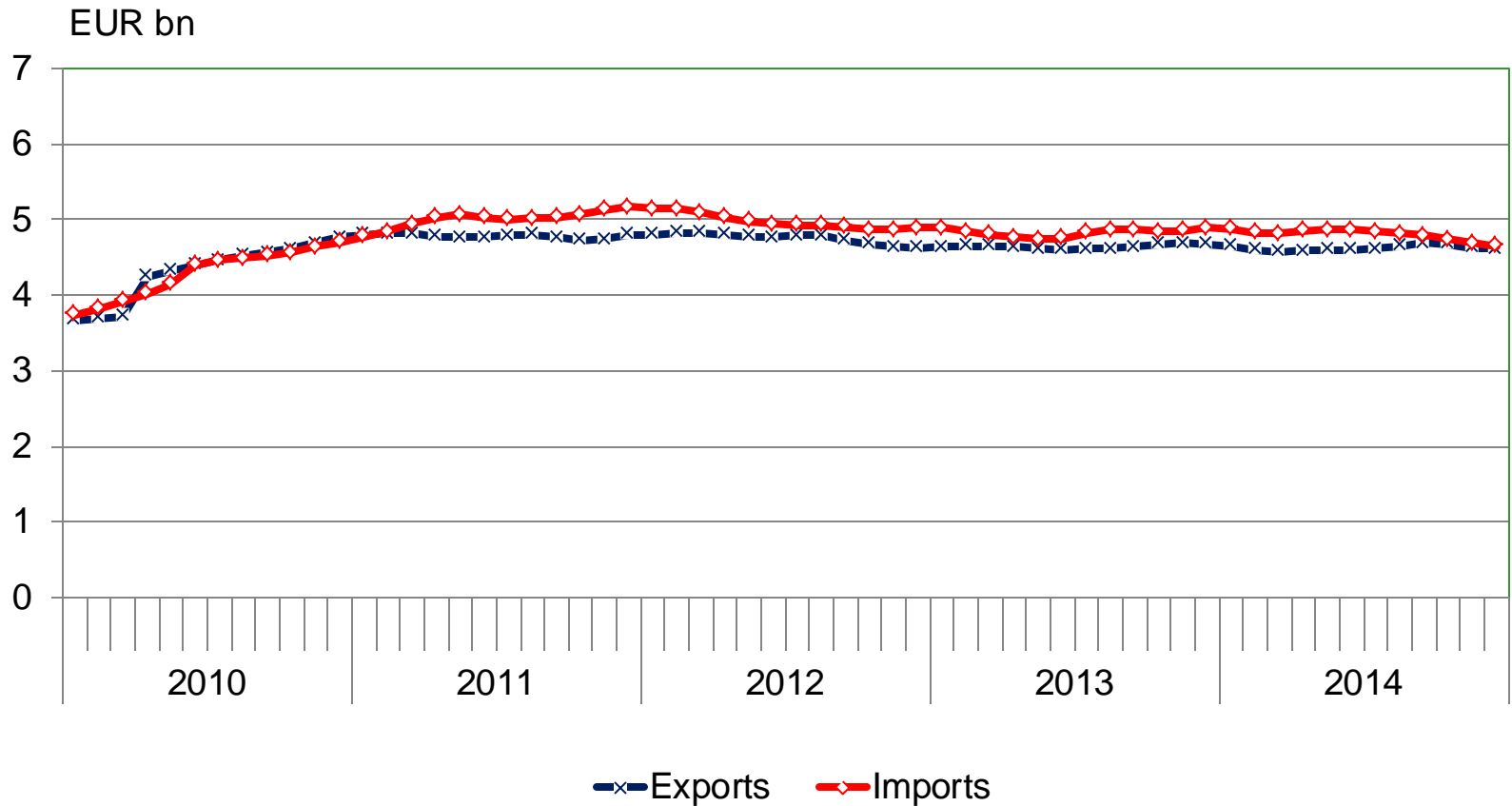


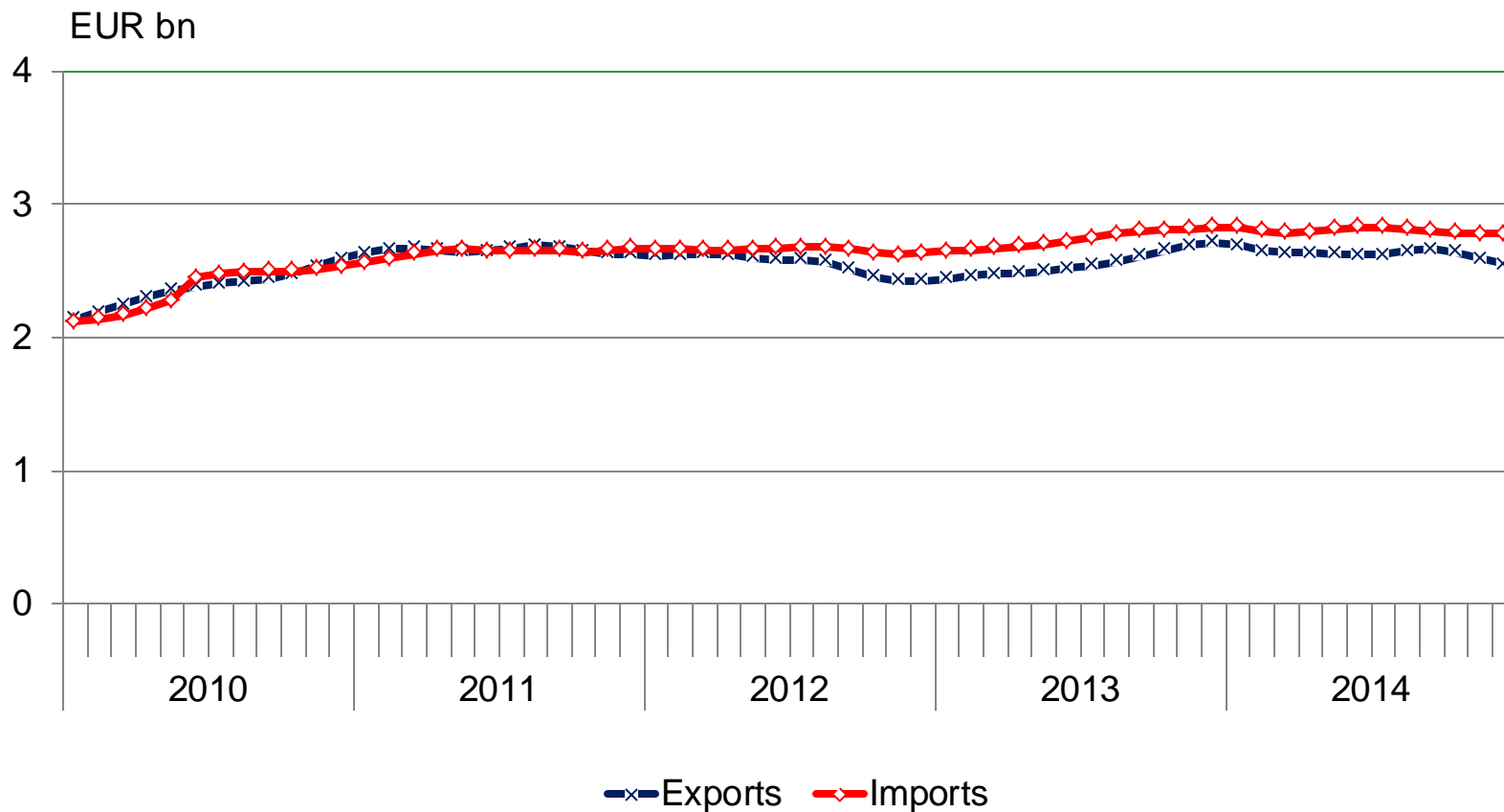
Finnish foreign trade 2014

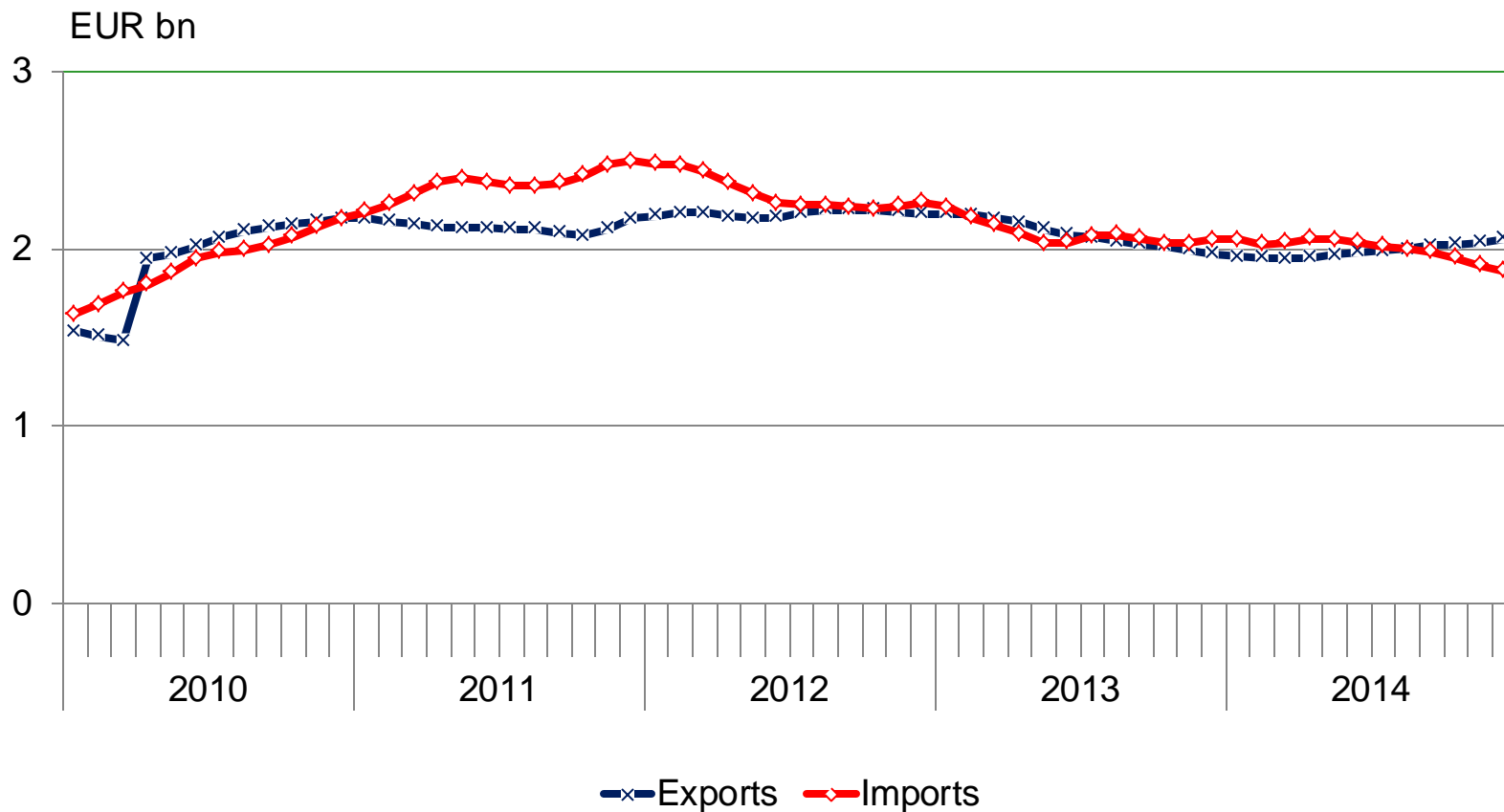
Figures and diagrams

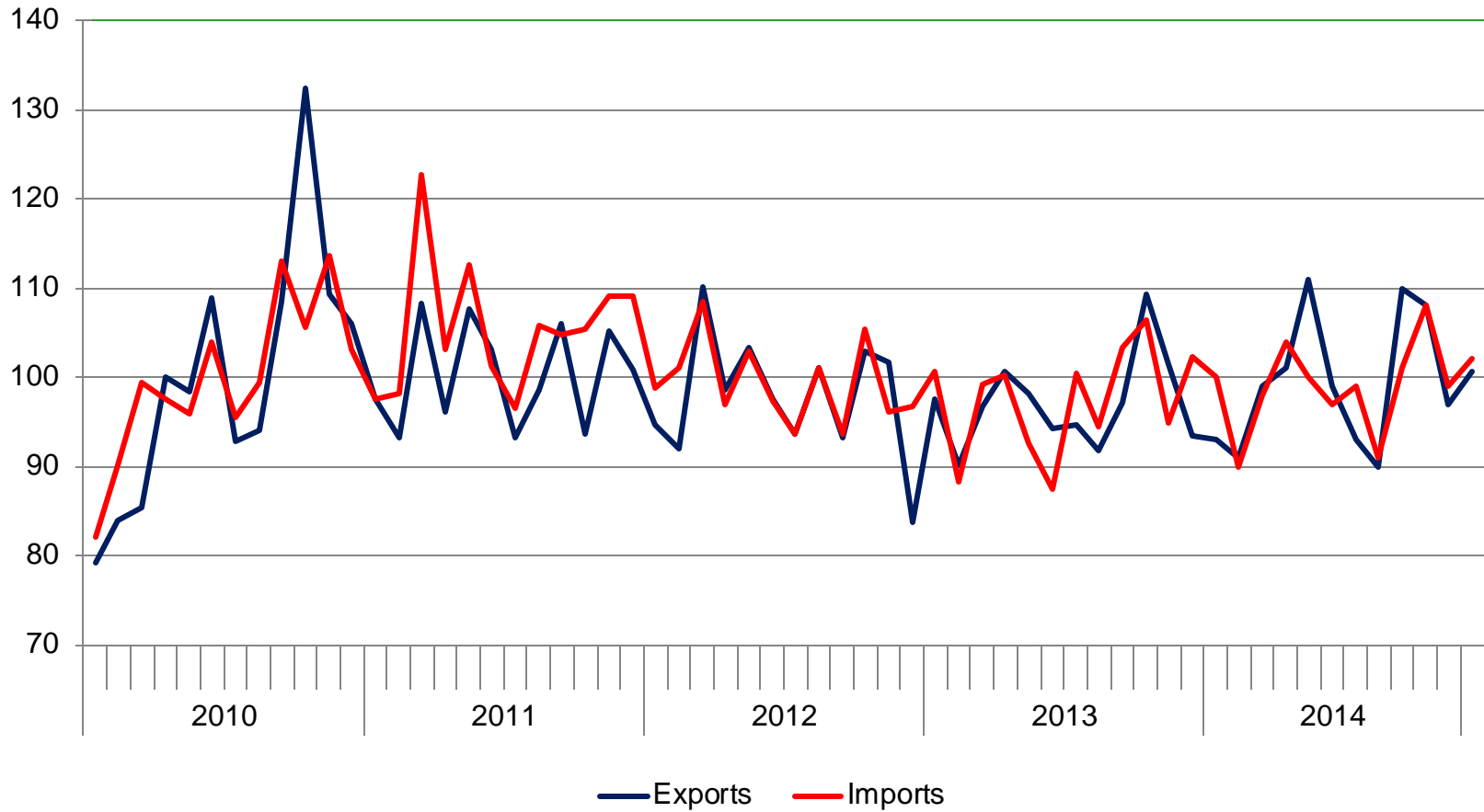


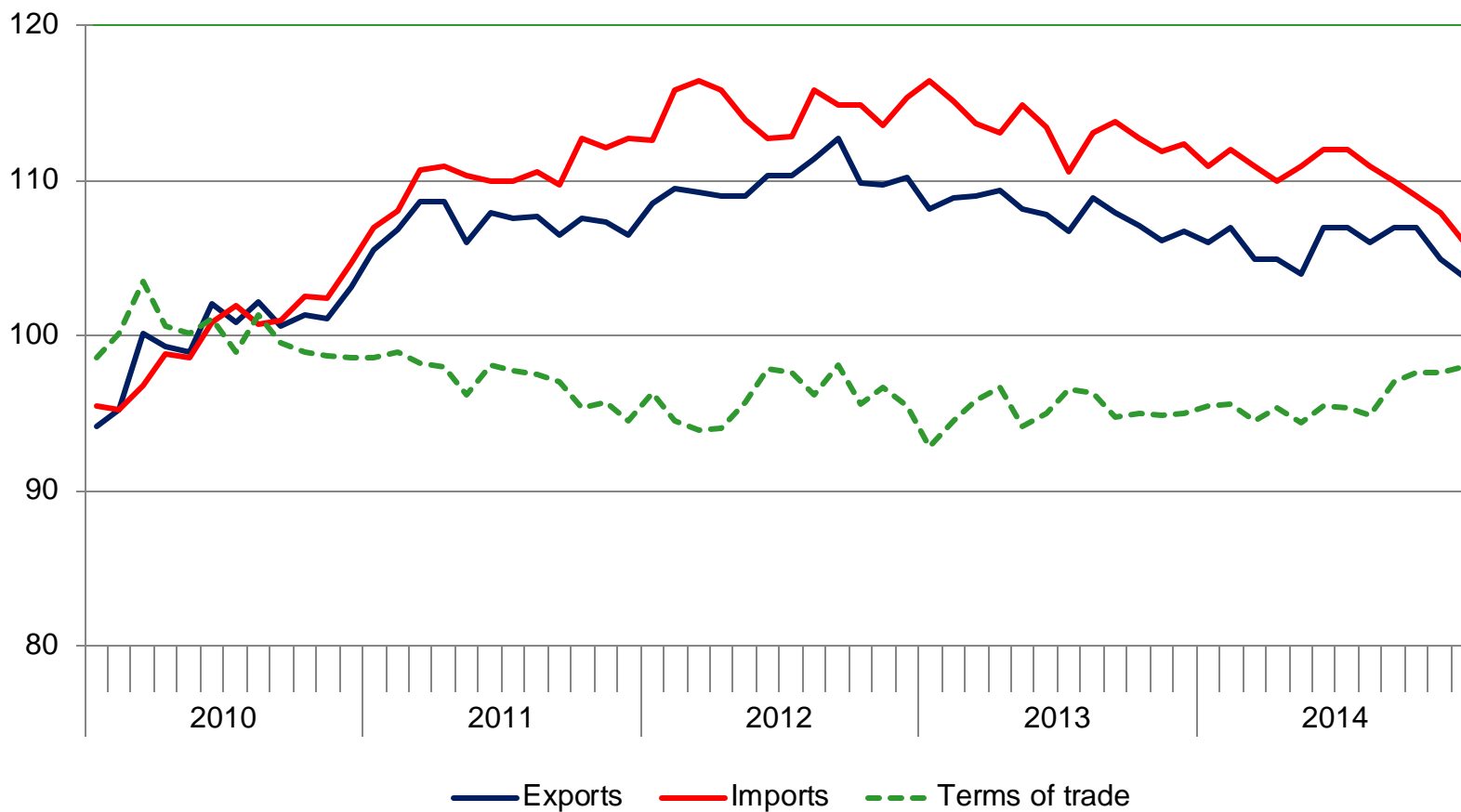


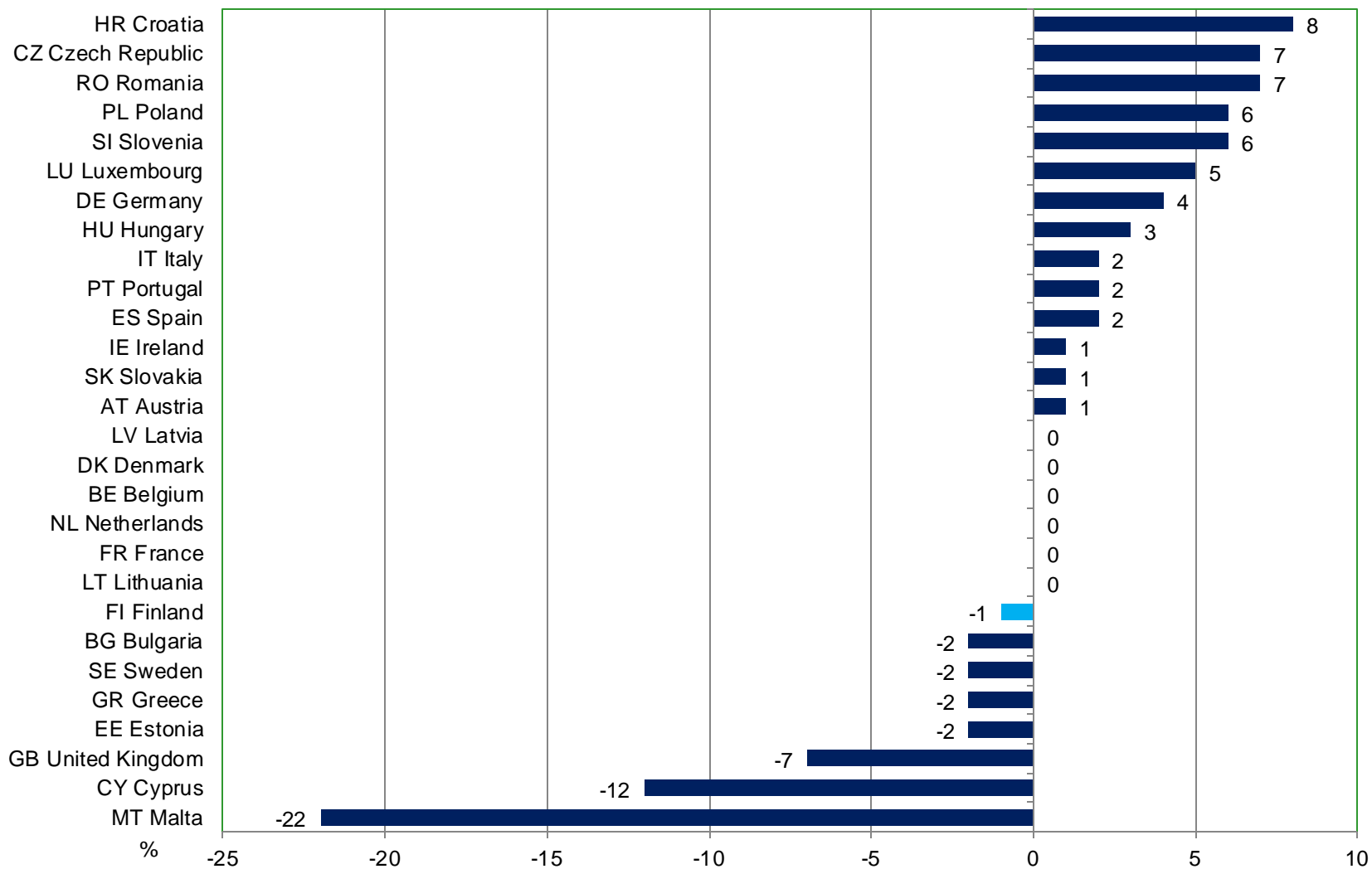


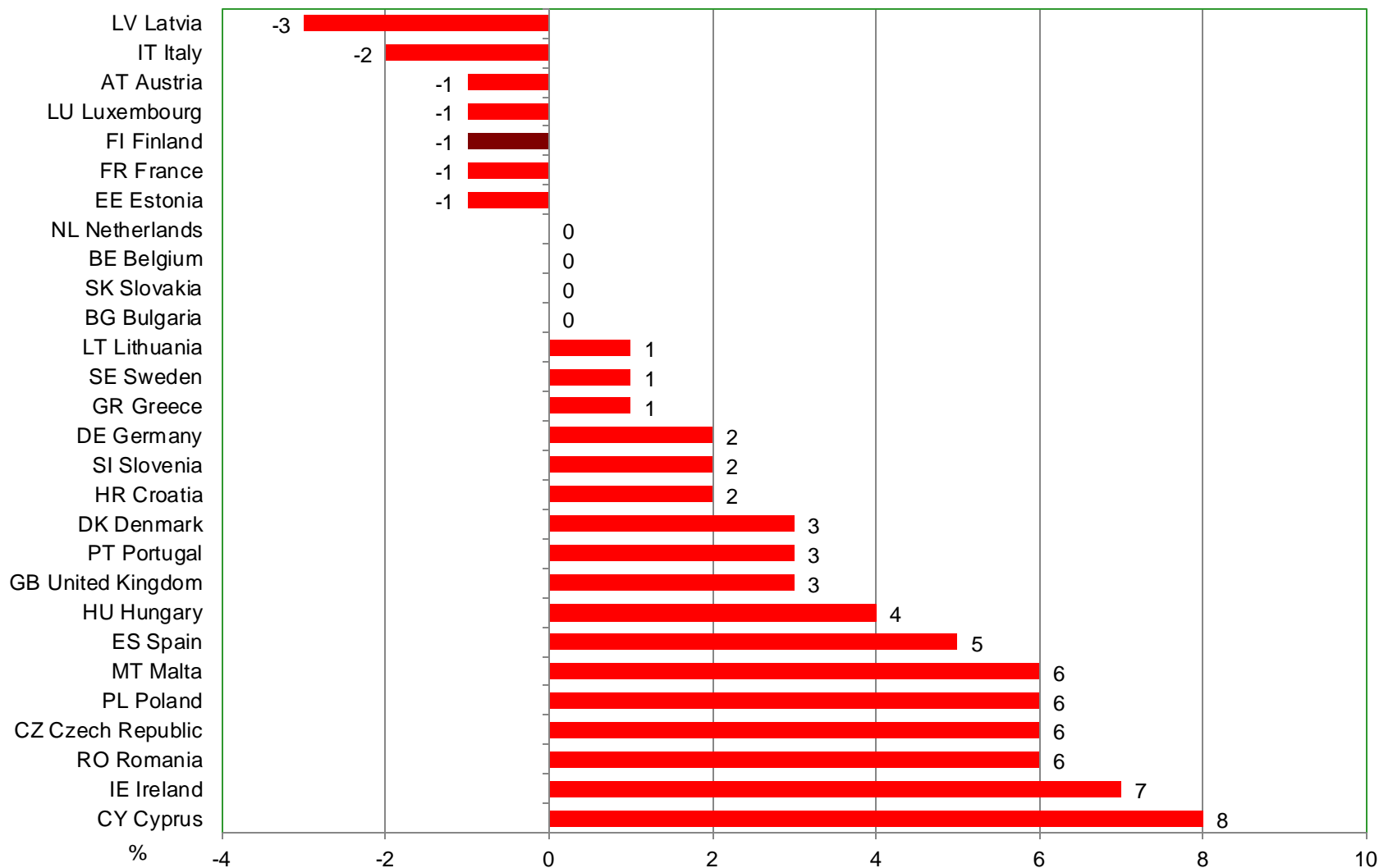


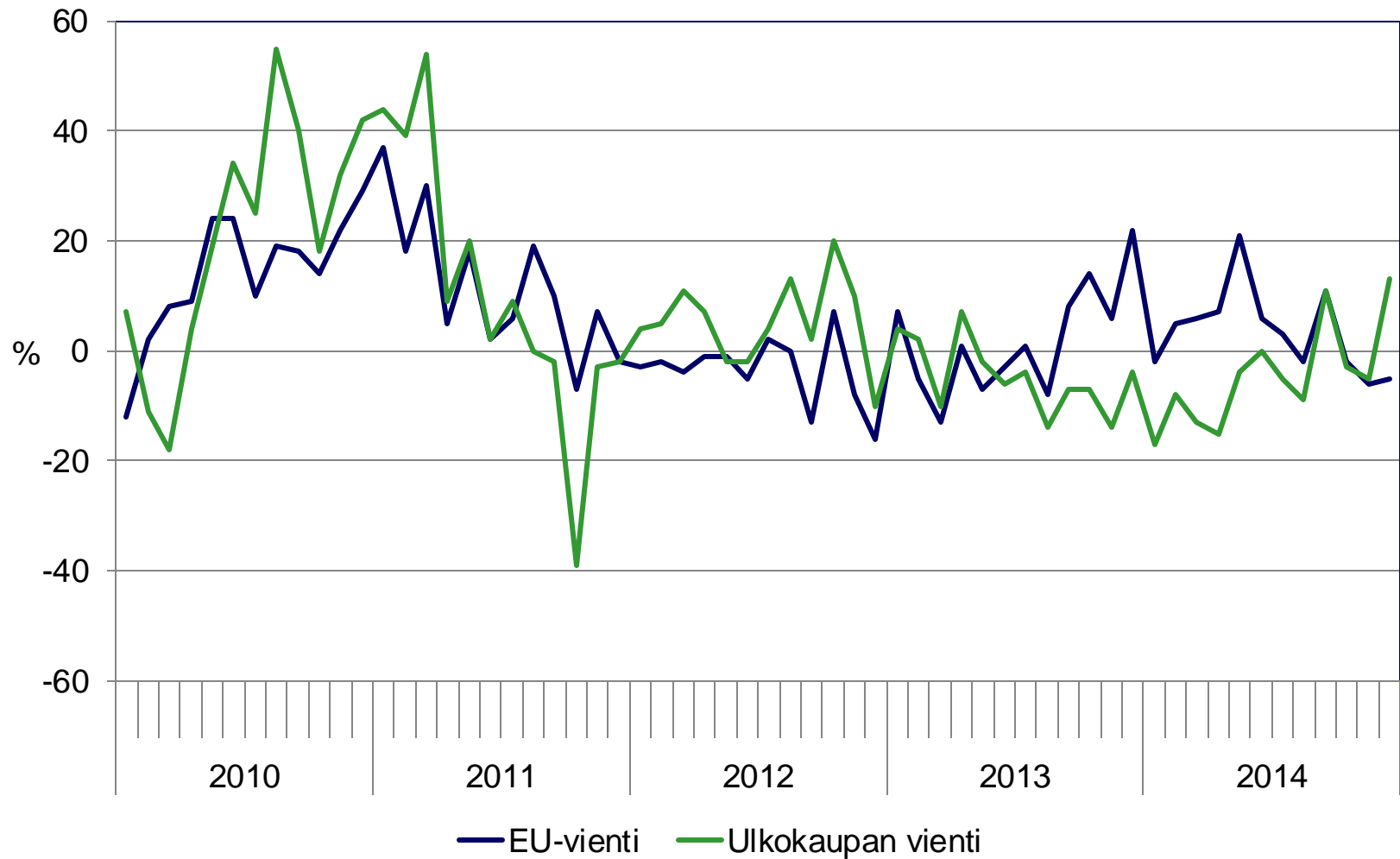






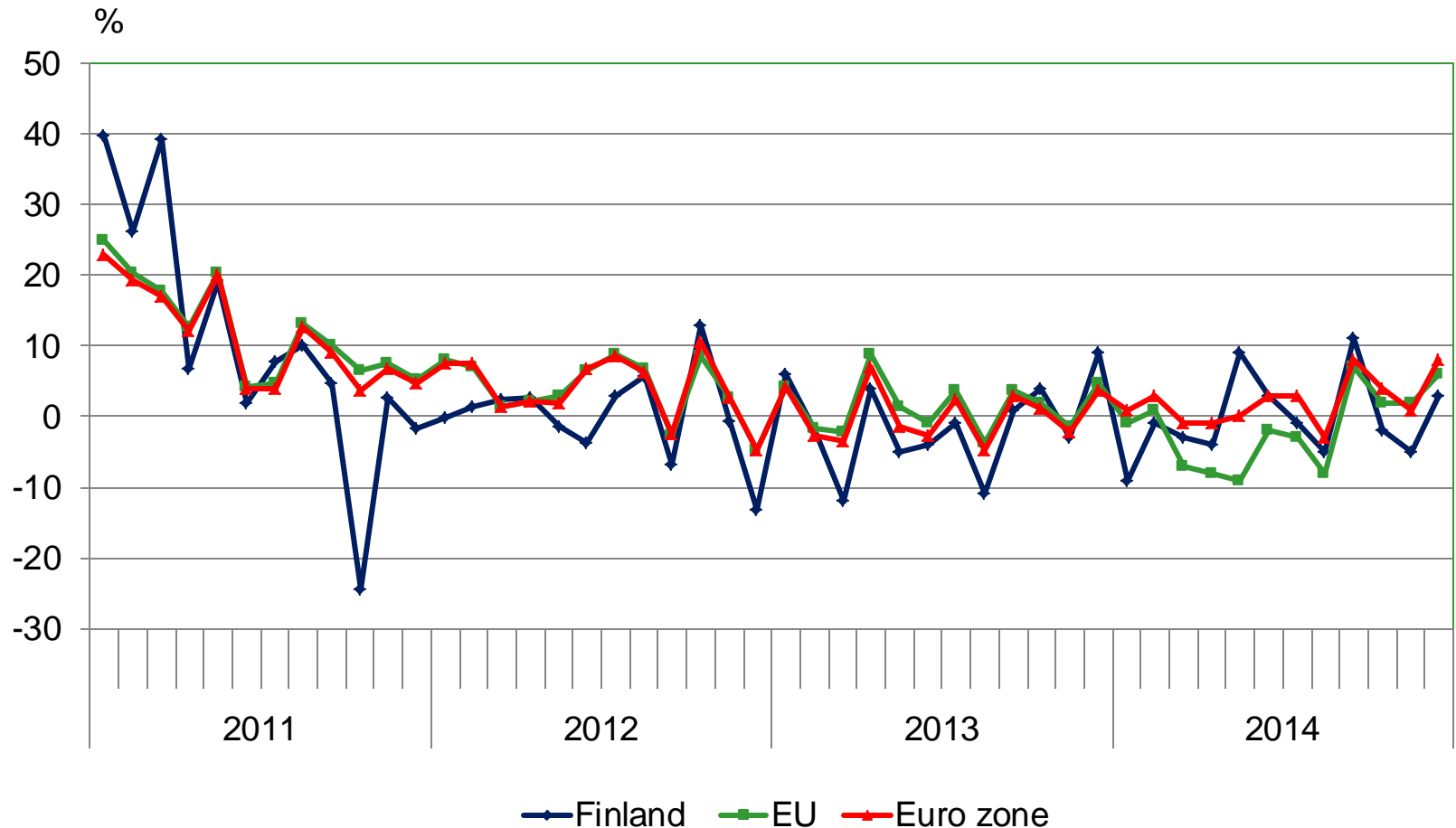




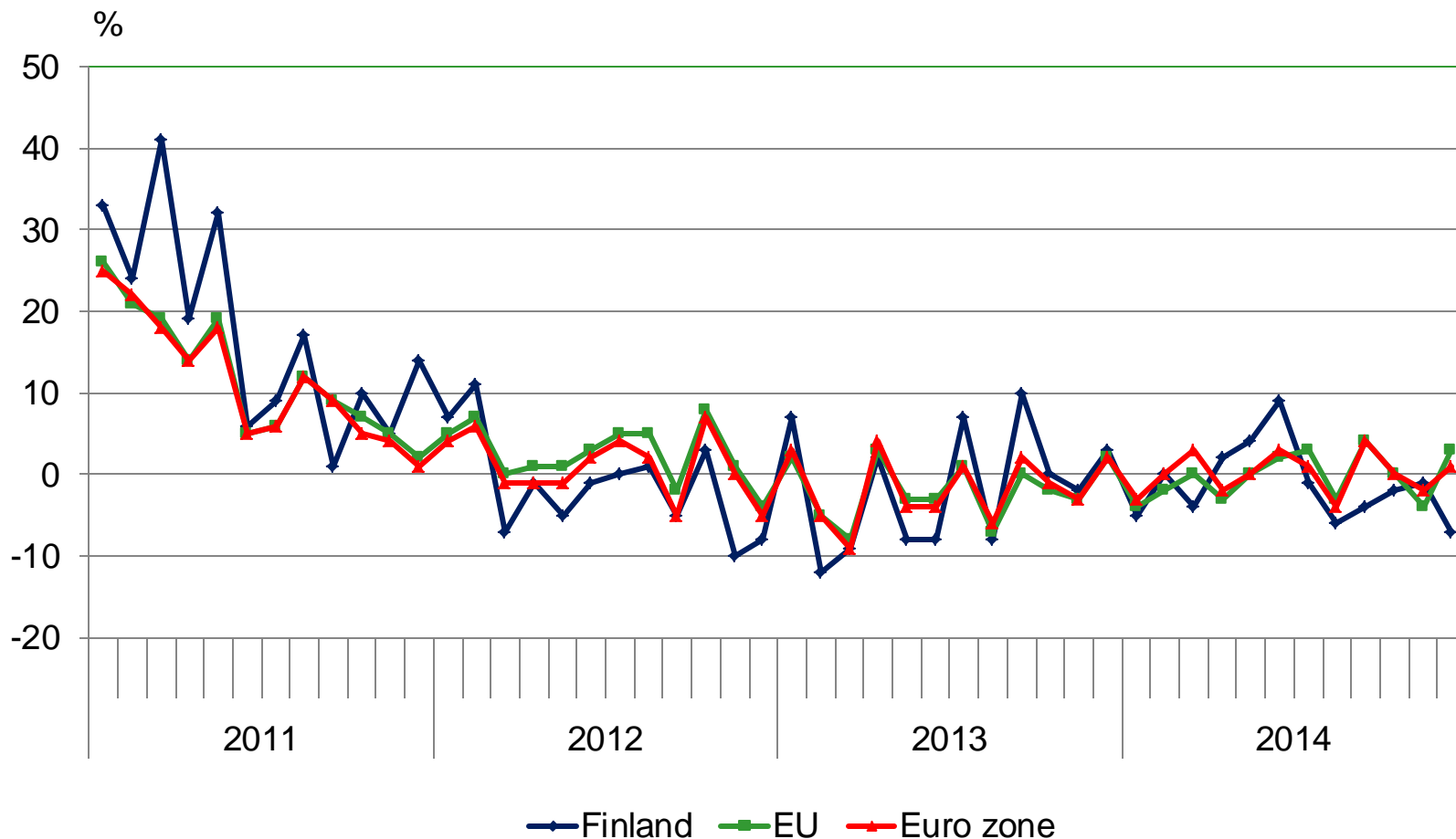




Change in value of exports in corresponding month of the previous year in Finland, euro zone and in all EU-countries 2011-2014



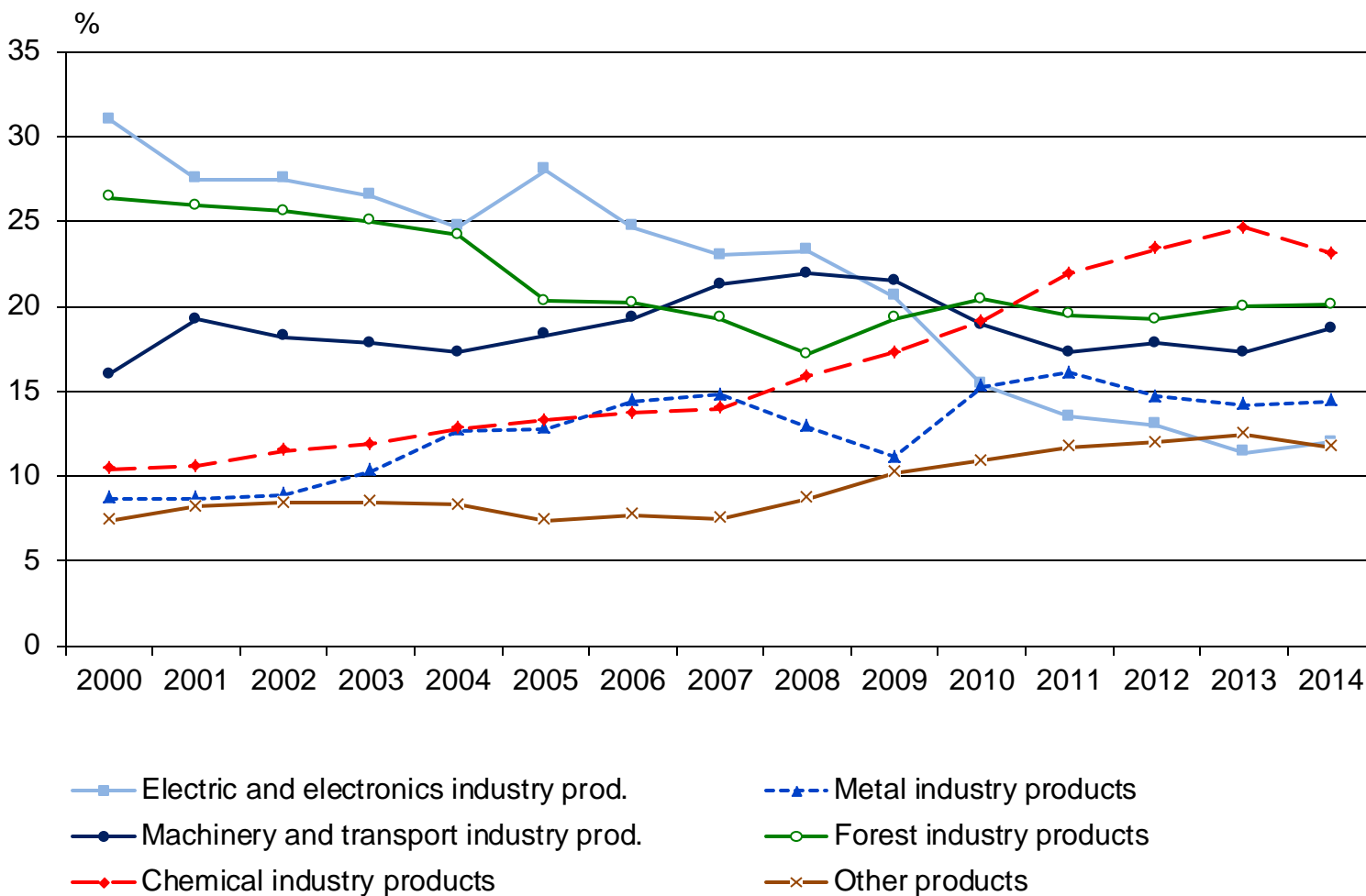
EU and euro zone exports: Source Eurostat Newsrelease

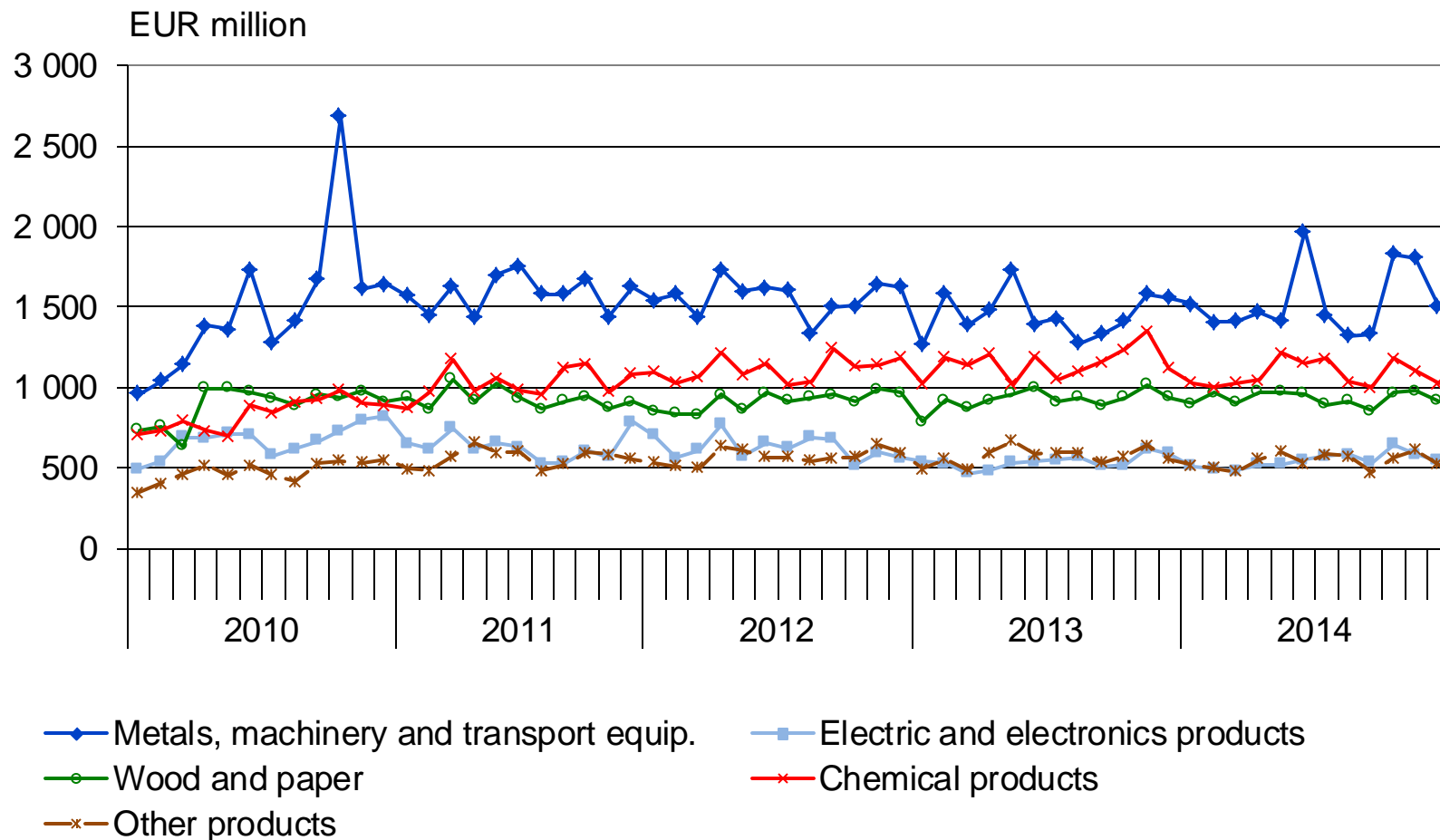


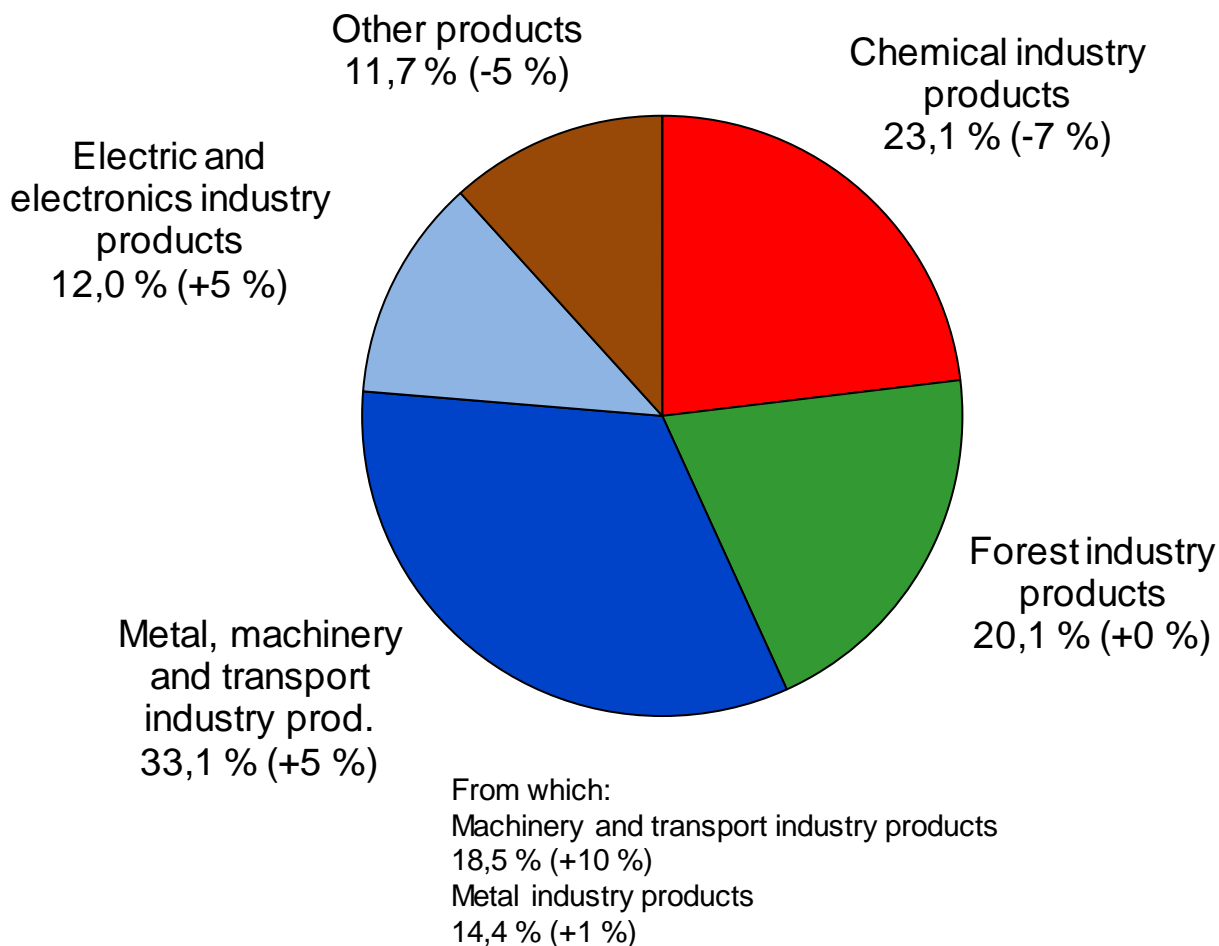
EU and euro zone imports: Source Eurostat Newsrelease



THE PRODUCTS BY ACTIVITY (CPA) SHARE OF THE TOTAL EXPORT IN 2000-2014



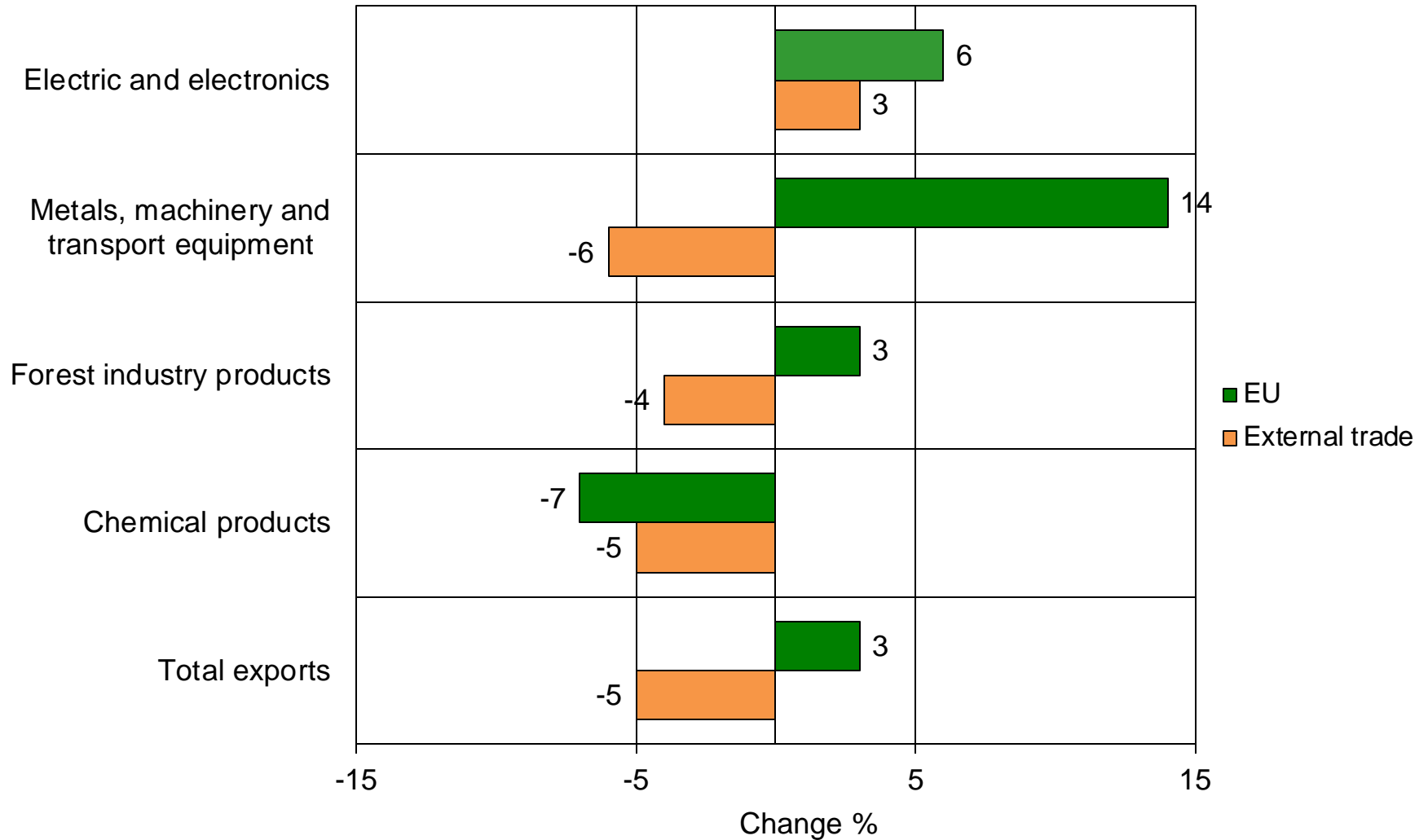


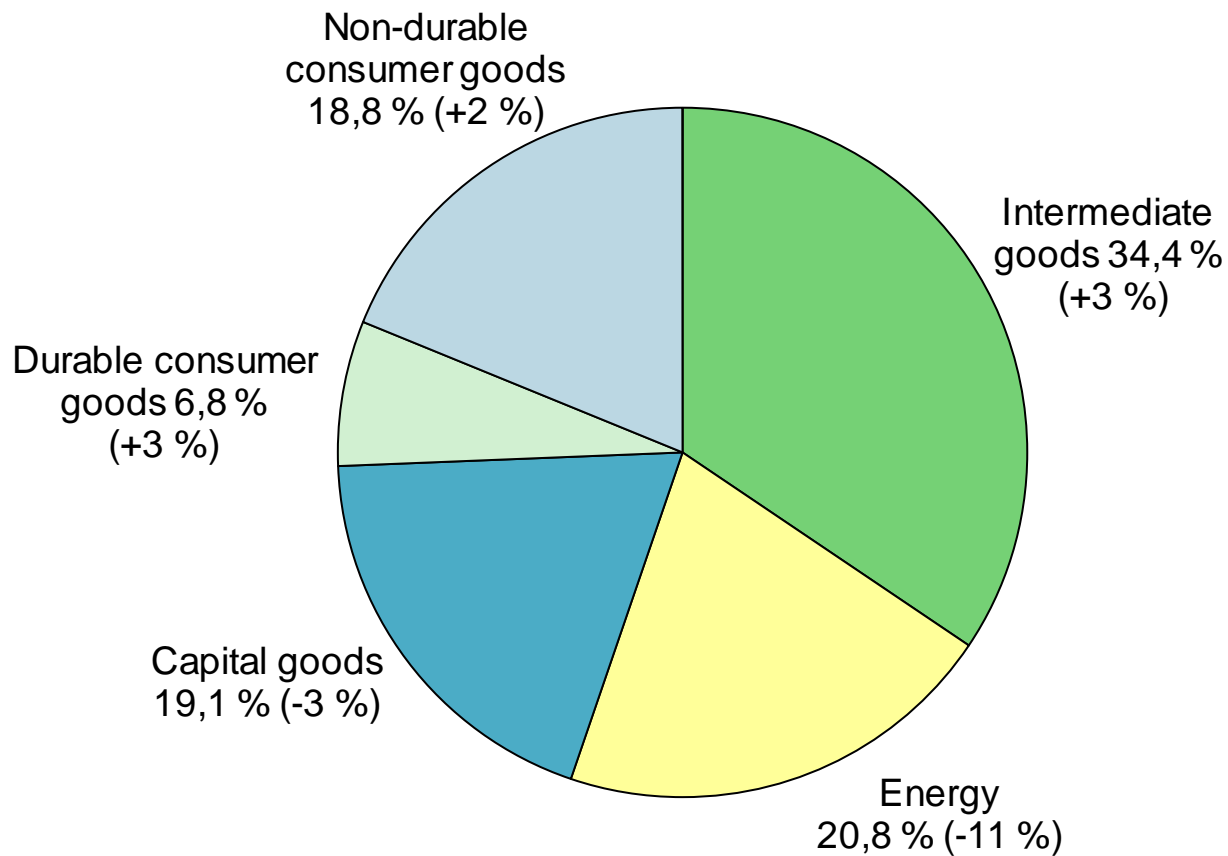


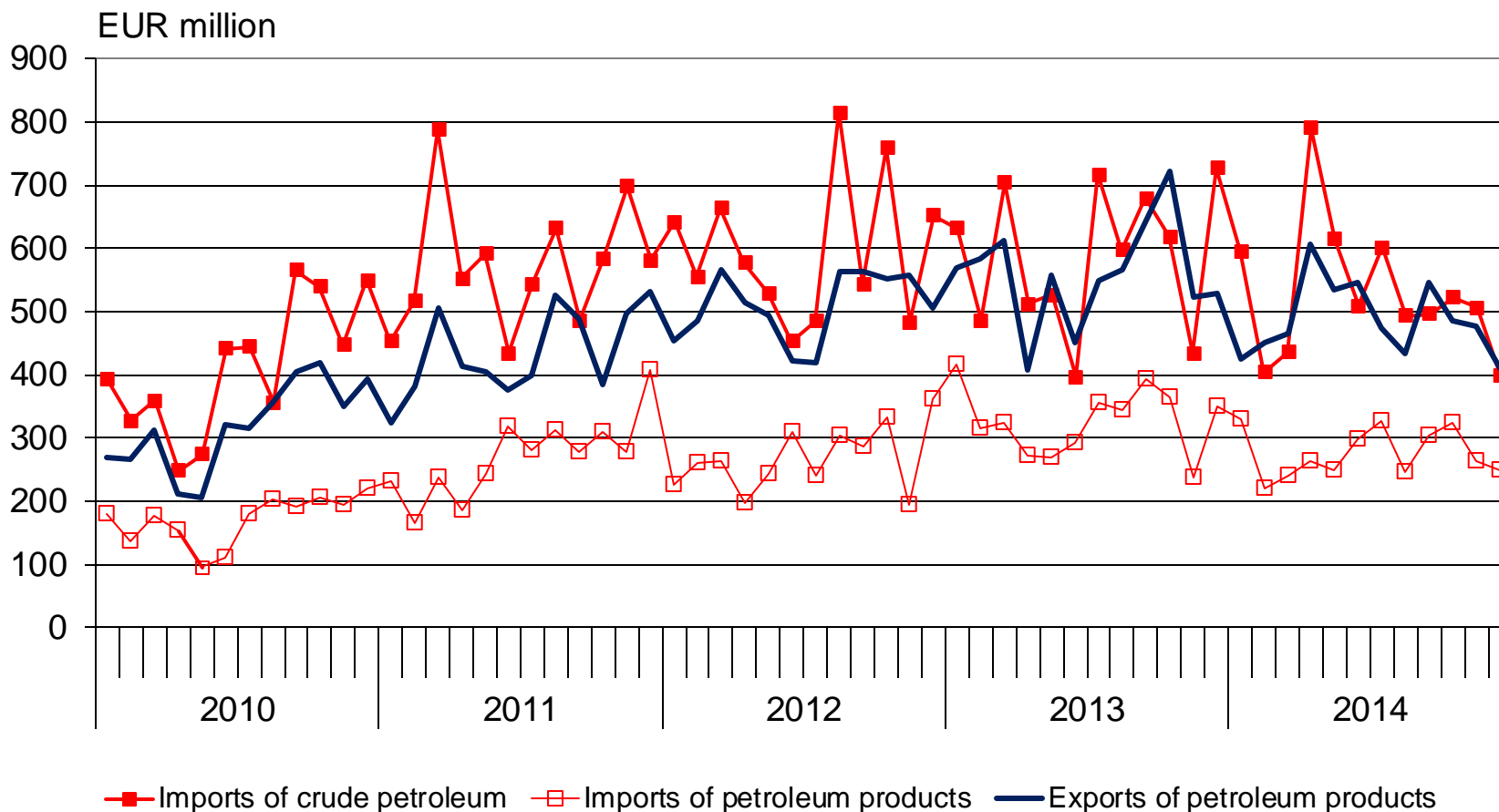


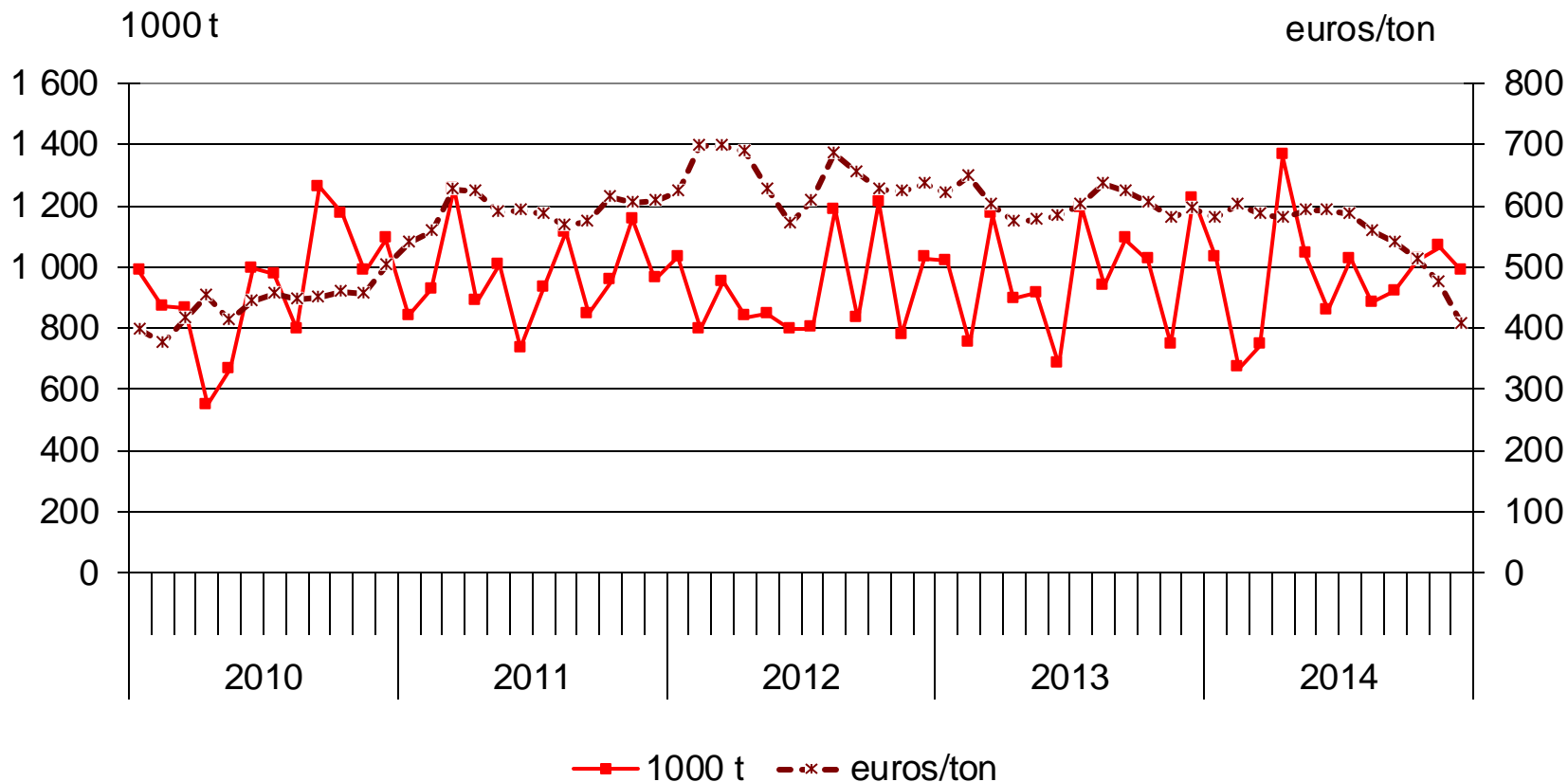
EXPORTS IN 2014 TO EU AND TO COUNTRIES OUTSIDE EU BY PRODUCTS BY ACTIVITY (CPA)

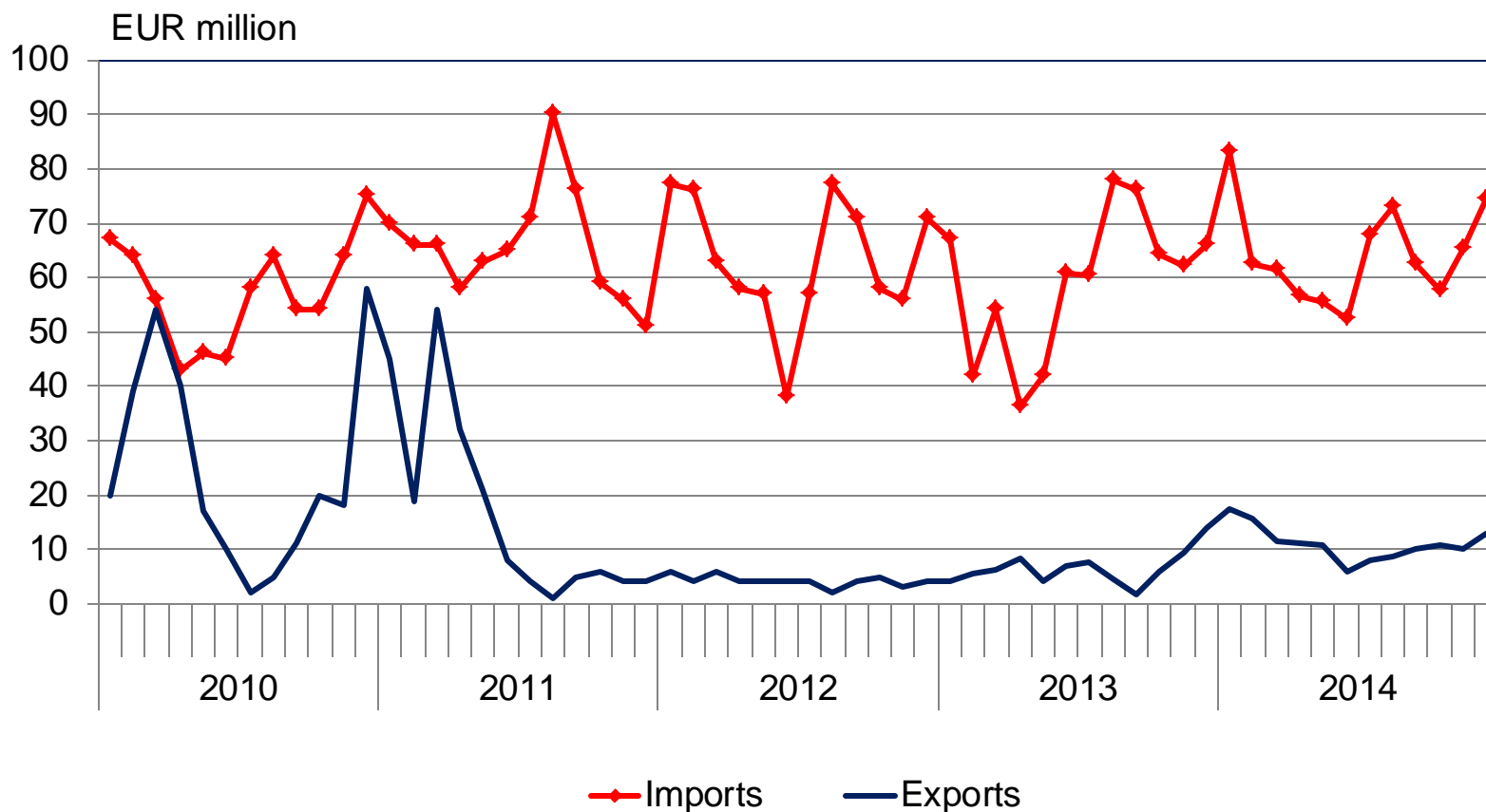
Change from previous year (%)

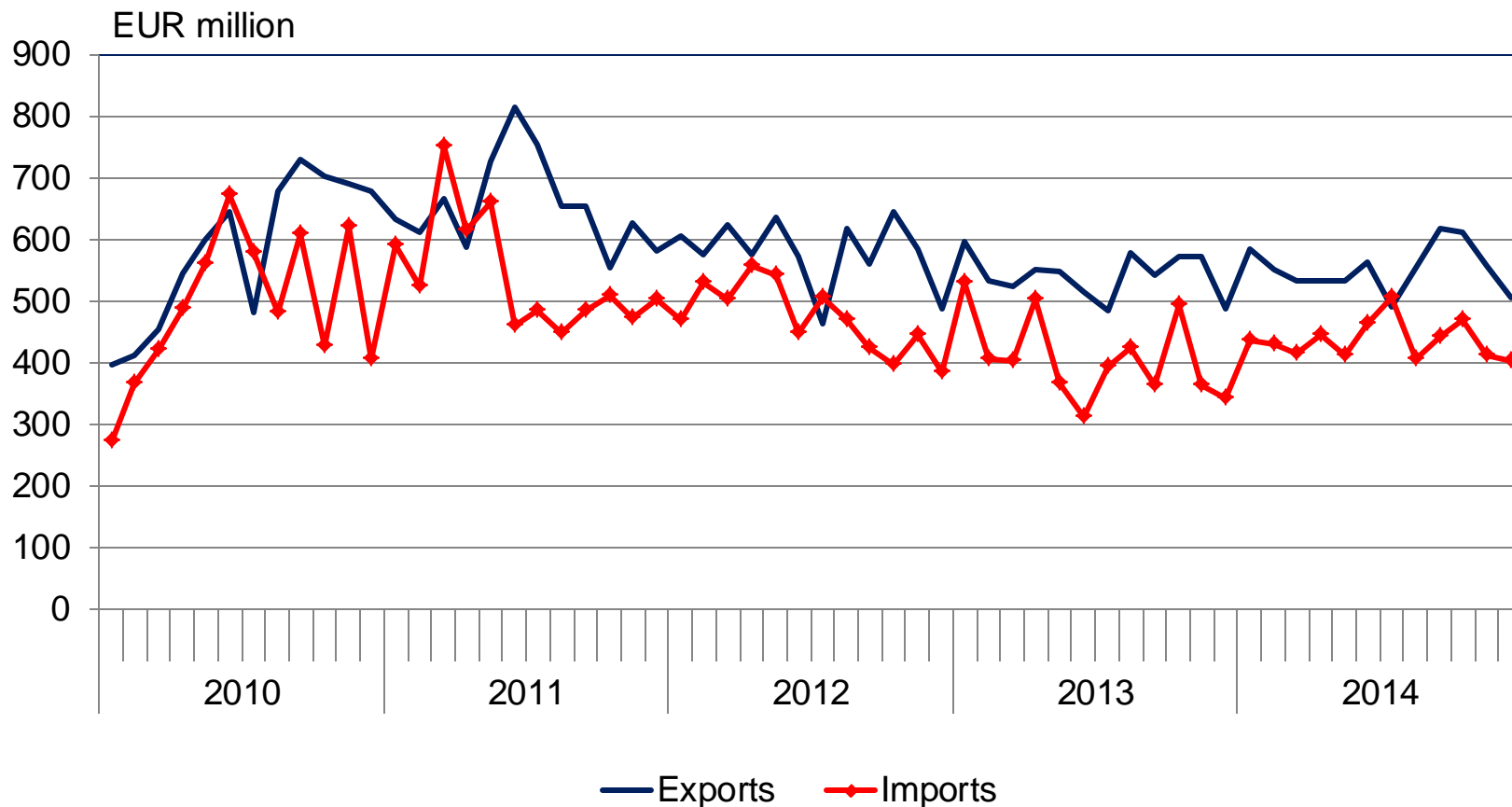


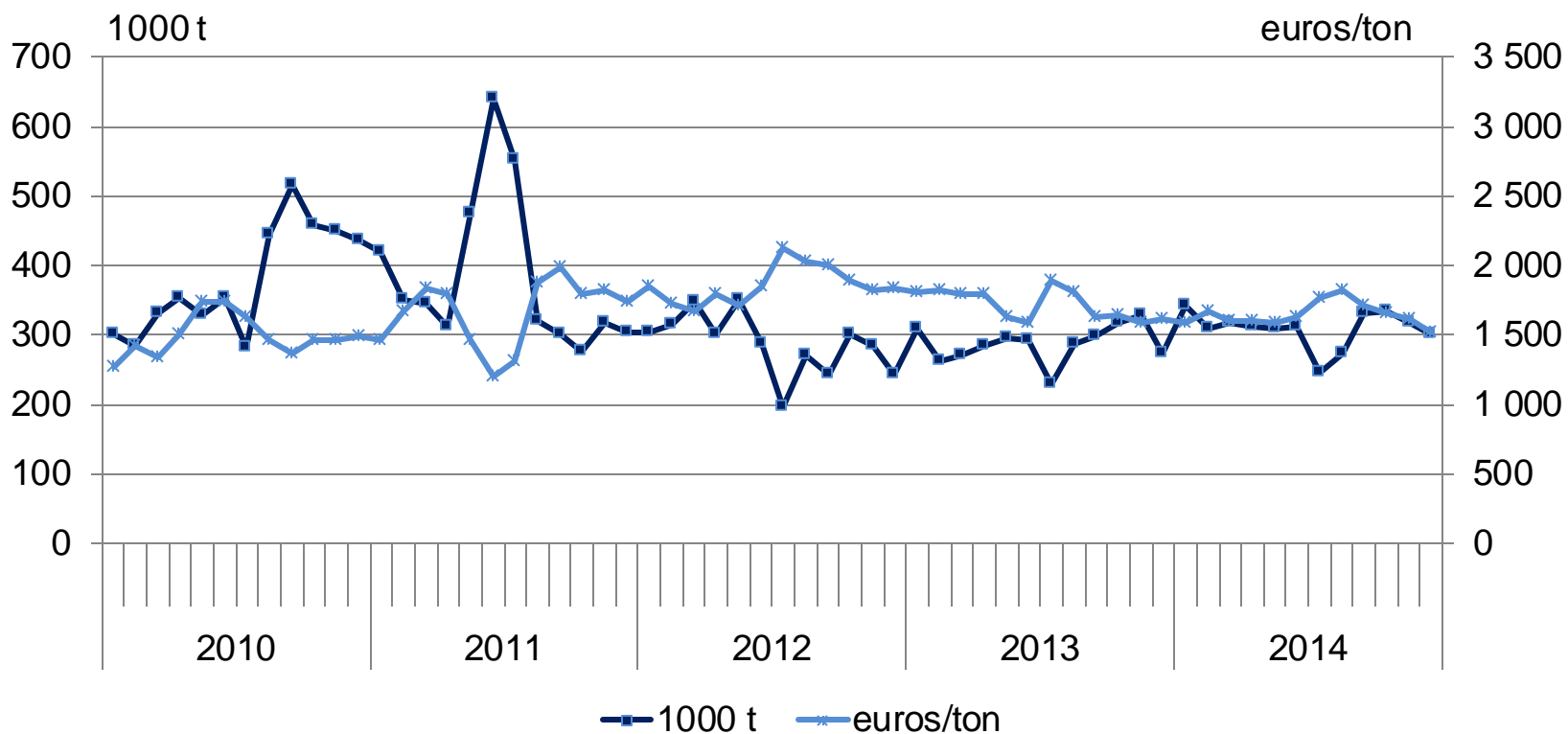


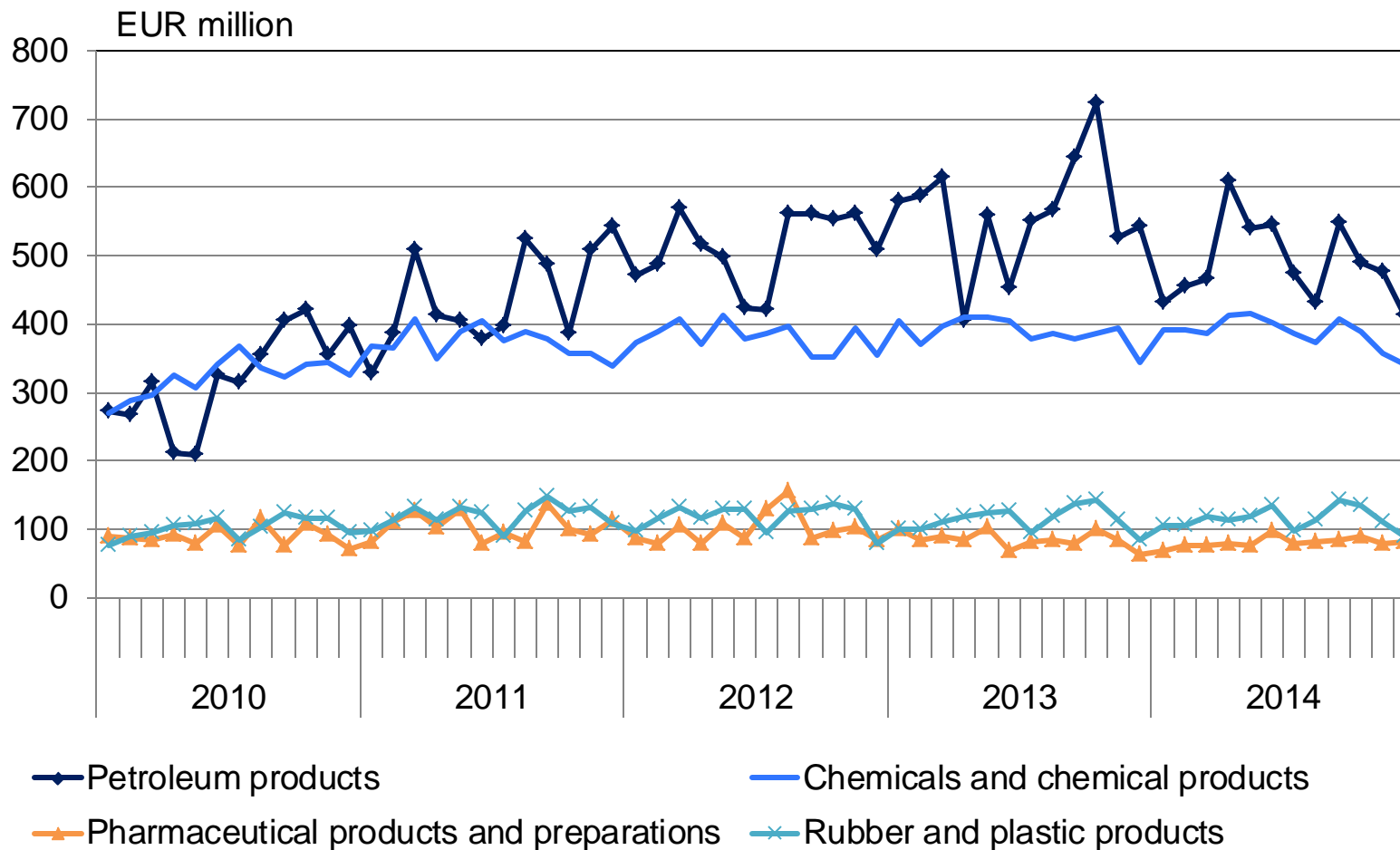


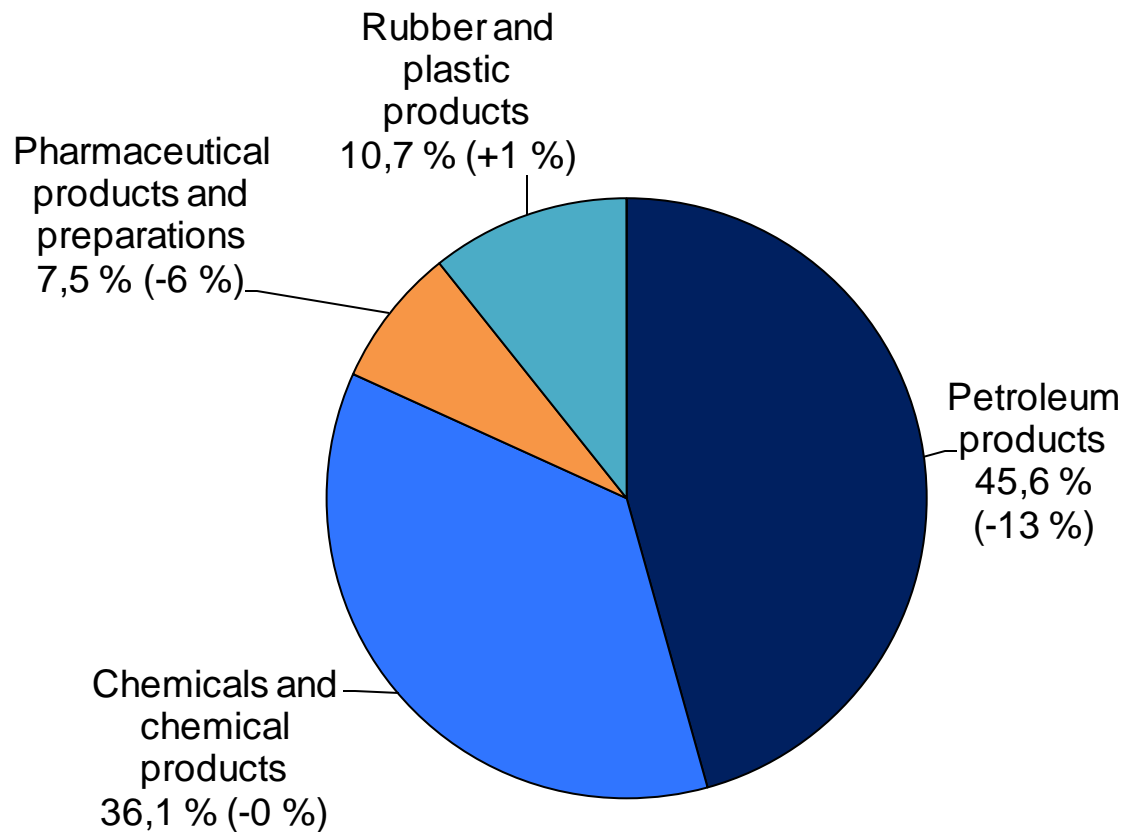


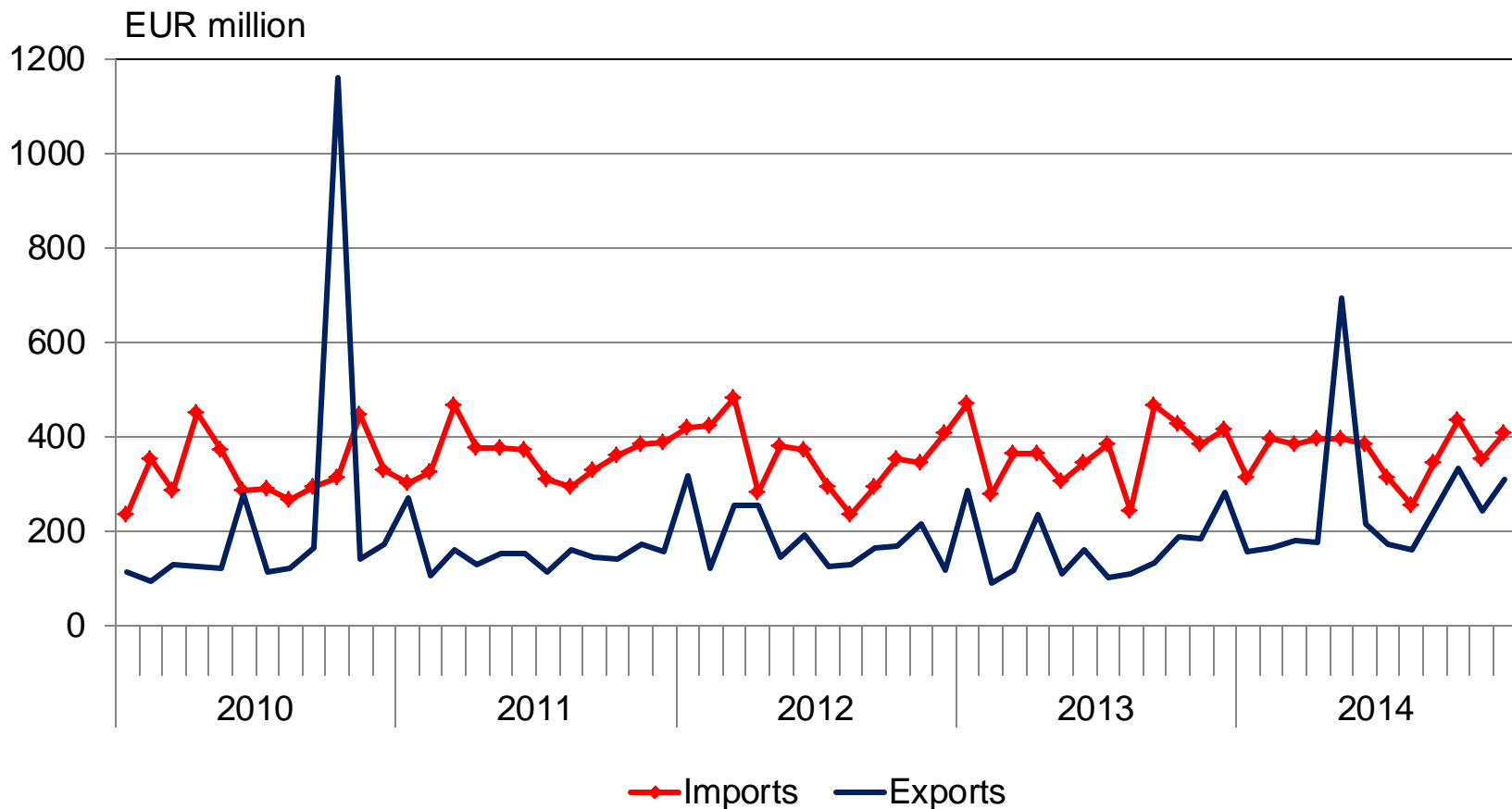


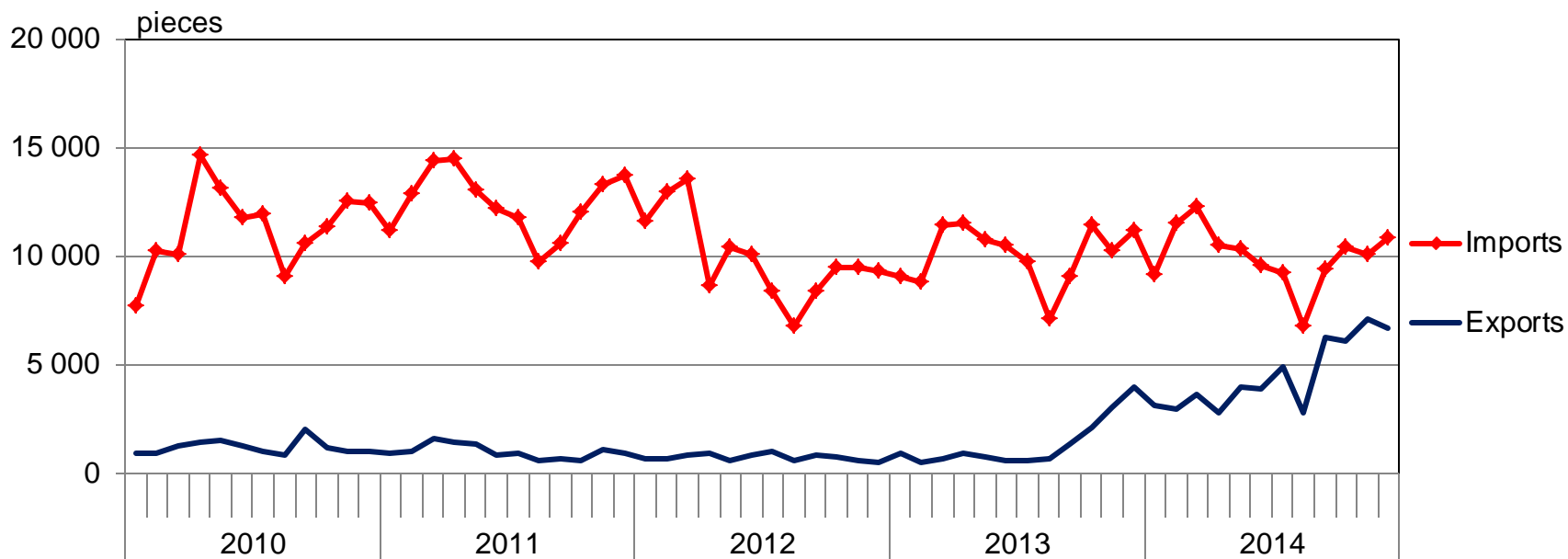






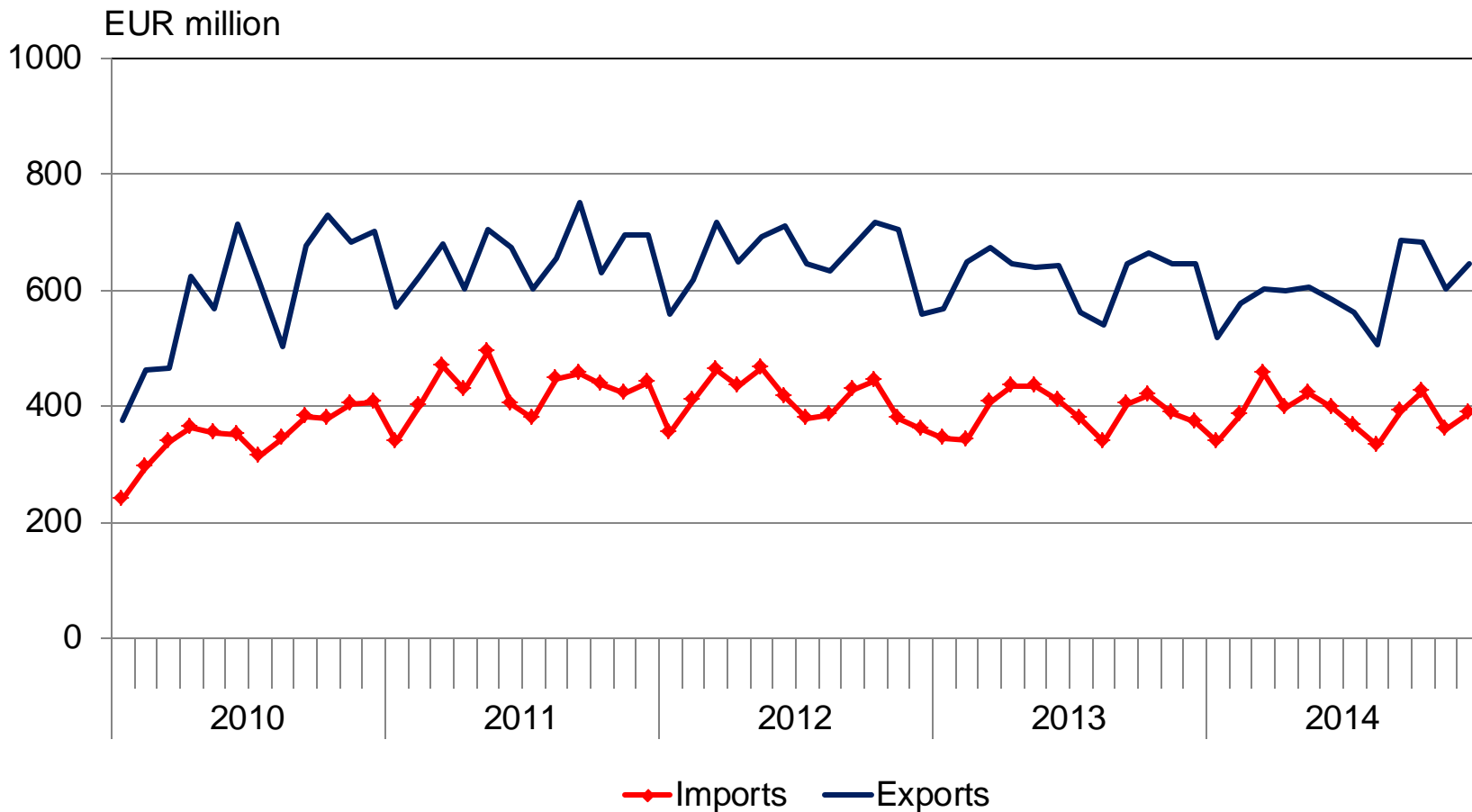


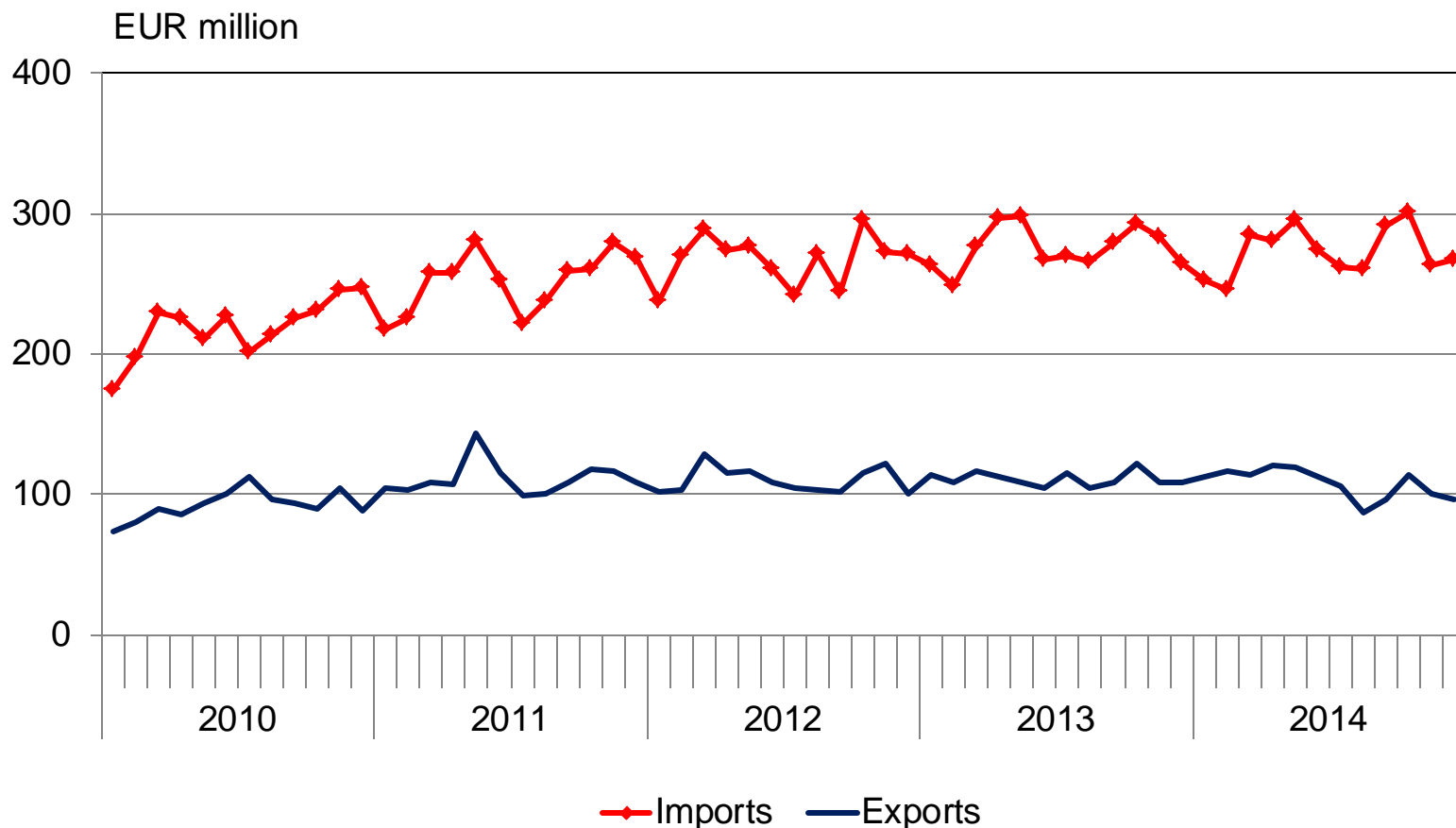




Imports and exports of cars (pieces)

	<u>imports</u>	<u>exports</u>
2009	108 411	35 422
2010	135 537	14 764
2011	149 316	12 133
2012	118 978	9 157
2013	120 790	16 311
2014	120 045	54 162



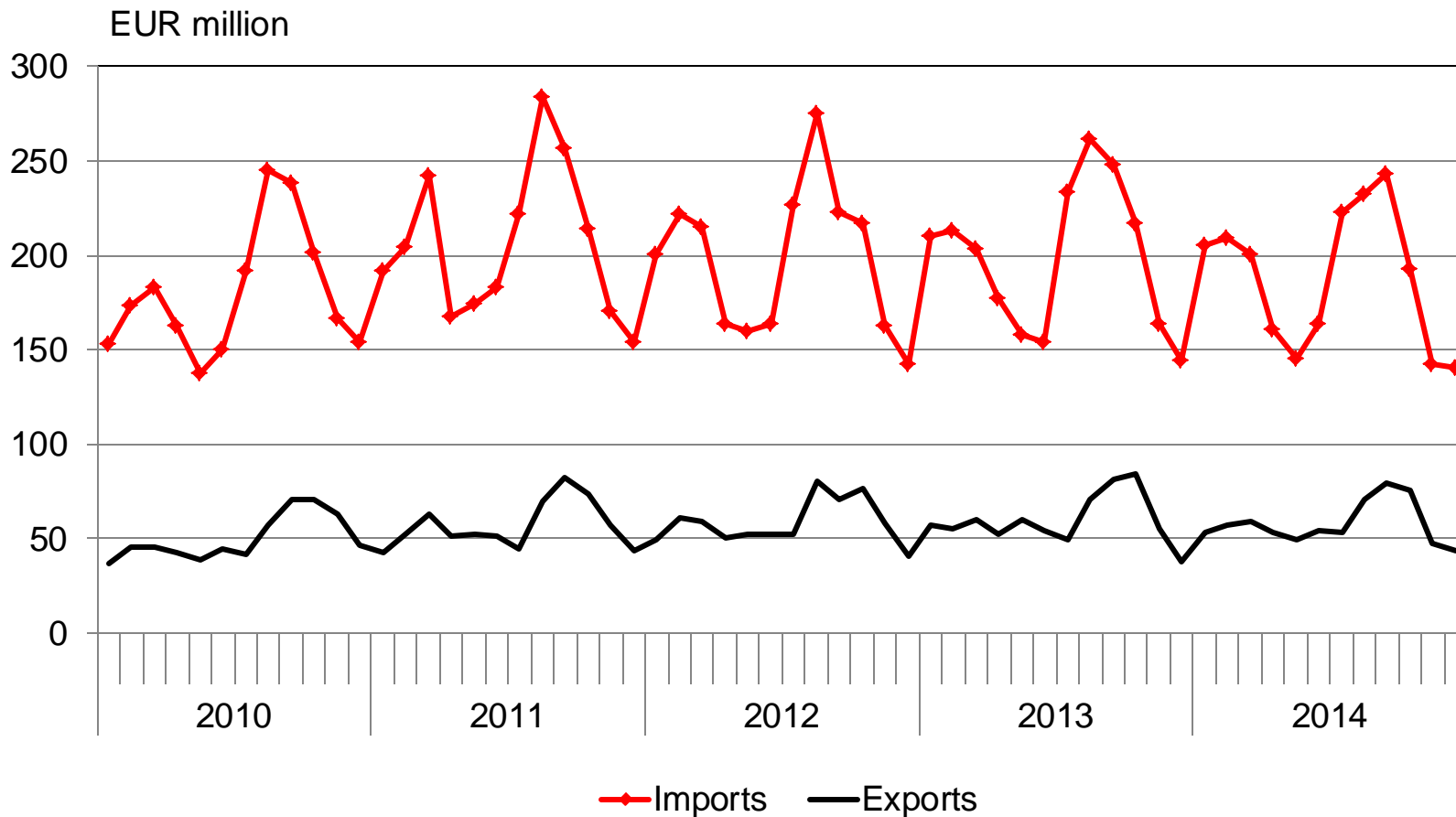




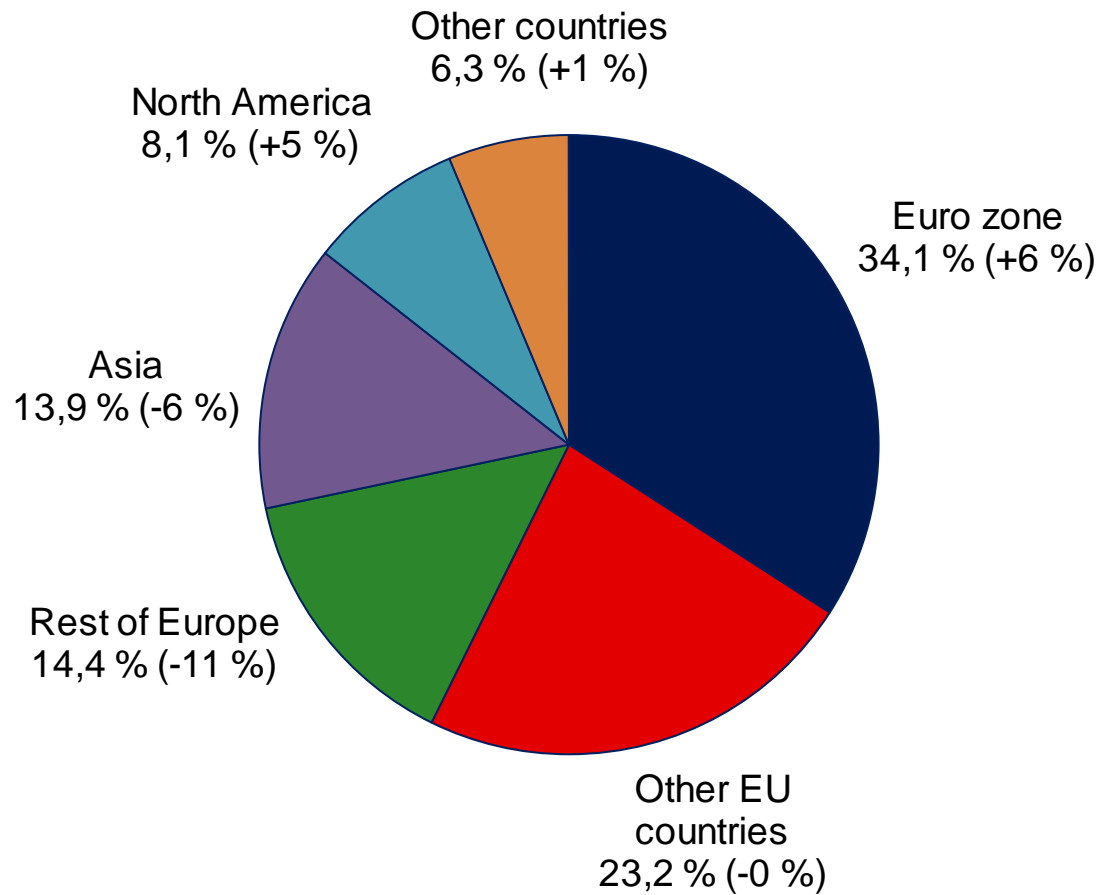
TULLI

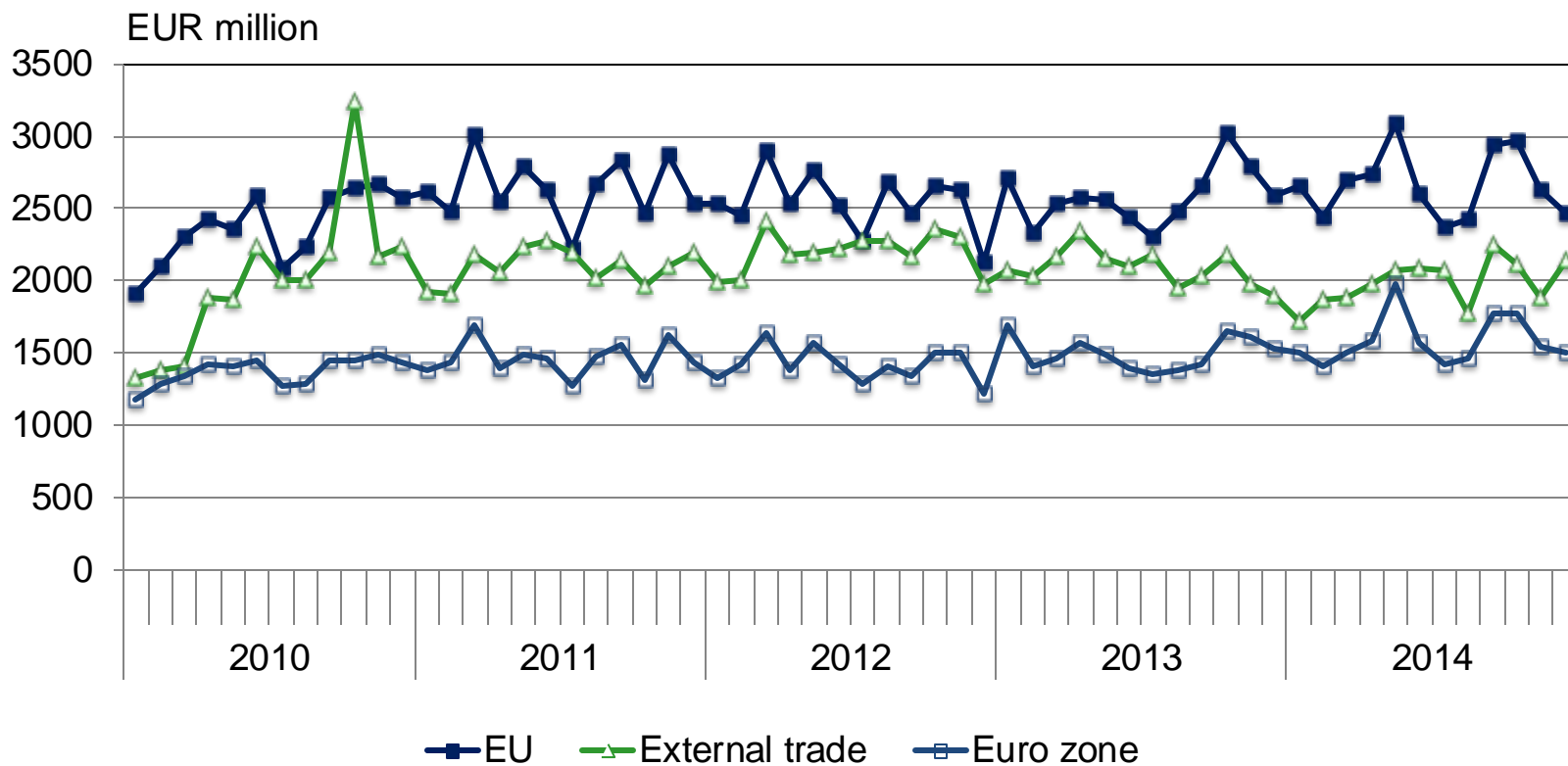
TULL · CUSTOMS

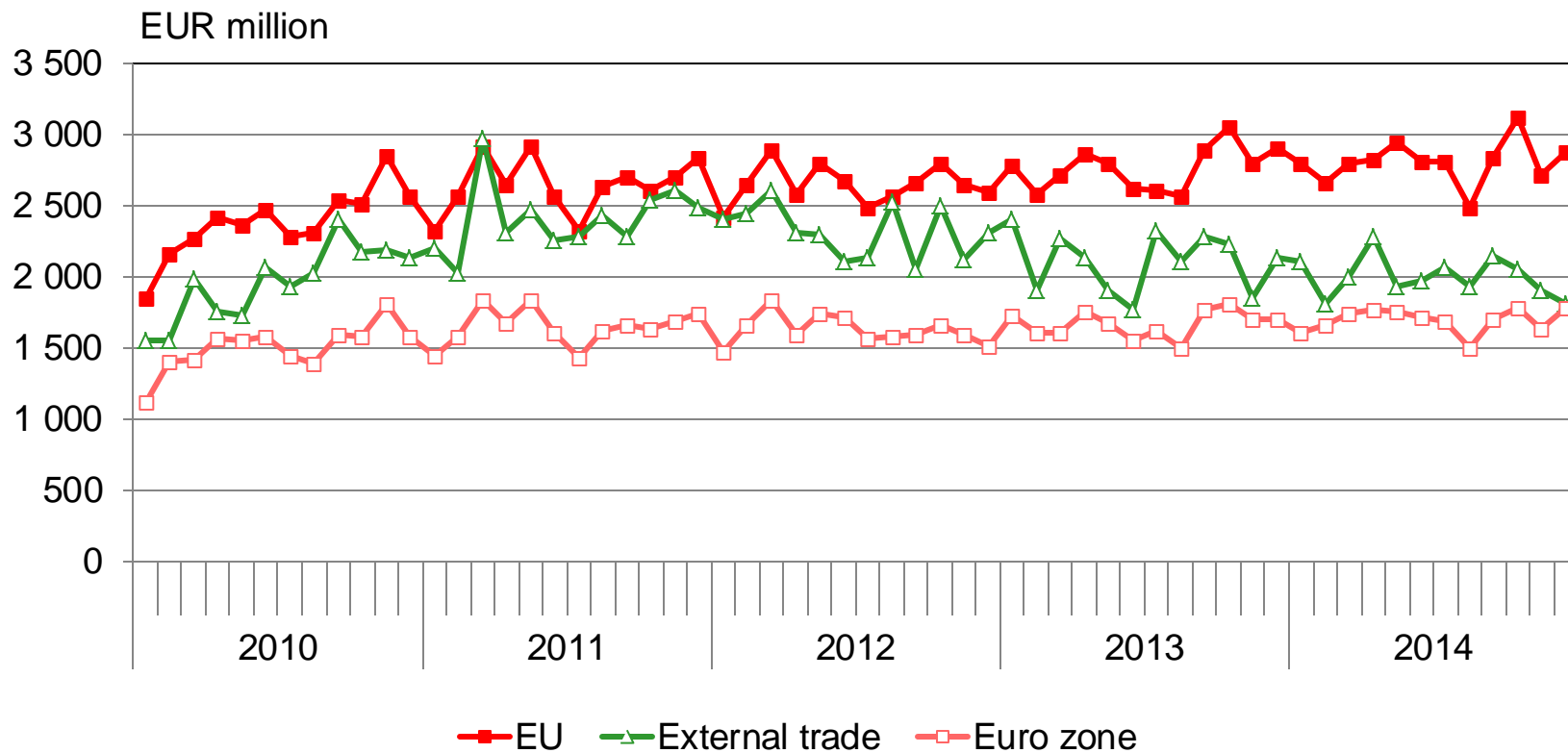
MONTHLY IMPORTS AND EXPORTS OF TEXTILE, CLOTHES AND FOOTWEAR 2010-2014; EUR million; (SITC 65,84,85)

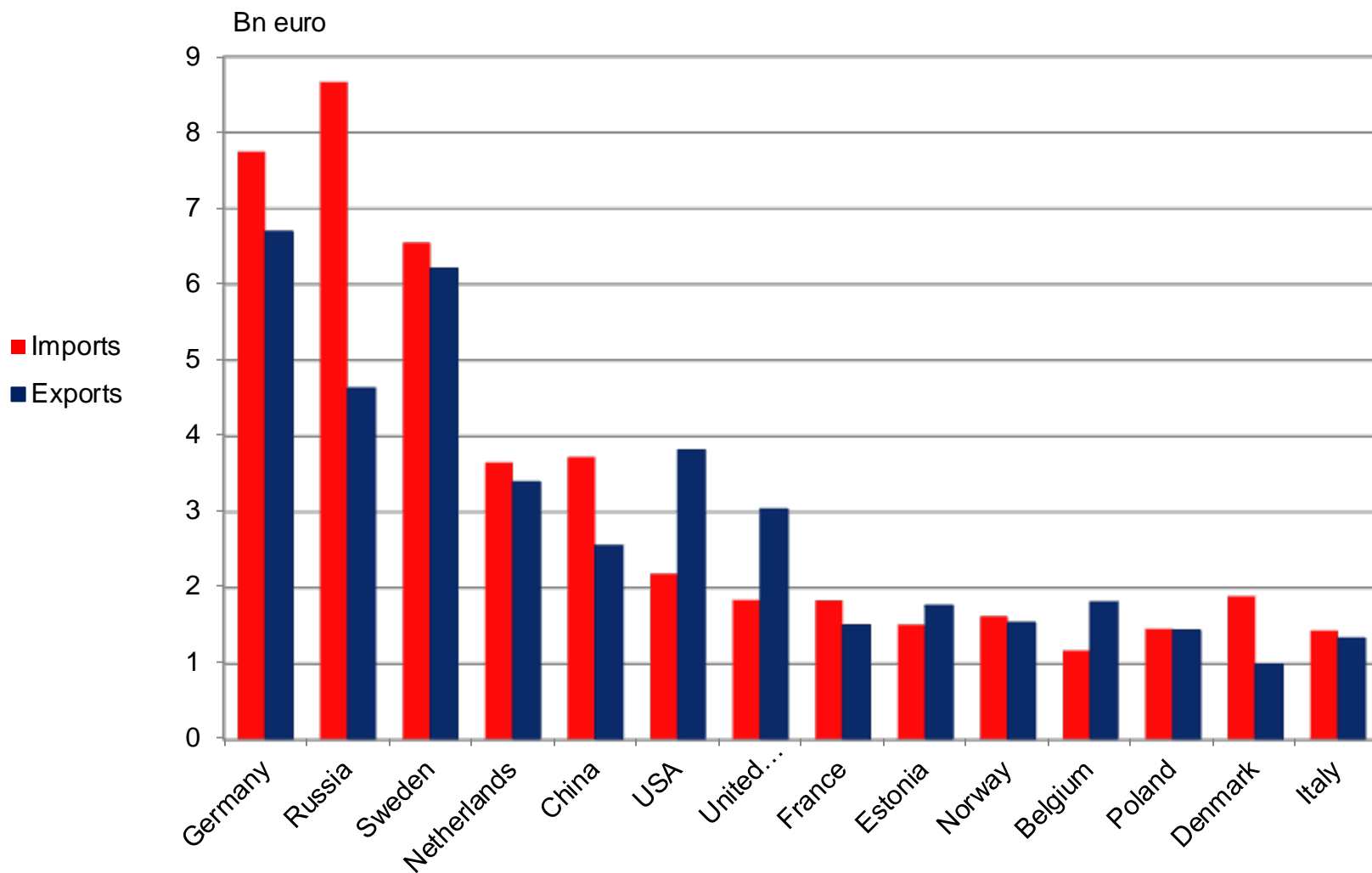








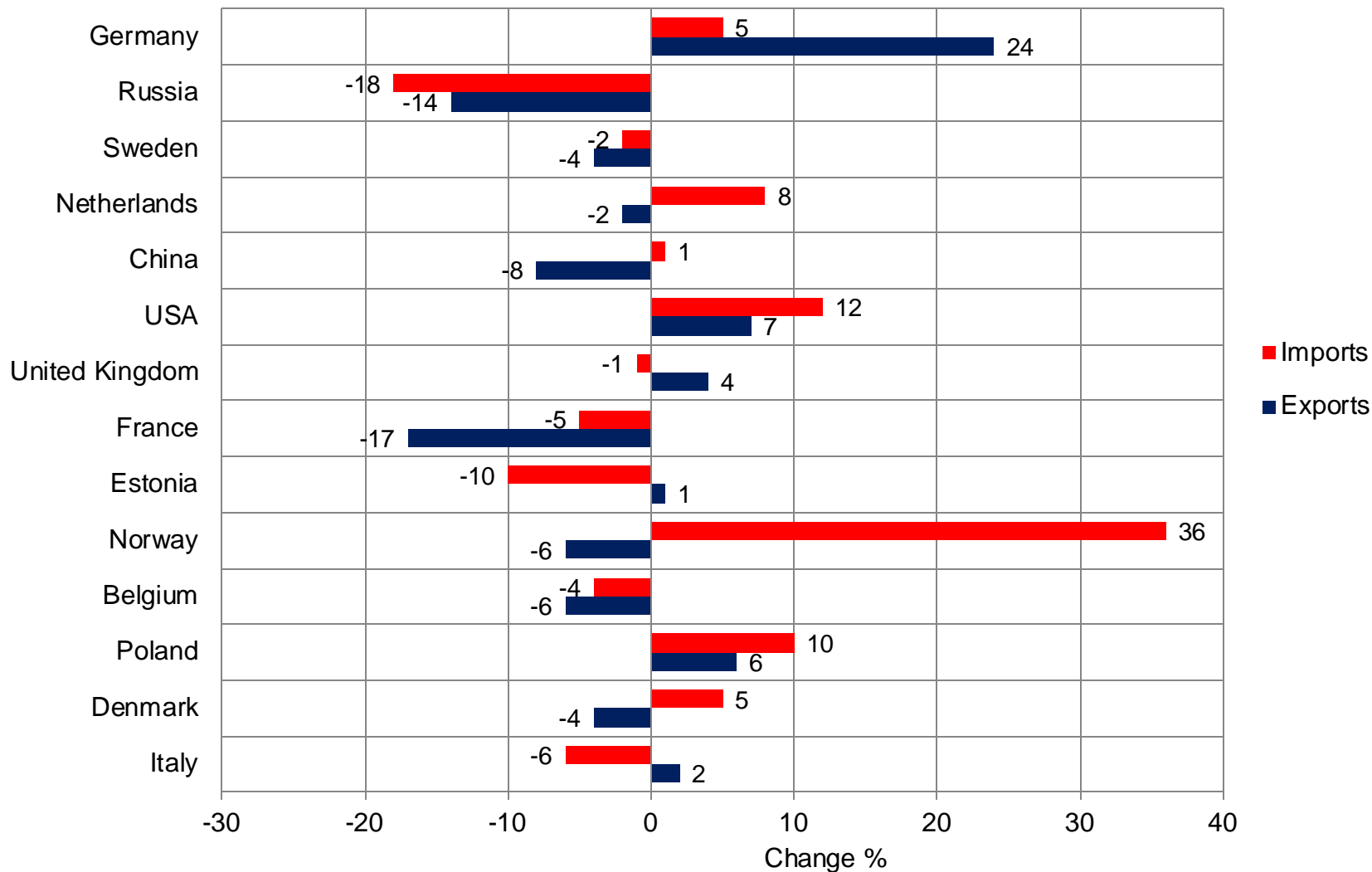


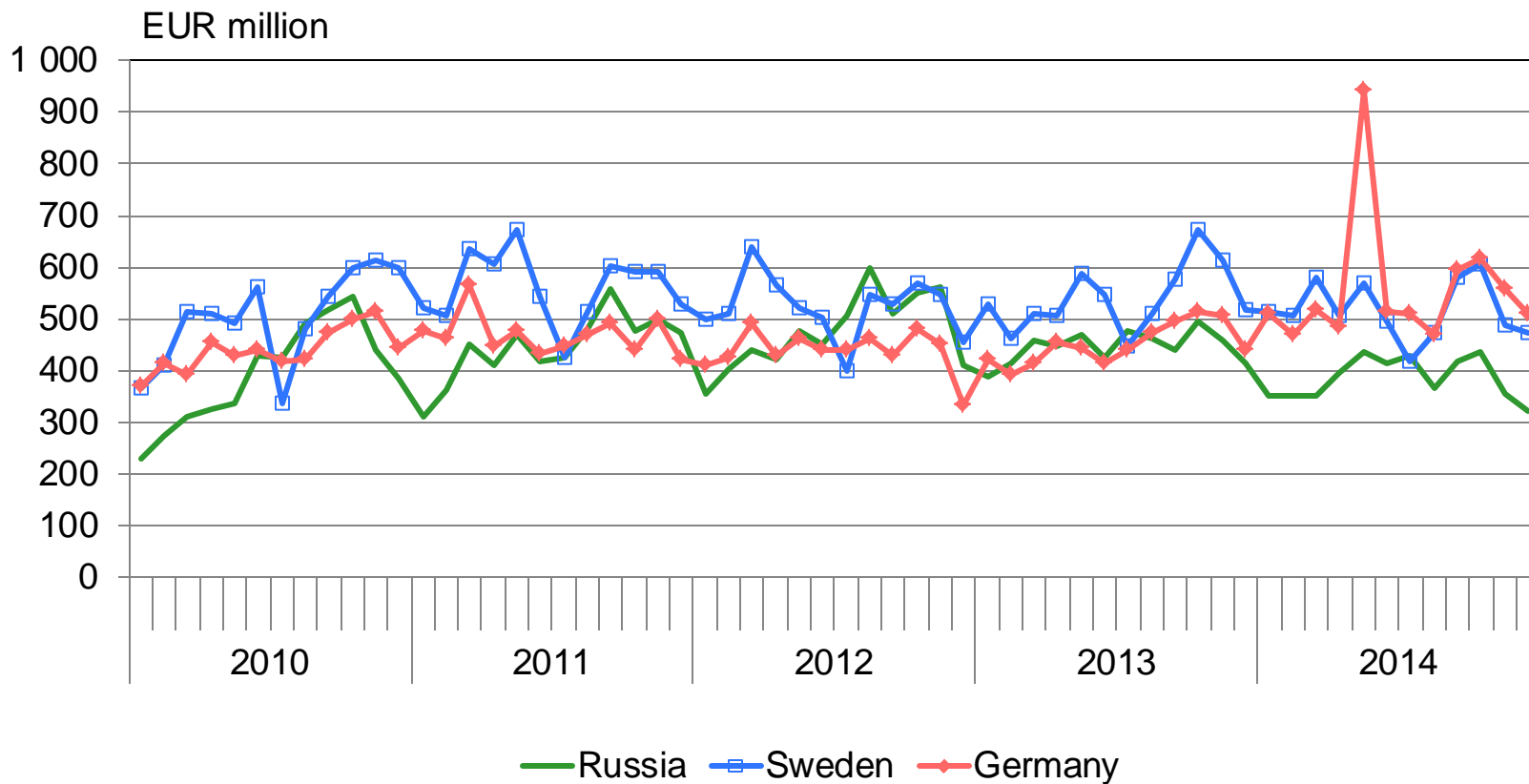


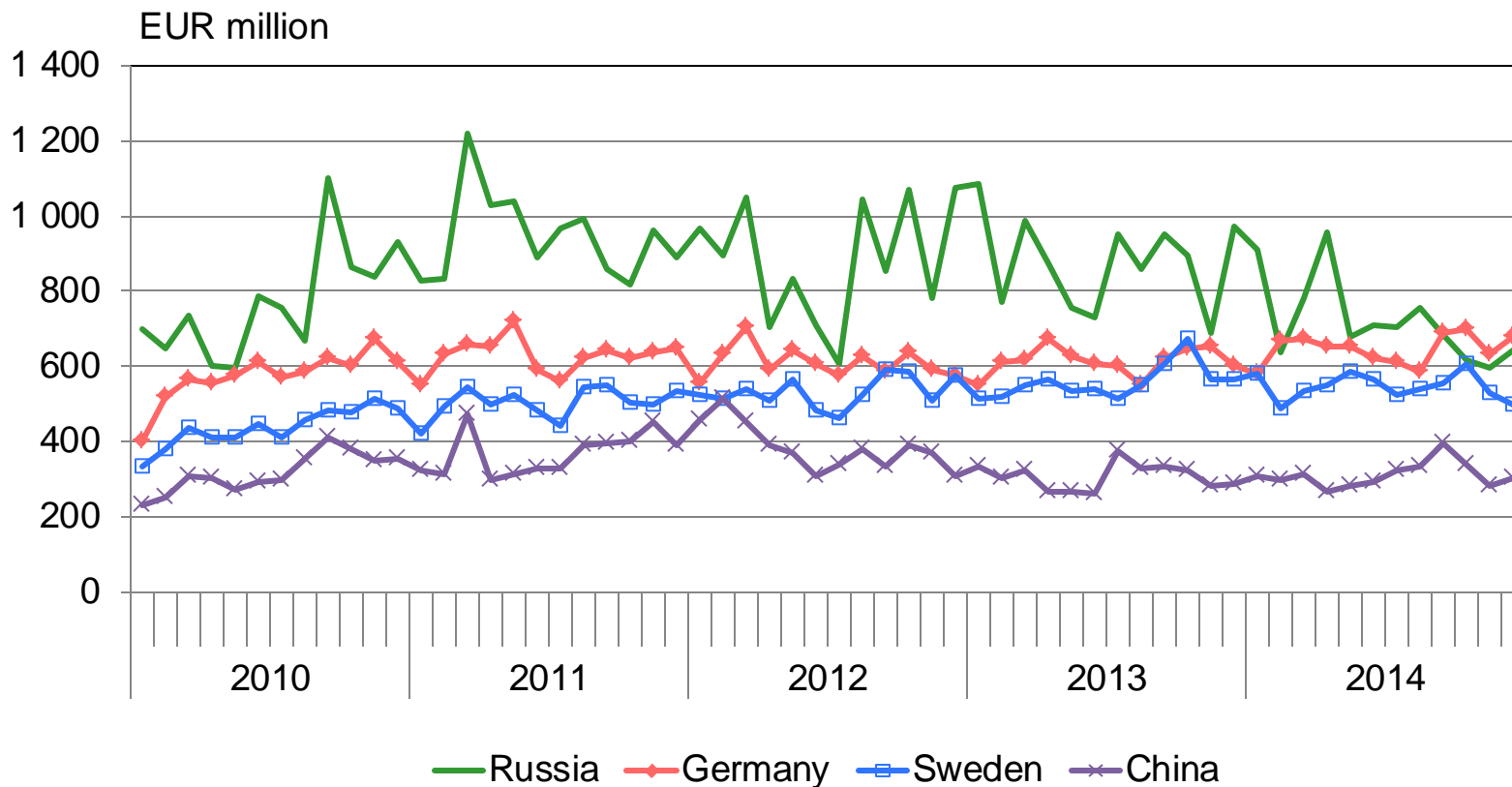


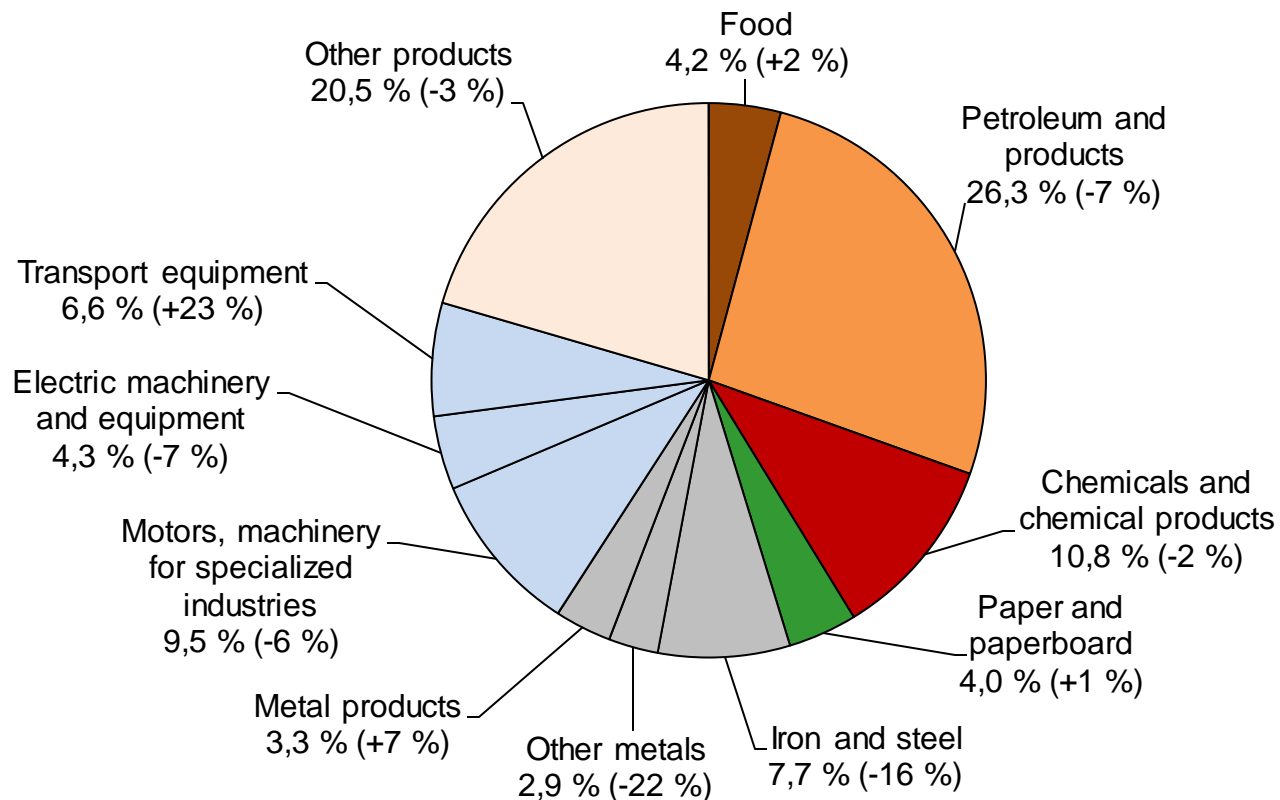
CHANGE OF EXPORTS AND IMPORTS WITH MAIN TRADING PARTNERS 2014

Change compared to corresponding time period previous year (%)

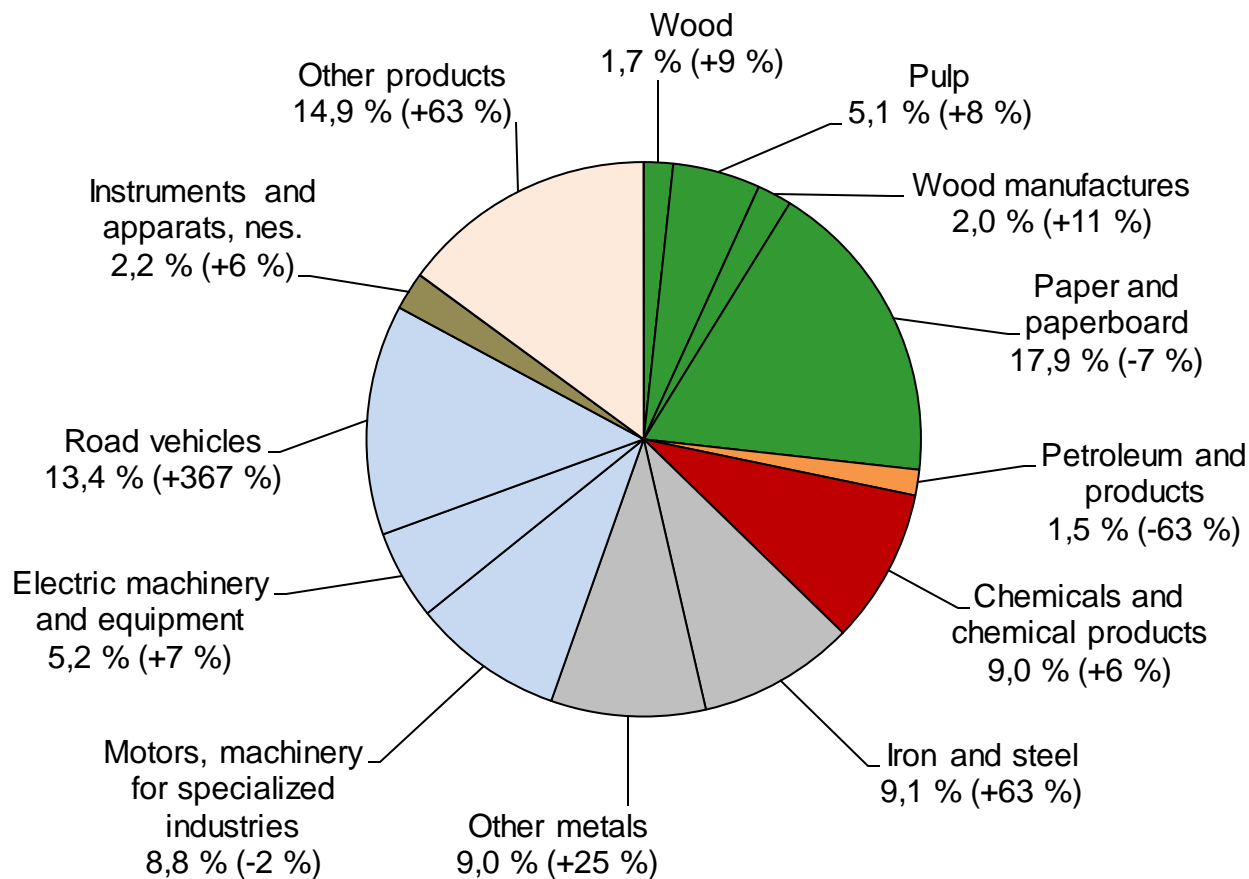




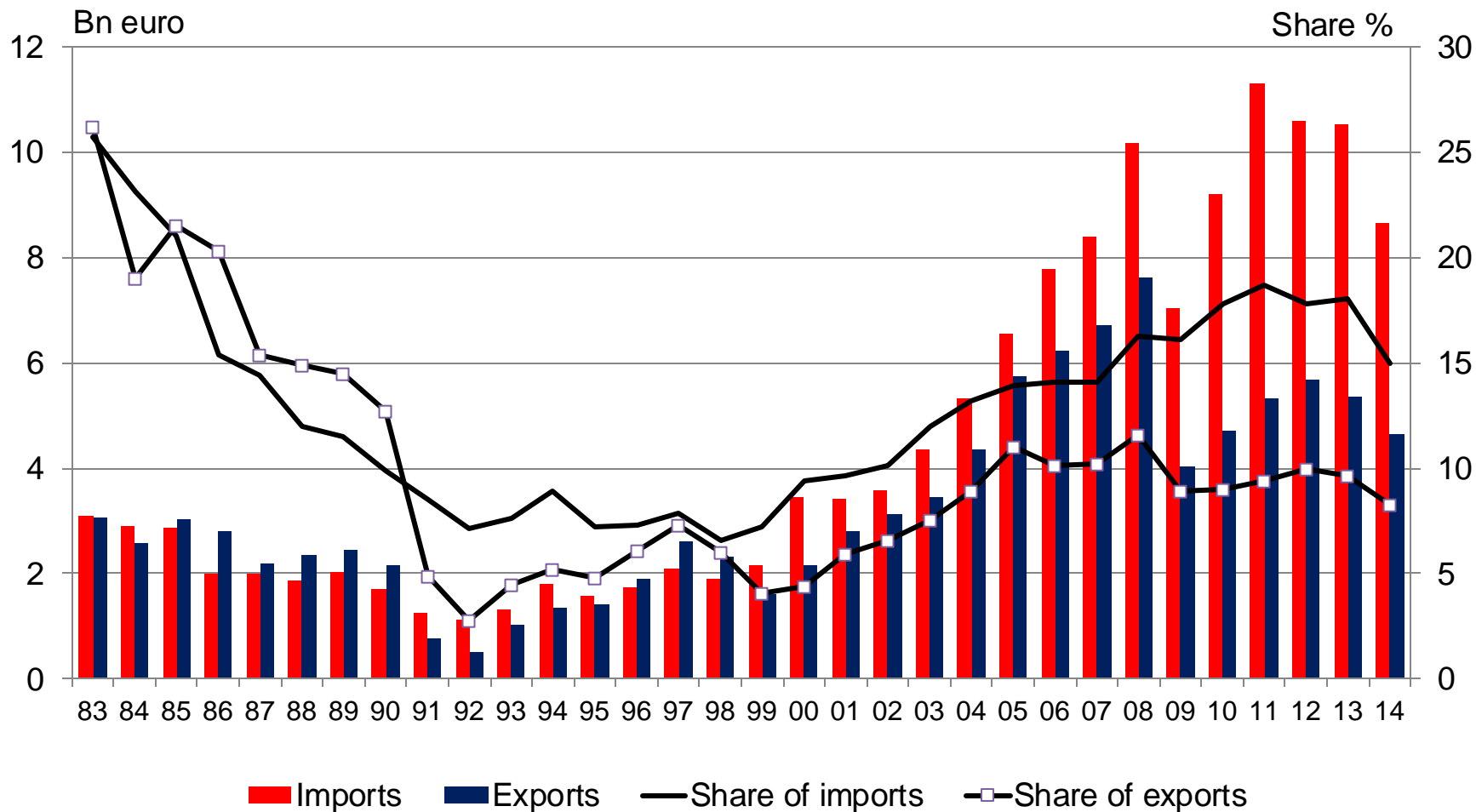


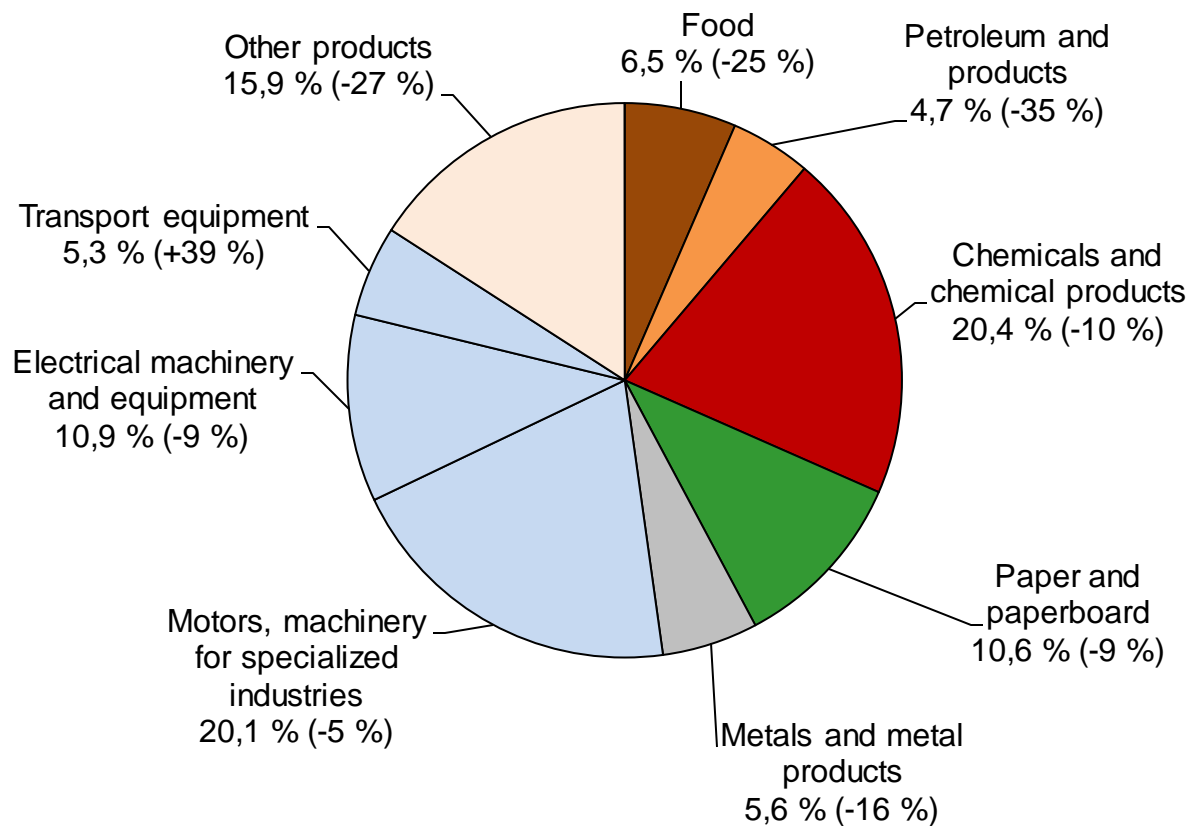


Total value of exports to Sweden in 2014 was EUR 6,2 billion (-4 %)

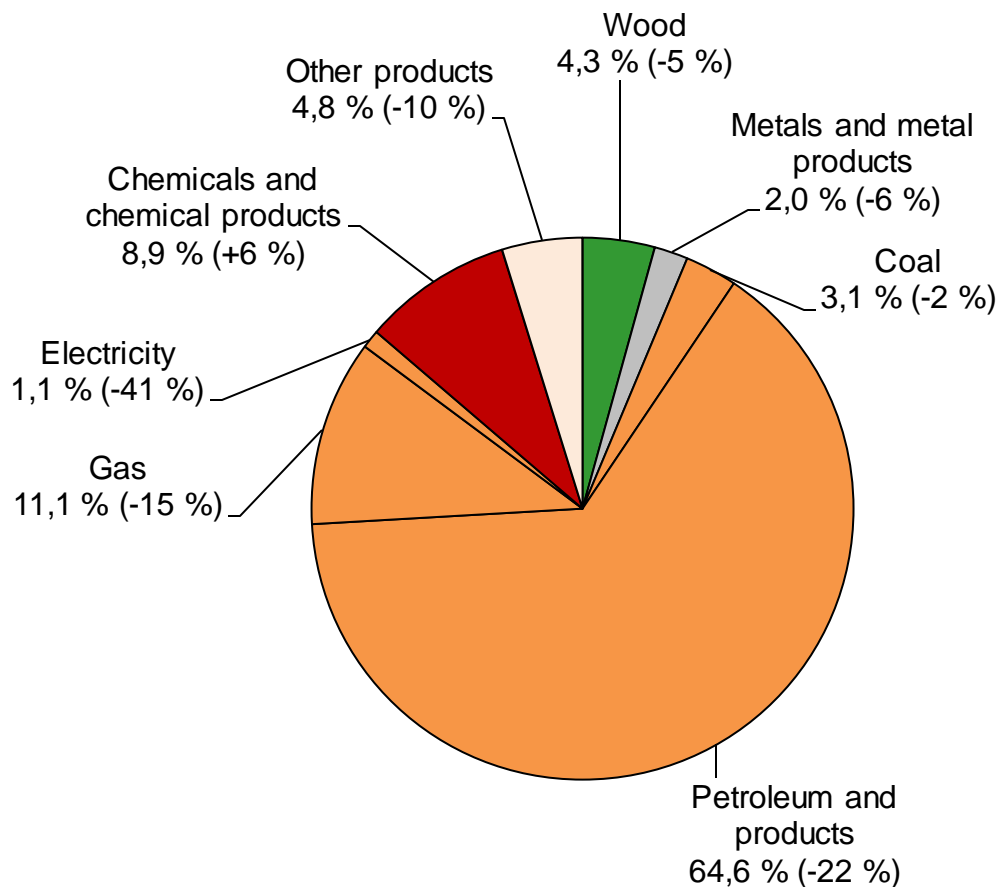


Total value of exports to Germany in 2014 was EUR 6,7 billion (+24 %)

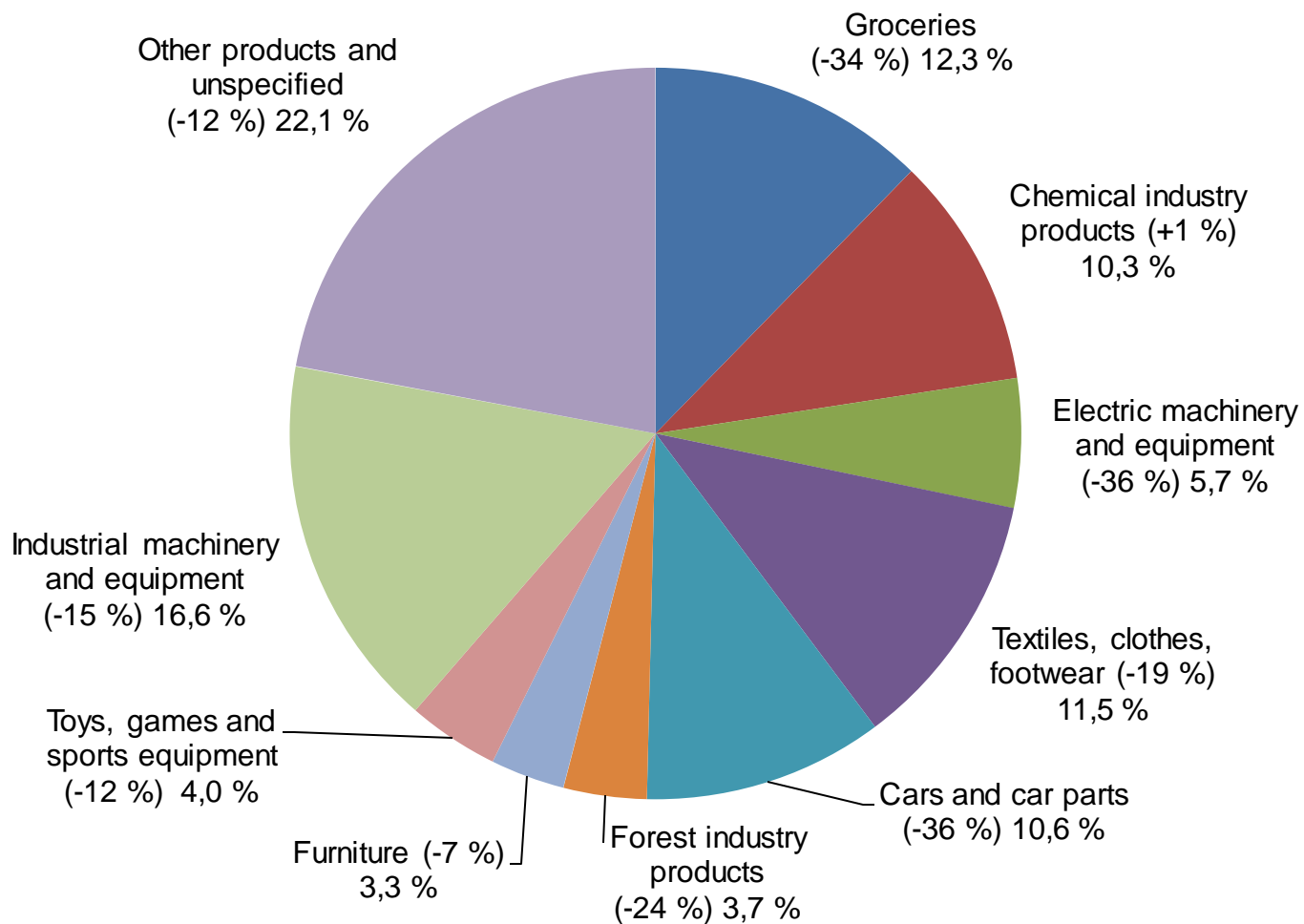


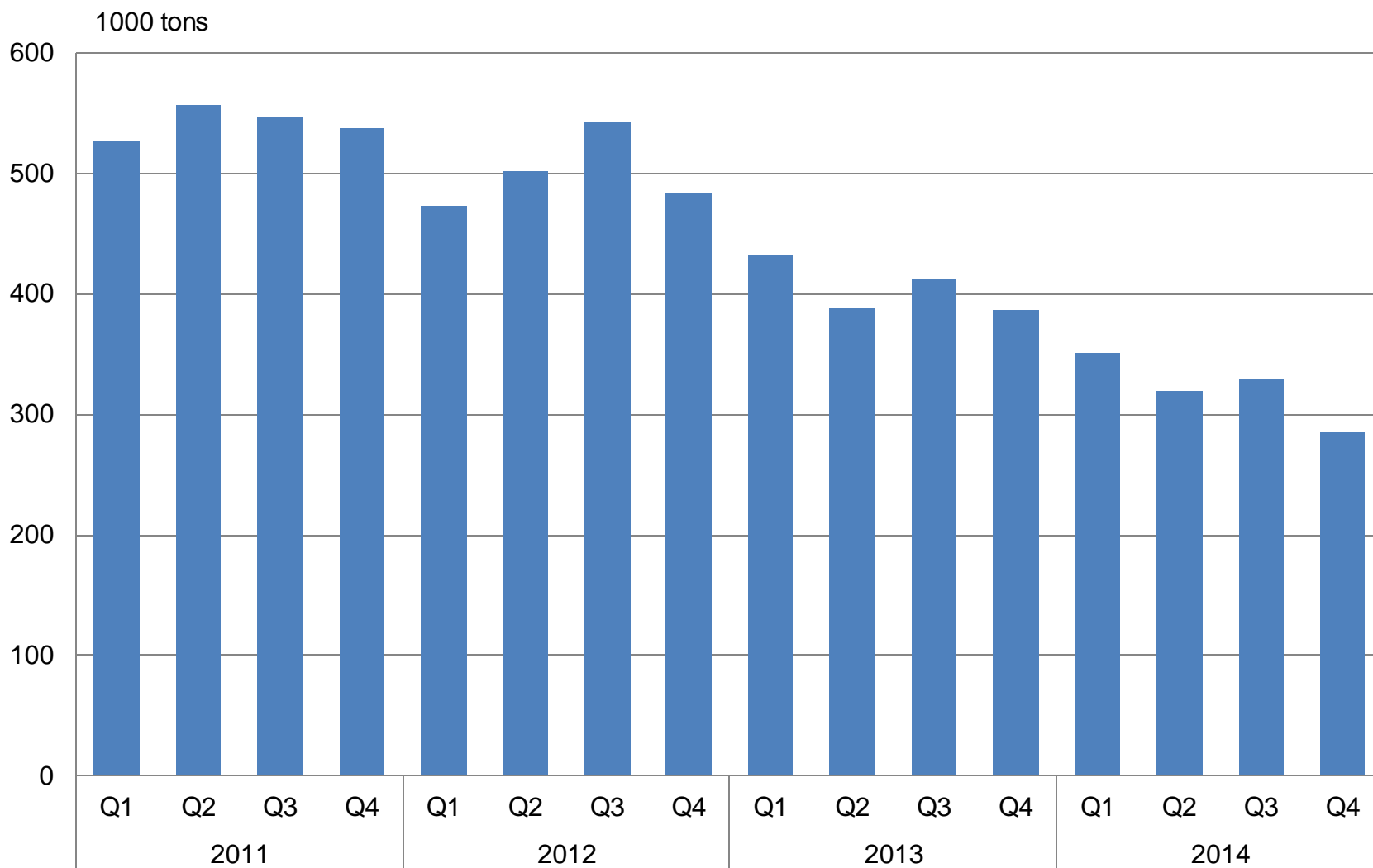


Total value of exports to Russia in 2014 was EUR 4,6 billion (-14 %)



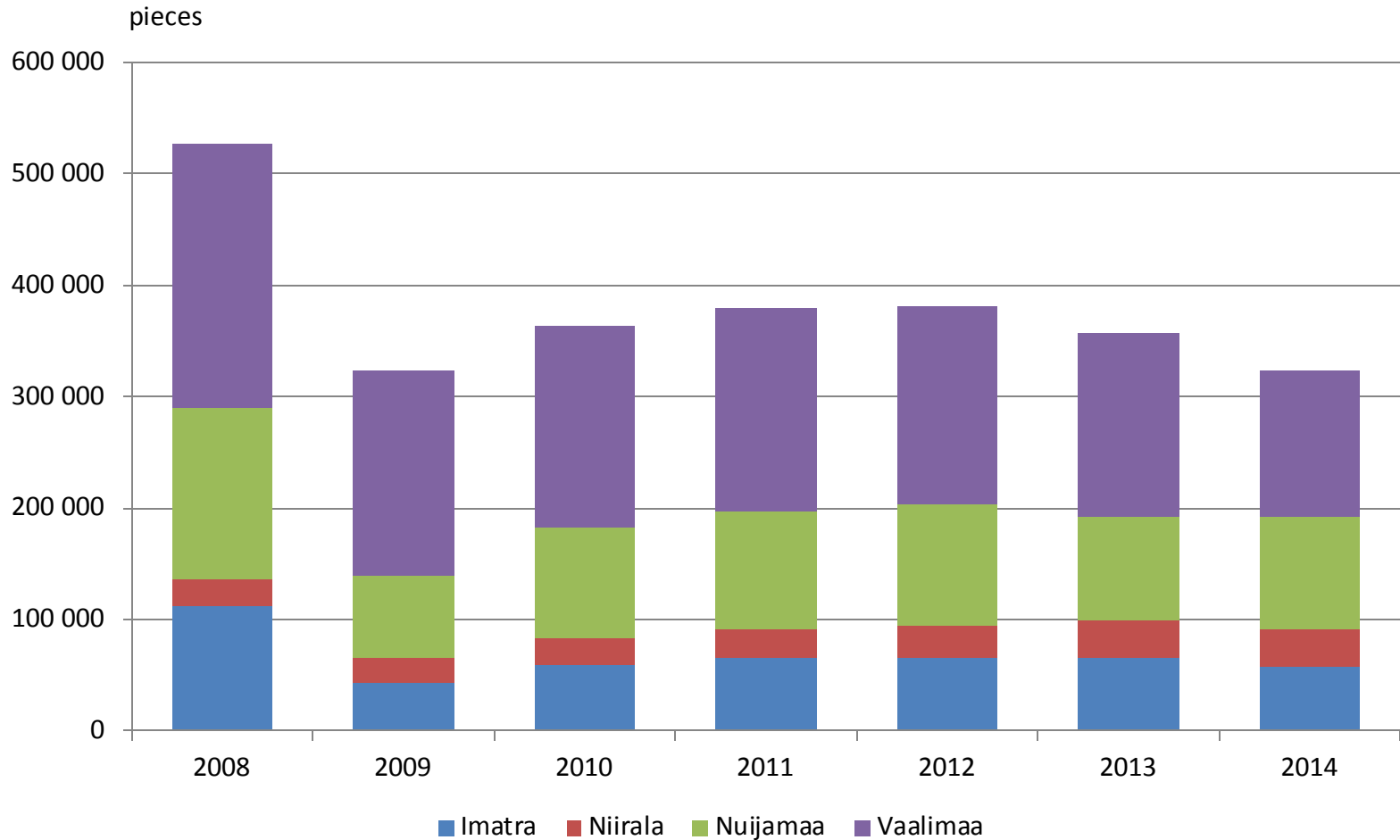
Total value of imports from Russia in 2014 was EUR 8,7 billion (-18 %).
Energy products' share of total imports from Russia was 79,9 %.

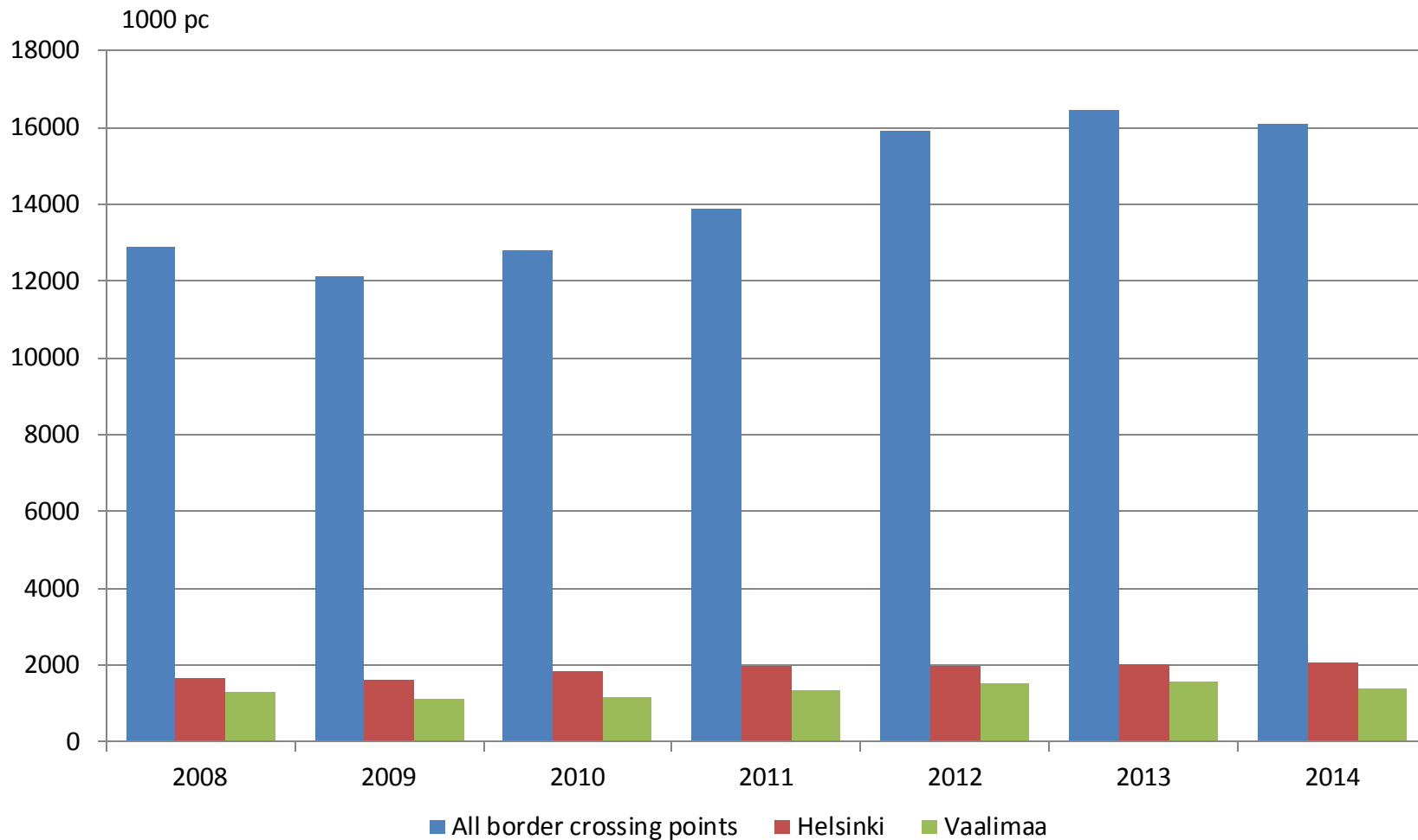


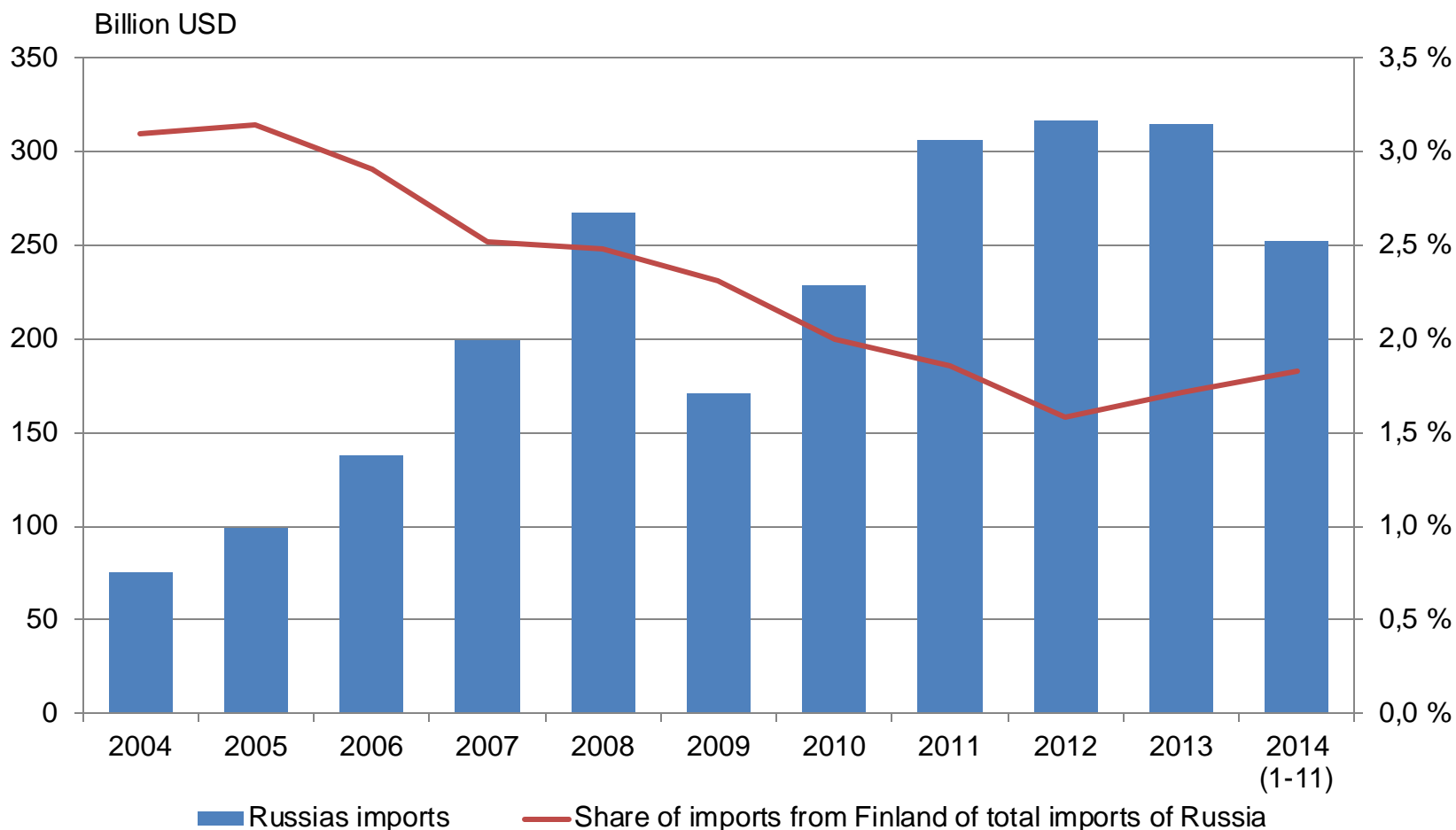




Lorries with cargo per year 2008-2014 (pieces)







- Source: UN Comtrade