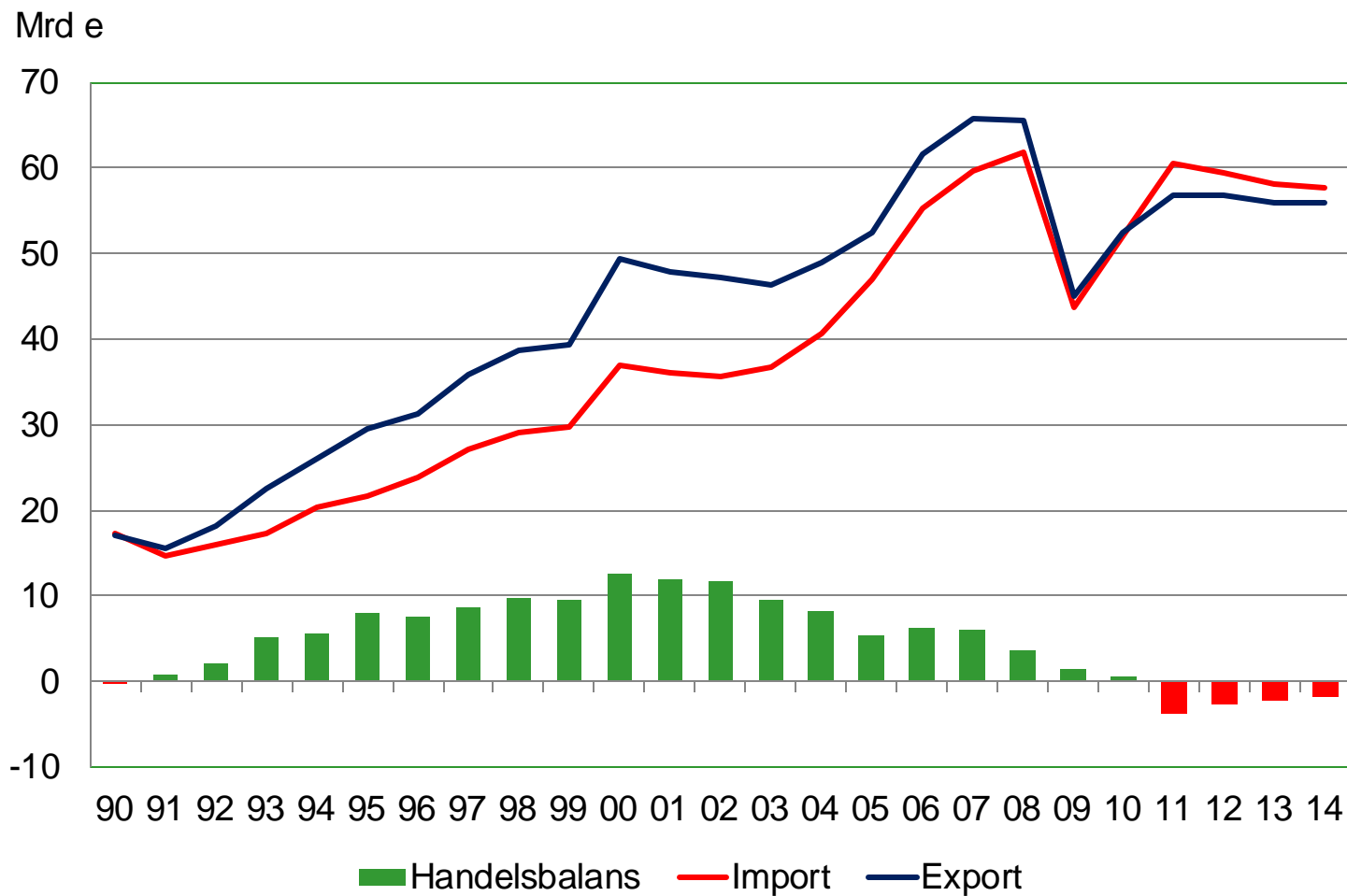
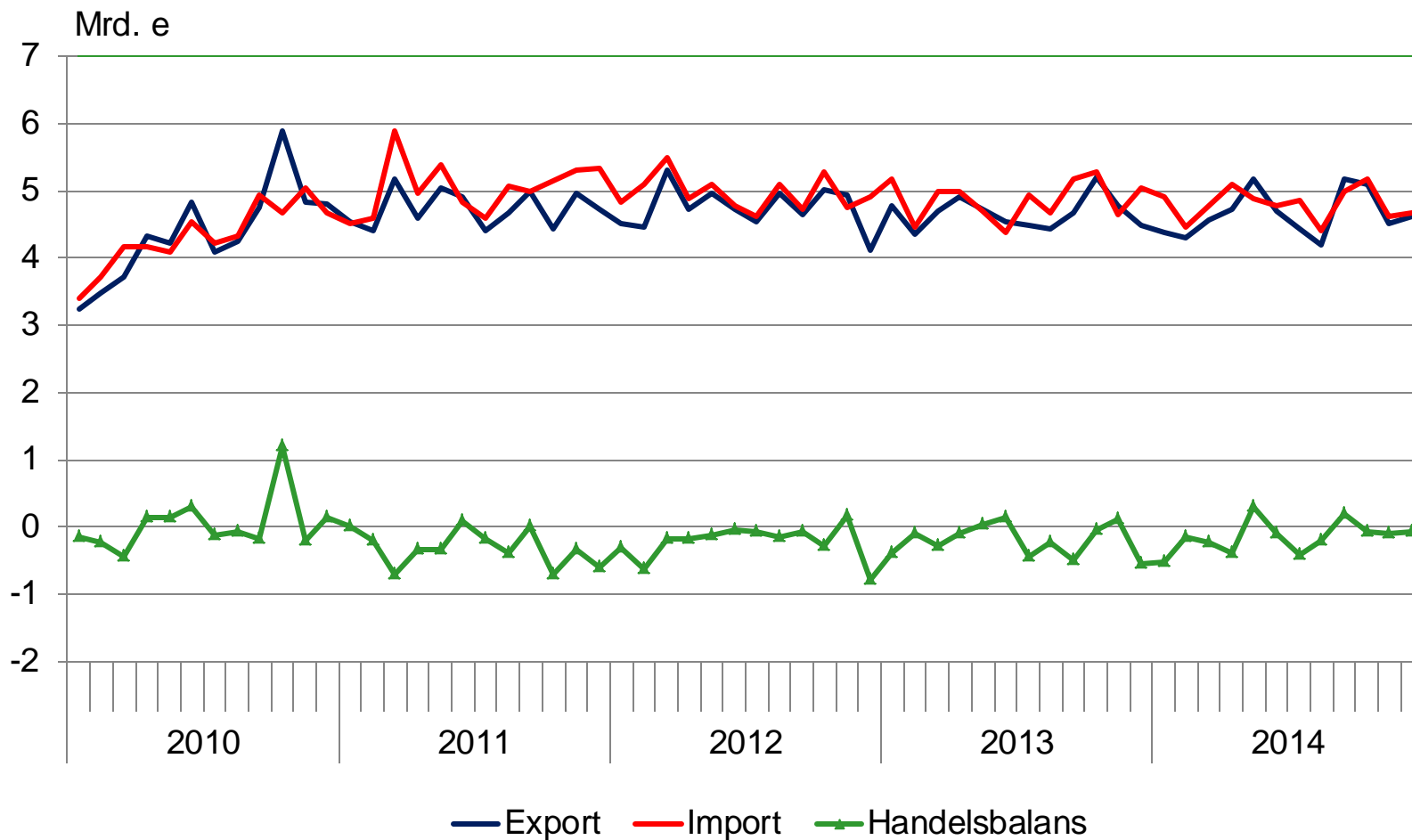


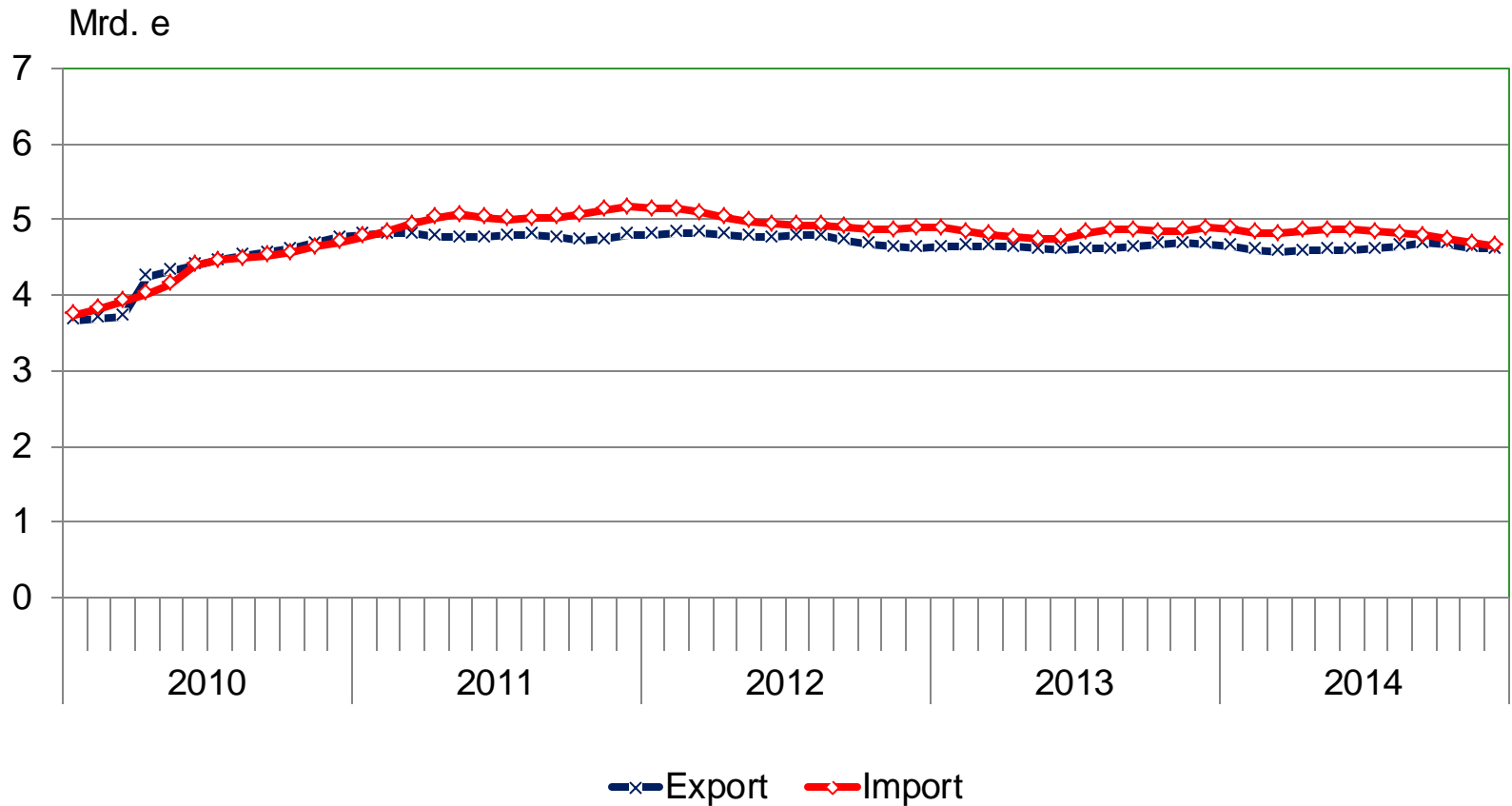


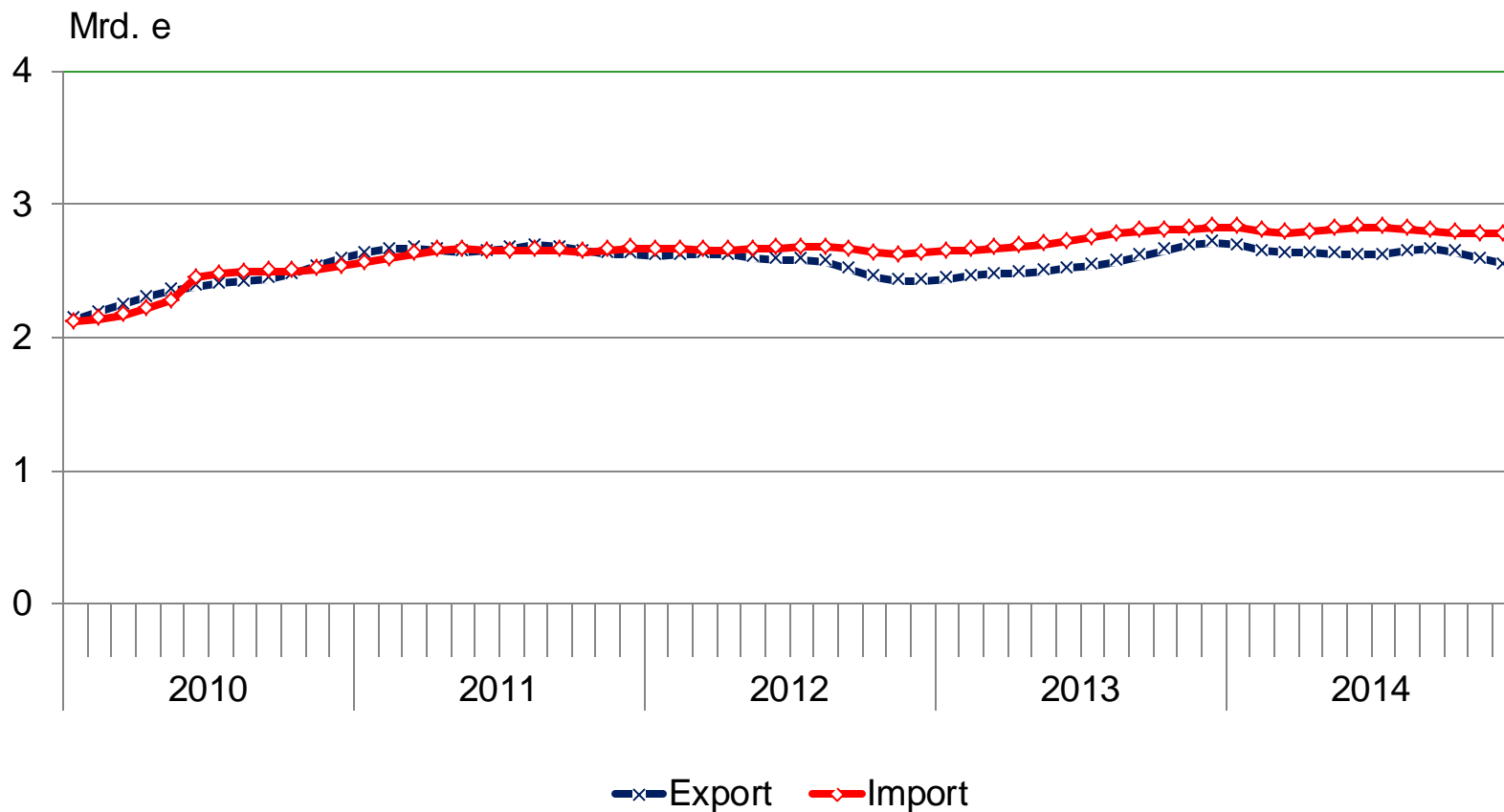
Finlands utrikeshandel 2014

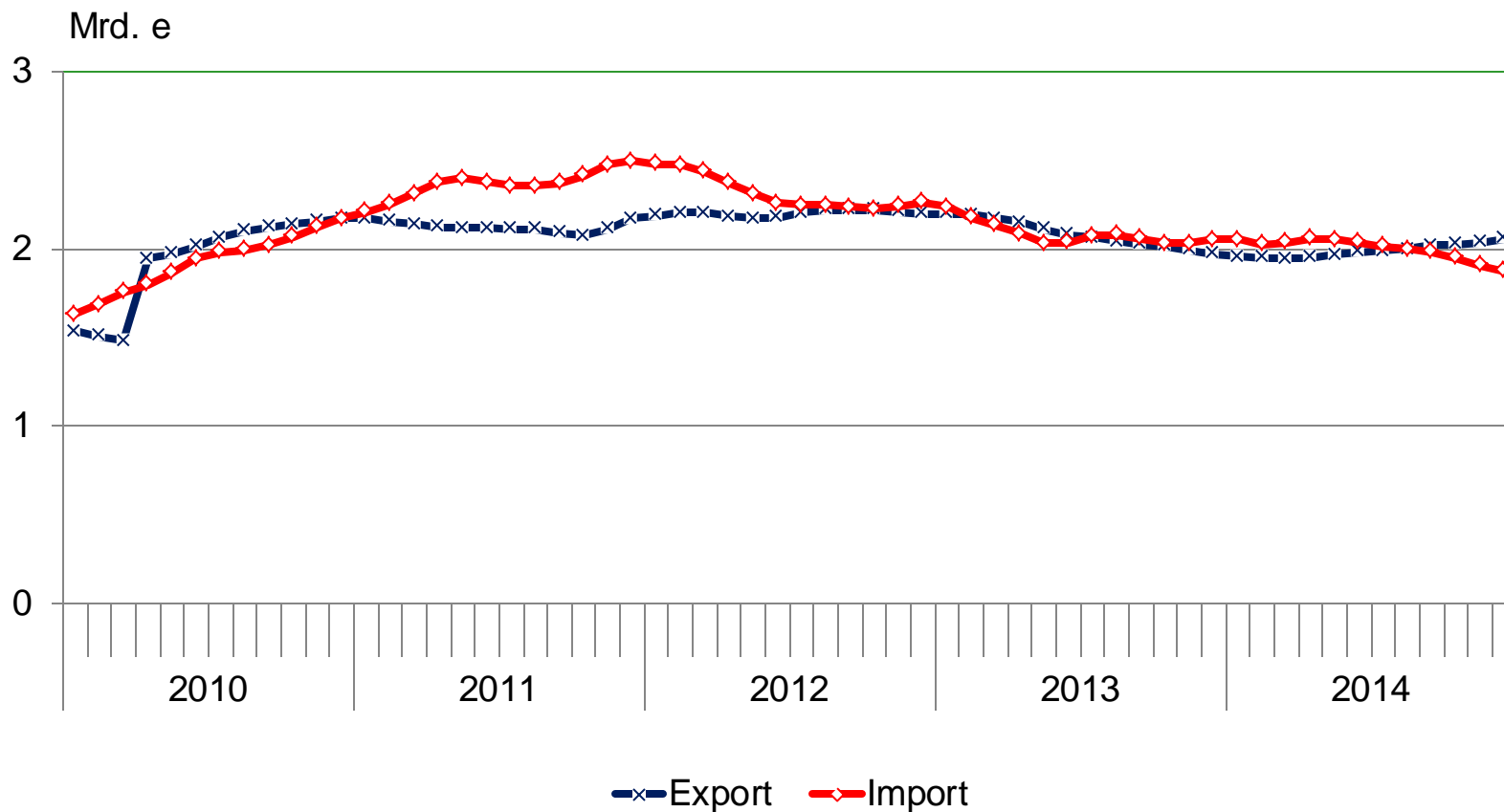
Figurer och diagram

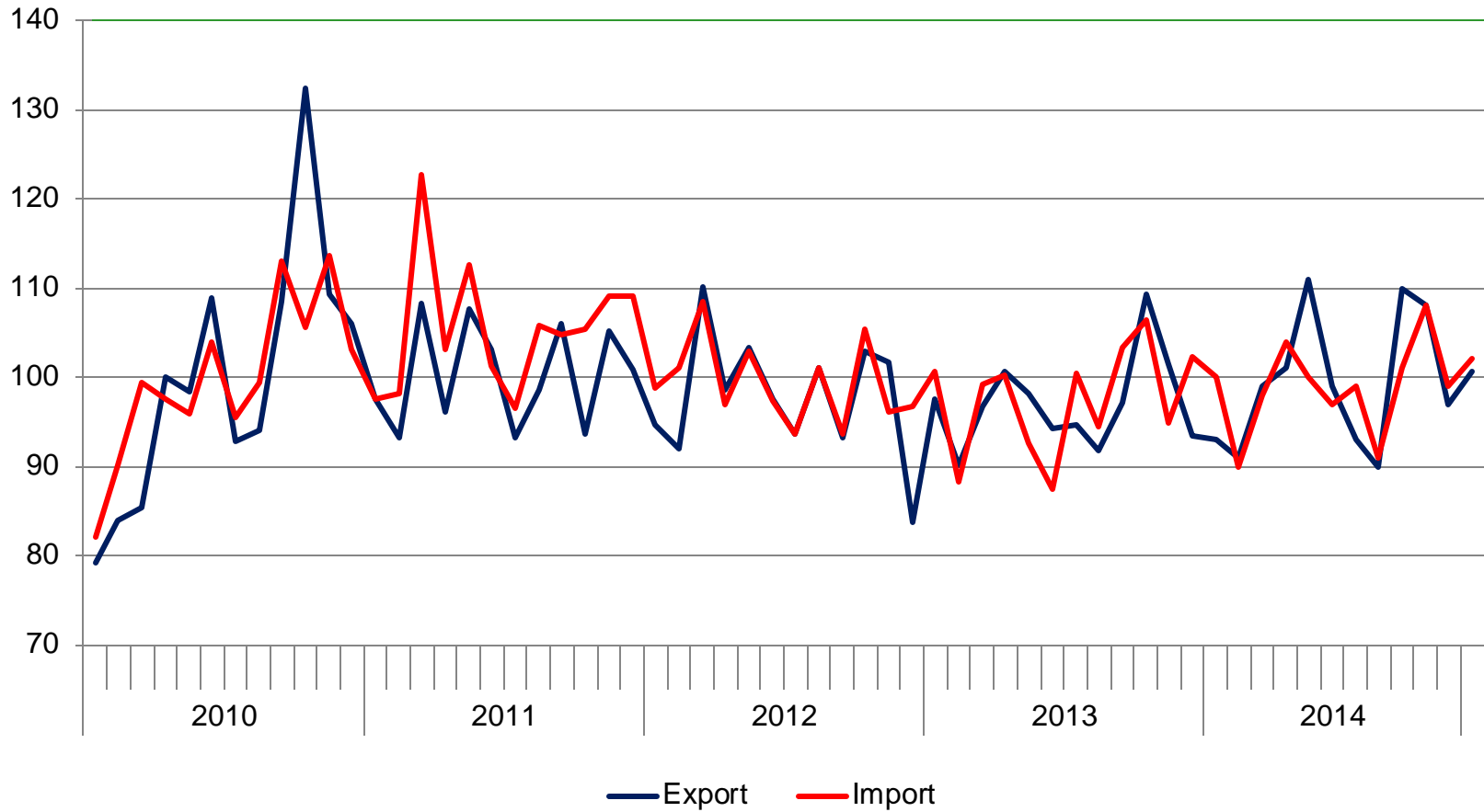


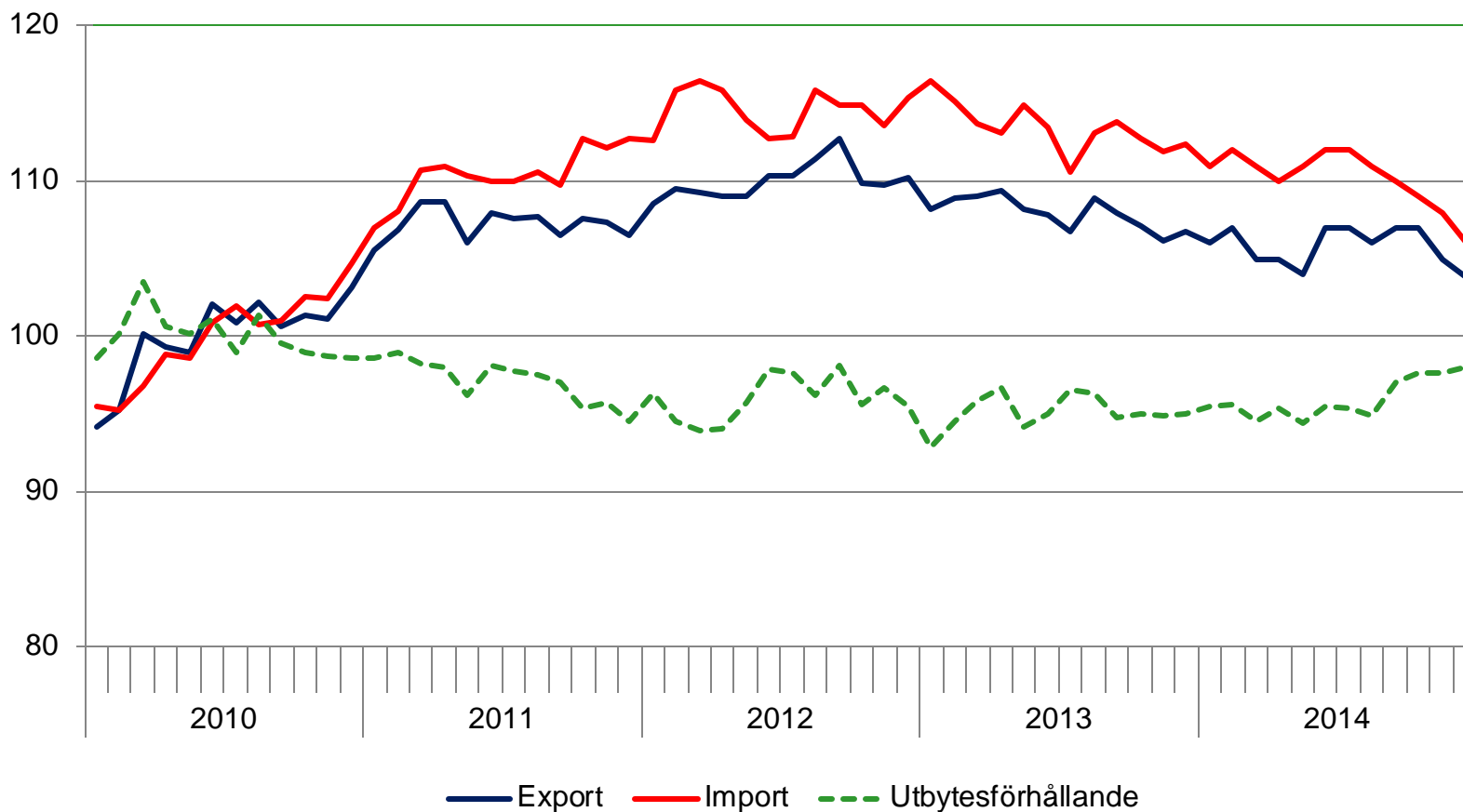


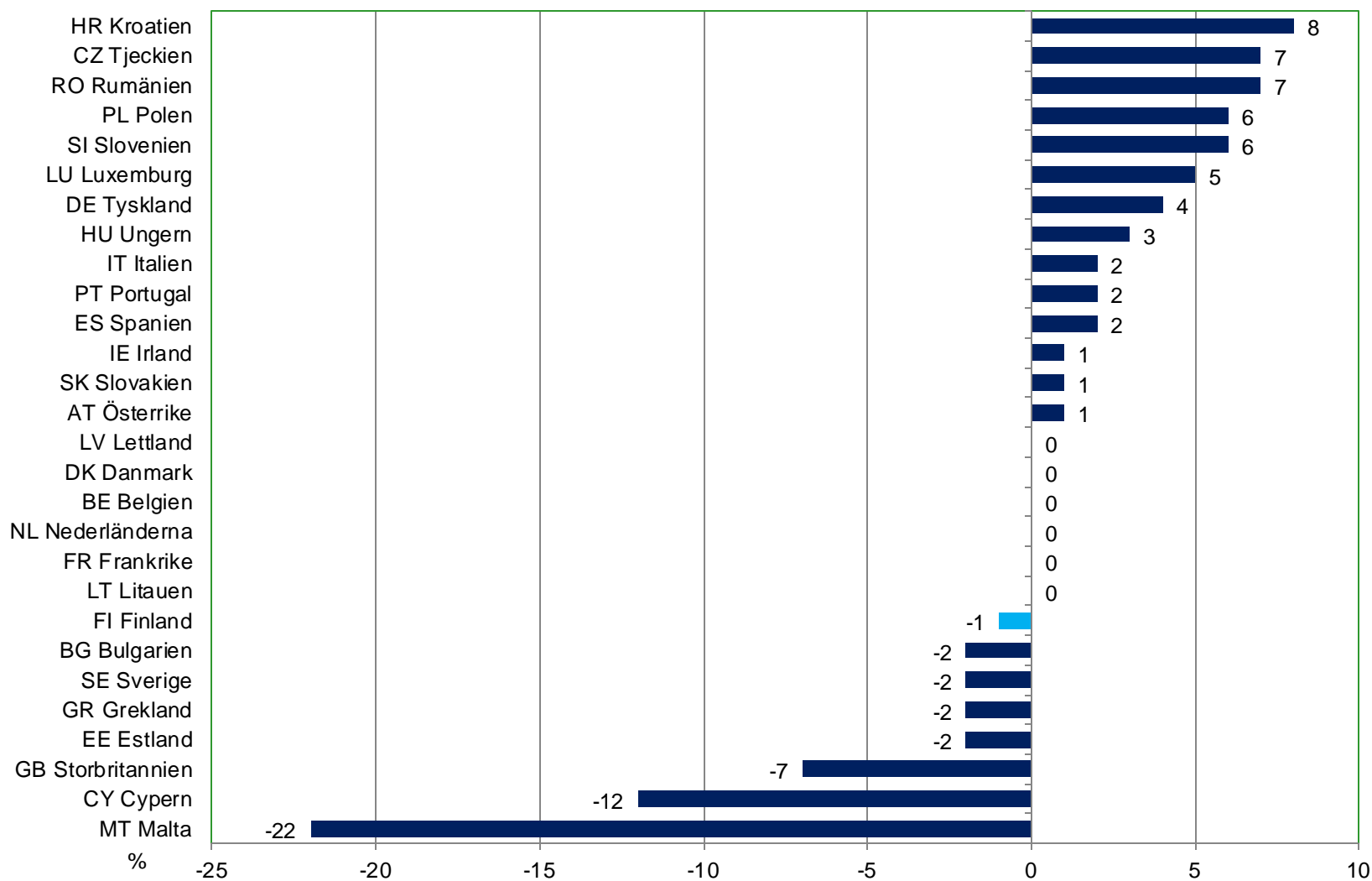


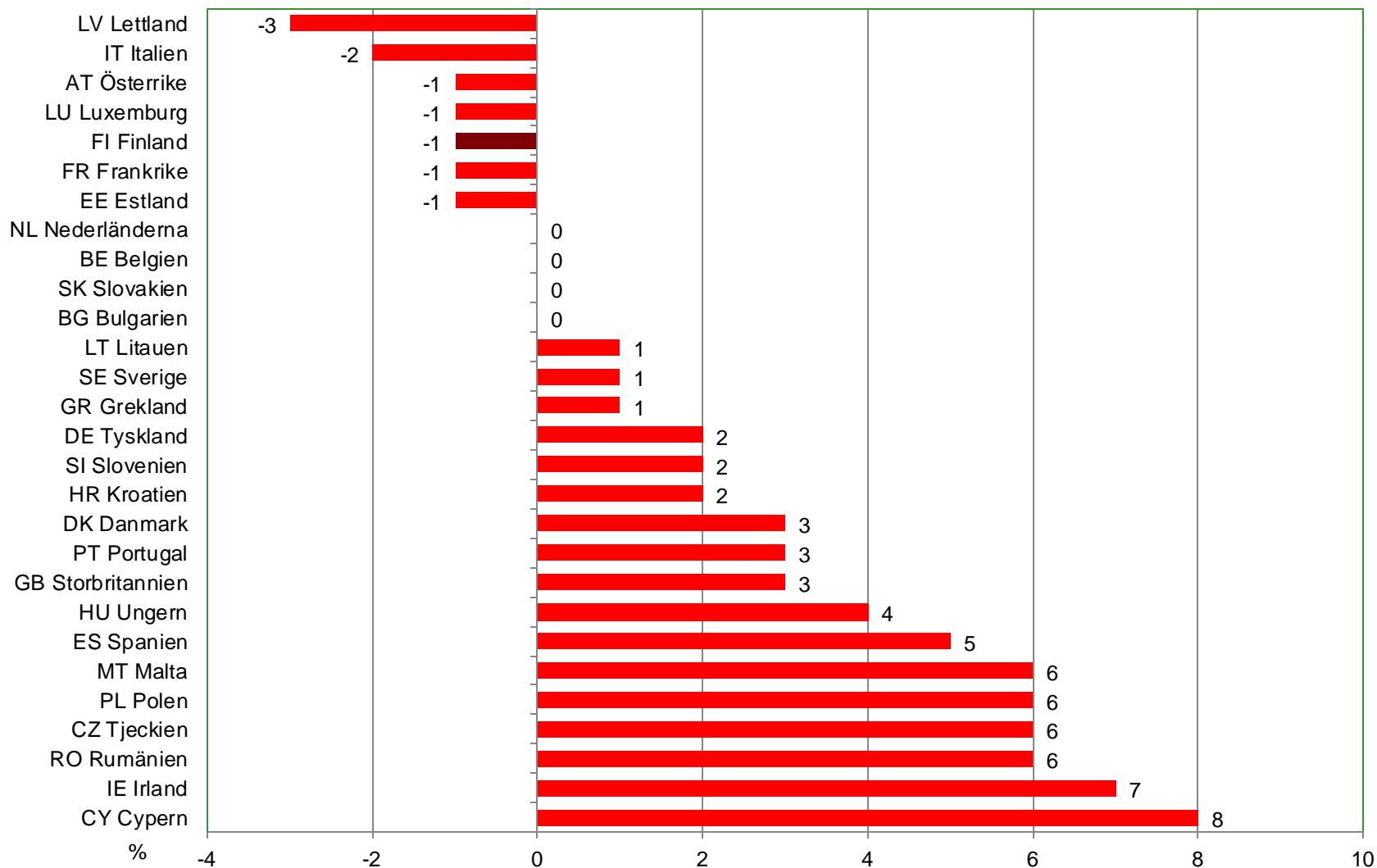


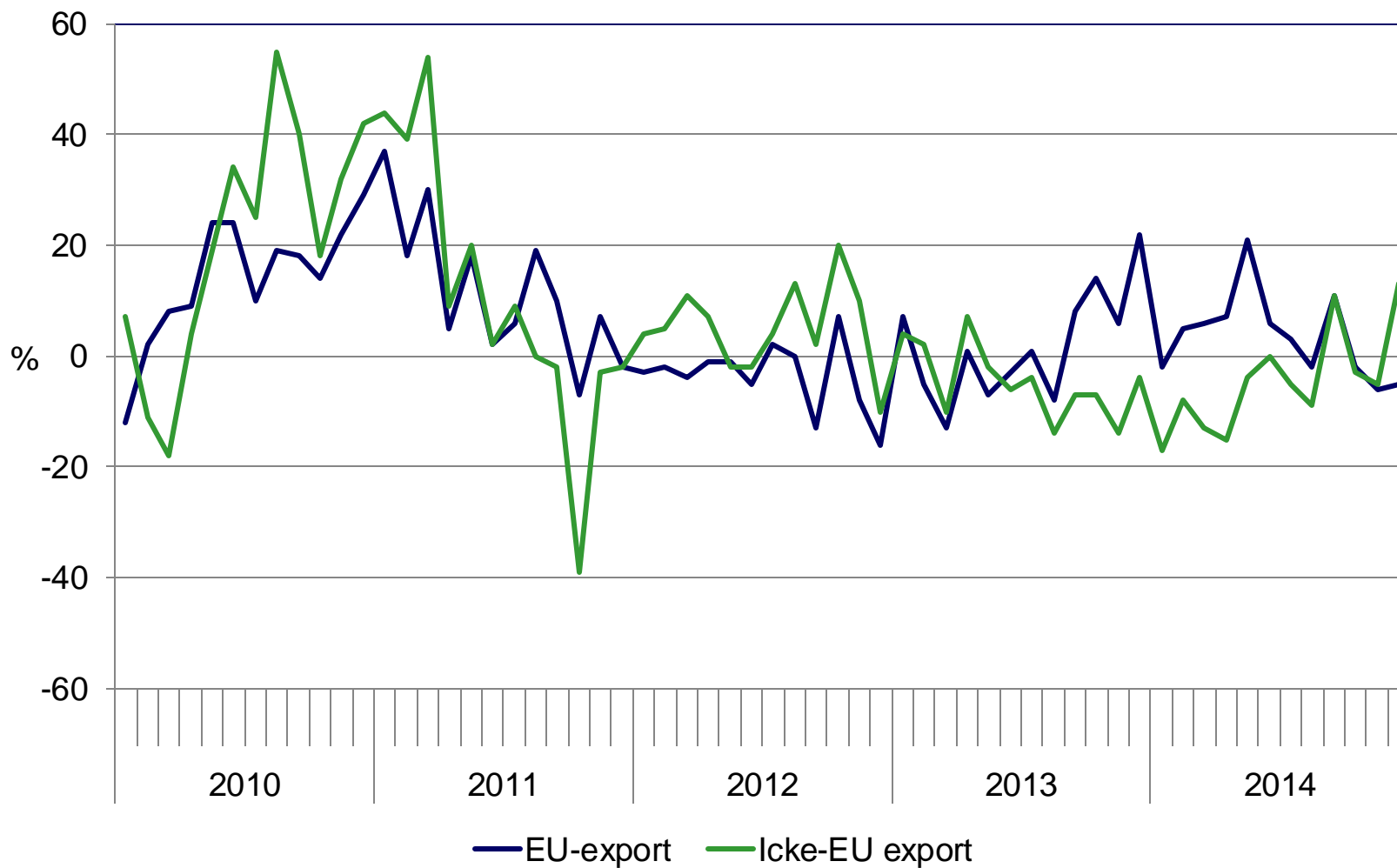


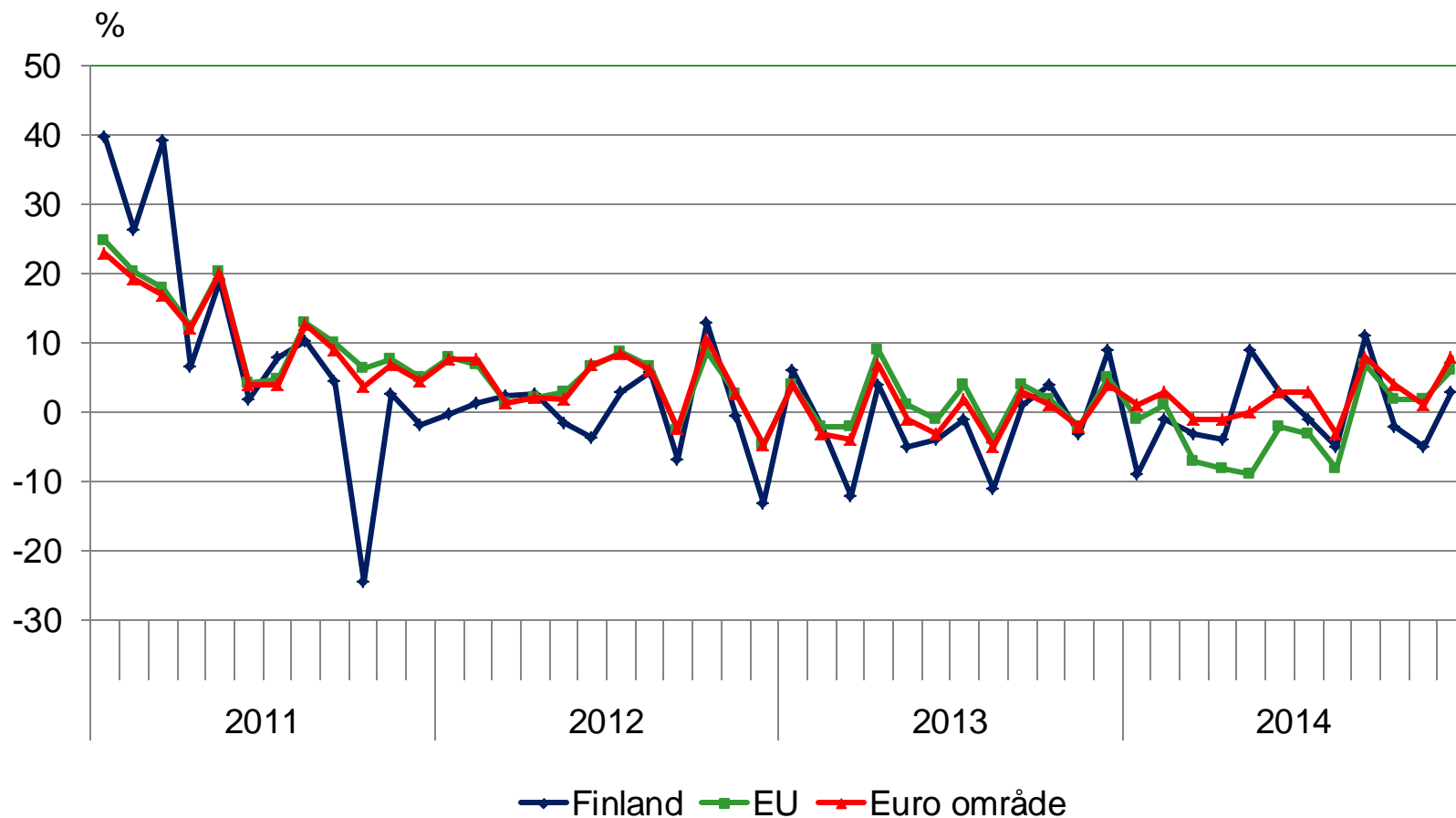




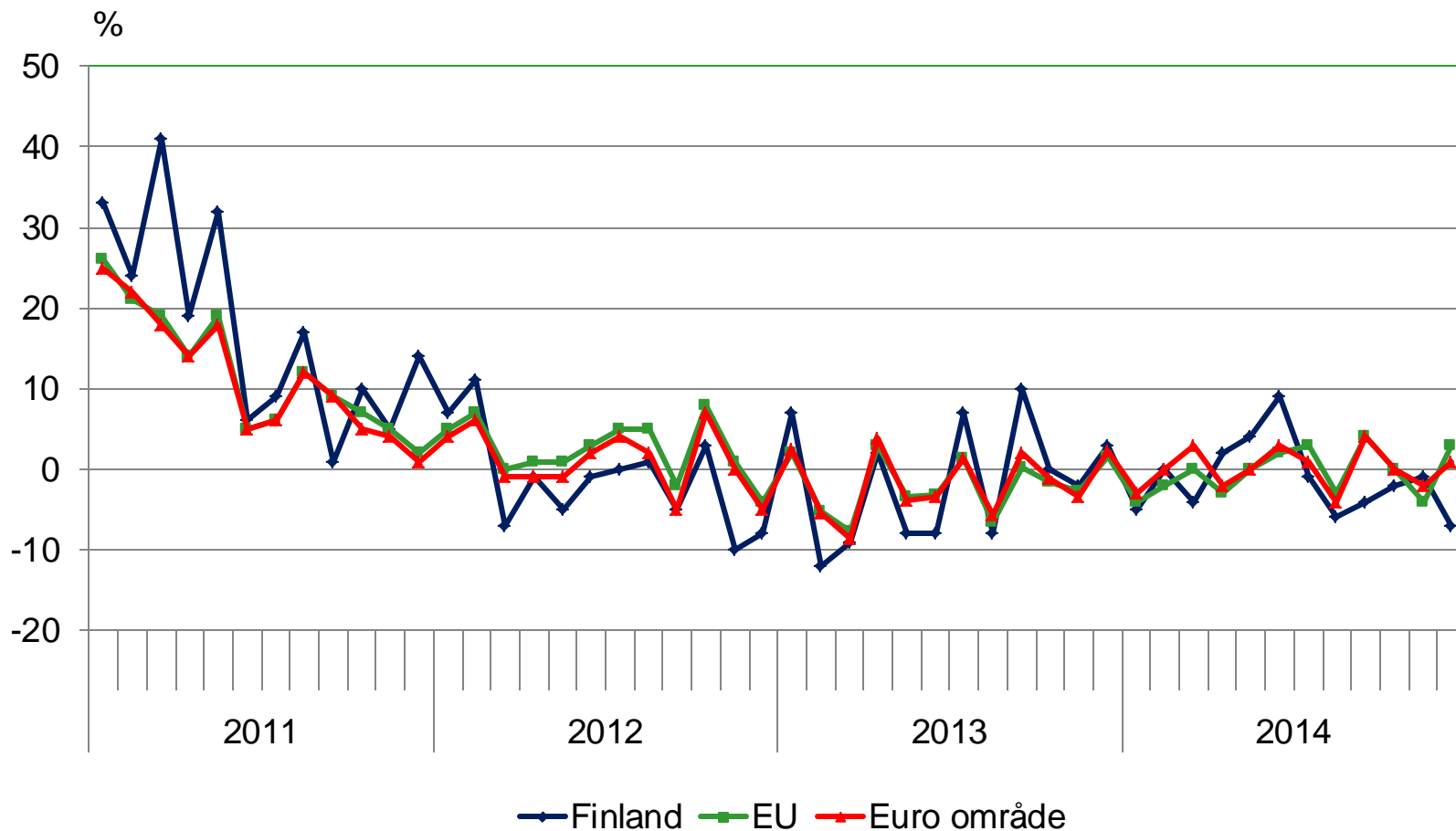




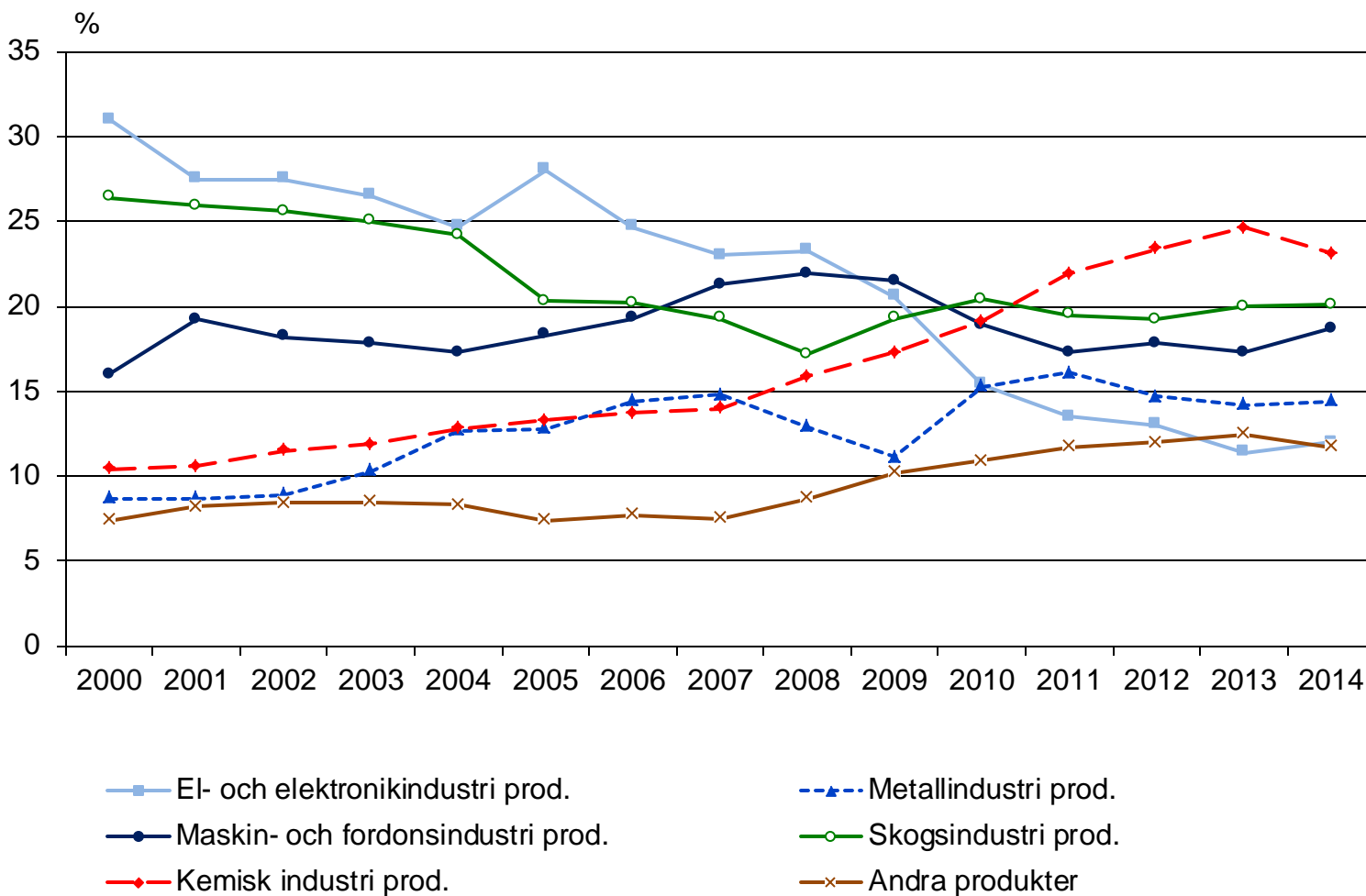


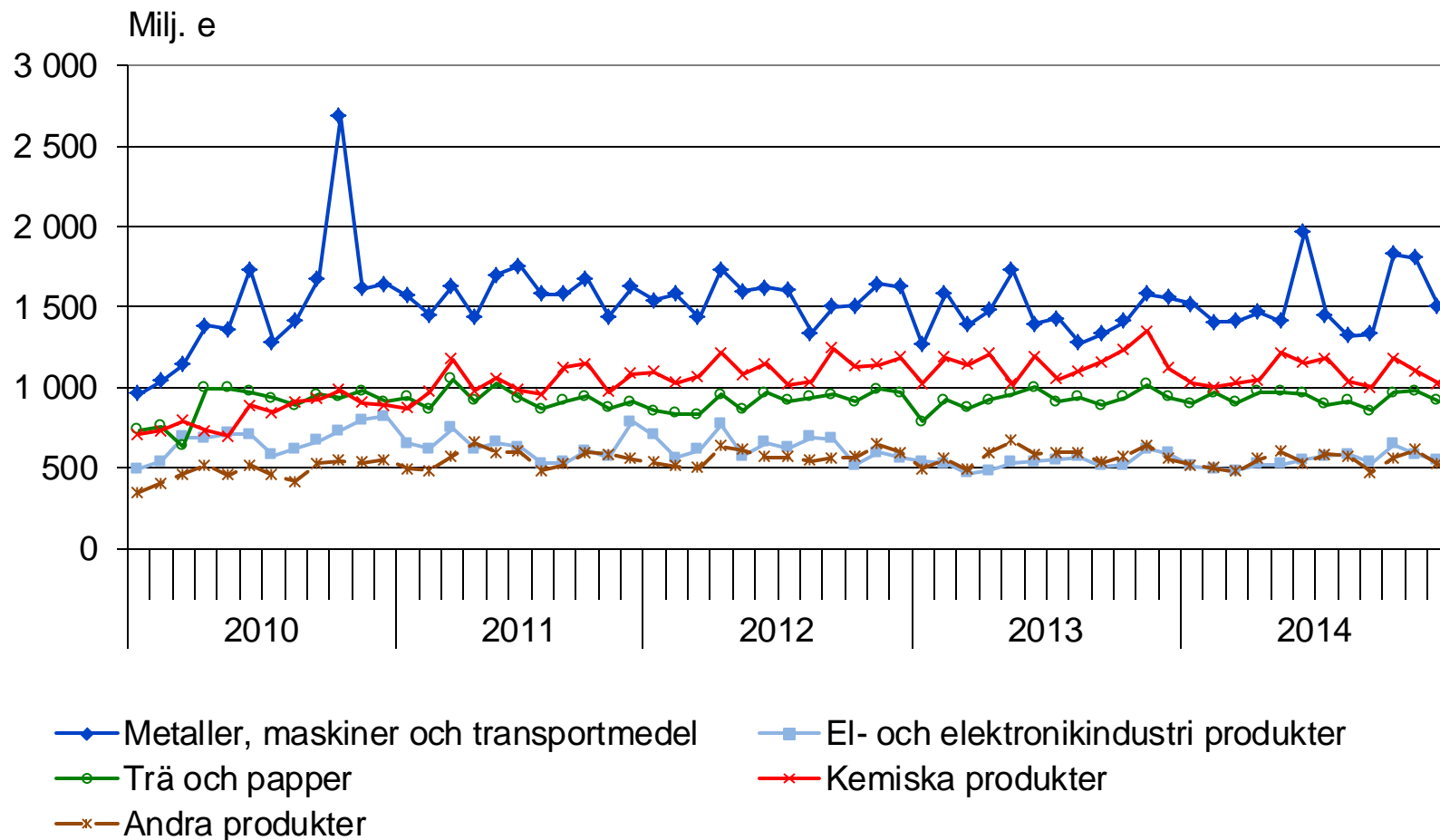


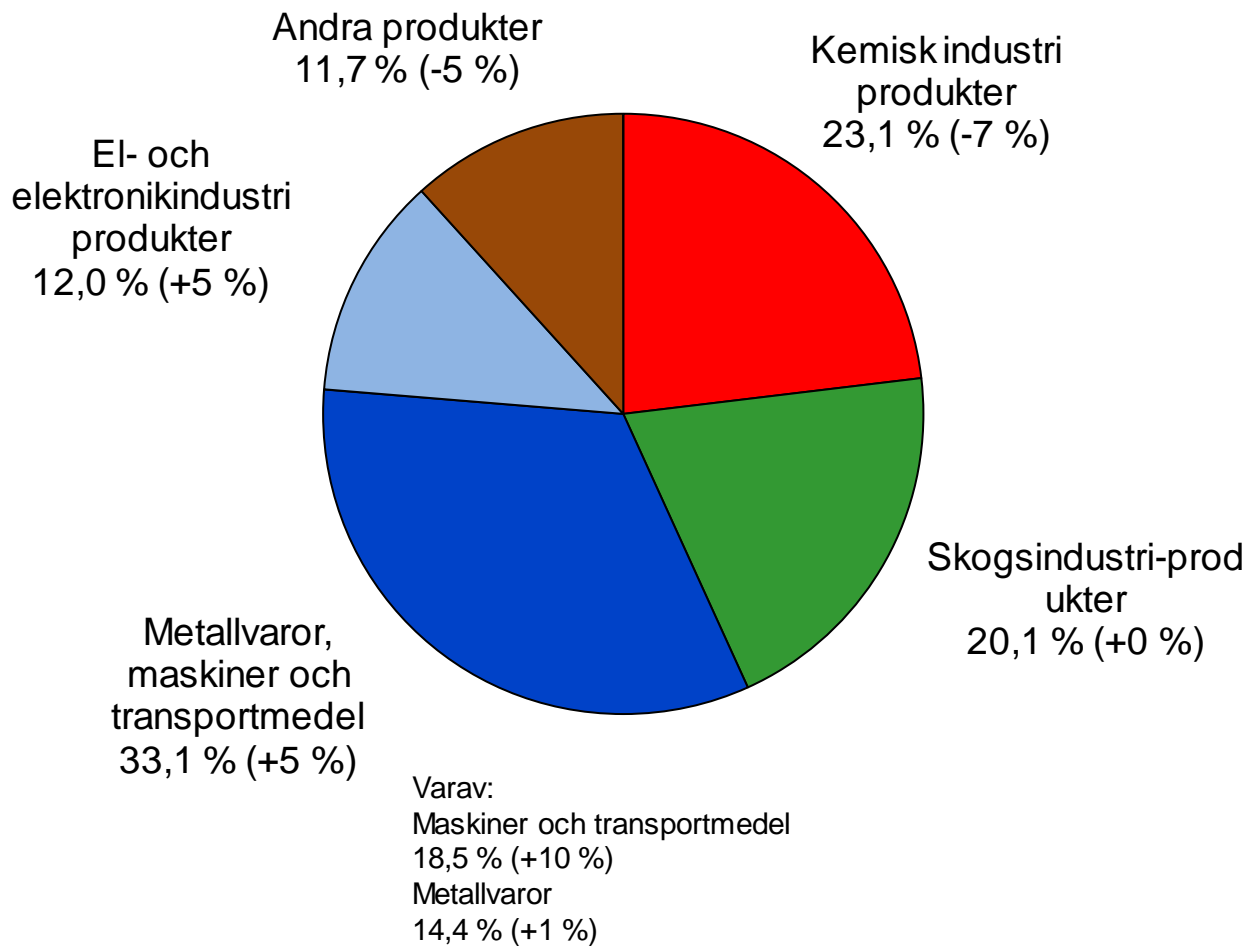
EU och euroområde export: Källa Eurostat Newsrelease

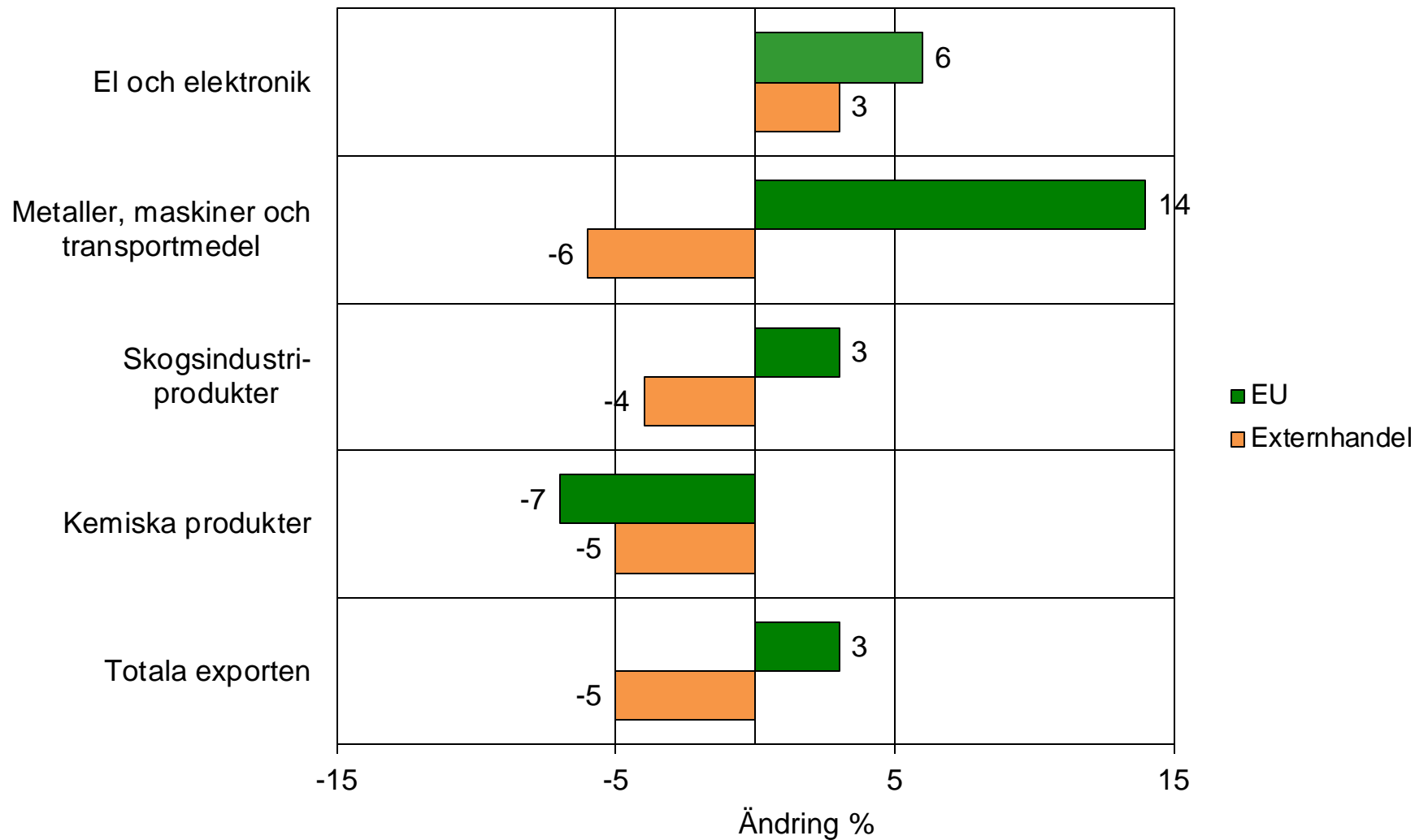


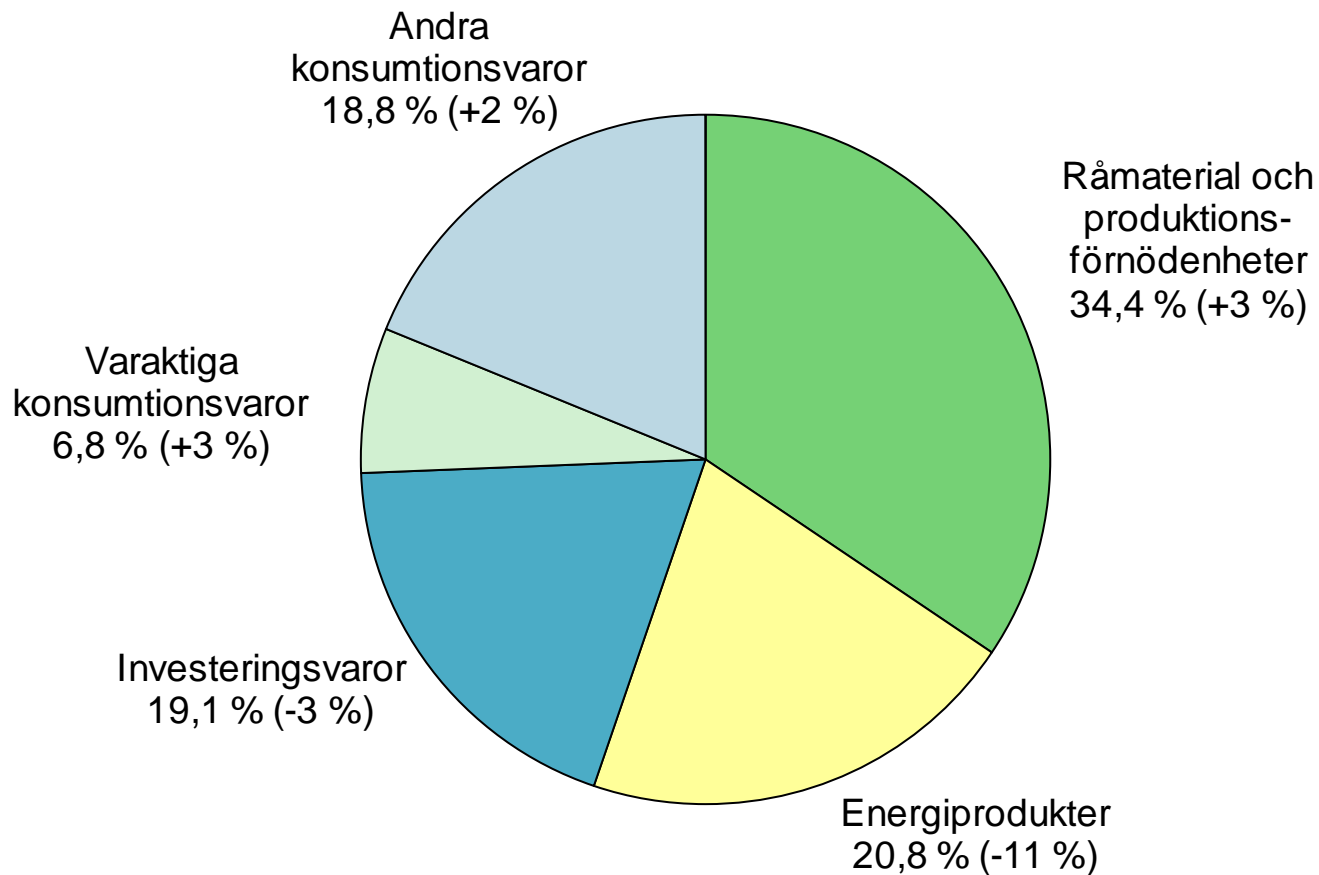
EU och euroområde import: Källa Eurostat Newsrelease

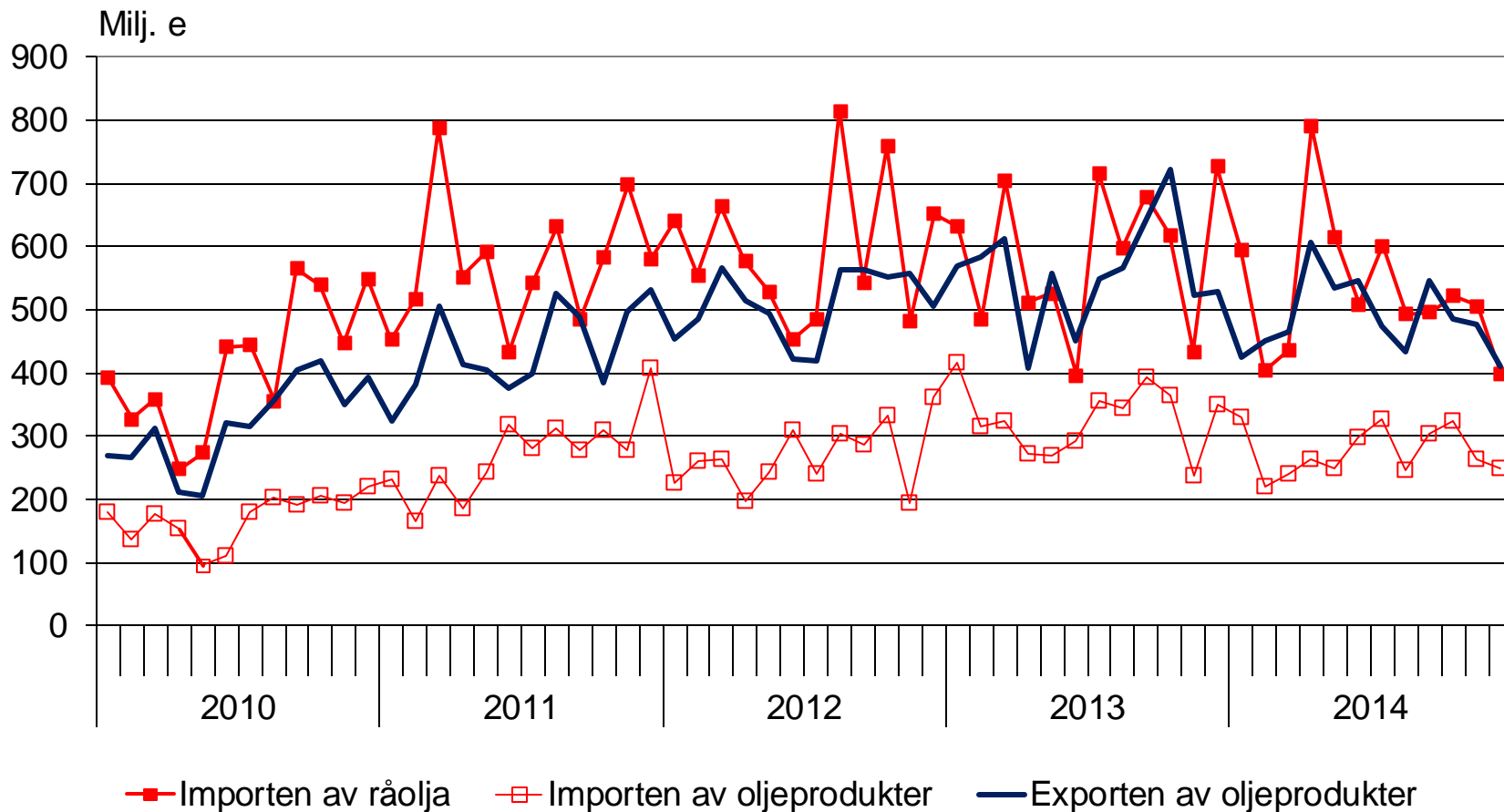


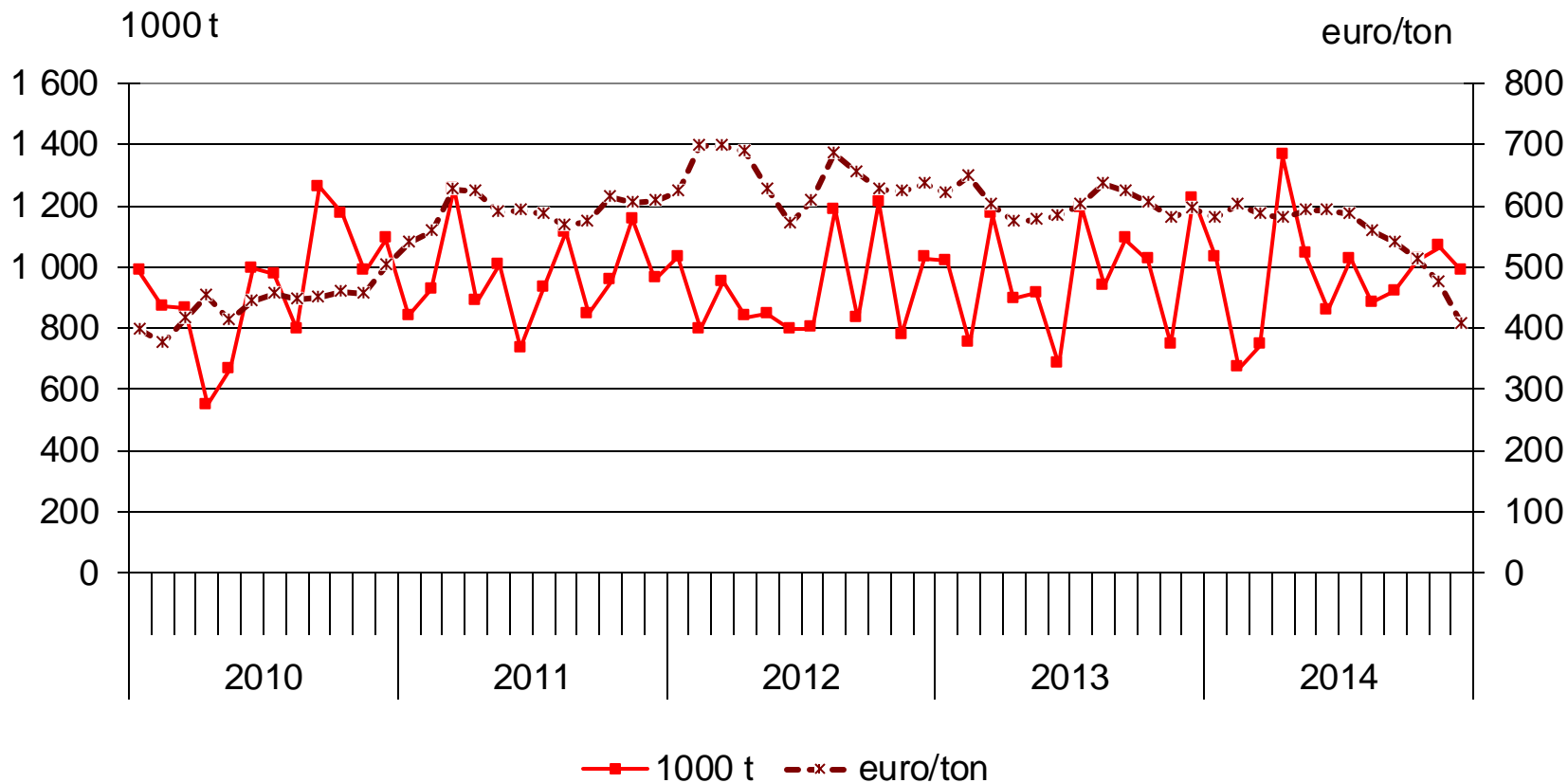


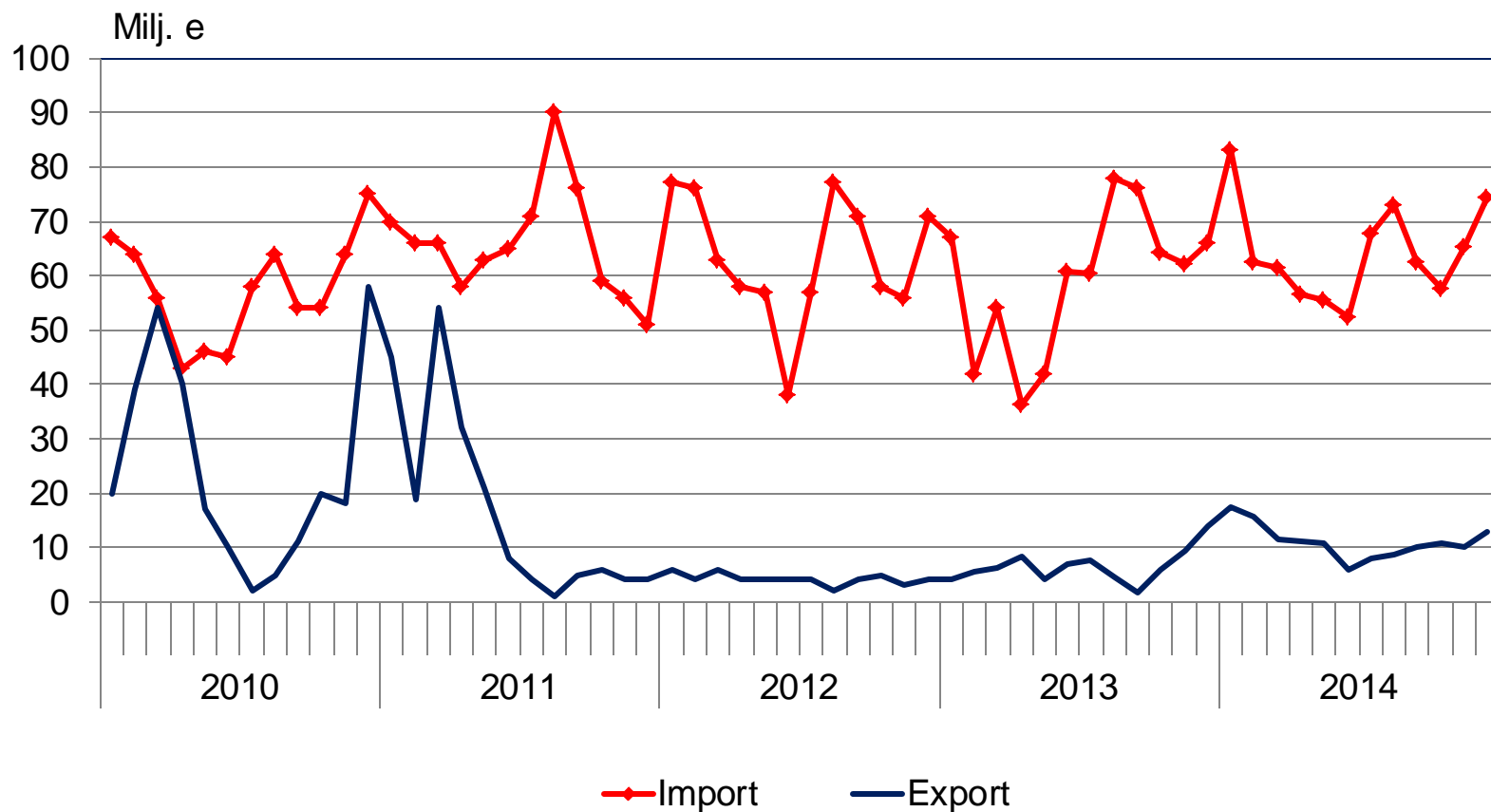


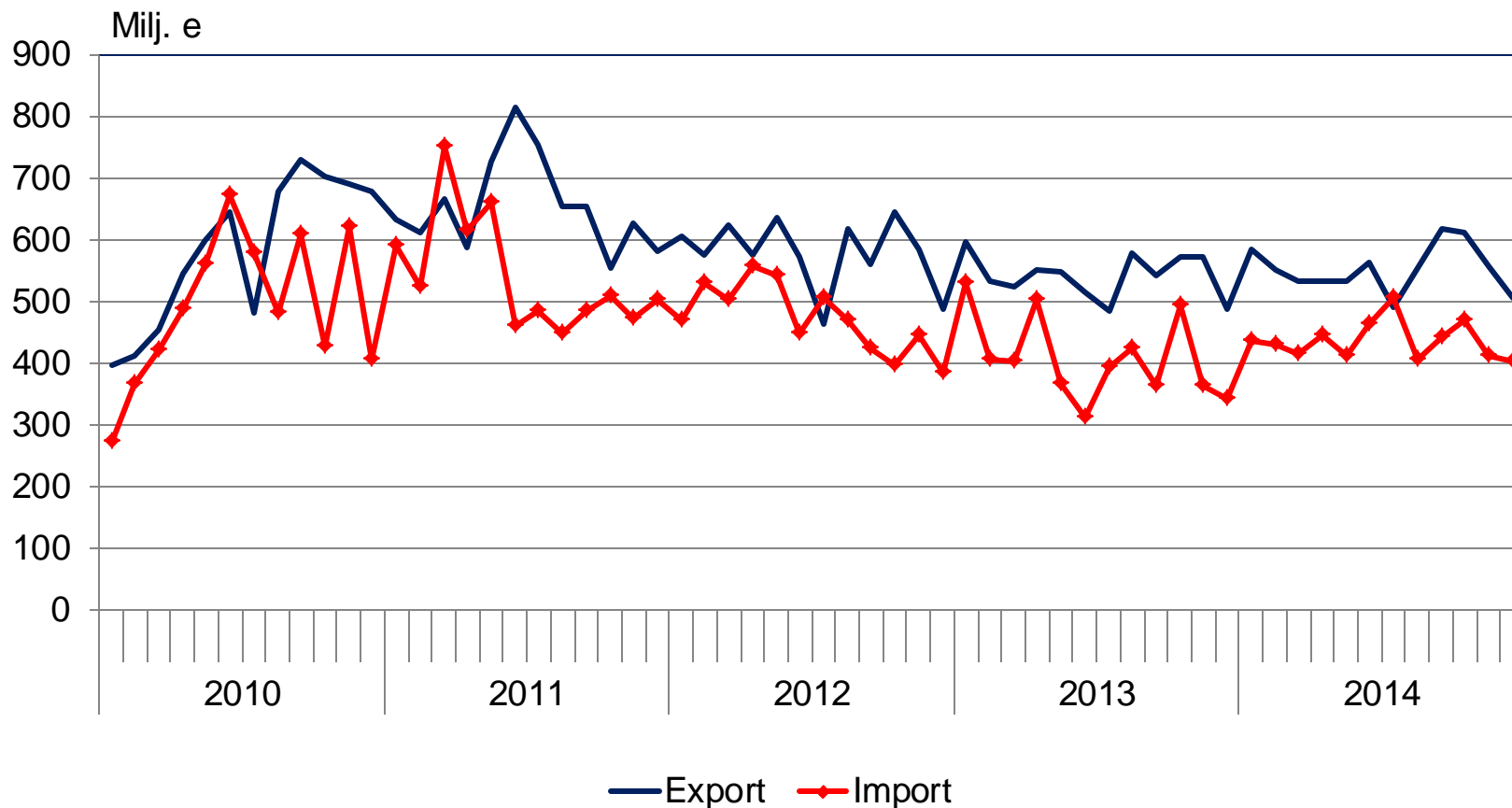


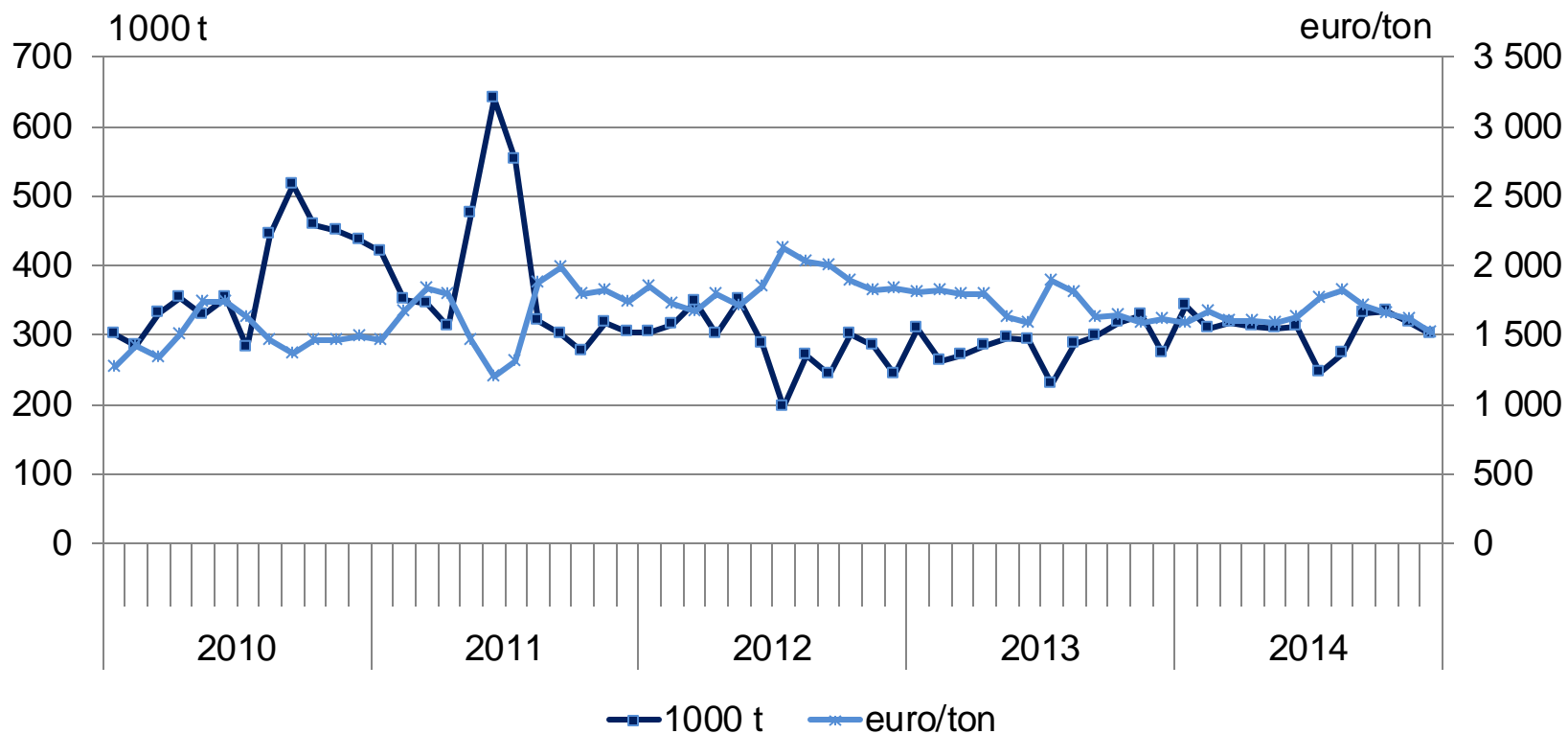


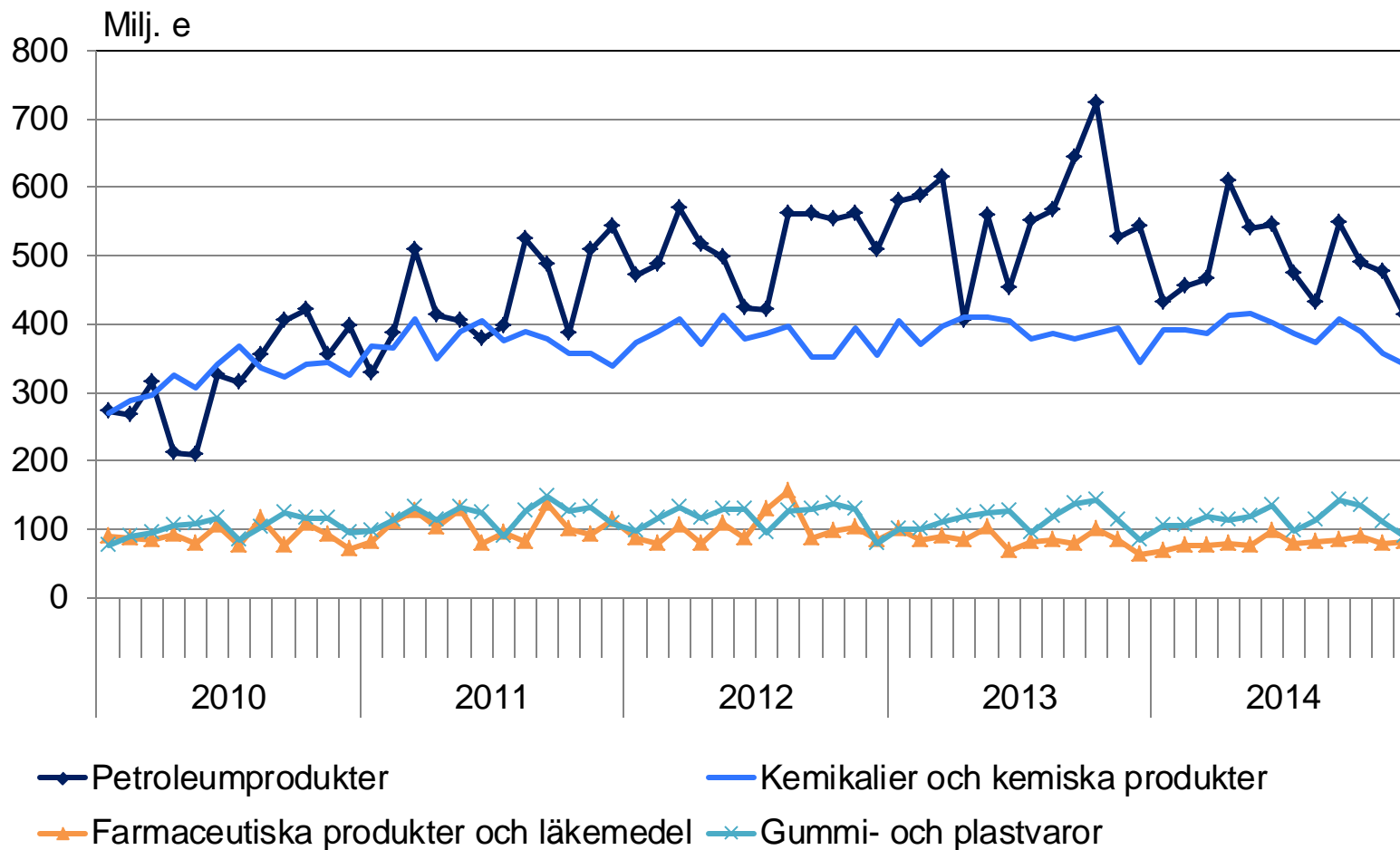


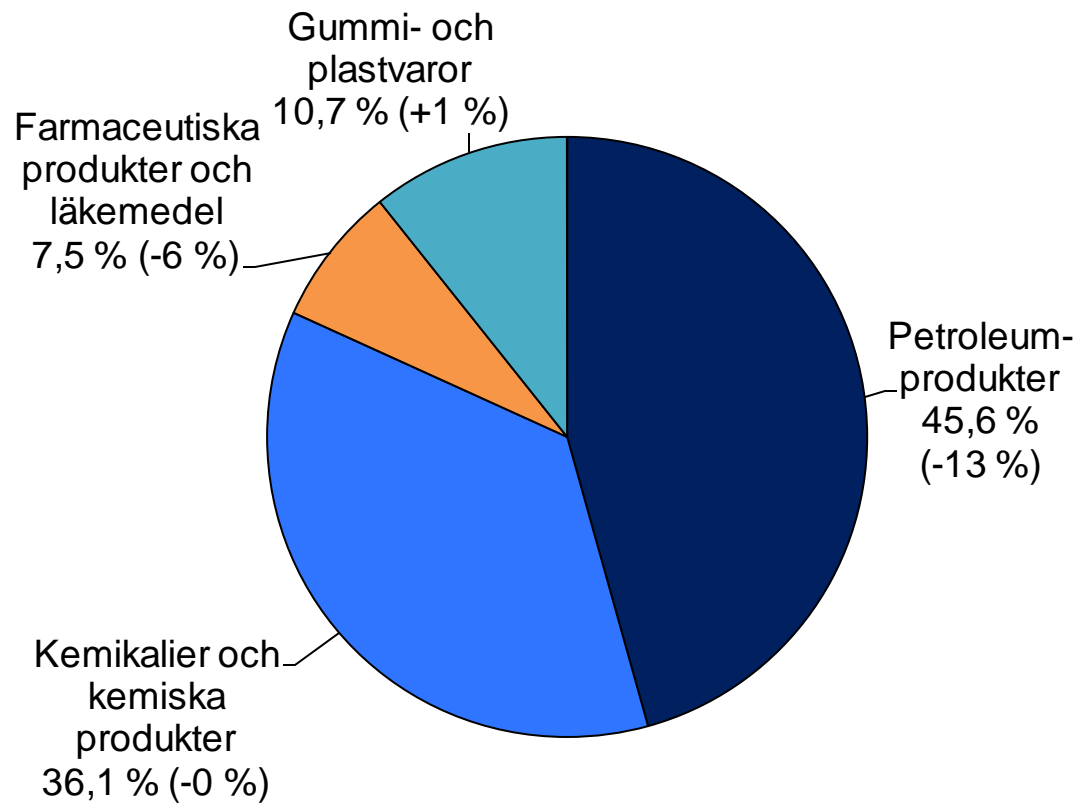


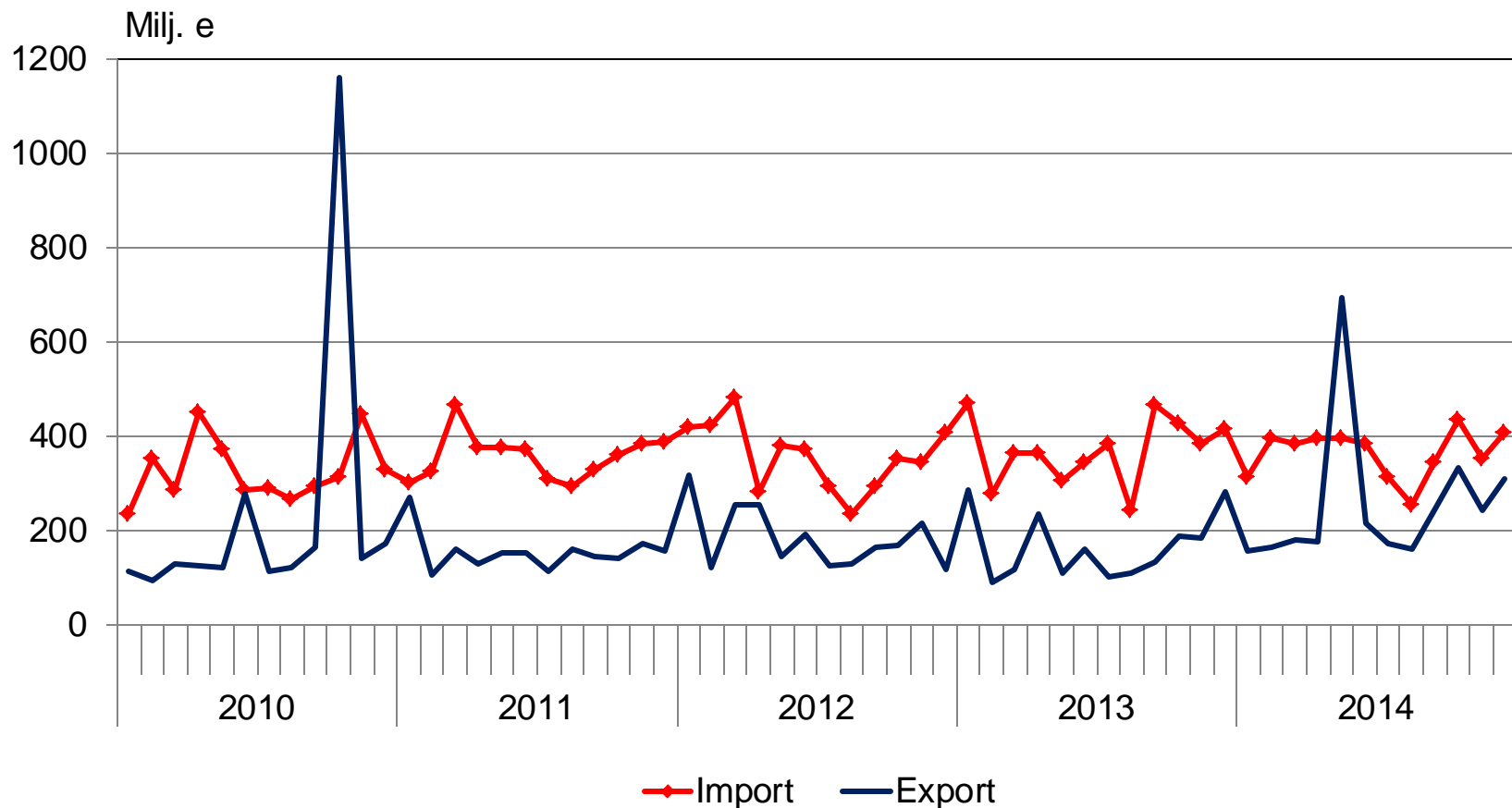


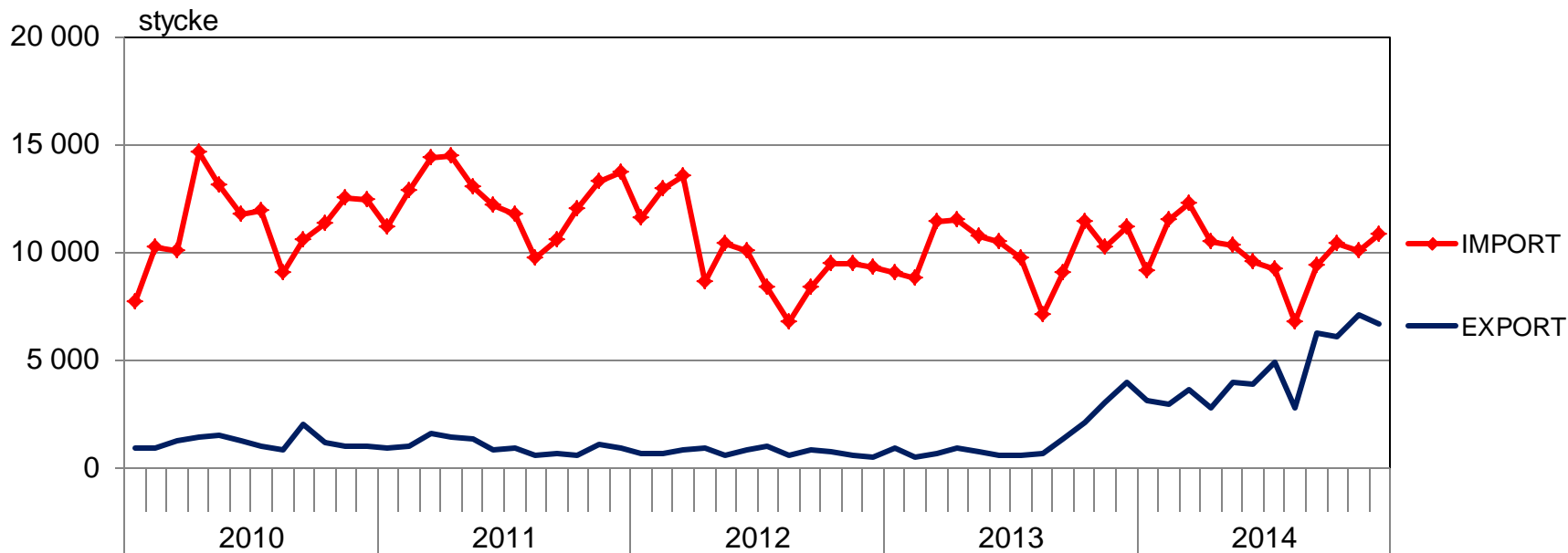






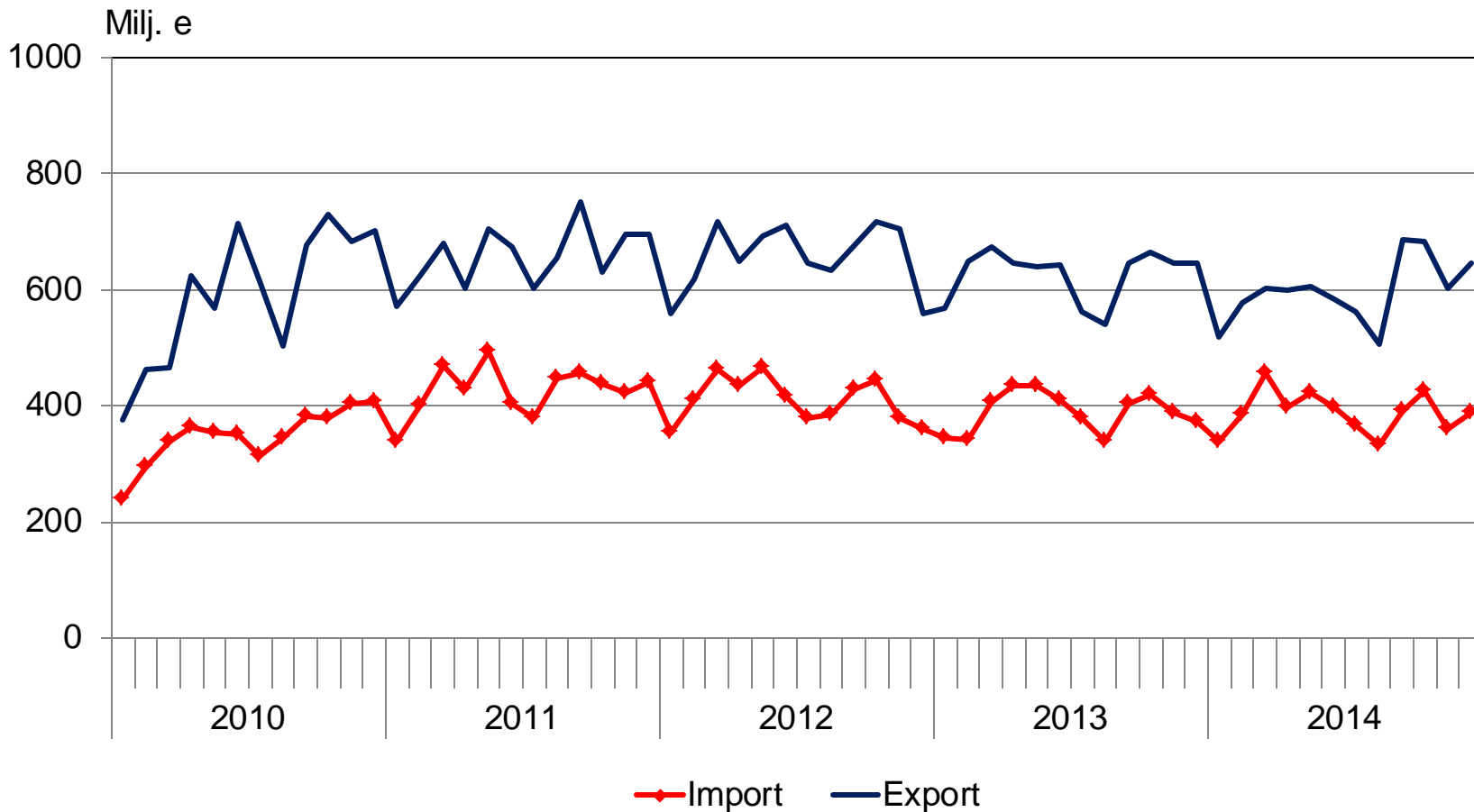


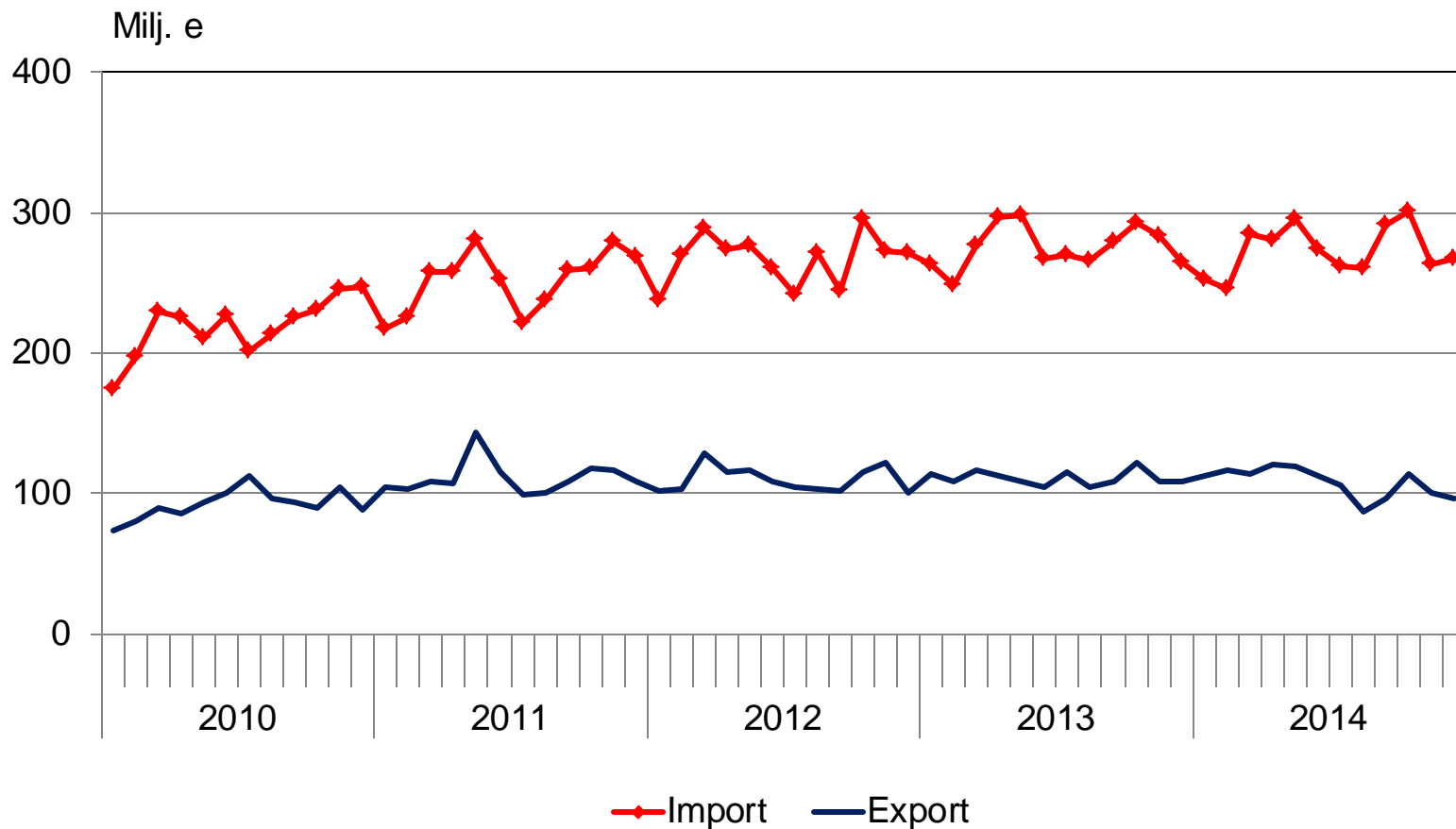


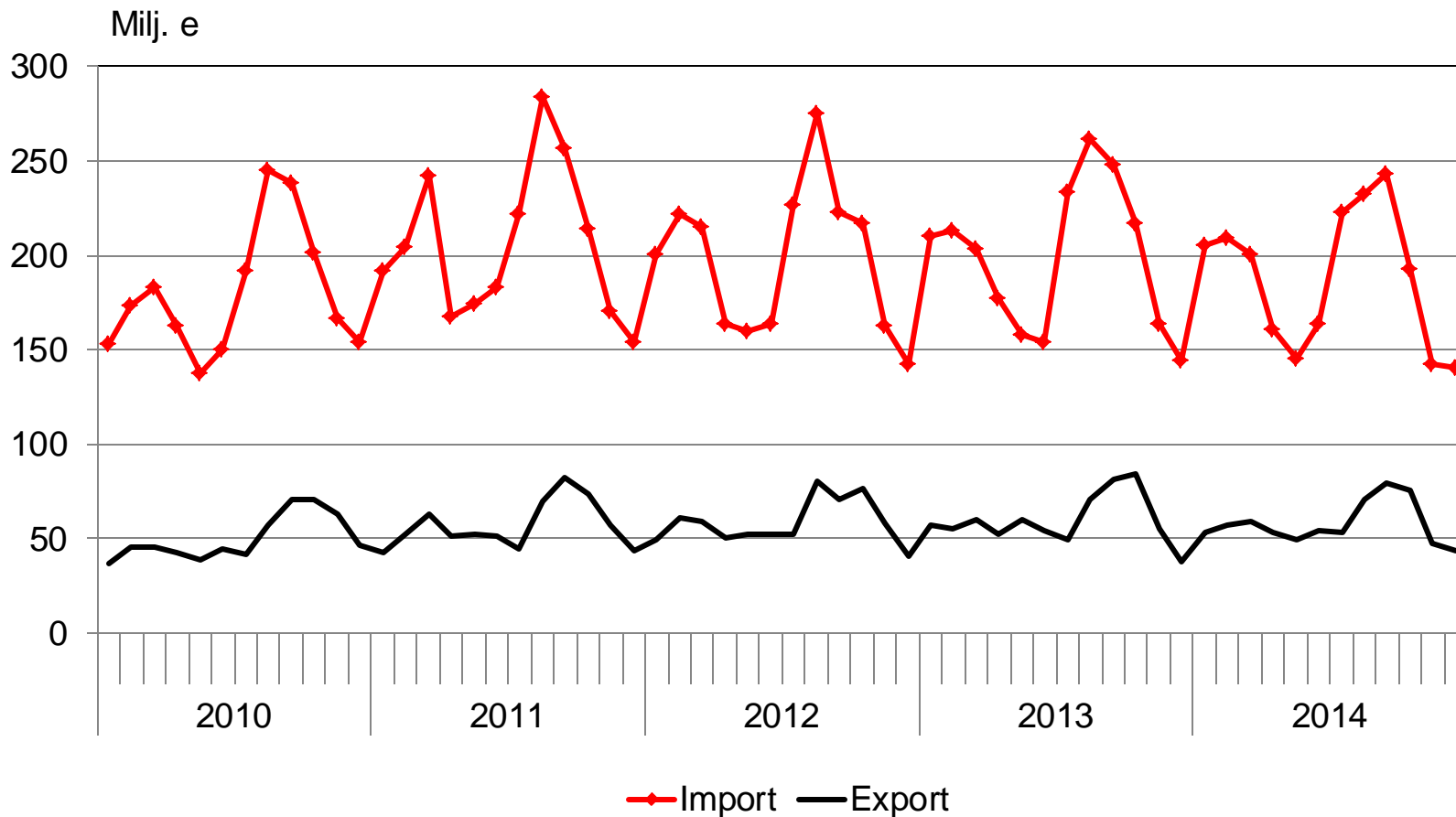


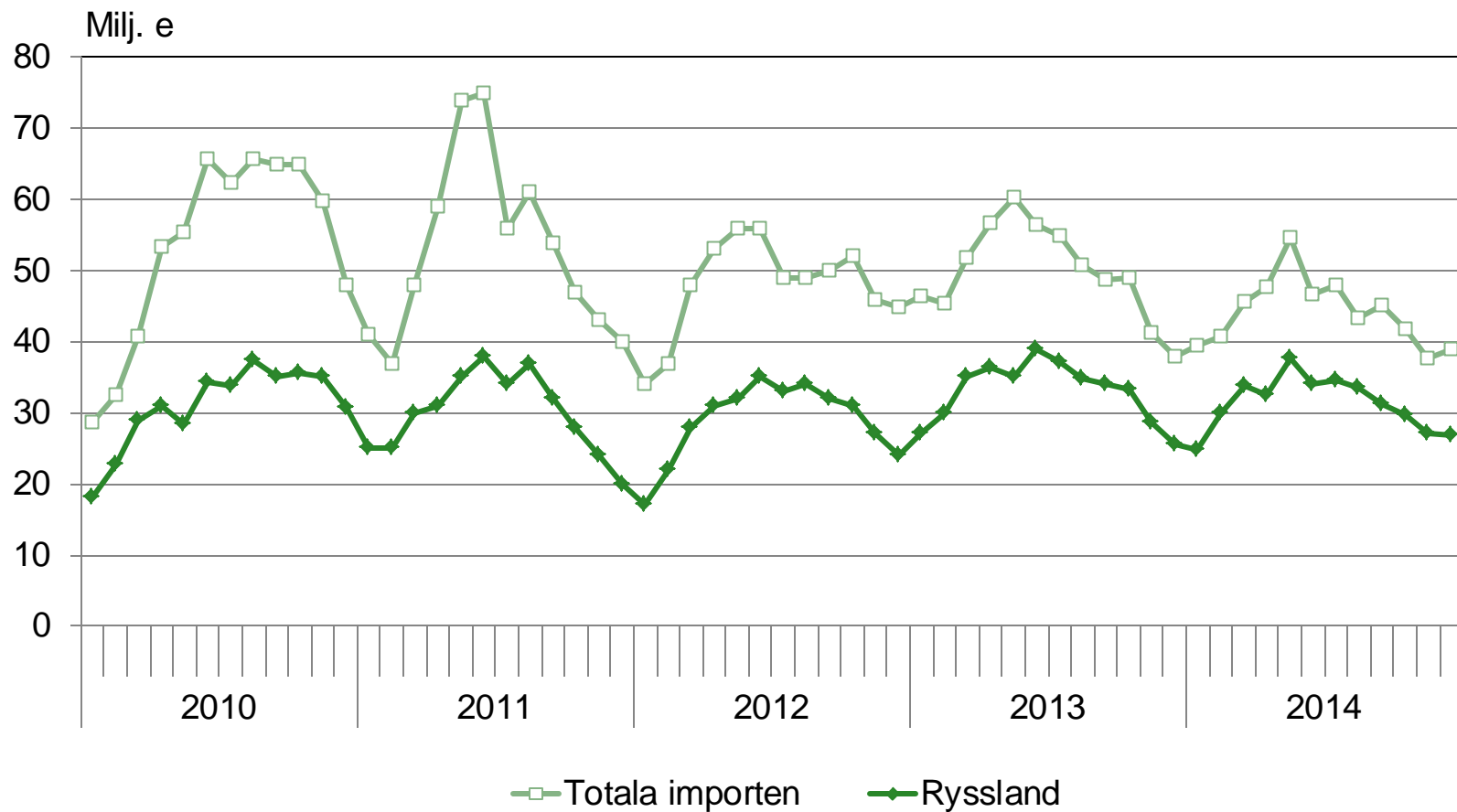
Importen och exporten av personbilar (stycke)

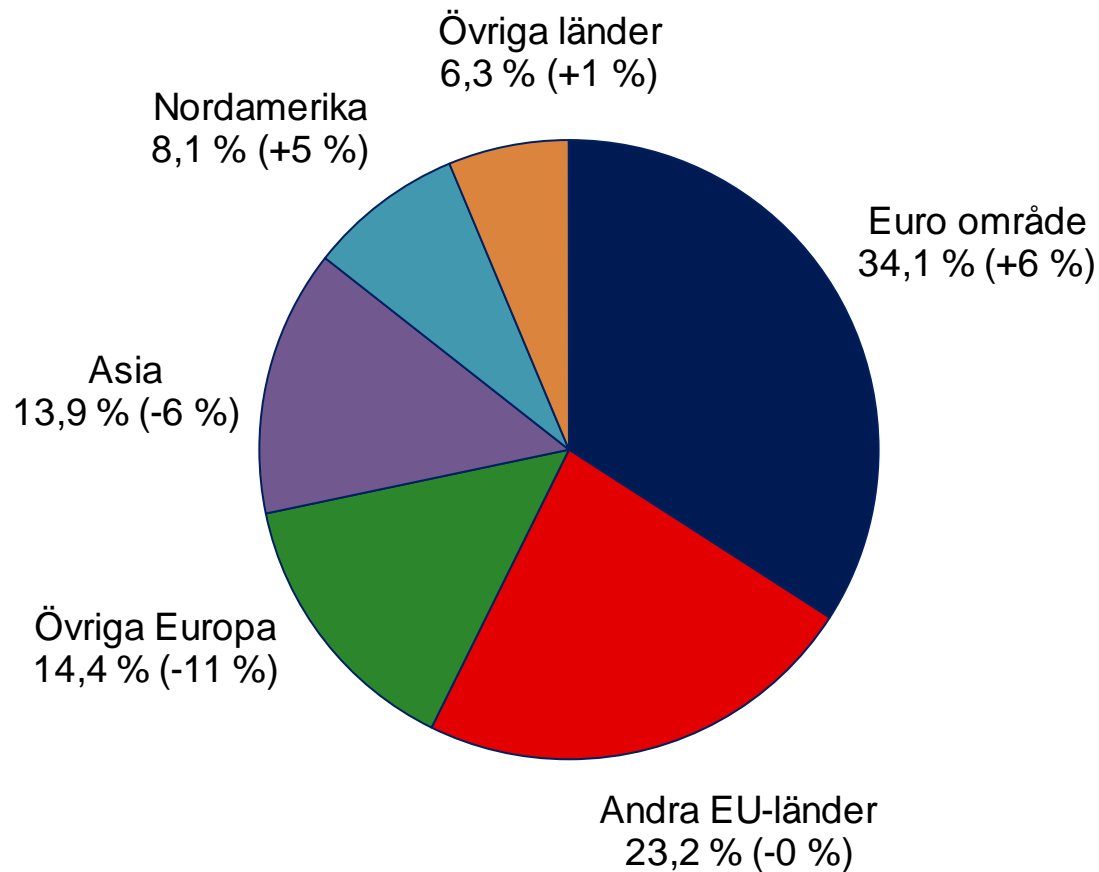
	<u>import</u>	<u>export</u>
2009	108 411	35 422
2010	135 537	14 764
2011	149 316	12 133
2012	118 978	9 157
2013	120 790	16 311
2014	120 045	54 162

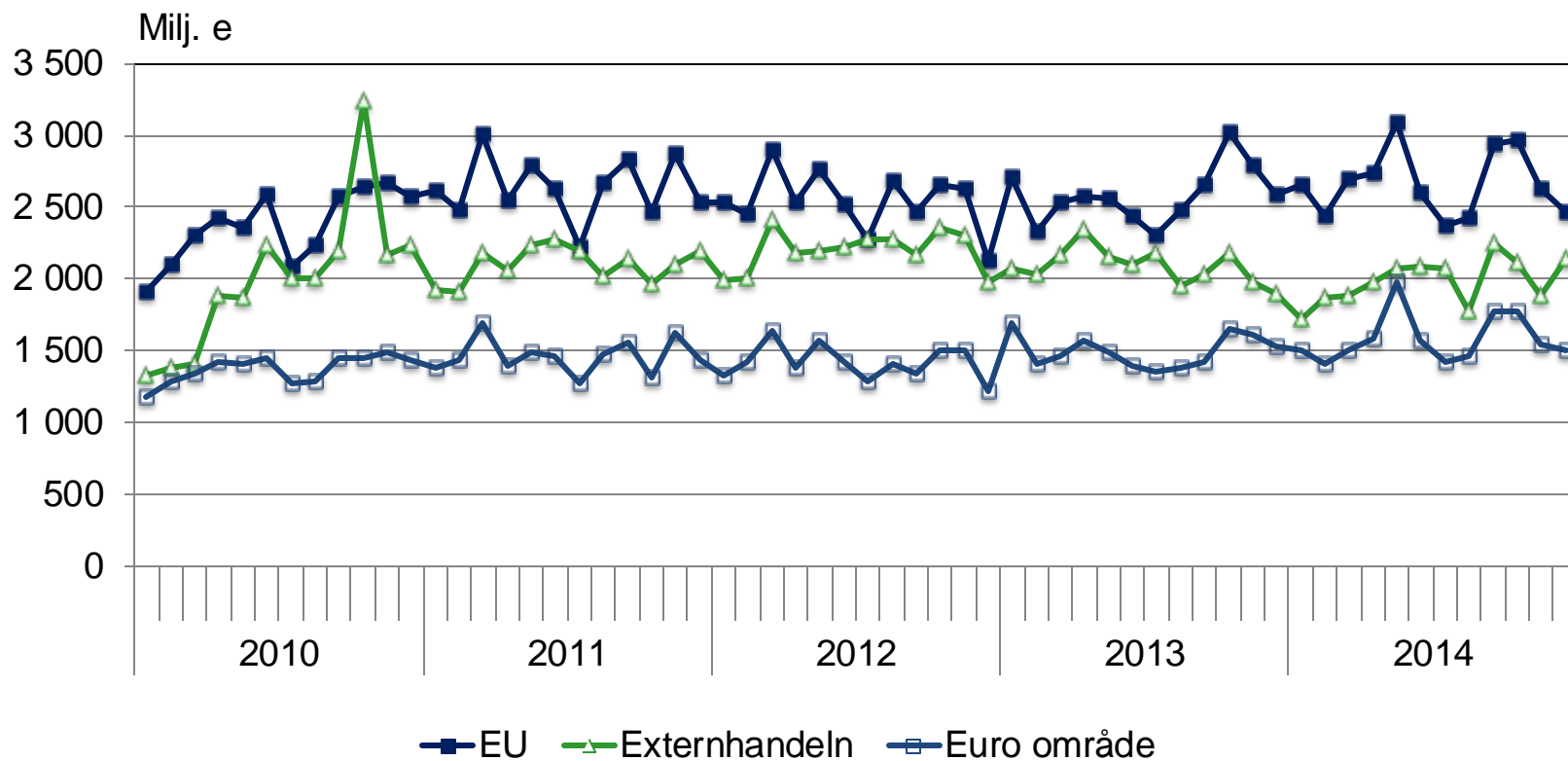


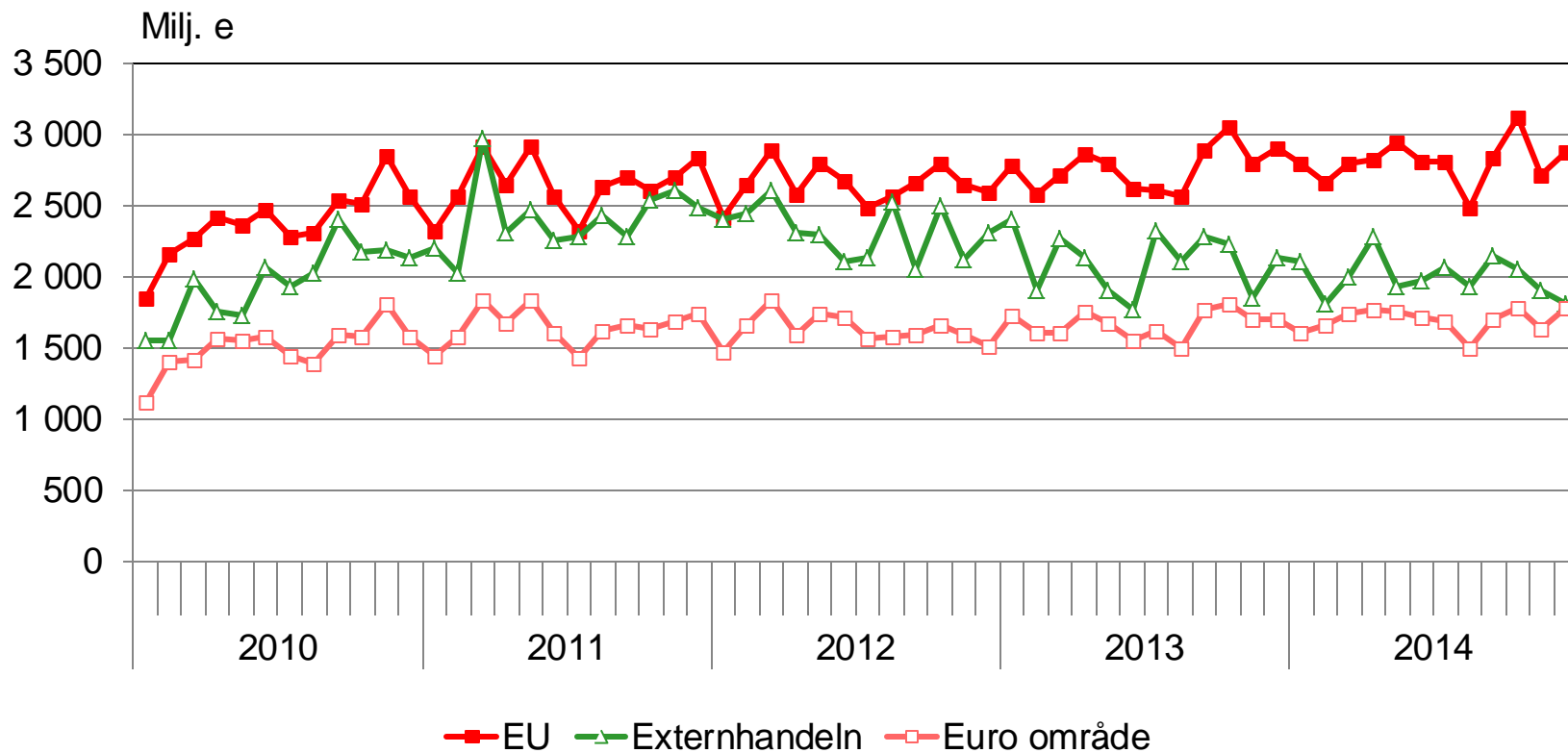


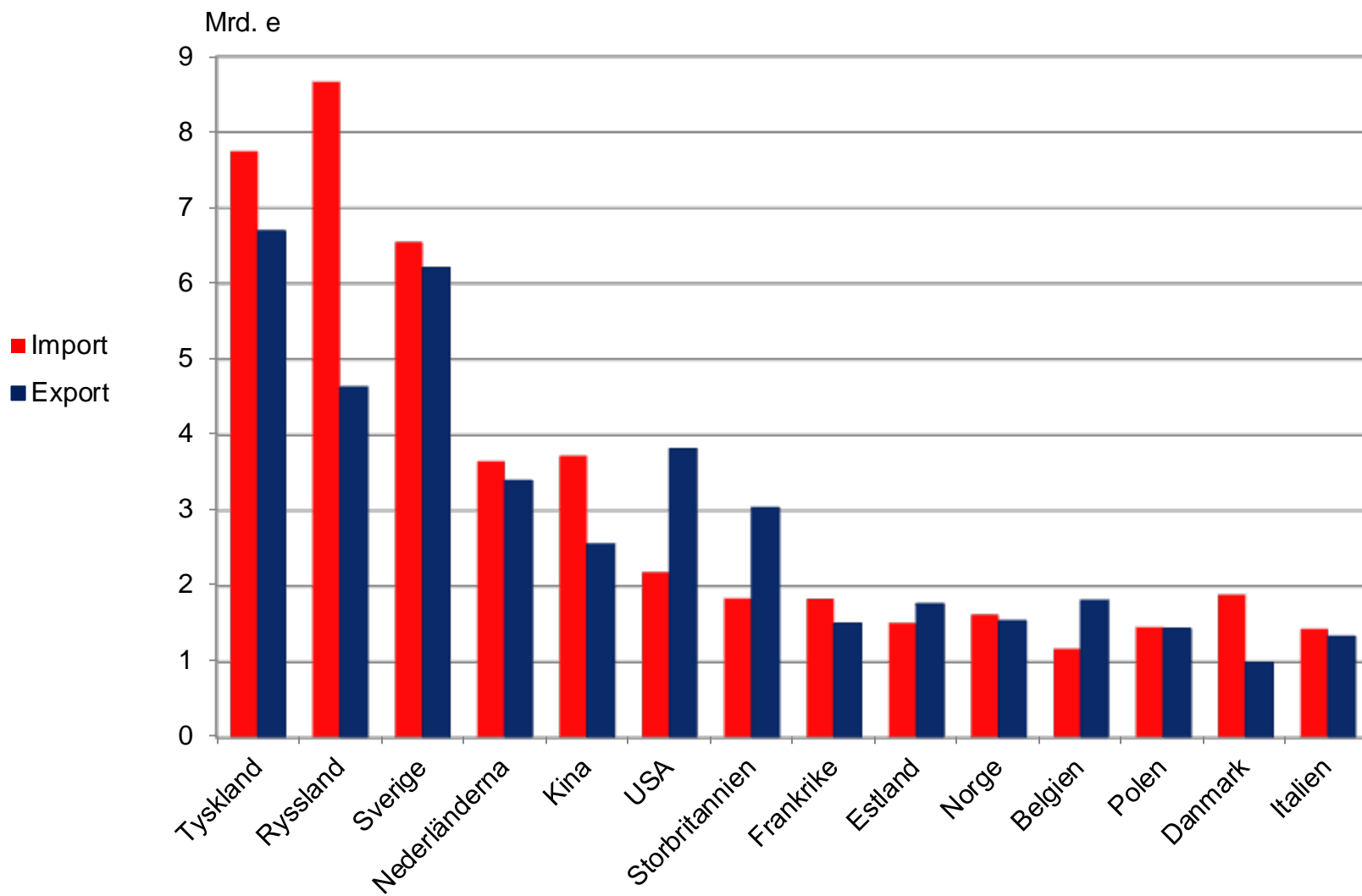






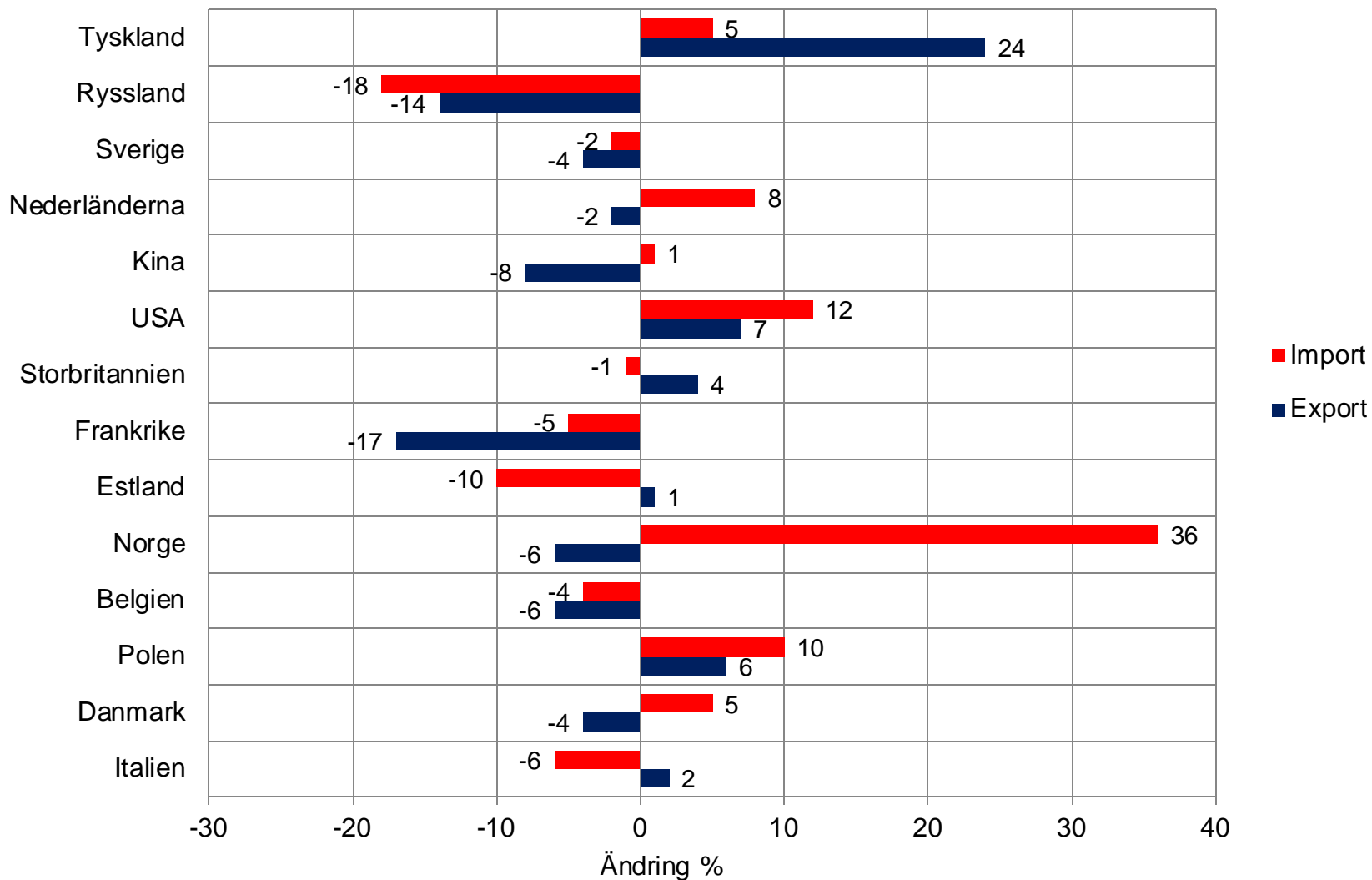


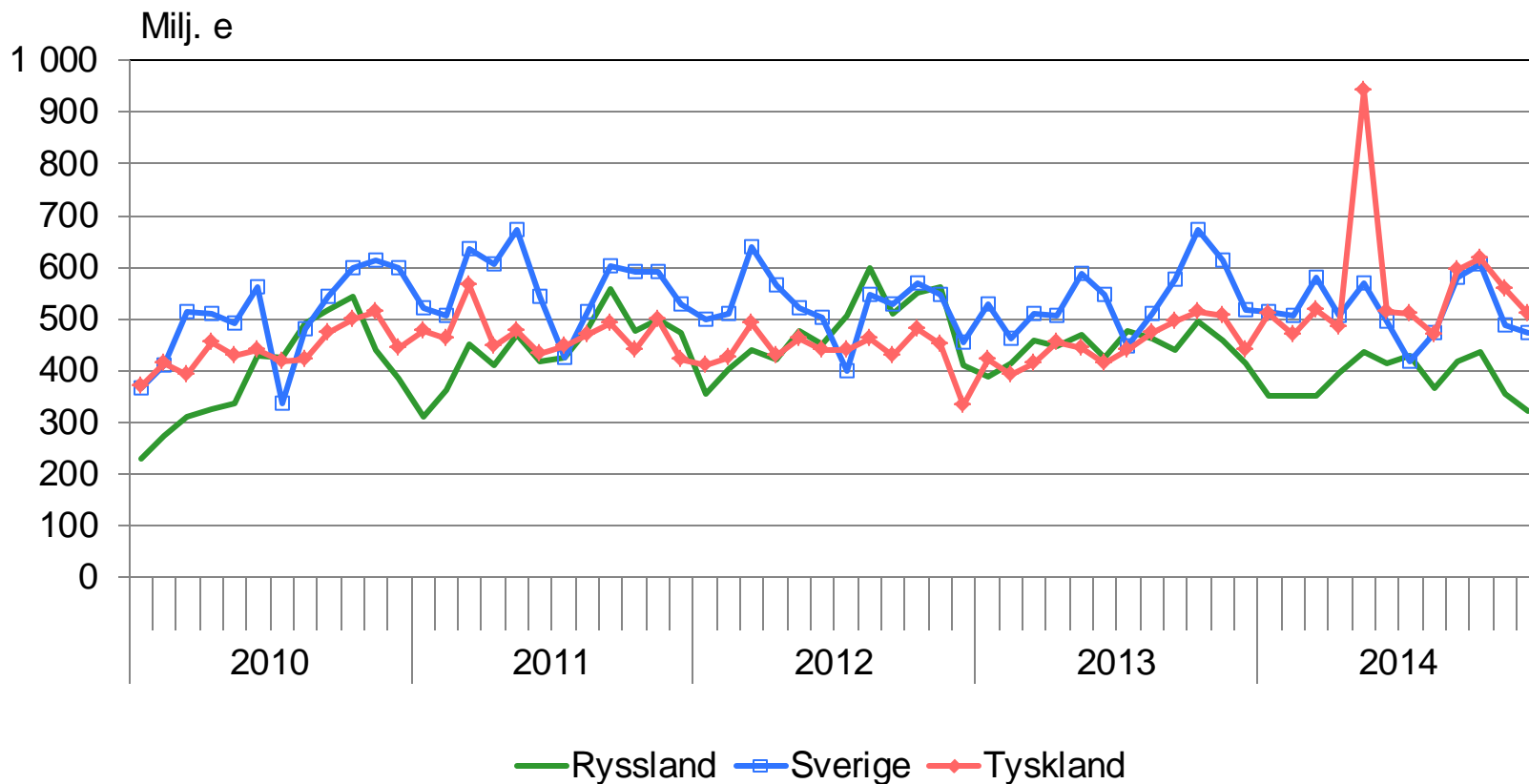


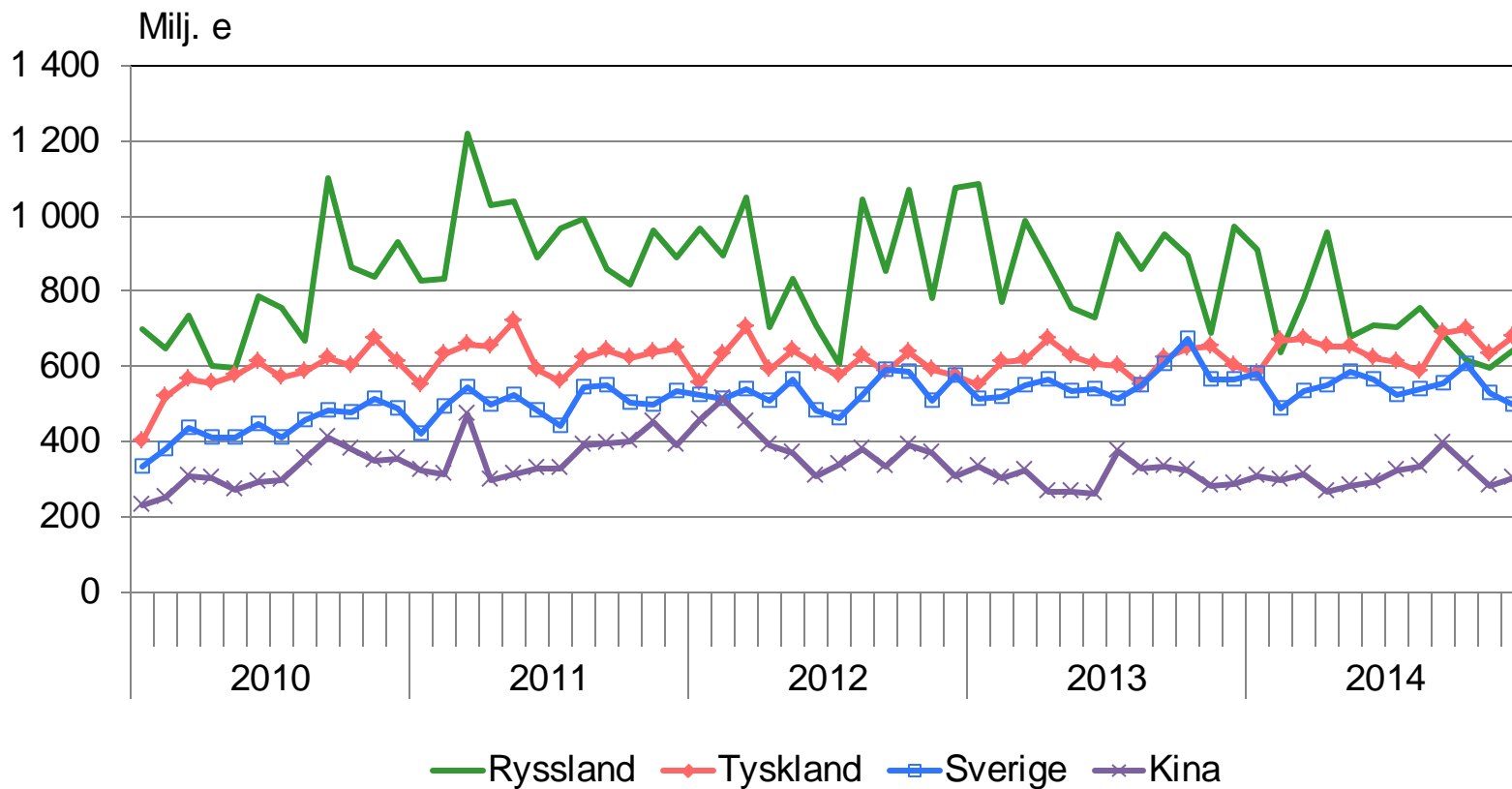


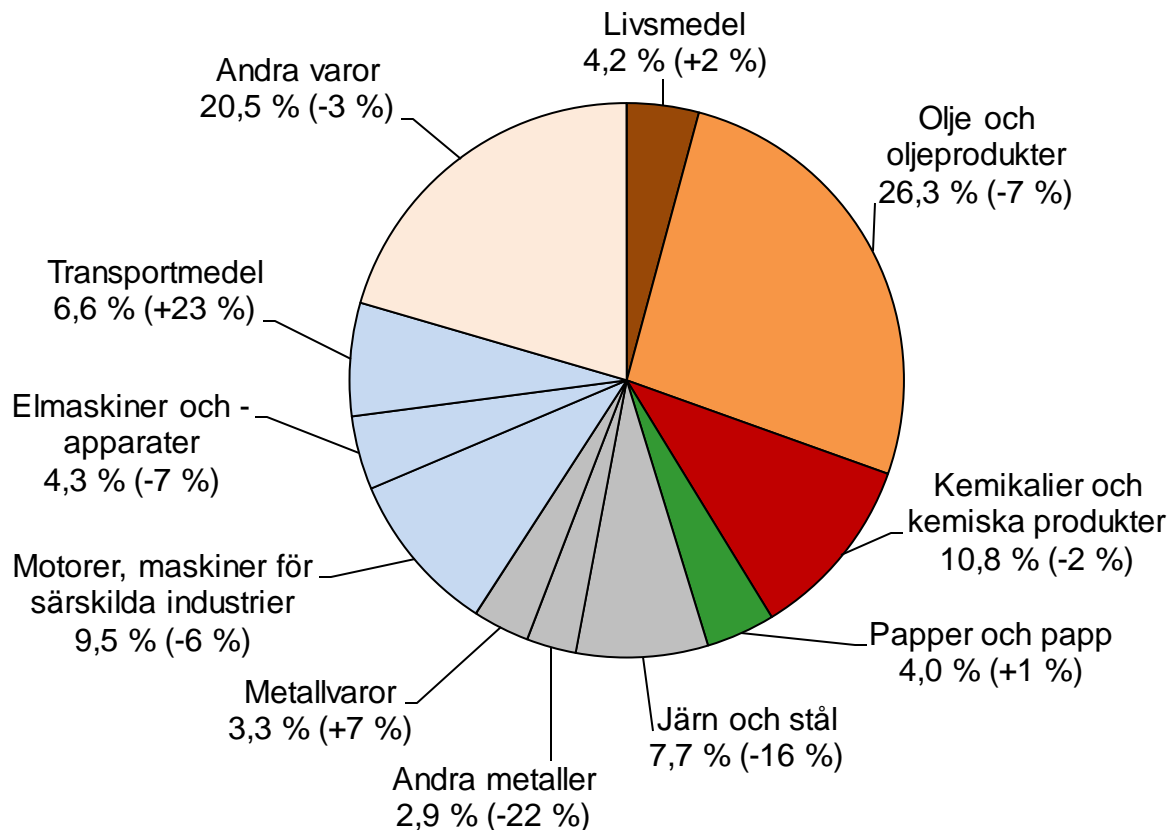


FÖRÄNDRING AV EXPORT OCH IMPORT MED STORA HANDELSPARTNER 2014; Förändring jämfört med föregående årets motsvarande tidsperiod (%)

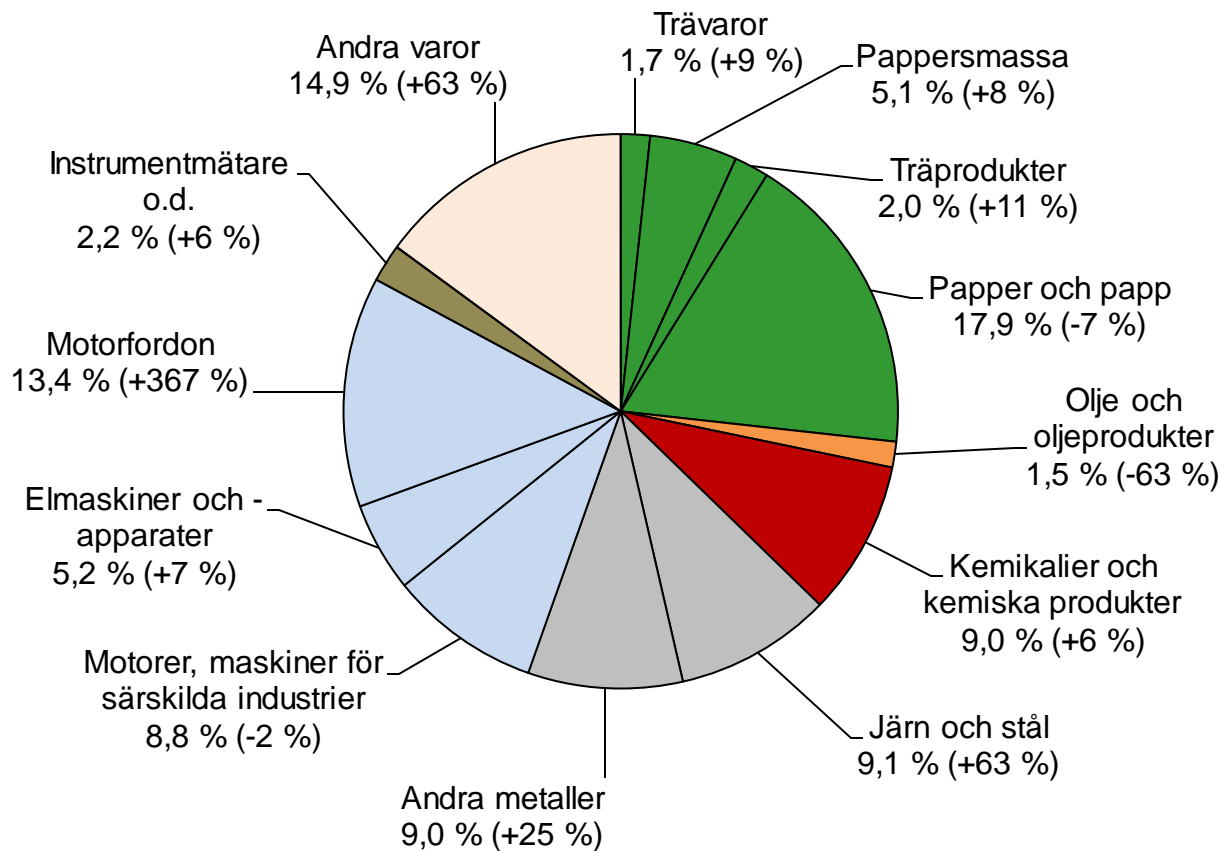




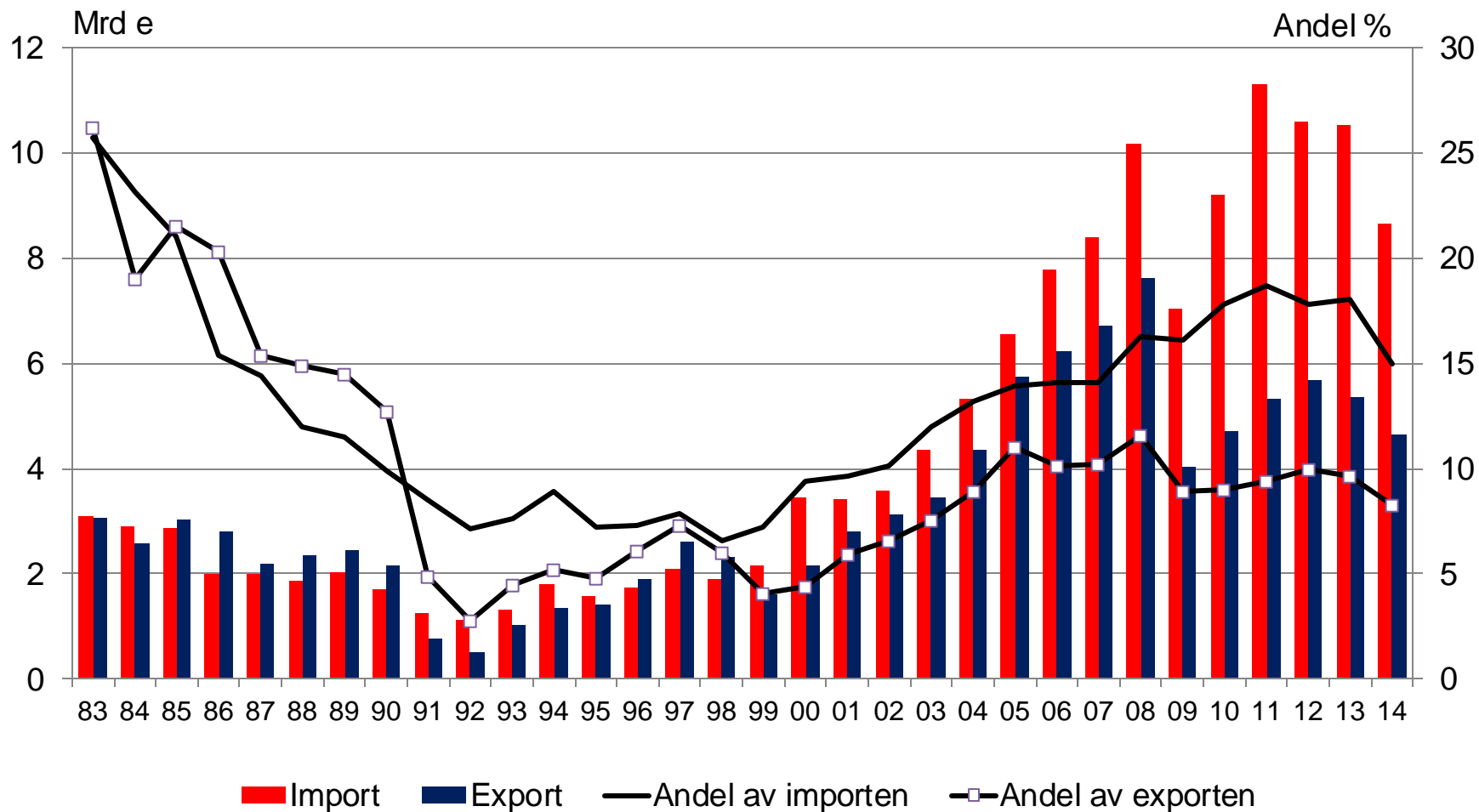


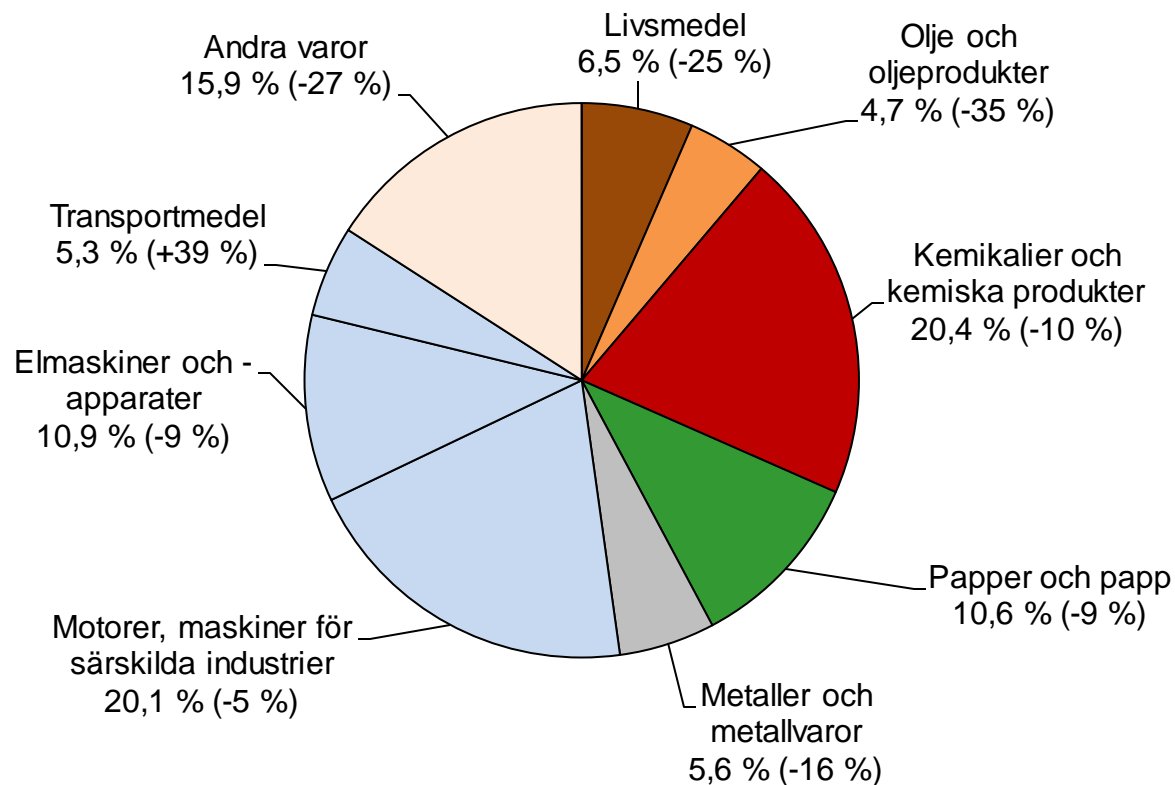


Totala exporten till Sverige år 2014 var 6,2 mrd. euro (-4 %)

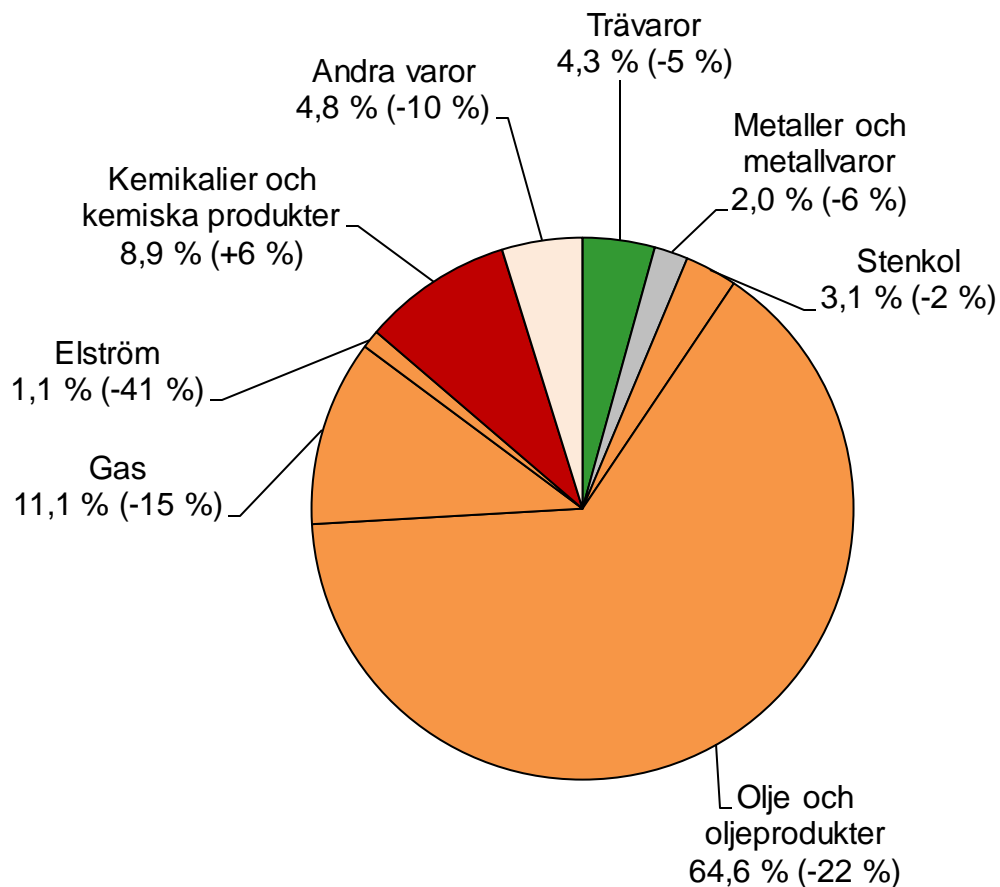


Totala exporten till Tyskland år 2014 var 6,7 mrd. euro (+24 %)

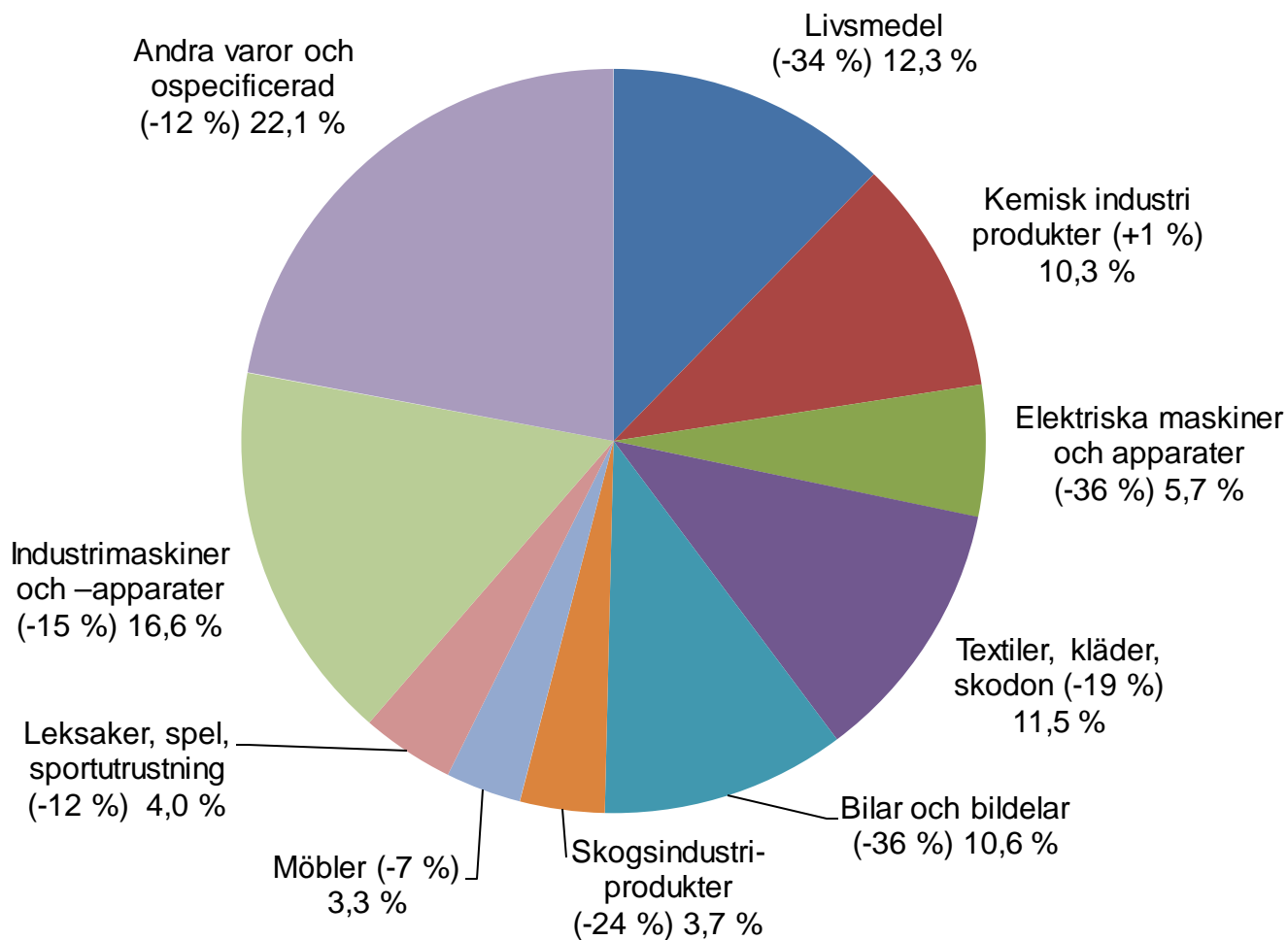


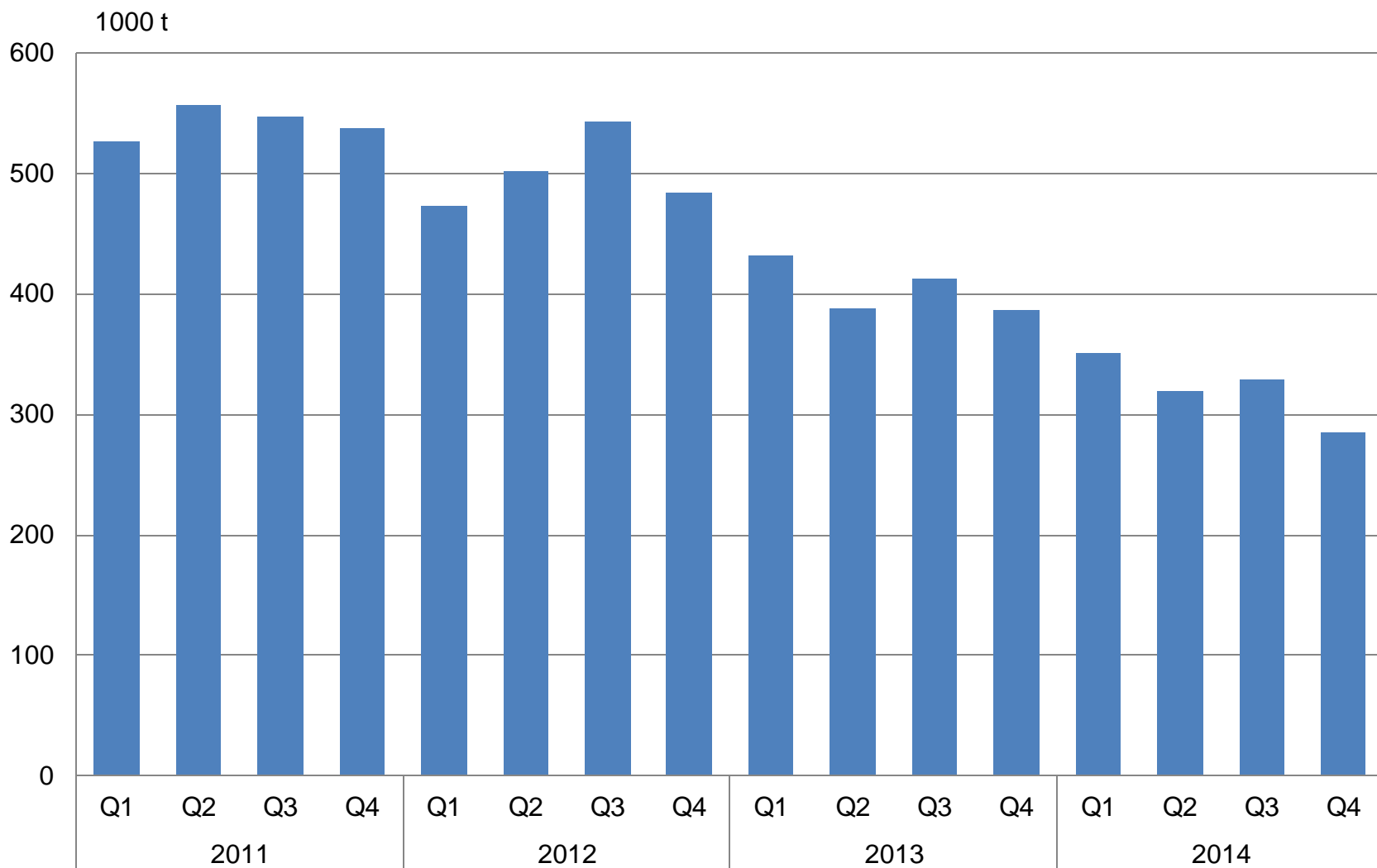


Totala exporten till Ryssland år 2014 var 4,6 mrd. euro (-14 %)



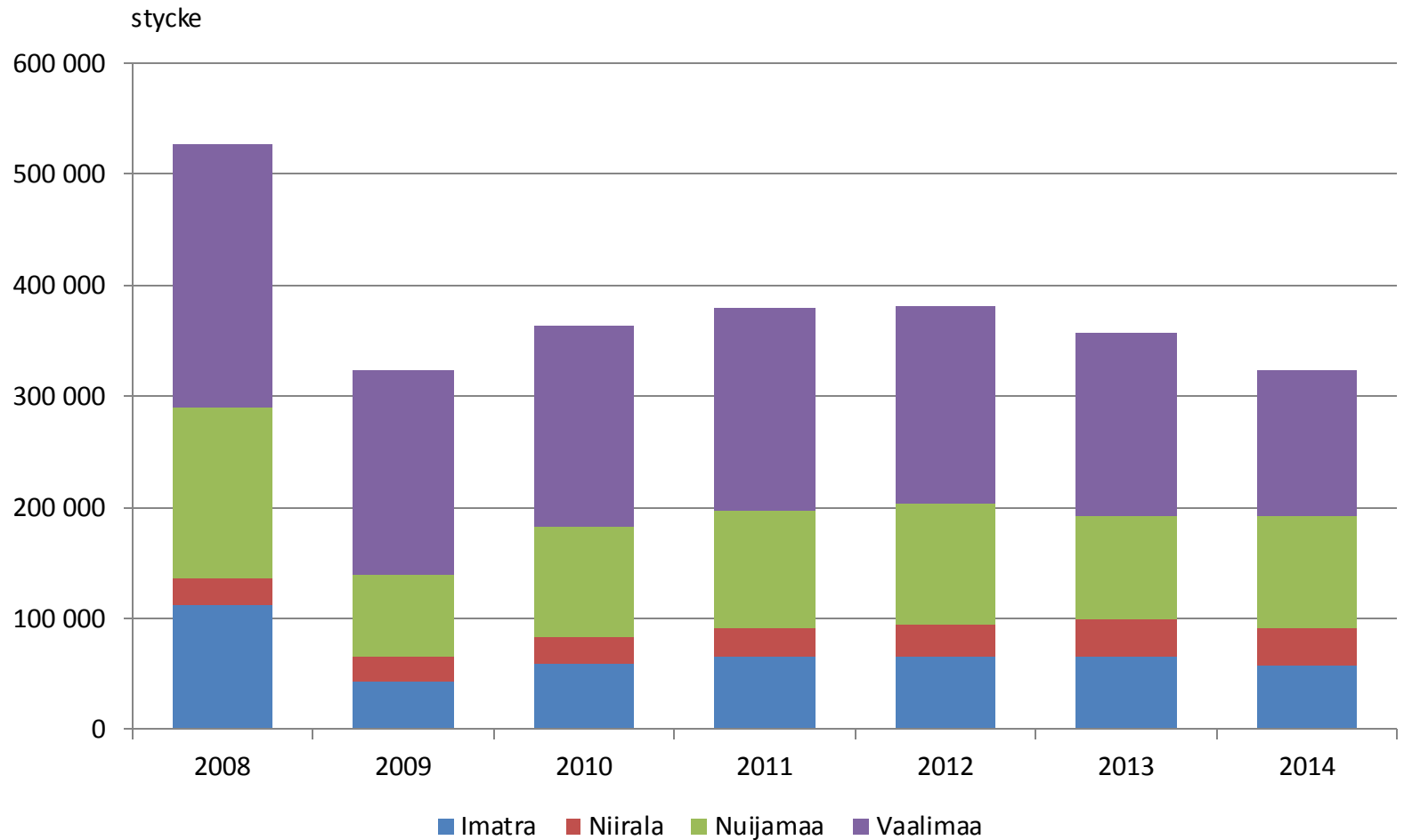
Totala importen från Ryssland år 2014 var 8,7 mrd. euro (-18 %).
Energiprodukters andel av hela importen från Ryssland var 79,9 %.

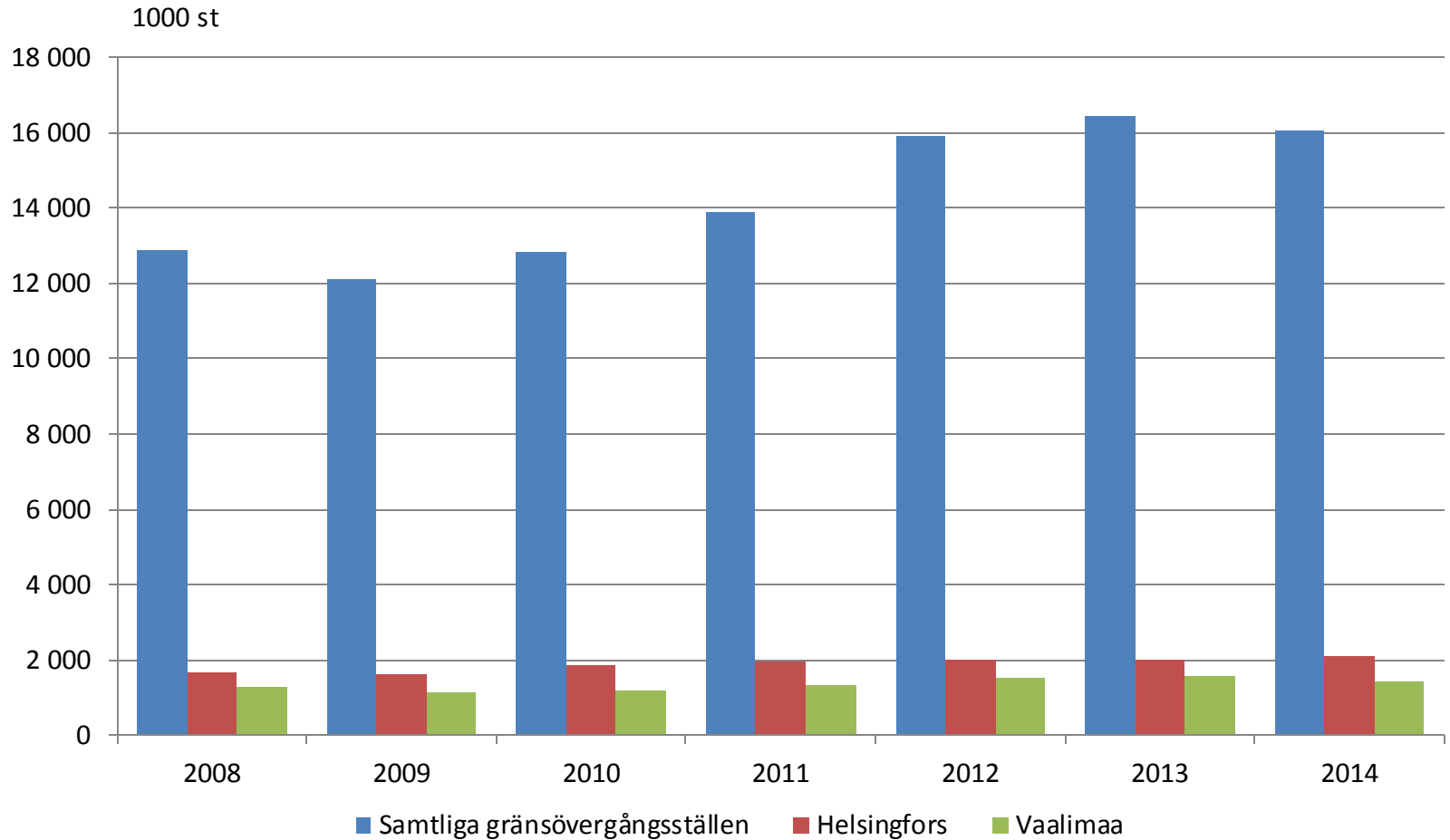






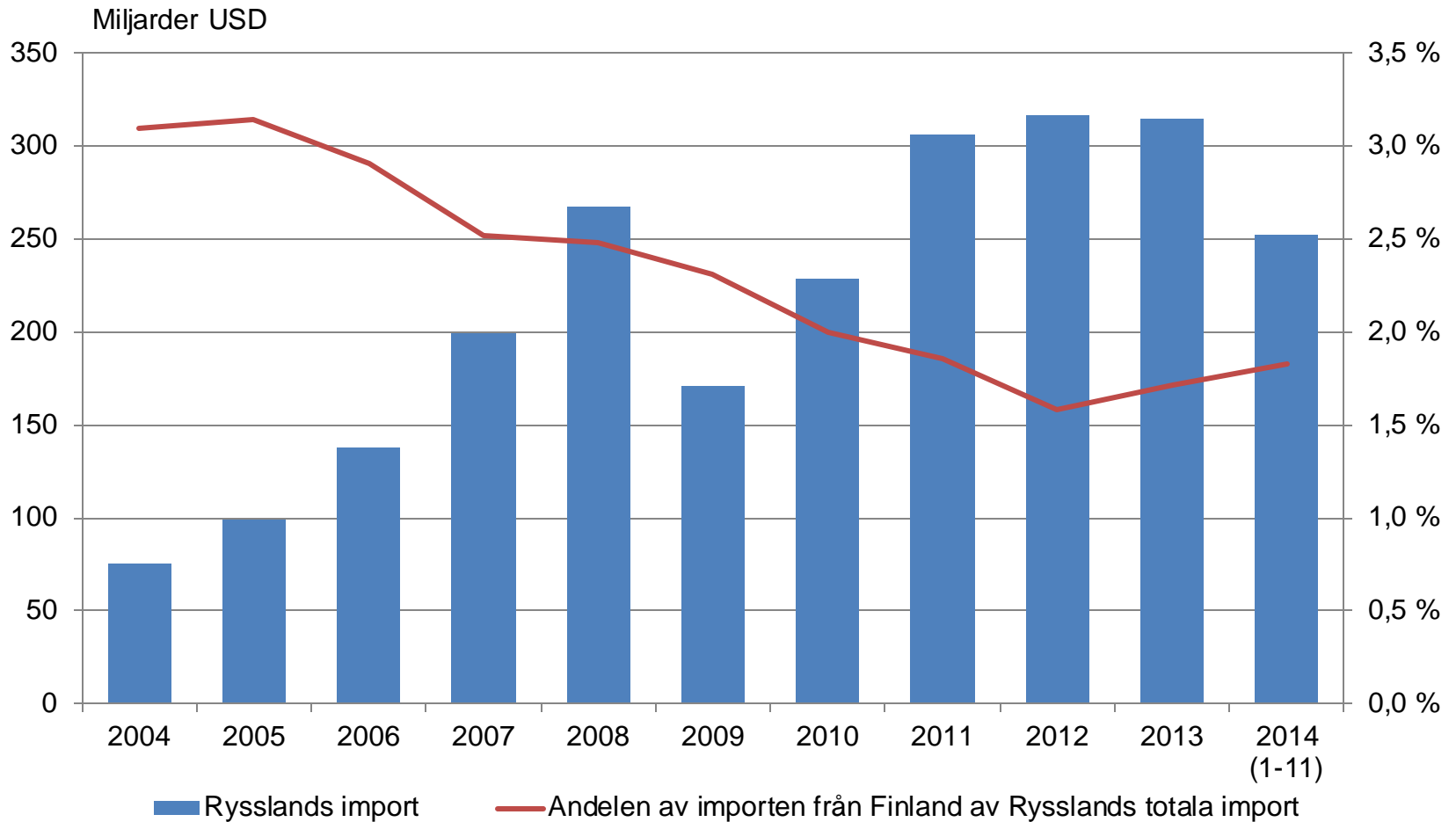
Lastbilar med last per år 2008-2014 (stykke)







ANDELEN AV FINLÄNDS EXPORT TILL RYSSLAND AV DET TOTALA VÄRDET PÅ RYSSLANDS IMPORT 2004-2014 (1-11)



- Källa: UN Comtrade