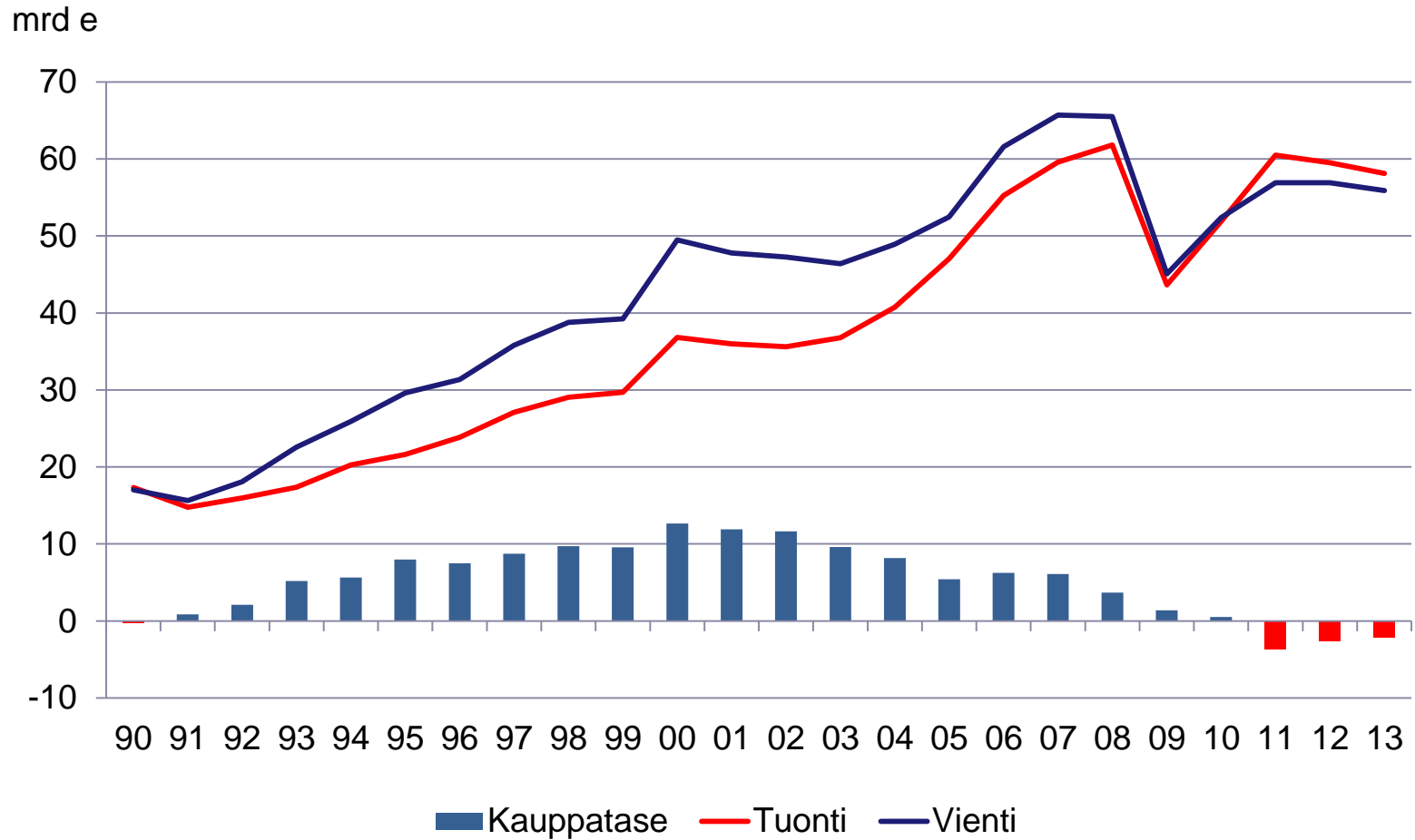
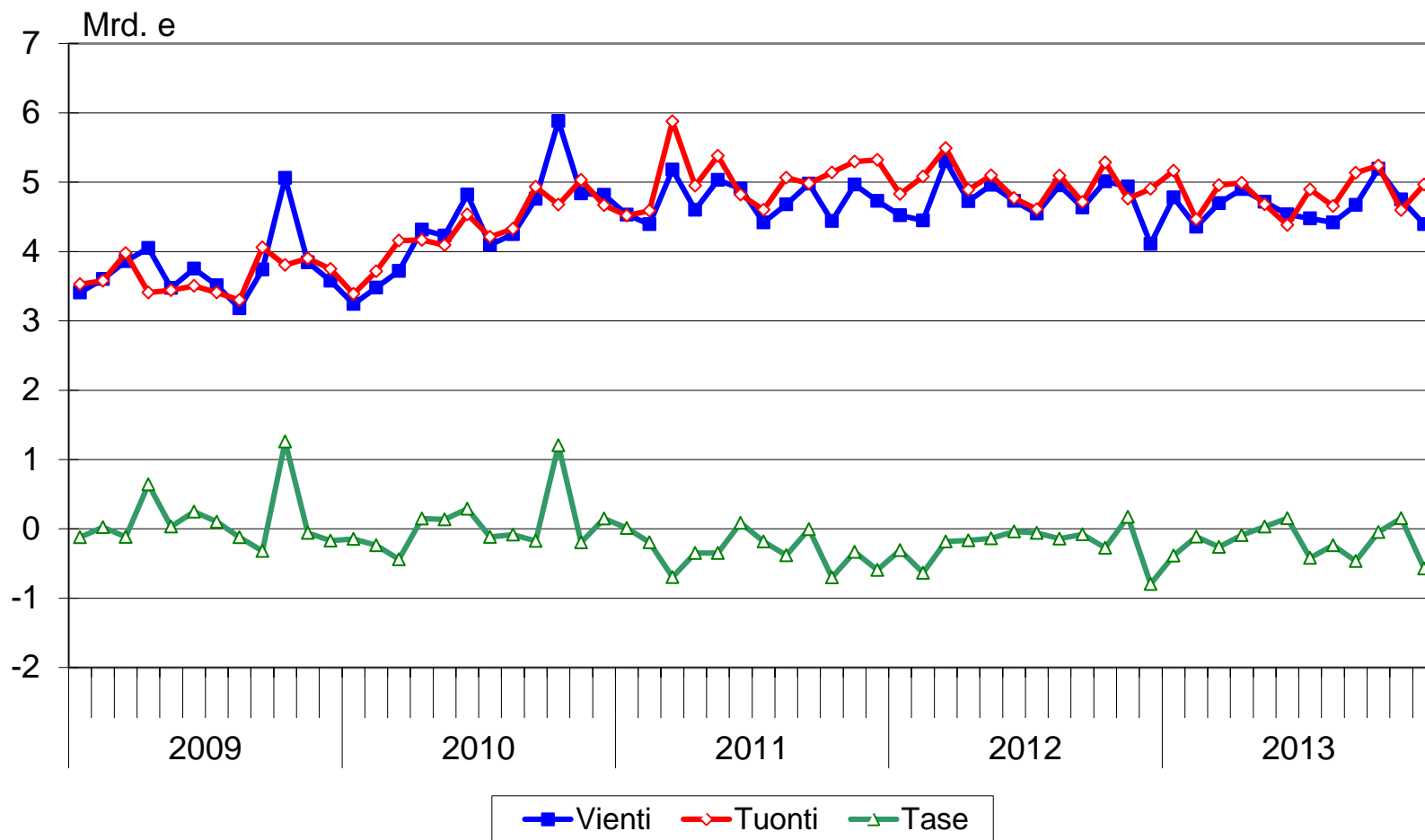
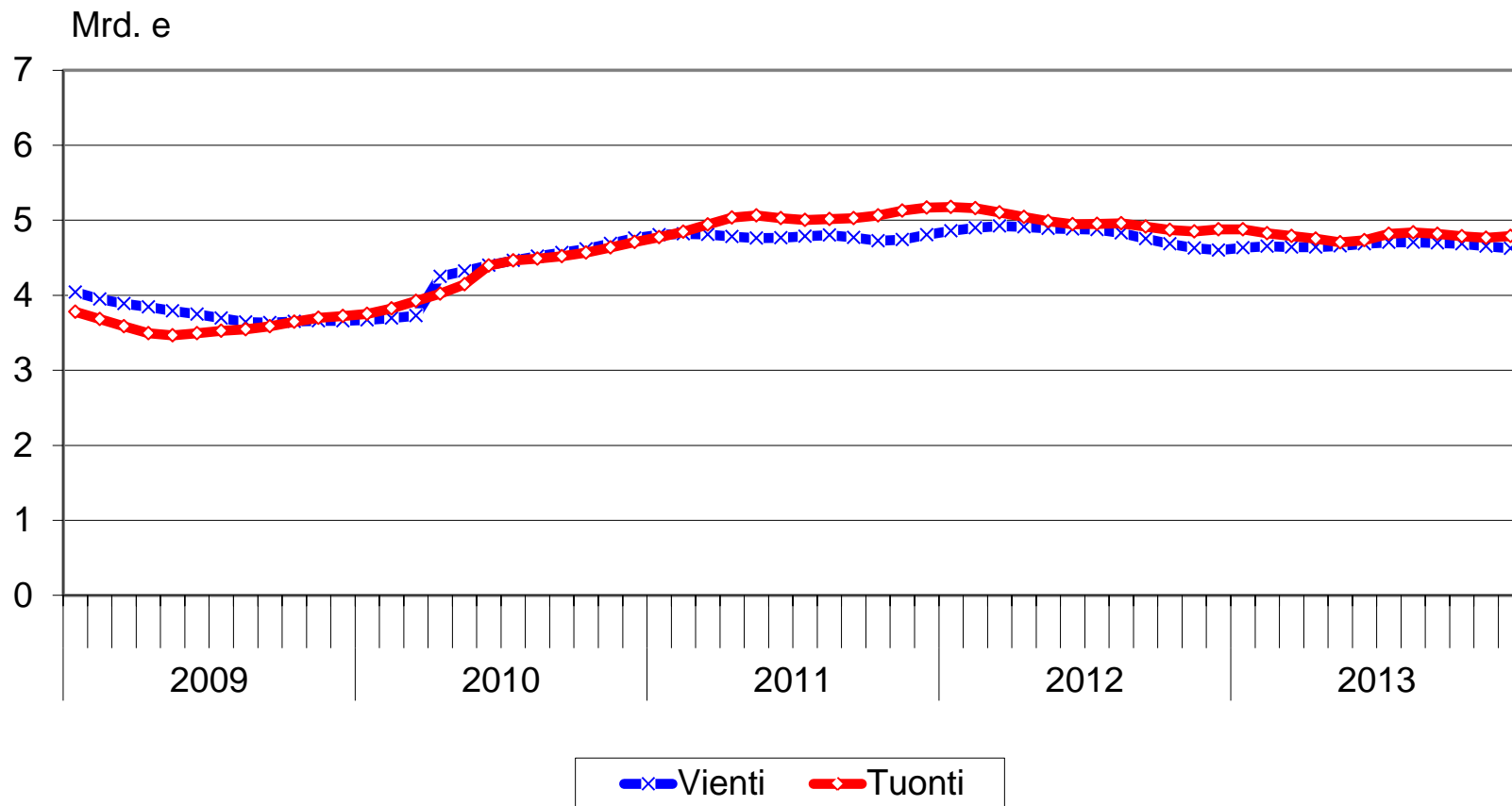


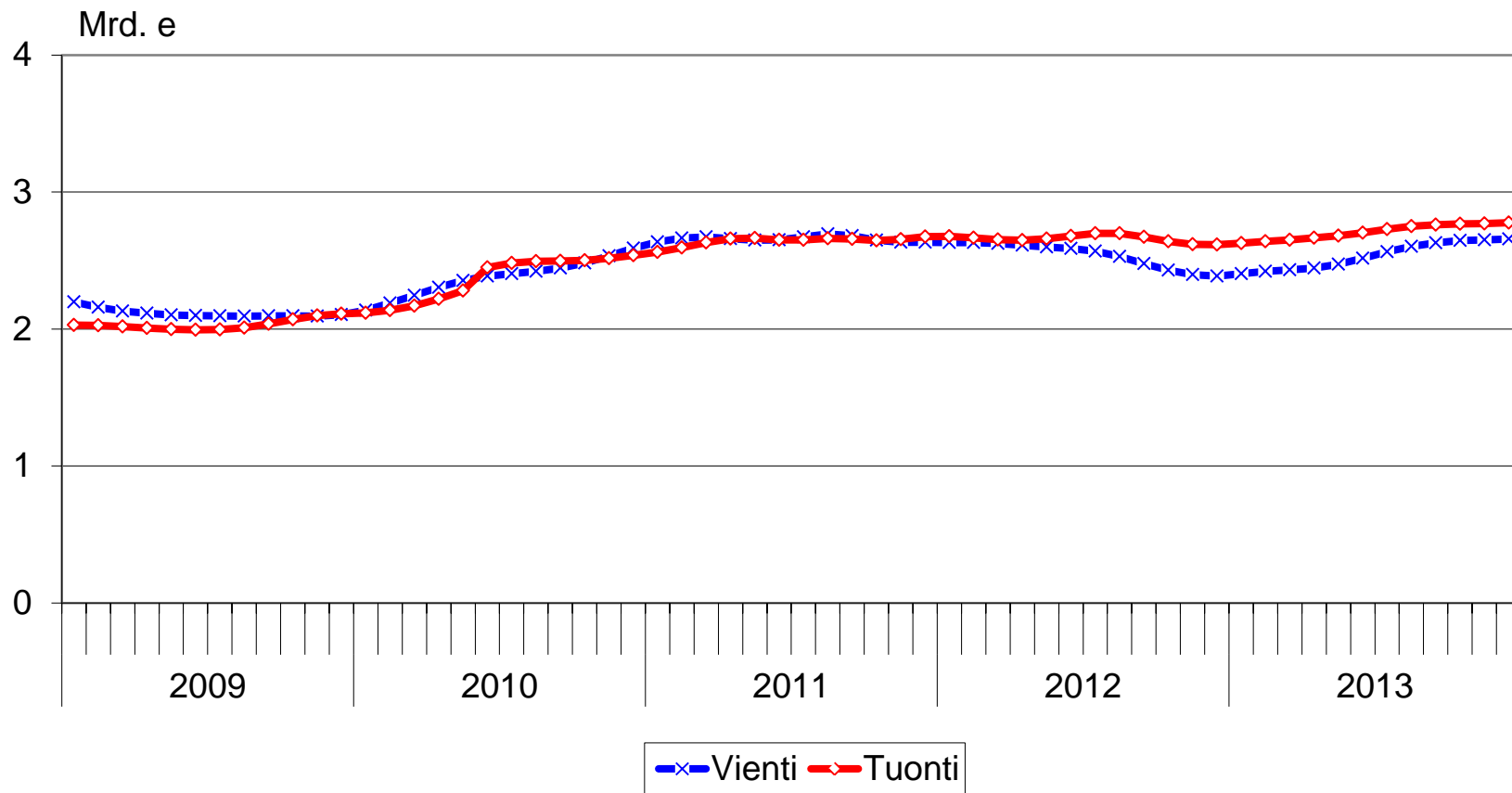


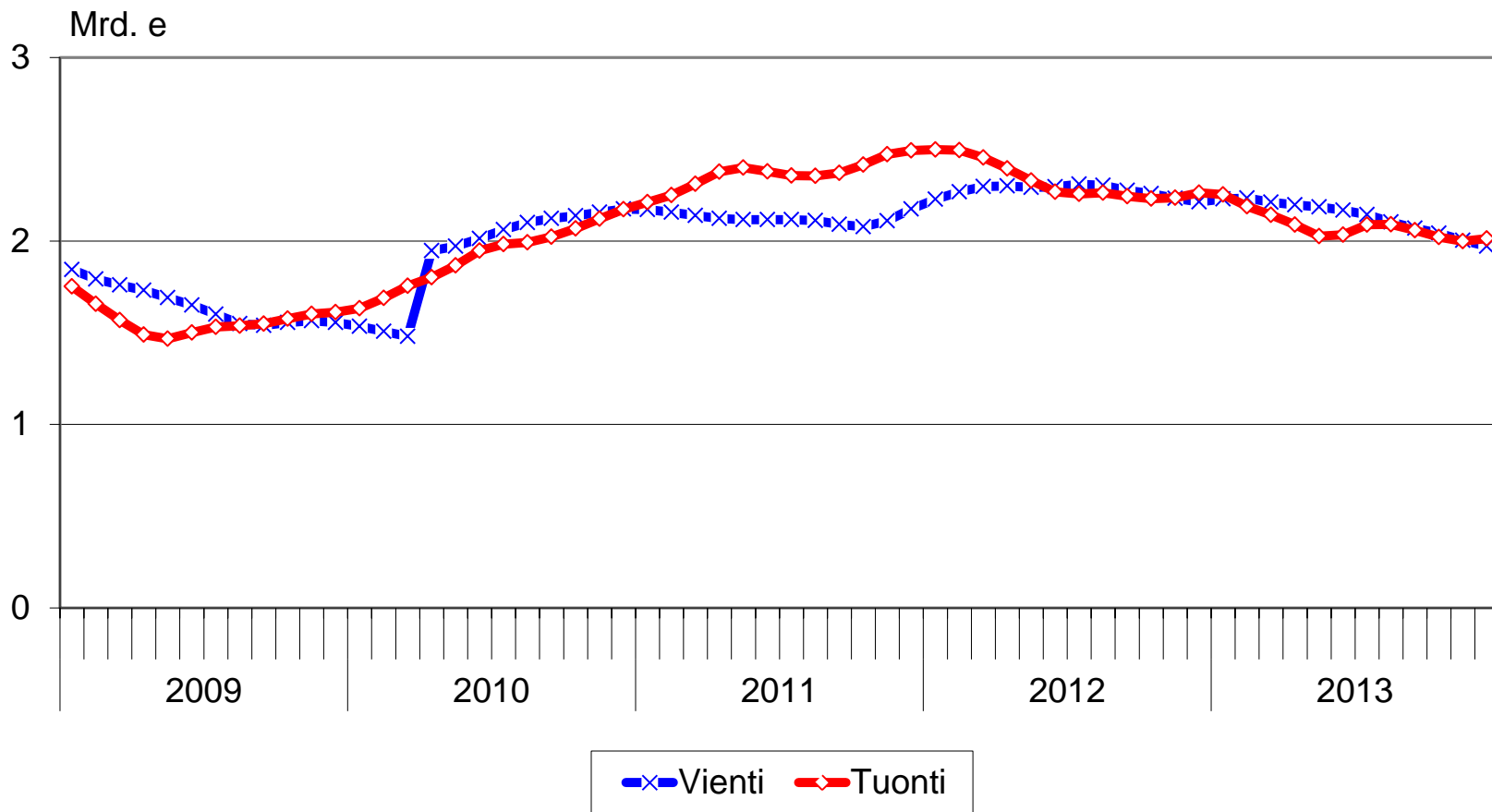
Kuvioita Suomen ulkomaankaupasta 2013

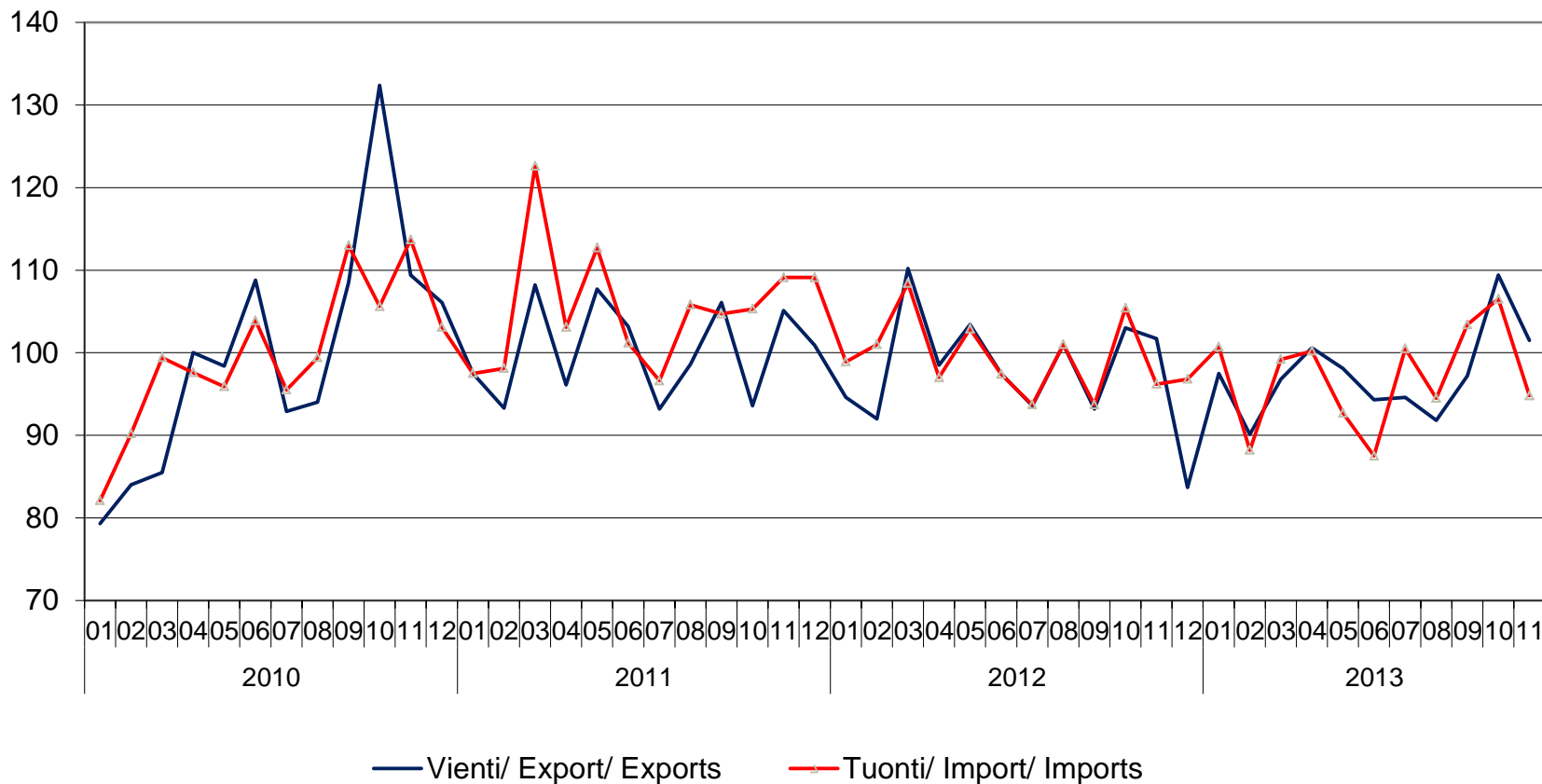


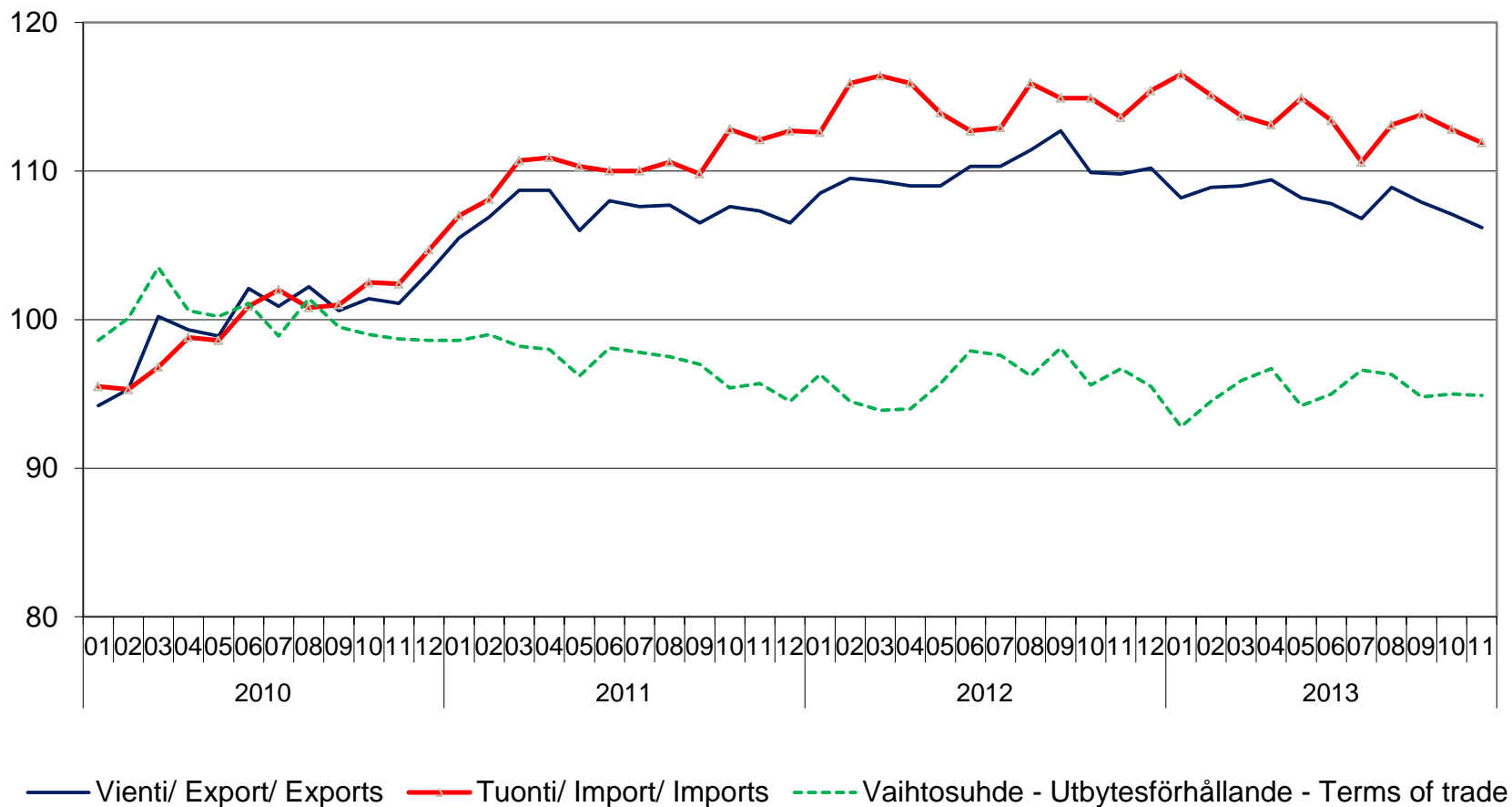


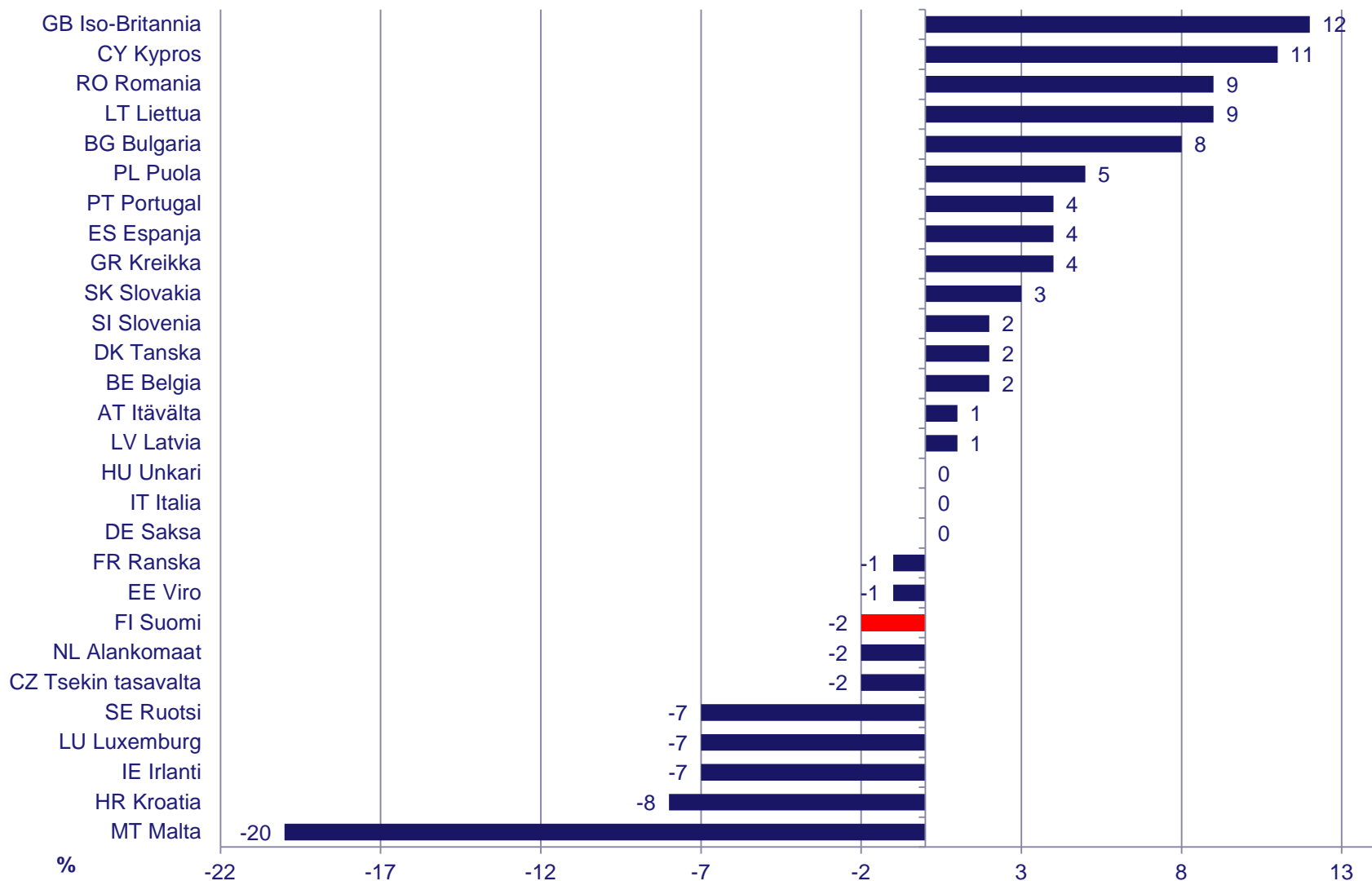


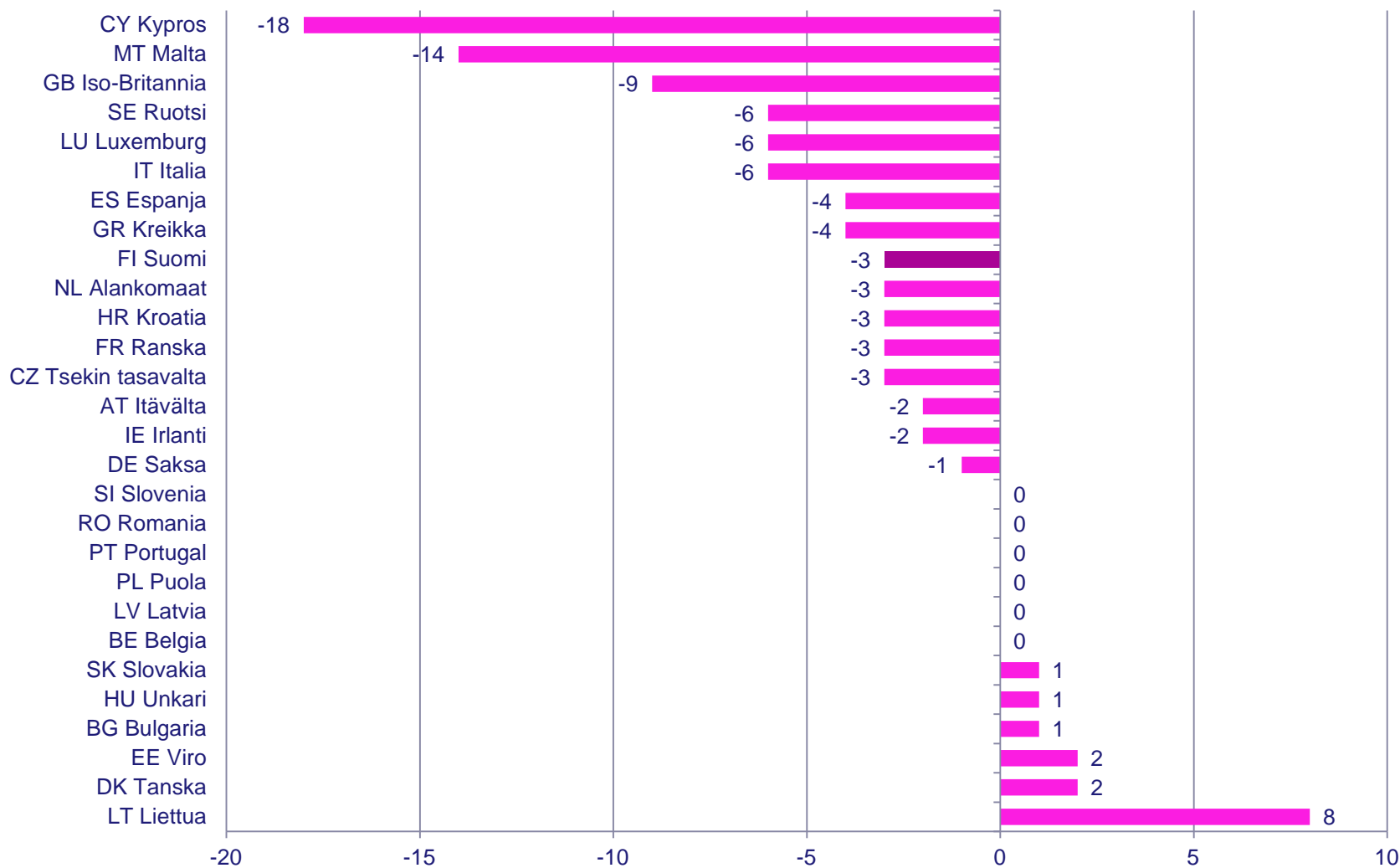


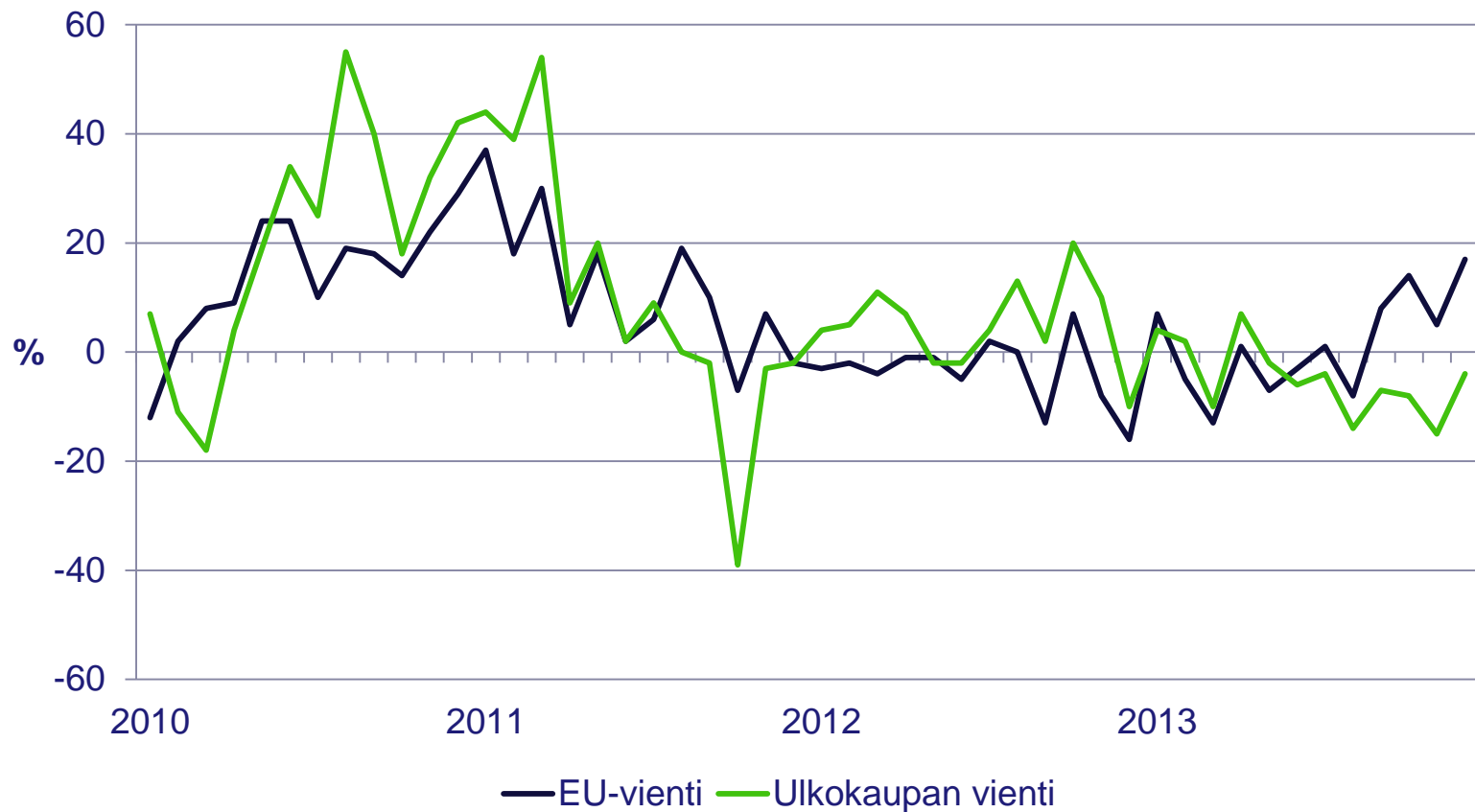


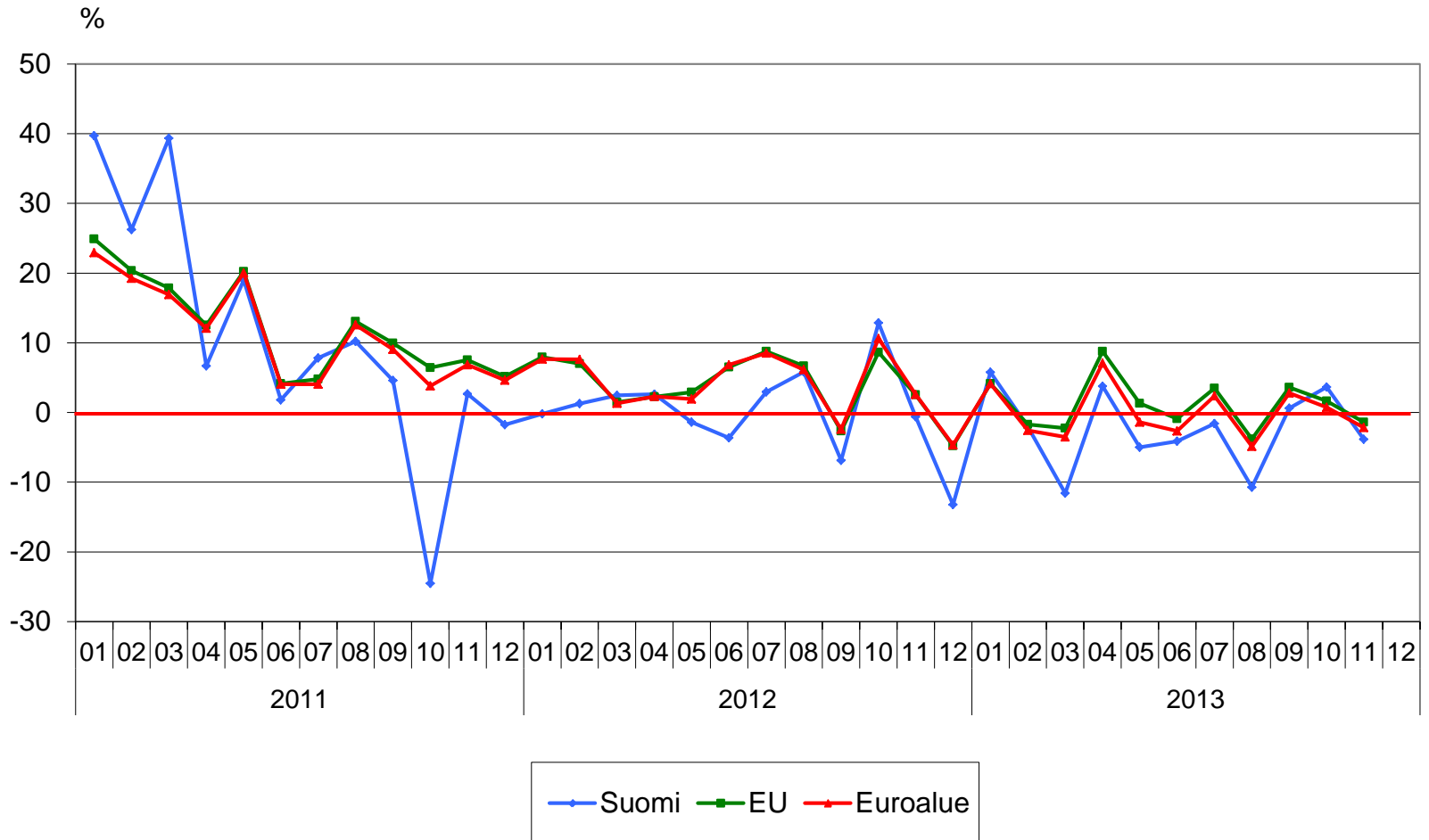


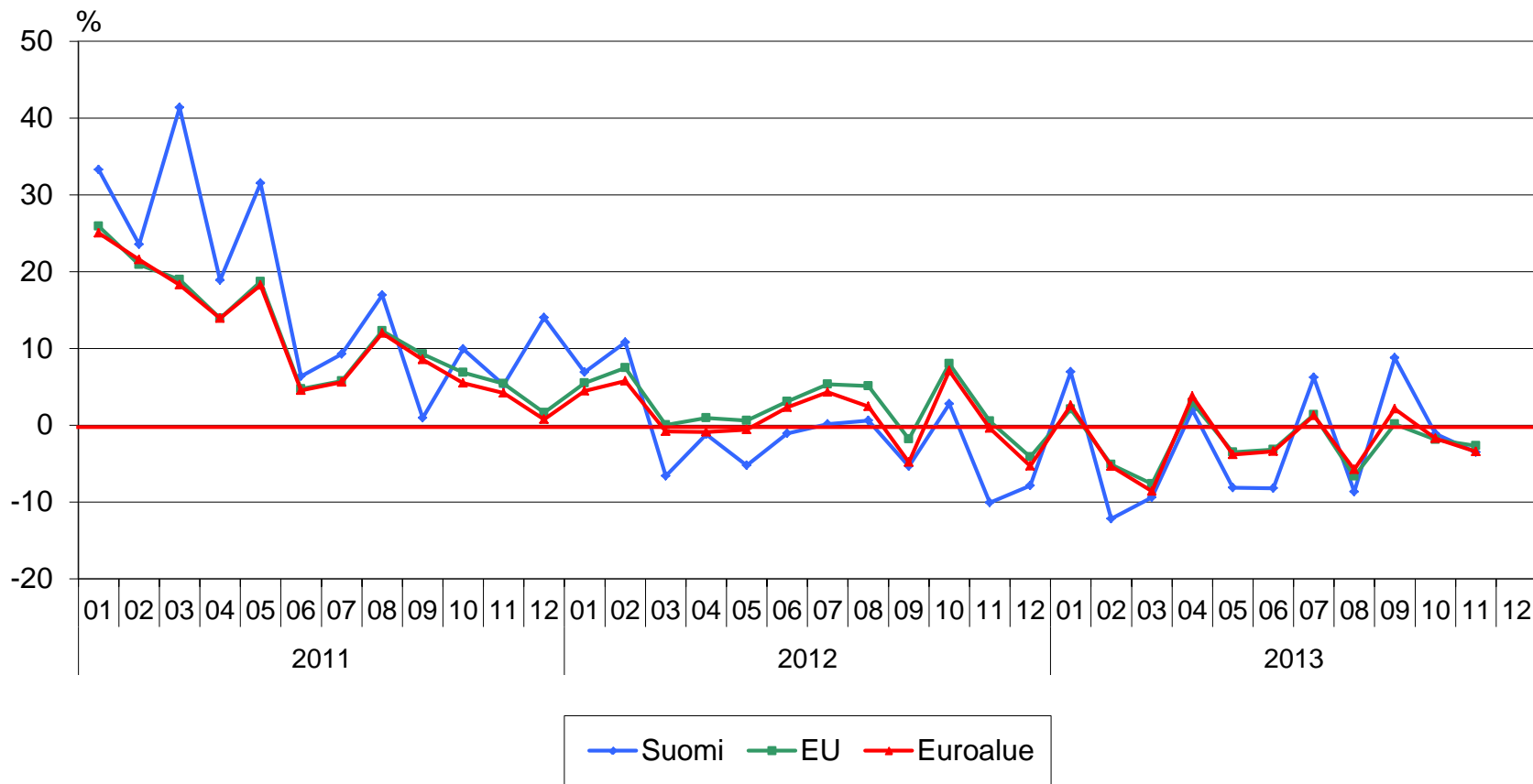


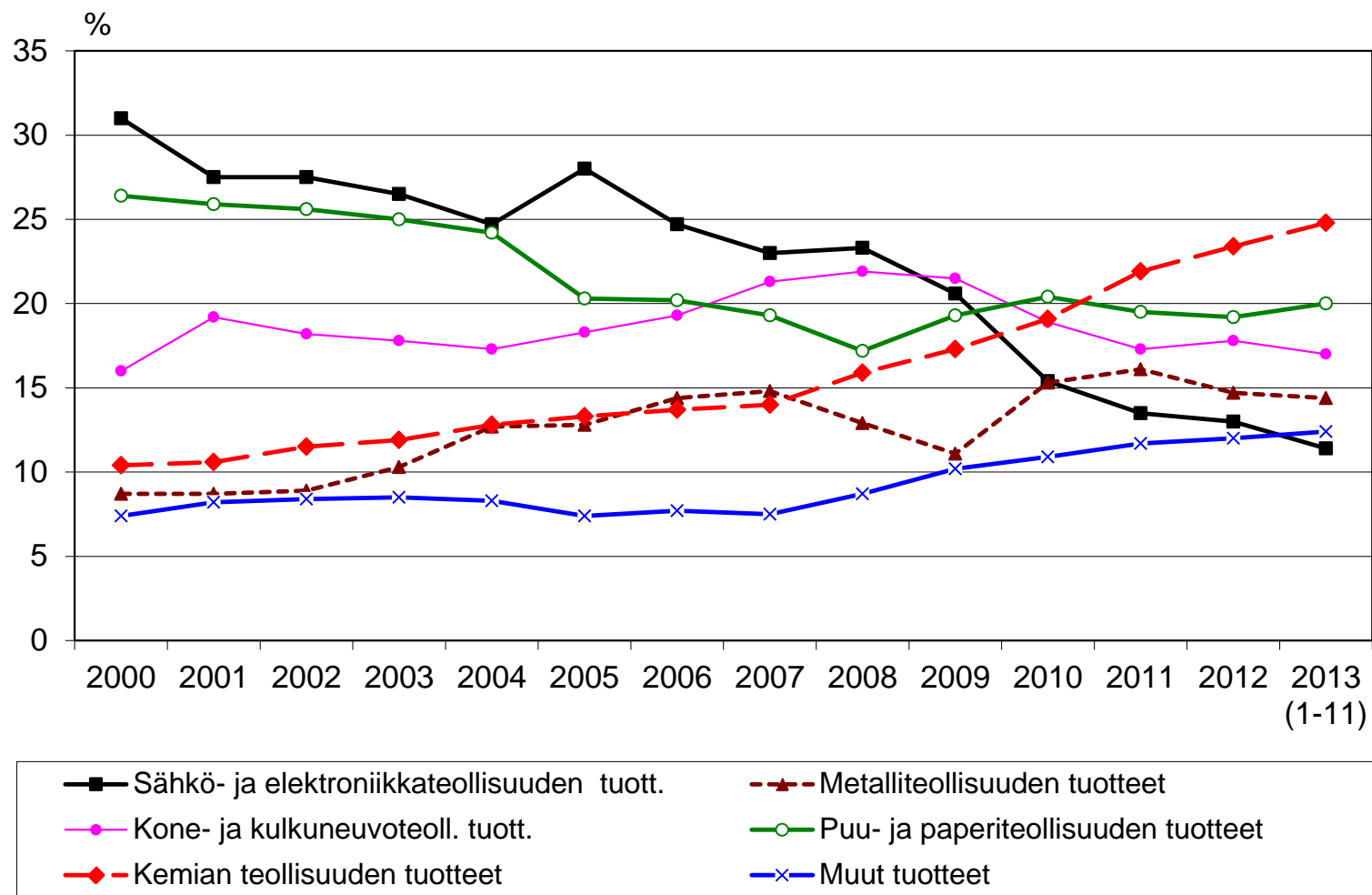


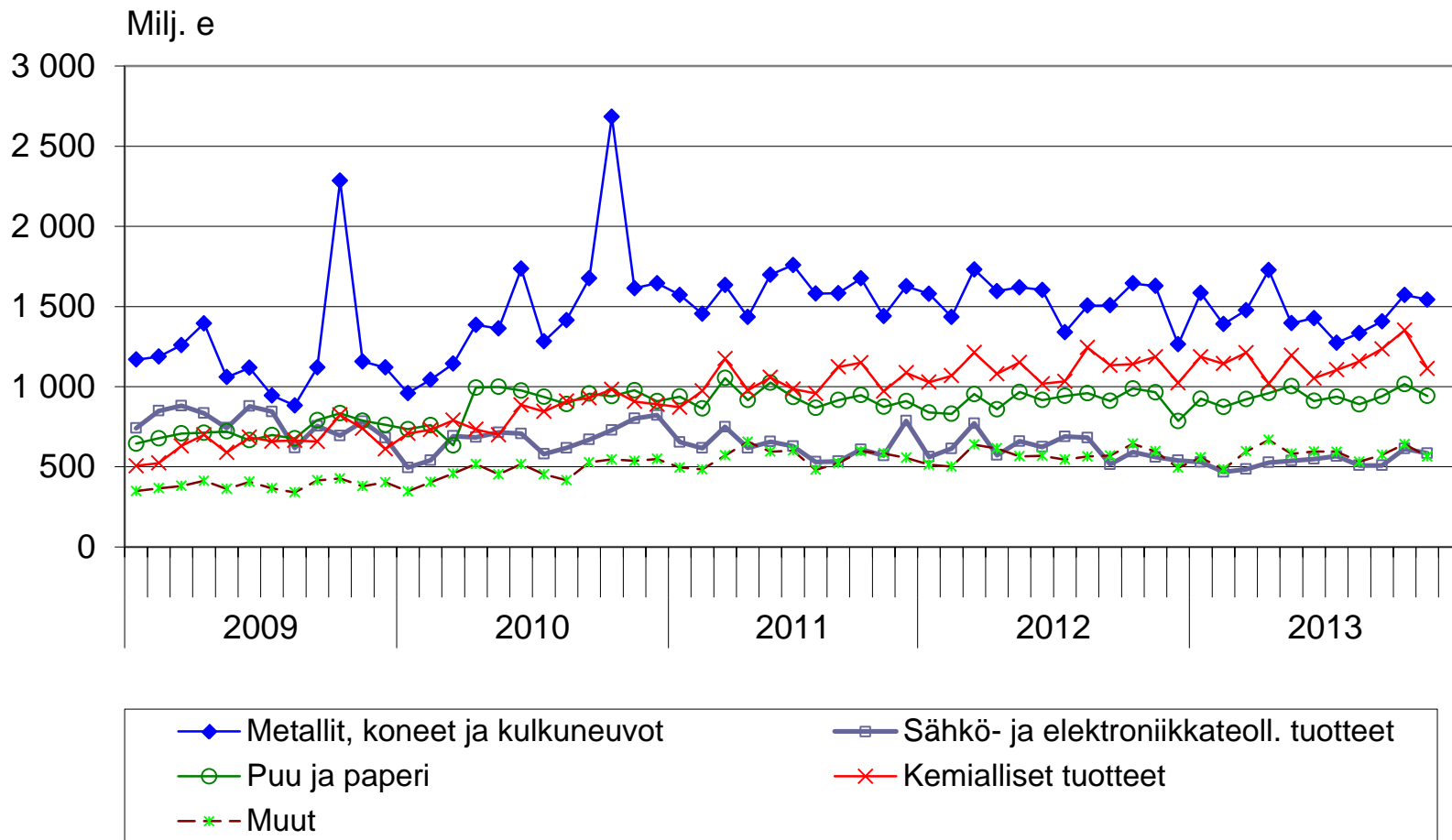


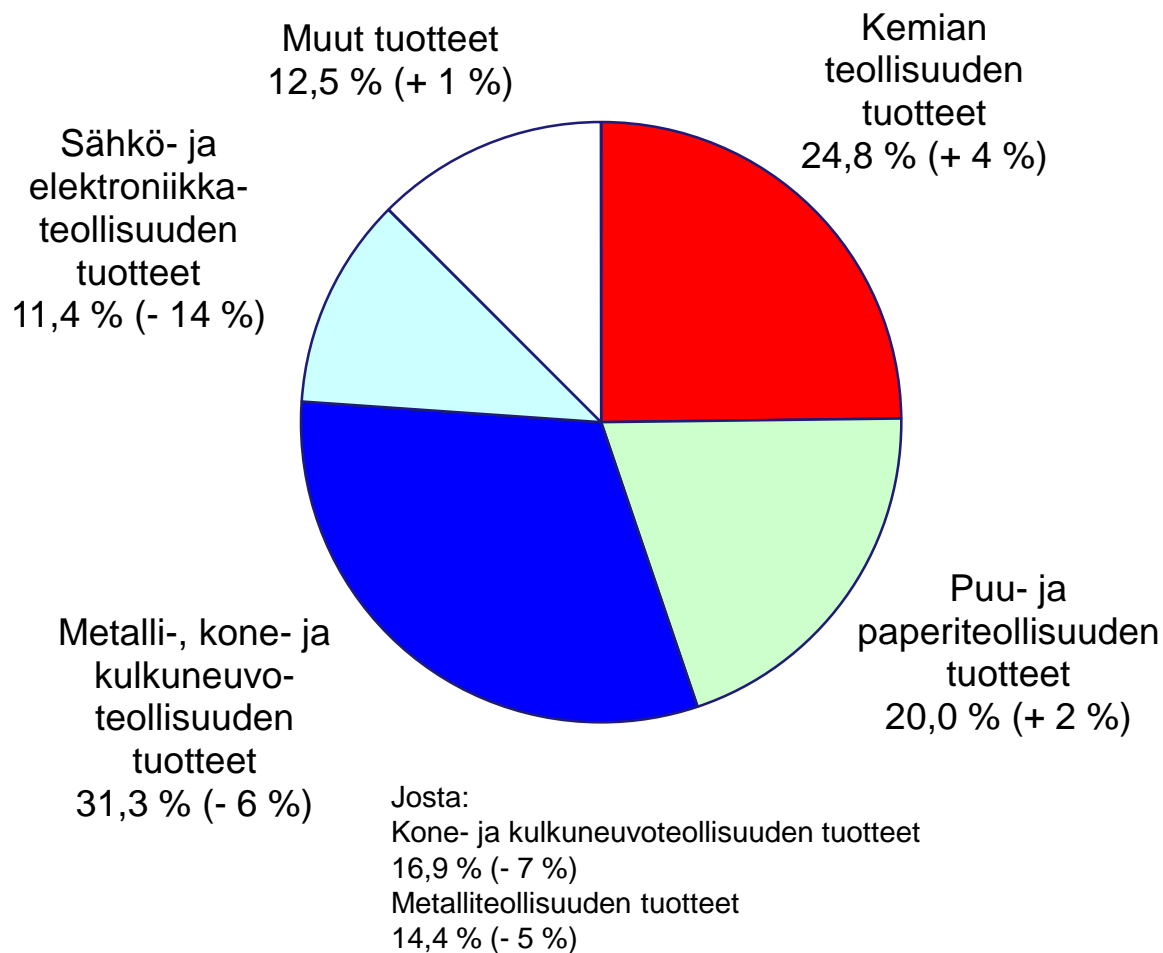


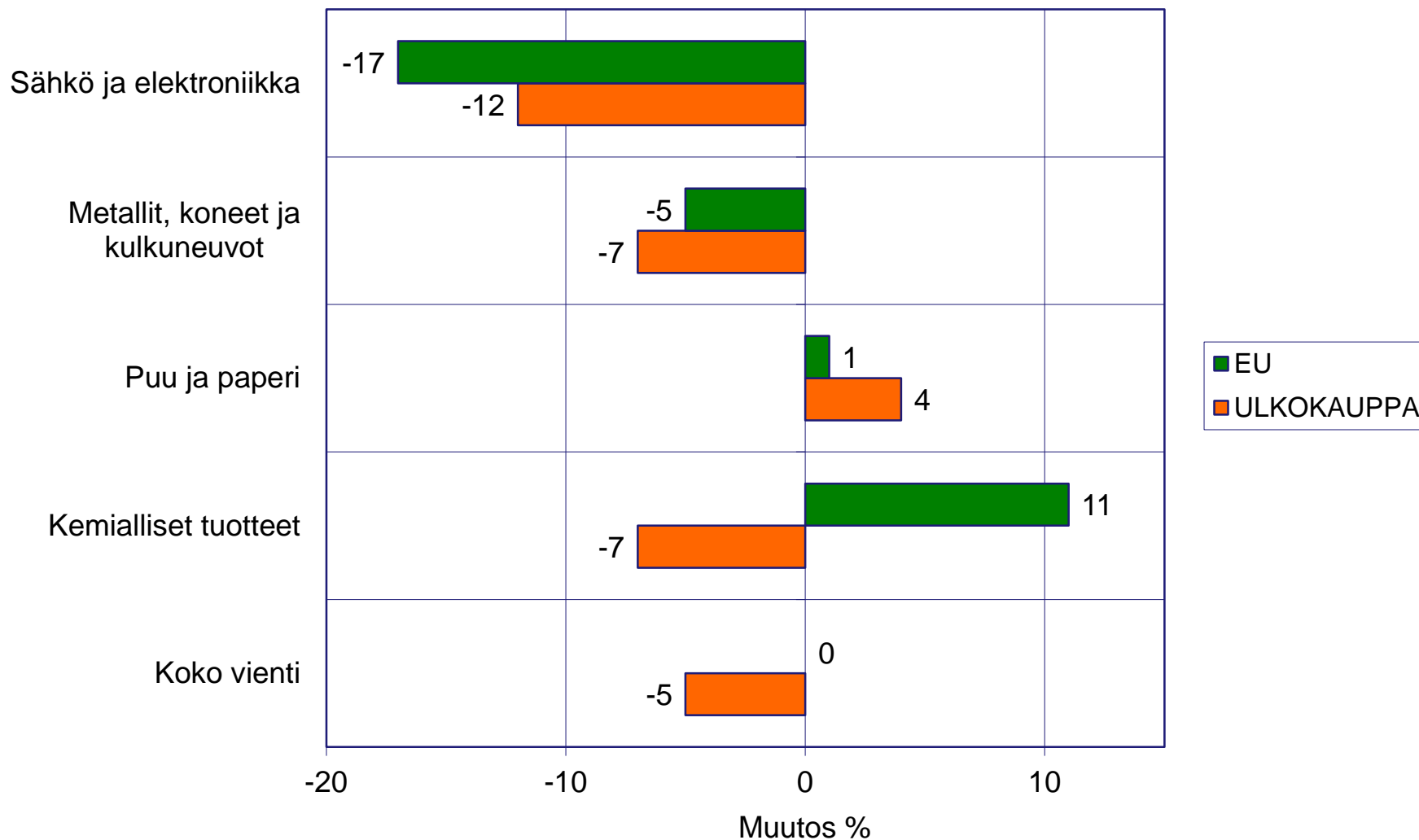


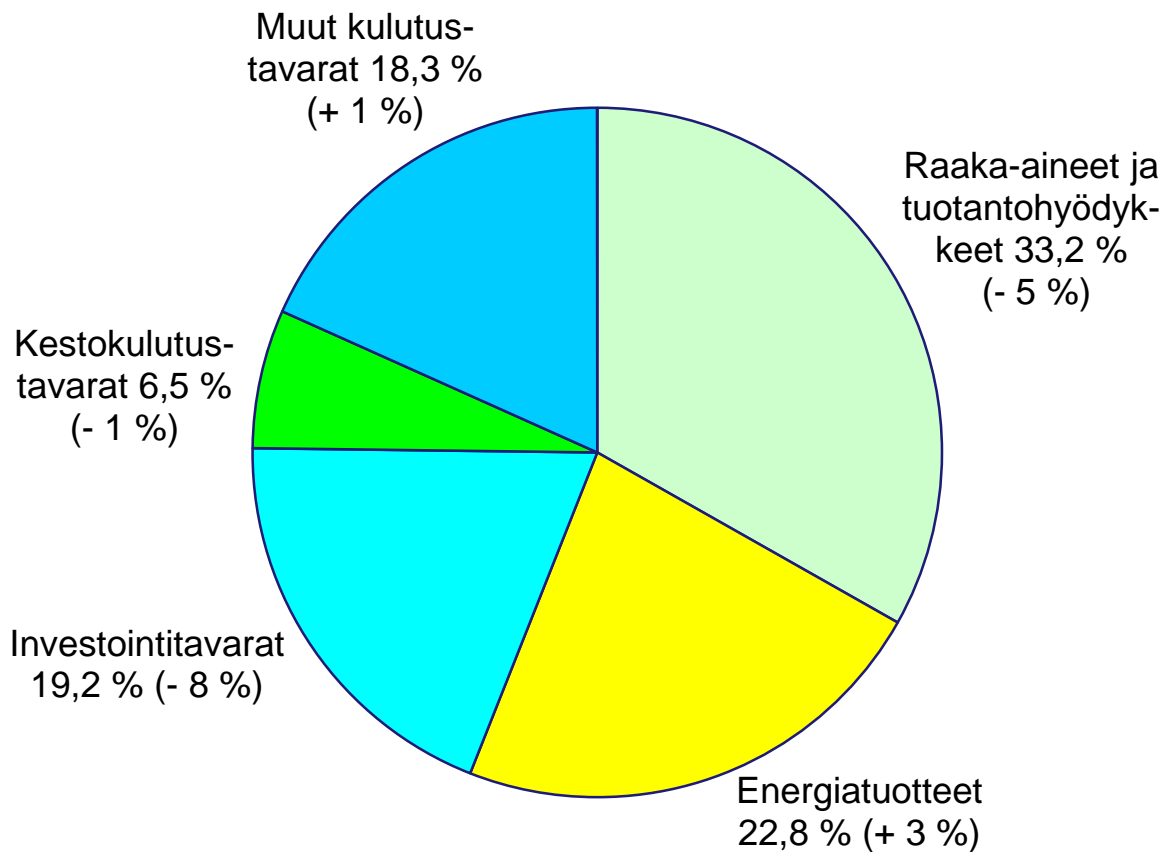


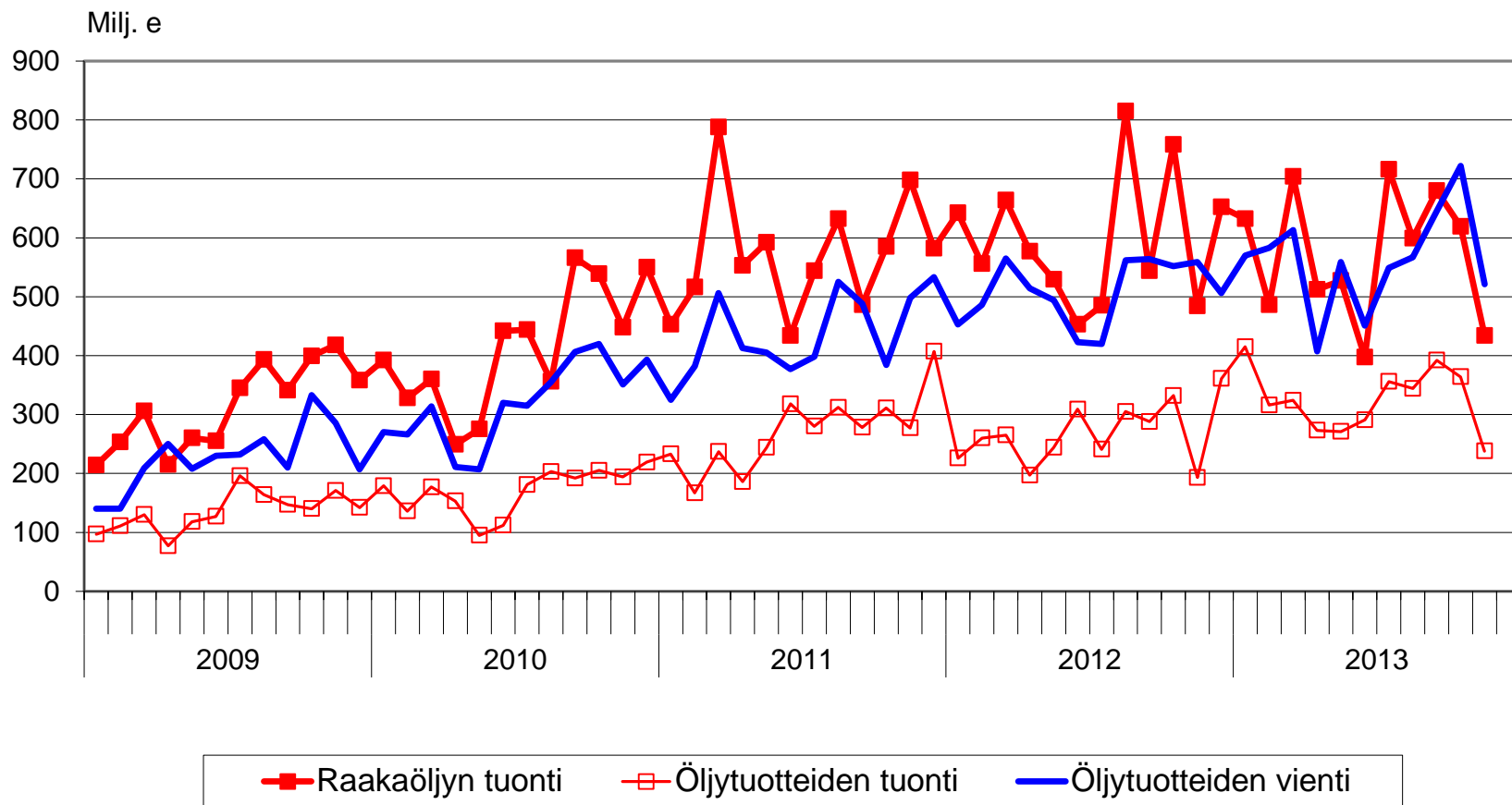


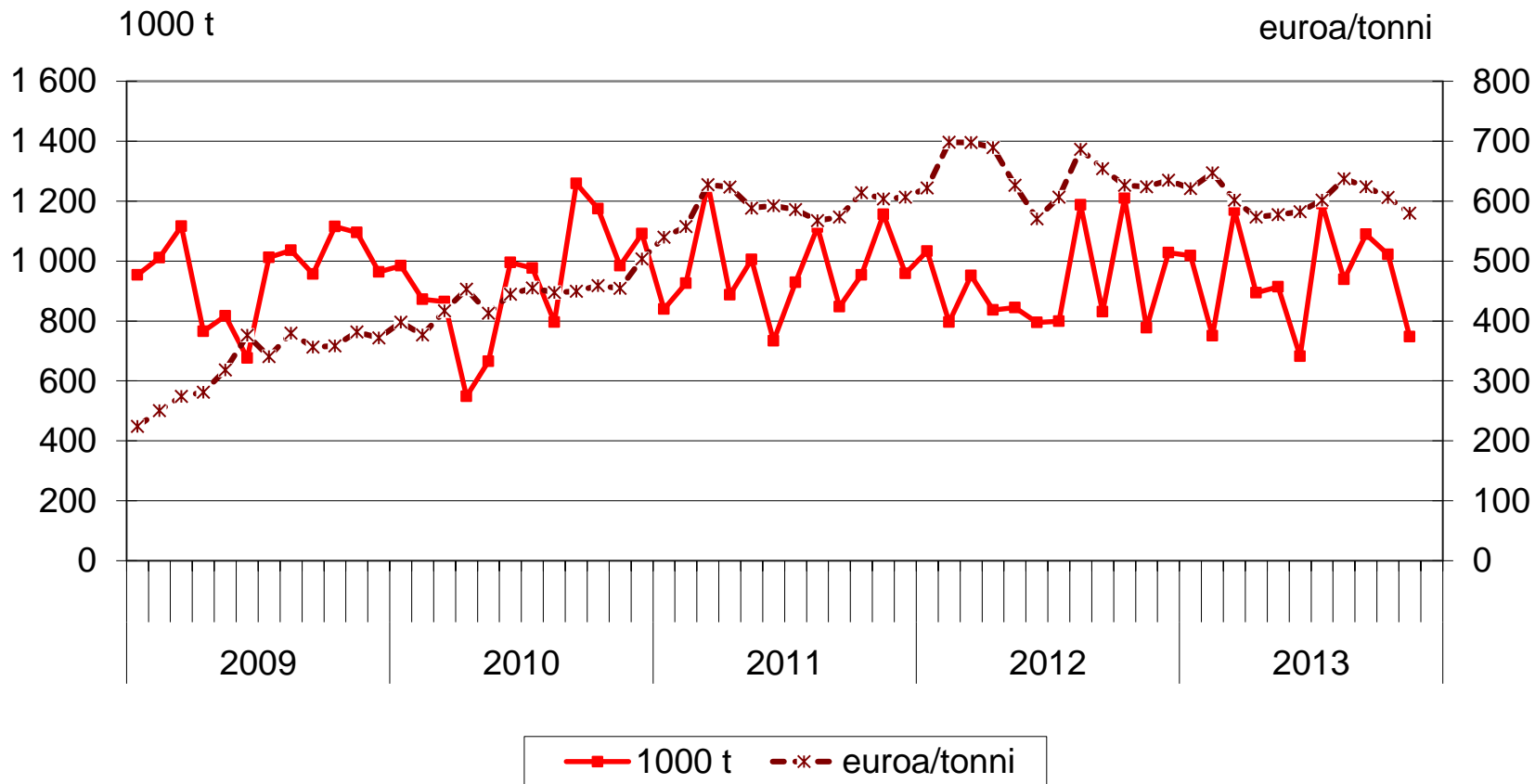


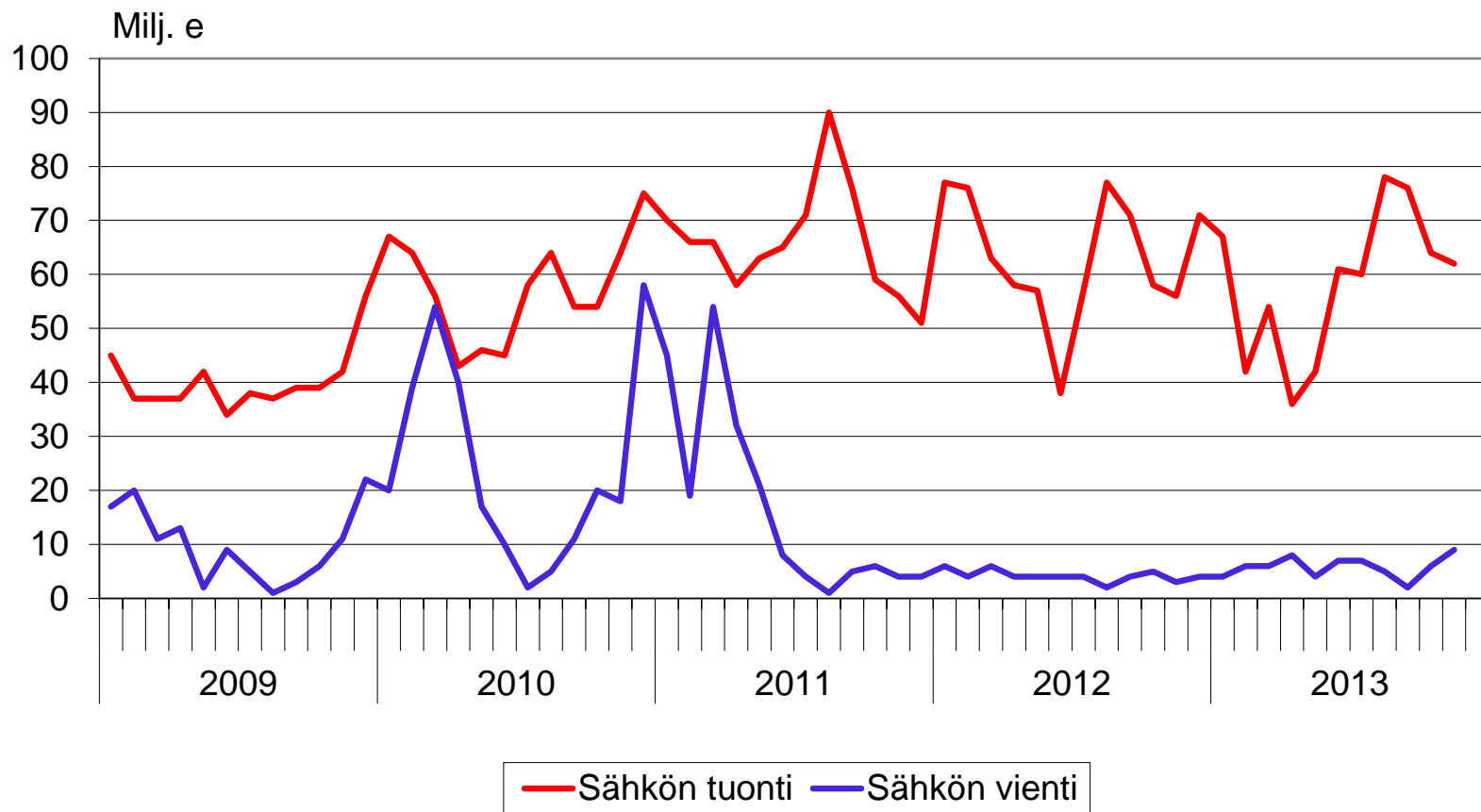


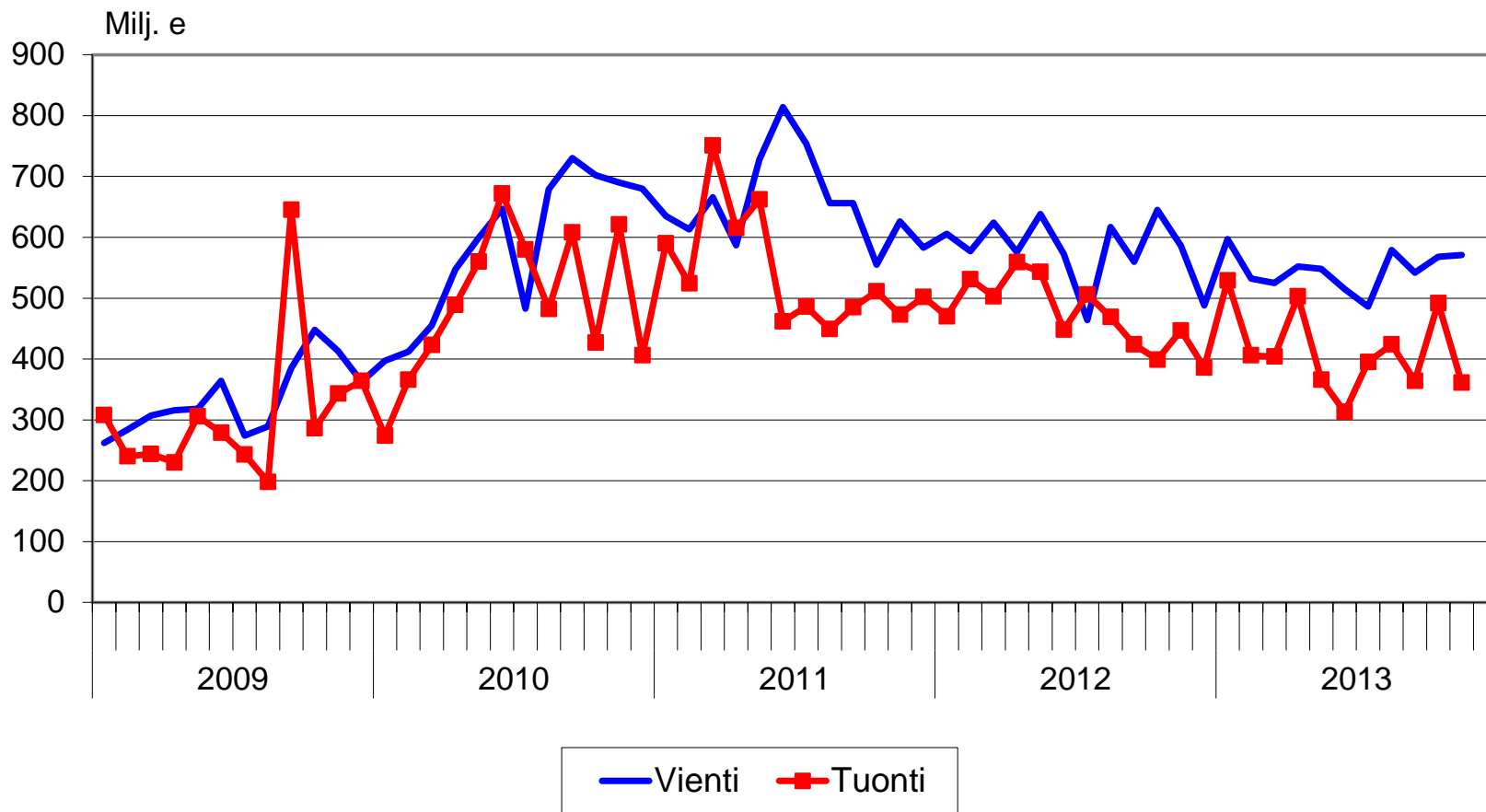






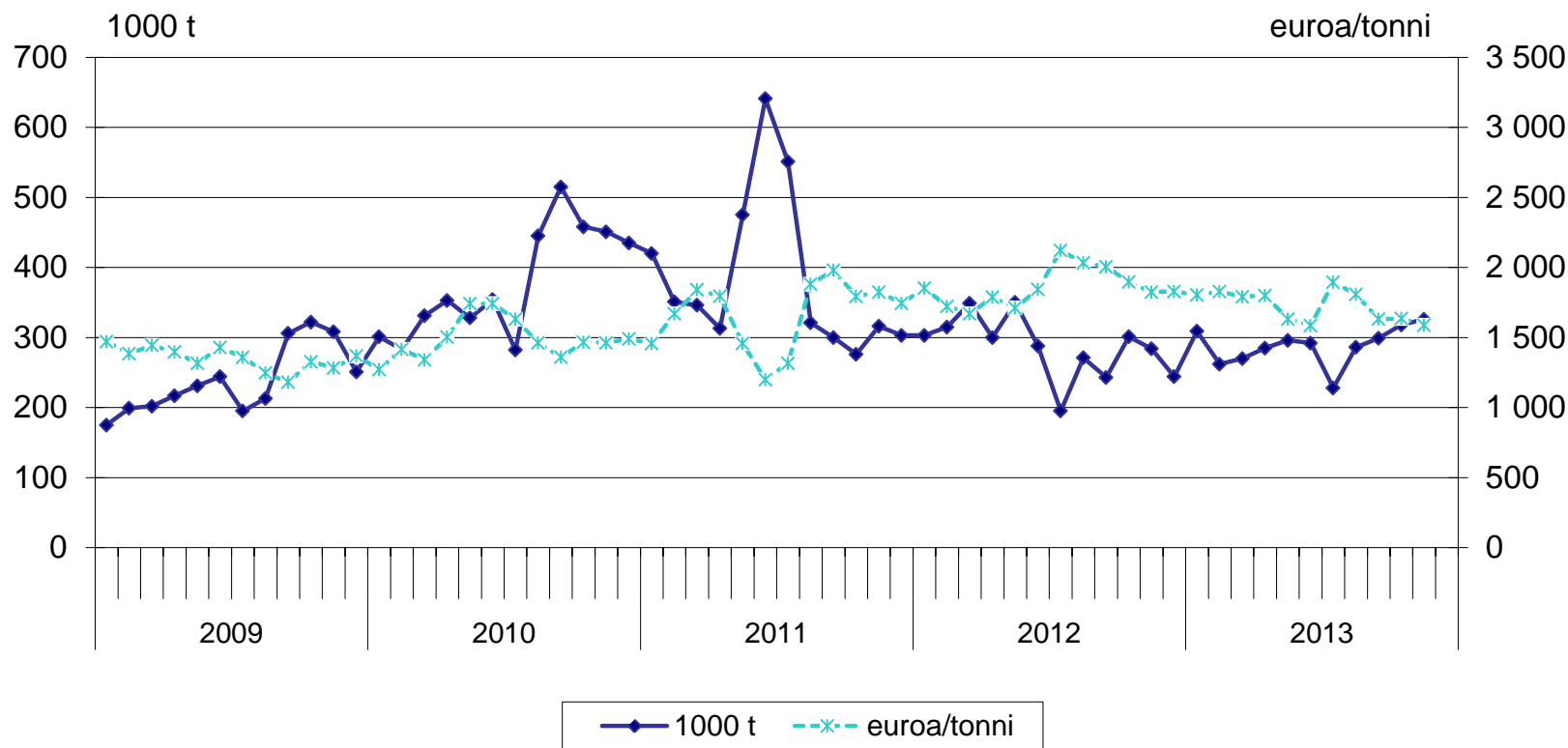


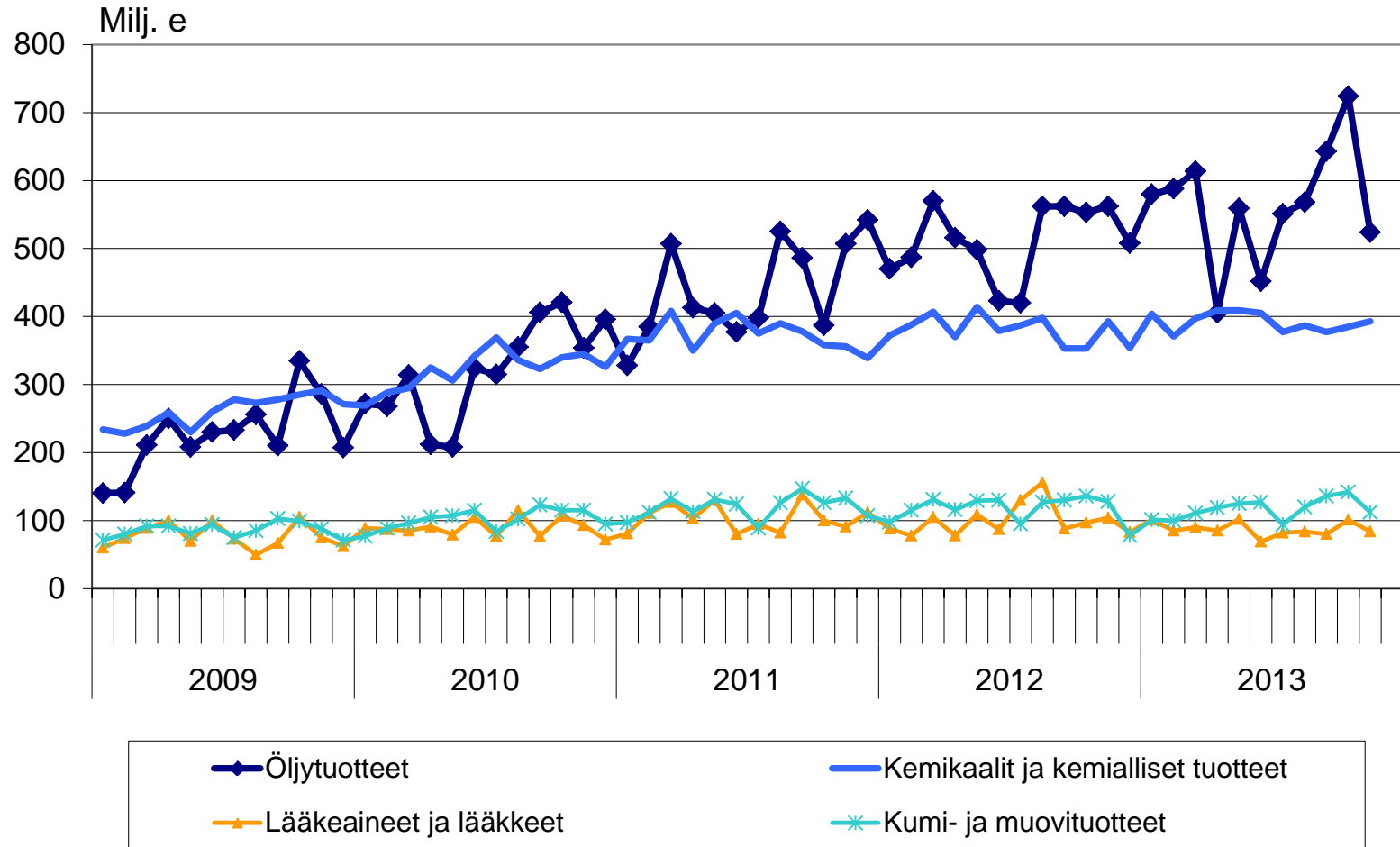


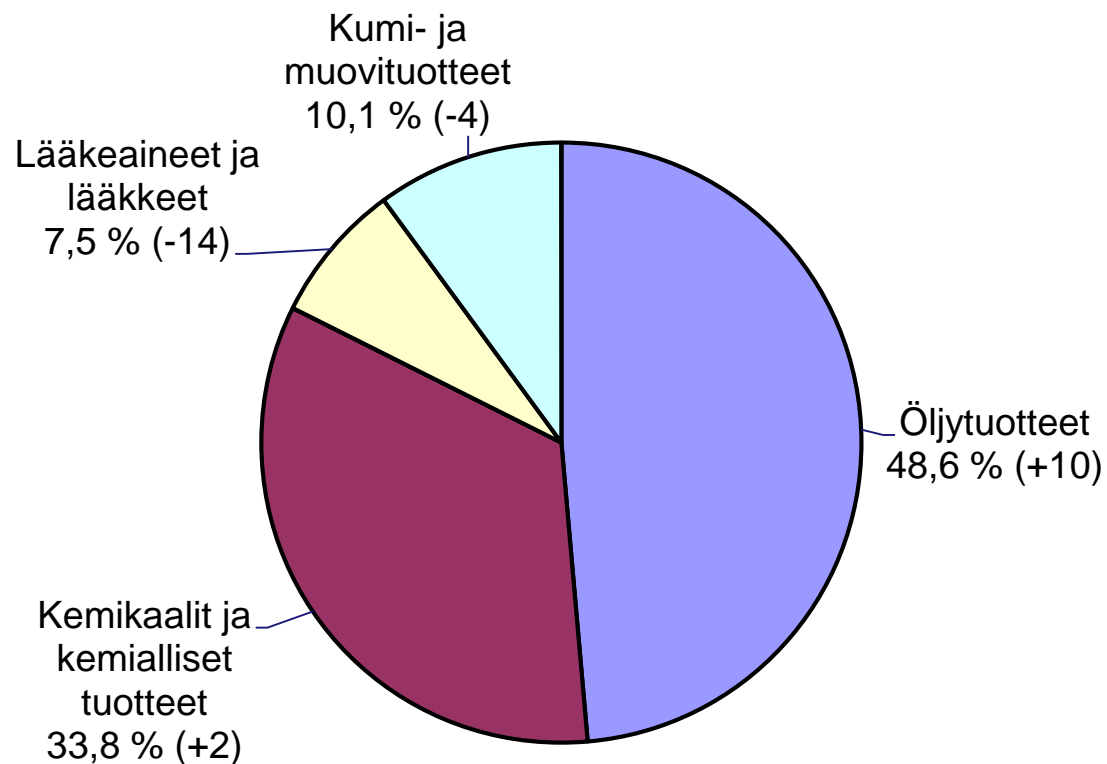


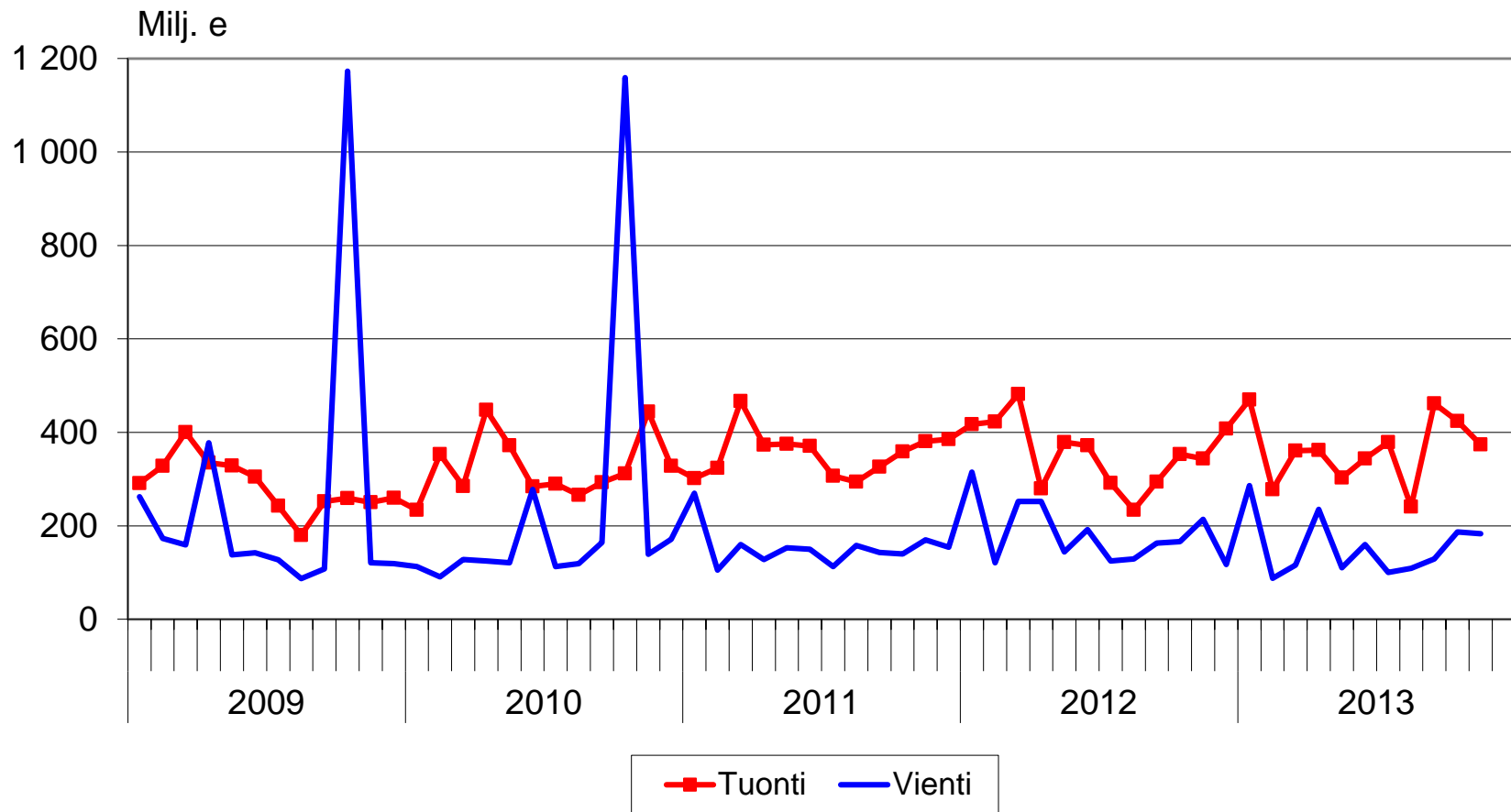


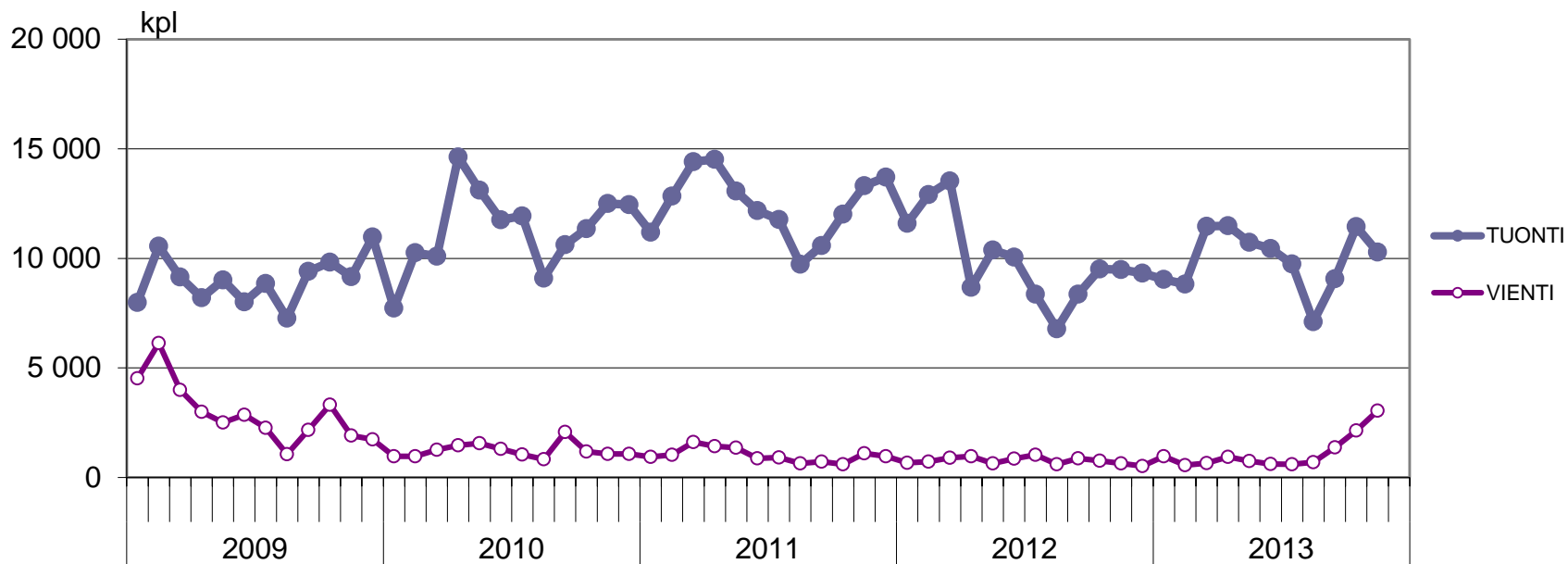
METALLIEN VIENNIN MÄÄRÄ- JA HINTAKEHITYS KUUKAUSITTAIN 2009-2013(1-11); (SITC 67,68)





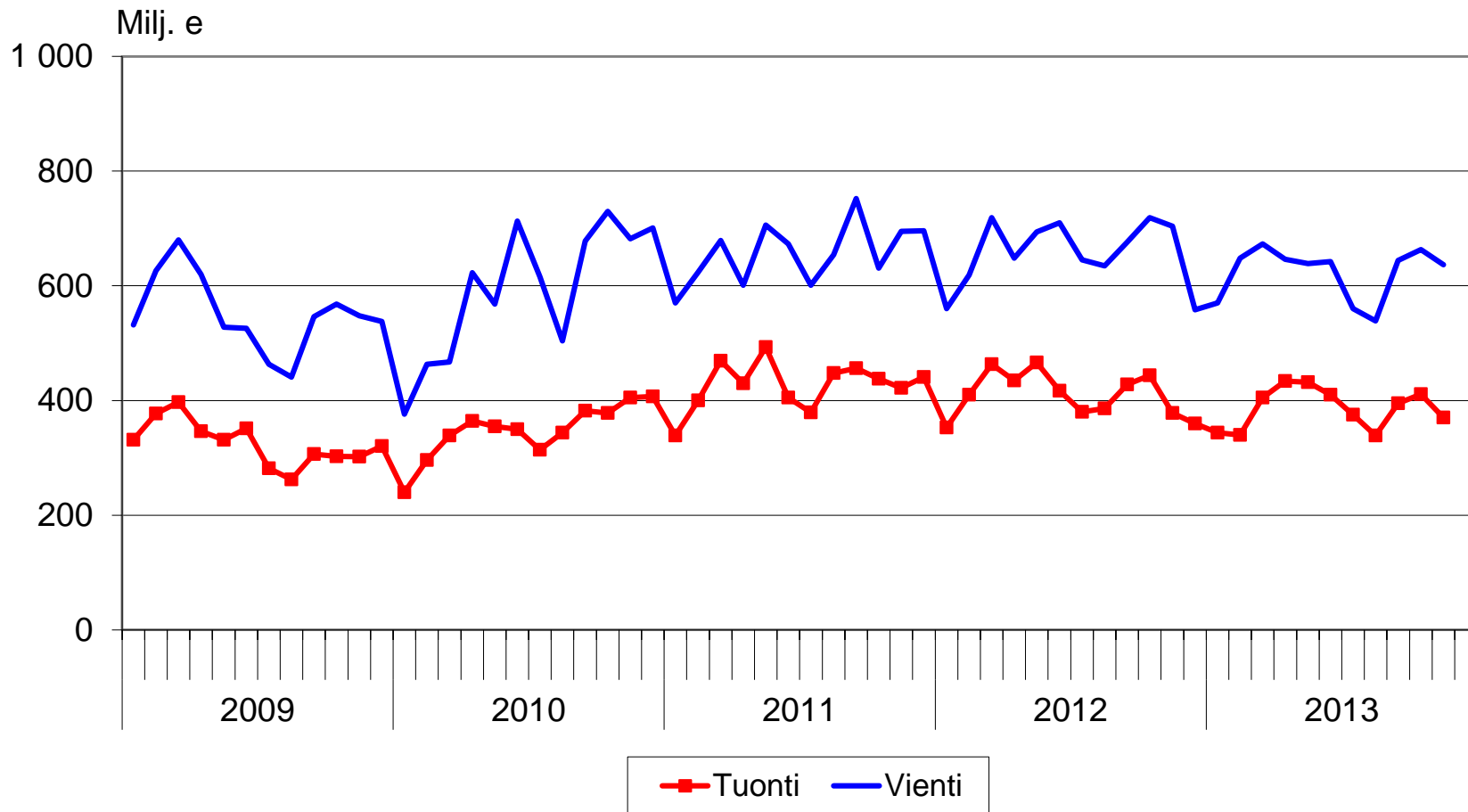


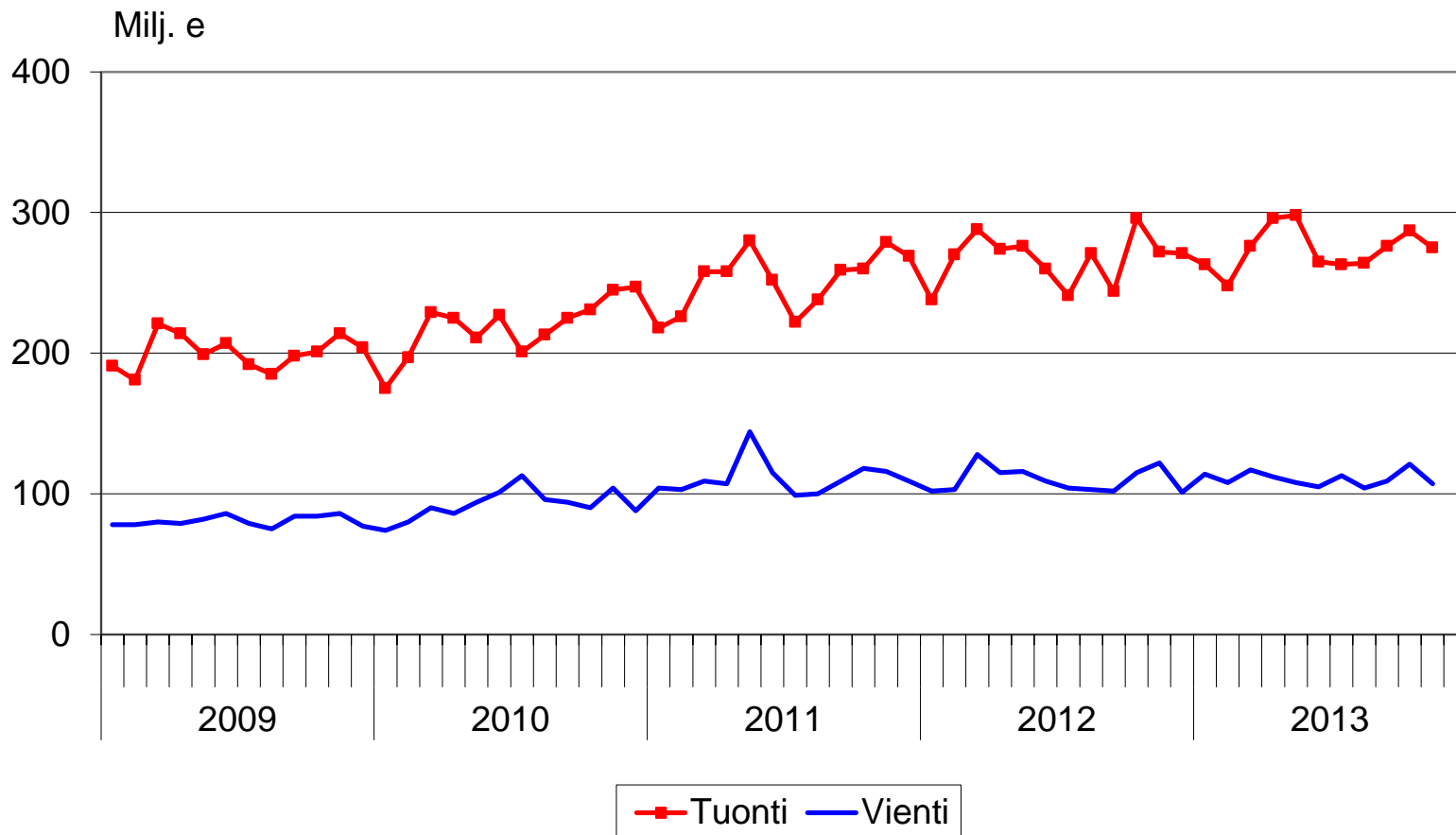


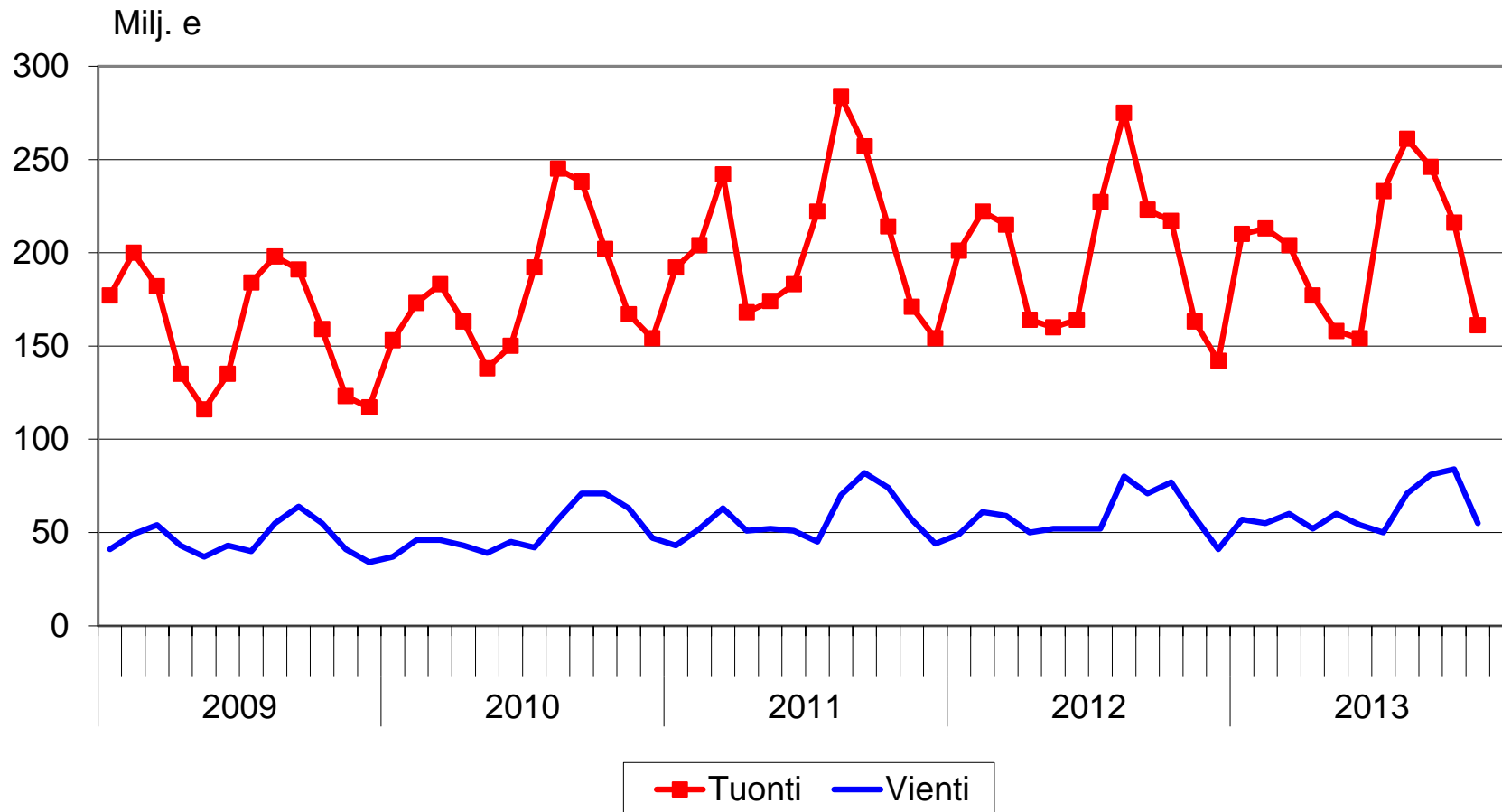


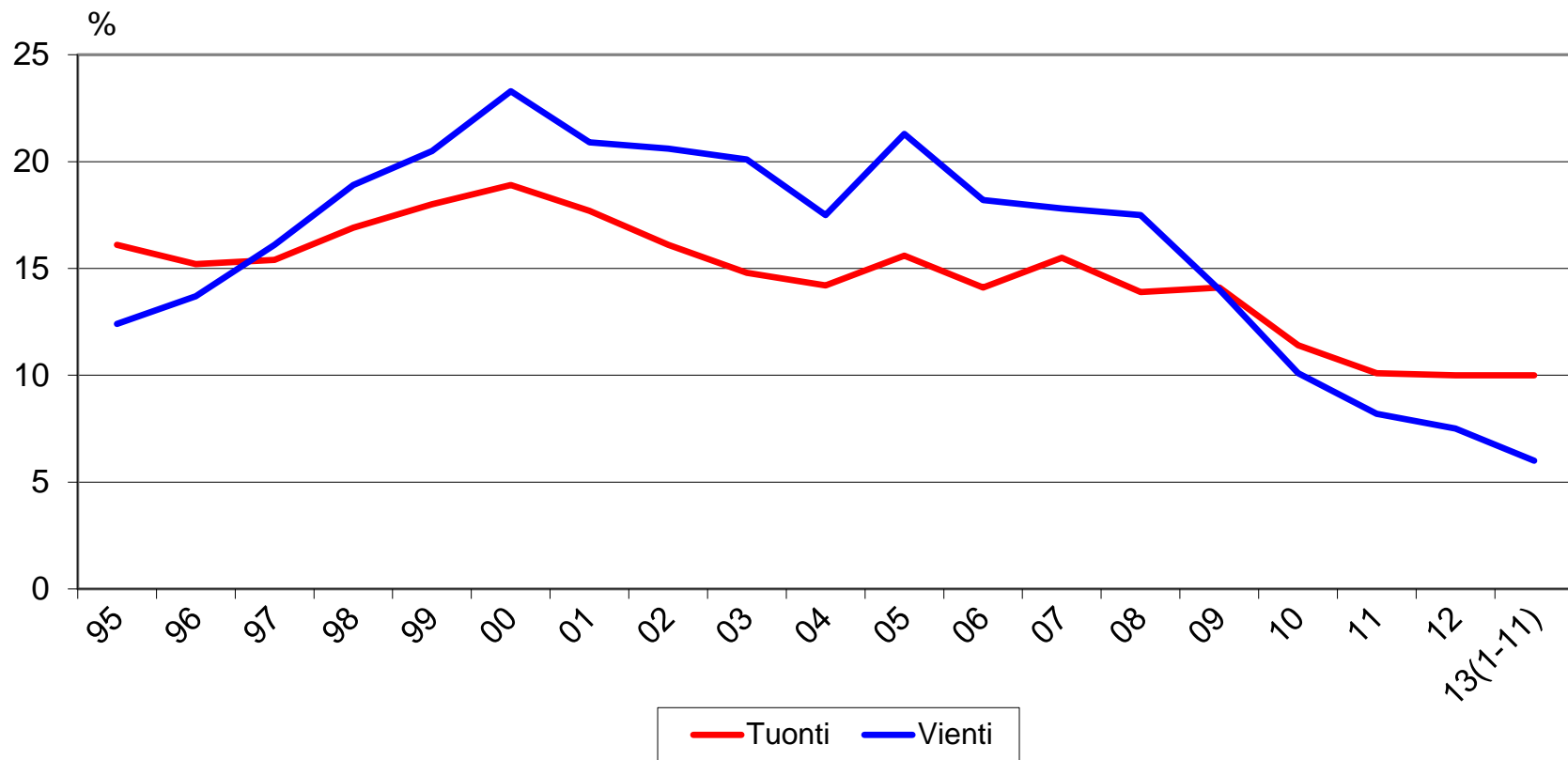
Henkilöautojen tuonti ja vienti (kpl)

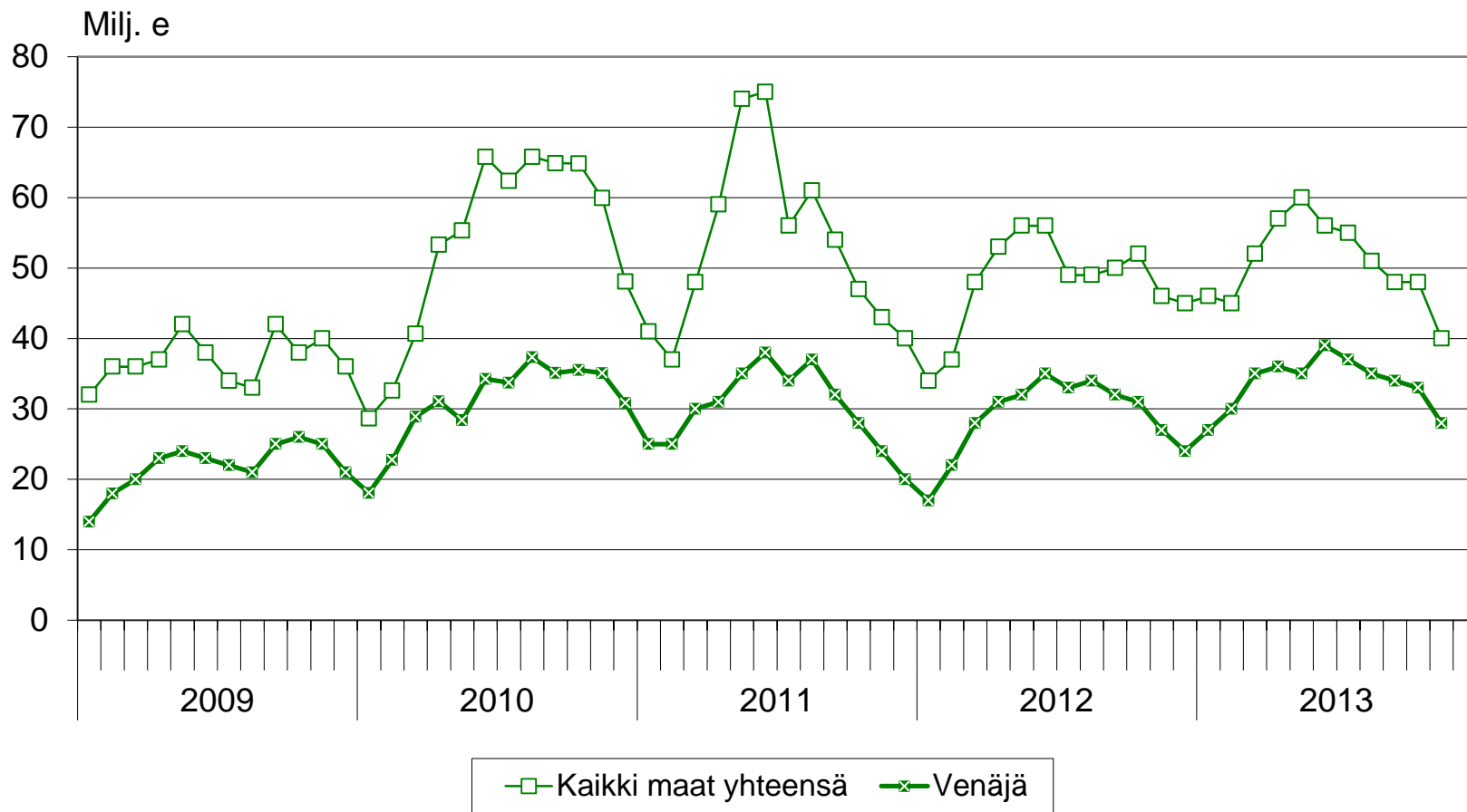
	<u>tuonti</u>	<u>vienti</u>
2008	252 424	121 503
2009	108 411	35 422
2010	135 537	14 764
2011	149 316	12 133
2012	118 978	9 157
2013(1-11)	109 629	12 320







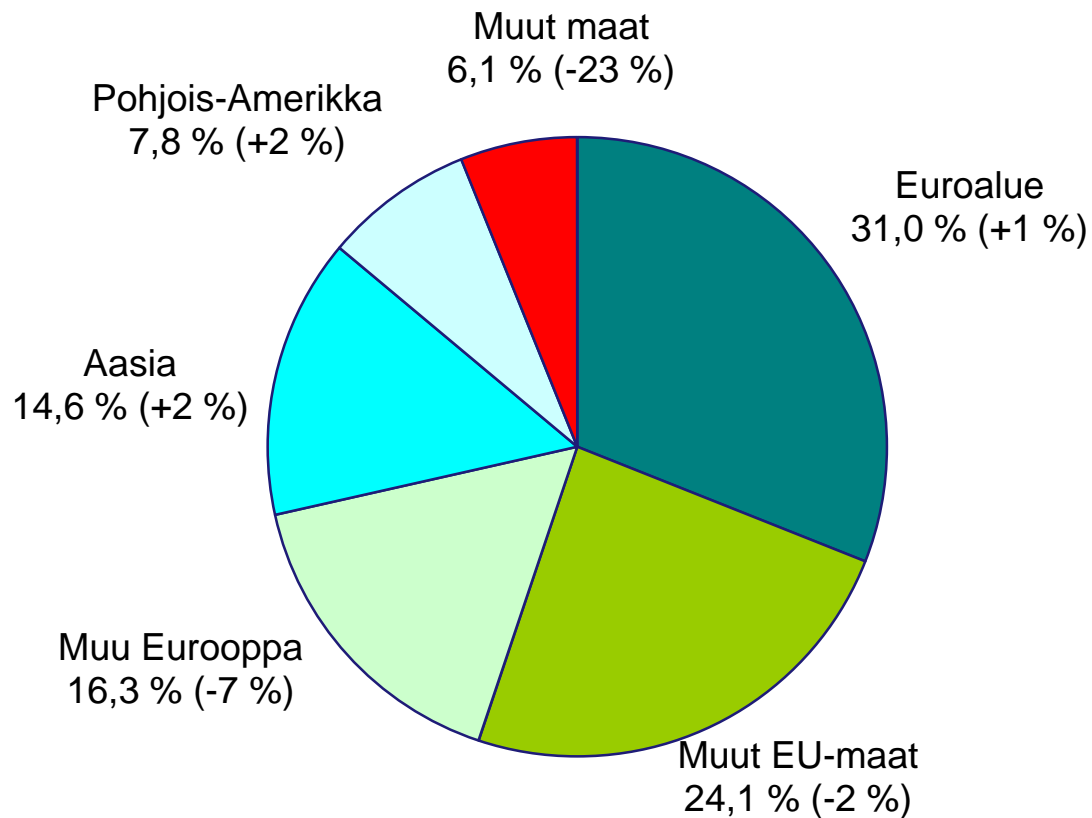


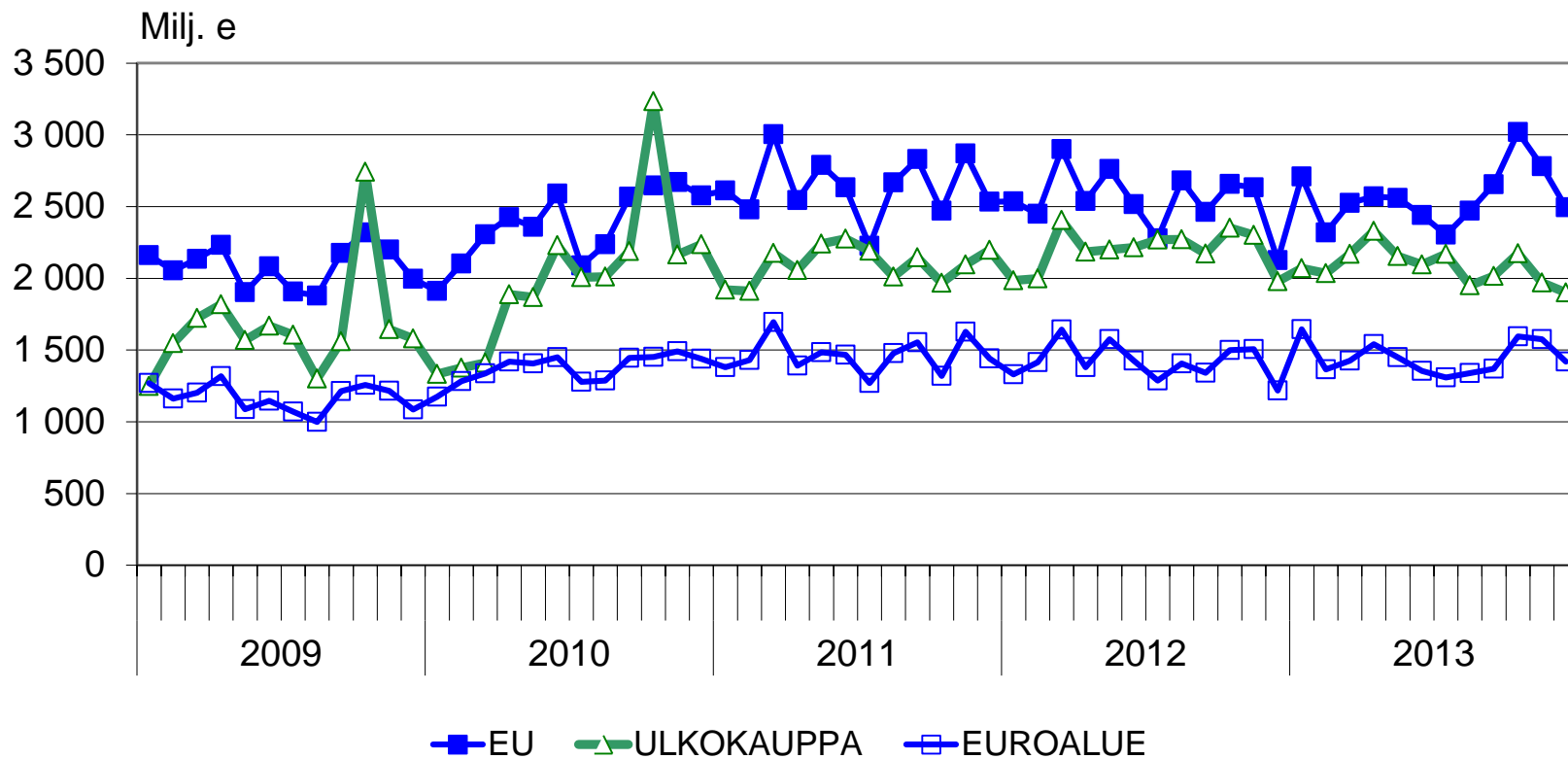


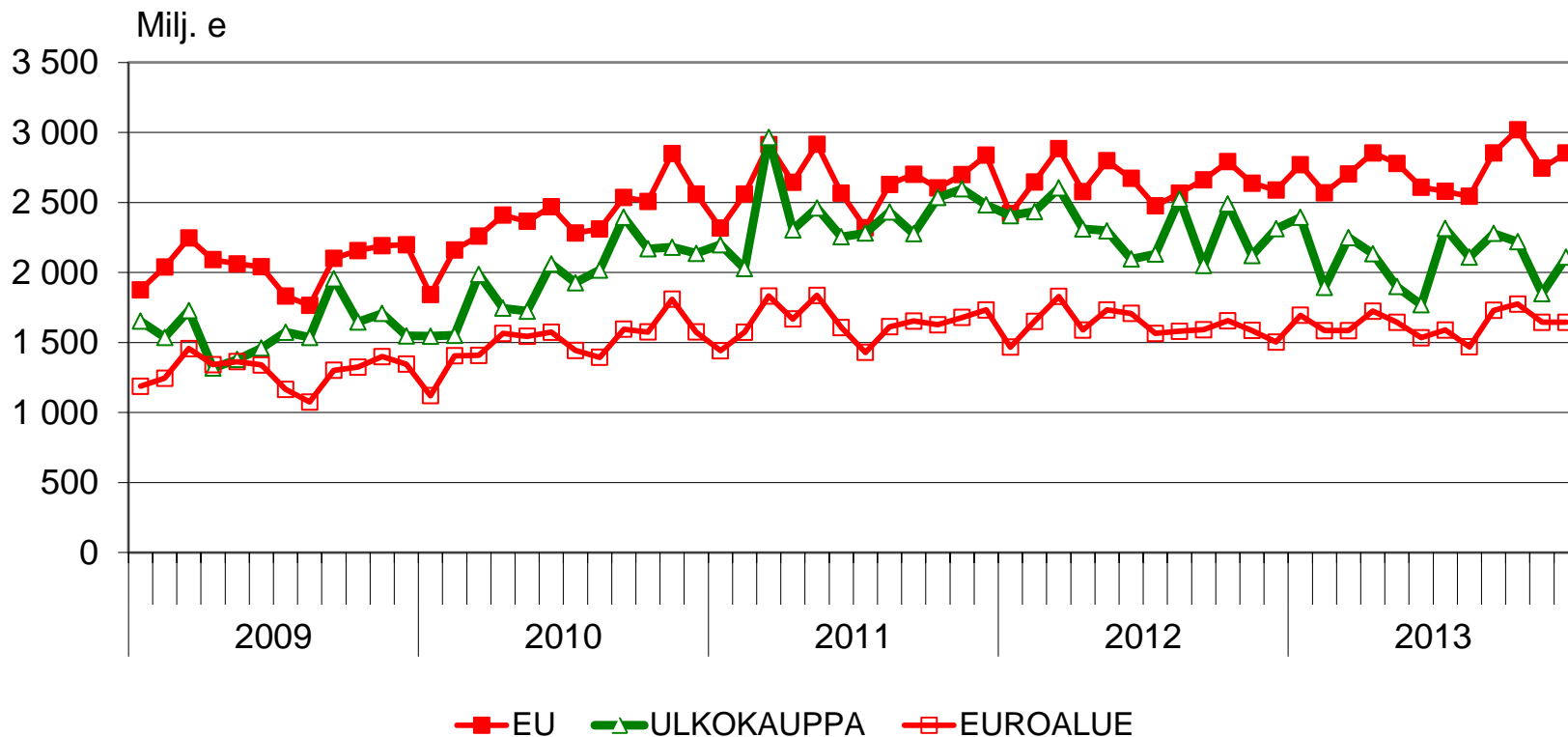


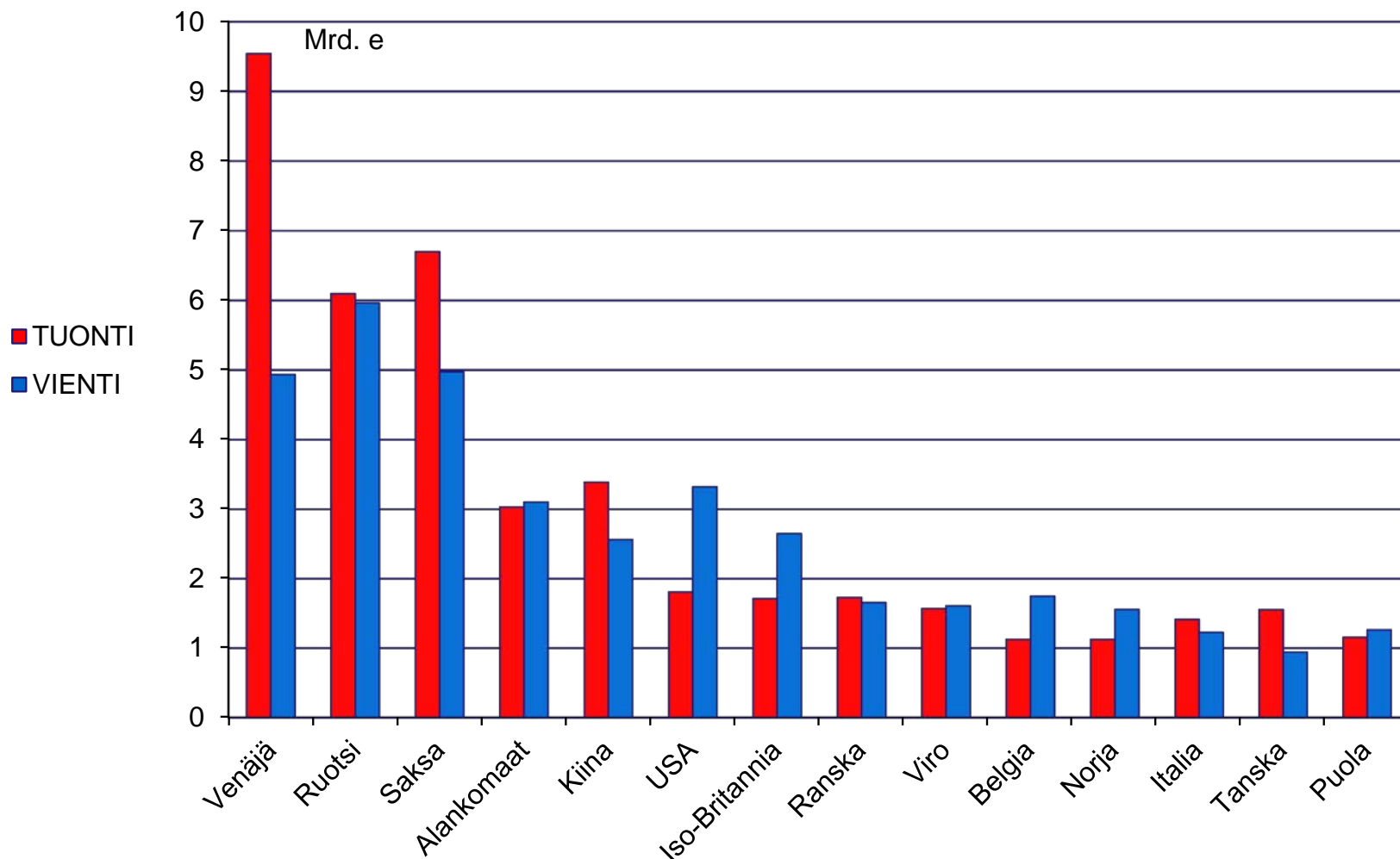
VIENTI MAARYHMITÄIN 2013(1-11)

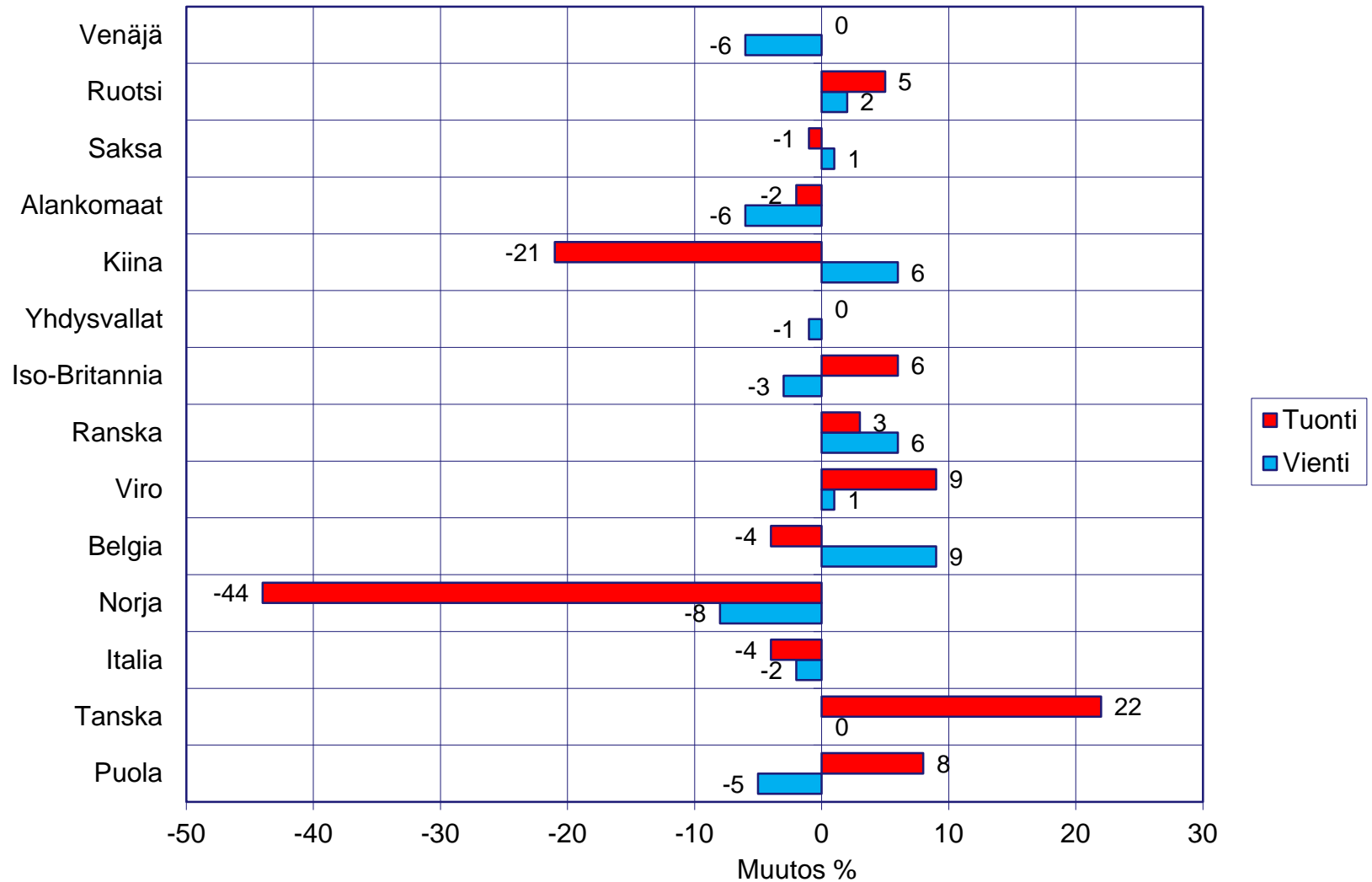
Osuus viennistä ja arvon muutos edellisen vuoden vastaavaan ajanjaksoon (%)

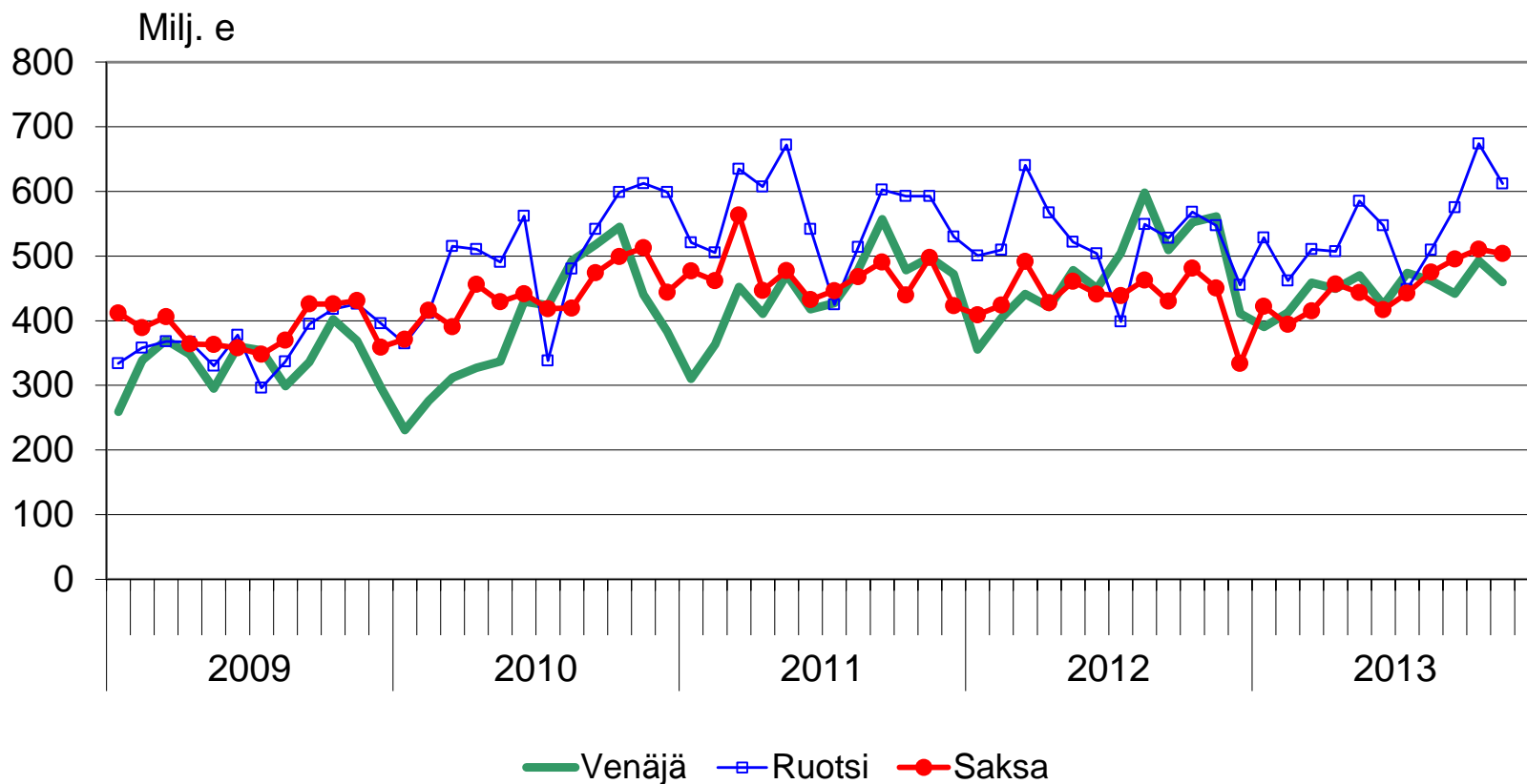


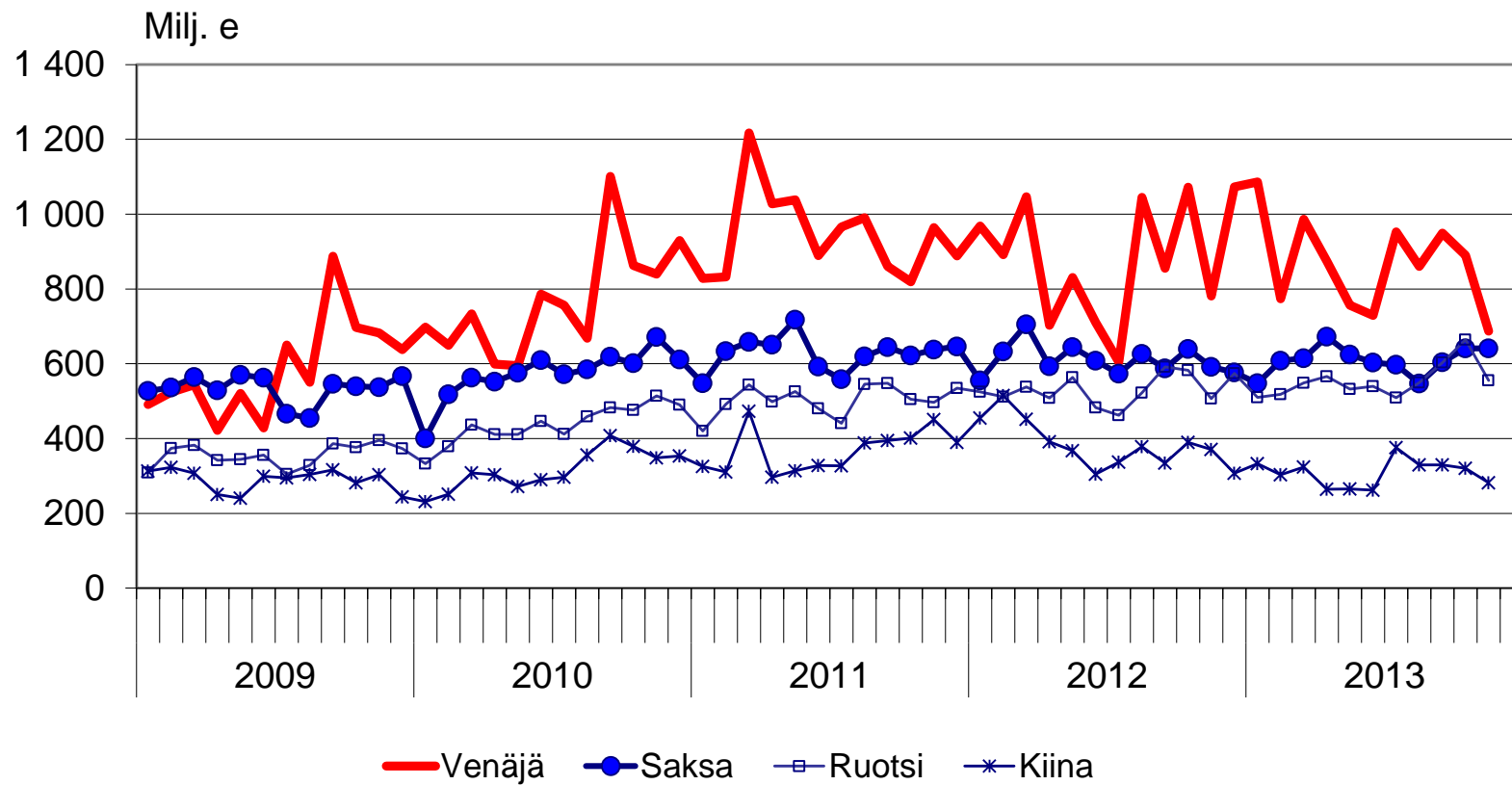


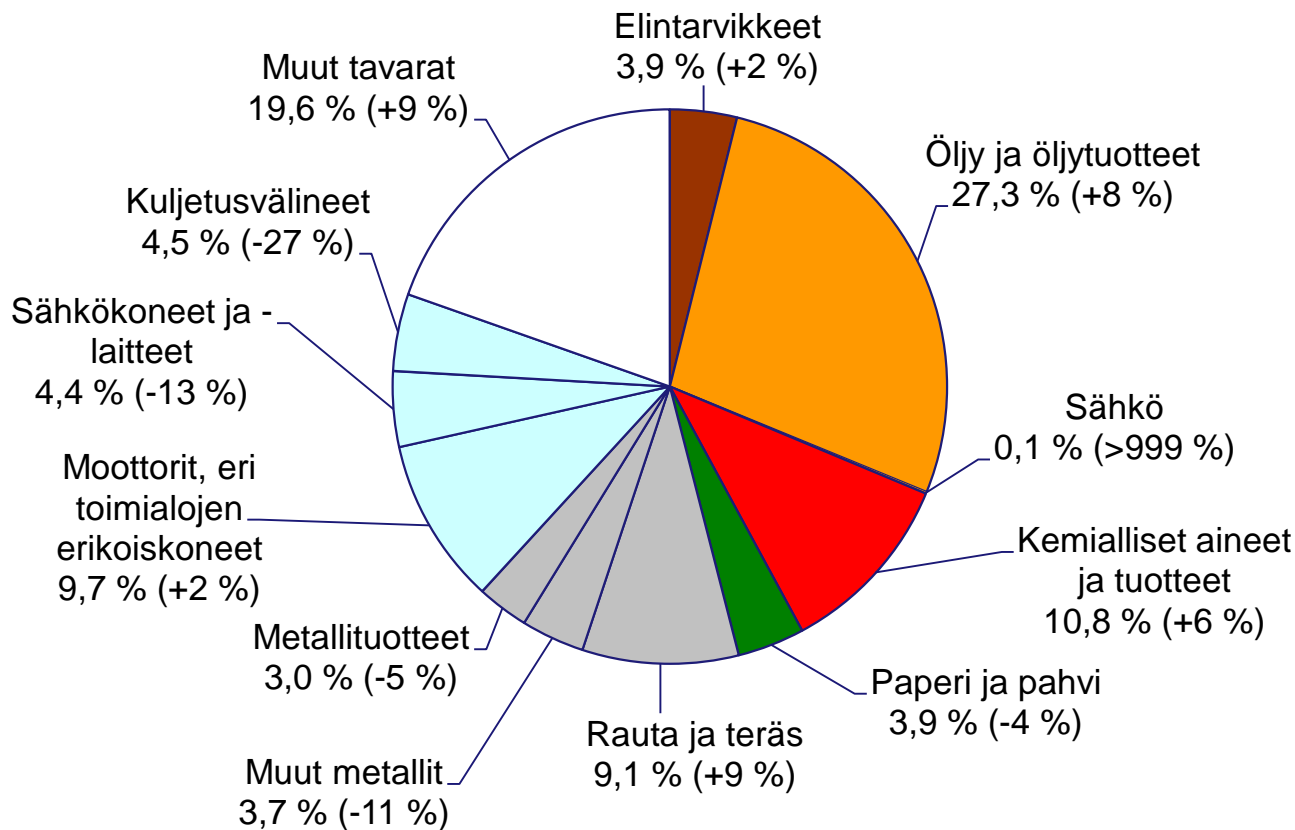




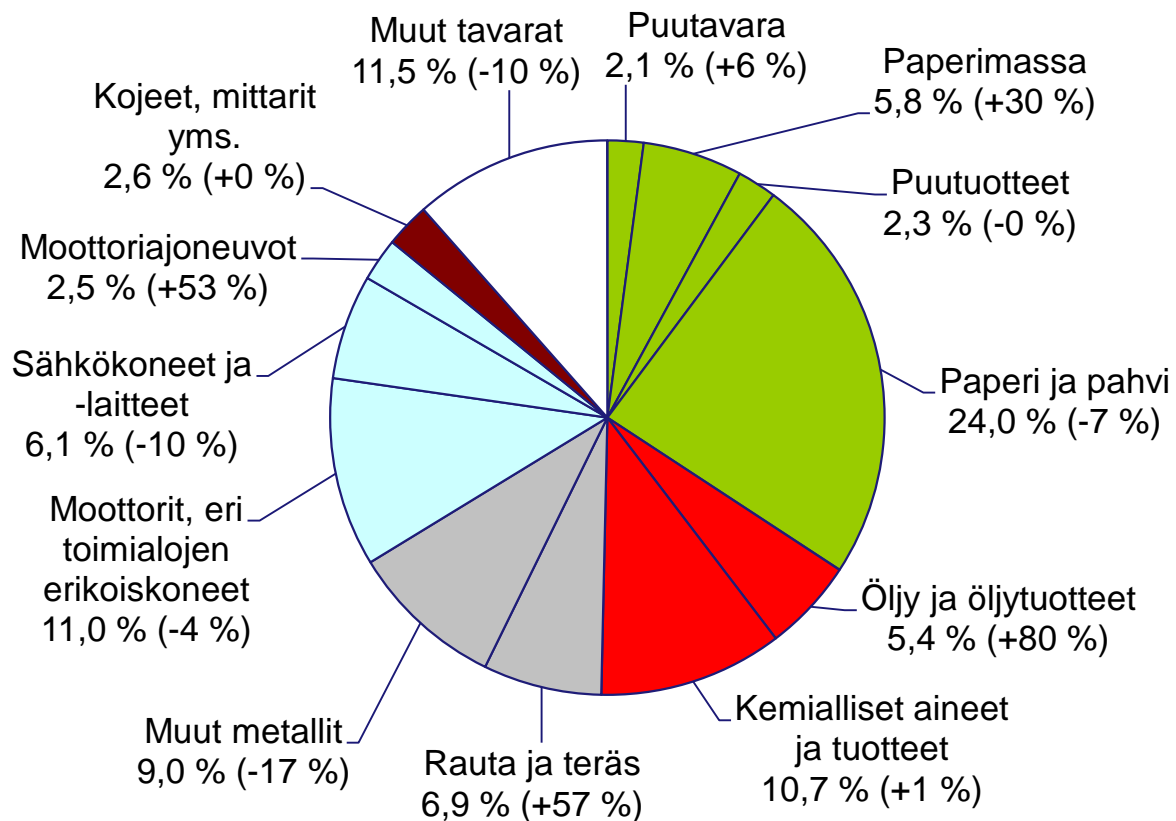




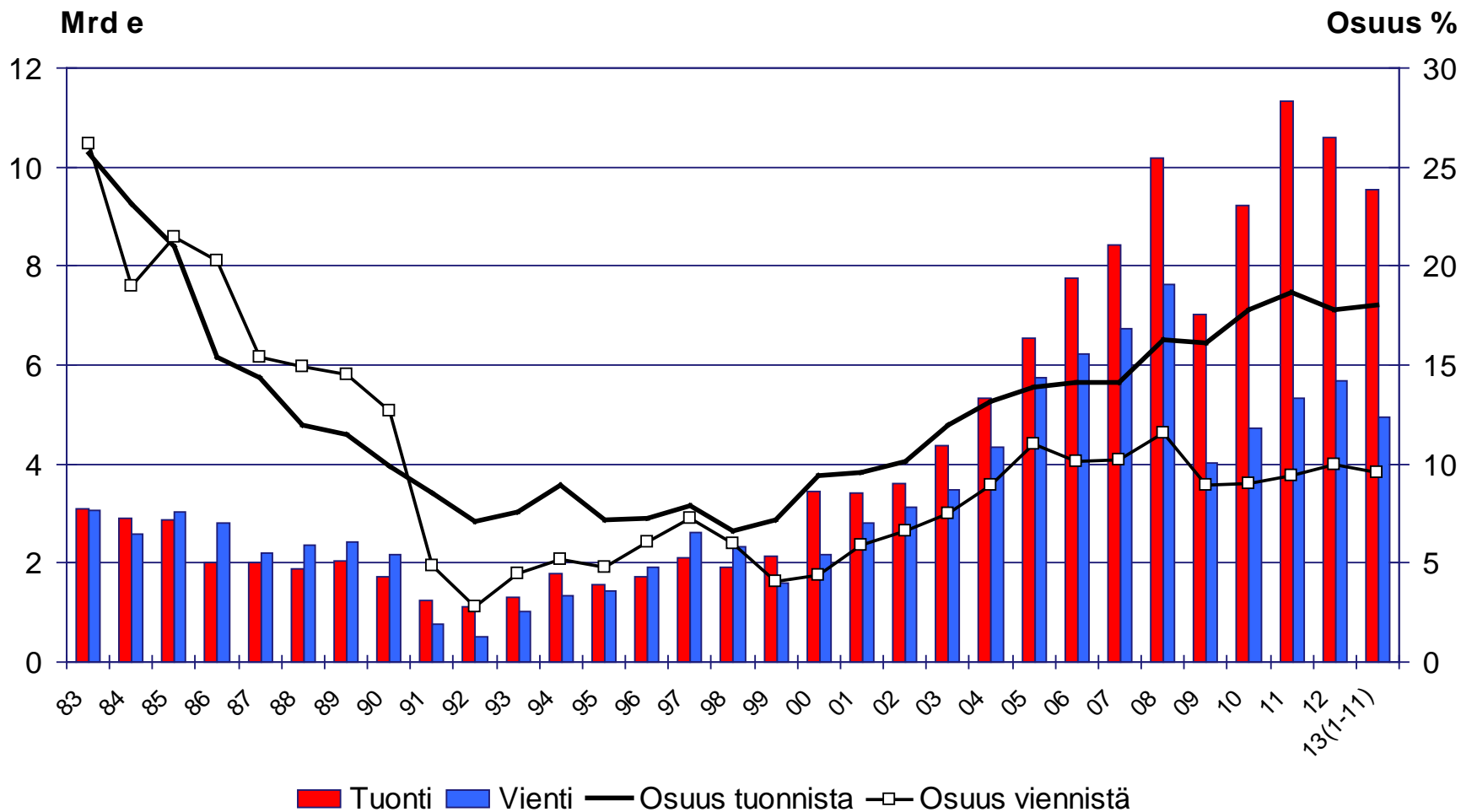


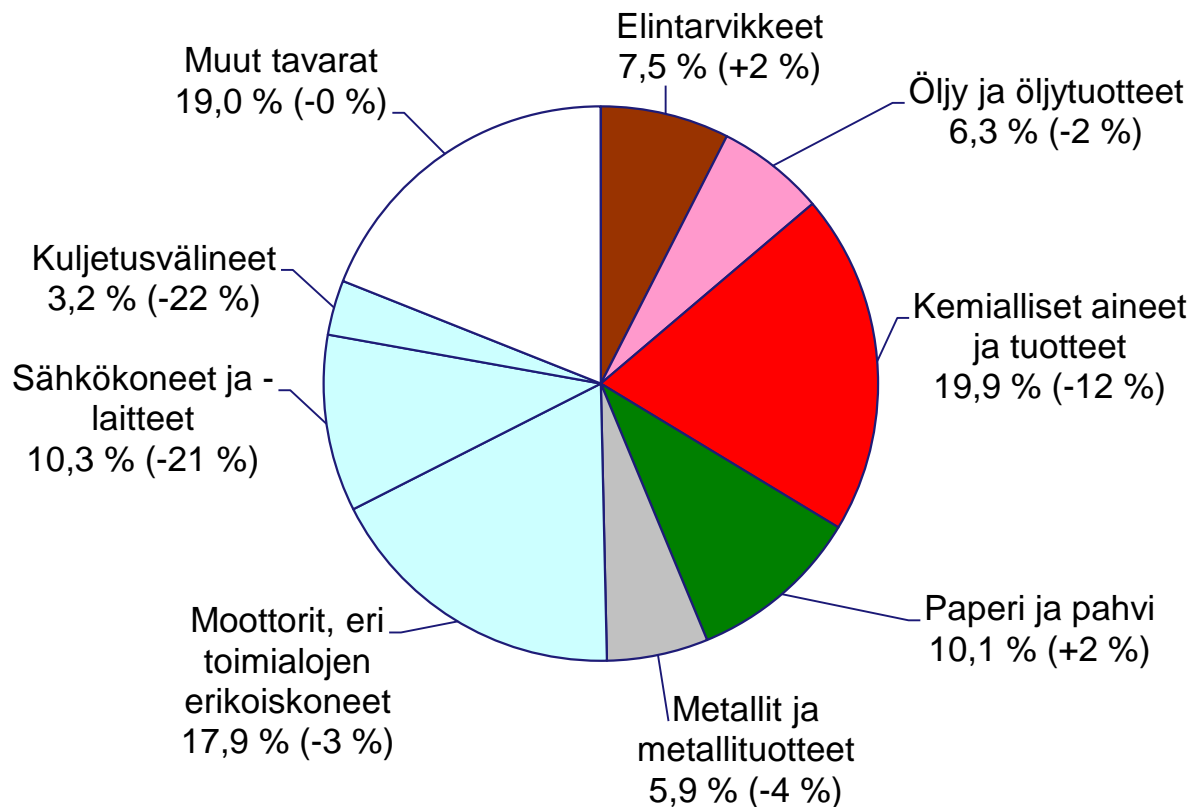


Viennin arvo Ruotsiin v. 2013(1-11)
oli 6,0 mrd. euroa (+ 2 %)



Viennin arvo Saksaan v. 2013(1-11) oli 5,0 mrd. euroa (+ 1 %)



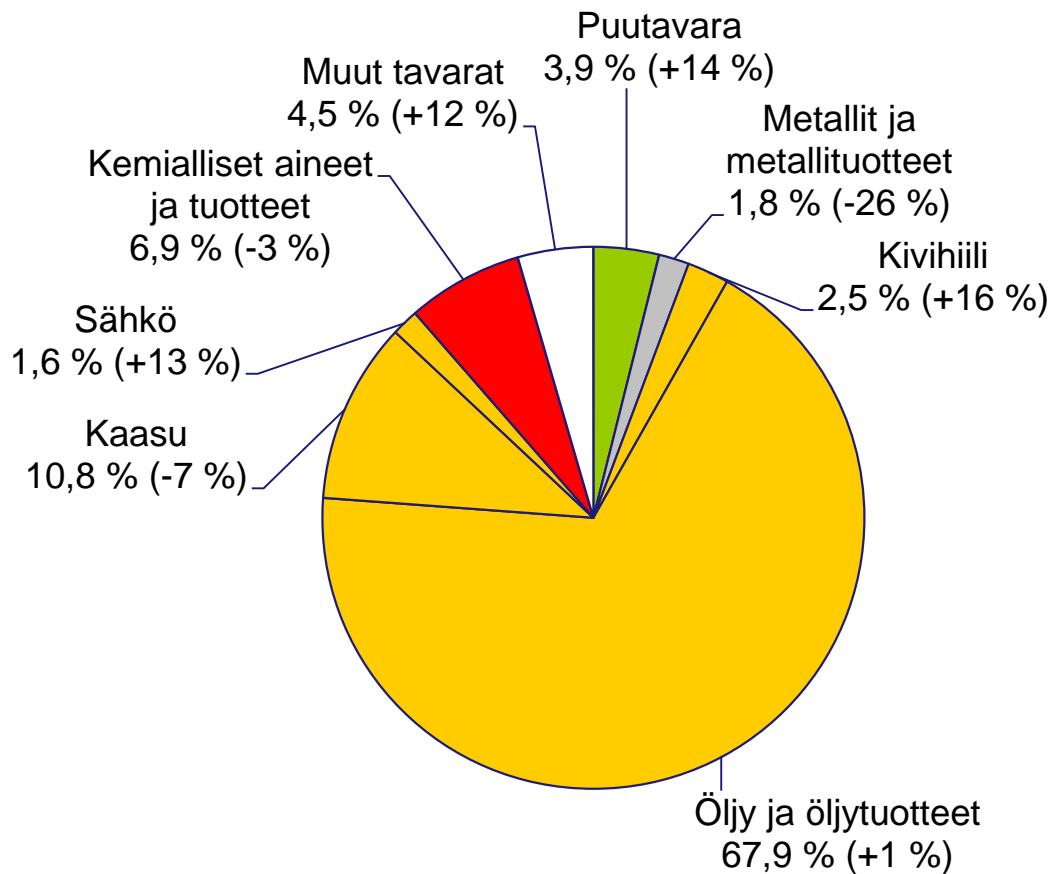


Viennin arvo Venäjälle v. 2013(1-11) oli 4,9 mrd. euroa (- 6 %)

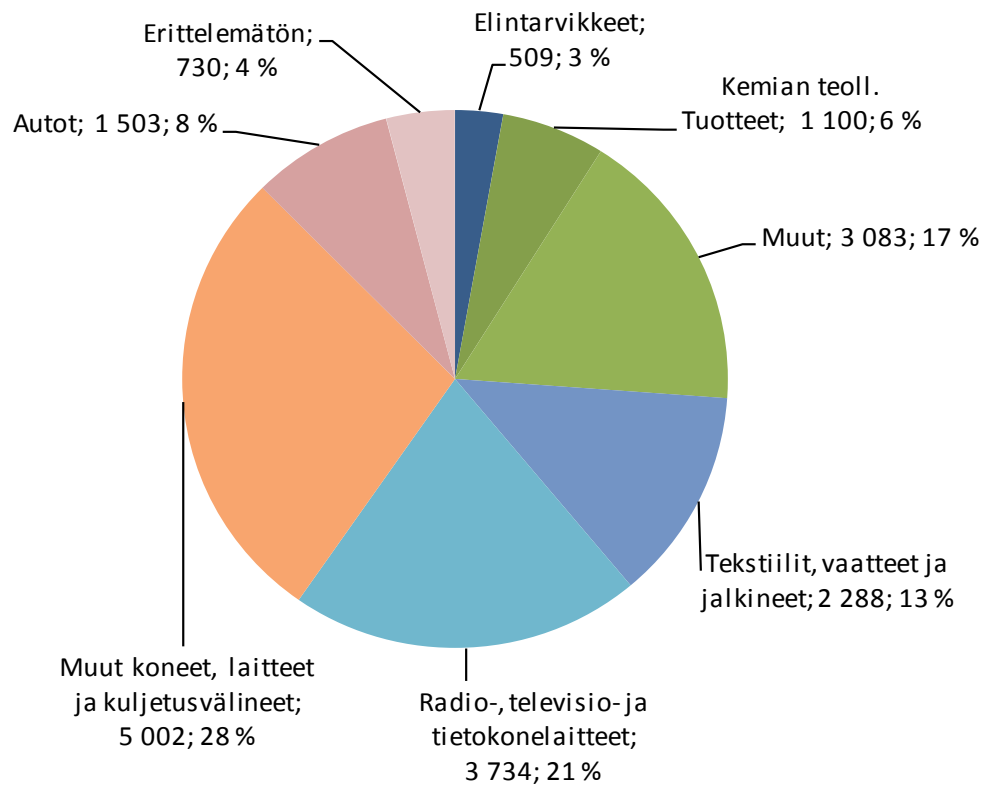


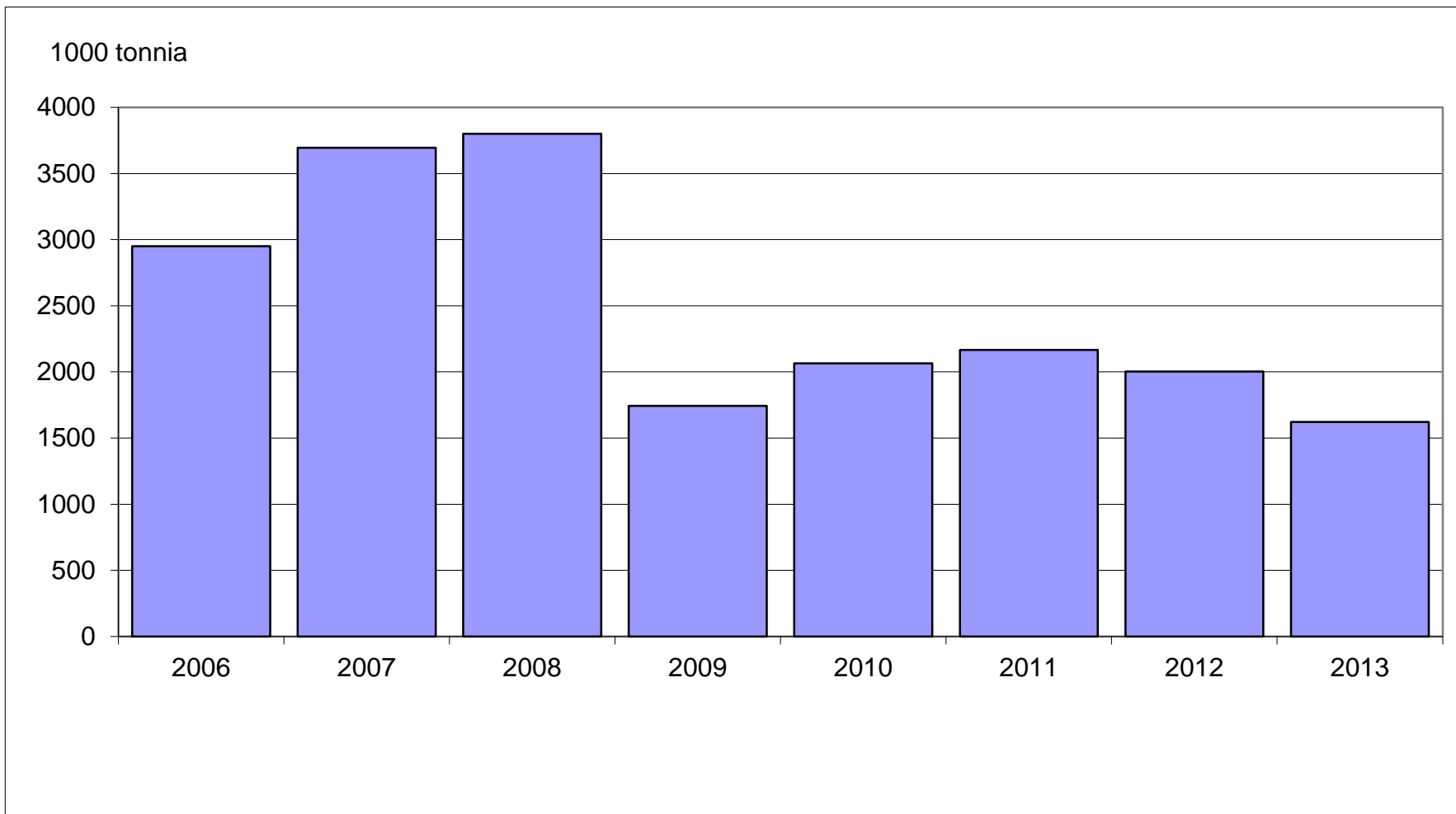
TUONTI VENÄJÄLTÄ TAVARARYHMITÄIN 2013(1-11)

Osuus tuonnista ja arvon muutos edellisen vuoden vastaavaan ajanjaksoon (%)



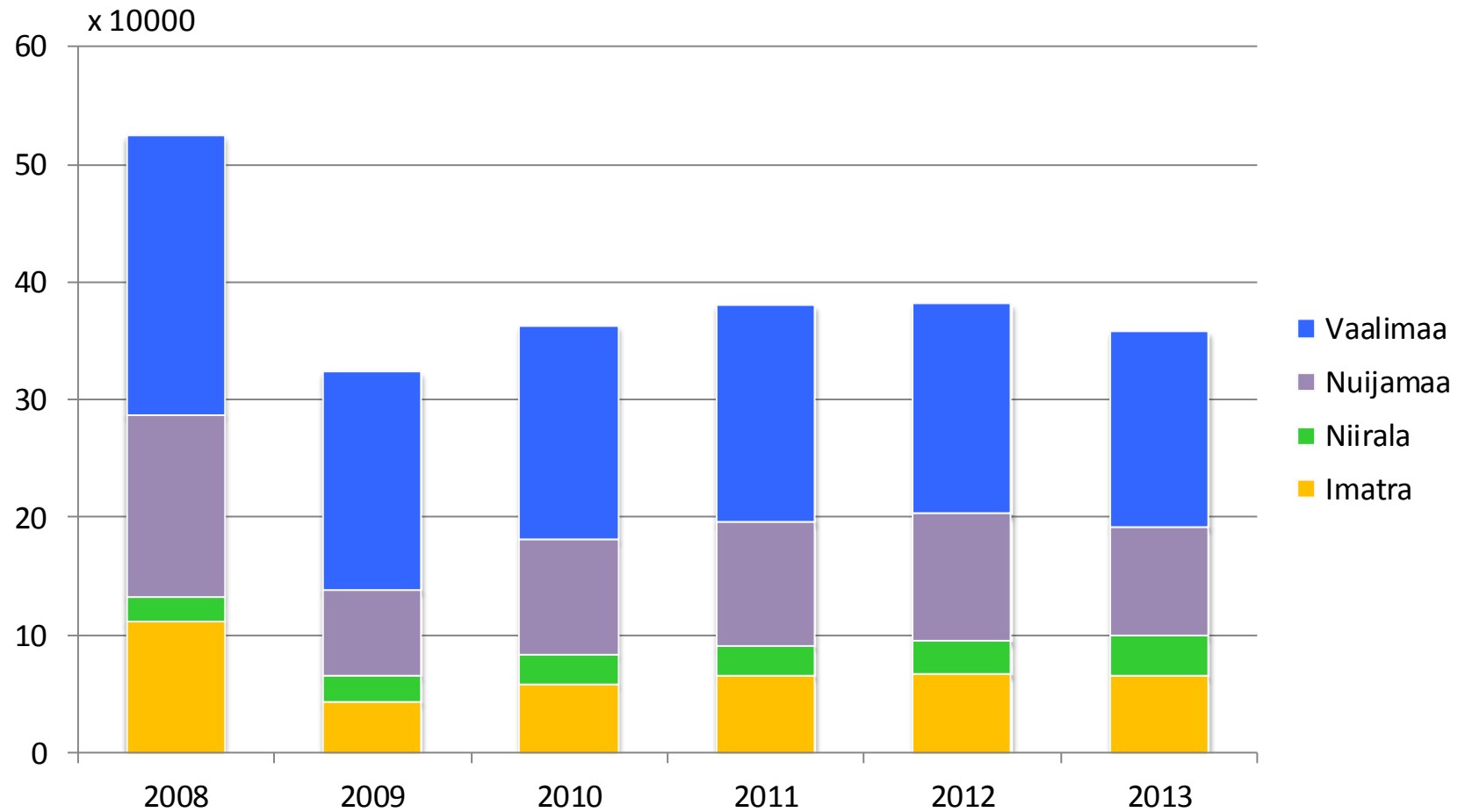
Tuonnin arvo Venäjältä v. 2013(1-11) oli 9,5 mrd. euroa (+ 0 %).
Energiatuotteiden osuus koko tuonnista Venäjältä oli 82,8 %.

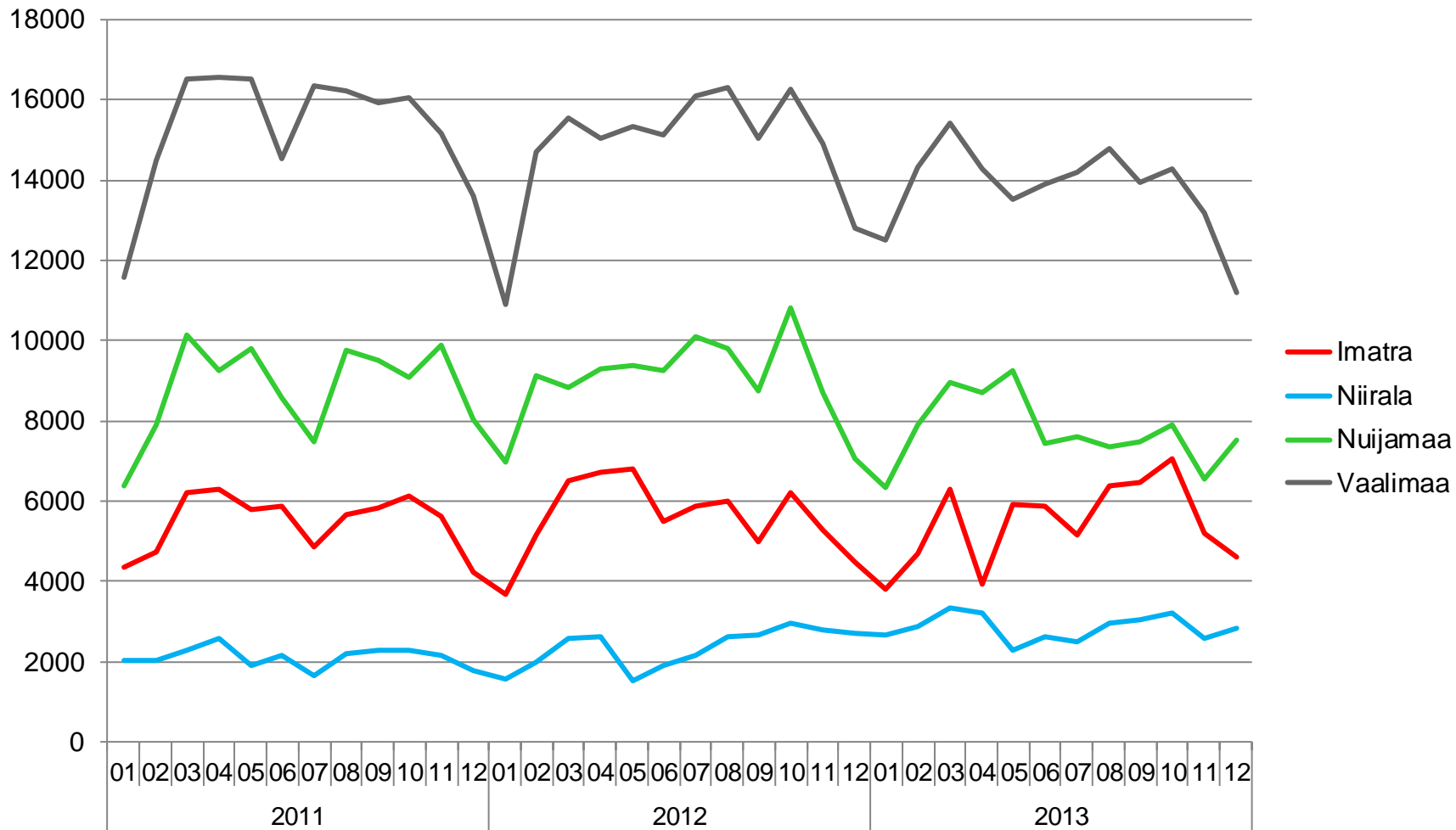


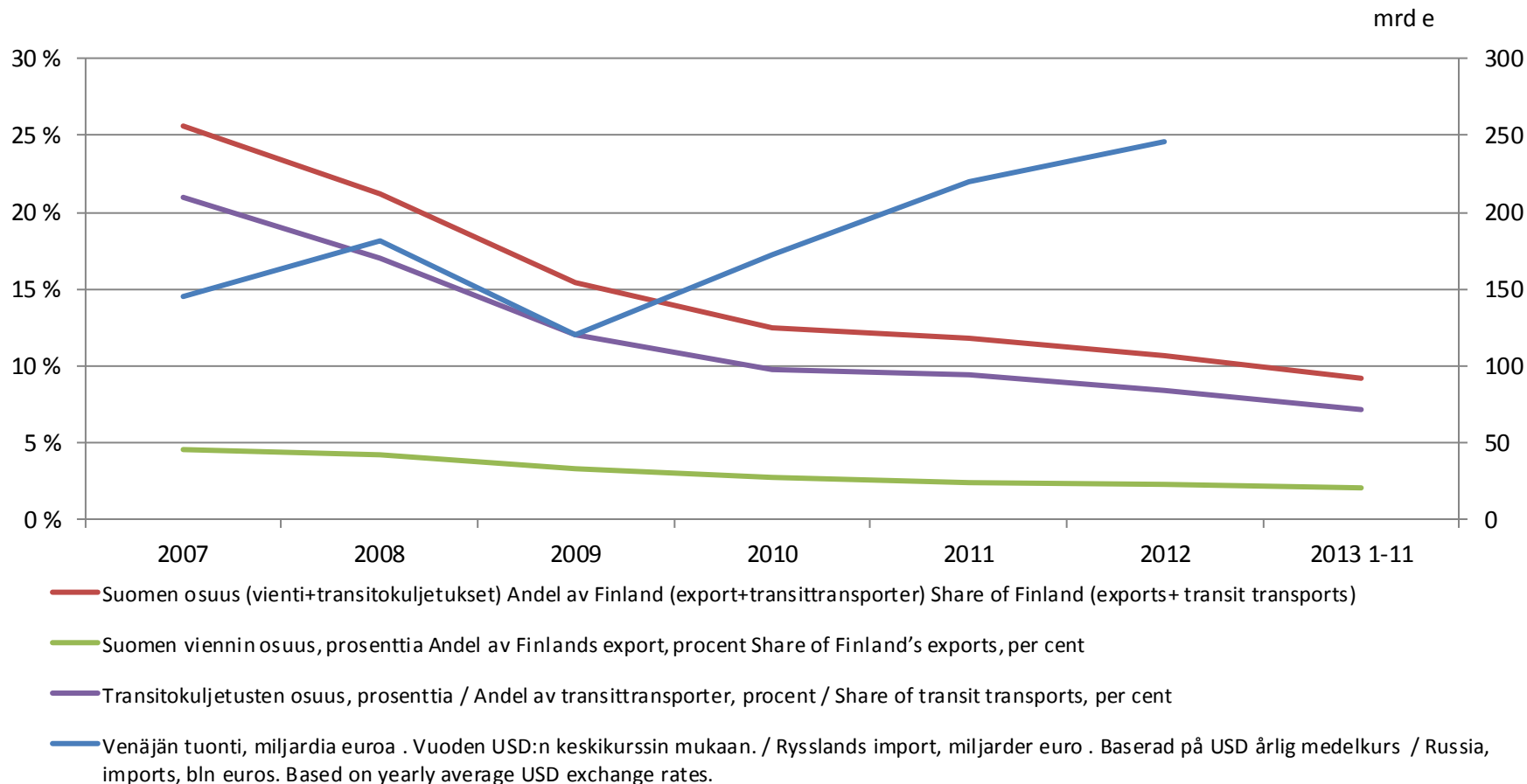




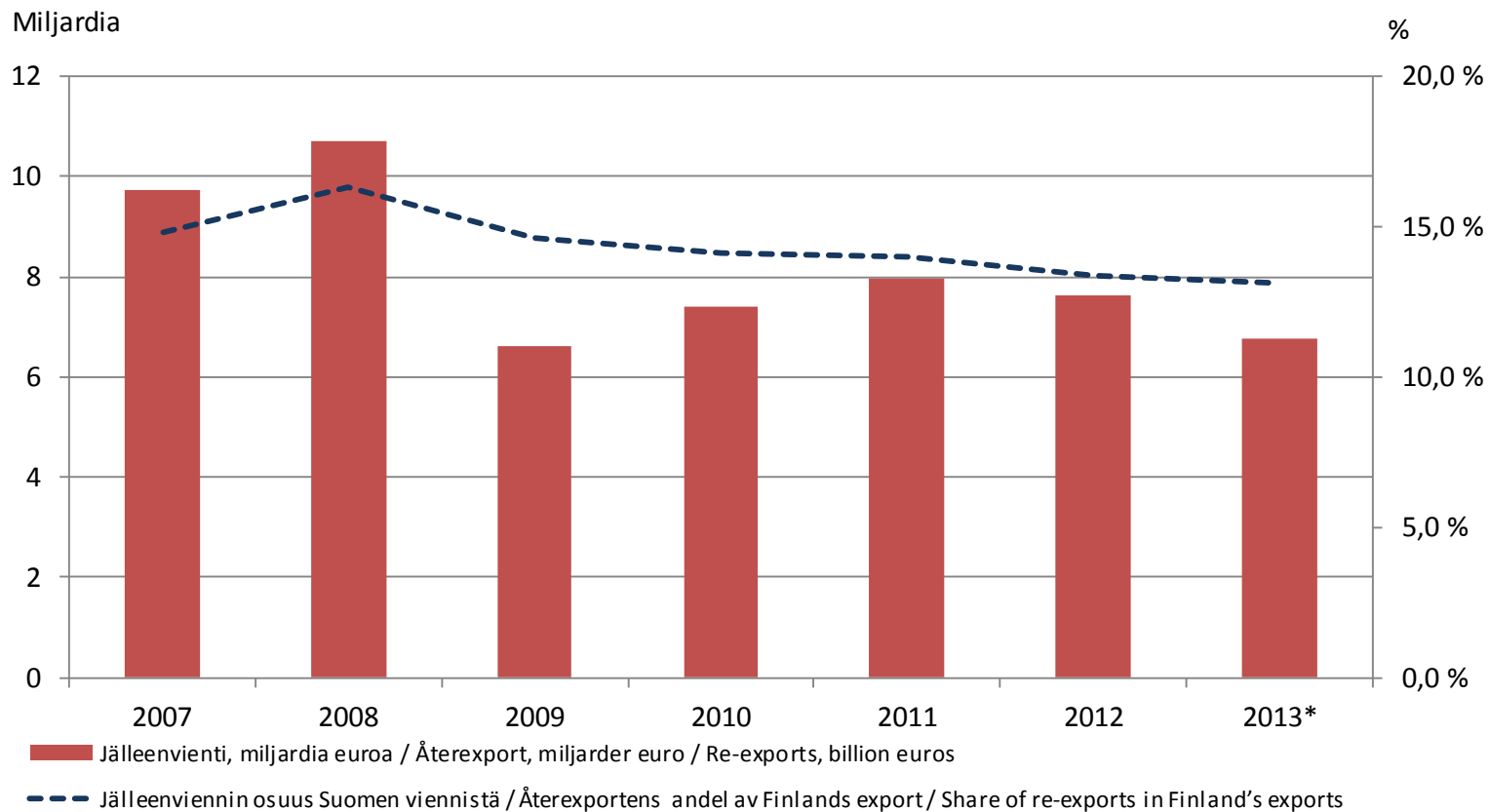
Kuormatut kuorma-autot vuosittain 2008-2013 (kpl)







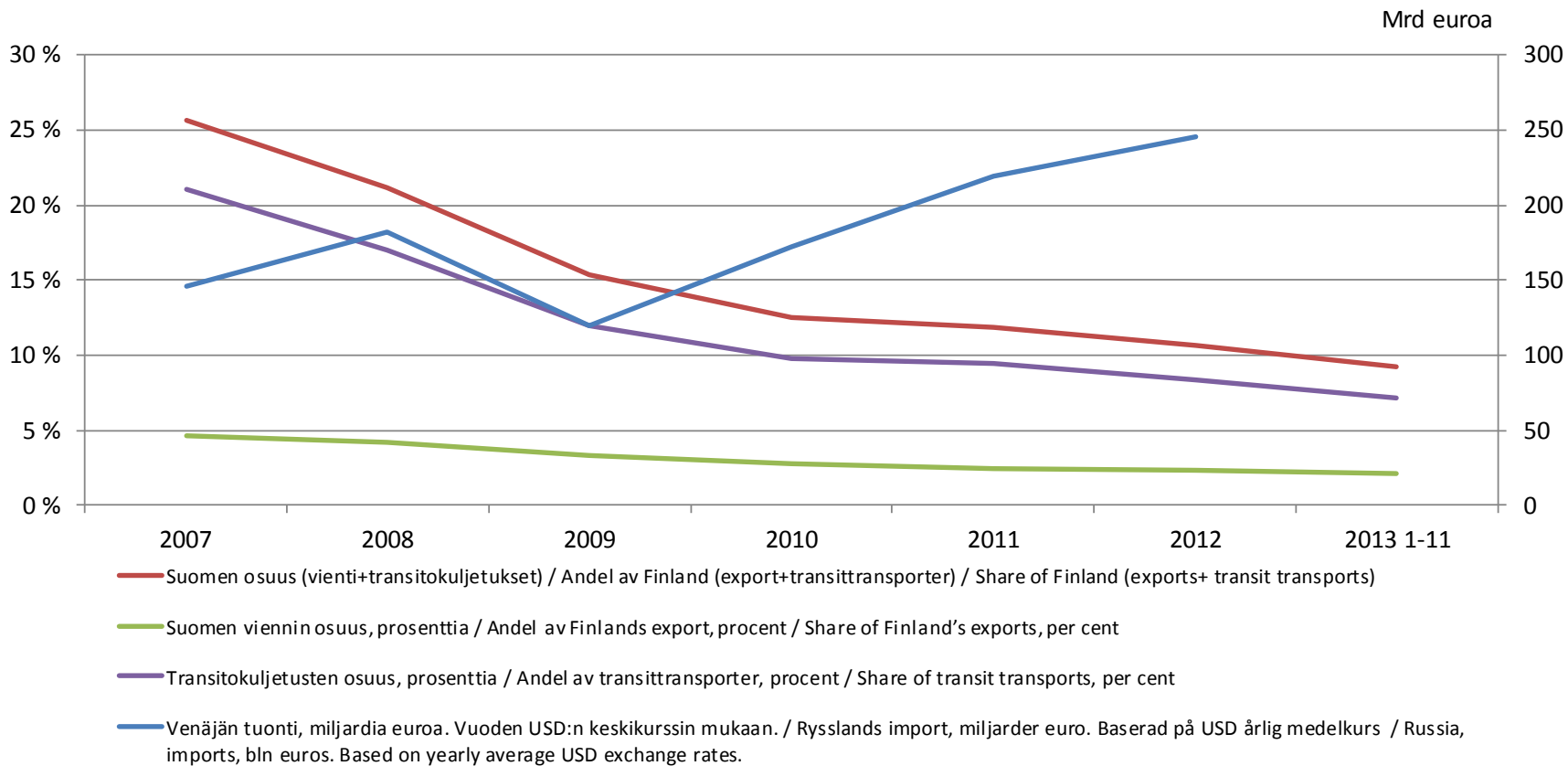
Venäjän tuonti / Rysslands import/ Russia, imports:
- Lähde / källa / source: Federal State Statistics Service



* Arvio 2013 tammi-marraskuun tietojen pohjalta



JÄLLEENVIENNIIN SUURIMMAT CN2-TASON TAVARARYHMÄT VUONNA 2007-2013



* Arvio 2013 tammi-marraskuun tietojen pohjalta