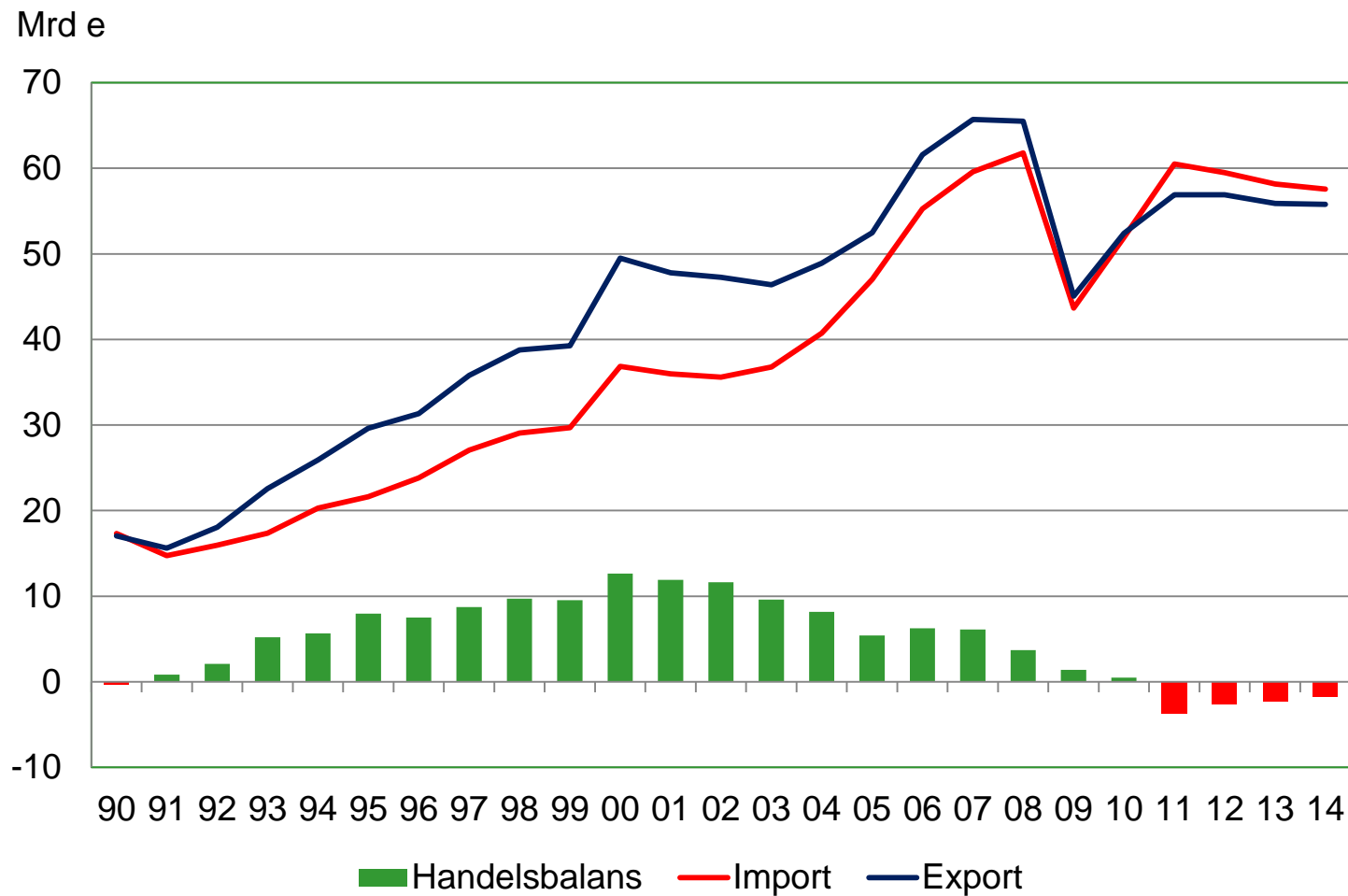
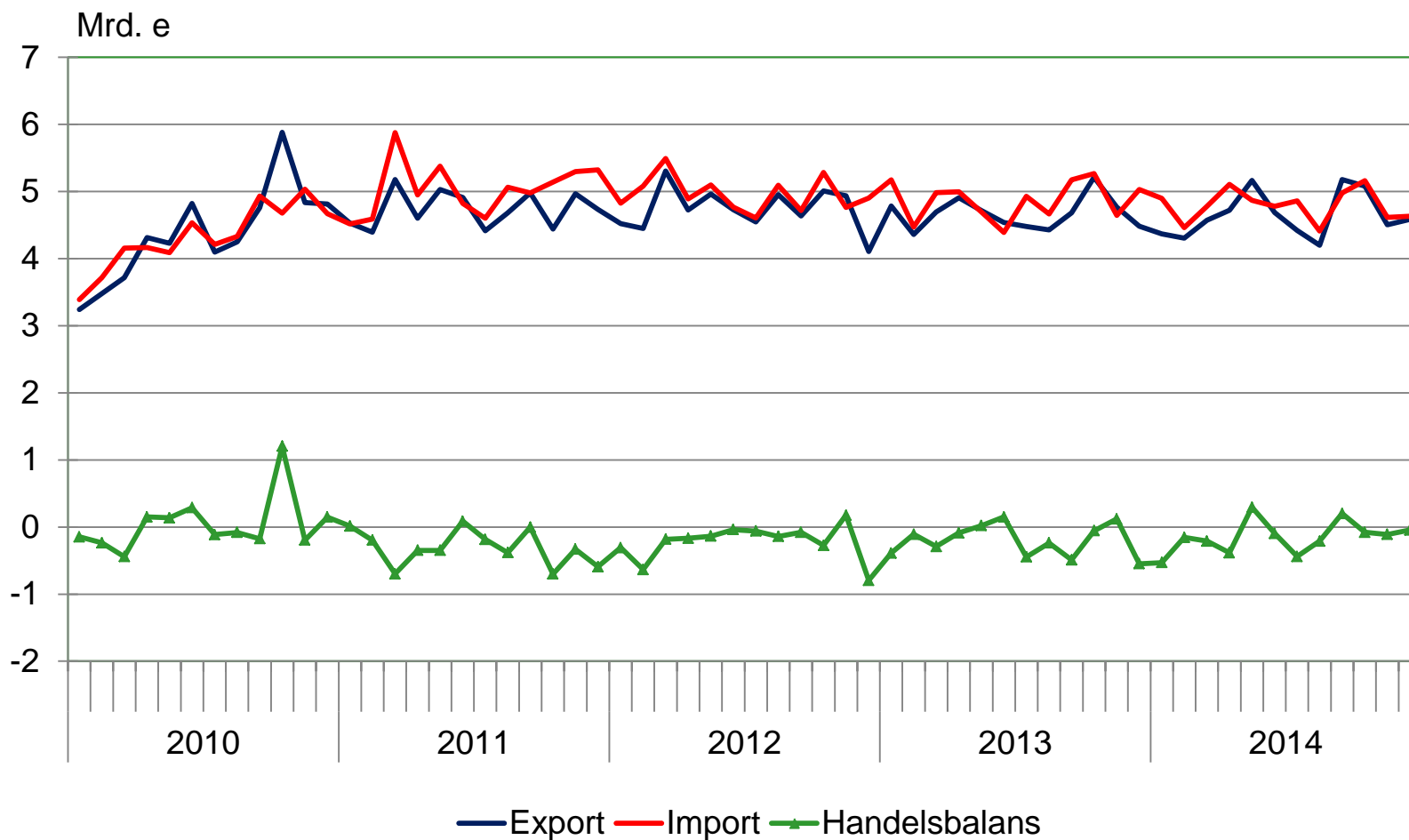


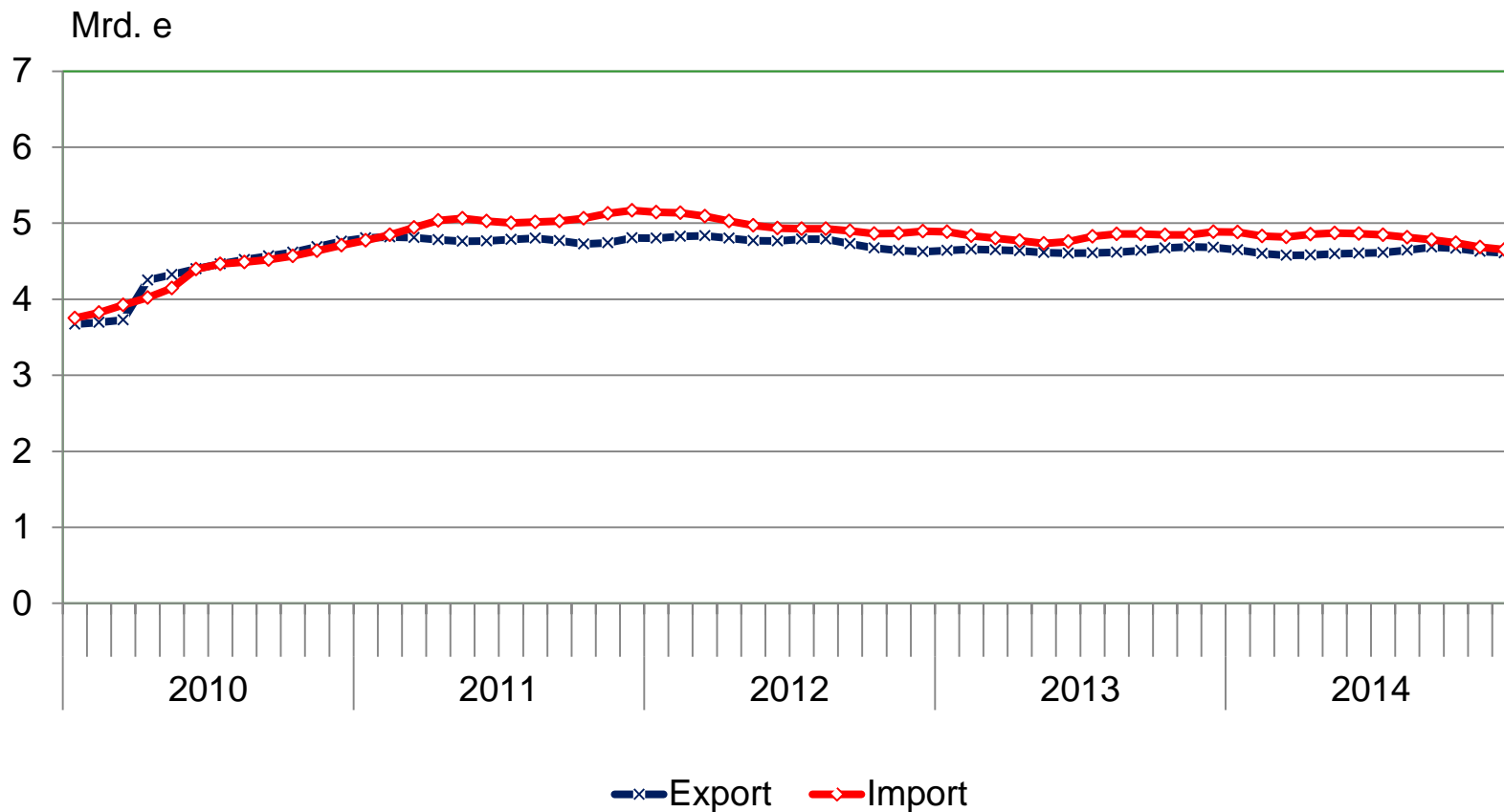


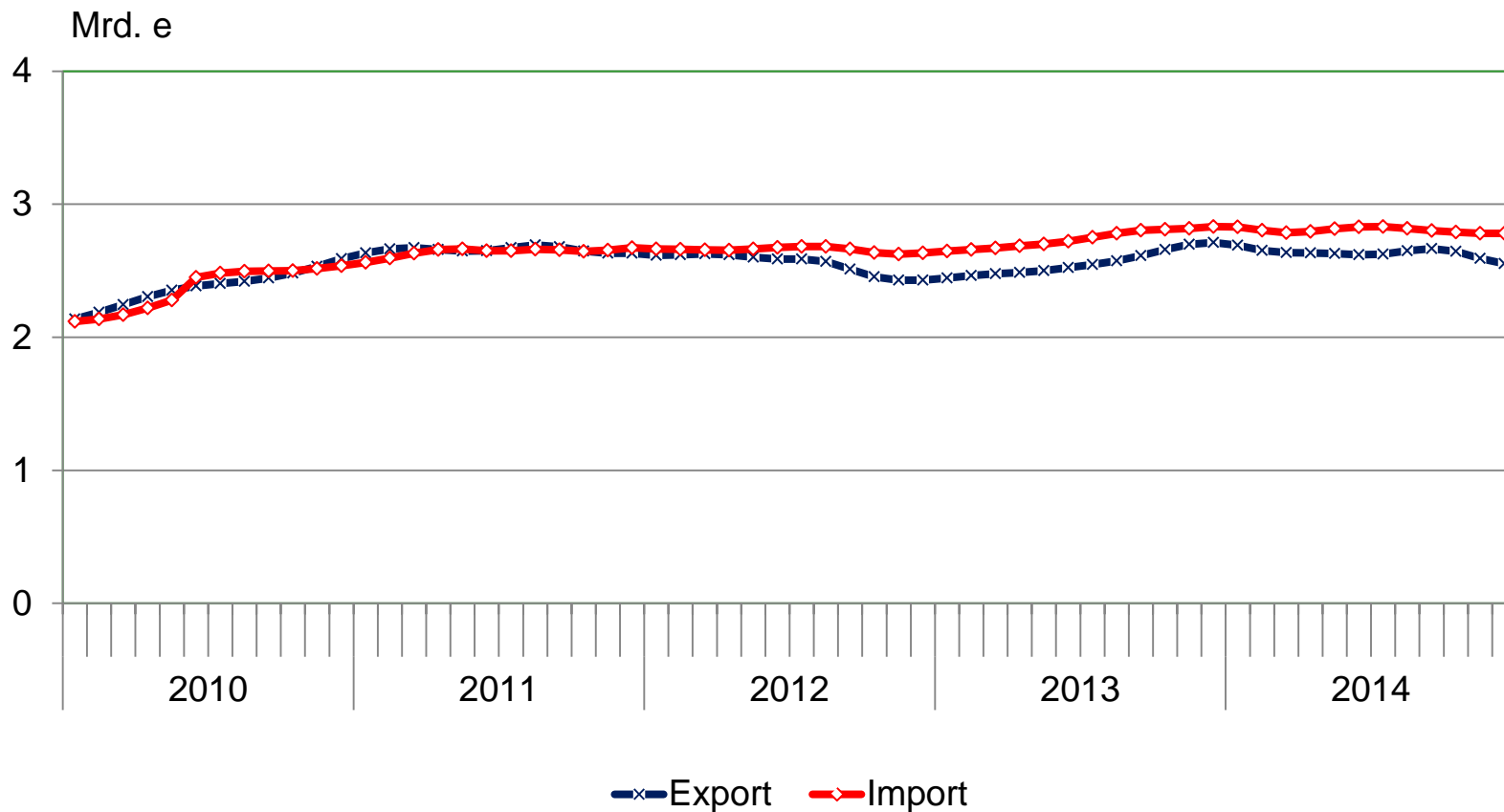
Finlands utrikeshandel 2014

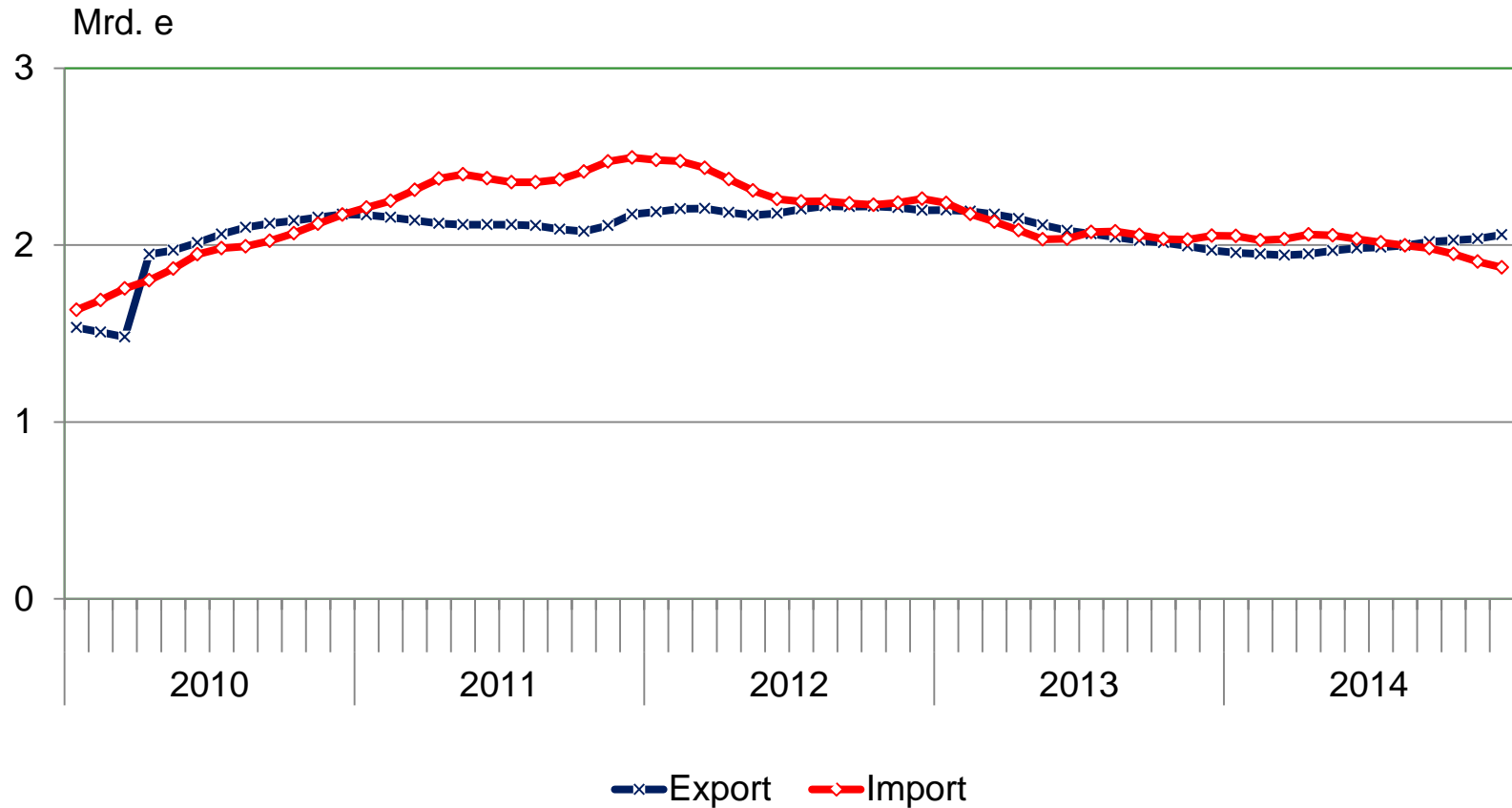
Figurer och diagram

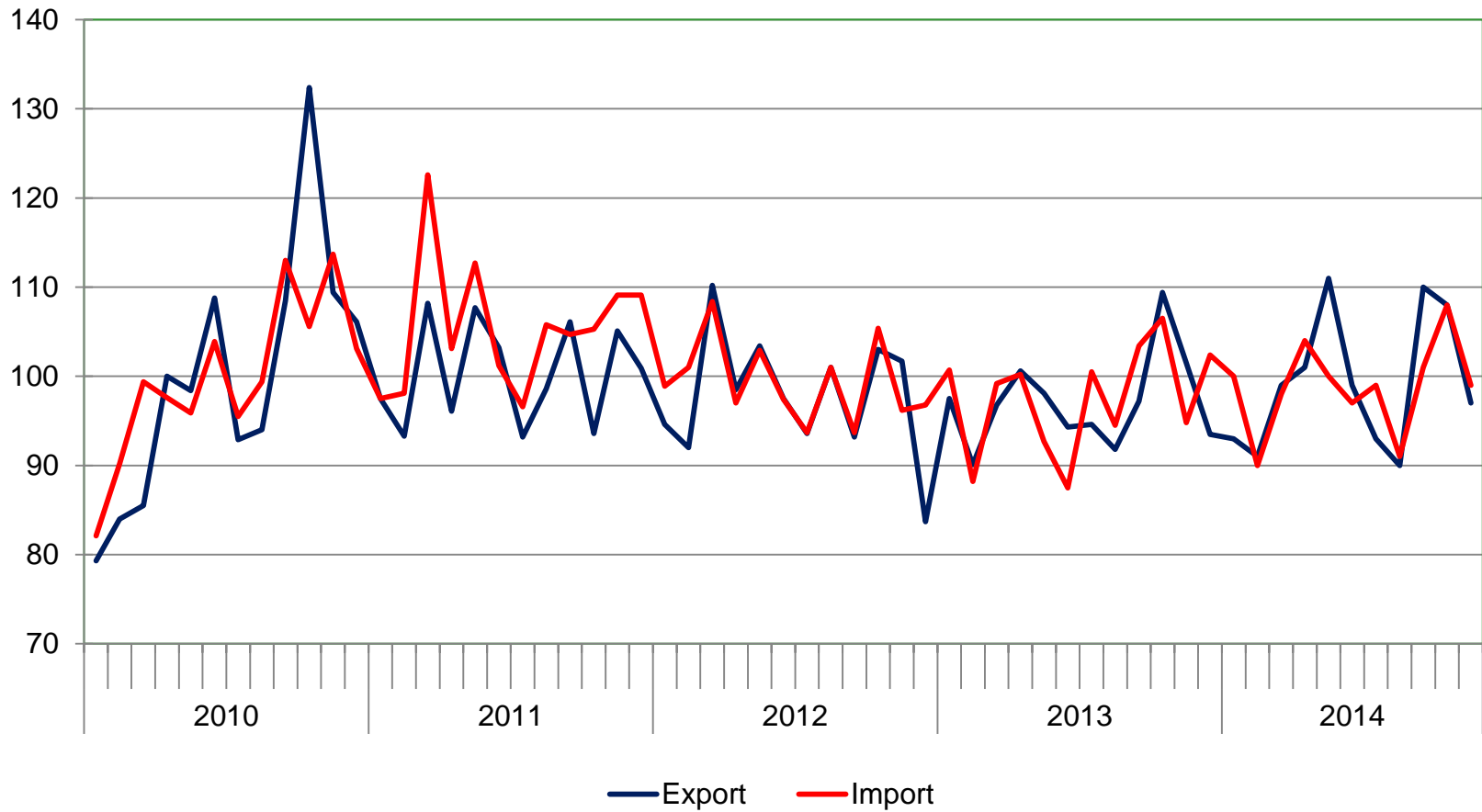


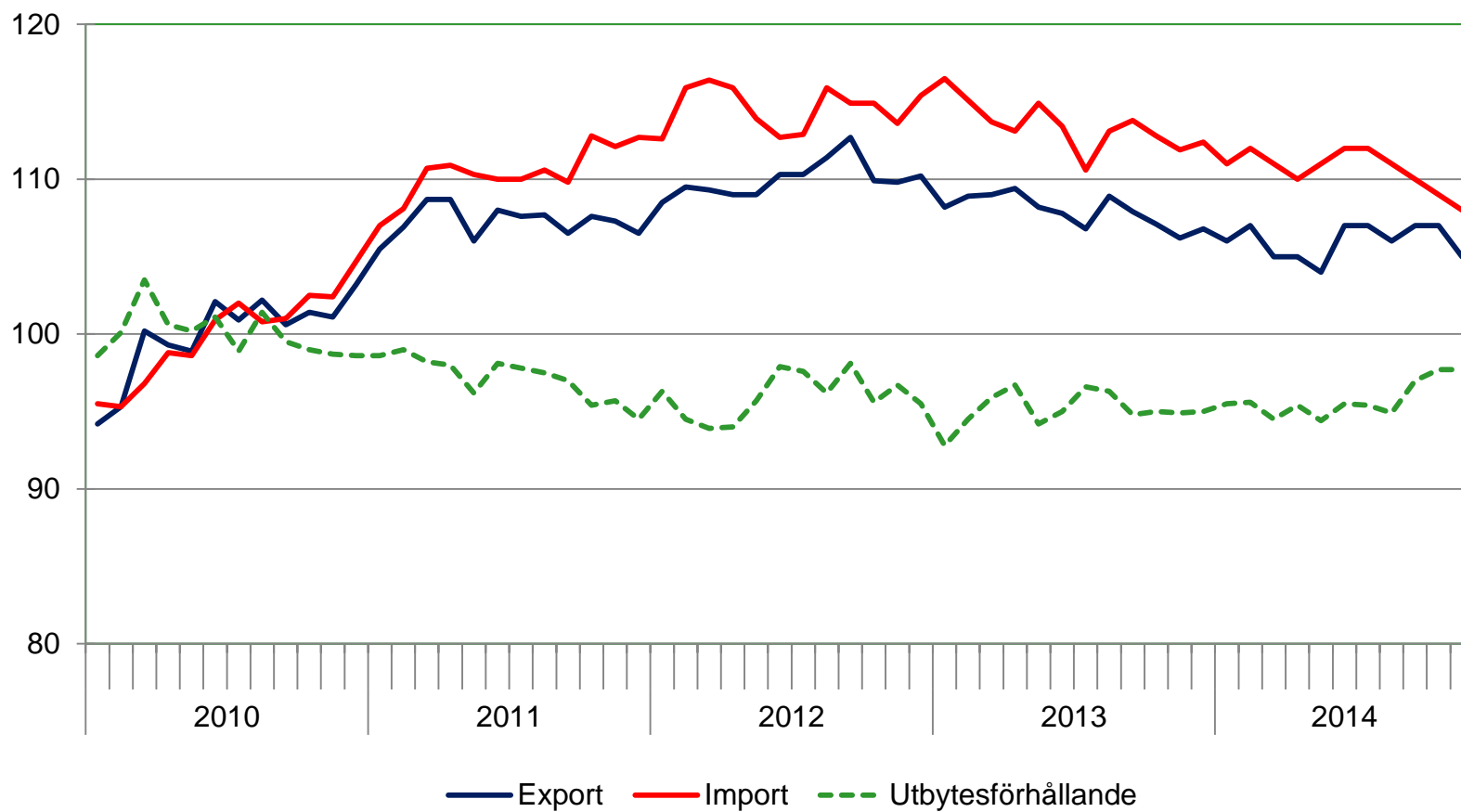


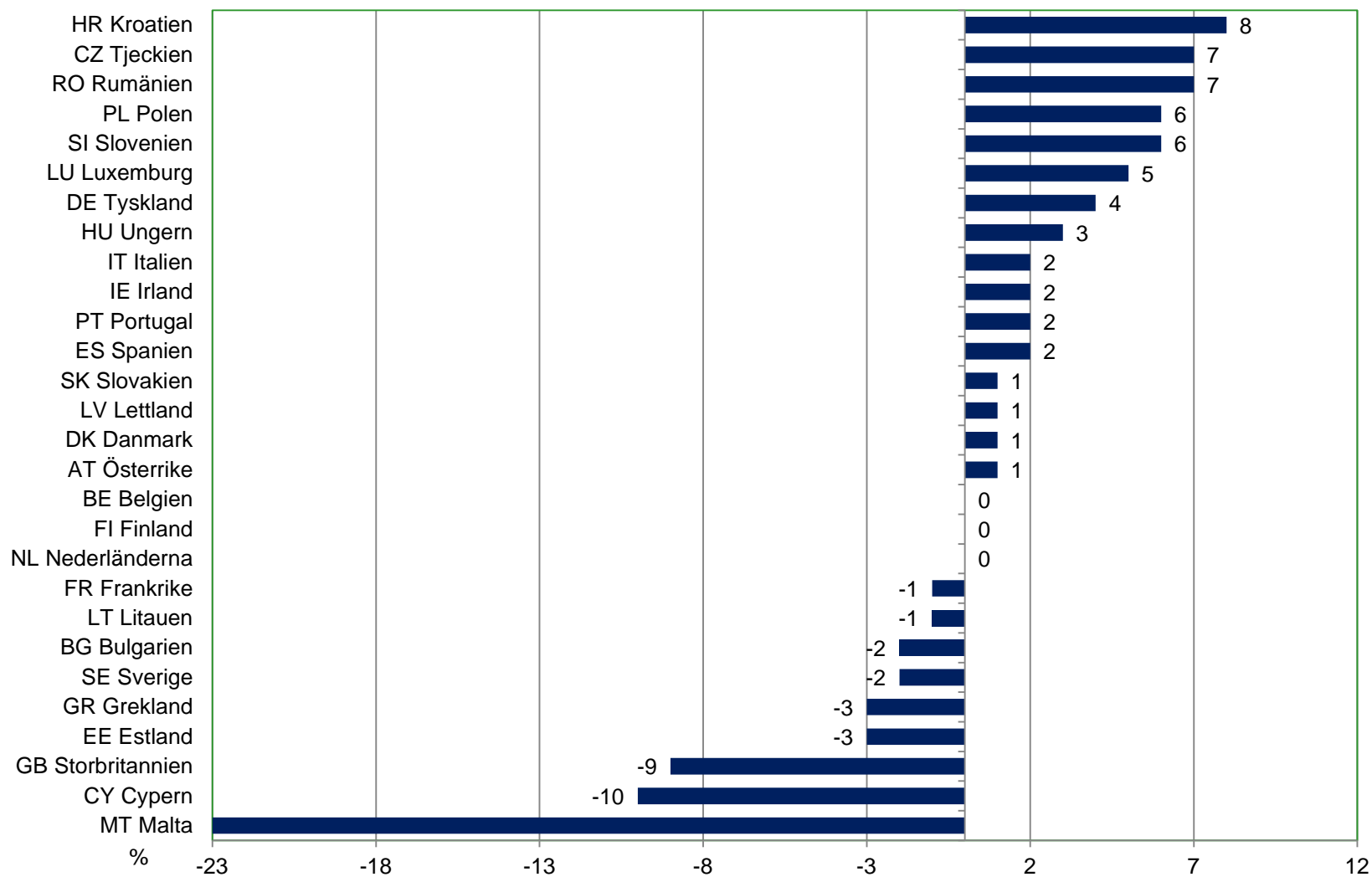


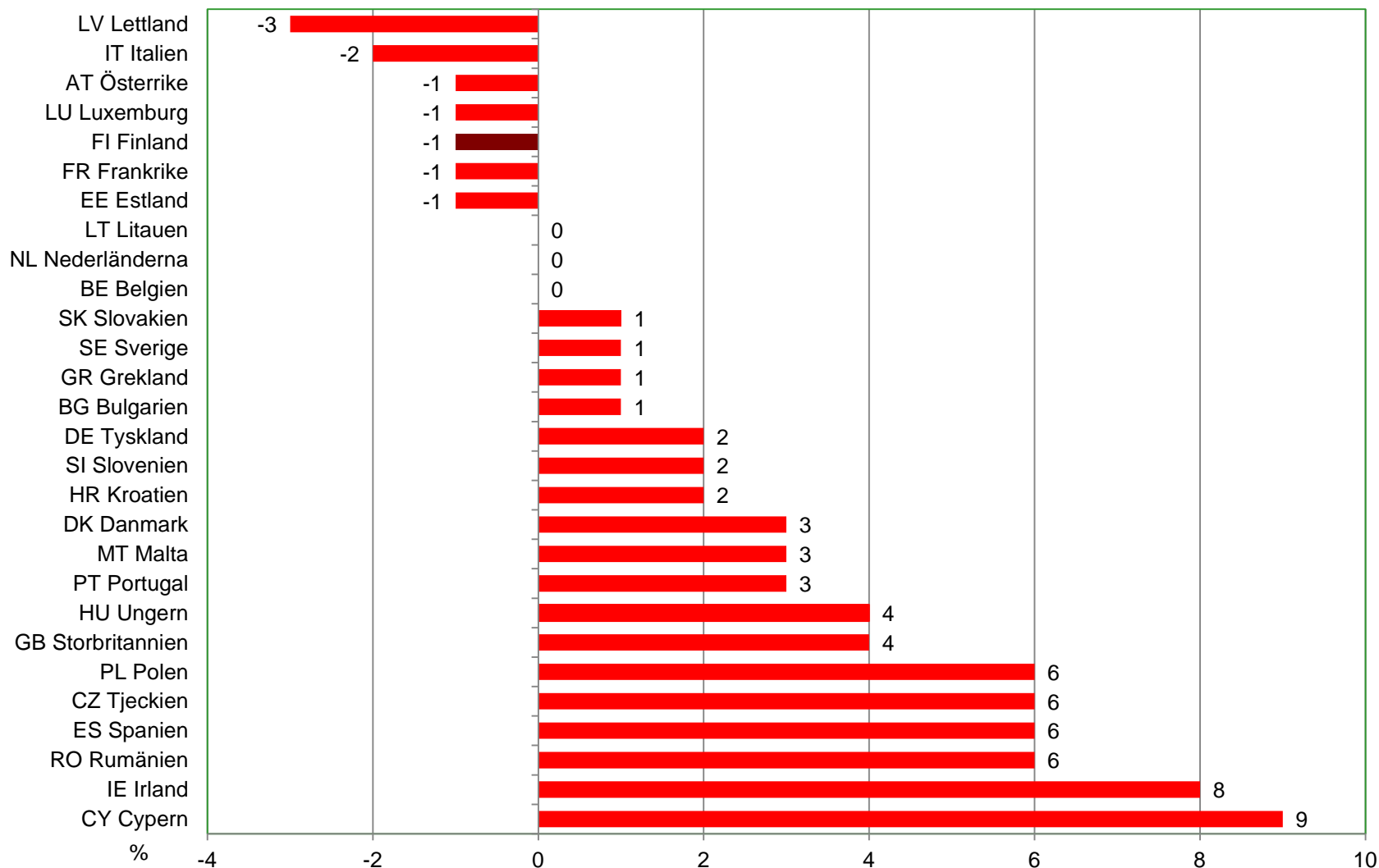


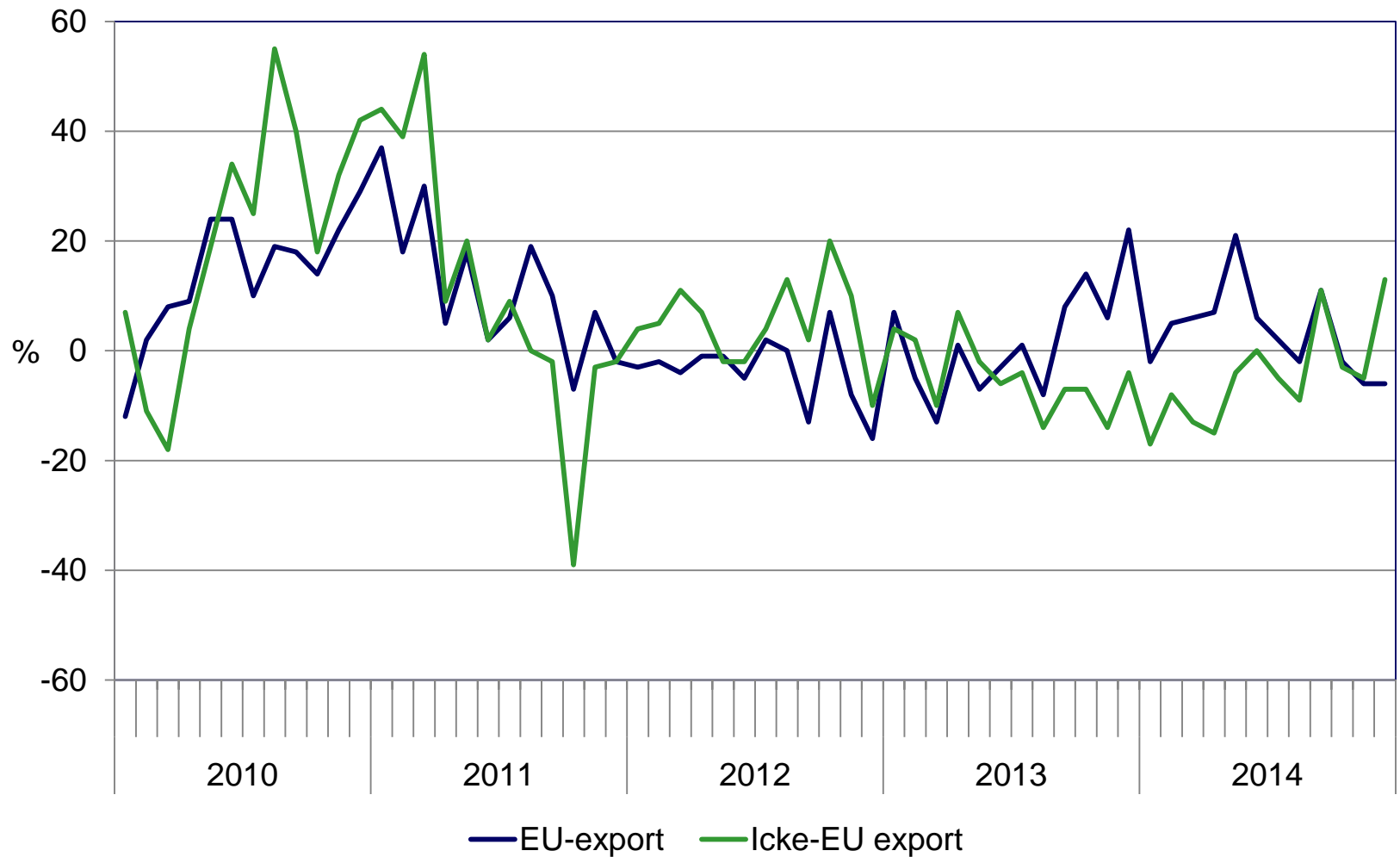


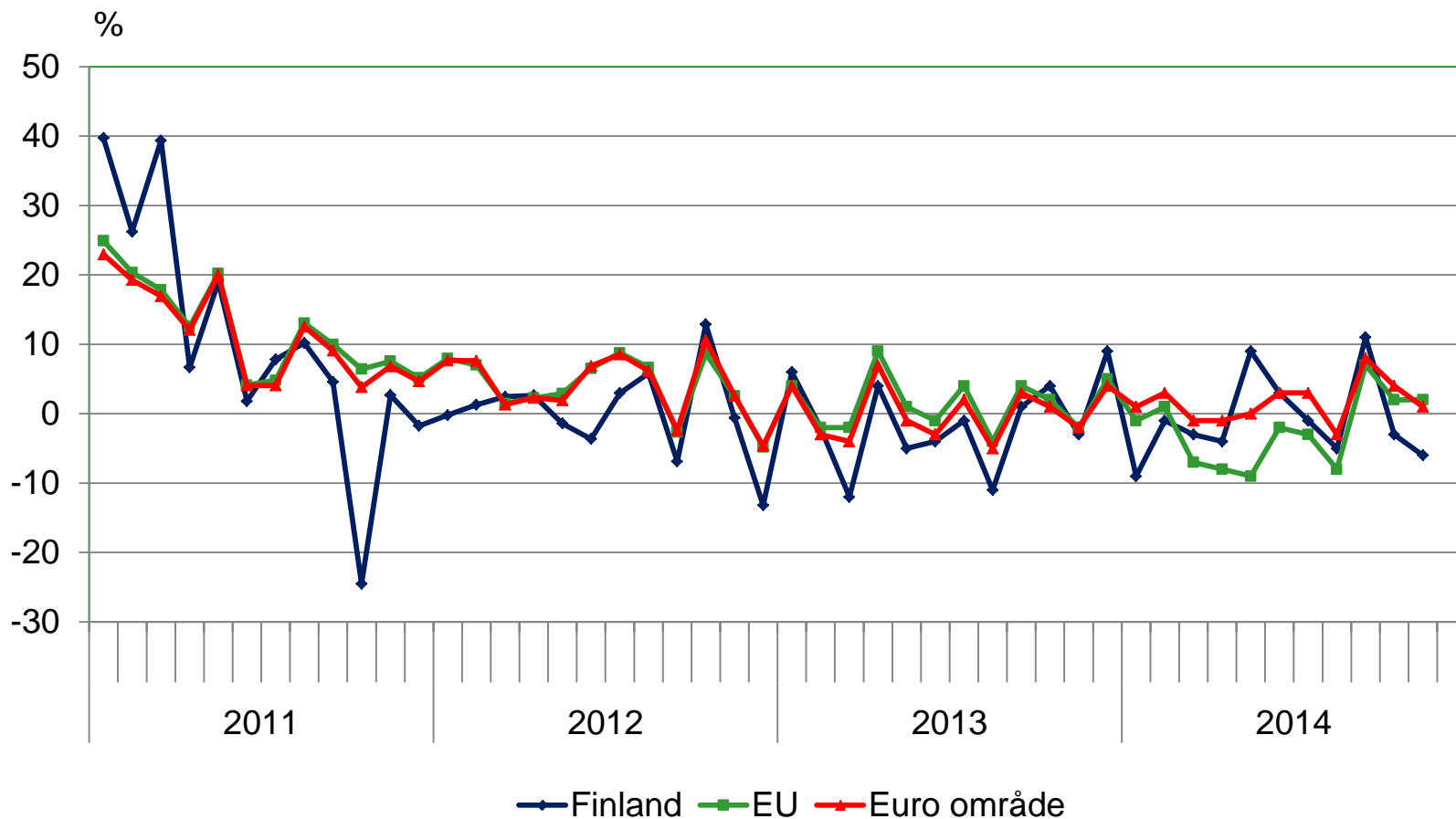




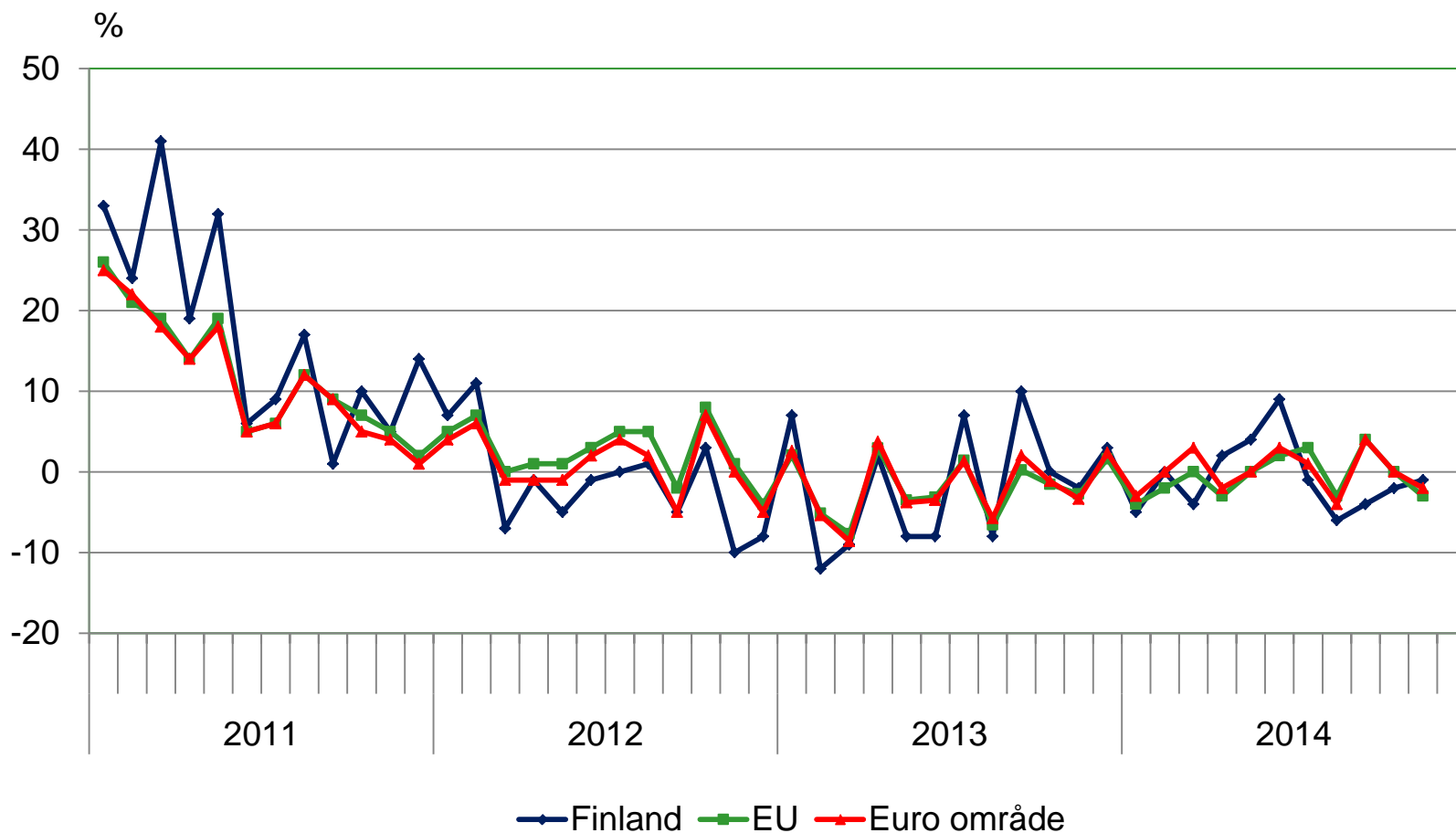




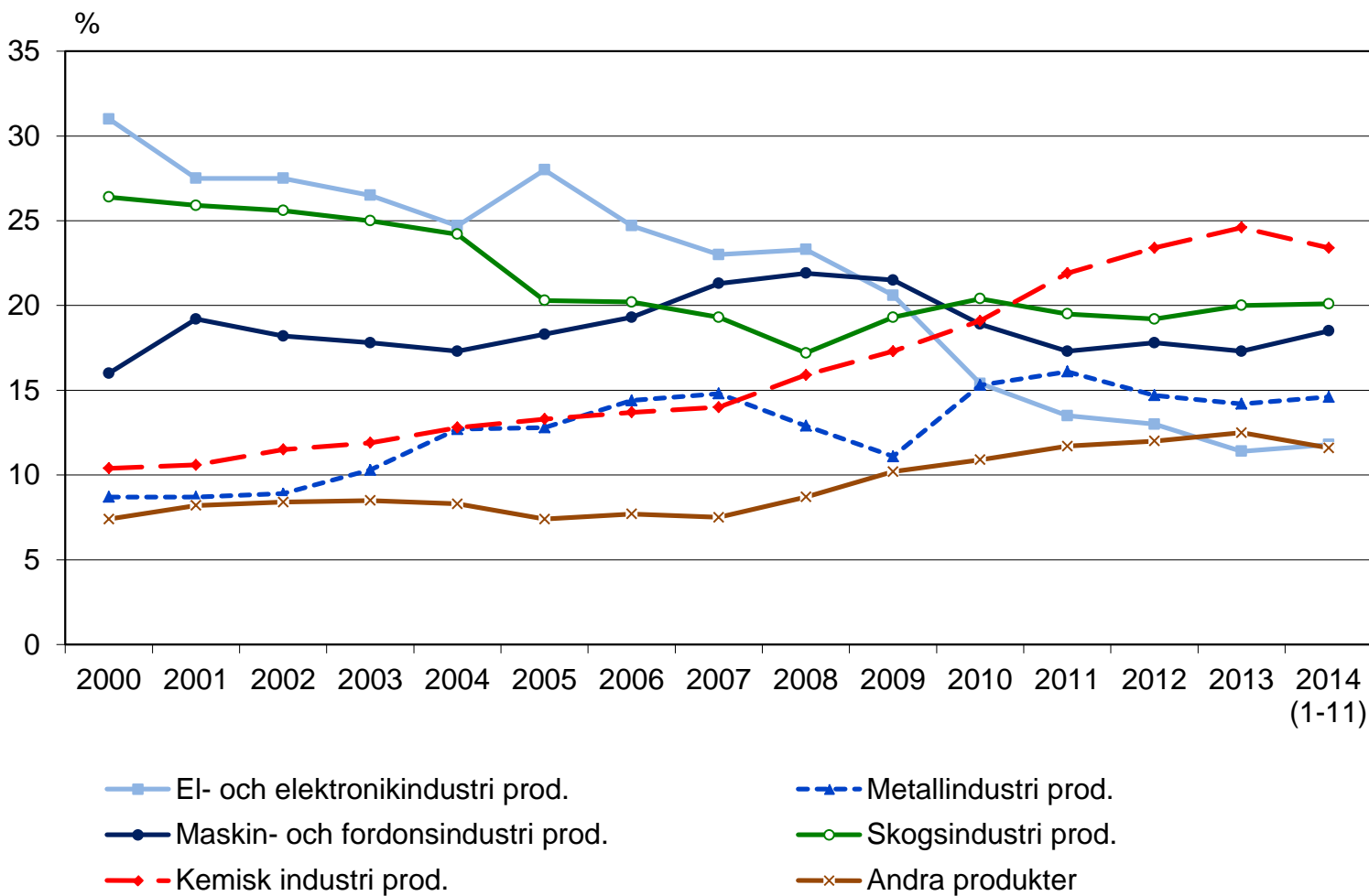


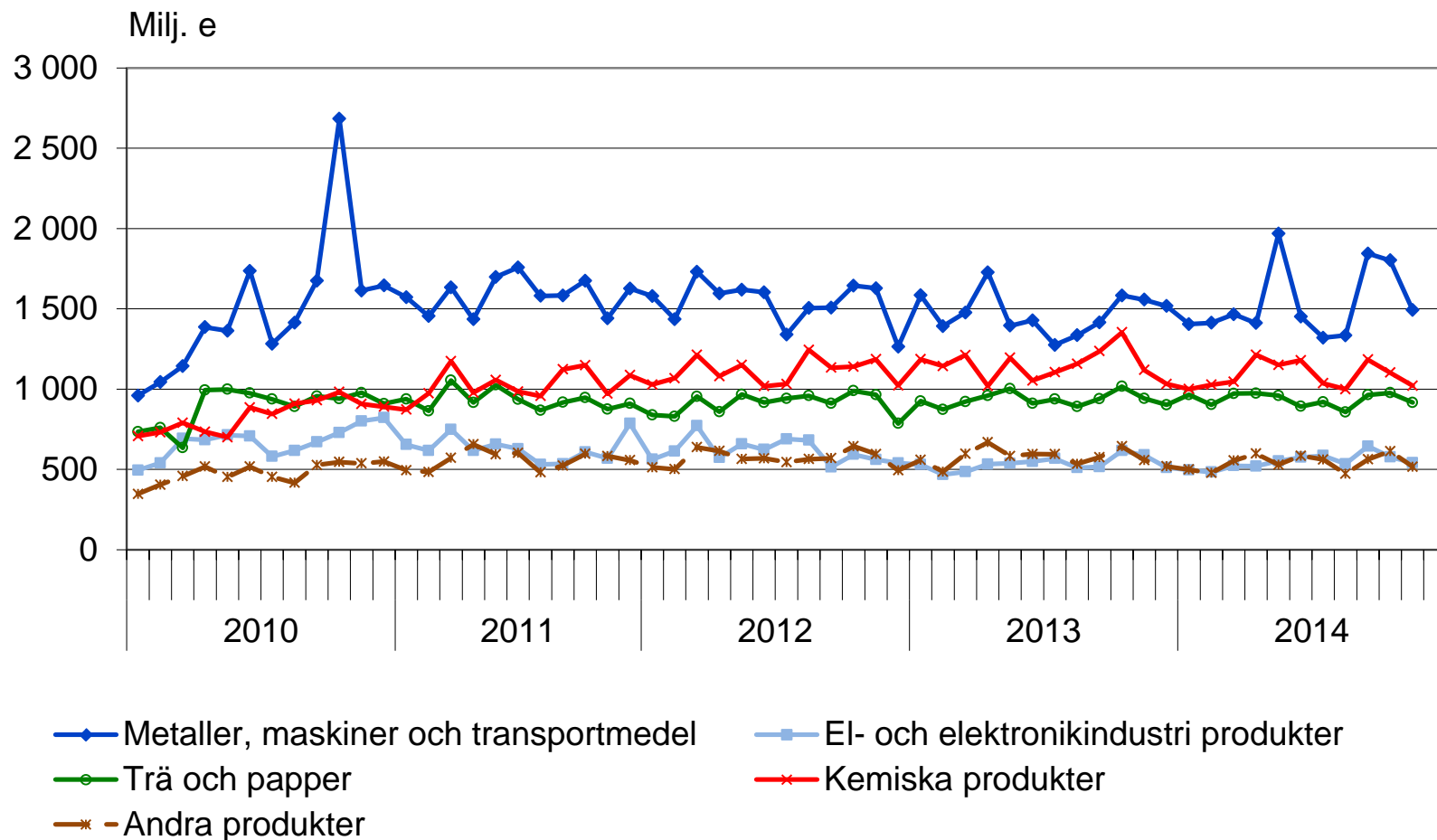


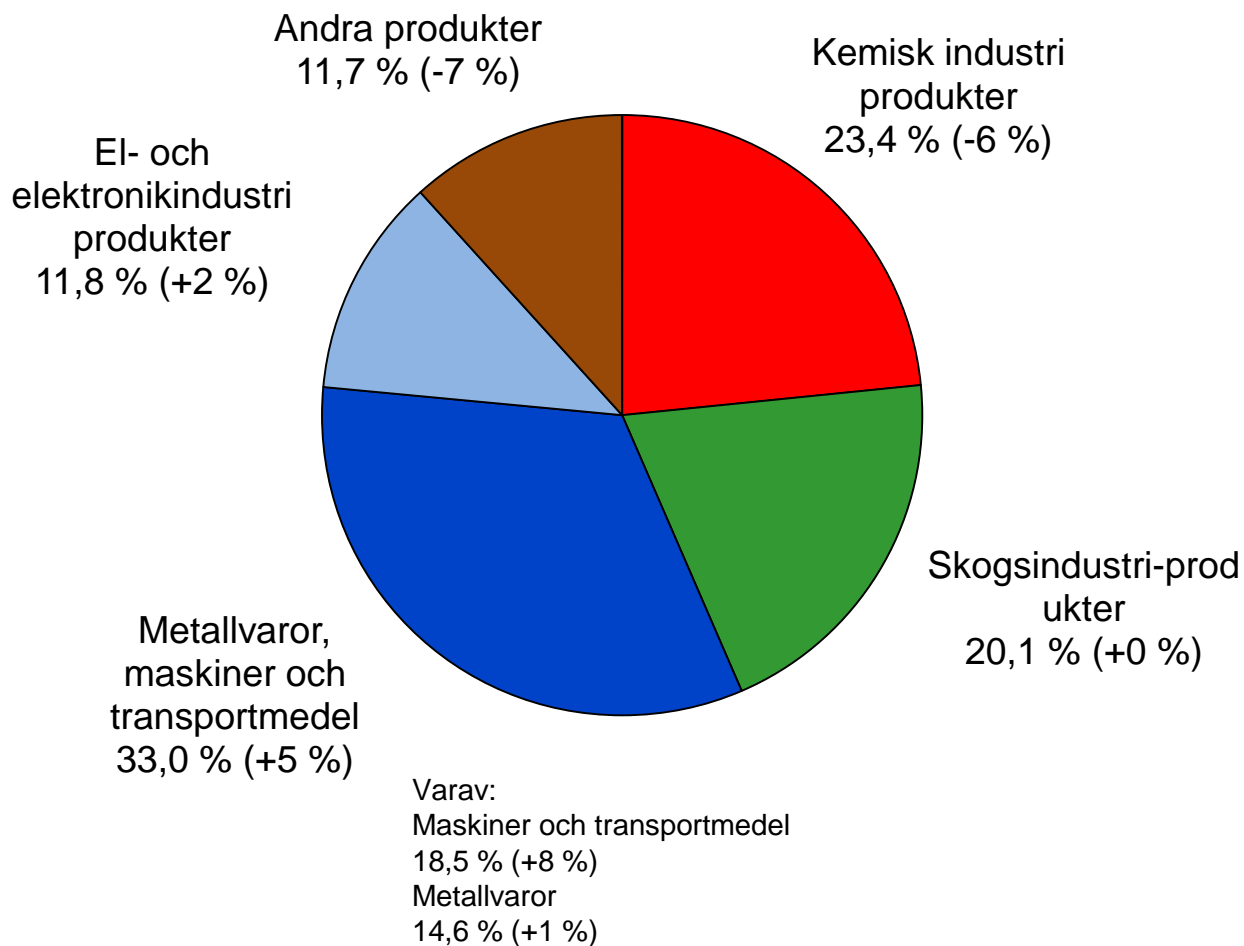
EU och euroområde export: Källa Eurostat Newsrelease

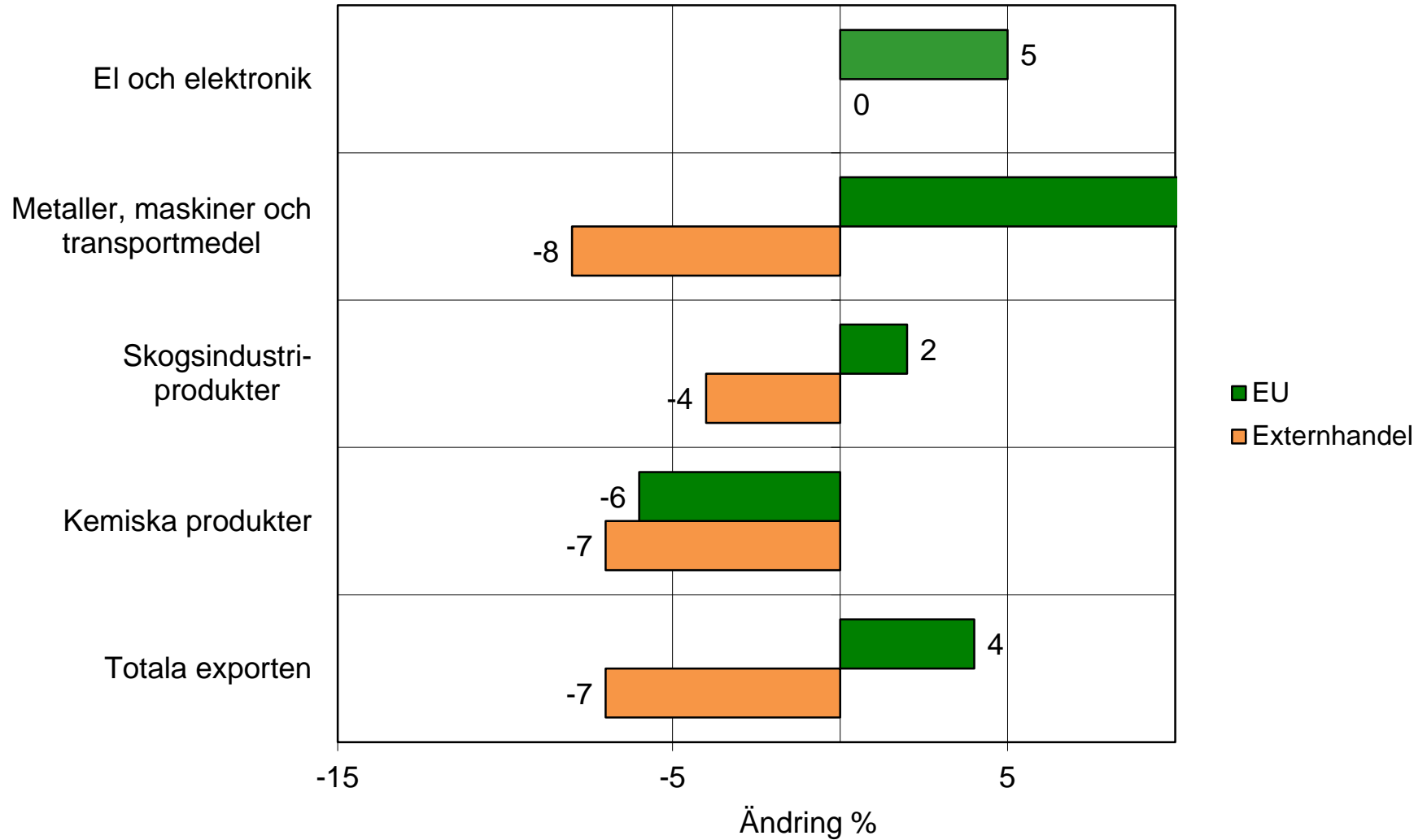


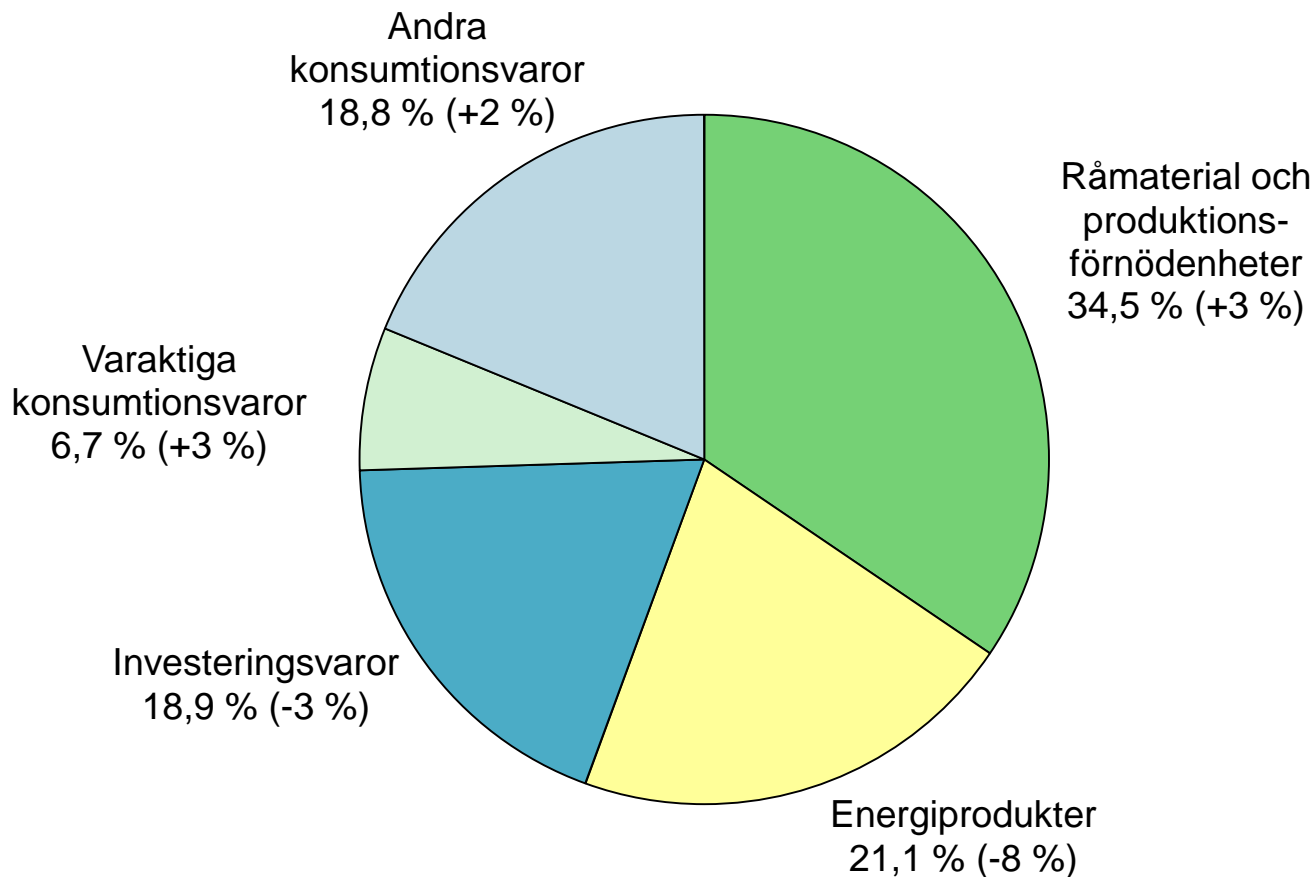
EU och euroområde import: Källa Eurostat Newsrelease

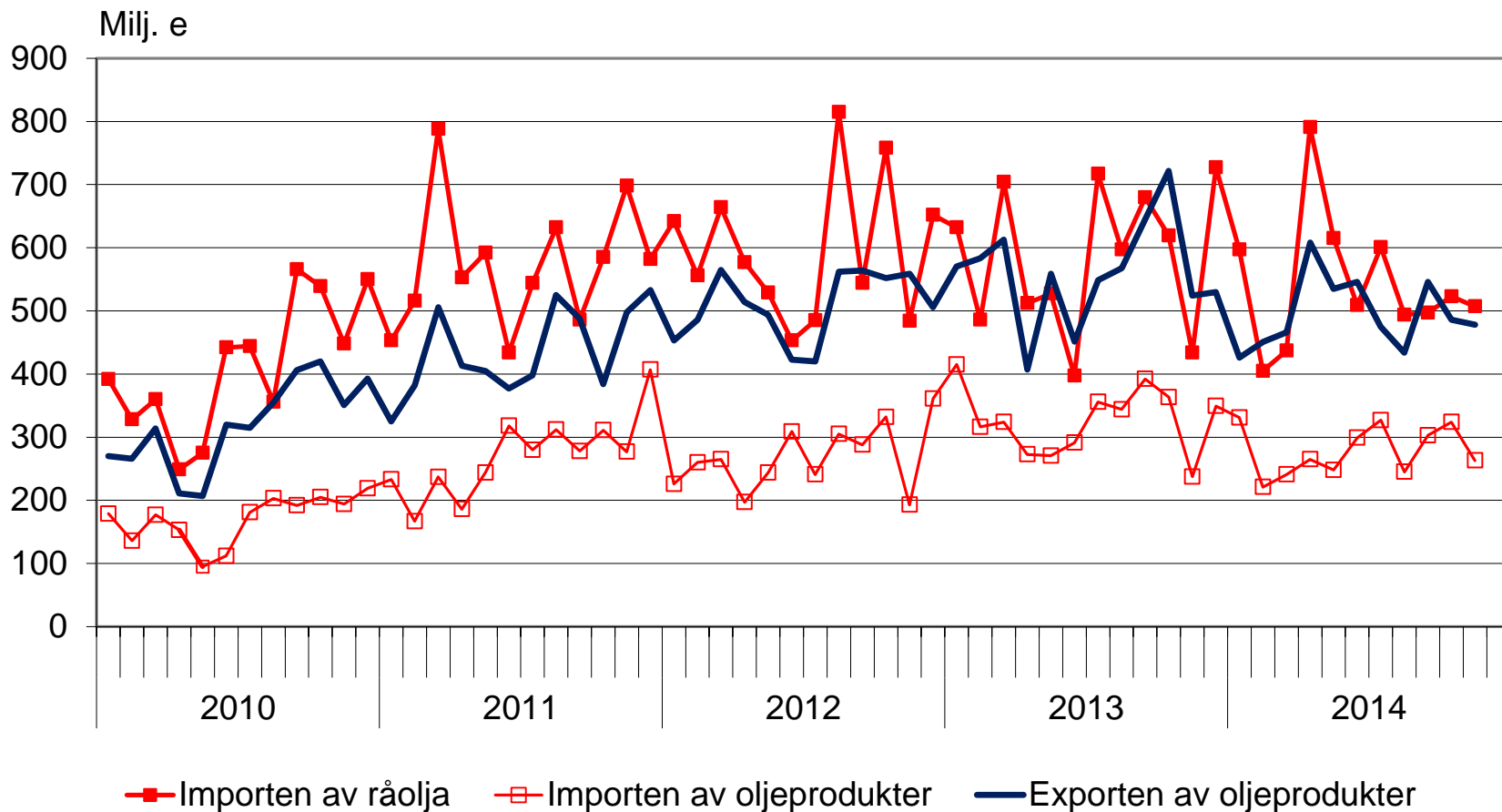






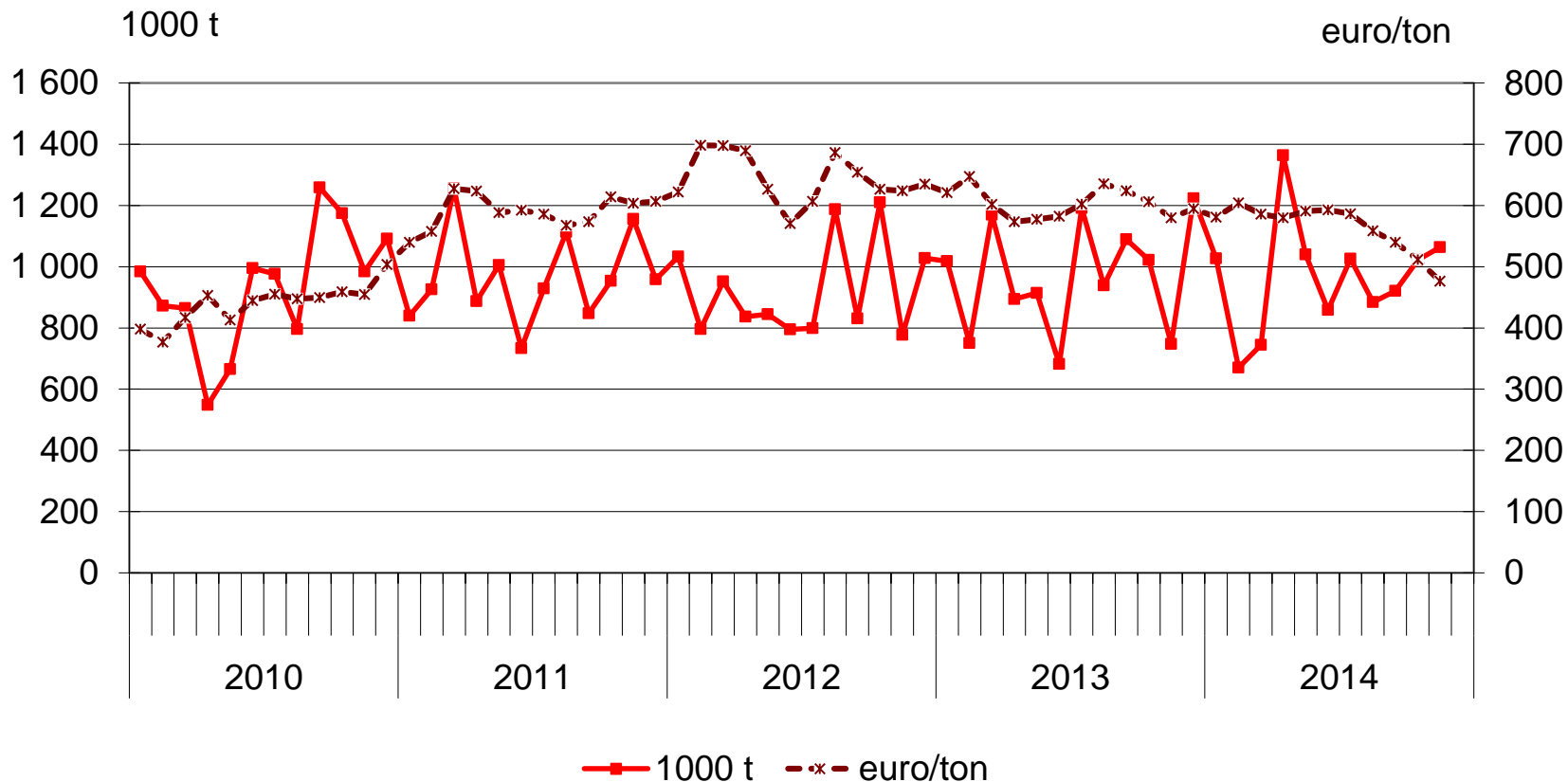


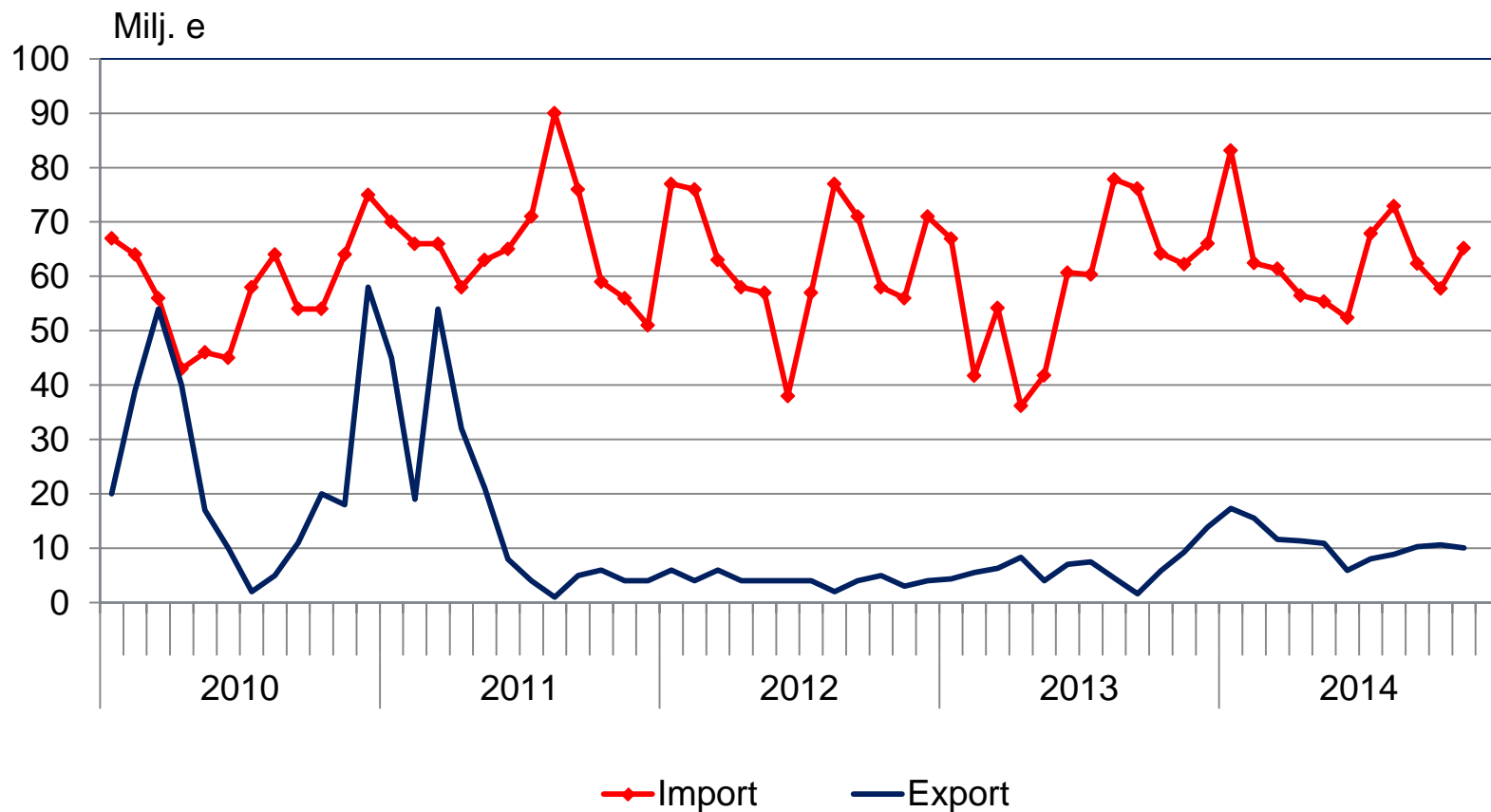


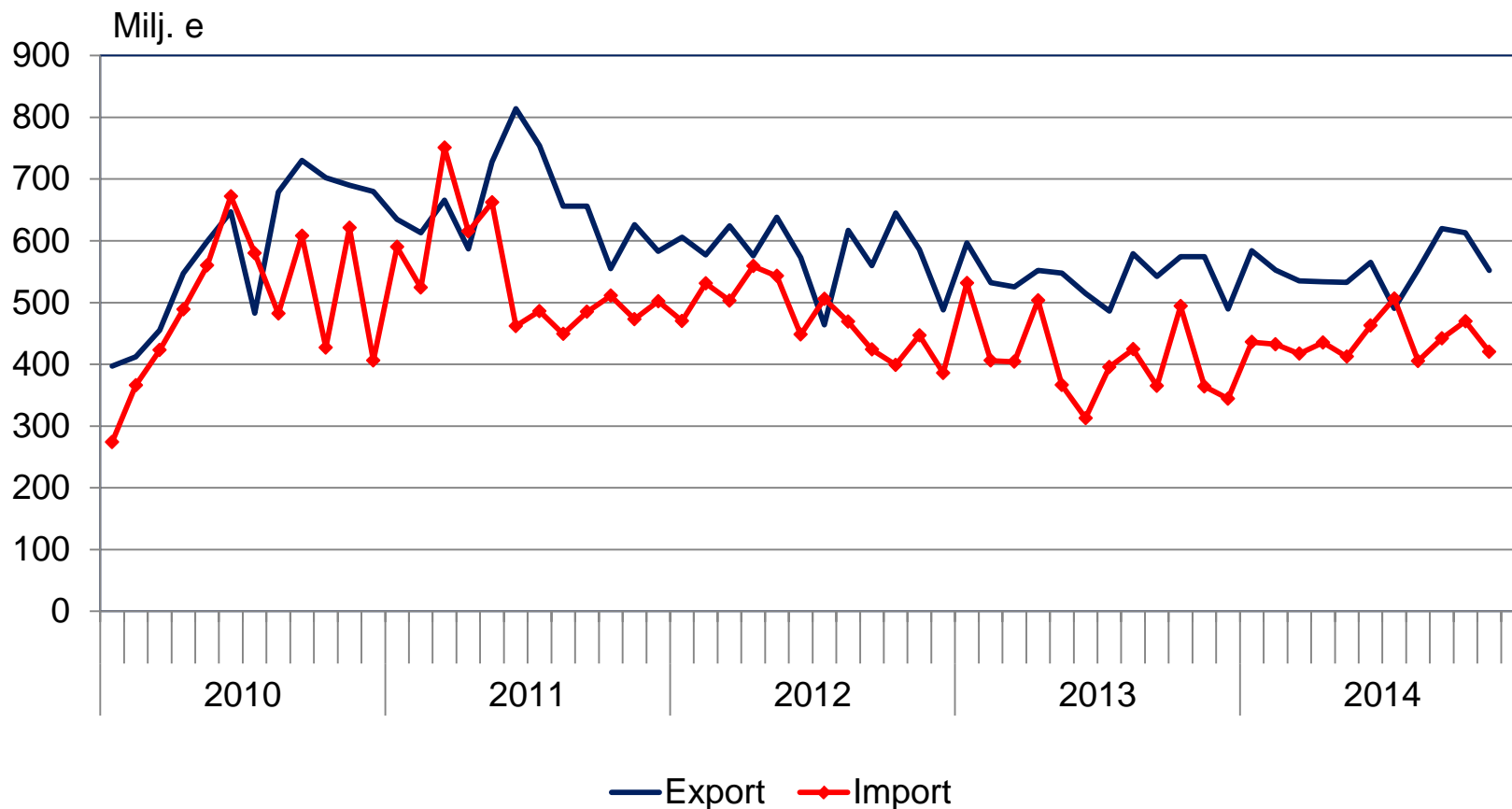




MÅNADVIS UTVECKLING AV IMPORTVOLYMEN OCH IMPORTPRISET PÅ RÅOLJA 2010-2014(1-11); (SITC 333)

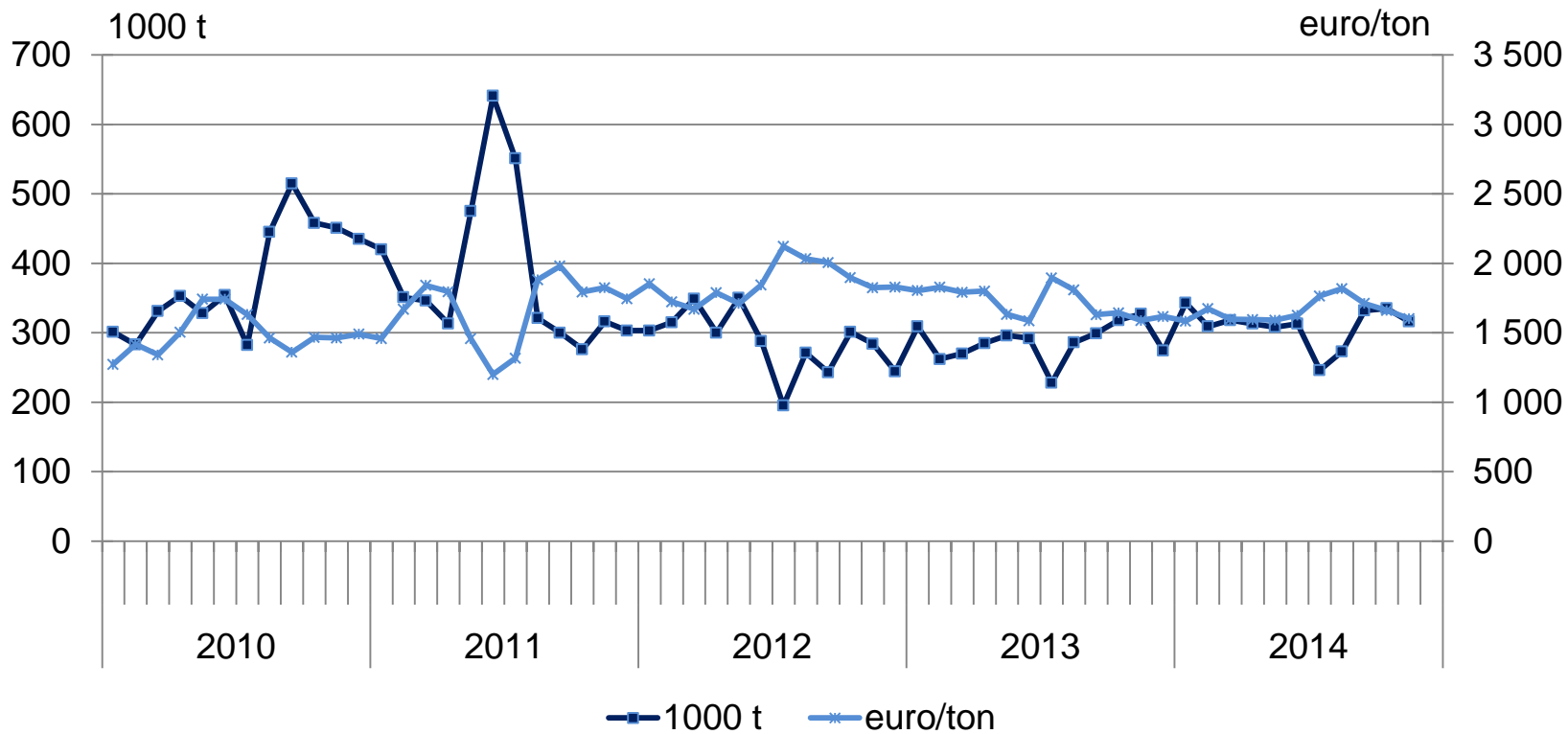






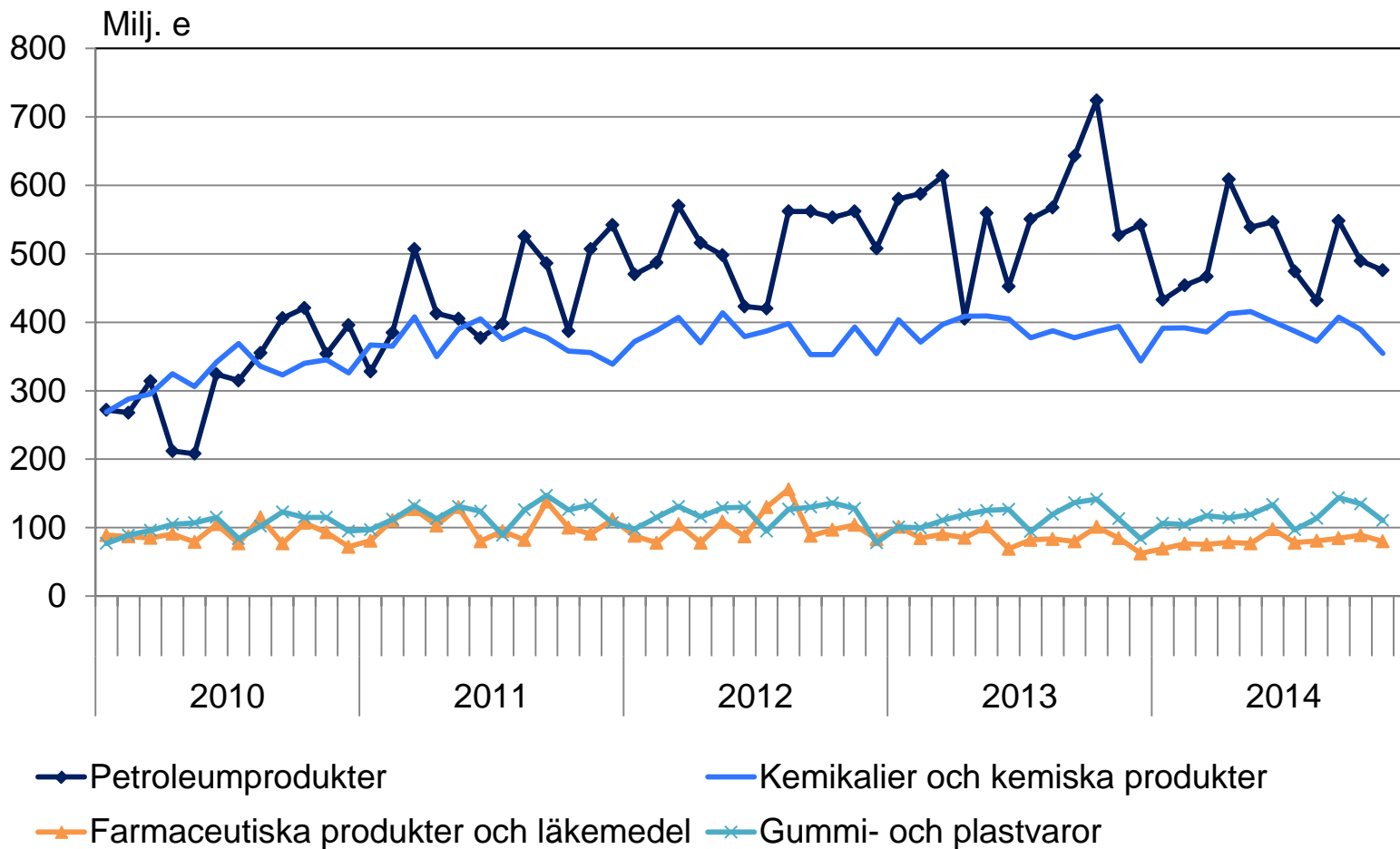


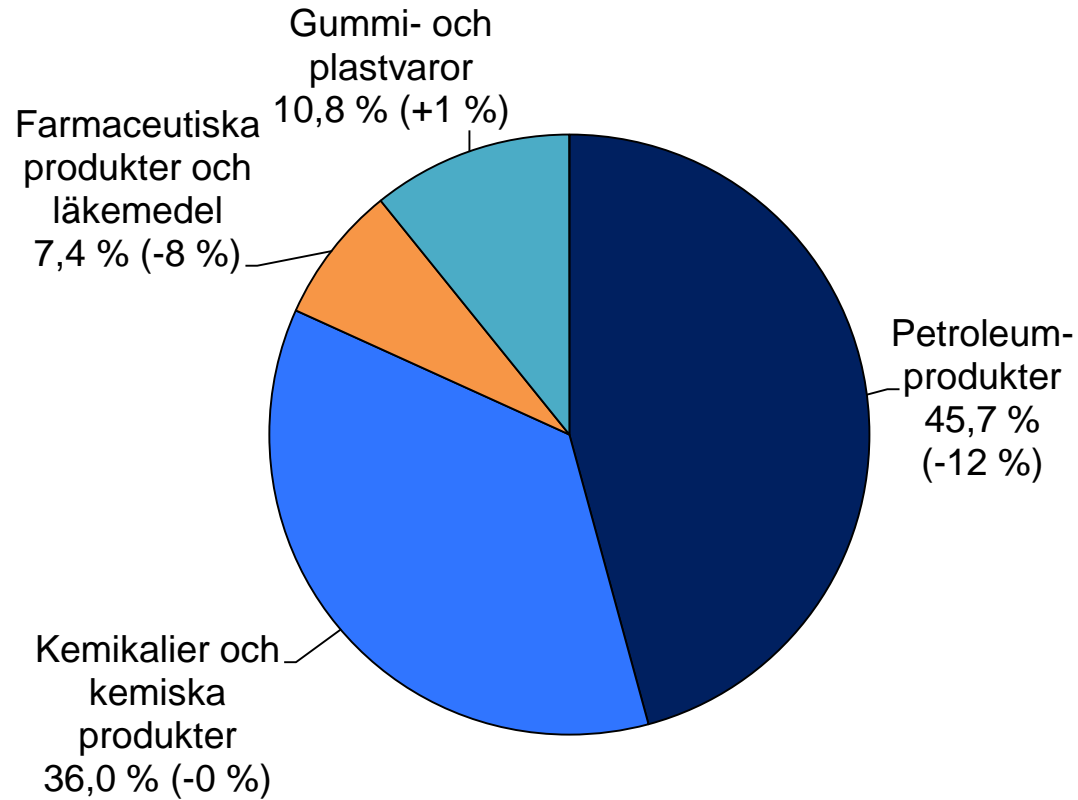
MÅNADVIS UTVECKLING AV EXPORTVOLYMEN OCH EXPORTPRISET PÅ METALLER 2010-2014(1-11); (SITC 67,68)





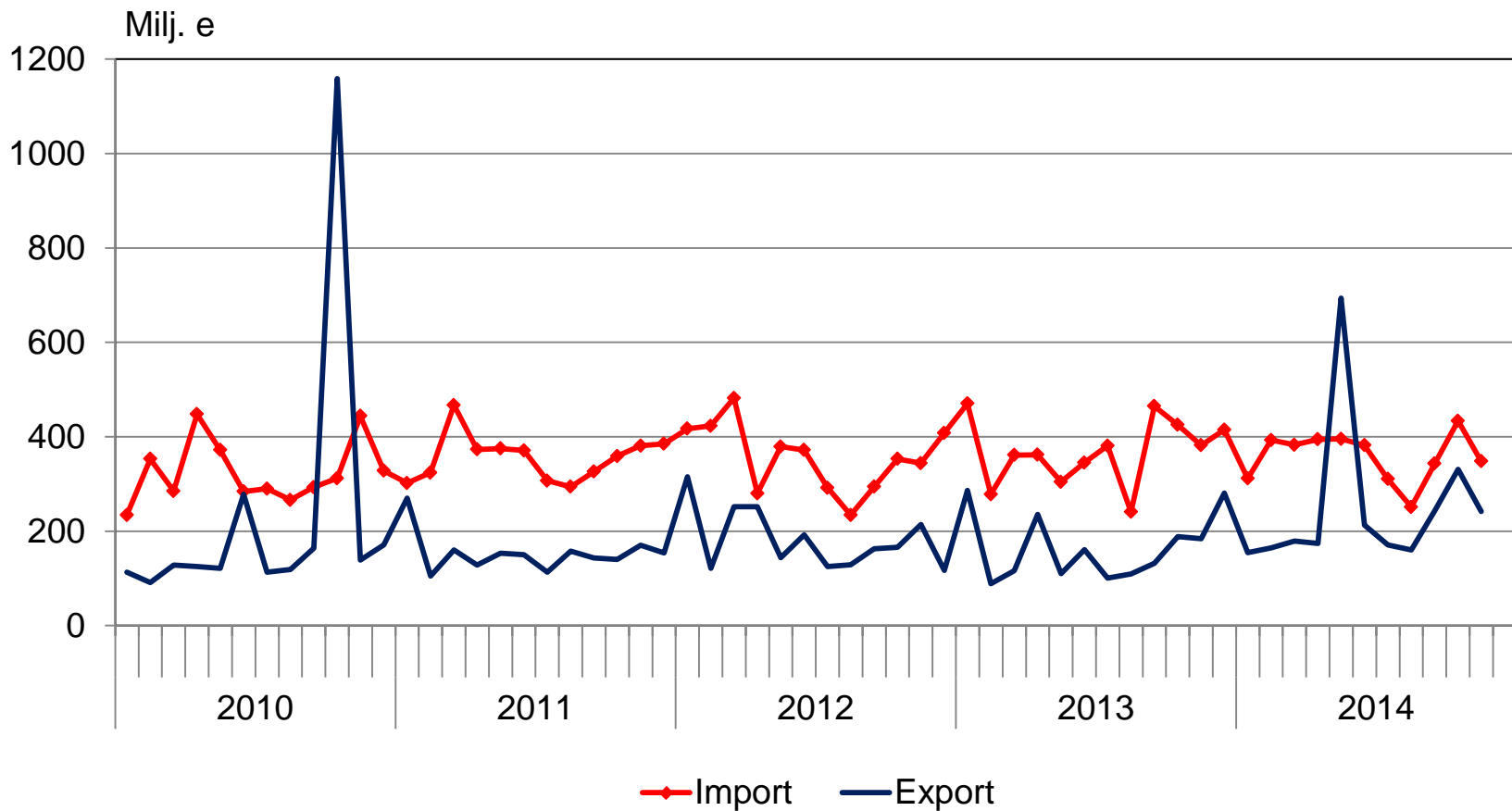
MÅNATLIG EXPORT AV KEMISKA INDUSTRIENS PRODUKTER 2010-2014(1-11); Milj. e; (CPA 19,20,21,22)

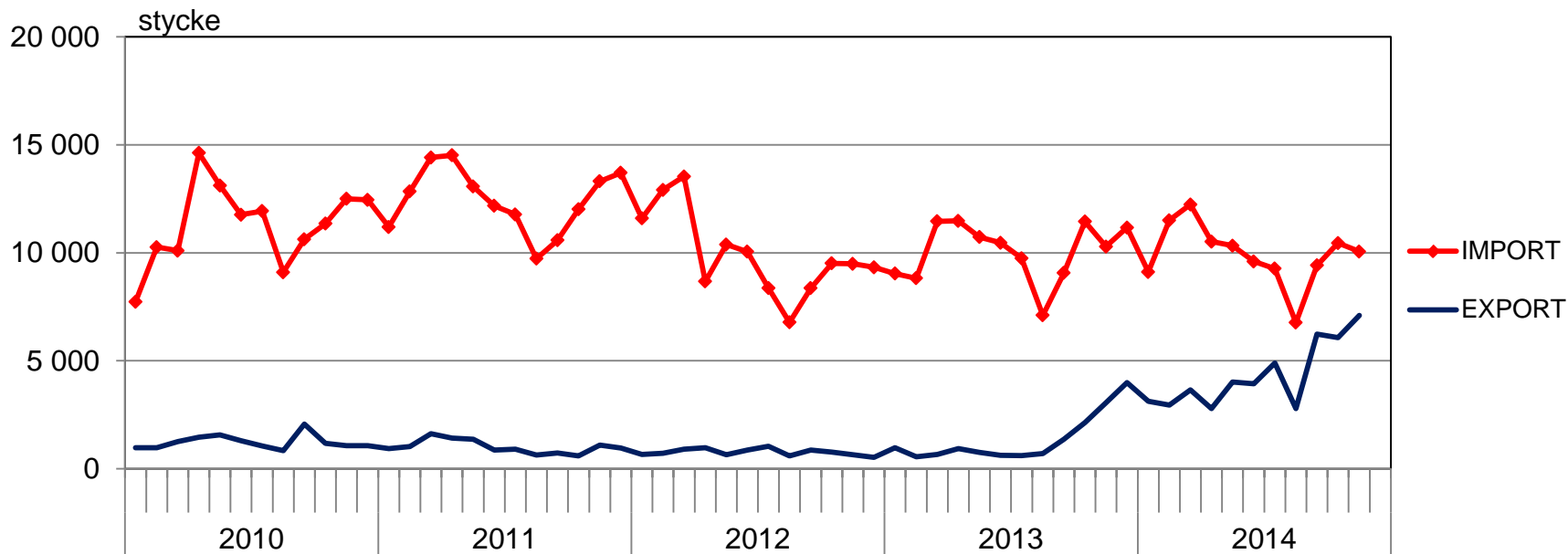






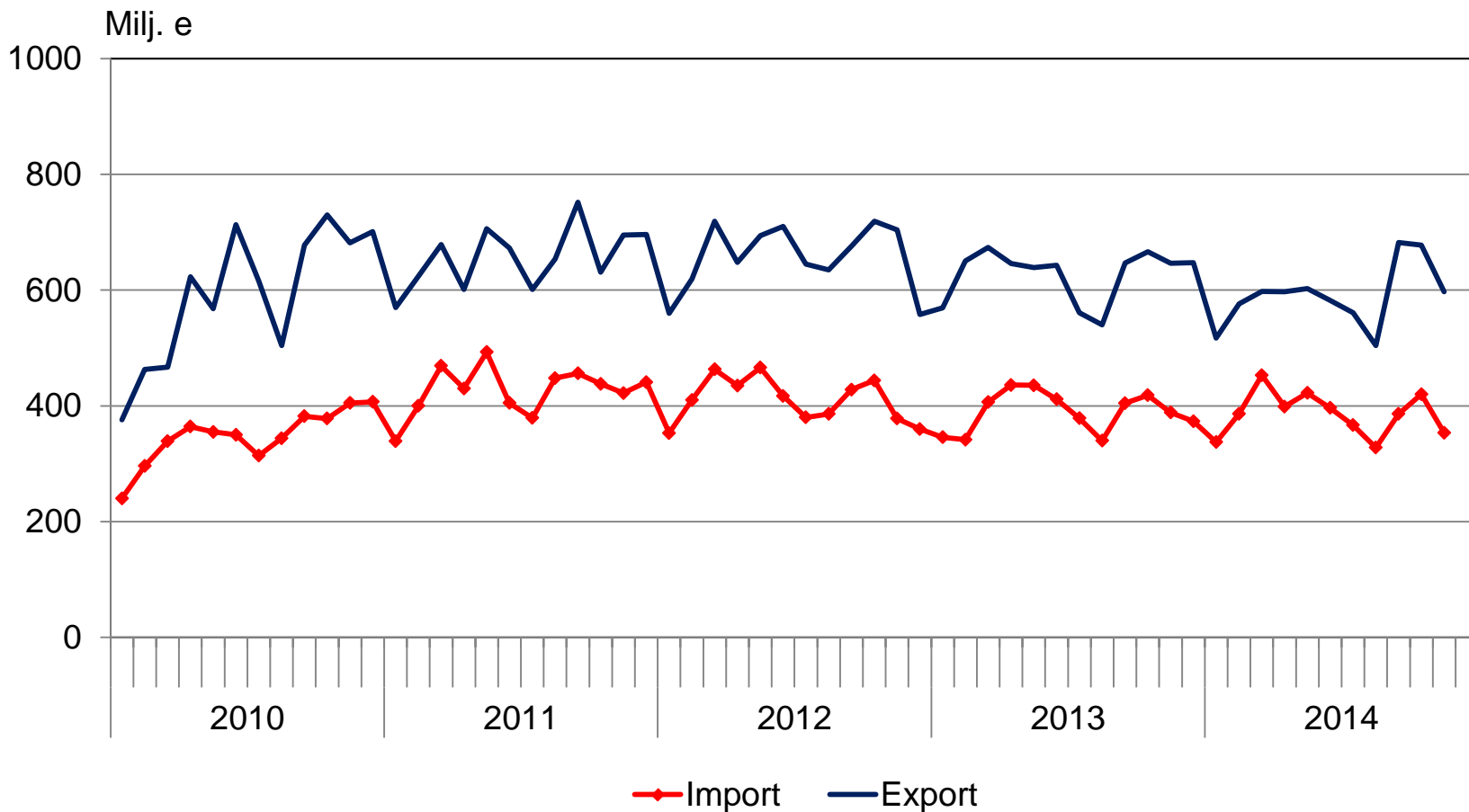
MÅNATLIGA IMPORTEN OCH EXPORTEN AV TRANSPORTMEDEL 2010-2014(1-11); Milj. e; (SITC 78,79)

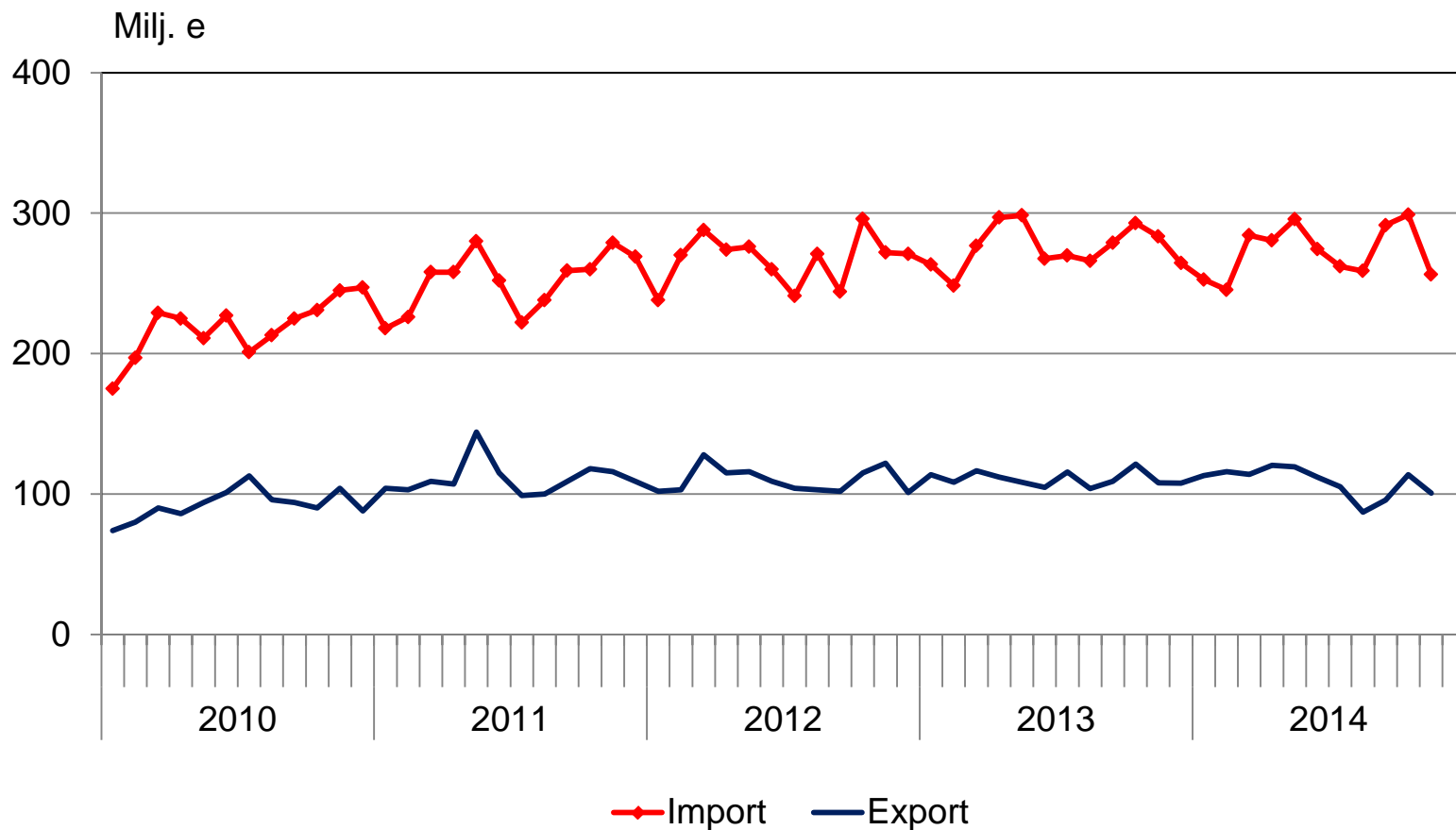


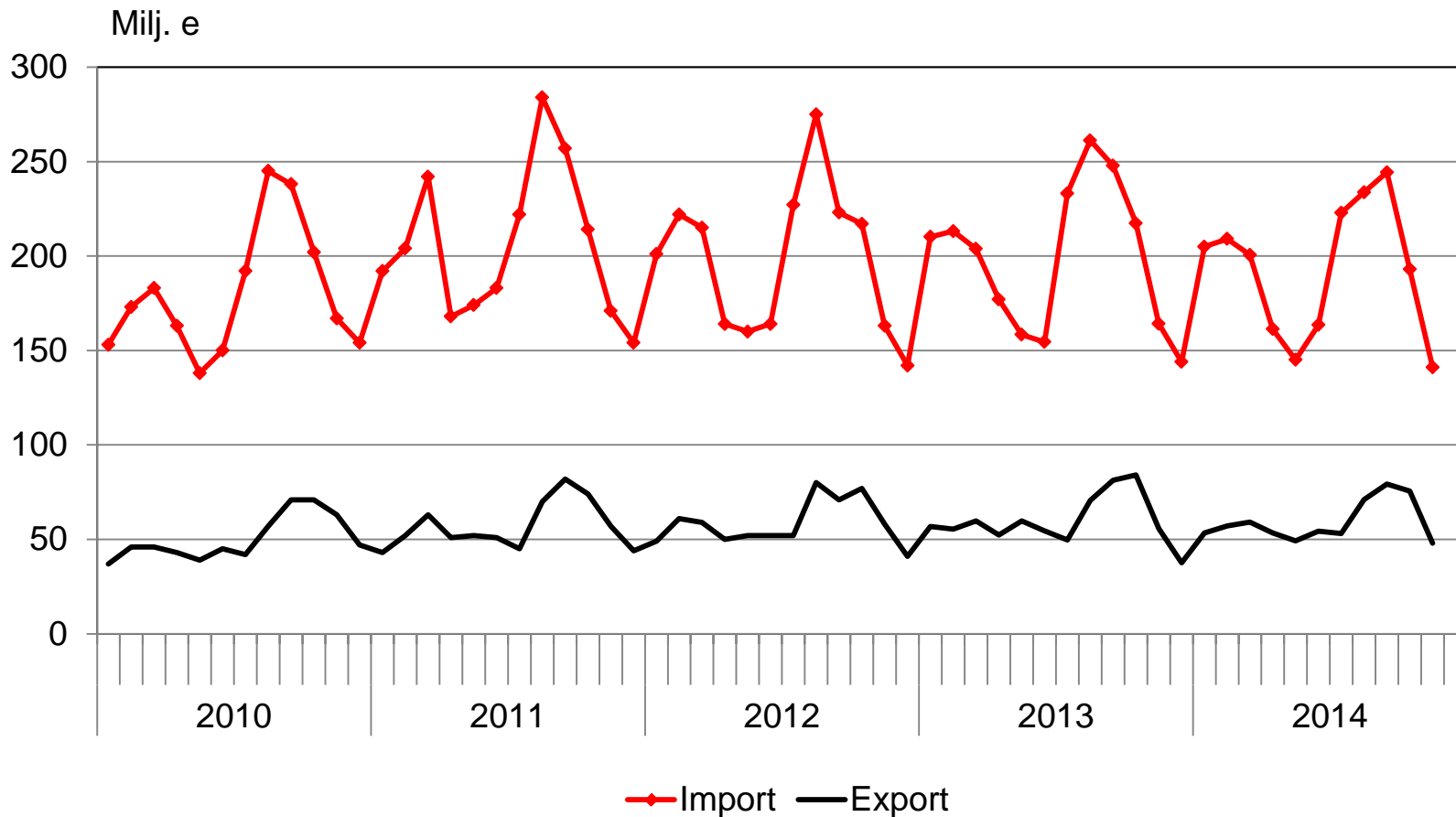


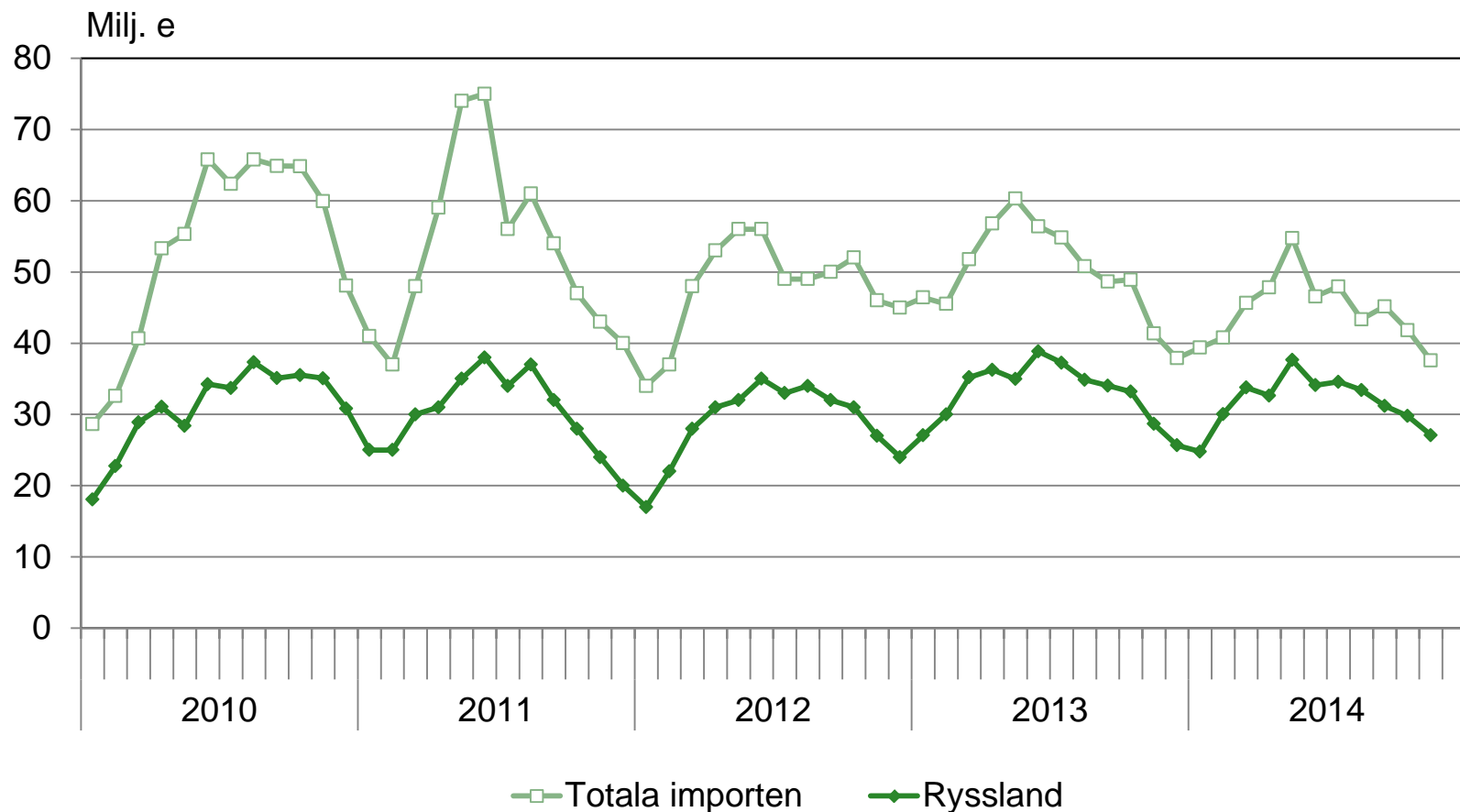
Importen och exporten av personbilar (stycke)

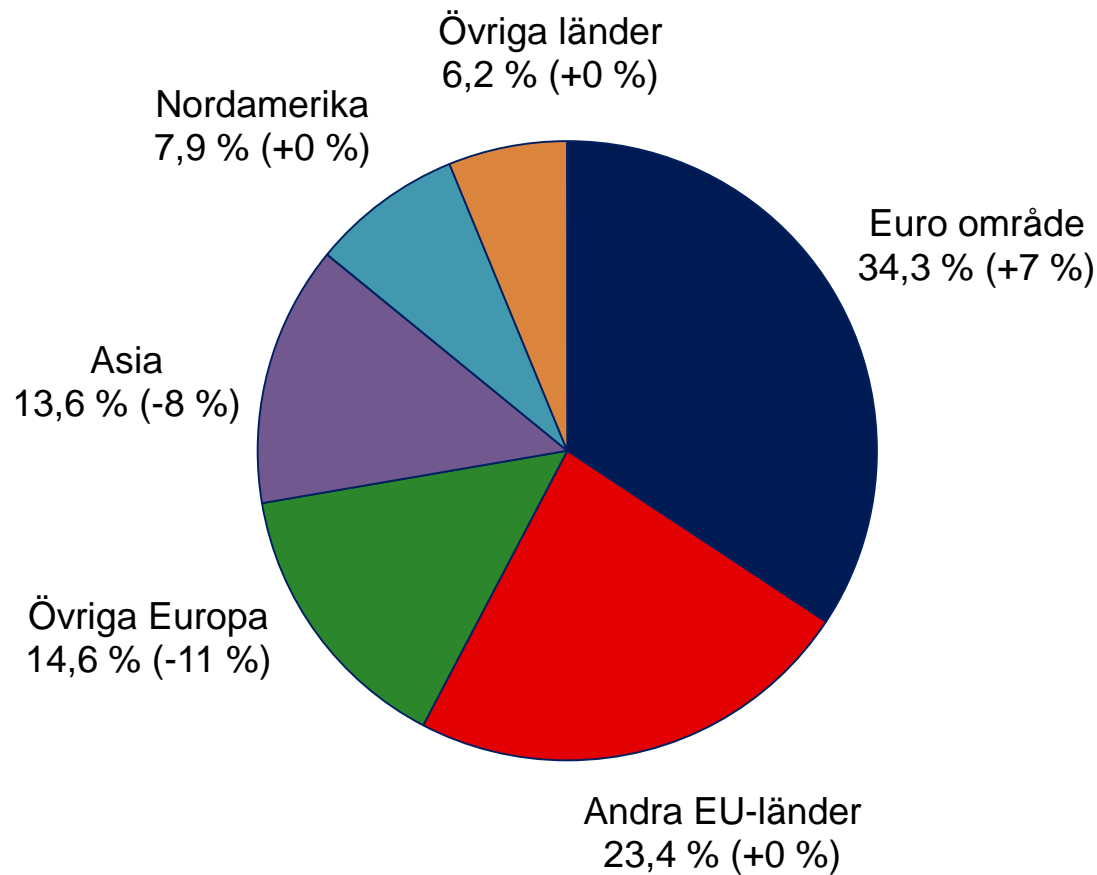
	<u>import</u>	<u>export</u>
2009	108 411	35 422
2010	135 537	14 764
2011	149 316	12 133
2012	118 978	9 157
2013	120 790	16 311
2014(1-11)	109 239	47 505

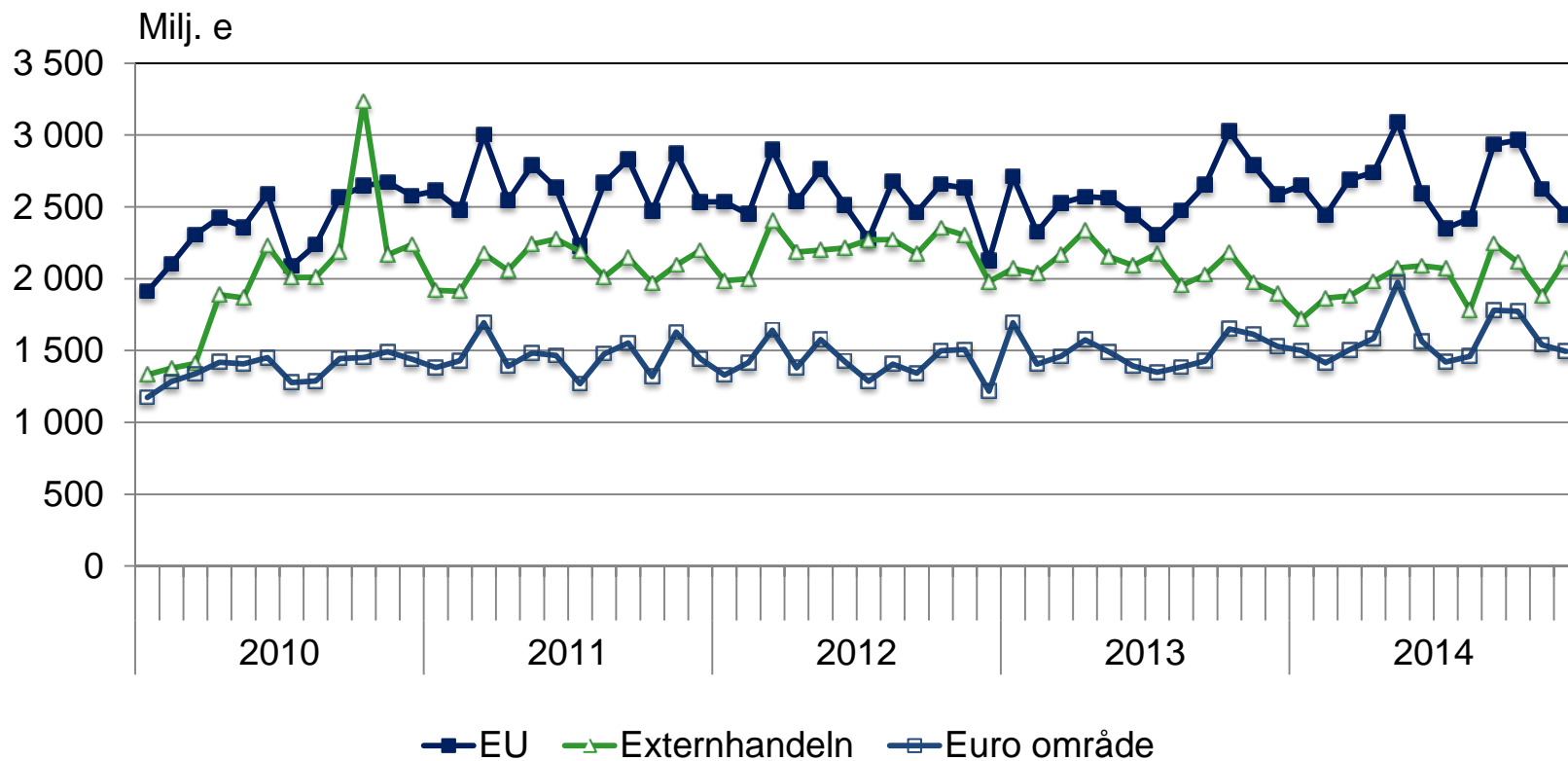


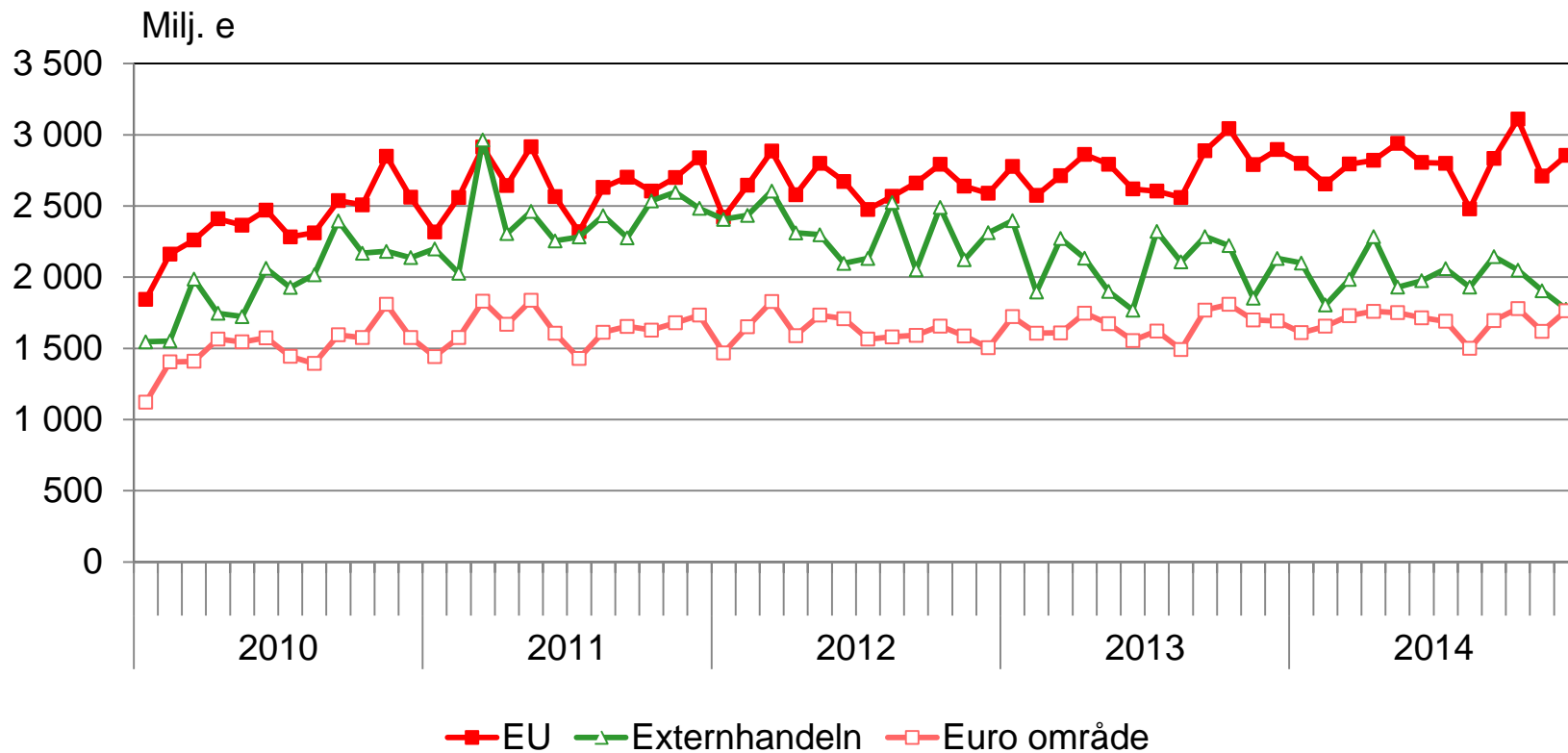


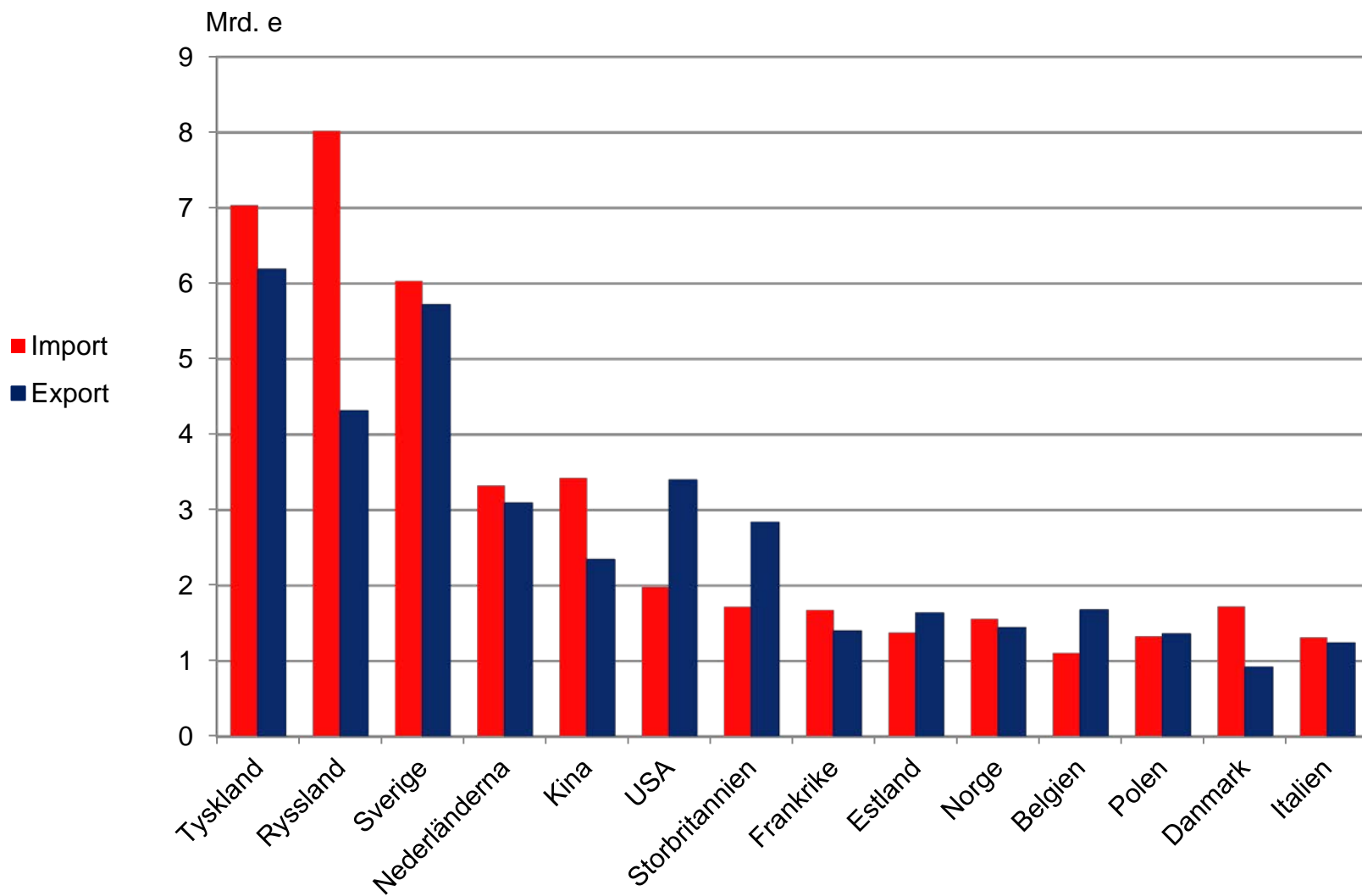






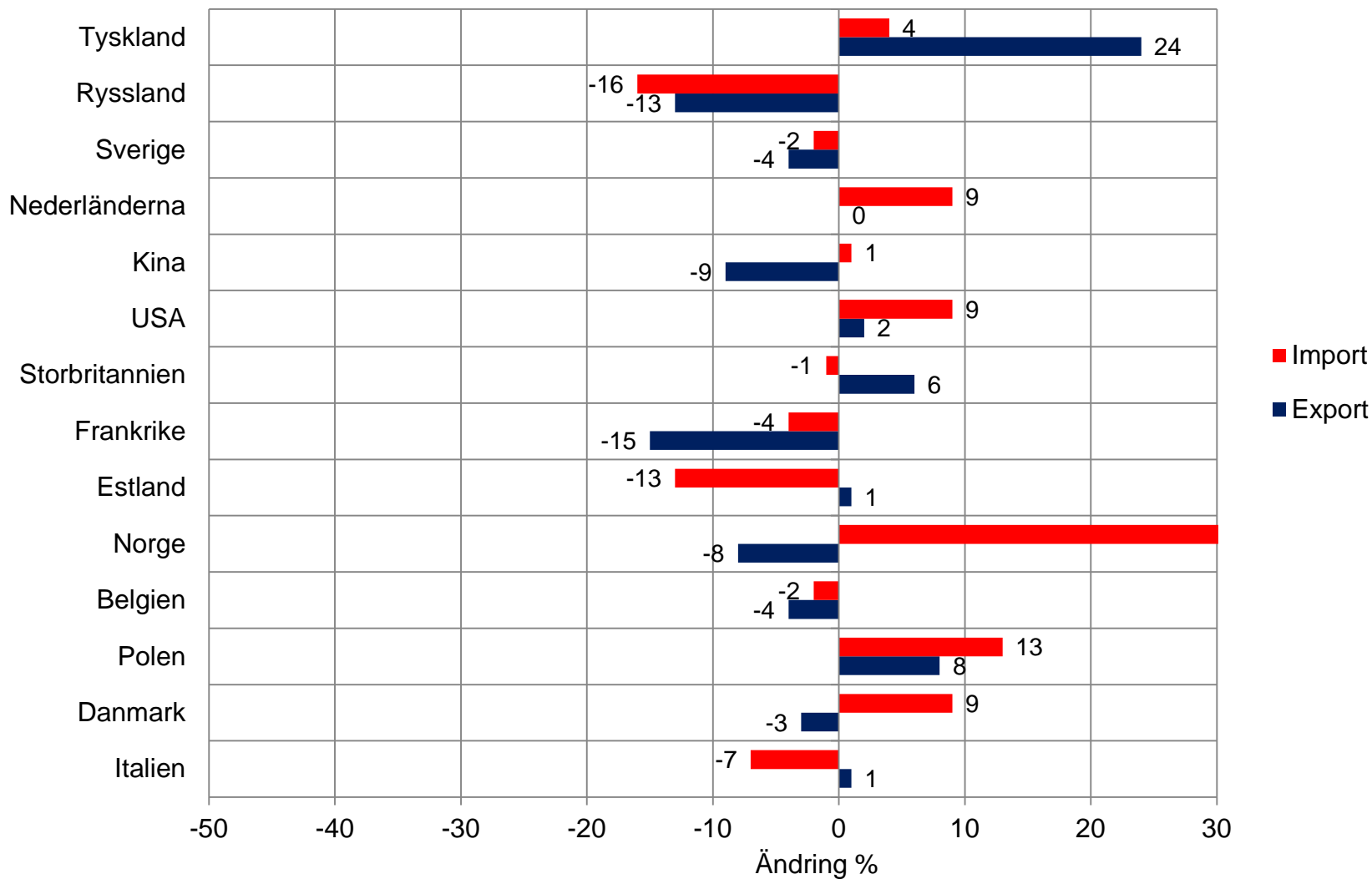


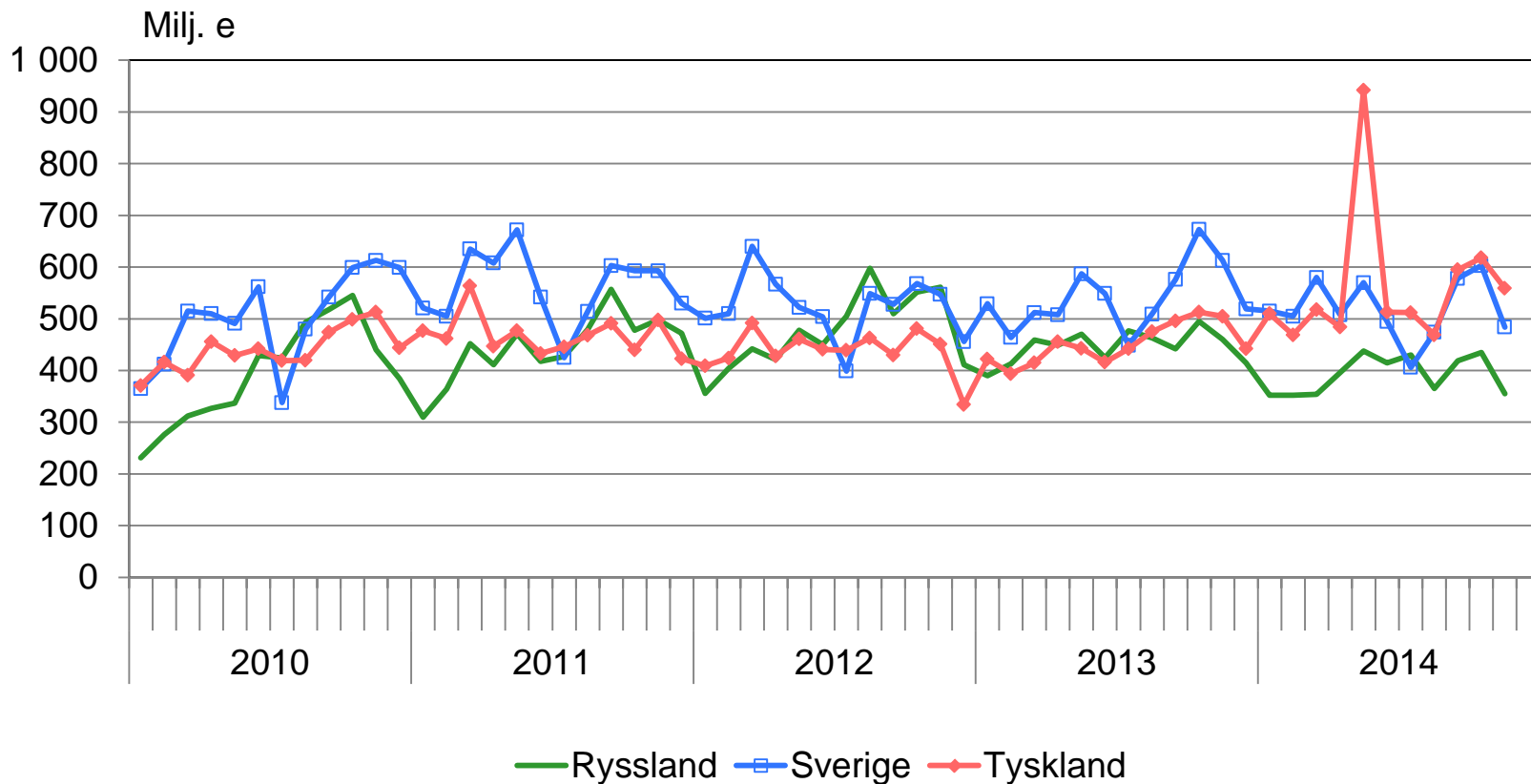


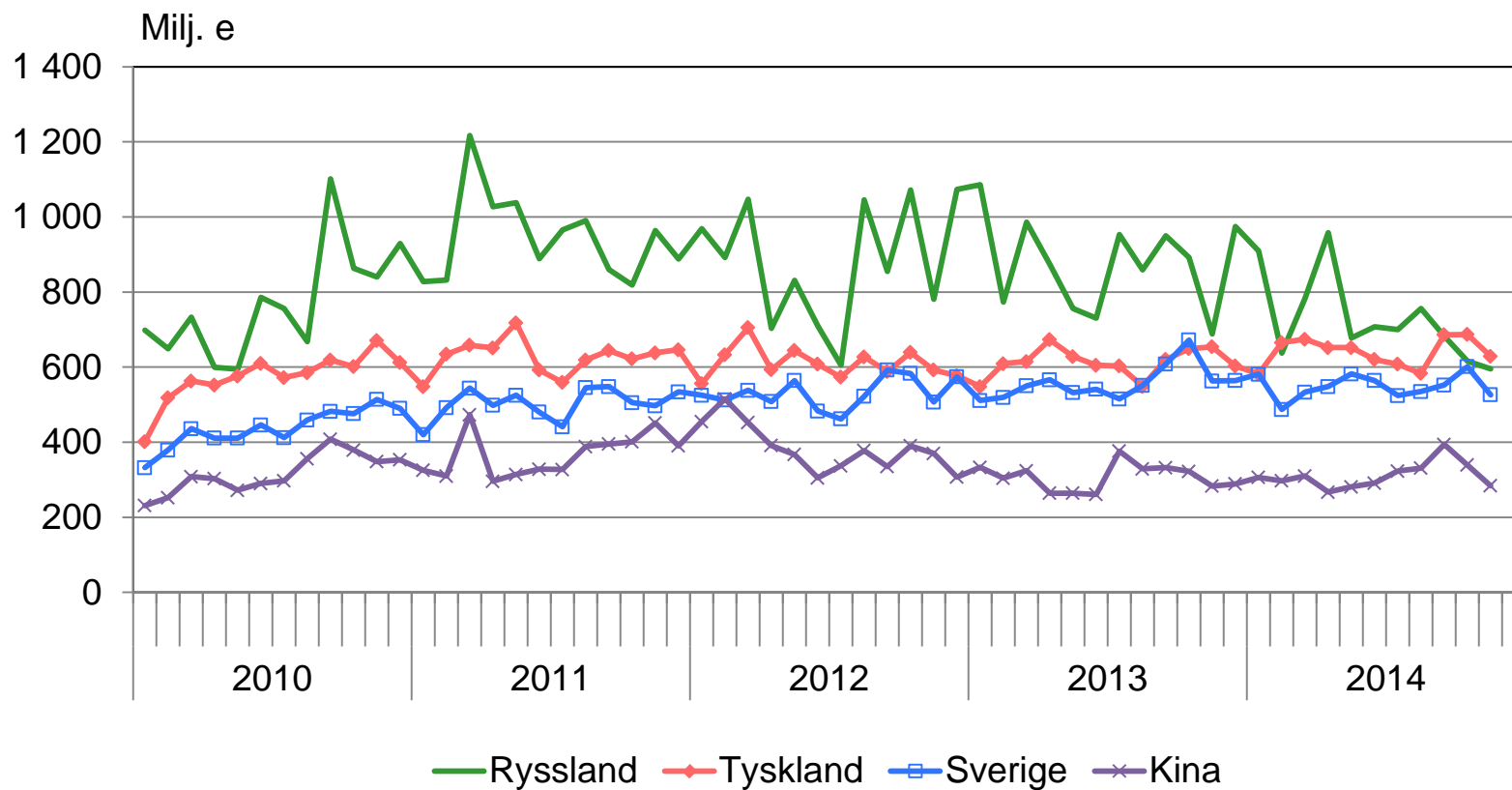


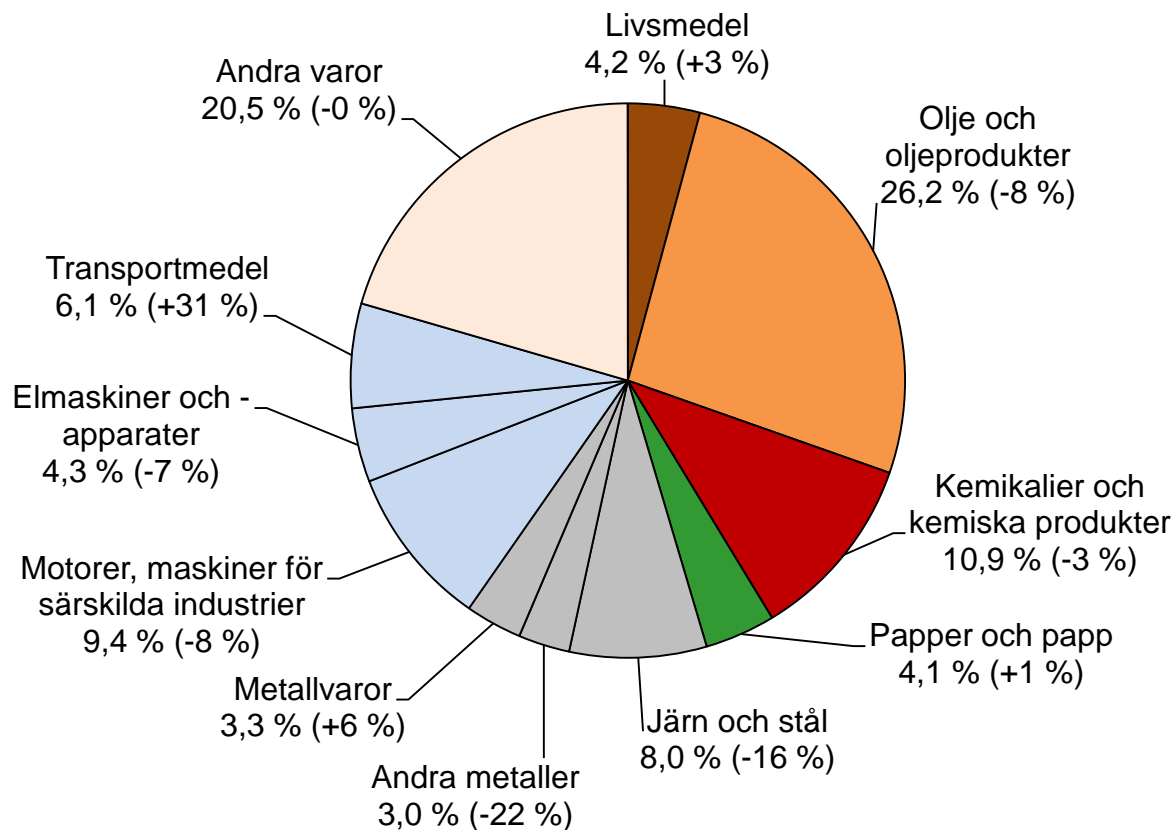


FÖRÄNDRING AV EXPORT OCH IMPORT MED STORA HANDELSPARTNER 2014(1-11); Förändring jämfört med föregående årets motsvarande tidsperiod (%)

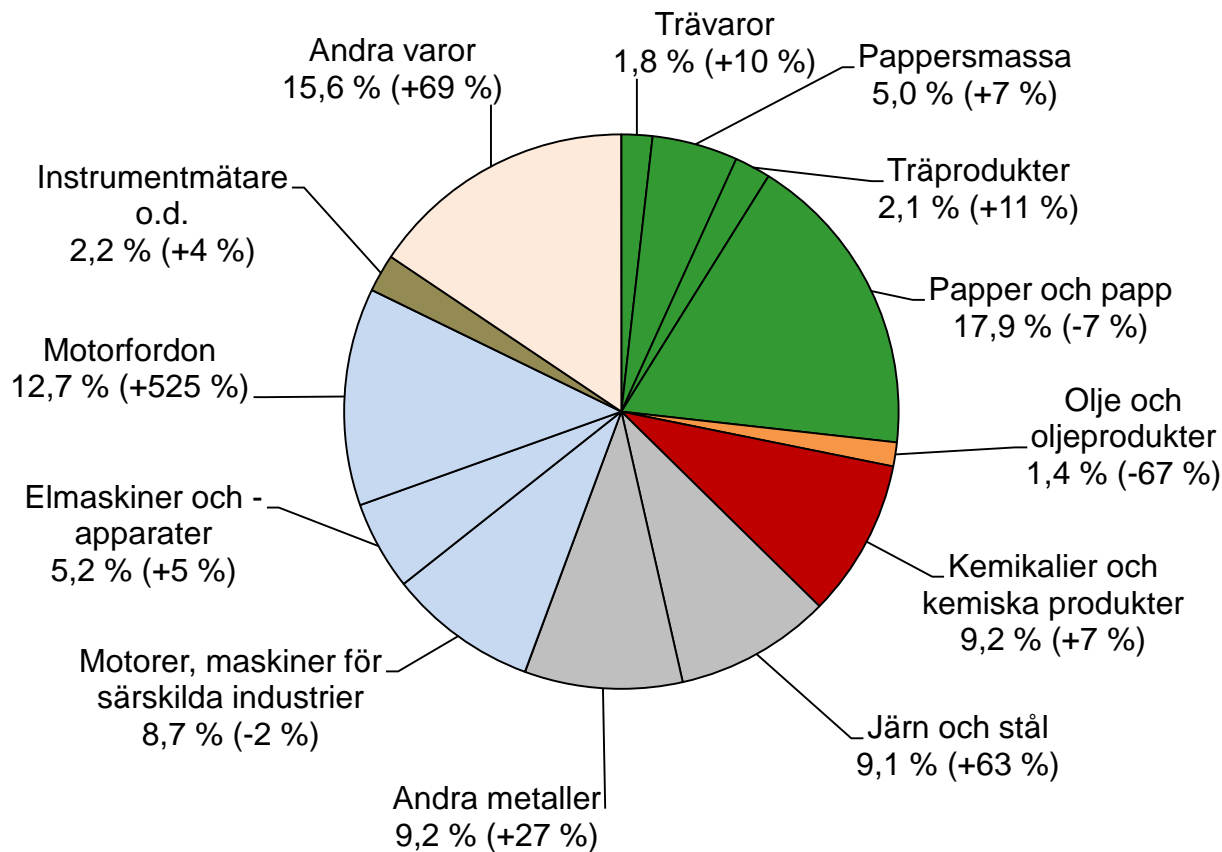




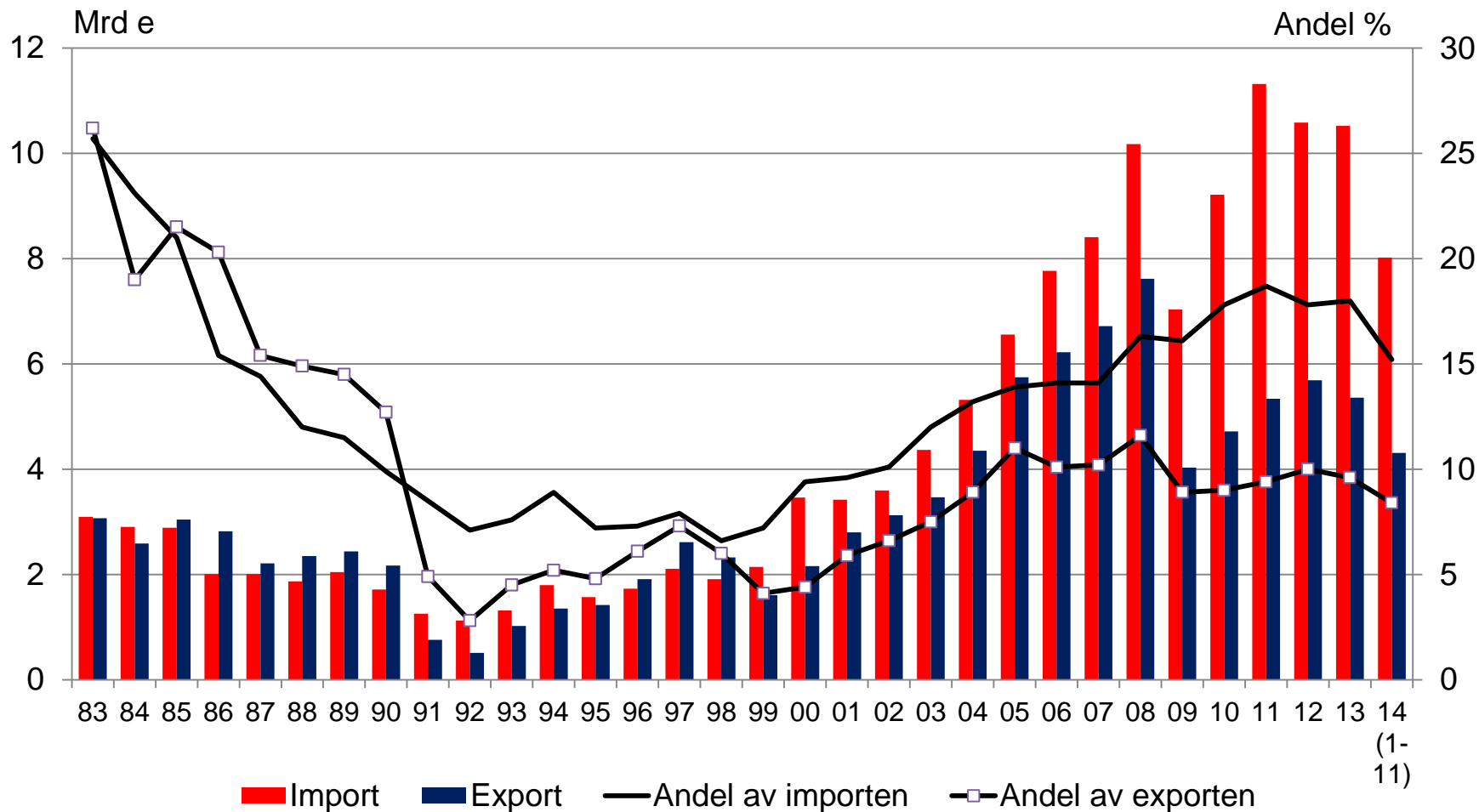


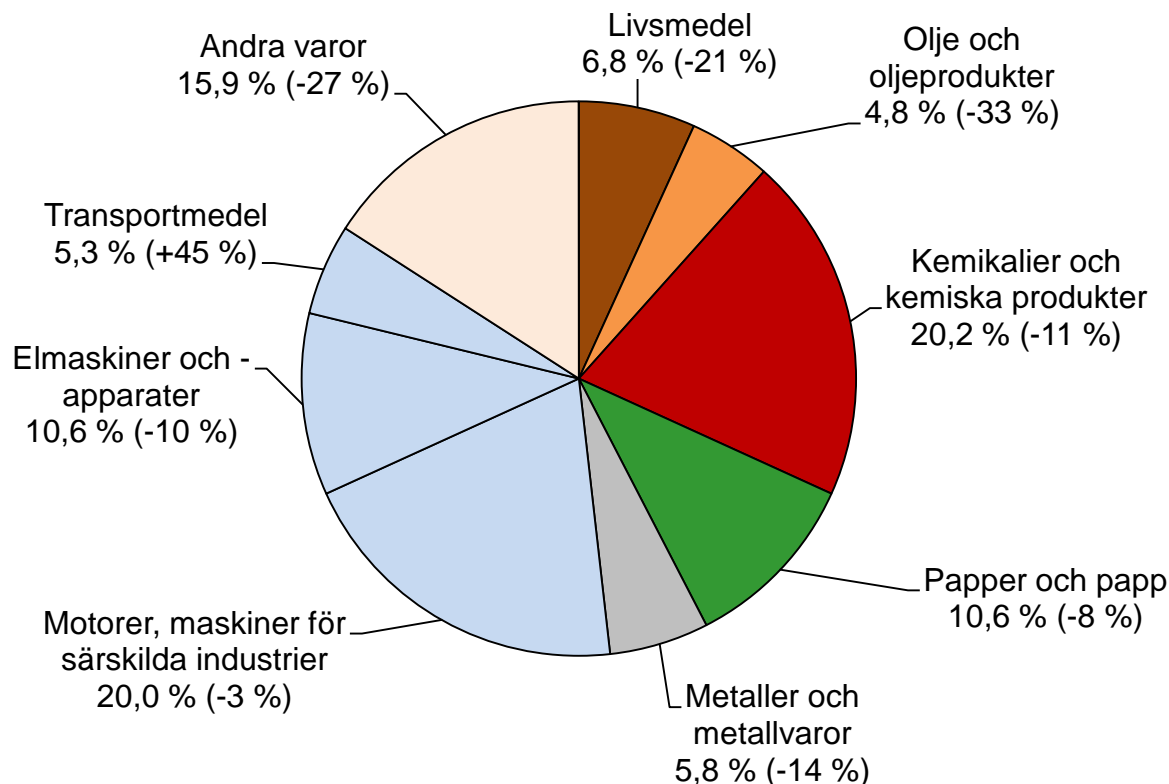


Totala exporten till Sverige år 2014(1-11) var 5,7 mrd. euro (-4 %)

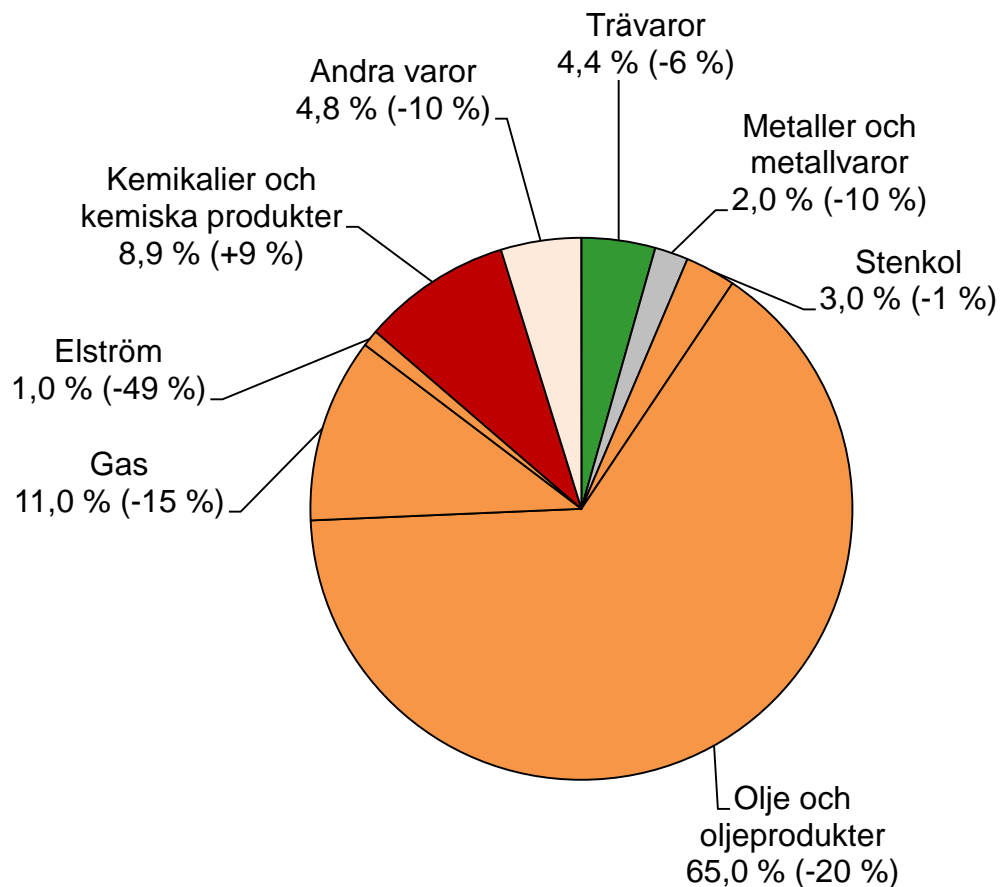


Totala exporten till Tyskland år 2014(1-11) var 6,2 mrd. euro (+24 %)

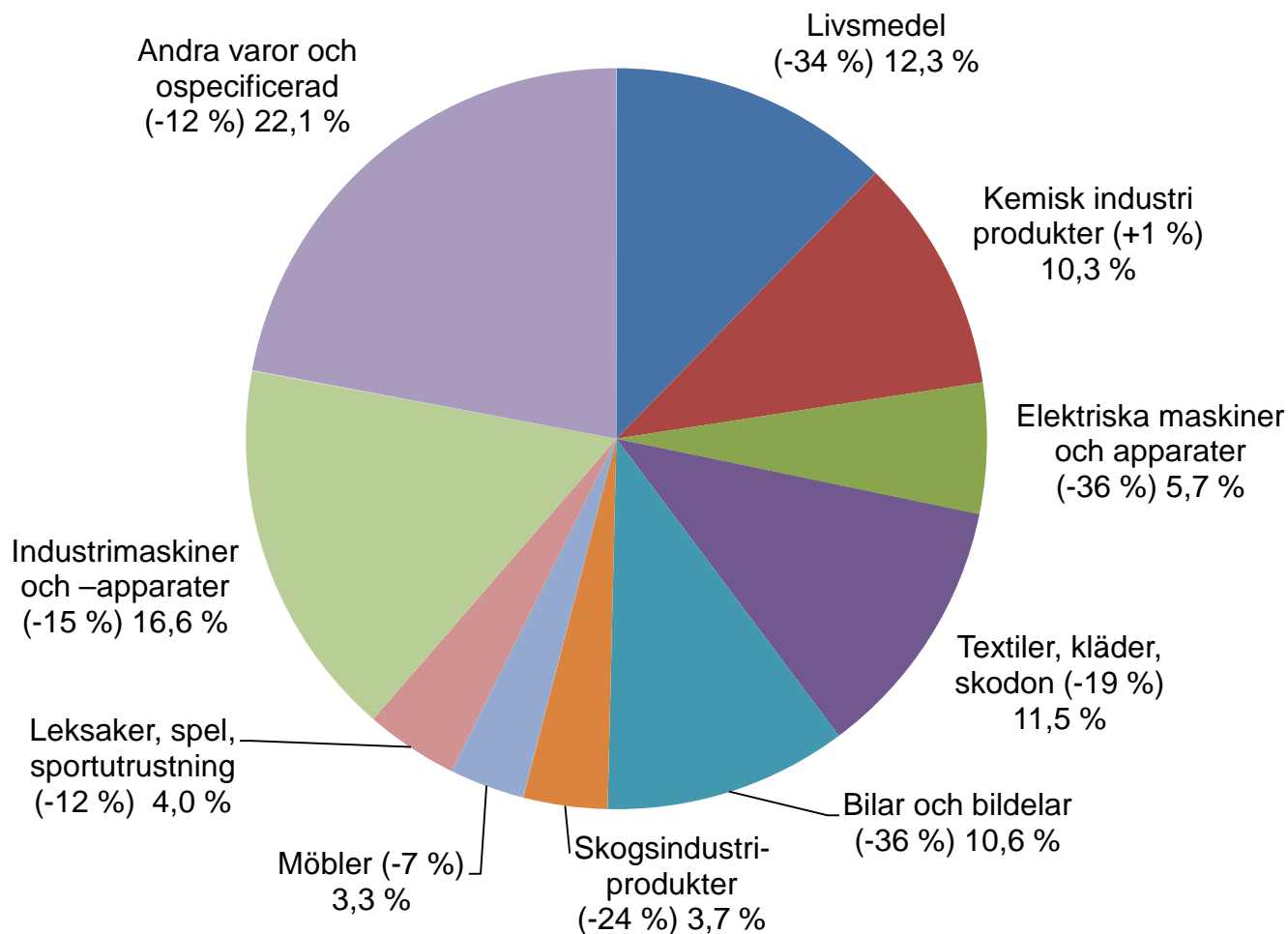


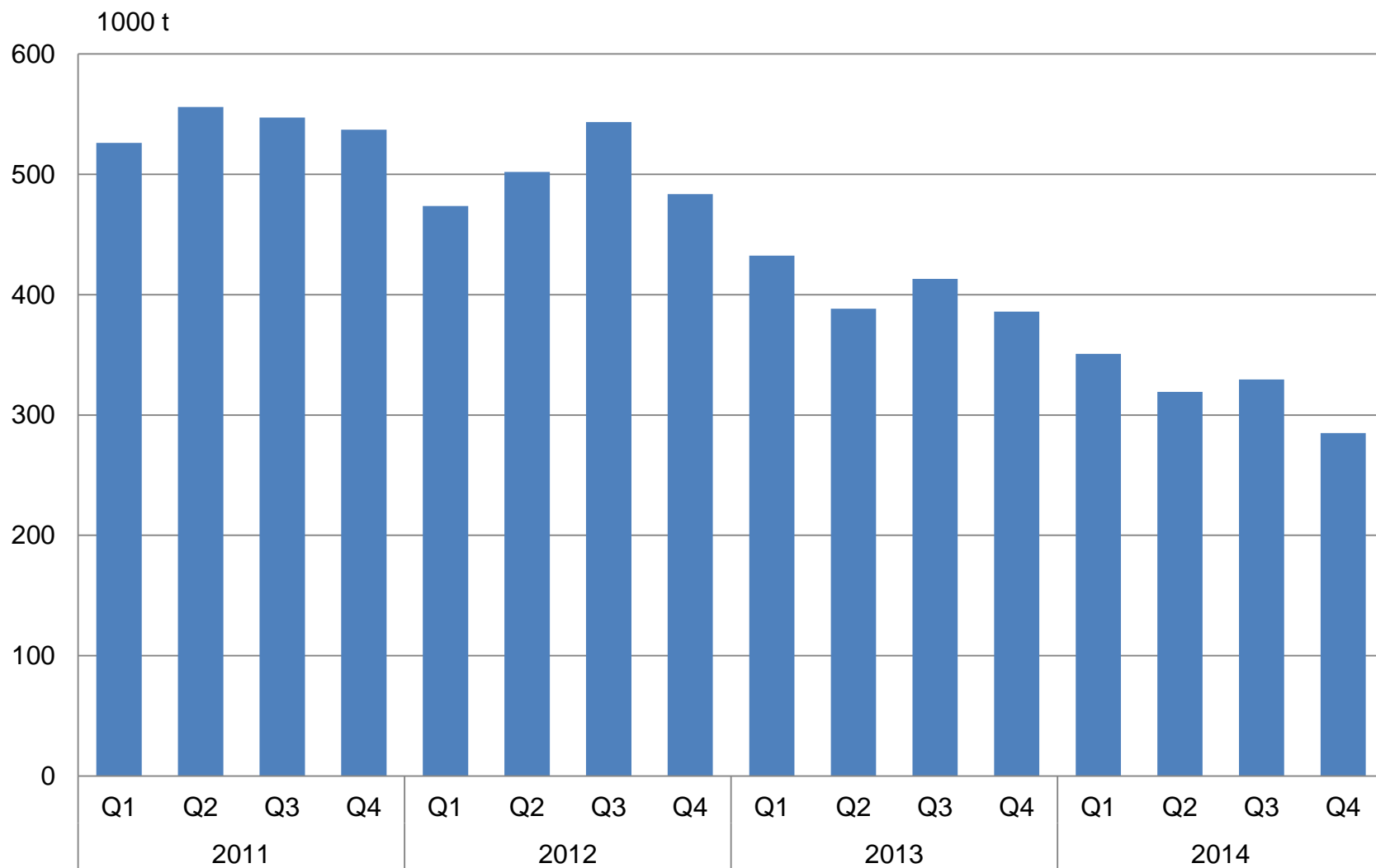


Totala exporten till Ryssland år 2014(1-11) var 4,3 mrd. euro (-13 %)



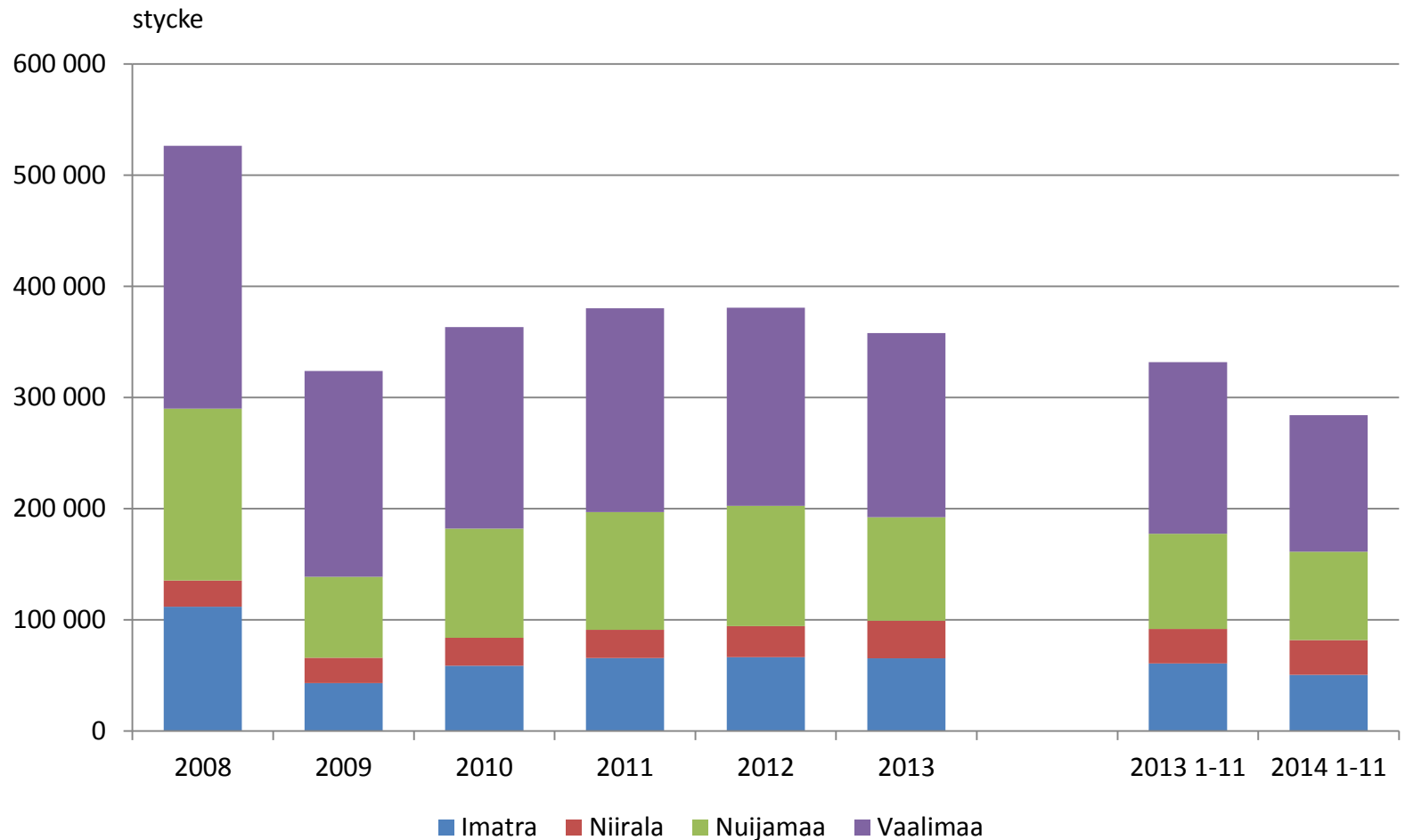
Totala importen från Ryssland år 2014(1-11) var 8,0 mrd. euro (-16 %).
Energiprodukters andel av hela importen från Ryssland var 80,0 %.

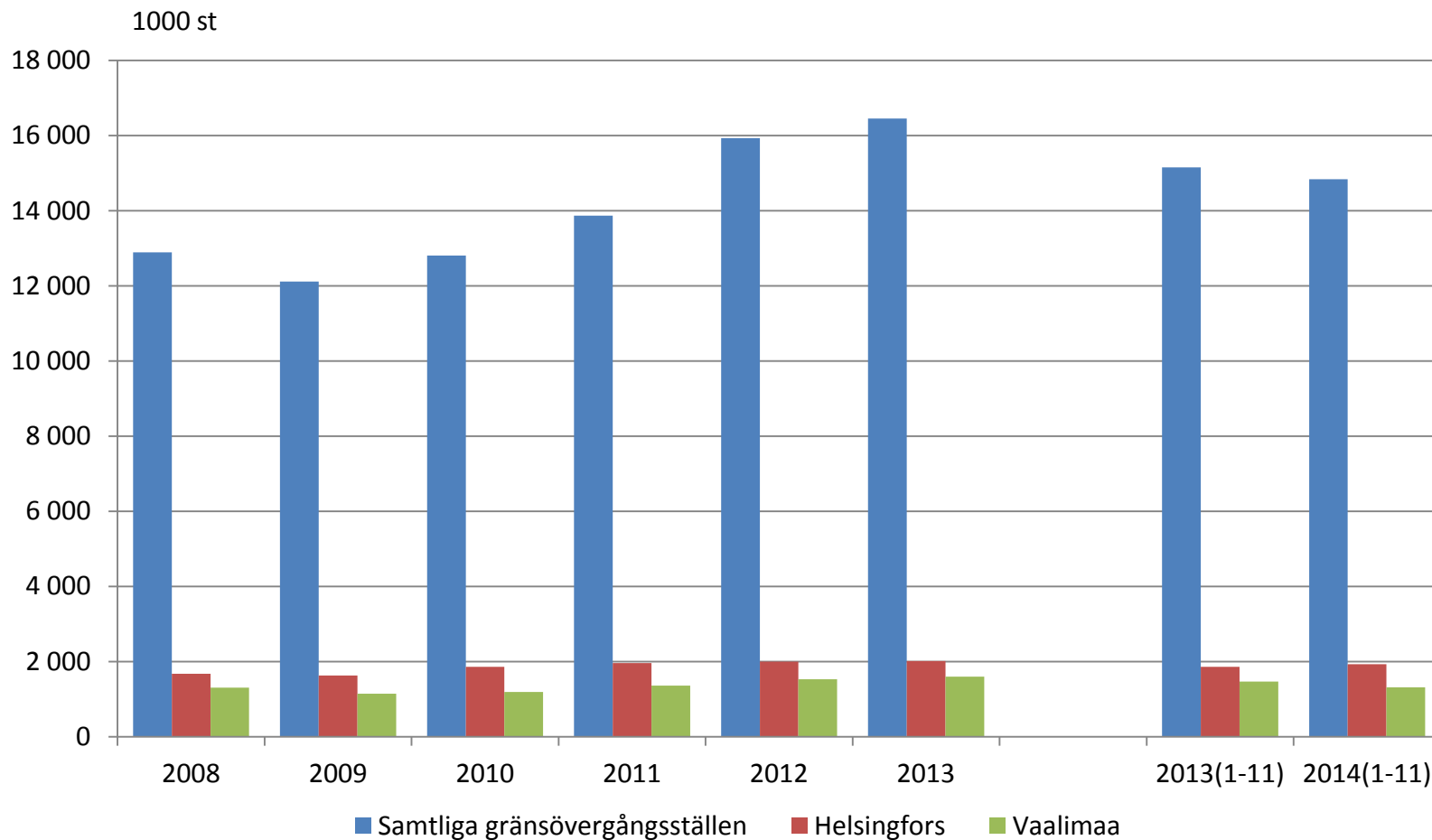






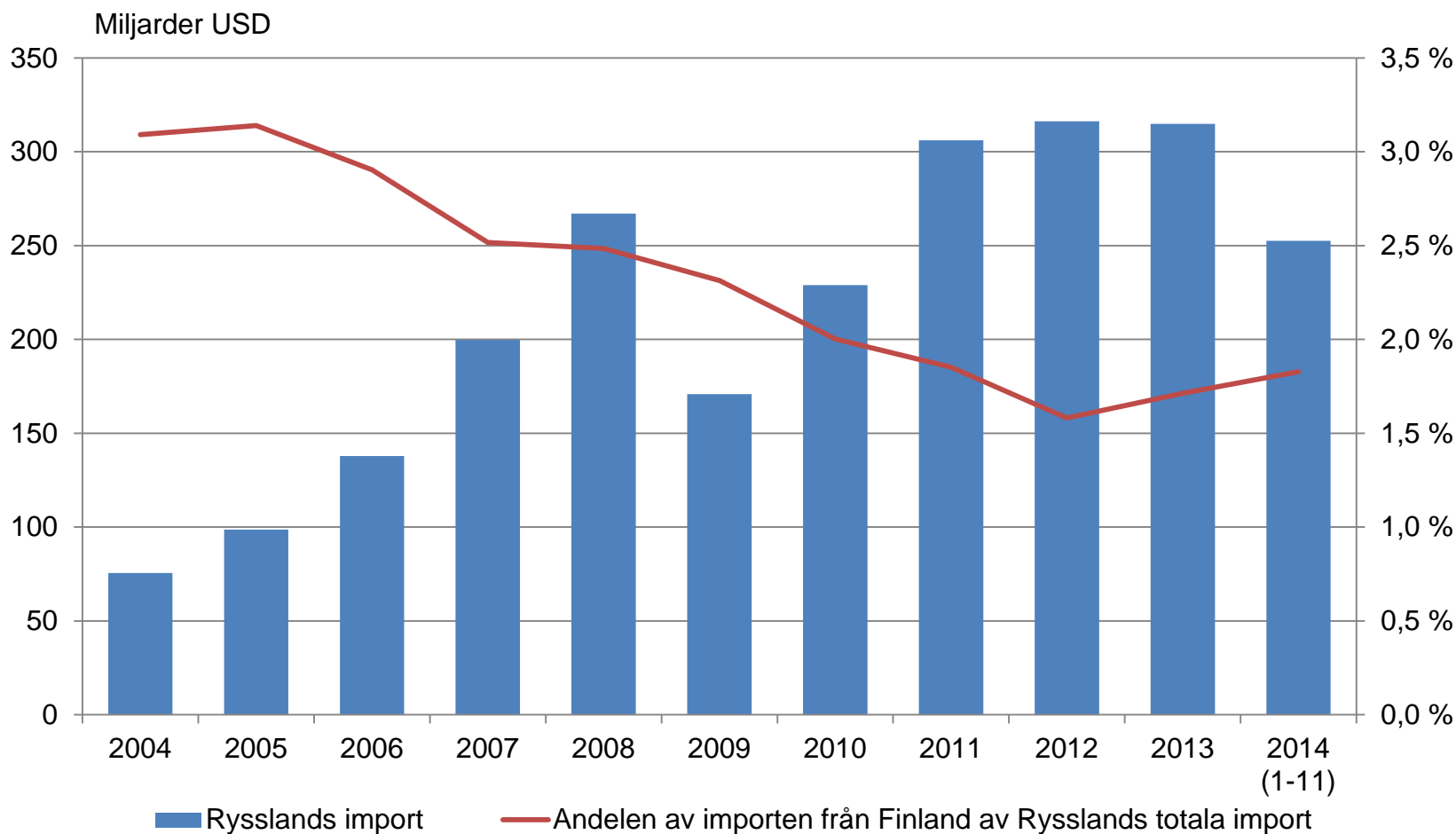
Lastbilar med last per år 2008-2014(1-11) (stykke)







ANDELEN AV FINLÄNDS EXPORT TILL RYSSLAND AV DET TOTALA VÄRDET PÅ RYSSLANDS IMPORT 2004-2014 (1-11)



- Källa: UN Comtrade