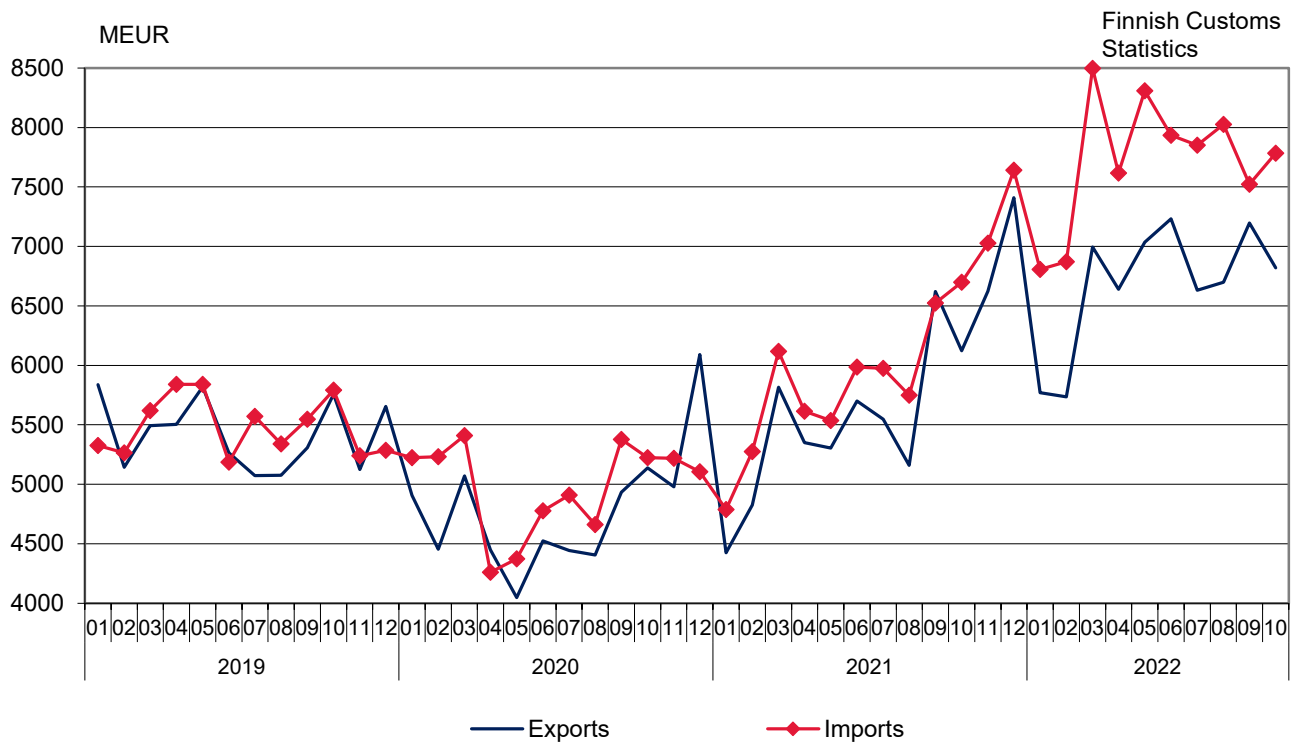


Monthly statistics on the international trade in goods

October 2022

Figure 1. Exports and imports of Finland 2019 – 2022



Helsinki 30.12.2022. Free for publication at 9.00 a.m.

Quoting is encouraged provided Finnish Customs is acknowledged as the source.

Export volume decreased 5.7 per cent - export prices increased 18.7 per cent in October

The value of Finnish exports of goods increased by 11.4 per cent year-on-year in October, according to the international trade in goods statistics provided by Finnish Customs. The value of Finnish exports was EUR 6.8 billion. Export volume decreased by 5.7 per cent, but export prices increased by 18.7 per cent year-on-year. The value of imports increased by 16.2 per cent in October to EUR 7.8 billion. Import prices increased by 18.8 per cent, but import volume decreased by 1.9 per cent compared to October 2021. In January-October, the aggregated value of exports increased by 21.7 per cent and the value of imports by 32.5 per cent compared with the corresponding period last year.

In October 2022, the trade balance showed a deficit of EUR 966 million. In January-October 2022, the trade balance had an aggregated deficit of EUR 10.5 billion. The deficit was EUR 7.1 billion higher than in the corresponding period last year. The aggregate trade surplus by commodity group for forest industry products increased in January-October compared with the corresponding period in 2021. The trade balance surplus in industrial machinery and equipment decreased from a year ago, but the trade balance surplus in metals increased. Trade balance deficit increased in the trade of energy products, ores and scrap metal and electrical machinery and equipment.

The terms of trade weakened in October compared to the corresponding month of 2021 as import prices rose more than export prices. The point figure in October was 97.8, while it was 97.9 in October 2021. The terms of trade improved from September 2022.

The value of exports of capital goods increased by 25.9 per cent in October and the value of exports of industrial supplies by 7.0 per cent year-on-year. The value of exports of fuels and lubricants increased by 27.5 per cent. The value of exports of consumer goods rose by 26.1 per cent and the value of exports of food and beverages by 20.0 per cent. The value of exports of transport equipment and parts decreased by 27.0 per cent.

The value of imports of industrial supplies increased by 8.3 per cent in October, and the value of imports of capital goods rose by 20.0 per cent year-on-year. The value of imports of transport equipment and parts increased by 5.9 per cent. The value of imports of fuels and lubricants rose by 42.5 per cent. The value of imports of food and beverages increased by 22.2 per cent and the value of imports of consumer goods by 13.5 per cent.

Exports to EU countries rose by 7.3 per cent and exports to non-EU countries by 16.8 per cent in October. Imports from EU countries increased by 12.3 per cent and imports from outside the EU by 21.2 per cent in October. In January-October, total exports to EU countries increased by 24.9 per cent and exports to non-EU countries by 17.6 per cent. During the same period, imports from EU countries rose by 22.9 per cent and from outside the EU by 46.2 per cent.

Table 1. Total development (e million)

	October		Change %	January-October		Change %
	2021	2022		2021	2022	
Exports (fob)	6 124	6 819	11,4	54 875	66 758	21,7
Imports (cif)	6 698	7 785	16,2	58 266	77 220	32,5
Trade balance	-574	-966		-3 392	-10 461	

Table 2. International trade indexes

2020=100	October		Change %		Average *	Change %
	2021:10	2022:10	2022:10/ 2022:09	2022:10/ 2021:10		
Volume index						
Exports	104,7	98,7	-4,1	-5,7	101,1	-2,7
Imports	107,9	105,9	6,5	-1,9	105,8	4,8
Unit value index						
Exports	121,5	144,2	-0,9	18,7	138,3	26,5
Imports	124,2	147,5	-2,5	18,8	143,8	28,2

* Moving 12-month averages

Note. Base year is now 2020=100

Figure 2. Trade balance (EUR million) in combined SITC commodity groups in January-October 2021 and 2022

Finnish
Customs
Statistics

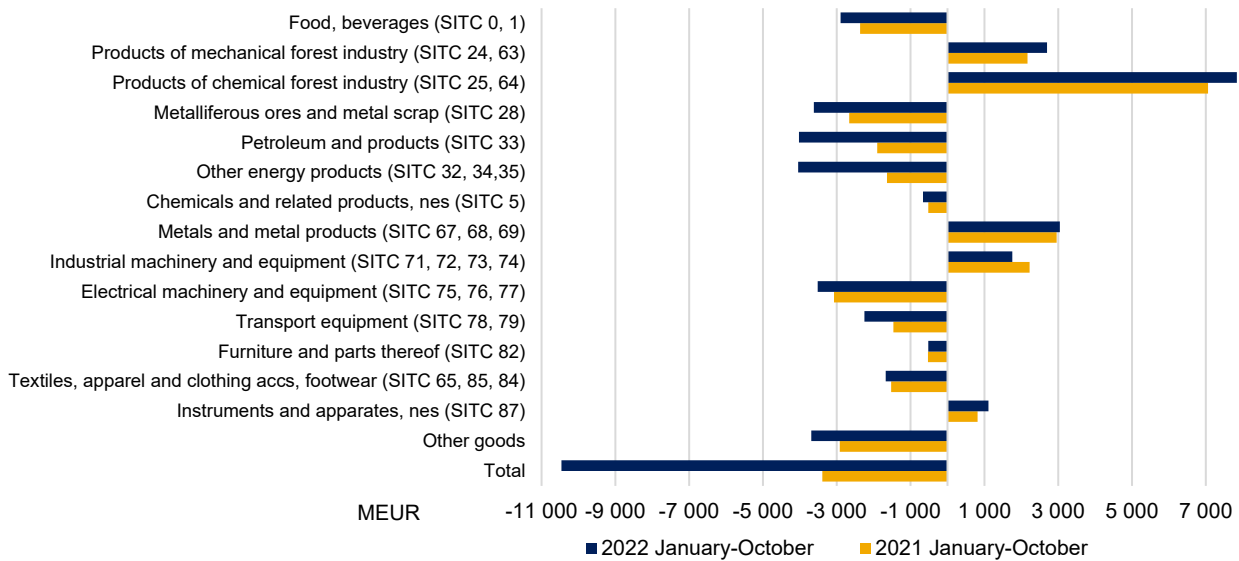


Table 3. Trade balance (EUR million) in combined SITC commodity groups in January-October 2021 and 2022

	Trade balance 2021 (01-10)	Trade balance 2022 (01-10)	Share of exports % 2022 (01-10)*	Share of imports % 2022 (01-10)*
Food, beverages (SITC 0, 1)	-2 369	-2 896	2,6	6,0
Products of mechanical forest industry (SITC 24, 63)	2 168	2 698	5,2	1,0
Products of chemical forest industry (SITC 25, 64)	7 059	7 840	12,9	1,0
Metalliferous ores and metal scrap (SITC 28)	-2 662	-3 620	3,4	7,6
Petroleum and products (SITC 33)	-1 906	-4 027	9,2	13,2
Other energy products (SITC 32, 34,35)	-1 641	-4 046	1,3	6,4
Chemicals and related products, nes (SITC 5)	-521	-665	11,5	10,8
Metals and metal products (SITC 67, 68, 69)	2 958	3 045	14,8	8,8
Industrial machinery and equipment (SITC 71, 72, 73, 74)	2 226	1 758	13,7	9,6
Electrical machinery and equipment (SITC 75, 76, 77)	-3 077	-3 516	7,5	11,0
Transport equipment (SITC 78, 79)	-1 464	-2 253	5,8	7,9
Furniture and parts thereof (SITC 82)	-530	-521	0,4	1,0
Textiles, apparel and clothing accs, footwear (SITC 65, 85, 84)	-1 528	-1 674	1,0	3,0
Instruments and apparatuses, nes (SITC 87)	815	1 109	3,5	1,6
Other goods	-2 920	-3 693	7,4	11,2
Total	-3 392	-10 461	100,0	100,0

* Share of total imports / exports

Figure 3. Volume index 2020–2022
2020 = 100

Finnish Customs
Statistics

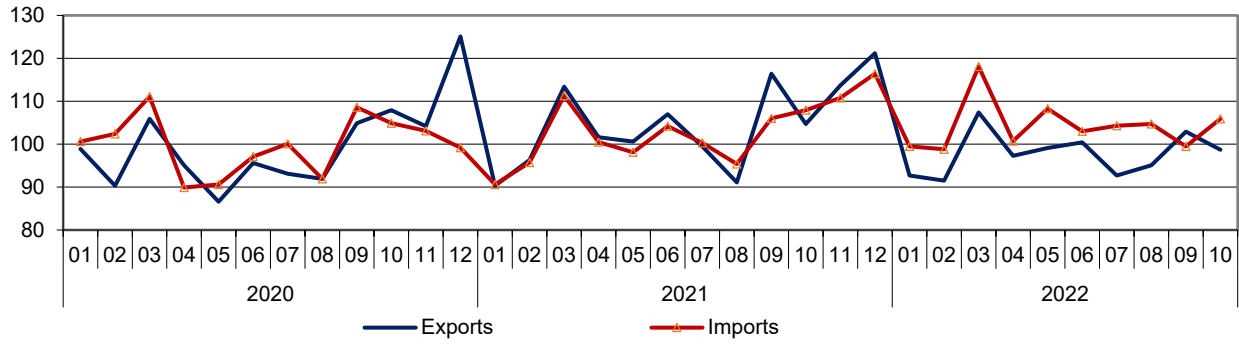


Figure 4. Unit value index and Terms of trade 2020–2022
2020 = 100

Finnish Customs
Statistics

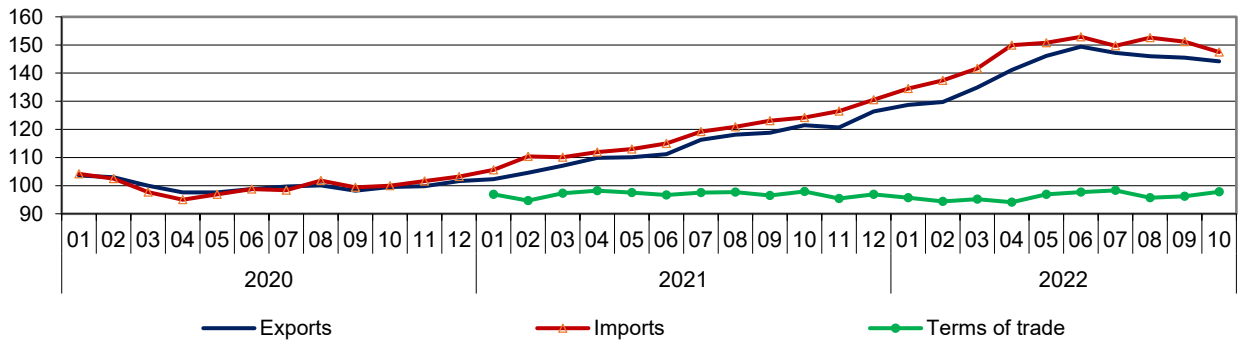


Figure 5. Exports by Products by Activity (CPA) 2019 – 2022

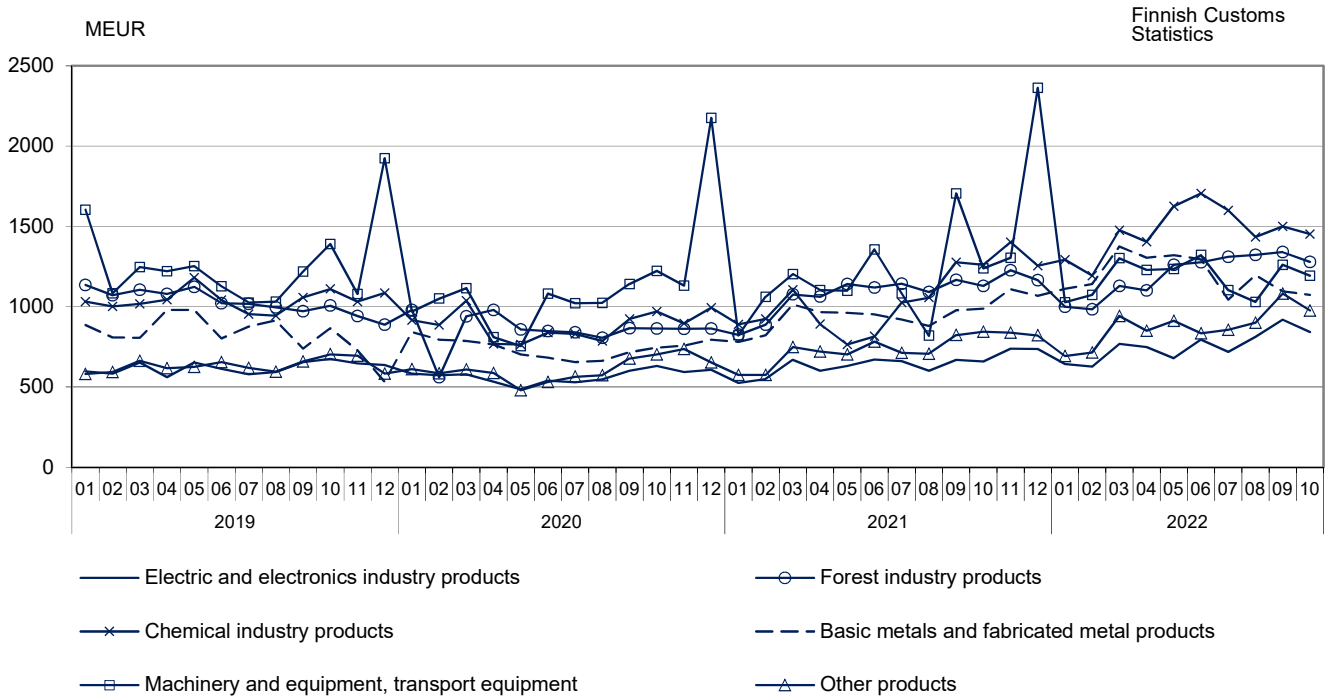


Figure 6. Imports by broad economic categories (BEC) 2019 – 2022

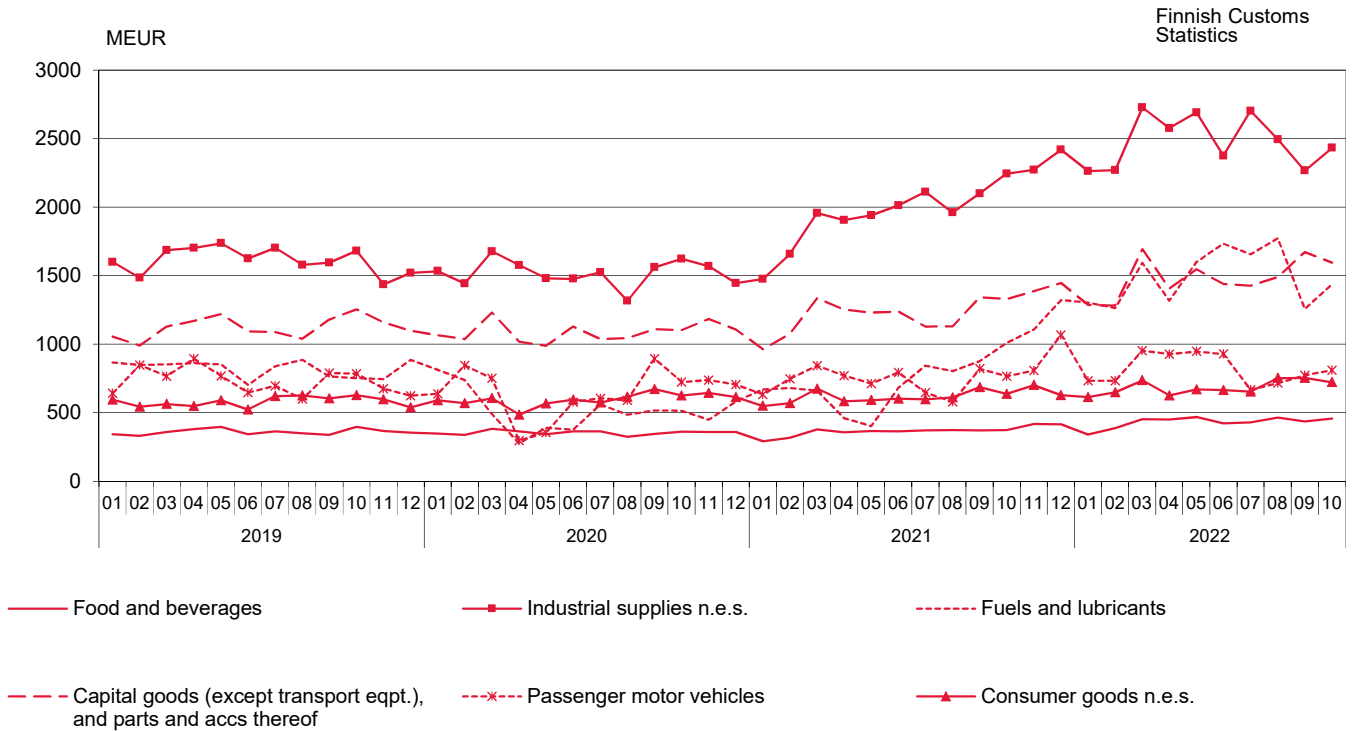


Figure 7. Volume index of Exports by months 2020–2022
2020 = 100

Finnish Customs
Statistics

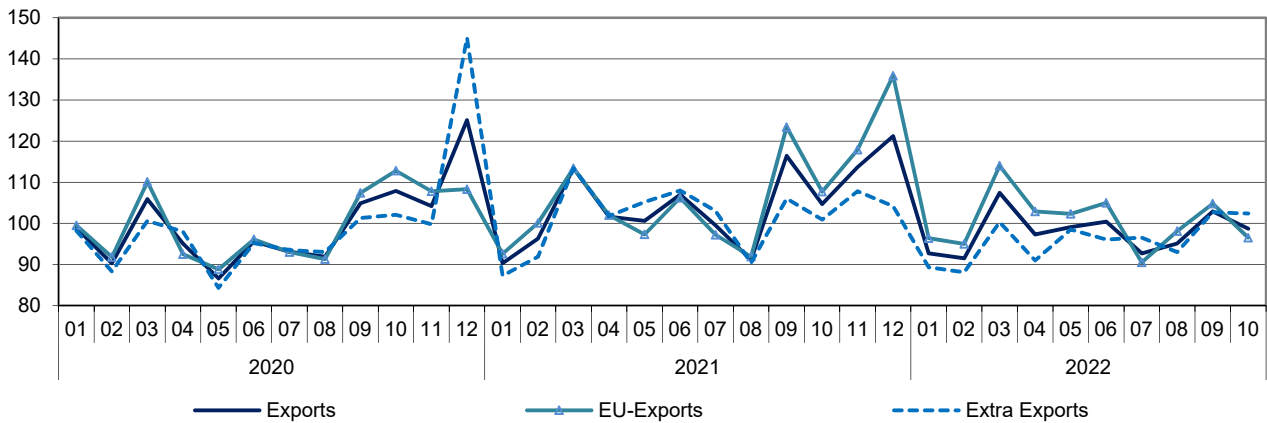


Figure 8. Volume index of Imports by months 2020–2022
2020 = 100

Finnish Customs
Statistics

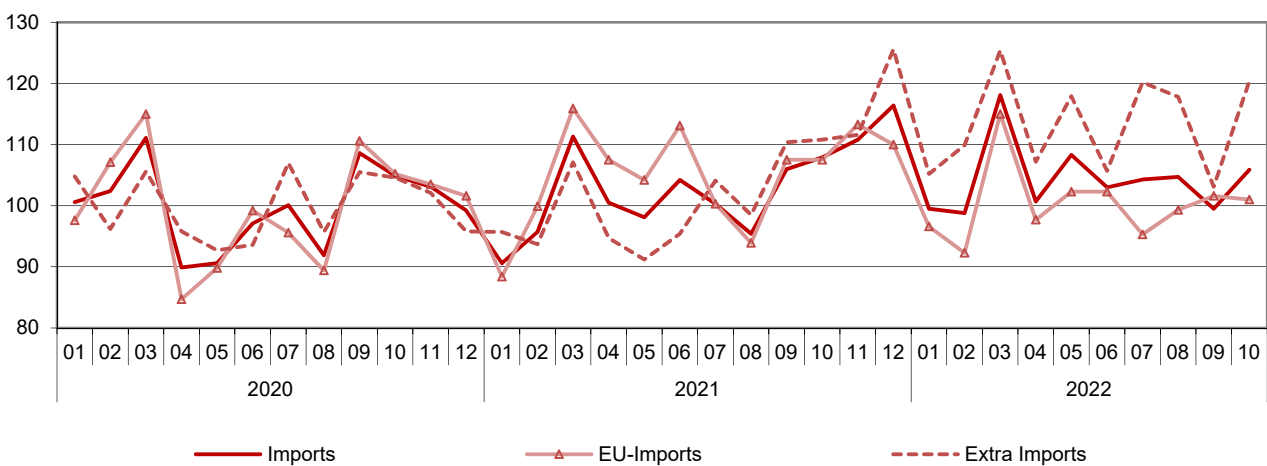


Figure 9. Unit value index of Exports by months 2020–2022
2020 = 100

Finnish Customs
Statistics

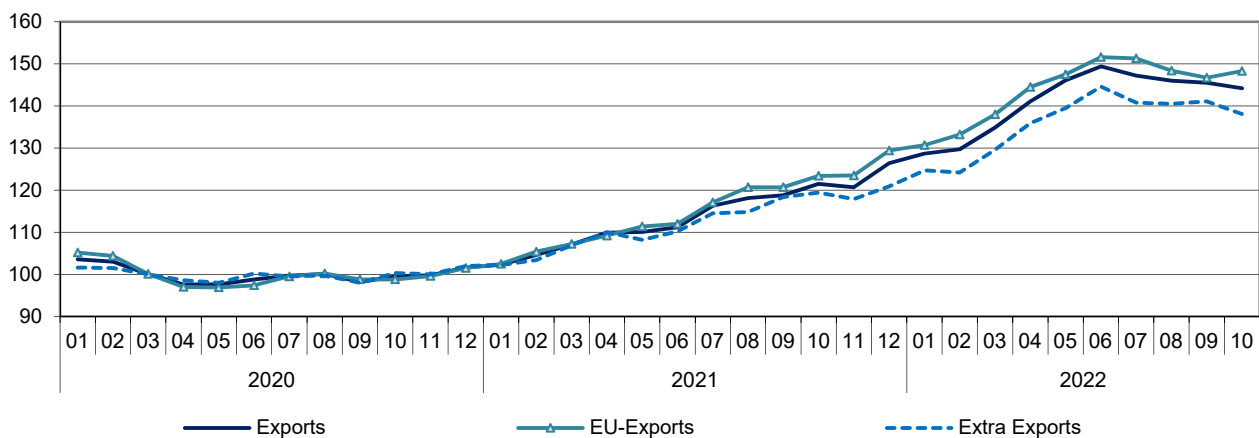


Figure 10. Unit value index of Imports by months 2020–2022
2020 = 100

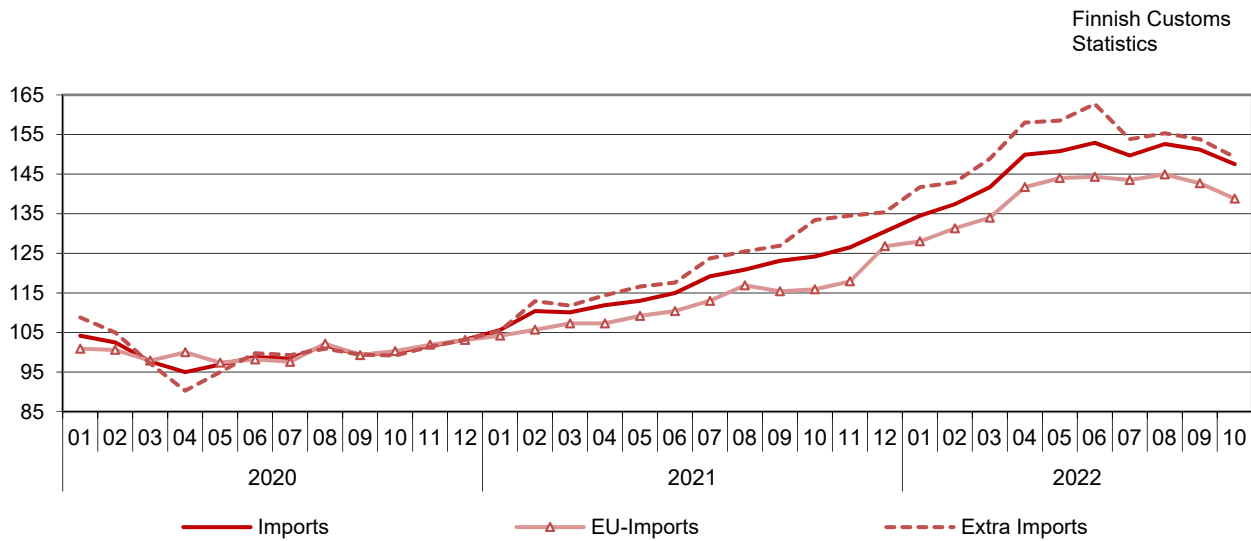


Table 4. International trade indexes
2020=100

	October		Change %		Average *	Change %
	2021:10	2022:10	2022:10/ 2022:09	2022:10/ 2021:10	2021:11–2022:10	2021:11–2022:10/ 2020:11–2021:10
Volume index						
Exports	104,7	98,7	-4,1	-5,7	101,1	-2,7
EU-Exports	107,7	96,5	-7,9	-10,4	104,9	1,2
Extra Exports	100,9	102,4	-0,3	1,4	97,5	-6,3
Imports	107,9	105,9	6,5	-1,9	105,8	4,8
EU-Imports	107,5	101,0	-0,6	-6,1	102,2	-1,1
Extra Imports	110,8	120,4	16,8	8,7	114,2	14,2
Unit value index						
Exports	121,5	144,2	-0,9	18,7	138,3	26,5
EU-Exports	123,4	148,3	1,1	20,2	141,1	28,2
Extra Exports	119,4	138,1	-2,1	15,6	133,1	22,7
Imports	124,2	147,5	-2,5	18,8	143,8	28,2
EU-Imports	115,9	138,8	-2,8	19,7	136,5	25,8
Extra Imports	133,4	149,3	-2,9	11,9	149,6	30,3
Terms of Trade	97,9	97,8	1,7	-0,1	96,2	

* Moving 12-month averages

Table 5. Exports by SITC

SITC Rev.4		October 2022			January-October 2022		
		value MEUR	share %	change %	value MEUR	share %	change %
	Total exports	6 819	100,0	11,4	66 758	100,0	21,7
0	Food and live animals	170	2,5	28,0	1 546	2,3	20,6
02	Dairy products and birds' eggs	46	0,7	39,9	466	0,7	25,2
05	Vegetables and fruit	4	0,1	-37,9	62	0,1	17,4
1	Beverages and tobacco	19	0,3	7,4	173	0,3	19,9
2	Crude materials, inedible, except fuels	726	10,7	5,7	7 482	11,2	11,5
212	Furskins, raw	28	0,4	40,6	225	0,3	-35,6
24	Cork and wood	182	2,7	-31,1	2 437	3,7	9,0
248	Wood, simply worked	171	2,5	-33,7	2 318	3,5	7,4
25	Pulp and waste paper	306	4,5	51,5	2 327	3,5	9,3
28	Metalliferous ores and metal scrap	189	2,8	4,0	2 274	3,4	25,7
3	Mineral fuels etc	728	10,7	30,5	7 052	10,6	93,4
33	Petroleum and products	658	9,6	41,0	6 155	9,2	96,2
4	Animal, vegetable oil, fat	2	0,0	3,4	27	0,0	22,2
5	Chemicals and related products, nes	717	10,5	1,1	7 666	11,5	25,6
51+52	Organic and inorganic chemicals	226	3,3	13,4	2 373	3,6	49,1
54	Medicinal, pharm. products	118	1,7	31,4	968	1,5	17,7
57+58	Plastics in primary and non-primary forms	196	2,9	-6,4	2 152	3,2	13,1
6	Basic manufactures	1 790	26,3	7,8	18 458	27,6	21,8
63	Wood and cork manufactures	97	1,4	-8,5	1 021	1,5	27,4
634	Plywood, particle board etc	71	1,0	16,8	650	1,0	24,9
64	Paper, paperboard and articles thereof	699	10,2	25,8	6 275	9,4	14,1
65	Textile yarn, fabrics, made up articles, etc	26	0,4	3,5	288	0,4	7,8
67	Iron and steel	452	6,6	-8,8	5 561	8,3	31,2
68	Non-ferrous metals	288	4,2	10,1	3 109	4,7	27,4
69	Manufactures of metals, nes	122	1,8	6,6	1 197	1,8	15,5
7	Machinery, transport equipmt	1 879	27,6	6,9	18 006	27,0	8,5
71	Power generating machinery and equipment	168	2,5	-0,9	1 829	2,7	19,3
72	Machinery for special industries	508	7,5	20,5	4 460	6,7	7,5
74	General industrl machy, nes	287	4,2	15,4	2 628	3,9	8,0
75	Office machines and adp machines	27	0,4	-29,9	303	0,5	-10,0
76	Telecomm, sound recording equipment	66	1,0	-6,0	718	1,1	-2,3
77	Electric machinery, nes and parts	473	6,9	43,3	3 972	5,9	31,4
78	Road vehicles	283	4,1	-33,9	3 303	4,9	0,3
79	Other transport equipment	38	0,6	21,0	562	0,8	-36,8
793	Ships and boats etc	31	0,5	81,1	432	0,6	5,5
8	Miscellaneous manufactured articles	493	7,2	24,2	4 025	6,0	16,6
82	Furniture and parts thereof	23	0,3	1,1	234	0,4	33,0
84	Articles of apparel and clothing accessories	37	0,5	47,6	243	0,4	18,5
85	Footwear	15	0,2	16,0	111	0,2	20,4
87	Instruments and apparatuses, nes	295	4,3	39,4	2 307	3,5	20,9
9	Goods not classified elsewhere	295	4,3	46,4	2 324	3,5	31,6

Table 6. Imports by SITC

SITC Rev.4	October 2022			January-October 2022		
	value MEUR	share %	change %	value MEUR	share %	change %
Total imports	7 785	100,0	16,2	77 220	100,0	32,5
0 Food and live animals	427	5,5	20,9	4 076	5,3	21,5
02 Dairy products and birds' eggs	37	0,5	22,4	369	0,5	14,0
05 Vegetables and fruit	91	1,2	5,6	883	1,1	-1,2
1 Beverages and tobacco	57	0,7	23,5	539	0,7	22,3
2 Crude materials, inedible, except fuels	777	10,0	14,5	7 354	9,5	25,7
212 Furskins, raw	6	0,1	-49,0	133	0,2	-18,2
24 Cork and wood	47	0,6	-22,0	425	0,6	-26,9
248 Wood, simply worked	5	0,1	-71,4	127	0,2	-17,6
25 Pulp and waste paper	15	0,2	30,6	172	0,2	109,3
28 Metalliferous ores and metal scrap	639	8,2	17,5	5 894	7,6	31,8
3 Mineral fuels etc	1 450	18,6	42,3	15 125	19,6	110,3
33 Petroleum and products	1 002	12,9	34,7	10 182	13,2	101,9
4 Animal, vegetable oil, fat	55	0,7	33,5	589	0,8	72,3
5 Chemicals and related products, nes	883	11,3	25,7	8 331	10,8	25,8
51+52 Organic and inorganic chemicals	272	3,5	41,7	2 450	3,2	52,3
54 Medicinal, pharm. products	222	2,9	28,5	2 014	2,6	7,2
57+58 Plastics in primary and non-primary forms	161	2,1	7,1	1 756	2,3	20,7
6 Basic manufactures	858	11,0	0,5	9 854	12,8	34,1
63 Wood and cork manufactures	28	0,4	-15,8	334	0,4	16,1
634 Plywood, particle board etc	14	0,2	-23,2	174	0,2	14,3
64 Paper, paperboard and articles thereof	57	0,7	8,8	591	0,8	21,2
65 Textile yarn, fabrics, made up articles, etc	61	0,8	3,8	647	0,8	6,0
67 Iron and steel	237	3,0	0,1	2 568	3,3	51,5
68 Non-ferrous metals	111	1,4	-20,0	1 891	2,4	65,1
69 Manufactures of metals, nes	215	2,8	12,4	2 363	3,1	23,3
7 Machinery, transport equipmt	2 311	29,7	12,4	22 018	28,5	16,4
71 Power generating machinery and equipment	196	2,5	16,2	2 160	2,8	36,3
72 Machinery for special industries	176	2,3	9,2	1 766	2,3	14,0
74 General industrl machy, nes	361	4,6	16,1	3 256	4,2	17,1
75 Office machines and adp machines	149	1,9	-6,1	1 444	1,9	-1,4
76 Telecomm, sound recording equipment	219	2,8	9,7	1 891	2,4	3,3
77 Electric machinery, nes and parts	582	7,5	24,3	5 173	6,7	33,5
78 Road vehicles	580	7,4	7,9	5 513	7,1	5,4
79 Other transport equipment	22	0,3	-22,6	605	0,8	46,6
793 Ships and boats etc	7	0,1	-46,4	331	0,4	102,0
8 Miscellaneous manufactured articles	644	8,3	5,3	6 007	7,8	10,8
82 Furniture and parts thereof	65	0,8	-11,7	755	1,0	6,9
84 Articles of apparel and clothing accessories	165	2,1	19,3	1 348	1,7	9,4
85 Footwear	40	0,5	41,5	321	0,4	28,6
87 Instruments and apparates, nes	123	1,6	5,8	1 198	1,6	9,7
9 Goods not classified elsewhere	324	4,2	-3,5	3 326	4,3	19,6

Table 7. Exports and imports by Products by Activity (CPA2015)

Products by Activity		Exports 2022				Imports 2022			
		October		January-October		October		January-October	
		value	value	share	change	value	value	share	change
		MEUR	MEUR	%	%	MEUR	MEUR	%	%
Total exports / imports		6 819	66 758	100,0	21,7	7 785	77 220	100	32,5
A	Products of agriculture, forestry and fishing	79	660	1,0	0,6	177	1 788	2,3	12,6
B	Products from mining and quarrying	72	934	1,4	10,6	1 173	11 161	14,5	79,3
061	Crude petroleum	-	0	0,0	21,3	616	6 032	7,8	117,7
C	Manufactured goods	6 339	62 221	93,2	21,4	5 797	56 904	73,7	25,7
10-12	Food, beverages and tobacco	157	1 463	2,2	17,8	393	3 636	4,7	18,5
13-15	Textiles, clothes, leather and leather products	83	684	1,0	14,2	265	2 306	3	19,3
16-18	Forest industry products	1 279	12 011	18,0	12,8	118	1 386	1,8	12,5
16	Wood and wood products	276	3 421	5,1	12,9	44	614	0,8	-5,0
17	Paper, paper and paperboard products, pulp	1 004	8 589	12,9	12,8	74	768	1	32,0
19-22	Chemical industry products	1 452	14 681	22,0	46,6	1 495	14 896	19,3	38,1
19	Coke and petroleum products	599	5 492	8,2	91,0	432	4 488	5,8	90,3
20	Chemicals and chemical products	579	6 572	9,8	35,3	655	6 447	8,3	37,0
21	Pharmaceutical products and pharmaceutical preparations	126	1 065	1,6	18,0	230	2 055	2,7	8,1
22	Rubber and plastic products	148	1 552	2,3	12,5	179	1 905	2,5	4,8
23	Other non-metallic mineral products	58	548	0,8	8,9	98	911	1,2	23,5
24-25	Metal and metal products	1 074	11 960	17,9	29,0	793	8 640	11,2	48,3
24	Basic metals	928	10 580	15,8	31,9	560	6 164	8	61,2
25	Fabricated metal products (excl. machinery and equipment)	146	1 379	2,1	10,8	233	2 475	3,2	23,8
26-27	Electric and electronics industry products	842	7 561	11,3	21,1	1 089	9 897	12,8	19,9
26	Computers, electronic and optical products	375	3 437	5,1	16,4	636	5 613	7,3	13,5
263	Communication equipment	50	570	0,9	-6,8	159	1 342	1,7	6,0
27	Electrical equipment	467	4 124	6,2	25,3	453	4 284	5,5	29,4
28	Machinery and equipment	882	7 951	11,9	8,2	676	6 421	8,3	19,4
29-30	Transport equipment	313	3 827	5,7	-7,8	667	6 861	8,9	8,7
29	Motor vehicles	261	3 039	4,6	-2,0	600	5 771	7,5	3,8
30	Other transport equipment	52	788	1,2	-24,9	67	1 090	1,4	45,3
31-33	Other manufactured goods	199	1 536	2,3	23,4	203	1 951	2,5	10,9
D	Electricity, gas, steam, air conditioning *	66	725	1,1	73,8	178	2 352	3	104,3
E-X	Other products	263	2 218	3,3	30,8	460	5 015	6,5	24,7
E 381158	Metal waste	0	0	0,0	-100,0	0	2	0	-99,8

* Natural gas B 062

Starting from the statistical year 2022, international trade in goods statistics by CPA-classification are published only according to CPA2015 classification.

Table 8. Imports and exports by BEC goods classification (Broad Economic Categories)

BEC Rev.4		October 2022			January-October 2022		
		value MEUR	share %	change %	value MEUR	share %	change %
Total imports		7 785	100,0	16,2	77 220	100,0	32,5
1	Food and beverages	459	5,9	22,2	4 325	5,6	20,9
2	Industrial supplies not elsewhere specified	2 433	31,2	8,3	24 800	32,1	28,0
3	Fuels and lubricants	1 438	18,5	42,5	14 937	19,3	110,5
31	Primary	820	10,5	26,7	8 097	10,5	128,7
32	Processed	618	7,9	70,7	6 840	8,9	92,4
4	Capital goods (except transport equipment), and parts and accessories thereof	1 597	20,5	20,0	14 847	19,2	23,3
5	Transport equipment and parts and accessories thereof	812	10,4	5,9	8 196	10,6	11,9
6	Consumer goods not elsewhere specified	724	9,3	13,5	6 855	8,9	12,1
61	Durable	131	1,7	-8,3	1 433	1,9	3,9
62	Semi-durable	294	3,8	21,1	2 701	3,5	21,0
63	Non-durable	299	3,8	18,5	2 721	3,5	8,7
7	Goods not elsewhere specified	323	4,2	-2,7	3 259	4,2	18,6
Total exports		6 819	100,0	11,4	66 758	100,0	21,7
1	Food and beverages	168	2,5	20,0	1 579	2,4	22,2
2	Industrial supplies not elsewhere specified	3 321	48,7	7,0	34 342	51,4	20,4
3	Fuels and lubricants	692	10,1	27,5	6 556	9,8	87,1
31	Primary	2	0,0	-79,5	124	0,2	284,2
32	Processed	690	10,1	29,2	6 432	9,6	85,2
4	Capital goods (except transport equipment), and parts and accessories thereof	1 756	25,7	25,9	15 644	23,4	15,5
5	Transport equipment and parts and accessories thereof	430	6,3	-27,0	4 965	7,4	-1,6
6	Consumer goods not elsewhere specified	277	4,1	26,1	2 309	3,5	20,8
61	Durable	31	0,5	-7,9	288	0,4	0,4
62	Semi-durable	104	1,5	25,6	864	1,3	23,1
63	Non-durable	142	2,1	37,6	1 156	1,7	25,5
7	Goods not elsewhere specified	176	2,6	32,8	1 363	2,0	30,0

Table 9. Trade by regions and countries

Origin/ destination	Imports 2022				Exports 2022				Trade 2022	
	October		January-October		October		January-October		October	January-October
	value MEUR	value MEUR	share %	change %	value MEUR	value MEUR	share %	change %	value MEUR	value MEUR
Total exports / imports	7 785	77 220	100,0	32,5	6 819	66 758	100	21,7	-966	-10 461
EU	4 157	41 930	54,3	22,9	3 746	38 173	57,2	24,9	-410	-3 756
Euro zone	2 613	26 585	34,4	18,1	2 475	26 209	39,3	23,0	-138	-376
External trade	3 629	35 290	45,7	46,2	3 073	28 585	42,8	17,6	-556	-6 705
Developing countries	1 665	14 724	19,1	43,4	1 166	10 647	15,9	22,1	-499	-4 077
Europe	5 384	57 109	74,0	28,3	4 565	46 759	70	18,6	-818	-10 350
EU	4 157	41 930	54,3	22,9	3 746	38 173	57,2	24,9	-410	-3 756
AT Austria	85	747	1,0	18,0	55	493	0,7	19,8	-30	-254
BE Belgium	135	1 440	1,9	13,8	234	2 388	3,6	30,9	99	948
BG Bulgaria	12	100	0,1	39,2	11	89	0,1	17,7	-1	-11
CY Cyprus	1	12	0,0	-6,8	1	25	0	41,4	0	13
CZ Czech Republic	87	934	1,2	12,0	48	470	0,7	30,5	-39	-464
DE Germany	944	9 946	12,9	13,0	756	8 096	12,1	10,5	-188	-1 850
DK Denmark	141	1 503	1,9	7,6	126	1 201	1,8	19,3	-15	-302
EE Estonia	312	2 788	3,6	46,4	243	2 718	4,1	42,0	-69	-70
ES Spain	104	1 391	1,8	3,4	94	1 042	1,6	26,5	-10	-349
FR France	187	1 678	2,2	14,6	216	2 106	3,2	24,3	29	428
GR Greece	6	145	0,2	27,0	16	170	0,3	18,3	10	25
HU Hungary	47	429	0,6	16,2	24	223	0,3	23,6	-23	-206
HR Croatia	3	38	0,0	2,1	5	47	0,1	35,1	2	9
IE Ireland	57	550	0,7	-0,5	17	195	0,3	-64,2	-40	-355
IT Italy	209	1 930	2,5	17,6	211	2 031	3	25,6	2	101
LT Lithuania	55	603	0,8	27,6	94	816	1,2	29,4	39	213
LU Luxembourg	10	106	0,1	48,1	3	35	0,1	14,6	-7	-71
LV Latvia	43	363	0,5	33,5	81	680	1	26,0	38	317
MT Malta	1	7	0,0	-12,3	1	8	0	-70,3	0	1
NL Netherlands	383	3 955	5,1	24,6	403	4 948	7,4	44,6	21	993
PL Poland	272	2 523	3,3	28,6	198	2 081	3,1	25,6	-74	-442
PT Portugal	44	466	0,6	26,0	21	200	0,3	35,1	-23	-266
RO Romania	28	276	0,4	10,8	17	209	0,3	55,7	-12	-67
SE Sweden	951	9 540	12,4	42,4	768	7 329	11	28,2	-184	-2 211
SI Slovenia - Slovenien - Slovenia	13	152	0,2	22,7	8	73	0,1	13,4	-5	-79
SK Slovakia	27	306	0,4	10,7	21	187	0,3	38,1	-7	-120
Rest of Europe	1 227	15 179	19,7	46,2	819	8 586	12,9	-3,0	-408	-6 594
CH Switzerland	81	689	0,9	39,1	151	1 197	1,8	20,3	70	507
GB United Kingdom	184	1 844	2,4	66,5	228	2 449	3,7	15,6	45	606
XI Northern Ireland	1	20	0,0	-21,9	6	51	0,1	23,4	4	31
IS Iceland	7	28	0,0	59,9	5	67	0,1	65,7	-2	39
NO Norway	518	5 516	7,1	310,9	217	1 890	2,8	34,0	-301	-3 626
RU Russia	286	5 789	7,5	-10,9	71	1 709	2,6	-43,7	-215	-4 080
TR Türkiye	97	849	1,1	41,4	108	896	1,3	17,9	11	47
UA Ukraine	6	76	0,1	-7,5	12	113	0,2	-40,9	7	38
North Africa	16	127	0,2	53,3	50	636	1	13,0	34	509
EG Egypt	6	59	0,1	78,3	21	374	0,6	14,6	15	315
MA Morocco	8	54	0,1	58,9	9	111	0,2	22,5	1	57
Rest of Africa	58	985	1,3	83,9	103	767	1,1	30,8	45	-218
ZA South Africa	15	210	0,3	27,9	38	385	0,6	38,9	23	175
Middle East	95	379	0,5	241,8	97	904	1,4	32,4	1	525
AE Arab Emirates	2	21	0,0	79,5	25	268	0,4	86,2	24	246
IL Israel	11	87	0,1	62,8	20	184	0,3	14,5	9	97
SA Saudi Arabia	2	28	0,0	10,5	23	242	0,4	-1,0	21	215
Rest of Asia	1 386	12 431	16,1	39,6	892	8 211	12,3	16,1	-494	-4 221
CN China	743	7 152	9,3	40,5	374	3 238	4,8	6,8	-369	-3 915
HK Hong Kong	8	79	0,1	60,1	7	83	0,1	-26,6	-1	4
ID Indonesia	43	212	0,3	41,4	49	227	0,3	17,1	6	15
IN India	71	537	0,7	60,1	77	596	0,9	38,1	6	58
JP Japan	95	776	1,0	18,7	136	1 544	2,3	22,3	41	768
KR South Korea	68	617	0,8	19,3	68	848	1,3	36,0	-1	231
KZ Kazakhstan	20	130	0,2	>999	28	181	0,3	126,6	8	51
MY Malaysia	41	433	0,6	7,4	20	153	0,2	32,0	-21	-281
PH Philippines	16	171	0,2	27,9	10	123	0,2	-18,8	-6	-49
SG Singapore	13	234	0,3	12,0	19	160	0,2	11,7	7	-75
TH Thailand	54	415	0,5	62,0	19	214	0,3	0,7	-35	-202
TW Taiwan	104	724	0,9	110,7	19	211	0,3	-17,4	-85	-513
North America	516	3 851	5,0	61,3	821	6 464	9,7	46,7	305	2 613
CA Canada	50	698	0,9	62,2	124	838	1,3	21,1	75	140
US USA	466	3 153	4,1	61,2	696	5 624	8,4	51,5	230	2 471
Middle America	50	431	0,6	-9,0	91	630	0,9	47,7	41	198
MX Mexico	22	239	0,3	-22,0	78	508	0,8	98,3	56	269
South America	177	1 357	1,8	33,4	126	1 607	2,4	48,4	-51	250
AR Argentina	2	14	0,0	29,7	8	347	0,5	408,2	6	333
BR Brazil	93	697	0,9	81,8	69	671	1	67,6	-25	-26
CL Chile	5	80	0,1	-69,3	25	230	0,3	30,8	20	150
CO Colombia	41	239	0,3	301,9	6	118	0,2	49,7	-35	-121
Oceania	104	549	0,7	118,6	74	782	1,2	21,6	-30	233
AU Australia	97	442	0,6	107,4	66	701	1,1	22,2	-31	259

Table 10. Volume index, exports 2020=100

Products by Activity (CPA2015)	October 2022:10	Change	Change	Effect*	Mean** 2021:11- 2022:10	Change	Weights 2021
		2022:10/ 2022:09	2022:10/ 2021:10	% pp		2021:11-2022:10/ 2020:11-2021:10	
Total exports	98,7	-4,1	-5,7	-5,70	101,1	-2,7	1000,0
01 Products of agriculture and hunting	122,7	-45,0	31,2	0,33	89,0	-27,8	7,5
10 Food products	92,8	-6,1	-3,2	-0,13	93,4	-6,0	19,0
11 Beverages	136,1	0,8	1,1	0,00	128,4	15,3	2,7
13 Textiles	84,9	-12,4	-14,9	-0,15	97,8	-6,4	5,0
14 Wearing apparel	142,2	-8,9	25,9	0,23	94,7	2,8	3,5
15 Leather and related products	140,8	-1,8	9,1	0,04	114,6	8,1	2,3
16 Wood and wood products	95,2	-12,3	-11,3	-0,94	106,1	-2,7	54,6
171 Pulp, paper and paperboard	91,5	-3,3	-5,5	-1,53	91,8	-12,3	130,8
172 Articles of paper and paperboard	107,2	-2,4	-6,0	-0,07	107,7	7,6	3,9
19 Coke and refined petroleum products	72,6	-0,3	-24,1	-2,57	78,8	-2,0	54,7
20 Chemicals and chemical products	98,3	-13,1	-13,1	-2,27	109,7	4,0	88,8
21 Basic pharmaceutical products and preparations	126,4	45,1	18,3	0,58	96,7	-14,8	16,3
22 Rubber and plastic products	92,0	-17,9	-20,6	-1,07	106,7	-0,4	24,2
23 Other non-metallic mineral products	116,9	-2,8	-4,7	-0,10	115,4	0,0	8,3
241 Basic iron and steel and ferro-alloys	85,1	3,5	-20,7	-2,71	102,4	-6,5	67,9
244 Basic precious and other non-ferrous metals	89,0	1,5	8,1	0,97	91,2	-2,9	66,4
25 Fabricated metal products	108,5	-6,0	6,7	0,26	104,0	-2,9	20,0
26 Computer, electronic and optical products	127,4	-10,2	13,0	1,48	120,8	10,3	53,5
27 Electrical equipment	144,7	-12,5	35,0	4,32	131,2	27,3	59,2
28 Machinery and equipment	112,2	1,9	4,8	1,34	102,9	0,3	129,3
29 Motor vehicles and trailers	89,7	-15,7	-34,7	-5,30	108,6	-1,7	57,5
38 Waste collection, treatment and disposal services	132,3	-3,3	12,5	0,22	110,2	13,6	0,3
58 Publishing services	164,8	70,8	41,9	0,04	112,6	10,2	0,5

*Effect of change

** Moving 12-month averages

Table 11. Volume index, imports 2020=100

Products by Activity (CPA2015)	October 2022:10	Change 2022:10/ 2022:09	Change 2022:10/ 2021:10	Effect* 2022:10/ 2021:10	Mean** 2021:11- 2022:10	Change 2021:11-2022:10/ 2020:11-2021:10	Weights 2021 %
Total imports	105,9	6,5	-1,9	-1,90	105,8	4,8	1000,0
01 Products of agriculture and hunting	78,6	-4,9	-9,7	-0,16	98,7	-1,5	19,2
061 Crude petroleum	90,9	140,9	-12,1	-0,29	87,0	16,9	49,2
07 Metal ores	158,7	36,7	18,3	0,68	119,6	-0,4	39,7
10 Food products	93,2	5,6	1,4	0,06	91,5	-2,6	44,0
13 Textiles	72,7	-1,5	-11,6	-0,12	78,0	-13,6	9,4
14 Wearing apparel	121,3	-13,2	22,2	0,42	98,1	9,8	15,8
15 Leather and related products	132,5	-3,2	30,2	0,19	110,5	15,1	5,7
16 Wood and wood products	48,8	-27,6	-54,4	-0,61	80,4	-17,5	10,7
19 Coke and refined petroleum products	104,0	-32,0	26,9	0,65	110,2	14,1	39,7
20 Chemicals and chemical products	121,9	11,3	13,9	1,03	113,6	10,7	80,6
21 Basic pharmaceutical products and preparations	107,5	-0,5	13,6	0,42	97,0	-3,3	31,3
22 Rubber and plastic products	93,9	-2,6	-17,7	-0,56	103,2	-5,7	29,7
23 Other non-metallic mineral products	113,1	1,4	3,3	0,04	107,7	4,9	12,2
241 Basic iron and steel and ferro-alloys	101,3	41,8	-16,4	-0,16	111,2	8,7	21,0
244 Basic precious and other non-ferrous metals	120,1	-3,7	10,9	0,17	119,8	32,5	37,5
25 Fabricated metal products	115,4	-5,9	-1,9	-0,07	126,1	7,6	33,1
26 Computer, electronic and optical products	119,8	-1,0	-0,5	-0,05	114,4	2,1	86,2
27 Electrical equipment	131,7	-7,6	2,8	0,19	128,5	16,7	57,0
28 Machinery and equipment	127,5	-6,3	7,3	0,73	123,4	12,7	88,9
29 Motor vehicles and trailers	110,1	5,1	-6,1	-0,64	108,5	-3,3	93,3
35 Electricity, gas, steam and air conditioning Waste collection, treatment	79,2	18,3	-19,8	-0,19	101,0	-9,1	23,8
38 and disposal services	120,1	38,4	5,4	0,09	125,5	23,2	0,4

*Effect of change

** Moving 12-month averages

Table 12. Unit value index, exports 2020=100

Products by Activity (CPA2015)	October 2022:10	Change	Change	Effect*	Mean** 2021:11- 2022:10	Change	Weights 2021
		2022:10/ 2022:09	2022:10/ 2021:10	pp 2022:10/ 2021:10		2021:11- 2022:10	
Total exports	144,2	-0,9	18,7	18,70	138,3	26,5	1000,0
01 Products of agriculture and hunting	116,7	-4,3	7,8	0,03	121,6	4,8	7,5
10 Food products	138,5	0,9	30,3	0,53	123,1	19,7	19,0
11 Beverages	113,5	-0,5	9,1	0,01	108,0	7,9	2,7
13 Textiles	119,6	2,9	14,1	0,05	111,2	9,2	5,0
14 Wearing apparel	125,8	4,5	20,6	0,07	111,8	9,6	3,5
15 Leather and related products	122,7	3,2	9,3	0,01	114,1	7,7	2,3
16 Wood and wood products	143,6	-4,5	-16,3	-0,90	161,0	21,2	54,6
171 Pulp, paper and paperboard	167,5	2,9	40,9	4,85	140,9	30,8	130,8
172 Articles of paper and paperboard	141,4	4,2	30,0	0,10	124,4	20,4	3,9
19 Coke and refined petroleum products	282,5	15,0	80,5	5,80	234,4	82,7	54,7
20 Chemicals and chemical products	147,4	-1,3	15,7	1,26	148,3	31,6	88,8
21 Basic pharmaceutical products and preparations	129,4	-27,6	12,9	0,18	146,2	43,1	16,3
22 Rubber and plastic products	137,9	3,0	21,0	0,43	122,9	15,9	24,2
23 Other non-metallic mineral products	123,3	1,6	19,3	0,13	113,4	11,8	8,3
241 Basic iron and steel and ferro-alloys	172,2	-5,7	14,0	0,89	177,8	47,2	67,9
244 Basic precious and other non-ferrous metals	162,5	-0,5	21,8	1,47	164,7	34,1	66,4
25 Fabricated metal products	117,4	0,6	5,3	0,09	112,8	10,4	20,0
26 Computer, electronic and optical products	110,5	0,2	5,1	0,22	107,7	6,3	53,5
27 Electrical equipment	106,0	6,1	1,1	0,05	99,9	-3,3	59,2
28 Machinery and equipment	114,2	-2,7	10,0	1,13	111,2	8,3	129,3
29 Motor vehicles and trailers	99,5	-1,4	-1,4	-0,07	101,8	2,9	57,5
38 Waste collection, treatment and disposal services	169,0	-4,5	17,6	0,16	173,4	31,5	0,3
58 Publishing services	143,7	13,6	55,2	0,02	114,2	12,8	0,5

*Effect of change

** Moving 12-month averages

Table 13. Unit value index, imports 2020=100

Products by Activity (CPA2015)	October 2022:10	Change	Change	Effect*	Mean** 2021:11- 2022:10	Change	Weights 2021
		% 2022:10/ 2022:09	% 2022:10/ 2021:10	pp 2022:10/ 2021:10		% 2021:11-2022:10/ 2020:11-2021:10	
Total imports	147,5	-2,5	18,8	18,8	143,8	28,2	1000
01 Products of agriculture and hunting	128,3	0,1	10	0,17	126,5	17,8	19,2
061 Crude petroleum	273,1	1,9	40,5	2,88	259,5	72,6	49,2
062 Natural gas	1241,1	-1,4	172,4	3,82	785,7	298,7	14
07 Metal ores	131,2	-11,7	0	-0,01	148,4	16,4	39,7
10 Food products	131,9	-0,4	24,2	1,01	121,4	17,8	44
13 Textiles	122,4	-3,3	15,9	0,16	117,6	16	9,4
14 Wearing apparel	119,8	2,1	12,6	0,2	109,7	8,8	15,8
15 Leather and related products	117,9	0,1	6,4	0,03	110,6	7	5,7
16 Wood and wood products	160,1	-1	23,8	0,24	140,6	23,6	10,7
19 Coke and refined petroleum products	258,1	19,1	42,1	1,77	234,4	63,9	39,7
20 Chemicals and chemical products	139,8	-4,2	9	0,63	143,7	25	80,6
21 Basic pharmaceutical products and preparations	122,7	-3,5	19,2	0,5	123,3	16,4	31,3
22 Rubber and plastic products	127,4	-1,2	13,3	0,32	120,5	13,2	29,7
23 Other non-metallic mineral products	126,1	1,2	19,7	0,2	118,6	17,4	12,2
241 Basic iron and steel and ferro-alloys	190,3	-1,5	15,8	0,33	189,4	52,5	21
244 Basic precious and other non-ferrous metals	162	1,6	3,5	0,13	171,3	22,3	37,5
25 Fabricated metal products	127,9	0,2	16,6	0,4	122,7	19,4	33,1
26 Computer, electronic and optical products	117,7	0,7	14,2	0,94	111,1	13,6	86,2
27 Electrical equipment	117,3	2,2	12,6	0,54	111,2	10,7	57
28 Machinery and equipment	115	-0,1	7,2	0,51	109,4	7,4	88,9
29 Motor vehicles and trailers	113	1,1	7,4	0,53	110,7	7,1	93,3
35 Electricity, gas, steam and air conditioning	431,2	-37,4	103,7	1,64	469,8	163	23,8
38 Waste collection, treatment and disposal services	171,1	-14	9,6	0,17	163,7	22,8	0,4

*Effect of change

** Moving 12-month averages

Monthly statistics on the international trade in goods, October 2022
2022:K10EN, 30.12.2022

Inquiries:

Riikonen, Johanna

tel. +358 40 332 1824

Telasuo, Christina

tel. +358 40 332 1828

E-mail: forename.surname@tulli.fi

The preliminary statistics and monthly statistics on the international trade for November 2022 will be published on the following dates:

Preliminary statistics 2022:E11 5.1.2023

Monthly statistics 2022:K11 31.1.2023

More specific data on countries and goods, as well as statistics on logistics, are available free of charge via the the Uljas statistical database (ULJAS) uljas.tulli.fi

ISSN 1796-0479 = Official Statistics of Finland (pdf)

ISSN 2342-2335 = Monthly statistics on the international trade in goods (online)

Contact information:

Finnish Customs
StatisticsOpastinsilta 12
PO Box 512
FI-00101 HelsinkiExchange + 358 295 5200
Statistics service + 358 295 52335
statistics@tulli.fi