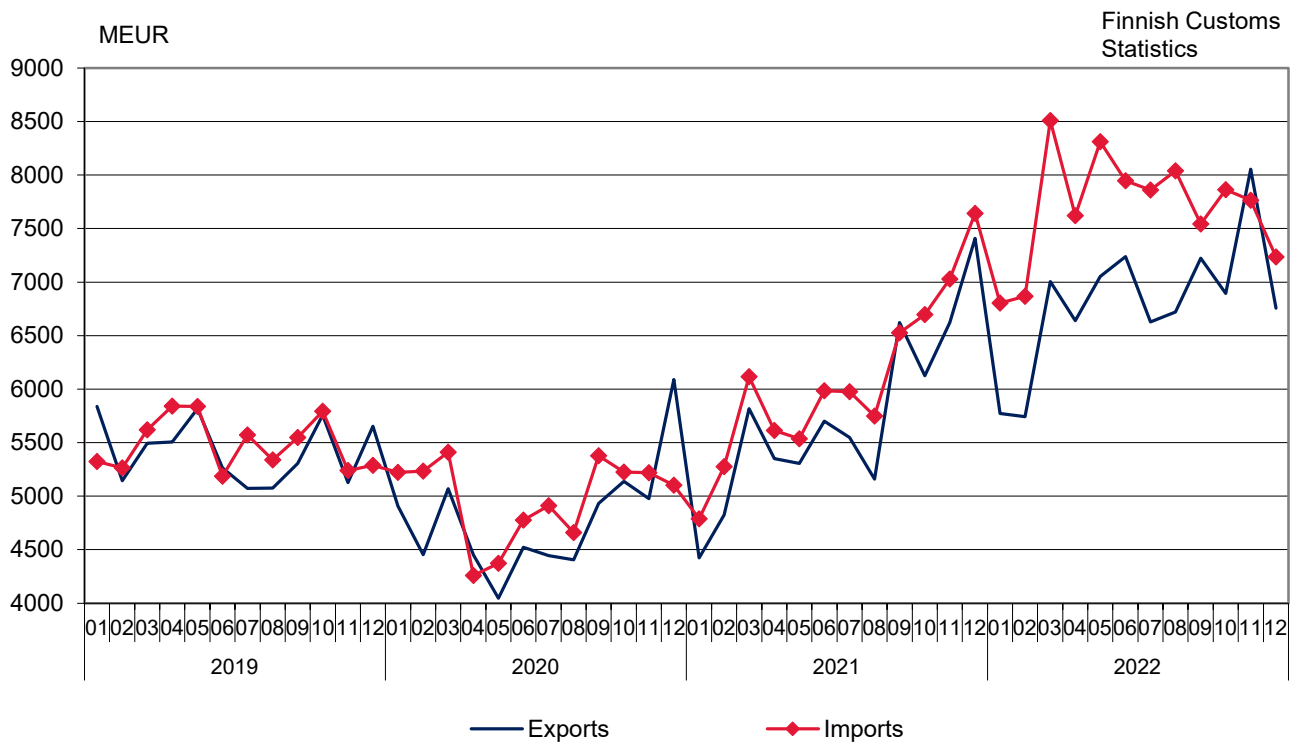


# Monthly statistics on the international trade in goods

## December 2022

Figure 1. Exports and imports of Finland 2019 – 2022



Helsinki 28.2.2023. Free for publication at 9.00 a.m.

Quoting is encouraged provided Finnish Customs is acknowledged as the source.

## Both export and import prices increased in December

The value of Finnish exports of goods decreased by 8.8 per cent year-on-year in December, according to the international trade in goods statistics provided by Finnish Customs. The value of Finnish exports was EUR 6.8 billion. Export volume decreased by 17.7 per cent, but export prices increased by 11.8 per cent year-on-year. The value of imports decreased by 5.3 per cent in December to EUR 7.2 billion. Import prices increased by 12.0 per cent, but import volume decreased by 14.7 per cent compared to December 2021. During the year 2022, the aggregated value of exports increased by 18.6 per cent and the value of imports by 26.6 per cent compared with the corresponding period last year. The 12-month moving average of export volume decreased by 4.9 per cent, but the 12-month moving average of import volume increased by 0.8 per cent in 2022.

In December 2022, the trade balance showed a deficit of EUR 476 million. In 2022, the trade balance had an aggregated deficit of EUR 10.6 billion. The deficit was EUR 6.6 billion higher than in the corresponding period last year. The aggregate trade surplus by commodity group for forest industry products increased in 2022 compared with 2021. The trade balance surplus in industrial machinery and equipment decreased from a year ago, but the trade balance surplus in metals increased. Trade balance deficit increased in the trade of energy products, ores and scrap metal and electrical machinery and equipment.

The terms of trade declined in December compared to the corresponding month of 2021 as export prices rose less than import prices. The point figure in December was 96.7, while it was 96.9 in December 2021. The terms of trade also declined from November 2022.

The value of exports of capital goods increased by 16.4 per cent in December, but the value of exports of industrial supplies decreased by 4.1 per cent year-on-year. The value of exports of fuels and lubricants increased by 47.2 per cent. The value of exports of consumer goods decreased by 3.0 per cent, but the value of exports of food and beverages increased by 15.6 per cent. The value of exports of transport equipment and parts decreased by 65.3 per cent.

The value of imports of industrial supplies decreased by 23.0 per cent in December, but the value of imports of capital goods rose by 14.9 per cent year-on-year. The value of imports of transport equipment and parts decreased by 38.1 per cent. The value of imports of fuels and lubricants rose by 17.7 per cent. The value of imports of food and beverages increased by 7.0 per cent and the value of imports of consumer goods by 5.6 per cent.

Exports to EU countries decreased by 16.2 per cent, but exports to non-EU countries increased by 3.6 per cent in December. Imports from EU countries decreased by 1.1 per cent and imports from outside the EU by 10.4 per cent in December. In 2022, total exports to EU countries increased by 17.9 per cent and exports to non-EU countries by 19.5 per cent. During the same period, imports from EU countries rose by 19.8 per cent and from outside the EU by 36.1 per cent.

**Table 1. Total development (e million)**

	December		Change %	January-December		Change %
	2021	2022		2021	2022	
Exports (fob)	7 410	6 758	-8,8	68 908	81 727	18,6
Imports (cif)	7 641	7 234	-5,3	72 936	92 366	26,6
Trade balance	-231	-476		-4 027	-10 639	

**Table 2. International trade indexes  
2020=100**

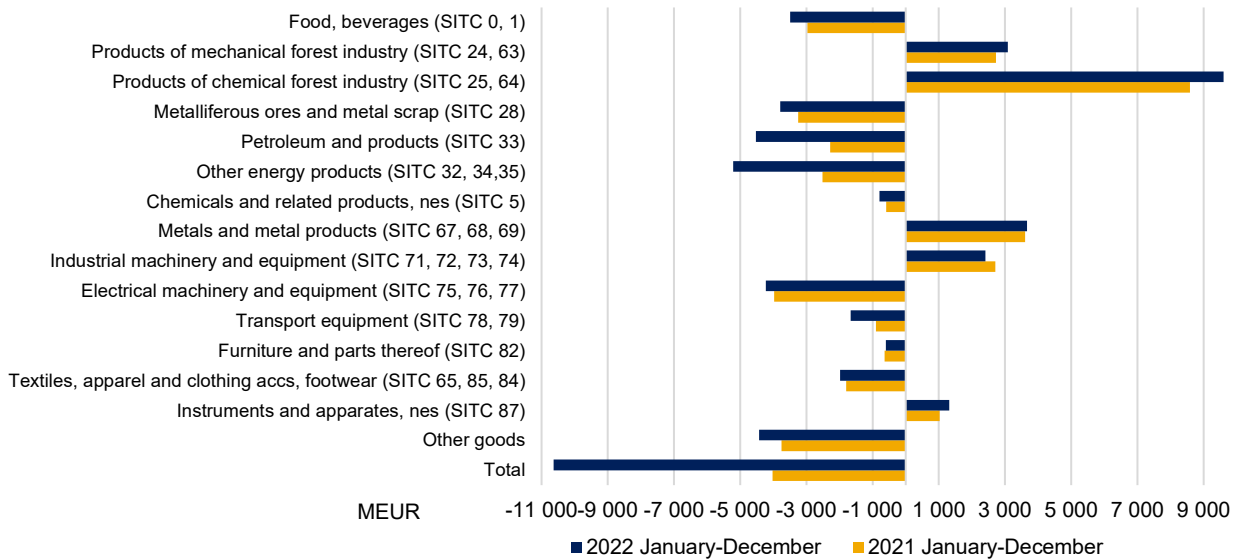
	December		Change %		Average *	Change %
	2021:12	2022:12	2022:12/ 2022:11	2022:12/ 2021:12		
<b>Volume index</b>						
Exports	121,2	99,8	-14,7	-17,7	99,6	-4,9
Imports	116,4	99,3	-5,5	-14,7	103,9	0,8
<b>Unit value index</b>						
Exports	126,4	141,4	-1,2	11,8	141,5	24,2
Imports	130,5	146,2	-0,6	12,0	146,8	24,9

\* Moving 12-month averages

Note. Base year is now 2020=100

**Figure 2. Trade balance (EUR million) in combined SITC commodity groups in January-December 2021 and 2022**

Finnish  
Customs  
Statistics



**Table 3. Trade balance (EUR million) in combined SITC commodity groups in January-December 2021 and 2022**

	Trade balance 2021 (01-12)	Trade balance 2022 (01-12)	Share of exports % 2022 (01-12)*	Share of imports % 2022 (01-12)*
Food, beverages (SITC 0, 1)	-2 968	-3 491	2,6	6,1
Products of mechanical forest industry (SITC 24, 63)	2 729	3 082	4,9	1,0
Products of chemical forest industry (SITC 25, 64)	8 582	9 597	12,9	1,0
Metalliferous ores and metal scrap (SITC 28)	-3 249	-3 790	3,7	7,3
Petroleum and products (SITC 33)	-2 286	-4 524	9,1	13,0
Other energy products (SITC 32, 34,35)	-2 517	-5 210	1,3	6,8
Chemicals and related products, nes (SITC 5)	-592	-796	11,1	10,7
Metals and metal products (SITC 67, 68, 69)	3 609	3 667	14,1	8,5
Industrial machinery and equipment (SITC 71, 72, 73, 74)	2 706	2 412	13,9	9,7
Electrical machinery and equipment (SITC 75, 76, 77)	-3 975	-4 223	7,5	11,2
Transport equipment (SITC 78, 79)	-902	-1 663	7,0	8,0
Furniture and parts thereof (SITC 82)	-640	-597	0,3	1,0
Textiles, apparel and clothing accs, footwear (SITC 65, 85, 84)	-1 796	-1 987	0,9	3,0
Instruments and apparatuses, nes (SITC 87)	1 021	1 311	3,4	1,6
Other goods	-3 749	-4 426	7,3	11,2
Total	-4 027	-10 639	100,0	100,0

\* Share of total imports / exports

**Figure 3. Volume index 2020–2022  
2020 = 100**

Finnish Customs  
Statistics

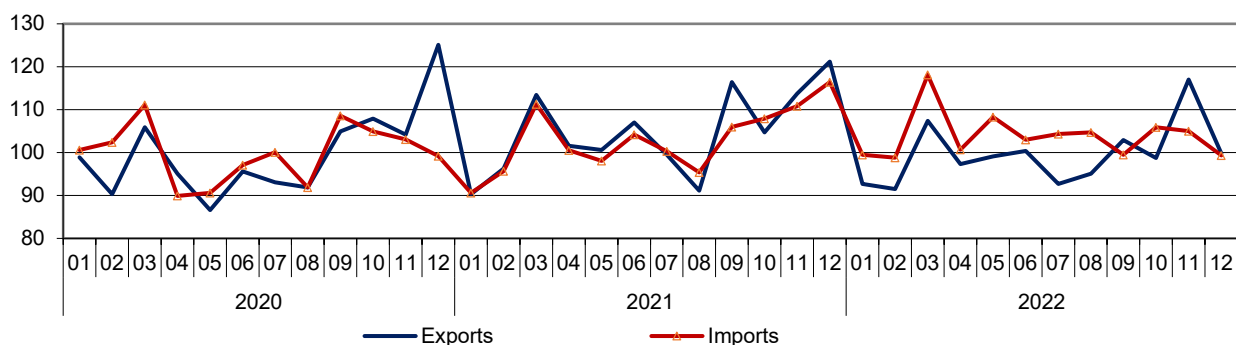
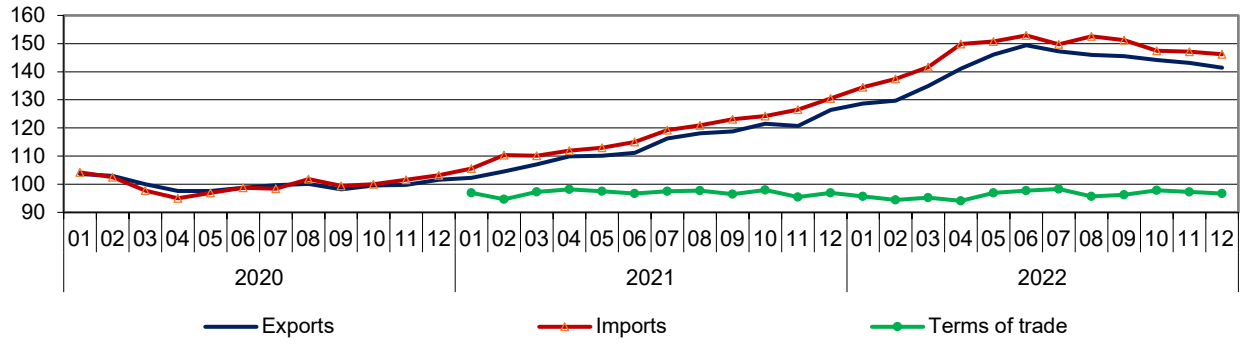
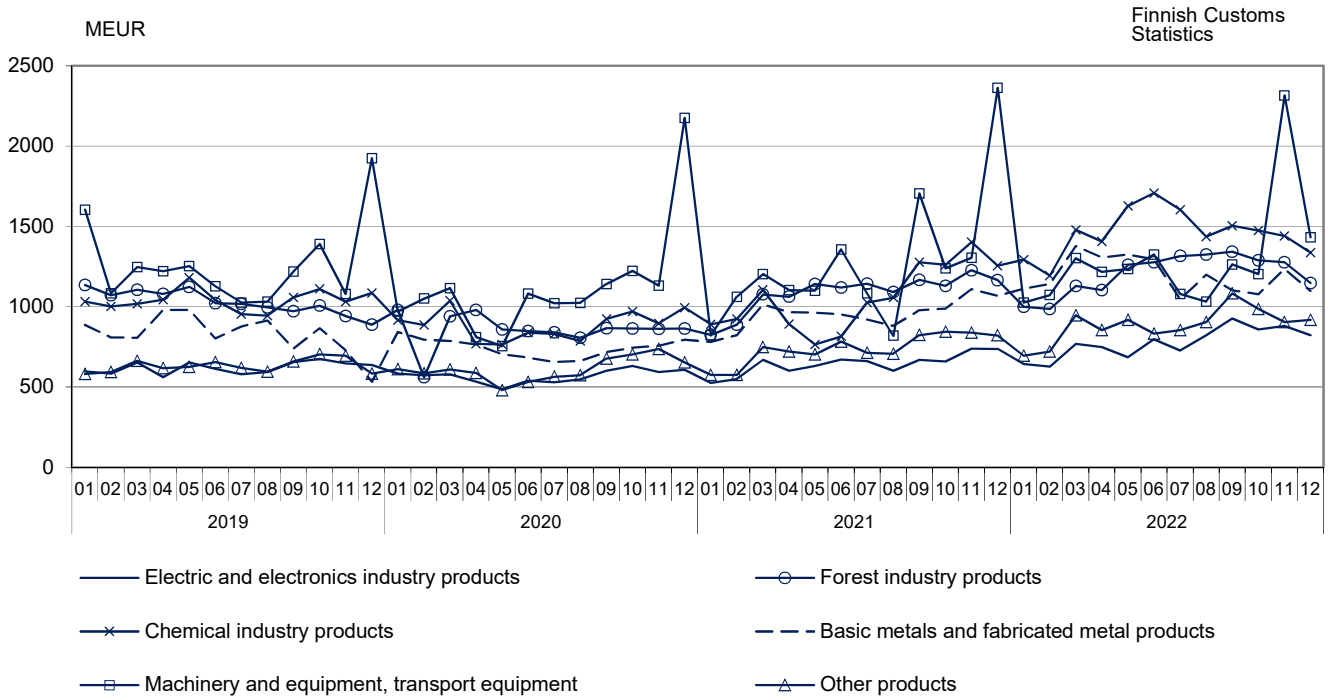


Figure 4. Unit value index and Terms of trade 2020–2022  
2020 = 100

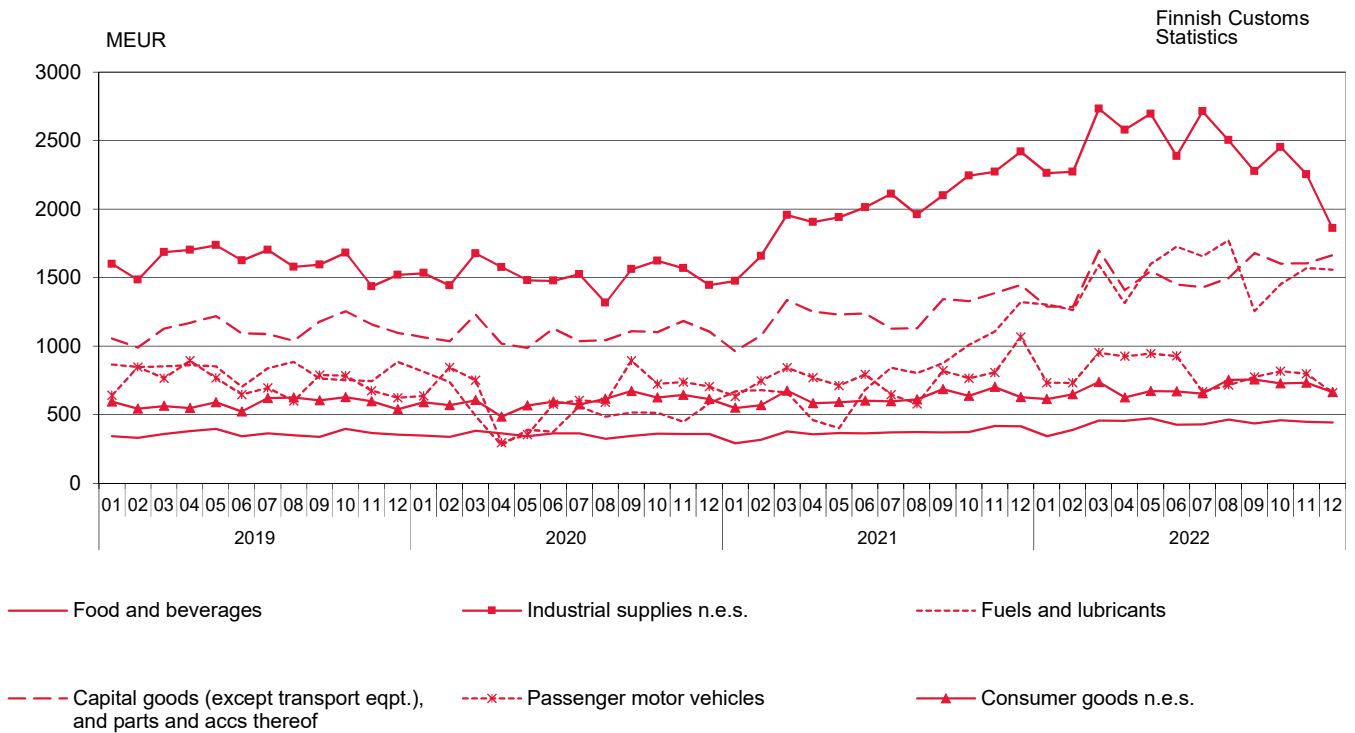
Finnish Customs  
Statistics



**Figure 5. Exports by Products by Activity (CPA) 2019 – 2022**

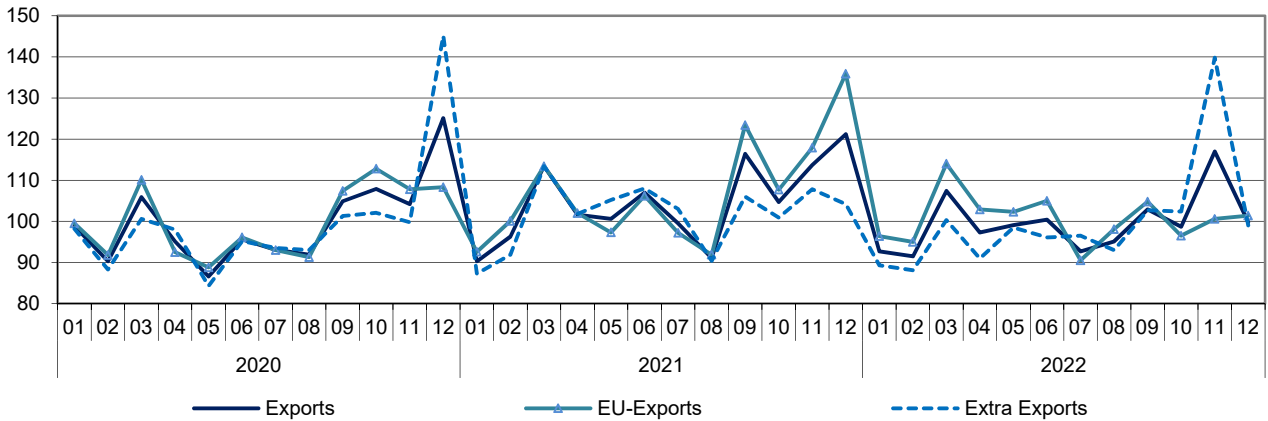


**Figure 6. Imports by broad economic categories (BEC) 2019 – 2022**



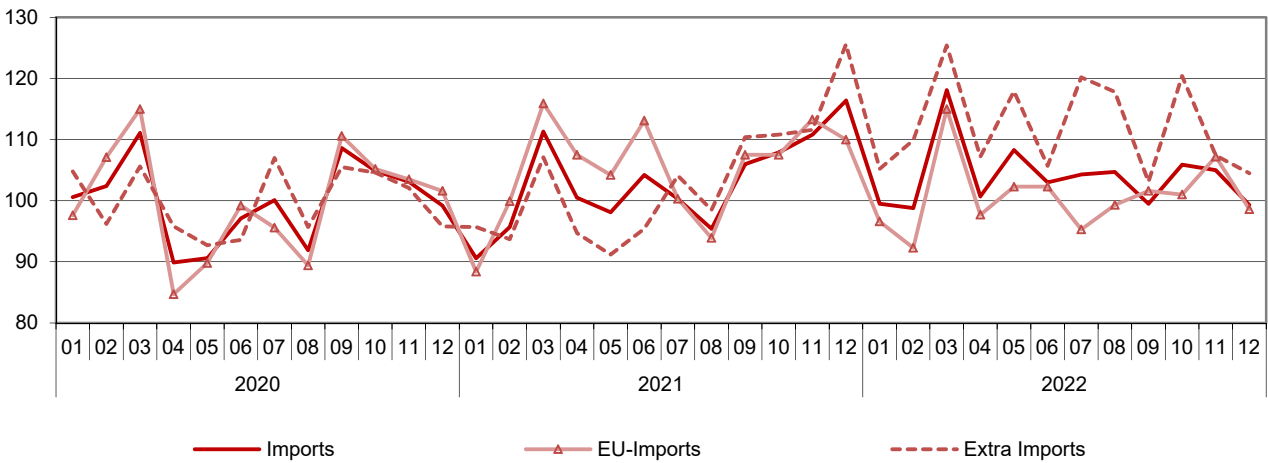
**Figure 7. Volume index of Exports by months 2020–2022**  
2020 = 100

Finnish Customs  
Statistics



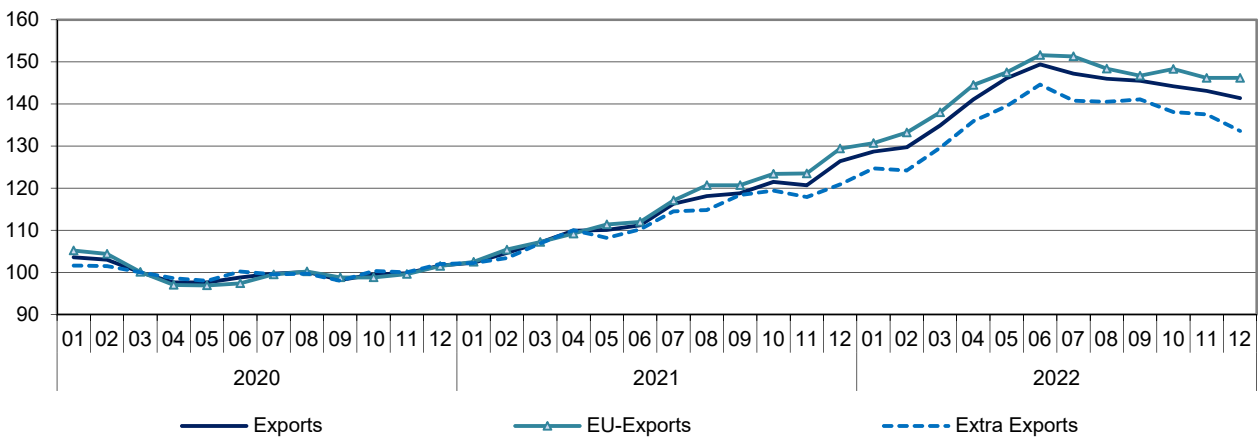
**Figure 8. Volume index of Imports by months 2020–2022**  
2020 = 100

Finnish Customs  
Statistics

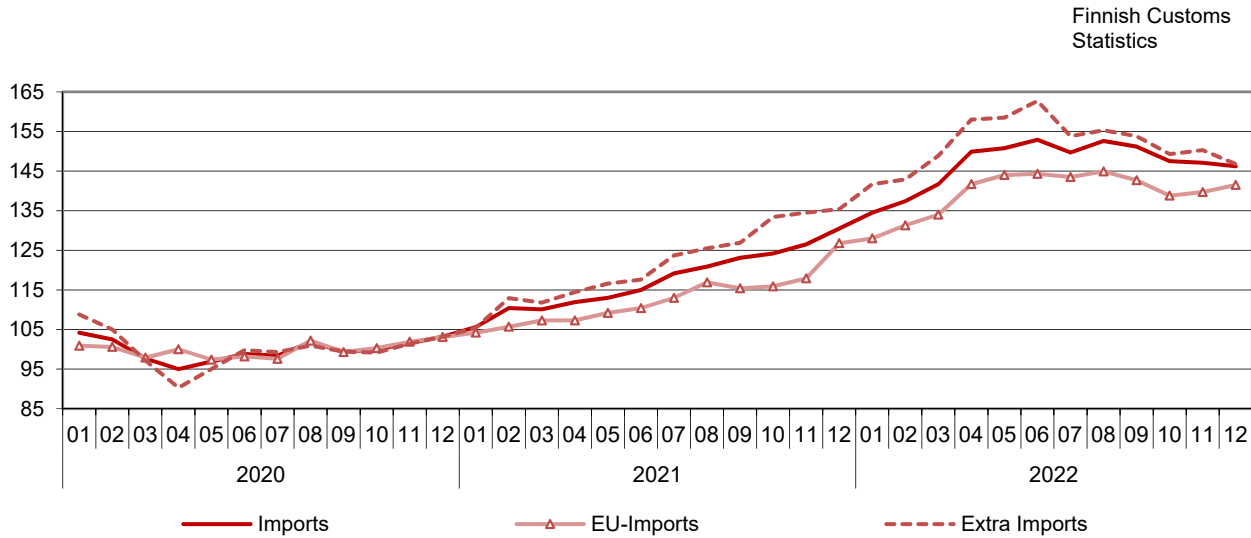


**Figure 9. Unit value index of Exports by months 2020–2022**  
2020 = 100

Finnish Customs  
Statistics



**Figure 10. Unit value index of Imports by months 2020–2022**  
2020 = 100



**Table 4. International trade indexes**  
2020=100

	December		Change %		Average *	Change %
	2021:12	2022:12	2022:12/ 2022:11	2022:12/ 2021:12	2022:01–2022:12	2022:01–2022:12/ 2021:01–2021:12
<b>Volume index</b>						
Exports	121,2	99,8	-14,7	-17,7	99,6	-4,9
EU-Exports	135,9	101,4	0,8	-25,3	100,6	-6,1
Extra Exports	104,2	99,0	-29,1	-4,9	99,7	-1,9
Imports	116,4	99,3	-5,5	-14,7	103,9	0,8
EU-Imports	110,0	98,6	-8,0	-10,4	100,8	-4,1
Extra Imports	125,6	104,5	-2,7	-16,8	112,1	8,5
<b>Unit value index</b>						
Exports	126,4	141,4	-1,2	11,8	141,5	24,2
EU-Exports	129,4	146,2	0,0	13,0	144,4	25,3
Extra Exports	120,9	133,6	-2,8	10,5	135,8	21,0
Imports	130,5	146,2	-0,6	12,0	146,8	24,9
EU-Imports	126,8	141,5	1,3	11,6	139,5	24,0
Extra Imports	135,4	146,8	-2,3	8,4	151,8	25,0
<b>Terms of Trade</b>	96,9	96,7	-0,6	-0,2	96,3	

\* Moving 12-month averages

**Table 5. Exports by SITC**

SITC Rev.4	December 2022			January-December 2022		
	value MEUR	share %	change %	value MEUR	share %	change %
<b>Total exports</b>	<b>6 758</b>	<b>100,0</b>	<b>-8,8</b>	<b>81 727</b>	<b>100,0</b>	<b>18,6</b>
<b>0 Food and live animals</b>	<b>155</b>	<b>2,3</b>	<b>16,3</b>	<b>1 913</b>	<b>2,3</b>	<b>22,5</b>
02 Dairy products and birds' eggs	44	0,6	35,9	558	0,7	27,4
05 Vegetables and fruit	5	0,1	-7,1	74	0,1	16,3
<b>1 Beverages and tobacco</b>	<b>16</b>	<b>0,2</b>	<b>11,5</b>	<b>209</b>	<b>0,3</b>	<b>18,6</b>
<b>2 Crude materials, inedible, except fuels</b>	<b>848</b>	<b>12,6</b>	<b>10,1</b>	<b>9 163</b>	<b>11,2</b>	<b>11,5</b>
212 Furskins, raw	4	0,1	-51,8	232	0,3	-35,3
24 Cork and wood	178	2,6	-26,5	2 816	3,4	1,8
248 Wood, simply worked	158	2,3	-31,0	2 662	3,3	0,0
25 Pulp and waste paper	292	4,3	13,8	2 878	3,5	10,4
28 Metalliferous ores and metal scrap	361	5,3	45,1	2 987	3,7	31,8
<b>3 Mineral fuels etc</b>	<b>774</b>	<b>11,5</b>	<b>45,5</b>	<b>8 529</b>	<b>10,4</b>	<b>76,8</b>
33 Petroleum and products	663	9,8	52,7	7 453	9,1	80,4
<b>4 Animal, vegetable oil, fat</b>	<b>3</b>	<b>0,0</b>	<b>51,6</b>	<b>33</b>	<b>0,0</b>	<b>27,3</b>
<b>5 Chemicals and related products, nes</b>	<b>620</b>	<b>9,2</b>	<b>-17,4</b>	<b>9 041</b>	<b>11,1</b>	<b>18,9</b>
51+52 Organic and inorganic chemicals	207	3,1	-3,1	2 825	3,5	40,7
54 Medicinal, pharm. products	107	1,6	-19,3	1 180	1,4	12,9
57+58 Plastics in primary and non-primary forms	138	2,0	-26,5	2 471	3,0	7,6
<b>6 Basic manufactures</b>	<b>1 566</b>	<b>23,2</b>	<b>-4,5</b>	<b>21 924</b>	<b>26,8</b>	<b>17,9</b>
63 Wood and cork manufactures	74	1,1	-19,3	1 193	1,5	18,4
634 Plywood, particle board etc	53	0,8	1,1	776	0,9	22,0
64 Paper, paperboard and articles thereof	618	9,1	6,7	7 644	9,4	14,4
65 Textile yarn, fabrics, made up articles, etc	25	0,4	-6,6	340	0,4	6,0
67 Iron and steel	415	6,1	-18,4	6 481	7,9	22,7
68 Non-ferrous metals	243	3,6	-6,9	3 634	4,4	21,9
69 Manufactures of metals, nes	118	1,7	20,0	1 448	1,8	15,4
<b>7 Machinery, transport equipmt</b>	<b>2 098</b>	<b>31,0</b>	<b>-28,9</b>	<b>23 176</b>	<b>28,4</b>	<b>8,1</b>
71 Power generating machinery and equipment	182	2,7	-3,1	2 248	2,8	20,3
72 Machinery for special industries	593	8,8	26,4	5 641	6,9	11,2
74 General industrl machy, nes	279	4,1	13,2	3 164	3,9	7,5
75 Office machines and adp machines	29	0,4	-32,7	361	0,4	-13,8
76 Telecomm, sound recording equipment	69	1,0	-28,2	876	1,1	-4,7
77 Electric machinery, nes and parts	428	6,3	24,3	4 876	6,0	30,7
78 Road vehicles	224	3,3	-47,1	3 881	4,7	-7,4
79 Other transport equipment	264	3,9	-76,2	1 838	2,2	-9,3
793 Ships and boats etc	258	3,8	-76,3	1 684	2,1	10,9
<b>8 Miscellaneous manufactured articles</b>	<b>390</b>	<b>5,8</b>	<b>-3,7</b>	<b>4 857</b>	<b>5,9</b>	<b>13,3</b>
82 Furniture and parts thereof	24	0,3	-5,8	285	0,3	23,9
84 Articles of apparel and clothing accessories	21	0,3	1,8	300	0,4	19,5
85 Footwear	9	0,1	3,9	132	0,2	17,5
87 Instruments and apparatuses, nes	235	3,5	-3,7	2 771	3,4	16,6
<b>9 Goods not classified elsewhere</b>	<b>288</b>	<b>4,3</b>	<b>36,6</b>	<b>2 882</b>	<b>3,5</b>	<b>31,3</b>



**Table 6. Imports by SITC**

SITC Rev.4		December 2022			January-December 2022		
		value MEUR	share %	change %	value MEUR	share %	change %
	<b>Total imports</b>	<b>7 234</b>	<b>100,0</b>	<b>-5,3</b>	<b>92 366</b>	<b>100,0</b>	<b>26,6</b>
<b>0</b>	<b>Food and live animals</b>	<b>417</b>	<b>5,8</b>	<b>5,7</b>	<b>4 948</b>	<b>5,4</b>	<b>19,5</b>
02	Dairy products and birds' eggs	40	0,6	28,2	448	0,5	15,9
05	Vegetables and fruit	92	1,3	-9,4	1 070	1,2	-1,8
<b>1</b>	<b>Beverages and tobacco</b>	<b>68</b>	<b>0,9</b>	<b>11,8</b>	<b>665</b>	<b>0,7</b>	<b>17,6</b>
<b>2</b>	<b>Crude materials, inedible, except fuels</b>	<b>559</b>	<b>7,7</b>	<b>-26,8</b>	<b>8 616</b>	<b>9,3</b>	<b>19,3</b>
212	Furskins, raw	46	0,6	-23,5	195	0,2	-16,3
24	Cork and wood	51	0,7	-6,6	547	0,6	-21,1
248	Wood, simply worked	4	0,1	-66,3	136	0,1	-24,8
25	Pulp and waste paper	29	0,4	110,3	225	0,2	114,0
28	Metalliferous ores and metal scrap	372	5,1	-35,8	6 776	7,3	22,8
<b>3</b>	<b>Mineral fuels etc</b>	<b>1 559</b>	<b>21,6</b>	<b>17,4</b>	<b>18 263</b>	<b>19,8</b>	<b>89,7</b>
33	Petroleum and products	924	12,8	48,0	11 977	13,0	86,6
<b>4</b>	<b>Animal, vegetable oil, fat</b>	<b>59</b>	<b>0,8</b>	<b>20,3</b>	<b>713</b>	<b>0,8</b>	<b>63,6</b>
<b>5</b>	<b>Chemicals and related products, nes</b>	<b>680</b>	<b>9,4</b>	<b>-13,1</b>	<b>9 838</b>	<b>10,7</b>	<b>20,0</b>
51+52	Organic and inorganic chemicals	171	2,4	-21,1	2 866	3,1	40,6
54	Medicinal, pharm. products	201	2,8	-4,9	2 430	2,6	6,0
57+58	Plastics in primary and non-primary forms	133	1,8	-14,0	2 043	2,2	14,5
<b>6</b>	<b>Basic manufactures</b>	<b>721</b>	<b>10,0</b>	<b>-12,5</b>	<b>11 452</b>	<b>12,4</b>	<b>26,4</b>
63	Wood and cork manufactures	19	0,3	-34,0	379	0,4	7,8
634	Plywood, particle board etc	8	0,1	-46,9	193	0,2	3,8
64	Paper, paperboard and articles thereof	47	0,6	-14,7	700	0,8	15,9
65	Textile yarn, fabrics, made up articles, etc	48	0,7	-13,1	757	0,8	3,8
67	Iron and steel	158	2,2	-19,3	2 915	3,2	38,3
68	Non-ferrous metals	124	1,7	-1,9	2 178	2,4	51,3
69	Manufactures of metals, nes	211	2,9	-14,2	2 802	3,0	18,6
<b>7</b>	<b>Machinery, transport equipmt</b>	<b>2 233</b>	<b>30,9</b>	<b>-11,3</b>	<b>26 651</b>	<b>28,9</b>	<b>12,9</b>
71	Power generating machinery and equipment	193	2,7	23,2	2 532	2,7	33,3
72	Machinery for special industries	189	2,6	1,2	2 187	2,4	15,0
74	General industrl machy, nes	316	4,4	-3,9	3 953	4,3	15,9
75	Office machines and adp machines	127	1,8	-25,0	1 750	1,9	-2,5
76	Telecomm, sound recording equipment	194	2,7	-21,7	2 336	2,5	-0,5
77	Electric machinery, nes and parts	515	7,1	-1,2	6 251	6,8	27,5
78	Road vehicles	483	6,7	-12,1	6 565	7,1	3,4
79	Other transport equipment	190	2,6	-42,5	817	0,9	6,7
793	Ships and boats etc	166	2,3	-42,7	504	0,5	10,1
<b>8</b>	<b>Miscellaneous manufactured articles</b>	<b>548</b>	<b>7,6</b>	<b>-5,5</b>	<b>7 199</b>	<b>7,8</b>	<b>8,5</b>
82	Furniture and parts thereof	53	0,7	-31,6	881	1,0	1,3
84	Articles of apparel and clothing accessories	122	1,7	24,5	1 619	1,8	11,4
85	Footwear	26	0,4	18,6	384	0,4	28,9
87	Instruments and apparatuses, nes	132	1,8	-3,3	1 460	1,6	7,7
<b>9</b>	<b>Goods not classified elsewhere</b>	<b>388</b>	<b>5,4</b>	<b>14,2</b>	<b>4 020</b>	<b>4,4</b>	<b>16,4</b>

**Table 7. Exports and imports by Products by Activity (CPA2015)**

Products by Activity		Exports 2022				Imports 2022			
		December		January-December		December		January-December	
		value MEUR	value MEUR	share %	change %	value MEUR	value MEUR	share %	change %
<b>Total exports / imports</b>		<b>6 758</b>	<b>81 727</b>	<b>100,0</b>	<b>18,6</b>	<b>7 234</b>	<b>92 366</b>	<b>100</b>	<b>26,6</b>
<b>A</b>	<b>Products of agriculture, forestry and fishing</b>	<b>49</b>	<b>803</b>	<b>1,0</b>	<b>6,7</b>	<b>204</b>	<b>2 187</b>	<b>2,4</b>	<b>10,3</b>
<b>B</b>	<b>Products from mining and quarrying</b>	<b>91</b>	<b>1 135</b>	<b>1,4</b>	<b>8,0</b>	<b>998</b>	<b>13 156</b>	<b>14,2</b>	<b>63,7</b>
061	Crude petroleum	-	0	0,0	21,1	500	6 982	7,6	92,8
<b>C</b>	<b>Manufactured goods</b>	<b>6 225</b>	<b>76 163</b>	<b>93,2</b>	<b>18,3</b>	<b>5 225</b>	<b>68 044</b>	<b>73,7</b>	<b>21,2</b>
<b>10-12</b>	<b>Food, beverages and tobacco</b>	<b>152</b>	<b>1 779</b>	<b>2,2</b>	<b>18,7</b>	<b>398</b>	<b>4 451</b>	<b>4,8</b>	<b>17,9</b>
<b>13-15</b>	<b>Textiles, clothes, leather and leather products</b>	<b>58</b>	<b>824</b>	<b>1,0</b>	<b>13,5</b>	<b>196</b>	<b>2 748</b>	<b>3</b>	<b>18,4</b>
<b>16-18</b>	<b>Forest industry products</b>	<b>1 148</b>	<b>14 459</b>	<b>17,7</b>	<b>10,9</b>	<b>122</b>	<b>1 656</b>	<b>1,8</b>	<b>9,8</b>
16	Wood and wood products	239	3 952	4,8	5,0	43	718	0,8	-8,3
17	Paper, paper and paperboard products, pulp	909	10 505	12,9	13,3	78	934	1	29,5
<b>19-22</b>	<b>Chemical industry products</b>	<b>1 337</b>	<b>17 502</b>	<b>21,4</b>	<b>38,1</b>	<b>1 325</b>	<b>17 698</b>	<b>19,2</b>	<b>33,8</b>
19	Coke and petroleum products	602	6 699	8,2	77,3	465	5 415	5,9	87,3
20	Chemicals and chemical products	515	7 693	9,4	26,5	506	7 560	8,2	29,2
21	Pharmaceutical products and pharmaceutical preparations	114	1 291	1,6	12,8	210	2 488	2,7	7,2
22	Rubber and plastic products	106	1 819	2,2	9,1	144	2 234	2,4	3,2
<b>23</b>	<b>Other non-metallic mineral products</b>	<b>42</b>	<b>651</b>	<b>0,8</b>	<b>8,5</b>	<b>79</b>	<b>1 091</b>	<b>1,2</b>	<b>21,6</b>
<b>24-25</b>	<b>Metal and metal products</b>	<b>1 098</b>	<b>14 320</b>	<b>17,5</b>	<b>25,1</b>	<b>598</b>	<b>10 016</b>	<b>10,8</b>	<b>36,7</b>
24	Basic metals	961	12 646	15,5	27,1	379	7 084	7,7	45,9
25	Fabricated metal products (excl. machinery and equipment)	138	1 673	2,0	11,7	219	2 931	3,2	18,6
<b>26-27</b>	<b>Electric and electronics industry products</b>	<b>823</b>	<b>9 317</b>	<b>11,4</b>	<b>20,7</b>	<b>995</b>	<b>12 036</b>	<b>13</b>	<b>15,5</b>
26	Computers, electronic and optical products	398	4 253	5,2	15,1	598	6 864	7,4	9,1
263	Communication equipment	52	694	0,8	-8,8	138	1 653	1,8	1,9
27	Electrical equipment	425	5 064	6,2	25,8	397	5 172	5,6	25,4
<b>28</b>	<b>Machinery and equipment</b>	<b>945</b>	<b>9 834</b>	<b>12,0</b>	<b>9,5</b>	<b>622</b>	<b>7 772</b>	<b>8,4</b>	<b>18,5</b>
<b>29-30</b>	<b>Transport equipment</b>	<b>487</b>	<b>5 673</b>	<b>6,9</b>	<b>-8,3</b>	<b>717</b>	<b>8 243</b>	<b>8,9</b>	<b>3,6</b>
29	Motor vehicles	203	3 567	4,4	-10,0	479	6 847	7,4	0,8
30	Other transport equipment	284	2 106	2,6	-5,2	238	1 395	1,5	20,3
<b>31-33</b>	<b>Other manufactured goods</b>	<b>134</b>	<b>1 805</b>	<b>2,2</b>	<b>17,3</b>	<b>174</b>	<b>2 333</b>	<b>2,5</b>	<b>7,0</b>
<b>D</b>	<b>Electricity, gas, steam, air conditioning *</b>	<b>108</b>	<b>898</b>	<b>1,1</b>	<b>58,5</b>	<b>298</b>	<b>3 005</b>	<b>3,3</b>	<b>73,7</b>
<b>E-X</b>	<b>Other products</b>	<b>284</b>	<b>2 728</b>	<b>3,3</b>	<b>28,0</b>	<b>508</b>	<b>5 975</b>	<b>6,5</b>	<b>18,9</b>
E 381158	Metal waste	0	0	0,0	-100,0	0	2	0	-99,9

\* Natural gas B 062

Starting from the statistical year 2022, international trade in goods statistics by CPA-classification are published only according to CPA2015 classification.

**Table 8. Imports and exports by BEC goods classification (Broad Economic Categories)**

BEC Rev.4		December 2022			January-December 2022		
		value MEUR	share %	change %	value MEUR	share %	change %
<b>Total imports</b>		<b>7 234</b>	<b>100,0</b>	<b>-5,3</b>	<b>92 366</b>	<b>100,0</b>	<b>26,6</b>
1	Food and beverages	446	6,2	7,0	5 249	5,7	18,9
2	Industrial supplies not elsewhere specified	1 862	25,7	-23,0	28 990	31,4	20,5
3	Fuels and lubricants	1 559	21,6	17,7	18 075	19,6	89,7
31	Primary	750	10,4	16,1	9 601	10,4	98,2
32	Processed	809	11,2	19,3	8 475	9,2	81,0
4	Capital goods (except transport equipment), and parts and accessories thereof	1 663	23,0	14,9	18 170	19,7	22,2
5	Transport equipment and parts and accessories thereof	661	9,1	-38,1	9 666	10,5	5,1
6	Consumer goods not elsewhere specified	666	9,2	5,6	8 276	9,0	11,1
61	Durable	134	1,8	-9,3	1 732	1,9	1,8
62	Semi-durable	232	3,2	7,3	3 224	3,5	19,5
63	Non-durable	300	4,1	12,4	3 319	3,6	8,9
7	Goods not elsewhere specified	377	5,2	12,5	3 939	4,3	15,4
<b>Total exports</b>		<b>6 758</b>	<b>100,0</b>	<b>-8,8</b>	<b>81 727</b>	<b>100,0</b>	<b>18,6</b>
1	Food and beverages	153	2,3	15,6	1 949	2,4	23,8
2	Industrial supplies not elsewhere specified	3 102	45,9	-4,1	41 010	50,2	16,7
3	Fuels and lubricants	732	10,8	47,2	7 977	9,8	72,6
31	Primary	2	0,0	-4,5	128	0,2	244,4
32	Processed	730	10,8	47,4	7 850	9,6	71,2
4	Capital goods (except transport equipment), and parts and accessories thereof	1 786	26,4	16,4	19 286	23,6	16,4
5	Transport equipment and parts and accessories thereof	568	8,4	-65,3	7 004	8,6	-4,1
6	Consumer goods not elsewhere specified	235	3,5	-3,0	2 807	3,4	17,7
61	Durable	31	0,5	4,1	355	0,4	0,0
62	Semi-durable	80	1,2	9,8	1 047	1,3	21,7
63	Non-durable	125	1,8	-11,1	1 406	1,7	20,2
7	Goods not elsewhere specified	182	2,7	37,8	1 693	2,1	29,4

**Table 9. Trade by regions and countries**

Origin/ destination	Imports 2022				Exports 2022				Trade 2022	
	December	January-December			December	January-December			December	January-December
	value MEUR	value MEUR	share %	change %	value MEUR	value MEUR	share %	change %	value MEUR	value MEUR
<b>Total exports / imports</b>	<b>7 234</b>	<b>92 366</b>	<b>100,0</b>	<b>26,6</b>	<b>6 758</b>	<b>81 727</b>	<b>100</b>	<b>18,6</b>	<b>-476</b>	<b>-10 639</b>
EU	4 139	50 654	54,8	19,8	3 882	46 024	56,3	17,9	-256	-4 630
Euro zone	2 640	32 032	34,7	15,3	2 730	31 661	38,7	14,8	90	-371
External trade	3 095	41 712	45,2	36,1	2 876	35 703	43,7	19,5	-219	-6 009
Developing countries	1 349	17 612	19,1	35,2	1 149	13 090	16	23,0	-200	-4 522
<b>Europe</b>	<b>5 107</b>	<b>67 883</b>	<b>73,5</b>	<b>21,8</b>	<b>4 707</b>	<b>56 458</b>	<b>69,1</b>	<b>13,2</b>	<b>-399</b>	<b>-11 425</b>
<b>EU</b>	<b>4 139</b>	<b>50 654</b>	<b>54,8</b>	<b>19,8</b>	<b>3 882</b>	<b>46 024</b>	<b>56,3</b>	<b>17,9</b>	<b>-256</b>	<b>-4 630</b>
AT Austria	76	907	1,0	16,2	39	590	0,7	18,5	-37	-317
BE Belgium	131	1 727	1,9	9,4	255	2 907	3,6	25,9	124	1 180
BG Bulgaria	9	122	0,1	37,1	10	110	0,1	8,5	0	-12
CY Cyprus	1	14	0,0	3,4	2	29	0	45,3	1	15
CZ Czech Republic	84	1 107	1,2	8,5	41	562	0,7	28,8	-43	-545
DE Germany	899	11 900	12,9	9,6	606	9 561	11,7	4,5	-294	-2 339
DK Denmark	144	1 802	2,0	4,9	105	1 450	1,8	17,0	-40	-352
EE Estonia	313	3 445	3,7	42,5	526	3 514	4,3	46,1	213	69
ES Spain	166	1 687	1,8	5,8	94	1 267	1,6	24,7	-72	-420
FR France	172	2 021	2,2	11,4	205	2 525	3,1	21,4	33	504
GR Greece	21	177	0,2	15,4	19	206	0,3	18,0	-2	29
HU Hungary	38	516	0,6	15,0	18	263	0,3	17,2	-20	-253
HR Croatia	2	47	0,1	5,7	7	60	0,1	47,8	5	14
IE Ireland	70	690	0,7	2,2	15	229	0,3	-67,5	-55	-461
IT Italy	190	2 343	2,5	16,0	181	2 433	3	-17,3	-9	90
LT Lithuania	67	733	0,8	23,4	78	973	1,2	24,7	11	240
LU Luxembourg	6	119	0,1	27,8	6	47	0,1	26,9	0	-72
LV Latvia	38	449	0,5	34,4	64	818	1	24,4	26	369
MT Malta	1	9	0,0	-11,6	2	11	0	-61,6	1	2
NL Netherlands	400	4 724	5,1	21,4	589	5 995	7,3	38,0	189	1 272
PL Poland	247	3 049	3,3	24,5	201	2 492	3	24,0	-46	-557
PT Portugal	50	544	0,6	14,6	20	243	0,3	24,8	-30	-300
RO Romania	22	329	0,4	7,0	14	243	0,3	46,7	-9	-86
SE Sweden	951	11 649	12,6	38,3	700	8 780	10,7	23,4	-252	-2 869
SI Slovenia - Slovenien - Slovenia	12	180	0,2	17,4	9	89	0,1	13,3	-3	-91
SK Slovakia	27	365	0,4	9,1	21	224	0,3	33,9	-7	-141
<b>Rest of Europe</b>	<b>968</b>	<b>17 229</b>	<b>18,7</b>	<b>28,2</b>	<b>825</b>	<b>10 434</b>	<b>12,8</b>	<b>-3,8</b>	<b>-143</b>	<b>-6 795</b>
CH Switzerland	77	817	0,9	34,2	120	1 460	1,8	20,7	43	643
GB United Kingdom	163	2 201	2,4	60,1	166	2 927	3,6	14,3	4	725
XI Northern Ireland	1	22	0,0	-24,4	5	60	0,1	21,5	4	39
IS Iceland	1	31	0,0	57,2	5	79	0,1	59,9	3	48
NO Norway	437	6 399	6,9	277,1	198	2 286	2,8	30,9	-239	-4 113
RU Russia	184	6 248	6,8	-27,5	177	2 090	2,6	-44,1	-7	-4 158
TR Türkiye	73	990	1,1	36,0	111	1 129	1,4	18,8	38	138
UA Ukraine	5	88	0,1	-17,8	21	147	0,2	-38,4	15	59
<b>North Africa</b>	<b>44</b>	<b>180</b>	<b>0,2</b>	<b>78,9</b>	<b>91</b>	<b>807</b>	<b>1</b>	<b>15,6</b>	<b>47</b>	<b>626</b>
EG Egypt	40	104	0,1	139,8	55	475	0,6	18,0	16	372
MA Morocco	3	59	0,1	52,4	11	141	0,2	20,6	8	82
<b>Rest of Africa</b>	<b>78</b>	<b>1 155</b>	<b>1,2</b>	<b>73,1</b>	<b>70</b>	<b>1 012</b>	<b>1,2</b>	<b>36,8</b>	<b>-8</b>	<b>-143</b>
ZA South Africa	44	299	0,3	52,1	33	464	0,6	27,3	-11	165
<b>Middle East</b>	<b>24</b>	<b>478</b>	<b>0,5</b>	<b>222,5</b>	<b>74</b>	<b>1 080</b>	<b>1,3</b>	<b>30,8</b>	<b>50</b>	<b>602</b>
AE Arab Emirates	1	24	0,0	59,3	15	308	0,4	79,7	14	284
IL Israel	7	100	0,1	52,9	16	225	0,3	16,8	9	125
SA Saudi Arabia	1	31	0,0	3,7	24	297	0,4	-0,4	23	265
<b>Rest of Asia</b>	<b>1 156</b>	<b>14 863</b>	<b>16,1</b>	<b>30,8</b>	<b>908</b>	<b>9 974</b>	<b>12,2</b>	<b>15,7</b>	<b>-248</b>	<b>-4 888</b>
CN China	617	8 468	9,2	28,3	425	4 035	4,9	11,3	-192	-4 432
HK Hong Kong	3	101	0,1	63,0	6	95	0,1	-29,7	3	-6
ID Indonesia	18	242	0,3	27,2	38	283	0,3	22,2	20	40
IN India	36	637	0,7	53,3	76	765	0,9	41,1	40	128
JP Japan	81	957	1,0	22,2	121	1 786	2,2	11,7	40	829
KR South Korea	59	763	0,8	10,2	66	980	1,2	28,4	7	217
KZ Kazakhstan	24	179	0,2	>999	37	249	0,3	142,8	14	69
MY Malaysia	30	495	0,5	2,0	13	181	0,2	29,5	-17	-314
PH Philippines	11	198	0,2	23,8	10	145	0,2	-19,1	-2	-53
SG Singapore	42	284	0,3	14,1	17	197	0,2	8,5	-24	-86
TH Thailand	32	495	0,5	56,4	18	247	0,3	5,1	-14	-248
TW Taiwan	118	897	1,0	81,9	22	258	0,3	-15,1	-96	-639
<b>North America</b>	<b>580</b>	<b>4 947</b>	<b>5,4</b>	<b>73,7</b>	<b>665</b>	<b>8 781</b>	<b>10,7</b>	<b>60,3</b>	<b>85</b>	<b>3 835</b>
CA Canada	36	832	0,9	64,8	92	1 027	1,3	26,0	56	196
US USA	544	4 114	4,5	75,6	573	7 750	9,5	66,4	29	3 636
<b>Middle America</b>	<b>31</b>	<b>496</b>	<b>0,5</b>	<b>-11,7</b>	<b>43</b>	<b>767</b>	<b>0,9</b>	<b>42,0</b>	<b>11</b>	<b>270</b>
MX Mexico	24	285	0,3	-18,5	34	622	0,8	90,5	11	337
<b>South America</b>	<b>137</b>	<b>1 692</b>	<b>1,8</b>	<b>40,3</b>	<b>134</b>	<b>1 917</b>	<b>2,3</b>	<b>40,7</b>	<b>-3</b>	<b>225</b>
AR Argentina	2	18	0,0	23,8	4	390	0,5	316,8	2	372
BR Brazil	71	854	0,9	89,3	81	839	1	64,5	10	-15
CL Chile	3	86	0,1	-71,8	24	279	0,3	28,7	22	193
CO Colombia	14	296	0,3	294,8	5	131	0,2	9,9	-8	-165
<b>Oceania</b>	<b>77</b>	<b>672</b>	<b>0,7</b>	<b>112,2</b>	<b>66</b>	<b>931</b>	<b>1,1</b>	<b>21,2</b>	<b>-10</b>	<b>259</b>
AU Australia	63	544	0,6	109,4	58	831	1	21,4	-6	287

**Table 10. Volume index, exports 2020=100**

Products by Activity (CPA2015)	December 2022:12	Change 2022:12/ 2022:11	Change 2022:12/ 2021:12	Effect* 2022:12/ 2021:12	Mean** 2022:01- 2022:12	Change 2022:01-2022:12/ 2021:01-2021:12	Weights 2021
Total exports	99,8	-14,7	-17,7	-17,70	99,6	-4,9	1000,0
01 Products of agriculture and hunting	35,6	-52,0	-42,4	-0,15	89,8	-24,6	7,5
10 Food products	93,9	-1,9	6,2	0,10	93,6	-5,0	19,0
11 Beverages	123,6	-19,8	3,8	0,01	130,2	10,8	2,7
13 Textiles	81,3	-10,1	-15,2	-0,07	95,7	-8,7	5,0
14 Wearing apparel	83,2	-34,1	-5,5	-0,02	95,6	2,4	3,5
15 Leather and related products	95,9	-19,5	-9,0	-0,02	113,4	3,0	2,3
16 Wood and wood products	94,9	-13,1	-9,7	-0,40	103,7	-6,1	54,6
171 Pulp, paper and paperboard	85,2	-3,8	-18,7	-2,31	88,9	-15,9	130,8
172 Articles of paper and paperboard	92,3	-15,5	-9,4	-0,04	106,8	5,9	3,9
19 Coke and refined petroleum products	91,0	9,7	17,2	0,70	77,1	0,0	54,7
20 Chemicals and chemical products	90,7	-12,8	-23,1	-2,02	105,7	-2,6	88,8
21 Basic pharmaceutical products and preparations	107,1	15,3	-10,2	-0,18	93,3	-18,1	16,3
22 Rubber and plastic products	66,8	-25,6	-32,4	-0,69	101,9	-7,3	24,2
23 Other non-metallic mineral products	85,1	-26,3	-9,0	-0,07	114,0	-1,7	8,3
241 Basic iron and steel and ferro-alloys	84,3	-11,2	-22,9	-1,29	98,4	-12,2	67,9
244 Basic precious and other non-ferrous metals	107,2	-7,0	19,2	1,02	94,1	1,5	66,4
25 Fabricated metal products	103,0	-12,8	10,4	0,18	106,1	-1,6	20,0
26 Computer, electronic and optical products	135,5	-4,3	7,8	0,47	123,3	10,6	53,5
27 Electrical equipment	128,7	-11,7	12,2	0,76	134,1	24,7	59,2
28 Machinery and equipment	116,8	0,1	5,7	0,78	104,2	-0,1	129,3
29 Motor vehicles and trailers	65,3	-40,5	-50,2	-3,49	99,4	-12,5	57,5
38 Waste collection, treatment and disposal services	143,3	25,6	30,8	0,21	111,6	11,8	0,3
58 Publishing services	116,2	13,5	21,6	0,00	111,6	7,9	0,5

\*Effect of change

\*\* Moving 12-month averages

**Table 11. Volume index, imports 2020=100**

Products by Activity (CPA2015)	December 2022:12	Change 2022:12/ 2022:11	Change 2022:12/ 2021:12	Effect* 2022:12/ 2021:12	Mean** 2022:01- 2022:12	Change 2022:01-2022:12/ 2021:01-2021:12	Weights 2021
Total imports	99,3	-5,5	-14,7	-14,70	103,9	0,8	1000,0
01 Products of agriculture and hunting	111,0	31,9	-16,9	-0,58	96,0	-6,2	19,2
061 Crude petroleum	89,7	34,1	10,1	0,56	85,6	17,5	49,2
07 Metal ores	94,4	2,3	-25,1	-1,27	117,5	-0,9	39,7
10 Food products	89,5	0,3	-6,6	-0,43	90,0	-3,5	44,0
13 Textiles	59,5	-14,7	-19,5	-0,24	75,1	-12,1	9,4
14 Wearing apparel	93,2	-0,9	26,7	0,49	99,9	12,3	15,8
15 Leather and related products	90,6	-17,1	13,1	0,08	112,4	15,0	5,7
16 Wood and wood products	50,1	-25,5	-44,8	-0,57	74,1	-24,8	10,7
19 Coke and refined petroleum products	122,6	1,5	30,7	1,19	115,0	19,7	39,7
20 Chemicals and chemical products	98,9	-13,8	-11,0	-1,18	112,6	6,6	80,6
21 Basic pharmaceutical products and preparations	99,1	4,6	0,1	0,00	95,6	-5,0	31,3
22 Rubber and plastic products	73,9	-20,0	-20,0	-0,69	100,3	-9,7	29,7
23 Other non-metallic mineral products	87,9	-24,2	-12,5	-0,22	107,0	2,3	12,2
241 Basic iron and steel and ferro-alloys	66,9	0,4	-28,6	-0,68	105,4	-0,6	21,0
244 Basic precious and other non-ferrous metals	84,7	-29,8	-29,4	-1,64	117,3	25,4	37,5
25 Fabricated metal products	107,8	-7,8	-24,5	-1,36	122,9	-1,6	33,1
26 Computer, electronic and optical products	114,4	-3,8	-19,9	-3,19	110,5	-5,3	86,2
27 Electrical equipment	116,4	-17,2	-9,3	-0,87	128,3	10,8	57,0
28 Machinery and equipment	115,6	-12,8	-3,7	-0,52	124,4	9,1	88,9
29 Motor vehicles and trailers	84,0	-21,1	-26,1	-3,55	104,6	-7,1	93,3
35 Electricity, gas, steam and air conditioning Waste collection, treatment	70,9	-34,5	-47,7	-1,01	94,8	-18,1	23,8
38 and disposal services	216,6	167,9	99,3	1,86	131,5	24,9	0,4

\*Effect of change

\*\* Moving 12-month averages

**Table 12. Unit value index, exports 2020=100**

Products by Activity (CPA2015)	December 2022:12	Change 2022:12/ 2022:11	Change 2022:12/ 2021:12	Effect* 2022:12/ 2021:12	Mean** 2022:01- 2022:12	Change 2022:01-2022:12/ 2021:01-2021:12	Weights 2021
Total exports	141,4	-1,2	11,8	11,80	141,5	24,2	1000,0
01 Products of agriculture and hunting	140,6	-10,7	15,6	0,09	127,0	6,9	7,5
10 Food products	134,8	-1,9	24,2	0,42	127,8	22,7	19,0
11 Beverages	107,3	-4,4	5,9	0,01	109,4	8,9	2,7
13 Textiles	117,8	1,2	11,9	0,04	112,8	9,4	5,0
14 Wearing apparel	115,0	-6,5	9,7	0,03	114,2	11,2	3,5
15 Leather and related products	123,4	-1,3	11,0	0,02	116,1	8,5	2,3
16 Wood and wood products	124,6	-4,6	-19,5	-0,99	156,4	10,4	54,6
171 Pulp, paper and paperboard	163,2	-4,2	34,3	4,09	148,4	32,7	130,8
172 Articles of paper and paperboard	144,1	1,6	28,4	0,10	129,5	22,6	3,9
19 Coke and refined petroleum products	226,6	-6,9	37,2	2,74	247,3	78,8	54,7
20 Chemicals and chemical products	142,0	-1,8	10,6	0,85	151,0	29,3	88,8
21 Basic pharmaceutical products and preparations	137,5	-8,8	-9,7	-0,18	148,7	37,3	16,3
22 Rubber and plastic products	135,9	-2,8	21,6	0,43	127,0	17,5	24,2
23 Other non-metallic mineral products	122,8	-1,0	17,0	0,11	116,5	14,0	8,3
241 Basic iron and steel and ferro-alloys	165,8	0,1	7,1	0,47	180,3	39,2	67,9
244 Basic precious and other non-ferrous metals	156,5	-1,9	4,3	0,32	167,3	30,8	66,4
25 Fabricated metal products	121,4	5,0	13,5	0,22	114,6	11,4	20,0
26 Computer, electronic and optical products	110,4	3,5	-3,0	-0,14	107,3	4,3	53,5
27 Electrical equipment	108,6	1,5	7,2	0,33	101,0	-2,3	59,2
28 Machinery and equipment	117,6	-0,5	12,1	1,34	113,1	9,3	129,3
29 Motor vehicles and trailers	106,1	4,8	1,7	0,07	102,0	2,7	57,5
38 Waste collection, treatment and disposal services	177,3	4,2	11,6	0,09	177,5	27,6	0,3
58 Publishing services	131,3	5,6	18,7	0,00	117,4	14,2	0,5

\*Effect of change

\*\* Moving 12-month averages

**Table 13. Unit value index, imports 2020=100**

Products by Activity (CPA2015)	December 2022:12	Change	Change	Effect*	Mean** 2022:01- 2022:12	Change	Weights 2021
		% 2022:12/ 2022:11	% 2022:12/ 2021:12	pp 2022:12/ 2021:12		% 2022:01-2022:12/ 2021:01-2021:12	
Total imports	146,2	-0,6	12	12	146,8	24,9	1000
01 Products of agriculture and hunting	125,3	-7,3	3,4	0,05	128,2	15,6	19,2
061 Crude petroleum	224,5	-17	23,6	1,5	269,6	65,1	49,2
062 Natural gas	790,8	-14,1	59,4	1,61	849,1	229,2	14
07 Metal ores	124,7	-2,8	-6,2	-0,19	145,9	9,2	39,7
10 Food products	134,6	-0,2	22,5	0,92	125,9	20,6	44
13 Textiles	122,5	-2,7	10,5	0,1	120,2	16	9,4
14 Wearing apparel	115,2	-3,9	5,3	0,08	111	9	15,8
15 Leather and related products	112,7	-5,5	3,1	0,01	111,7	6,9	5,7
16 Wood and wood products	154,2	-2,8	22,8	0,22	146	23,8	10,7
19 Coke and refined petroleum products	235,5	-0,6	37,7	1,52	244,3	56,2	39,7
20 Chemicals and chemical products	133,2	-3,6	-0,3	-0,03	144,2	19,8	80,6
21 Basic pharmaceutical products and preparations	122,1	-9,5	2,3	0,06	126,2	17,5	31,3
22 Rubber and plastic products	130	0,3	14,3	0,34	123,1	13,4	29,7
23 Other non-metallic mineral products	130,7	4,2	19,9	0,2	122	19	12,2
241 Basic iron and steel and ferro-alloys	179,8	-1,4	4,7	0,1	191,4	40,7	21
244 Basic precious and other non-ferrous metals	155,9	-3,9	-2,3	-0,09	171,5	16,5	37,5
25 Fabricated metal products	128,5	-0,4	17,7	0,42	125,7	20,3	33,1
26 Computer, electronic and optical products	115,8	-1	9,5	0,64	112,9	14,2	86,2
27 Electrical equipment	116,5	0,2	10,7	0,46	112,9	11,5	57
28 Machinery and equipment	116,8	3,1	9,8	0,67	111,1	8,3	88,9
29 Motor vehicles and trailers	118,3	3,5	10,9	0,78	112,4	7,8	93,3
35 Electricity, gas, steam and air conditioning	806,5	28	40,1	2,04	518,2	123,8	23,8
38 Waste collection, treatment and disposal services	170,2	-20,4	1,3	0,02	168	17,5	0,4

\*Effect of change

\*\* Moving 12-month averages



Monthly statistics on the international trade in goods, December 2022  
2022:K12EN, 28.2.2023

Inquiries:

Kaarna, Anssi tel. +358 40 332 8153  
Telasuo, Christina tel. +358 40 332 1828  
E-mail: forename.surname@tulli.fi

The preliminary statistics and monthly statistics on the international trade for January 2023 will be published on the following dates:

Preliminary statistics 2023:E01 8.3.2023  
Monthly statistics 2023:K01 29.3.2023

More specific data on countries and goods, as well as statistics on logistics, are available free of charge via the the Uljas statistical database (ULJAS) [uljas.tulli.fi](http://uljas.tulli.fi)

ISSN 1796-0479 = Official Statistics of Finland (pdf)

ISSN 2342-2335 = Monthly statistics on the international trade in goods (online)

Contact information:

Finnish Customs  
Statistics

Opastinsilta 12  
PO Box 512  
FI-00101 Helsinki

Exchange + 358 295 5200  
Statistics service + 358 295 52335  
[statistics@tulli.fi](mailto:statistics@tulli.fi)