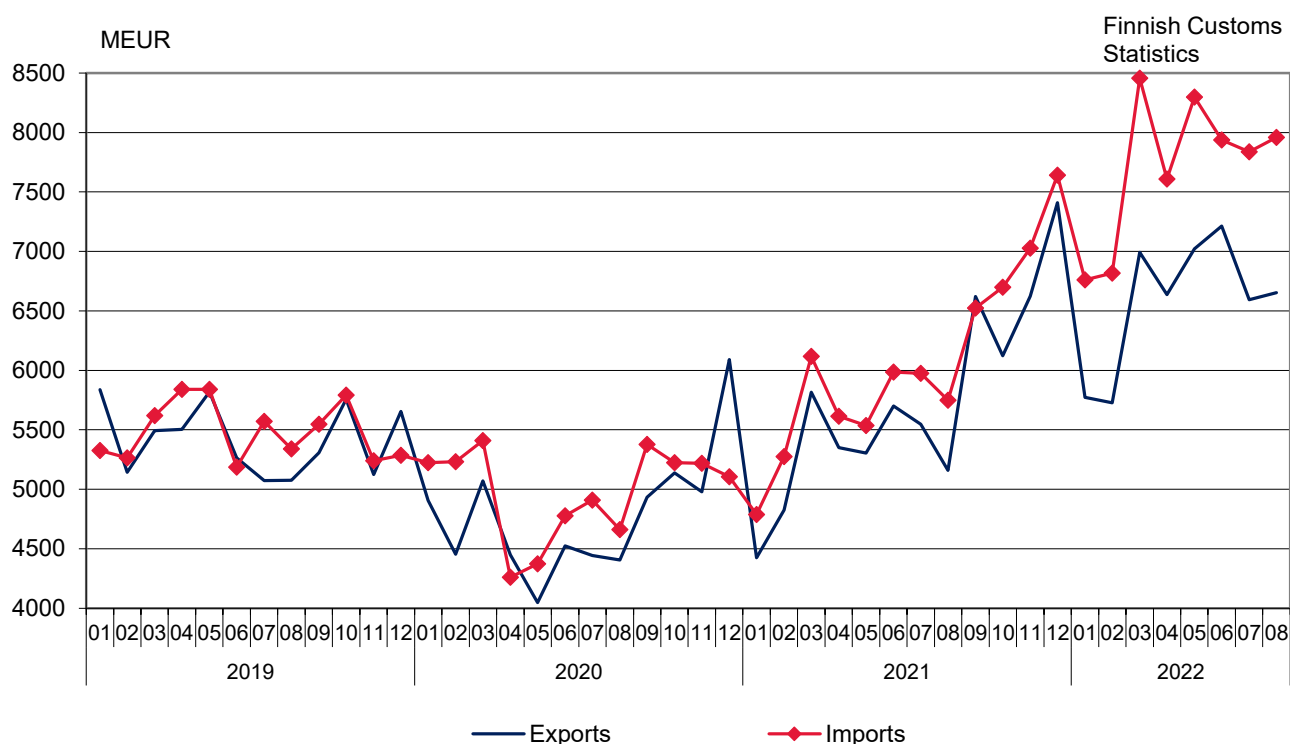


# Monthly statistics on the international trade in goods

## August 2022

Figure 1. Exports and imports of Finland 2019 – 2022



Helsinki 31.10.2022. Free for publication at 9.00 a.m.

Quoting is encouraged provided Finnish Customs is acknowledged as the source.

## Both export and import prices increased in August

The value of Finnish exports of goods increased by 28.9 per cent year-on-year in August, according to the international trade in goods statistics provided by Finnish Customs. The value of Finnish exports was EUR 6.7 billion. Export volume increased by 4.4 per cent and export prices increased by 23.6 per cent year-on-year. The value of imports increased by 38.4 per cent in August to EUR 8.0 billion. Import prices increased by 26.2 per cent and import volume by 9.7 per cent compared to August 2021. In January-August, the aggregated value of exports increased by 24.9 per cent and the value of imports by 36.9 per cent compared with the corresponding period last year.

In August 2022, the trade balance showed a deficit of EUR 1.3 billion. In January-August 2022, the trade balance had an aggregated deficit of EUR 9.1 billion. The deficit was EUR 6.2 billion higher than in the corresponding period last year. The aggregate trade surplus by commodity group for forest industry products increased in January-August compared with the corresponding period in 2021. The trade balance surplus in industrial machinery and equipment decreased from a year ago, but the trade balance surplus in metals increased. Trade balance deficit increased in the trade of energy products, ores and scrap metal and electrical machinery and equipment.

The terms of trade worsened in August compared to the corresponding month of 2021 as import prices increased more than export prices. The point figure in August was 95.7, while it was 97.7 in August 2021. The terms of trade deteriorated also from July 2022.

The value of exports of capital goods increased by 27.2 per cent in August and the value of exports of industrial supplies by 24.5 per cent year-on-year. The value of exports of fuels and lubricants increased by 59.6 per cent. The value of exports of consumer goods rose by 24.3 per cent and the value of exports of food and beverages by 23.0 per cent. The value of exports of transport equipment and parts increased by 34.7 per cent.

The value of imports of industrial supplies increased by 25.9 per cent in August, and the value of imports of capital goods rose by 29.2 per cent year-on-year. The value of imports of transport equipment and parts increased by 22.5 per cent. The value of imports of fuels and lubricants rose by 119.6 per cent. The value of imports of food and beverages increased by 23.9 per cent and the value of imports of consumer goods by 21.4 per cent.

Exports to EU countries rose by 31.3 per cent and exports to non-EU countries by 25.8 per cent in August. Imports from EU countries rose by 30.8 per cent and imports from outside the EU by 48.4 per cent in August. In January-August, total exports to EU countries increased by 30.8 per cent and exports to non-EU countries by 17.6 per cent. During the same period, imports from EU countries rose by 24.8 per cent and from outside the EU by 54.6 per cent.

**Table 1. Total development (e million)**

	August		Change %	January-August		Change %
	2021	2022		2021	2022	
Exports (fob)	5 160	6 652	28,9	42 130	52 613	24,9
Imports (cif)	5 750	7 960	38,4	45 043	61 677	36,9
Trade balance	-590	-1 308		-2 914	-9 064	

**Table 2. International trade indexes  
2020=100**

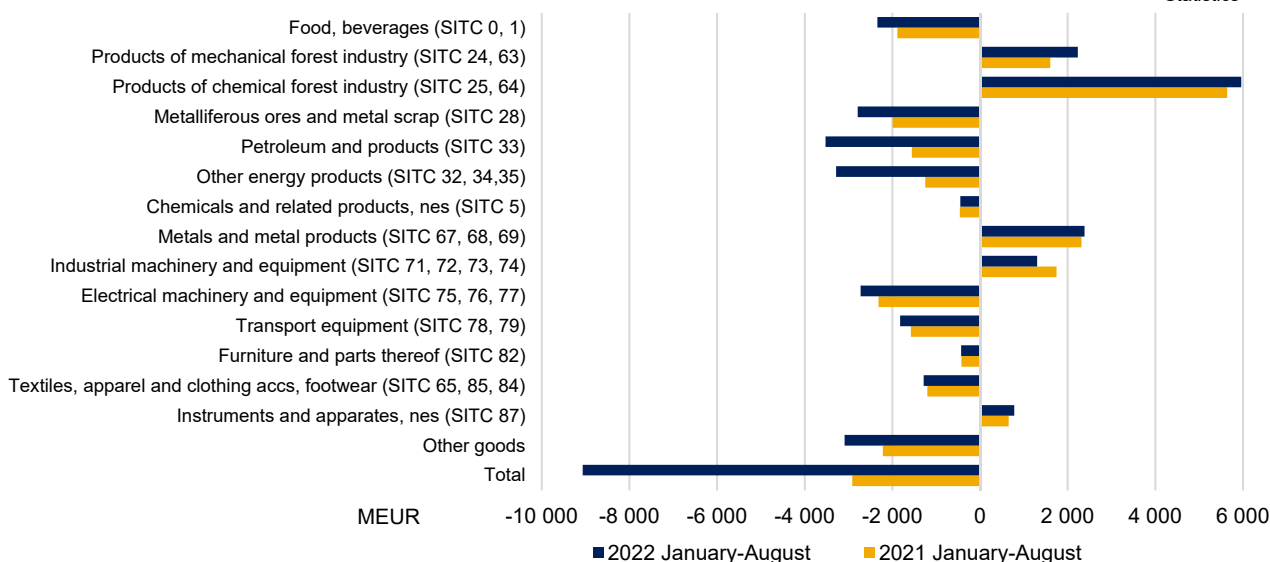
	August		Change %		Average *	Change %
	2021:08	2022:08	2022:08/ 2022:07	2022:08/ 2021:08		
<b>Volume index</b>						
Exports	91,1	95,1	2,6	4,4	102,7	-0,5
Imports	95,4	104,7	0,3	9,7	106,5	5,6
<b>Unit value index</b>						
Exports	118,1	146,0	-0,8	23,6	134,2	26,6
Imports	120,9	152,6	1,9	26,2	139,5	28,6

\* Moving 12-month averages

Note. Base year is now 2020=100

**Figure 2. Trade balance (EUR million) in combined SITC commodity groups in January-August 2021 and 2022**

Finnish  
Customs  
Statistics



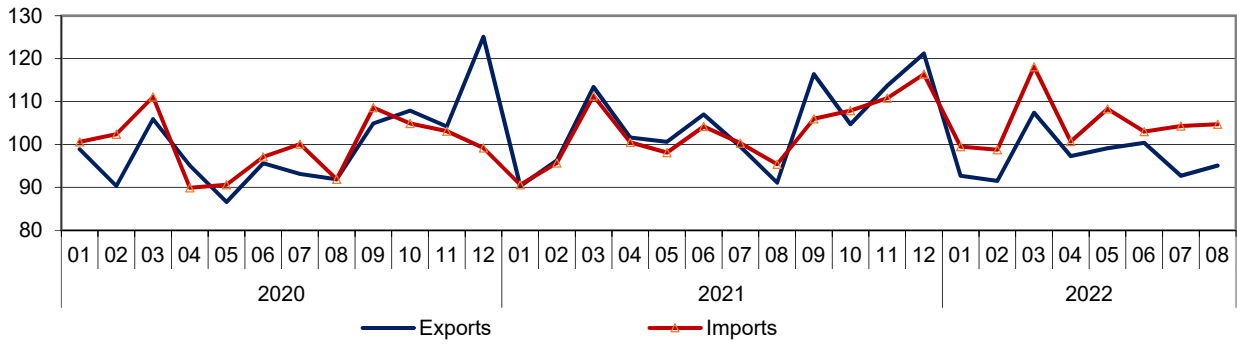
**Table 3. Trade balance (EUR million) in combined SITC commodity groups in January-August 2021 and 2022**

	Trade balance 2021 (01-08)	Trade balance 2022 (01-08)	Share of exports % 2022 (01-08)*	Share of imports % 2022 (01-08)*
Food, beverages (SITC 0, 1)	-1 883	-2 339	2,5	5,9
Products of mechanical forest industry (SITC 24, 63)	1 603	2 234	5,4	1,0
Products of chemical forest industry (SITC 25, 64)	5 639	5 963	12,5	1,0
Metalliferous ores and metal scrap (SITC 28)	-1 993	-2 788	3,5	7,5
Petroleum and products (SITC 33)	-1 555	-3 525	9,3	13,6
Other energy products (SITC 32, 34,35)	-1 248	-3 283	1,3	6,5
Chemicals and related products, nes (SITC 5)	-459	-447	11,7	10,7
Metals and metal products (SITC 67, 68, 69)	2 316	2 384	15,3	9,2
Industrial machinery and equipment (SITC 71, 72, 73, 74)	1 745	1 305	13,5	9,4
Electrical machinery and equipment (SITC 75, 76, 77)	-2 316	-2 725	7,2	10,6
Transport equipment (SITC 78, 79)	-1 576	-1 822	5,9	8,0
Furniture and parts thereof (SITC 82)	-423	-430	0,4	1,0
Textiles, apparel and clothing accs, footwear (SITC 65, 85, 84)	-1 201	-1 285	0,9	2,9
Instruments and apparatuses, nes (SITC 87)	655	784	3,3	1,5
Other goods	-2 217	-3 090	7,2	11,1
<b>Total</b>	<b>-2 914</b>	<b>-9 064</b>	<b>100,0</b>	<b>100,0</b>

\* Share of total imports / exports

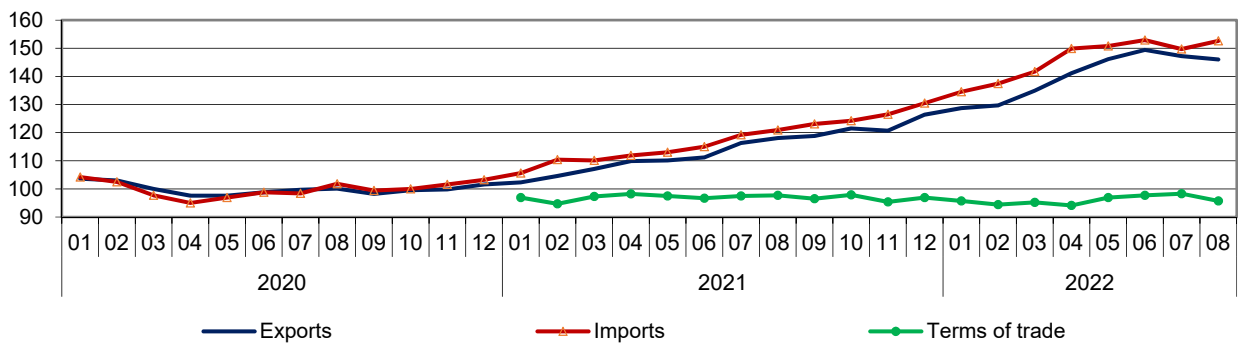
**Figure 3. Volume index 2020–2022**  
2020 = 100

Finnish Customs  
Statistics

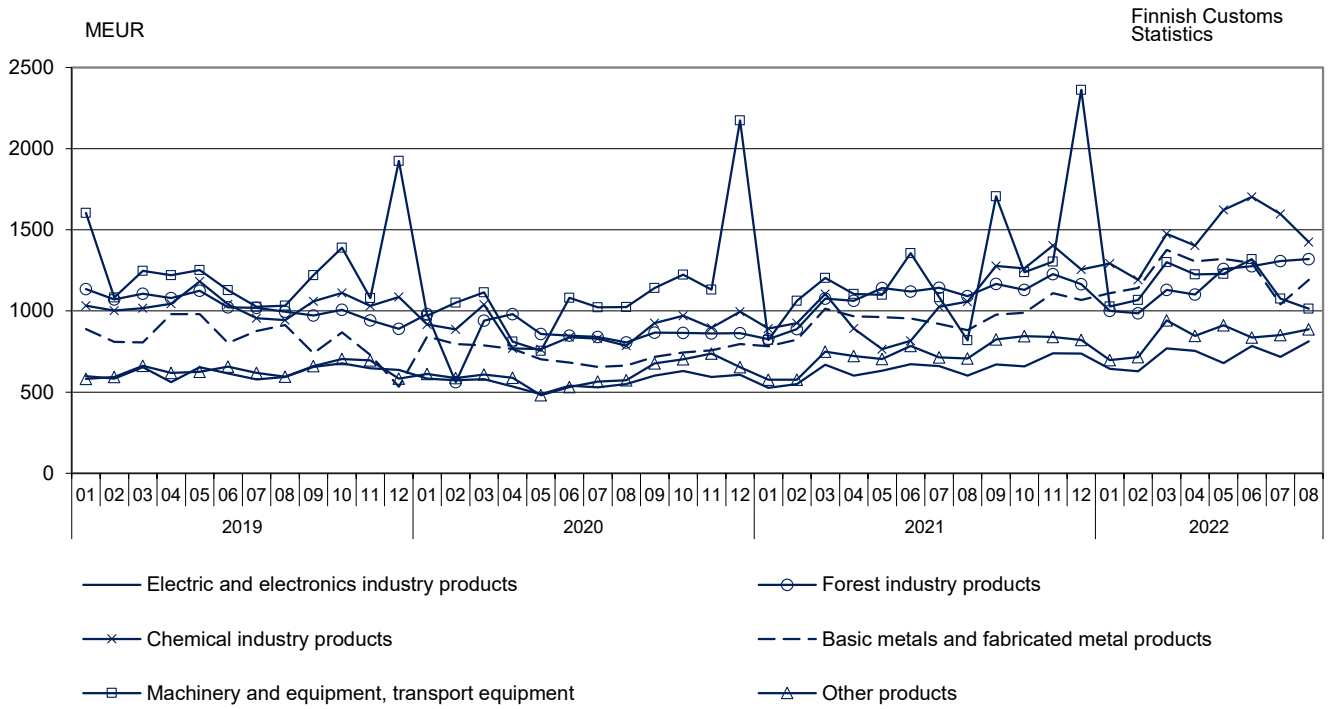


**Figure 4. Unit value index and Terms of trade 2020–2022**  
2020 = 100

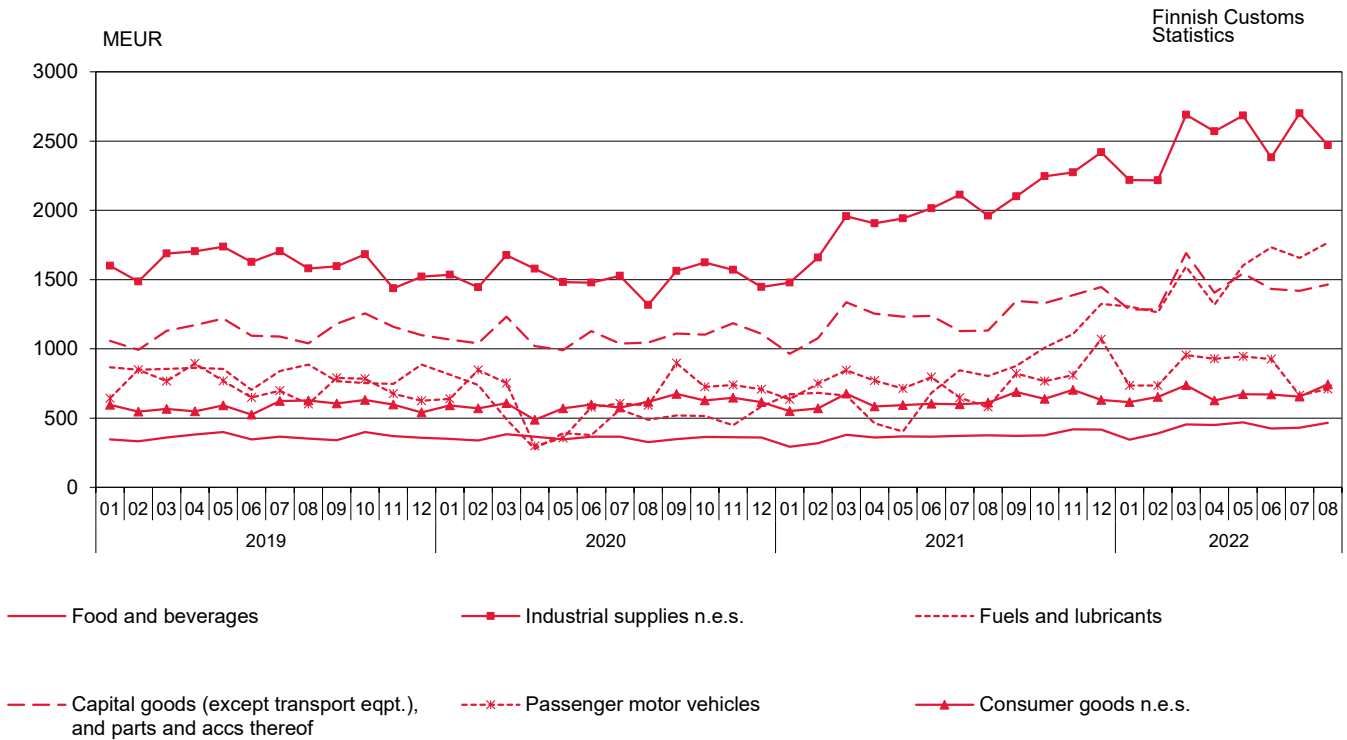
Finnish Customs  
Statistics



**Figure 5. Exports by Products by Activity (CPA) 2019 – 2022**

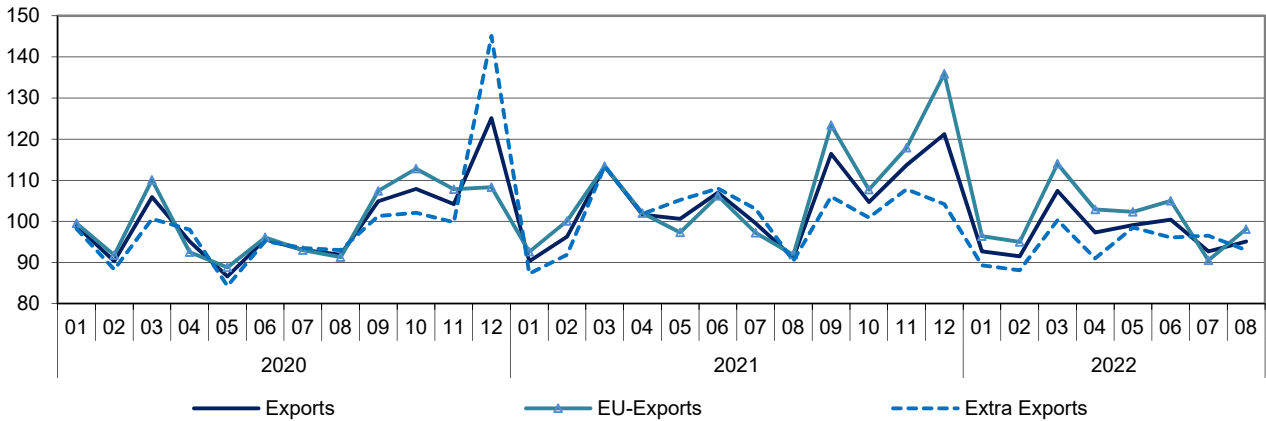


**Figure 6. Imports by broad economic categories (BEC) 2019 – 2022**



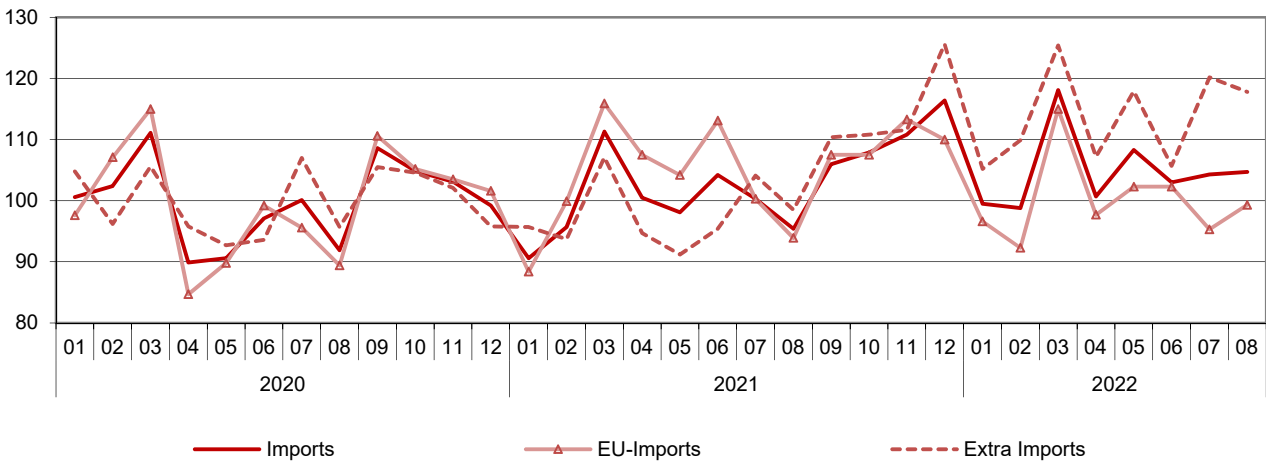
**Figure 7. Volume index of Exports by months 2020–2022**  
2020 = 100

Finnish Customs  
Statistics



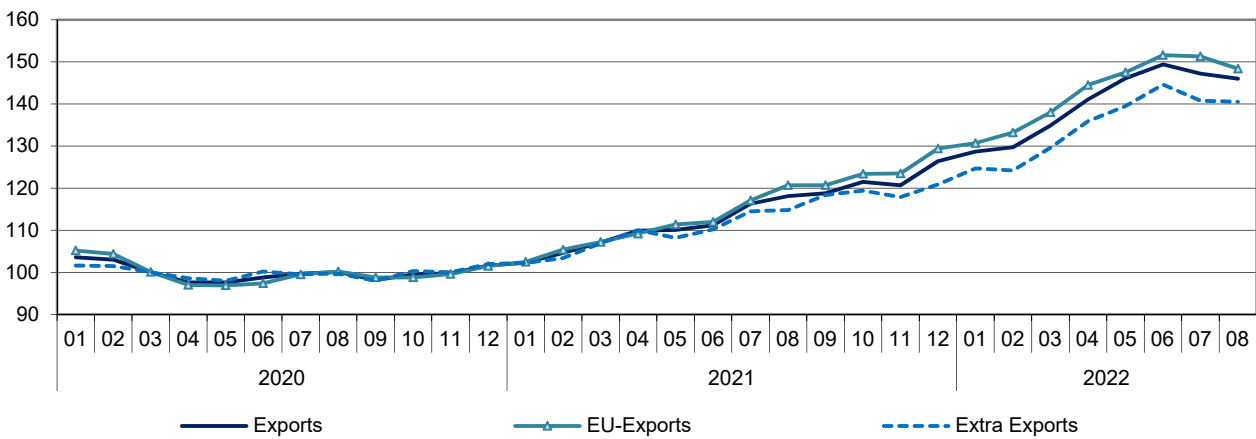
**Figure 8. Volume index of Imports by months 2020–2022**  
2020 = 100

Finnish Customs  
Statistics

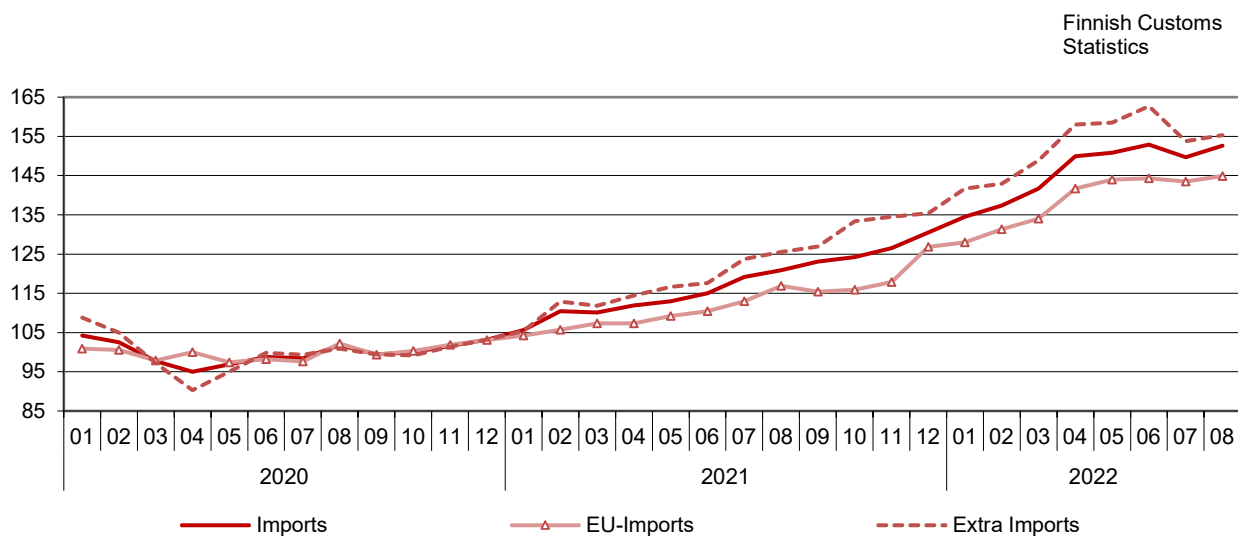


**Figure 9. Unit value index of Exports by months 2020–2022**  
2020 = 100

Finnish Customs  
Statistics



**Figure 10. Unit value index of Imports by months 2020–2022**  
2020 = 100



**Table 4. International trade indexes**  
2020=100

	August		Change %		Average *	Change %
	2021:08	2022:08	2022:08/ 2022:07	2022:08/ 2021:08	2021:09–2022:08	2021:09–2022:08/ 2020:09–2021:08
<b>Volume index</b>						
Exports	91,1	95,1	2,6	4,4	102,7	-0,5
EU-Exports	91,9	98,1	8,4	6,8	107,4	4,5
Extra Exports	90,4	93,0	-3,6	3,0	97,7	-5,9
Imports	95,4	104,7	0,3	9,7	106,5	5,6
EU-Imports	93,9	99,3	4,3	5,8	103,3	-0,1
Extra Imports	98,5	117,8	-2,0	19,6	114,0	15,0
<b>Unit value index</b>						
Exports	118,1	146,0	-0,8	23,6	134,2	26,6
EU-Exports	120,7	148,4	-2,0	23,0	136,9	28,5
Extra Exports	114,8	140,5	-0,2	22,3	129,7	23,0
Imports	120,9	152,6	1,9	26,2	139,5	28,6
EU-Imports	116,9	144,9	1,0	23,9	132,3	24,7
Extra Imports	125,5	155,3	1,0	23,8	146,0	32,6
<b>Terms of Trade</b>	97,7	95,7	-2,7	-2,1	96,2	

\* Moving 12-month averages

**Table 5. Exports by SITC**

SITC Rev.4		August 2022			January-August 2022		
		value MEUR	share %	change %	value MEUR	share %	change %
	<b>Total exports</b>	<b>6 652</b>	<b>100,0</b>	<b>28,9</b>	<b>52 613</b>	<b>100,0</b>	<b>24,9</b>
<b>0</b>	<b>Food and live animals</b>	<b>159</b>	<b>2,4</b>	<b>14,7</b>	<b>1 197</b>	<b>2,3</b>	<b>18,3</b>
02	Dairy products and birds' eggs	49	0,7	19,9	367	0,7	21,2
05	Vegetables and fruit	7	0,1	9,2	50	0,1	29,5
<b>1</b>	<b>Beverages and tobacco</b>	<b>20</b>	<b>0,3</b>	<b>20,8</b>	<b>134</b>	<b>0,3</b>	<b>22,5</b>
<b>2</b>	<b>Crude materials, inedible, except fuels</b>	<b>713</b>	<b>10,7</b>	<b>17,9</b>	<b>5 922</b>	<b>11,3</b>	<b>11,7</b>
212	Furskins, raw	5	0,1	175,2	127	0,2	-56,0
24	Cork and wood	179	2,7	-23,6	2 019	3,8	19,4
248	Wood, simply worked	170	2,6	-25,4	1 928	3,7	18,2
25	Pulp and waste paper	297	4,5	41,3	1 734	3,3	1,4
28	Metalliferous ores and metal scrap	208	3,1	50,3	1 864	3,5	26,9
<b>3</b>	<b>Mineral fuels etc</b>	<b>749</b>	<b>11,3</b>	<b>62,5</b>	<b>5 588</b>	<b>10,6</b>	<b>125,1</b>
33	Petroleum and products	615	9,2	58,6	4 889	9,3	126,5
<b>4</b>	<b>Animal, vegetable oil, fat</b>	<b>3</b>	<b>0,0</b>	<b>80,7</b>	<b>20</b>	<b>0,0</b>	<b>16,6</b>
<b>5</b>	<b>Chemicals and related products, nes</b>	<b>728</b>	<b>10,9</b>	<b>25,1</b>	<b>6 137</b>	<b>11,7</b>	<b>29,8</b>
51+52	Organic and inorganic chemicals	249	3,7	47,3	1 911	3,6	56,6
54	Medicinal, pharm. products	70	1,0	19,6	738	1,4	11,6
57+58	Plastics in primary and non-primary forms	206	3,1	9,9	1 730	3,3	16,1
<b>6</b>	<b>Basic manufactures</b>	<b>1 961</b>	<b>29,5</b>	<b>27,6</b>	<b>14 750</b>	<b>28,0</b>	<b>24,5</b>
63	Wood and cork manufactures	89	1,3	21,1	820	1,6	37,3
634	Plywood, particle board etc	61	0,9	38,5	505	1,0	24,7
64	Paper, paperboard and articles thereof	758	11,4	32,2	4 845	9,2	10,9
65	Textile yarn, fabrics, made up articles, etc	25	0,4	11,7	232	0,4	8,6
67	Iron and steel	554	8,3	25,4	4 636	8,8	42,6
68	Non-ferrous metals	318	4,8	38,4	2 506	4,8	28,4
69	Manufactures of metals, nes	116	1,7	22,2	931	1,8	16,1
<b>7</b>	<b>Machinery, transport equipmt</b>	<b>1 686</b>	<b>25,3</b>	<b>29,1</b>	<b>14 036</b>	<b>26,7</b>	<b>11,5</b>
71	Power generating machinery and equipment	210	3,2	48,5	1 426	2,7	18,0
72	Machinery for special industries	420	6,3	22,6	3 454	6,6	6,4
74	General industrial machinery, nes	232	3,5	10,9	2 041	3,9	8,1
75	Office machines and adp machines	31	0,5	-3,0	243	0,5	-7,2
76	Telecomm, sound recording equipment	83	1,2	19,4	568	1,1	-1,9
77	Electric machinery, nes and parts	402	6,0	41,9	3 003	5,7	27,2
78	Road vehicles	244	3,7	41,8	2 673	5,1	8,8
79	Other transport equipment	47	0,7	23,8	453	0,9	7,2
793	Ships and boats etc	32	0,5	3,8	351	0,7	-1,2
<b>8</b>	<b>Miscellaneous manufactured articles</b>	<b>390</b>	<b>5,9</b>	<b>13,6</b>	<b>3 047</b>	<b>5,8</b>	<b>13,7</b>
82	Furniture and parts thereof	22	0,3	18,8	186	0,4	41,2
84	Articles of apparel and clothing accessories	24	0,4	4,6	166	0,3	13,8
85	Footwear	11	0,2	9,7	82	0,2	23,2
87	Instruments and apparatus, nes	220	3,3	14,7	1 734	3,3	14,3
<b>9</b>	<b>Goods not classified elsewhere</b>	<b>243</b>	<b>3,6</b>	<b>44,0</b>	<b>1 782</b>	<b>3,4</b>	<b>30,1</b>



**Table 6. Imports by SITC**

SITC Rev.4		August 2022			January-August 2022		
		value MEUR	share %	change %	value MEUR	share %	change %
	<b>Total imports</b>	<b>7 960</b>	<b>100,0</b>	<b>38,4</b>	<b>61 677</b>	<b>100,0</b>	<b>36,9</b>
<b>0</b>	<b>Food and live animals</b>	<b>435</b>	<b>5,5</b>	<b>26,1</b>	<b>3 238</b>	<b>5,3</b>	<b>22,2</b>
02	Dairy products and birds' eggs	43	0,5	21,8	293	0,5	11,5
05	Vegetables and fruit	88	1,1	2,7	710	1,2	-2,1
<b>1</b>	<b>Beverages and tobacco</b>	<b>52</b>	<b>0,7</b>	<b>20,4</b>	<b>431</b>	<b>0,7</b>	<b>21,9</b>
<b>2</b>	<b>Crude materials, inedible, except fuels</b>	<b>717</b>	<b>9,0</b>	<b>32,0</b>	<b>5 820</b>	<b>9,4</b>	<b>27,4</b>
212	Furskins, raw	0	0,0	-99,0	125	0,2	-15,5
24	Cork and wood	48	0,6	-16,9	328	0,5	-29,2
248	Wood, simply worked	7	0,1	-64,6	116	0,2	-4,3
25	Pulp and waste paper	20	0,3	140,6	142	0,2	146,2
28	Metalliferous ores and metal scrap	560	7,0	42,5	4 652	7,5	34,4
<b>3</b>	<b>Mineral fuels etc</b>	<b>1 790</b>	<b>22,5</b>	<b>116,7</b>	<b>12 395</b>	<b>20,1</b>	<b>134,5</b>
33	Petroleum and products	1 107	13,9	91,2	8 413	13,6	126,5
<b>4</b>	<b>Animal, vegetable oil, fat</b>	<b>64</b>	<b>0,8</b>	<b>10,5</b>	<b>486</b>	<b>0,8</b>	<b>106,5</b>
<b>5</b>	<b>Chemicals and related products, nes</b>	<b>867</b>	<b>10,9</b>	<b>30,1</b>	<b>6 584</b>	<b>10,7</b>	<b>27,0</b>
51+52	Organic and inorganic chemicals	279	3,5	71,3	1 926	3,1	54,2
54	Medicinal, pharm. products	198	2,5	5,2	1 565	2,5	4,4
57+58	Plastics in primary and non-primary forms	176	2,2	14,4	1 413	2,3	24,2
<b>6</b>	<b>Basic manufactures</b>	<b>955</b>	<b>12,0</b>	<b>25,9</b>	<b>8 117</b>	<b>13,2</b>	<b>42,1</b>
63	Wood and cork manufactures	29	0,4	1,5	277	0,4	25,0
634	Plywood, particle board etc	12	0,2	-14,8	147	0,2	25,3
64	Paper, paperboard and articles thereof	60	0,8	21,4	474	0,8	23,6
65	Textile yarn, fabrics, made up articles, etc	65	0,8	15,7	521	0,8	6,0
67	Iron and steel	218	2,7	15,6	2 140	3,5	65,8
68	Non-ferrous metals	168	2,1	25,7	1 643	2,7	85,0
69	Manufactures of metals, nes	272	3,4	51,8	1 905	3,1	26,3
<b>7</b>	<b>Machinery, transport equipmt</b>	<b>2 062</b>	<b>25,9</b>	<b>24,6</b>	<b>17 279</b>	<b>28,0</b>	<b>17,3</b>
71	Power generating machinery and equipment	182	2,3	31,1	1 702	2,8	39,7
72	Machinery for special industries	158	2,0	17,1	1 406	2,3	13,7
74	General industrial machinery, nes	309	3,9	22,2	2 521	4,1	16,4
75	Office machines and adp machines	139	1,8	3,5	1 138	1,8	0,9
76	Telecomm, sound recording equipment	198	2,5	9,3	1 430	2,3	1,9
77	Electric machinery, nes and parts	534	6,7	47,2	3 971	6,4	33,0
78	Road vehicles	479	6,0	17,0	4 393	7,1	5,5
79	Other transport equipment	40	0,5	113,1	556	0,9	89,4
793	Ships and boats etc	10	0,1	100,9	317	0,5	288,3
<b>8</b>	<b>Miscellaneous manufactured articles</b>	<b>665</b>	<b>8,4</b>	<b>19,1</b>	<b>4 671</b>	<b>7,6</b>	<b>11,5</b>
82	Furniture and parts thereof	68	0,9	2,5	616	1,0	11,0
84	Articles of apparel and clothing accessories	174	2,2	22,6	1 003	1,6	6,2
85	Footwear	40	0,5	36,8	240	0,4	25,8
87	Instruments and apparatuses, nes	133	1,7	30,1	949	1,5	10,2
<b>9</b>	<b>Goods not classified elsewhere</b>	<b>352</b>	<b>4,4</b>	<b>18,6</b>	<b>2 656</b>	<b>4,3</b>	<b>24,8</b>

**Table 7. Exports and imports by Products by Activity (CPA2015)**

Products by Activity	Exports 2022				Imports 2022			
	August	January-August			August	January-August		
	value MEUR	value MEUR	share %	change %	value MEUR	value MEUR	share %	change %
<b>Total exports / imports</b>	<b>6 652</b>	<b>52 613</b>	<b>100,0</b>	<b>24,9</b>	<b>7 960</b>	<b>61 677</b>	<b>100</b>	<b>36,9</b>
<b>A Products of agriculture, forestry and fishing</b>	<b>46</b>	<b>455</b>	<b>0,9</b>	<b>-12,5</b>	<b>171</b>	<b>1 434</b>	<b>2,3</b>	<b>12,0</b>
<b>B Products from mining and quarrying</b>	<b>56</b>	<b>755</b>	<b>1,4</b>	<b>17,8</b>	<b>1 177</b>	<b>9 209</b>	<b>14,9</b>	<b>102,7</b>
061 Crude petroleum	0	0	0,0	22,4	696	5 164	8,4	170,2
<b>C Manufactured goods</b>	<b>6 176</b>	<b>49 158</b>	<b>93,4</b>	<b>24,7</b>	<b>5 693</b>	<b>44 941</b>	<b>72,9</b>	<b>27,4</b>
<b>10-12 Food, beverages and tobacco</b>	<b>153</b>	<b>1 141</b>	<b>2,2</b>	<b>15,8</b>	<b>404</b>	<b>2 867</b>	<b>4,6</b>	<b>17,7</b>
<b>13-15 Textiles, clothes, leather and leather products</b>	<b>67</b>	<b>512</b>	<b>1,0</b>	<b>13,1</b>	<b>281</b>	<b>1 749</b>	<b>2,8</b>	<b>17,5</b>
<b>16-18 Forest industry products</b>	<b>1 320</b>	<b>9 381</b>	<b>17,8</b>	<b>12,4</b>	<b>135</b>	<b>1 128</b>	<b>1,8</b>	<b>18,3</b>
16 Wood and wood products	266	2 812	5,3	23,3	54	507	0,8	1,7
17 Paper, paper and paperboard products, pulp	1 054	6 568	12,5	8,2	81	618	1	36,8
<b>19-22 Chemical industry products</b>	<b>1 425</b>	<b>11 714</b>	<b>22,3</b>	<b>56,7</b>	<b>1 533</b>	<b>11 805</b>	<b>19,1</b>	<b>40,2</b>
19 Coke and petroleum products	557	4 357	8,3	120,7	474	3 521	5,7	86,9
20 Chemicals and chemical products	640	5 312	10,1	43,0	668	5 149	8,3	43,6
21 Pharmaceutical products and pharmaceutical preparations	80	817	1,6	12,3	204	1 596	2,6	5,1
22 Rubber and plastic products	148	1 227	2,3	15,7	187	1 539	2,5	7,7
<b>23 Other non-metallic mineral products</b>	<b>52</b>	<b>428</b>	<b>0,8</b>	<b>9,7</b>	<b>93</b>	<b>711</b>	<b>1,2</b>	<b>22,6</b>
<b>24-25 Metal and metal products</b>	<b>1 192</b>	<b>9 783</b>	<b>18,6</b>	<b>34,0</b>	<b>848</b>	<b>6 944</b>	<b>11,3</b>	<b>55,1</b>
24 Basic metals	1 055	8 703	16,5	37,5	565	4 950	8	70,3
25 Fabricated metal products (excl. machinery and equipment)	137	1 079	2,1	10,9	283	1 994	3,2	26,9
<b>26-27 Electric and electronics industry products</b>	<b>813</b>	<b>5 788</b>	<b>11,0</b>	<b>17,8</b>	<b>1 027</b>	<b>7 644</b>	<b>12,4</b>	<b>20,2</b>
26 Computers, electronic and optical products	366	2 650	5,0	15,0	585	4 309	7	12,9
263 Communication equipment	67	453	0,9	-6,7	144	1 008	1,6	3,6
27 Electrical equipment	446	3 138	6,0	20,2	443	3 335	5,4	31,1
<b>28 Machinery and equipment</b>	<b>707</b>	<b>6 158</b>	<b>11,7</b>	<b>8,1</b>	<b>602</b>	<b>4 996</b>	<b>8,1</b>	<b>17,5</b>
<b>29-30 Transport equipment</b>	<b>307</b>	<b>3 102</b>	<b>5,9</b>	<b>8,6</b>	<b>578</b>	<b>5 560</b>	<b>9</b>	<b>12,5</b>
29 Motor vehicles	228	2 461	4,7	6,0	503	4 603	7,5	4,9
30 Other transport equipment	80	641	1,2	20,3	75	957	1,6	71,9
<b>31-33 Other manufactured goods</b>	<b>138</b>	<b>1 152</b>	<b>2,2</b>	<b>16,5</b>	<b>192</b>	<b>1 537</b>	<b>2,5</b>	<b>13,0</b>
<b>D Electricity, gas, steam, air conditioning *</b>	<b>133</b>	<b>540</b>	<b>1,0</b>	<b>107,9</b>	<b>450</b>	<b>1 933</b>	<b>3,1</b>	<b>125,2</b>
<b>E-X Other products</b>	<b>242</b>	<b>1 705</b>	<b>3,2</b>	<b>31,4</b>	<b>470</b>	<b>4 160</b>	<b>6,7</b>	<b>34,5</b>
E 381158 Metal waste	0	0	0,0	-100,0	0	2	0	-99,8

\* Natural gas B 062

Starting from the statistical year 2022, international trade in goods statistics by CPA-classification are published only according to CPA2015 classification.

**Table 8. Imports and exports by BEC goods classification (Broad Economic Categories)**

BEC Rev.4		August 2022			January-August 2022		
		value MEUR	share %	change %	value MEUR	share %	change %
<b>Total imports</b>		<b>7 960</b>	<b>100,0</b>	<b>38,4</b>	<b>61 677</b>	<b>100,0</b>	<b>36,9</b>
1	Food and beverages	465	5,8	23,9	3 427	5,6	21,1
2	Industrial supplies not elsewhere specified	2 469	31,0	25,9	19 928	32,3	32,6
3	Fuels and lubricants	1 766	22,2	119,6	12 236	19,8	134,8
31	Primary	852	10,7	113,7	6 791	11,0	178,6
32	Processed	914	11,5	125,3	5 445	8,8	96,3
4	Capital goods (except transport equipment), and parts and accessories thereof	1 463	18,4	29,2	11 524	18,7	23,1
5	Transport equipment and parts and accessories thereof	710	8,9	22,5	6 595	10,7	15,0
6	Consumer goods not elsewhere specified	743	9,3	21,4	5 369	8,7	12,1
61	Durable	132	1,7	2,9	1 144	1,9	5,1
62	Semi-durable	311	3,9	25,1	2 082	3,4	20,4
63	Non-durable	300	3,8	27,6	2 143	3,5	8,7
7	Goods not elsewhere specified	344	4,3	20,5	2 598	4,2	24,2
<b>Total exports</b>		<b>6 652</b>	<b>100,0</b>	<b>28,9</b>	<b>52 613</b>	<b>100,0</b>	<b>24,9</b>
1	Food and beverages	168	2,5	23,0	1 229	2,3	21,4
2	Industrial supplies not elsewhere specified	3 476	52,3	24,5	27 384	52,0	22,7
3	Fuels and lubricants	712	10,7	59,6	5 180	9,8	117,0
31	Primary	1	0,0	-30,8	120	0,2	491,1
32	Processed	711	10,7	60,0	5 060	9,6	113,8
4	Capital goods (except transport equipment), and parts and accessories thereof	1 534	23,1	27,2	12 045	22,9	13,2
5	Transport equipment and parts and accessories thereof	411	6,2	34,7	3 987	7,6	14,0
6	Consumer goods not elsewhere specified	209	3,1	24,3	1 758	3,3	19,2
61	Durable	30	0,5	24,3	227	0,4	4,0
62	Semi-durable	85	1,3	18,1	653	1,2	23,7
63	Non-durable	93	1,4	30,5	878	1,7	20,5
7	Goods not elsewhere specified	141	2,1	34,1	1 030	2,0	28,8

**Table 9. Trade by regions and countries**

Origin/ destination	Imports 2022				Exports 2022				Trade 2022	
	August January-August				August January-August				August January-August	
	value MEUR	value MEUR	share %	change %	value MEUR	value MEUR	share %	change %	value MEUR	value MEUR
<b>Total exports / imports</b>	<b>7 960</b>	<b>61 677</b>	<b>100,0</b>	<b>36,9</b>	<b>6 652</b>	<b>52 613</b>	<b>100</b>	<b>24,9</b>	<b>-1 308</b>	<b>-9 064</b>
EU	4 267	33 368	54,1	24,8	3 811	30 316	57,6	30,8	-456	-3 052
Euro zone	2 570	21 180	34,3	20,0	2 618	20 933	39,8	29,9	48	-248
External trade	3 693	28 309	45,9	54,6	2 841	22 297	42,4	17,6	-852	-6 012
Developing countries	1 619	11 492	18,6	45,1	1 154	8 241	15,7	19,9	-465	-3 251
<b>Europe</b>	<b>5 662</b>	<b>46 196</b>	<b>74,9</b>	<b>34,0</b>	<b>4 573</b>	<b>37 193</b>	<b>70,7</b>	<b>23,8</b>	<b>-1 089</b>	<b>-9 003</b>
<b>EU</b>	<b>4 267</b>	<b>33 368</b>	<b>54,1</b>	<b>24,8</b>	<b>3 811</b>	<b>30 316</b>	<b>57,6</b>	<b>30,8</b>	<b>-456</b>	<b>-3 052</b>
AT Austria	67	585	0,9	18,4	43	378	0,7	19,0	-24	-207
BE Belgium	111	1 131	1,8	11,7	238	1 914	3,6	38,9	127	783
BG Bulgaria	12	76	0,1	35,4	8	64	0,1	2,7	-3	-12
CY Cyprus	2	10	0,0	-0,4	2	22	0	65,2	0	12
CZ Czech Republic	83	746	1,2	13,6	45	371	0,7	32,5	-38	-375
DE Germany	965	7 963	12,9	15,8	810	6 518	12,4	15,6	-155	-1 445
DK Denmark	131	1 198	1,9	7,0	124	947	1,8	27,3	-6	-251
EE Estonia	319	2 123	3,4	47,5	309	2 177	4,1	55,2	-10	55
ES Spain	119	1 151	1,9	5,7	123	828	1,6	27,0	4	-322
FR France	170	1 322	2,1	14,4	178	1 658	3,2	25,9	8	336
GR Greece	8	130	0,2	28,1	12	140	0,3	17,7	4	10
HU Hungary	50	333	0,5	13,2	26	173	0,3	21,2	-24	-160
HR Croatia	4	34	0,1	22,1	5	37	0,1	32,9	1	2
IE Ireland	67	432	0,7	0,8	20	155	0,3	18,9	-48	-277
IT Italy	165	1 518	2,5	18,7	162	1 609	3,1	26,2	-3	91
LT Lithuania	50	485	0,8	31,4	95	634	1,2	23,6	46	150
LU Luxembourg	12	87	0,1	62,9	4	26	0	5,1	-9	-61
LV Latvia	49	269	0,4	28,0	60	515	1	23,8	11	246
MT Malta	1	6	0,0	-16,4	1	6	0	55,4	1	0
NL Netherlands	364	3 238	5,2	29,4	513	3 991	7,6	50,7	149	753
PL Poland	234	2 007	3,3	31,2	198	1 657	3,2	31,8	-35	-349
PT Portugal	54	367	0,6	19,3	26	159	0,3	37,2	-28	-208
RO Romania	27	215	0,3	9,1	20	171	0,3	58,6	-7	-44
SE Sweden	1 158	7 579	12,3	45,6	707	5 748	10,9	31,3	-451	-1 830
SI Slovenia - Slovenien - Slovenia	18	121	0,2	28,4	6	55	0,1	16,0	-12	-66
SK Slovakia	30	244	0,4	11,1	16	147	0,3	45,2	-14	-97
<b>Rest of Europe</b>	<b>1 395</b>	<b>12 829</b>	<b>20,8</b>	<b>65,9</b>	<b>762</b>	<b>6 877</b>	<b>13,1</b>	<b>0,0</b>	<b>-633</b>	<b>-5 951</b>
CH Switzerland	64	539	0,9	40,3	121	933	1,8	17,8	57	394
GB United Kingdom	136	1 546	2,5	79,3	202	1 916	3,6	21,8	66	370
XI Northern Ireland	2	16	0,0	-25,3	4	37	0,1	10,4	2	21
IS Iceland	6	18	0,0	63,3	6	54	0,1	73,4	0	35
NO Norway	761	4 607	7,5	377,1	199	1 440	2,7	32,4	-563	-3 167
RU Russia	317	5 107	8,3	6,6	83	1 558	3	-35,0	-234	-3 549
TR Türkiye	84	665	1,1	41,1	112	683	1,3	13,6	28	17
UA Ukraine	6	65	0,1	10,8	16	85	0,2	-43,0	11	21
<b>North Africa</b>	<b>10</b>	<b>93</b>	<b>0,2</b>	<b>31,3</b>	<b>59</b>	<b>494</b>	<b>0,9</b>	<b>6,1</b>	<b>49</b>	<b>401</b>
EG Egypt	5	39	0,1	48,1	41	289	0,5	9,4	36	251
MA Morocco	4	42	0,1	36,9	9	88	0,2	19,4	5	46
<b>Rest of Africa</b>	<b>83</b>	<b>839</b>	<b>1,4</b>	<b>96,0</b>	<b>69</b>	<b>582</b>	<b>1,1</b>	<b>29,5</b>	<b>-14</b>	<b>-258</b>
ZA South Africa	15	164	0,3	20,9	38	300	0,6	39,1	22	136
<b>Middle East</b>	<b>77</b>	<b>256</b>	<b>0,4</b>	<b>195,3</b>	<b>103</b>	<b>720</b>	<b>1,4</b>	<b>30,5</b>	<b>26</b>	<b>463</b>
AE Arab Emirates	2	18	0,0	99,0	20	219	0,4	94,8	19	201
IL Israel	6	69	0,1	64,7	12	145	0,3	8,6	6	76
SA Saudi Arabia	2	22	0,0	13,4	26	197	0,4	-1,8	24	175
<b>Rest of Asia</b>	<b>1 379</b>	<b>9 606</b>	<b>15,6</b>	<b>41,7</b>	<b>883</b>	<b>6 396</b>	<b>12,2</b>	<b>16,1</b>	<b>-496</b>	<b>-3 210</b>
CN China	795	5 575	9,0	45,2	347	2 525	4,8	5,8	-448	-3 050
HK Hong Kong	12	60	0,1	60,0	8	66	0,1	-25,7	-4	6
ID Indonesia	28	134	0,2	12,6	33	138	0,3	3,7	5	4
IN India	54	411	0,7	56,5	62	433	0,8	30,1	8	21
JP Japan	86	608	1,0	17,0	148	1 277	2,4	33,8	62	669
KR South Korea	71	488	0,8	34,2	113	704	1,3	42,1	42	216
KZ Kazakhstan	17	76	0,1	>999	25	120	0,2	107,5	8	44
MY Malaysia	72	348	0,6	10,3	18	116	0,2	25,6	-53	-232
PH Philippines	18	141	0,2	32,6	8	101	0,2	-6,3	-9	-40
SG Singapore	8	175	0,3	8,0	18	121	0,2	11,3	10	-54
TH Thailand	39	314	0,5	54,3	18	154	0,3	-7,2	-21	-160
TW Taiwan	71	533	0,9	107,8	19	166	0,3	-19,3	-52	-367
<b>North America</b>	<b>493</b>	<b>2 863</b>	<b>4,6</b>	<b>58,3</b>	<b>664</b>	<b>4 850</b>	<b>9,2</b>	<b>42,2</b>	<b>170</b>	<b>1 988</b>
CA Canada	91	567	0,9	84,4	78	579	1,1	7,3	-13	13
US USA	403	2 296	3,7	53,0	586	4 268	8,1	48,8	184	1 973
<b>Middle America</b>	<b>45</b>	<b>350</b>	<b>0,6</b>	<b>-13,5</b>	<b>53</b>	<b>452</b>	<b>0,9</b>	<b>26,6</b>	<b>8</b>	<b>101</b>
MX Mexico	22	198	0,3	-25,3	44	371	0,7	77,8	22	173
<b>South America</b>	<b>126</b>	<b>1 106</b>	<b>1,8</b>	<b>31,6</b>	<b>184</b>	<b>1 314</b>	<b>2,5</b>	<b>56,5</b>	<b>58</b>	<b>209</b>
AR Argentina	1	11	0,0	28,1	47	333	0,6	731,1	46	322
BR Brazil	78	571	0,9	92,9	84	503	1	63,7	6	-69
CL Chile	4	72	0,1	-70,2	24	177	0,3	28,3	20	105
CO Colombia	17	172	0,3	246,9	9	104	0,2	51,3	-8	-68
<b>Oceania</b>	<b>85</b>	<b>368</b>	<b>0,6</b>	<b>133,1</b>	<b>64</b>	<b>613</b>	<b>1,2</b>	<b>23,0</b>	<b>-21</b>	<b>245</b>
AU Australia	77	270	0,4	105,0	54	547	1	23,3	-23	278

**Table 10. Volume index, exports 2020=100**

Products by Activity (CPA2015)	August 2022:08	Change	Change	Effect*	Mean** 2021:09– 2022:08	Change	Weights 2021
		2022:08/ 2022:07	2022:08/ 2021:08	pp 2022:08/ 2021:08		2021:09– 2022:08	
Total exports	95,1	2,6	4,4	4,40	102,7	-0,5	1000,0
01 Products of agriculture and hunting	33,3	-82,2	-33,8	-0,10	81,7	-37,1	7,5
10 Food products	93,8	2,9	-7,0	-0,12	93,7	-7,1	19,0
11 Beverages	141,6	-0,1	9,2	0,02	127,6	16,9	2,7
13 Textiles	85,3	0,0	-1,8	-0,01	100,0	-3,7	5,0
14 Wearing apparel	105,7	6,6	-2,3	-0,01	92,1	-5,1	3,5
15 Leather and related products	129,3	28,8	3,4	0,00	113,9	8,9	2,3
16 Wood and wood products	83,3	-2,6	-6,4	-0,23	106,7	-3,4	54,6
171 Pulp, paper and paperboard	103,1	0,8	0,7	0,07	92,8	-11,6	130,8
172 Articles of paper and paperboard	113,4	10,2	22,3	0,06	108,1	9,5	3,9
19 Coke and refined petroleum products	73,9	-12,3	-12,1	-0,46	84,4	1,0	54,7
20 Chemicals and chemical products	102,6	3,8	2,6	0,17	110,7	6,4	88,8
21 Basic pharmaceutical products and preparations	79,5	-31,1	5,0	0,04	95,9	-13,6	16,3
22 Rubber and plastic products	96,2	4,6	-13,6	-0,29	109,8	3,6	24,2
23 Other non-metallic mineral products	105,5	16,6	-7,1	-0,06	117,3	3,4	8,3
241 Basic iron and steel and ferro-alloys	96,3	11,9	-7,0	-0,37	106,1	-3,1	67,9
244 Basic precious and other non-ferrous metals	93,1	26,4	19,0	0,77	90,0	-5,5	66,4
25 Fabricated metal products	101,4	16,3	2,7	0,04	104,1	-1,2	20,0
26 Computer, electronic and optical products	129,6	15,3	19,7	0,91	117,4	7,2	53,5
27 Electrical equipment	141,0	12,7	35,9	1,77	123,5	20,2	59,2
28 Machinery and equipment	89,9	-0,5	6,7	0,59	103,4	1,8	129,3
29 Motor vehicles and trailers	82,2	33,6	57,2	1,38	114,4	3,5	57,5
38 Waste collection, treatment and disposal services	112,3	9,7	31,4	0,07	105,3	7,8	0,3
58 Publishing services	164,0	197,7	94,6	0,03	109,7	9,8	0,5

\*Effect of change

\*\* Moving 12-month averages

**Table 11. Volume index, imports 2020=100**

Products by Activity (CPA2015)	August 2022:08	Change	Change	Effect*	Mean**	Change	Weights
		2022:08/ 2022:07	2022:08/ 2021:08	2022:08/ 2021:08	2021:09- 2022:08	2021:09-2022:08/ 2020:09-2021:08	2021
		%	%	pp		%	%
Total imports	104,7	0,3	9,7	9,70	106,5	5,6	1000,0
01 Products of agriculture and hunting	78,2	4,8	-18,0	-0,29	99,6	-0,6	19,2
061 Crude petroleum	100,8	24,7	24,0	0,74	92,0	19,3	49,2
07 Metal ores	118,9	-30,4	30,6	0,85	117,5	0,9	39,7
10 Food products	99,9	22,3	6,2	0,24	91,8	-3,7	44,0
13 Textiles	77,4	12,6	-2,0	-0,02	79,7	-15,7	9,4
14 Wearing apparel	137,1	23,1	21,7	0,37	94,0	2,6	15,8
15 Leather and related products	139,9	22,7	19,6	0,11	106,3	11,1	5,7
16 Wood and wood products	62,1	1,7	-29,0	-0,24	87,4	-9,9	10,7
19 Coke and refined petroleum products	123,9	12,2	27,2	0,83	102,3	4,3	39,7
20 Chemicals and chemical products	117,3	10,5	16,9	1,13	113,5	12,9	80,6
21 Basic pharmaceutical products and preparations	90,1	13,0	-5,9	-0,16	96,0	-3,7	31,3
22 Rubber and plastic products	100,1	0,9	-4,5	-0,12	106,7	-1,0	29,7
23 Other non-metallic mineral products	110,8	3,8	9,1	0,10	107,0	4,8	12,2
241 Basic iron and steel and ferro-alloys	91,9	-25,3	-20,7	-0,37	113,8	12,4	21,0
244 Basic precious and other non-ferrous metals	124,1	-21,0	38,4	0,95	115,8	27,8	37,5
25 Fabricated metal products	140,9	23,9	23,5	0,73	127,2	12,0	33,1
26 Computer, electronic and optical products	114,1	8,4	8,4	0,66	114,9	5,0	86,2
27 Electrical equipment	130,7	3,1	18,3	0,99	126,8	18,2	57,0
28 Machinery and equipment	113,3	-5,0	9,5	0,75	120,5	11,9	88,9
29 Motor vehicles and trailers	93,1	9,1	12,7	0,84	109,8	-2,8	93,3
35 Electricity, gas, steam and air conditioning Waste collection, treatment	98,8	-13,5	-22,9	-0,47	107,5	-2,2	23,8
38 and disposal services	137,0	-5,4	45,1	0,23	125,0	19,6	0,4

\*Effect of change

\*\* Moving 12-month averages

**Table 12. Unit value index, exports 2020=100**

Products by Activity (CPA2015)	August 2022:08	Change 2022:08/ 2022:07	Change 2022:08/ 2021:08	Effect* 2022:08/ 2021:08	Mean** 2021:09– 2022:08	Change 2021:09–2022:08/ 2020:09–2021:08	Weights 2021 %
Total exports	146,0	-0,8	23,6	23,60	134,2	26,6	1000,0
01 Products of agriculture and hunting	120,8	-1,4	7,1	0,04	119,8	6,0	7,5
10 Food products	133,2	-0,1	24,6	0,40	117,9	16,0	19,0
11 Beverages	111,0	-0,5	13,5	0,02	106,5	7,4	2,7
13 Textiles	114,0	3,2	8,1	0,03	108,9	7,7	5,0
14 Wearing apparel	110,1	0,6	11,1	0,03	108,7	7,1	3,5
15 Leather and related products	121,4	5,9	19,9	0,03	112,1	6,7	2,3
16 Wood and wood products	158,3	-7,9	-8,1	-0,54	165,8	38,1	54,6
171 Pulp, paper and paperboard	156,3	3,6	33,3	3,94	133,1	28,2	130,8
172 Articles of paper and paperboard	132,4	1,5	22,5	0,07	119,5	17,5	3,9
19 Coke and refined petroleum products	258,2	-8,6	76,3	4,92	214,8	79,9	54,7
20 Chemicals and chemical products	156,0	-4,5	26,9	2,21	145,0	34,2	88,8
21 Basic pharmaceutical products and preparations	130,7	2,7	26,2	0,34	139,0	38,5	16,3
22 Rubber and plastic products	131,8	0,2	17,3	0,36	119,2	14,9	24,2
23 Other non-metallic mineral products	122,2	3,6	18,2	0,12	110,2	9,2	8,3
241 Basic iron and steel and ferro-alloys	194,5	-4,4	34,4	2,42	173,4	55,3	67,9
244 Basic precious and other non-ferrous metals	165,5	-1,6	30,6	1,99	159,4	35,1	66,4
25 Fabricated metal products	118,1	-0,1	12,6	0,20	111,3	10,3	20,0
26 Computer, electronic and optical products	106,1	-3,6	6,6	0,27	106,9	7,2	53,5
27 Electrical equipment	104,1	3,4	3,6	0,16	100,3	-2,3	59,2
28 Machinery and equipment	114,3	-0,8	8,6	0,93	109,3	7,1	129,3
29 Motor vehicles and trailers	94,8	-7,8	-6,6	-0,31	101,8	3,0	57,5
38 Waste collection, treatment and disposal services	175,9	-1,4	22,7	0,08	168,8	35,5	0,3
58 Publishing services	101,7	-5,9	-4,2	-0,01	107,1	5,3	0,5

\*Effect of change

\*\* Moving 12-month averages

**Table 13. Unit value index, imports 2020=100**

Products by Activity (CPA2015)	August 2022:08	Change	Change	Effect*	Mean**	Change	Weights
		% 2022:08/ 2022:07	% 2022:08/ 2021:08	pp 2022:08/ 2021:08		% 2021:09-2022:08/ 2020:09-2021:08	% 2021
Total imports	152,6	1,9	26,2	26,2	139,5	28,6	1000
01 Products of agriculture and hunting	127,8	-0,9	15,5	0,22	123,9	18,1	19,2
061 Crude petroleum	278	-0,1	69,8	3,61	244,9	80,6	49,2
062 Natural gas	1010	52,8	292,6	5,35	642	335,8	14
07 Metal ores	157,5	9,2	6,5	0,23	148,3	19,3	39,7
10 Food products	128,7	-1	23	0,78	117,2	15,1	44
13 Textiles	124	1,4	18,2	0,14	114,5	15,3	9,4
14 Wearing apparel	111,9	3	11,3	0,13	107,4	6,9	15,8
15 Leather and related products	116,8	3,8	13,4	0,05	109,2	6,6	5,7
16 Wood and wood products	154,2	1,7	14,5	0,14	135,6	24,8	10,7
19 Coke and refined petroleum products	237,7	-9	41	1,72	225,1	74,4	39,7
20 Chemicals and chemical products	148,4	-5,9	16,8	1,14	141	28	80,6
21 Basic pharmaceutical products and preparations	130	-4,3	15,4	0,38	119,9	13,4	31,3
22 Rubber and plastic products	124,9	0,9	11,5	0,25	117,7	12,5	29,7
23 Other non-metallic mineral products	122,2	1,3	16,9	0,15	115,1	15,1	12,2
241 Basic iron and steel and ferro-alloys	198	-6,3	38,3	0,69	184,2	61,1	21
244 Basic precious and other non-ferrous metals	168,9	-2,6	10,9	0,38	170,7	28,9	37,5
25 Fabricated metal products	129,5	-0,5	23,5	0,53	119,5	17,9	33,1
26 Computer, electronic and optical products	113,6	2,3	15,4	0,9	108,4	11,8	86,2
27 Electrical equipment	115,6	0	14,3	0,56	109,1	9,4	57
28 Machinery and equipment	115,3	5,3	10	0,64	107,8	6,8	88,9
29 Motor vehicles and trailers	112,1	-1,6	5,3	0,35	109,7	7,2	93,3
35 Electricity, gas, steam and air conditioning	873,9	49	295,1	8,25	417,4	165,6	23,8
38 Waste collection, treatment and disposal services	164,5	1,9	6,7	0,04	158,4	27,2	0,4

\*Effect of change

\*\* Moving 12-month averages



Monthly statistics on the international trade in goods, August 2022  
2022:K08EN, 31.10.2022

## Inquiries:

Kaarna, Anssi

tel. +358 40 332 8153

Telasuo, Christina

tel. +358 40 332 1828

E-mail: [forename.surname@tulli.fi](mailto:forename.surname@tulli.fi)

The preliminary statistics and monthly statistics on the international trade for September 2022 will be published on the following dates:

Preliminary statistics 2022:E09      7.11.2022

Monthly statistics 2022:K09      30.11.2022

More specific data on countries and goods, as well as statistics on logistics, are available free of charge via the the Uljas statistical database (ULJAS) [uljas.tulli.fi](http://uljas.tulli.fi)

ISSN 1796-0479 = Official Statistics of Finland (pdf)

ISSN 2342-2335 = Monthly statistics on the international trade in goods (online)

## Contact information:

Finnish Customs  
StatisticsOpastinsilta 12  
PO Box 512  
FI-00101 HelsinkiExchange + 358 295 5200  
Statistics service + 358 295 52335  
[statistics@tulli.fi](mailto:statistics@tulli.fi)