

# Preliminary statistics on the international trade in goods February 2020

## Exports decreased by 15.2 per cent in February UK included in external trade from February and onwards

According to the preliminary statistics of international trade in goods provided by Finnish Customs, the value of Finnish exports decreased by 15.2 per cent while the value of imports decreased by 2.5 per cent in February year-on-year. The value of Finnish exports in February was almost 4.4 billion euros and the value of imports was slightly over 5.1 billion euros. Calculated from the beginning of the year, exports decreased by 16.2 per cent and imports by 2.9 per cent year-on-year.

The trade balance showed a deficit of 770 million euros in February. Calculated from January to February there was a deficit of almost 1.1 billion euros. Under the same period last year, the balance of trade showed a surplus of 395 million euros. Last year the trade balance for February showed a deficit of 120 million euros.

United Kingdom withdrew from the EU January 31st 2020. UK data has been excluded from the group EU-countries and included in the group external trade from February 2020 publication onwards in international trade in goods statistics provided by Finnish Customs. For comparability and consistency of time series the data has also been transferred retrospectively. This applies also to the trend and seasonally adjusted time series. The transfer has an impact on the value, change and shares for the groups "EU-countries" and "external trade" but not on total values of international trade or on data for Euro-countries.

Exports to EU member states decreased by 14.6 per cent in February and exports to non-EU countries by 15.8 per cent. Imports from EU-countries diminished by 1.9 per cent and imports from non-EU countries fell by 3.3 per cent in February. Calculated from the beginning of the year, exports to EU decreased by 18.4 per cent and to non-EU countries by 13.2 per cent. During the same period, imports from EU member states fell by 3.2 per cent and from other countries by 2.6 per cent.

---

Helsinki 7.4.2020. Free for publication at 9.00 a.m.

Quoting is encouraged provided Finnish Customs is acknowledged as the source.

**Table 1: Exports 2018-2020, million euro\*\***

Month	Total			EU total			Euro zone			External trade		
	2018	2019*	2020*	2018	2019*	2020*	2018	2019*	2020*	2018	2019*	2020*
1	5 214	5 840	4 845	2 864	3 435	2 695	2 009	2 535	1 840	2 350	2 405	2 150
2	4 807	5 145	4 365	2 647	2 840	2 425	1 810	2 020	1 725	2 160	2 305	1 940
3	5 411	5 490		3 003	3 025		2 153	2 115		2 408	2 465	
4	5 610	5 505		3 355	2 960		2 480	2 040		2 255	2 545	
5	5 368	5 820		2 985	3 270		2 066	2 250		2 383	2 550	
6	5 431	5 260		2 982	2 800		2 067	1 925		2 448	2 460	
7	5 004	5 070		2 684	2 630		1 870	1 890		2 320	2 440	
8	5 101	5 070		2 678	2 760		1 750	1 870		2 423	2 310	
9	5 200	5 300		2 843	2 855		1 956	1 960		2 358	2 445	
10	5 811	5 755		3 209	3 110		2 219	2 160		2 602	2 645	
11	5 776	5 110		3 145	2 780		2 160	1 895		2 632	2 330	
12	4 948	5 630		2 642	3 410		1 822	2 585		2 306	2 220	
<b>Feb</b>	<b>4 807</b>	<b>5 145</b>	<b>4 365</b>	<b>2 647</b>	<b>2 840</b>	<b>2 425</b>	<b>1 810</b>	<b>2 020</b>	<b>1 725</b>	<b>2 160</b>	<b>2 305</b>	<b>1 940</b>
<b>Change</b>		<b>7,0 %</b>	<b>-15,2 %</b>		<b>7,3 %</b>	<b>-14,6 %</b>		<b>11,6 %</b>	<b>-14,6 %</b>		<b>6,7 %</b>	<b>-15,8 %</b>
<b>Cum. 1-2</b>	<b>10 021</b>	<b>10 985</b>	<b>9 210</b>	<b>5 511</b>	<b>6 275</b>	<b>5 120</b>	<b>3 819</b>	<b>4 555</b>	<b>3 565</b>	<b>4 510</b>	<b>4 710</b>	<b>4 090</b>
<b>Change</b>		<b>9,6 %</b>	<b>-16,2 %</b>		<b>13,9 %</b>	<b>-18,4 %</b>		<b>19,3 %</b>	<b>-21,7 %</b>		<b>4,4 %</b>	<b>-13,2 %</b>

**Table 2: Imports 2018-2020, million euro\*\***

Month	Total			EU total			Euro zone			External trade		
	2018	2019*	2020*	2018	2019*	2020*	2018	2019*	2020*	2018	2019*	2020*
1	5 446	5 325	5 145	2 923	2 980	2 845	1 939	1 910	1 890	2 523	2 345	2 300
2	5 170	5 265	5 135	3 003	3 150	3 090	2 047	2 115	2 095	2 167	2 115	2 045
3	5 730	5 615		3 284	3 280		2 220	2 210		2 445	2 335	
4	5 461	5 840		3 175	3 440		2 146	2 335		2 286	2 400	
5	5 620	5 840		3 272	3 460		2 210	2 360		2 348	2 380	
6	5 587	5 185		3 359	3 050		2 256	2 045		2 228	2 135	
7	5 389	5 570		2 932	3 085		1 952	2 040		2 457	2 485	
8	5 624	5 335		3 058	2 995		2 017	1 930		2 565	2 340	
9	5 339	5 520		2 966	3 265		1 959	2 165		2 373	2 255	
10	6 054	5 765		3 540	3 340		2 284	2 220		2 514	2 425	
11	5 790	5 250		3 330	3 065		2 153	2 000		2 460	2 185	
12	5 376	5 295		3 091	2 990		2 071	2 010		2 285	2 305	
<b>Feb</b>	<b>5 170</b>	<b>5 265</b>	<b>5 135</b>	<b>3 003</b>	<b>3 150</b>	<b>3 090</b>	<b>2 047</b>	<b>2 115</b>	<b>2 095</b>	<b>2 167</b>	<b>2 115</b>	<b>2 045</b>
<b>Change</b>		<b>1,8 %</b>	<b>-2,5 %</b>		<b>4,9 %</b>	<b>-1,9 %</b>		<b>3,3 %</b>	<b>-0,9 %</b>		<b>-2,4 %</b>	<b>-3,3 %</b>
<b>Cum. 1-2</b>	<b>10 616</b>	<b>10 590</b>	<b>10 280</b>	<b>5 926</b>	<b>6 130</b>	<b>5 935</b>	<b>3 986</b>	<b>4 025</b>	<b>3 985</b>	<b>4 690</b>	<b>4 460</b>	<b>4 345</b>
<b>Change</b>		<b>-0,2 %</b>	<b>-2,9 %</b>		<b>3,4 %</b>	<b>-3,2 %</b>		<b>1,0 %</b>	<b>-1,0 %</b>		<b>-4,9 %</b>	<b>-2,6 %</b>

**Table 3: Trade balance 2018-2020, million euro\*\***

Month	Total			EU total			Euro zone			External trade		
	2018	2019*	2020*	2018	2019*	2020*	2018	2019*	2020*	2018	2019*	2020*
1	-232	515	-300	-60	455	-150	70	625	-50	-172	60	-150
2	-363	-120	-770	-356	-310	-665	-237	-95	-370	-7	190	-105
3	-319	-125		-282	-255		-67	-95		-37	130	
4	148	-335		179	-480		334	-295		-31	145	
5	-253	-20		-287	-190		-144	-110		35	170	
6	-156	75		-376	-250		-189	-120		220	325	
7	-384	-500		-247	-455		-82	-150		-137	-45	
8	-523	-265		-380	-235		-267	-60		-143	-30	
9	-138	-220		-123	-410		-3	-205		-15	190	
10	-242	-10		-331	-230		-65	-60		89	220	
11	-13	-140		-185	-285		7	-105		172	145	
12	-428	335		-449	420		-249	575		21	-85	
<b>Cum. 1-2</b>	<b>-595</b>	<b>395</b>	<b>-1 070</b>	<b>-416</b>	<b>145</b>	<b>-815</b>	<b>-167</b>	<b>530</b>	<b>-420</b>	<b>-179</b>	<b>250</b>	<b>-255</b>

\*preliminary data

\*\* GB trade transferred from EU-countries to external trade from 02/2020 publication, also retrospectively

Figure 1. Monthly export, import and trade balance 2018-2020

Finnish Customs Statistics

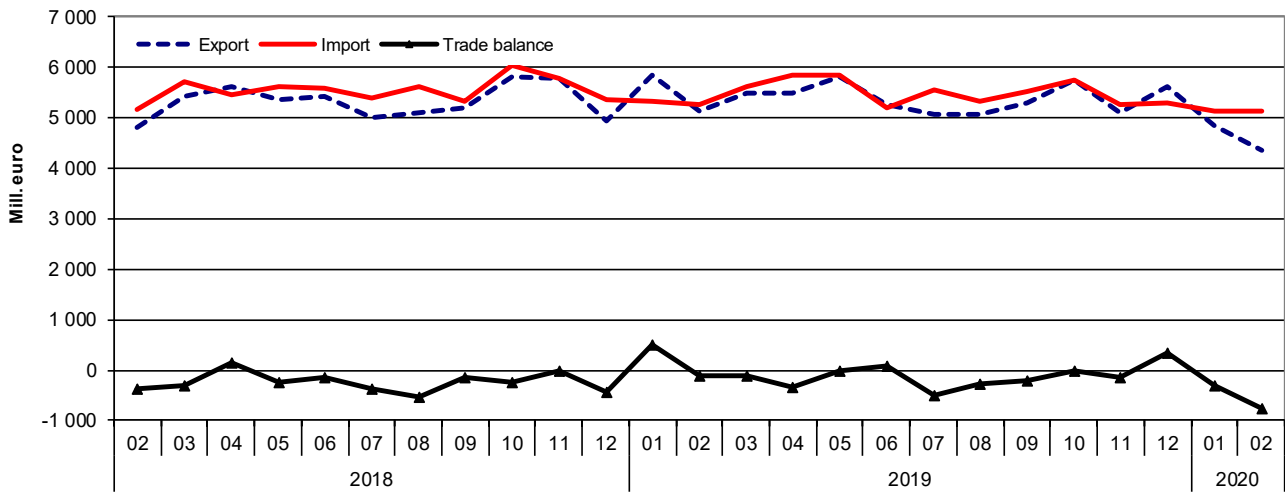


Figure 2. Changes of export values by month compared with the same month of the previous year 2018-2020\*\*

Finnish Customs Statistics

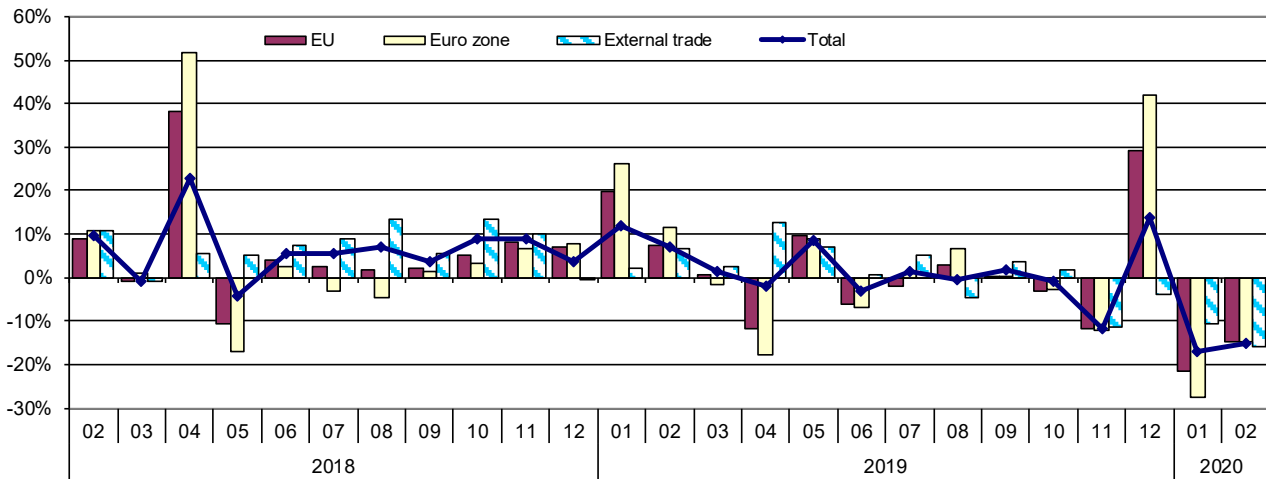
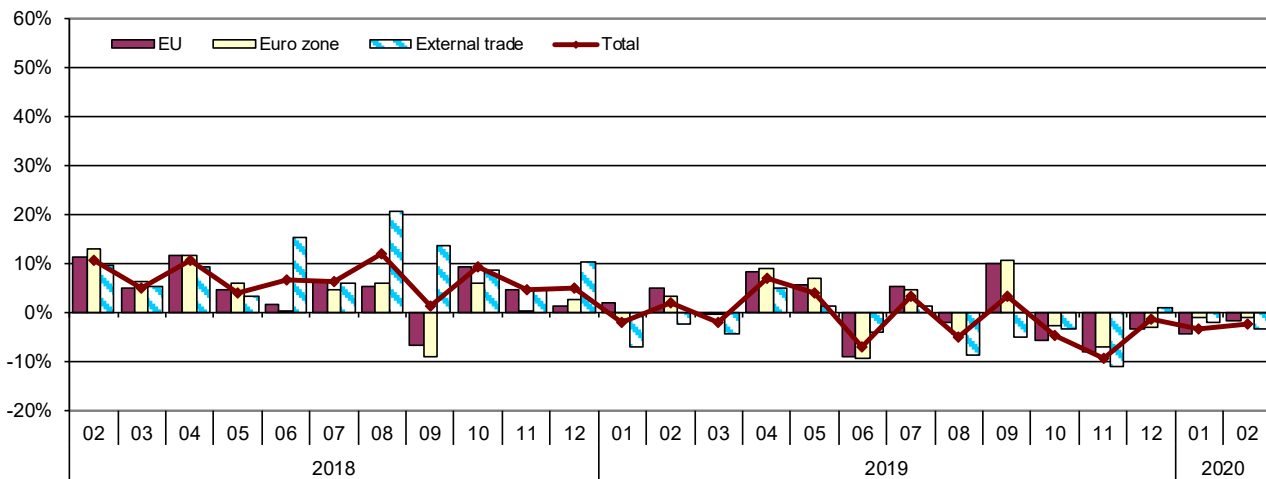


Figure 3. Changes of import values by month compared with the same month of the previous year 2018-2020\*\*

Finnish Customs Statistics



\*\* GB trade transferred from EU-countries to external trade from 02/2020 publication, also retrospectively

**Table 4: Seasonally adjusted values (mill. euro) of export and import, as well as the change (%) from previous month\*\***

**Seasonally adjusted<sup>1</sup> export**

Year	Month	Total	Change	EU total	Change	Euro zone	Change	External trade	Change
2018	1	5 226		2 805		1 938		2 421	
	2	5 151	-1,4	2 792	-0,5	1 892	-2,4	2 359	-2,6
	3	5 171	0,4	2 848	2,0	2 016	6,6	2 323	-1,5
	4	5 642	9,1	3 382	18,8	2 537	25,8	2 259	-2,7
	5	5 170	-8,4	2 827	-16,4	1 961	-22,7	2 343	3,7
	6	5 353	3,5	2 976	5,3	2 057	4,8	2 377	1,4
	7	5 333	-0,4	2 997	0,7	2 022	-1,7	2 336	-1,7
	8	5 199	-2,5	2 747	-8,3	1 825	-9,8	2 452	5,0
	9	5 342	2,8	2 913	6,1	2 038	11,7	2 429	-1,0
	10	5 287	-1,0	2 871	-1,4	2 001	-1,8	2 416	-0,5
	11	5 482	3,7	2 955	2,9	2 033	1,6	2 527	4,6
	12	5 422	-1,1	2 977	0,7	2 070	1,8	2 445	-3,2
2019	1	5 830	7,5	3 356	12,7	2 442	18,0	2 474	1,2
	2	5 515	-5,4	2 991	-10,9	2 111	-13,6	2 523	2,0
	3	5 424	-1,6	2 942	-1,7	2 072	-1,9	2 483	-1,6
	4	5 357	-1,2	2 906	-1,2	1 997	-3,6	2 451	-1,3
	5	5 598	4,5	3 096	6,5	2 137	7,0	2 502	2,1
	6	5 396	-3,6	2 909	-6,0	2 002	-6,3	2 487	-0,6
	7	5 174	-4,1	2 812	-3,3	1 955	-2,4	2 362	-5,0
	8	5 383	4,0	2 951	4,9	2 038	4,3	2 432	3,0
	9	5 226	-2,9	2 813	-4,7	1 951	-4,3	2 413	-0,8
	10	5 229	0,1	2 783	-1,0	1 949	-0,1	2 446	1,4
	11	5 048	-3,5	2 720	-2,3	1 866	-4,2	2 328	-4,8
	12	5 956	18,0	3 693	35,8	2 809	50,5	2 263	-2,8
2020	1	5 051	-15,2	2 746	-25,6	1 856	-33,9	2 304	1,8
	2	4 820	-4,6	2 628	-4,3	1 864	0,5	2 192	-4,9

**Seasonally adjusted<sup>1</sup> import**

Year	Month	Total	Change	EU total	Change	Euro zone	Change	External trade	Change
2018	1	5 493		3 050		2 062		2 443	
	2	5 451	-0,8	3 100	1,7	2 089	1,3	2 351	-3,8
	3	5 425	-0,5	3 132	1,0	2 101	0,5	2 293	-2,5
	4	5 500	1,4	3 158	0,8	2 109	0,4	2 342	2,1
	5	5 499	-0,0	3 120	-1,2	2 094	-0,7	2 380	1,6
	6	5 689	3,5	3 315	6,3	2 209	5,5	2 374	-0,2
	7	5 564	-2,2	3 133	-5,5	2 068	-6,4	2 431	2,4
	8	5 653	1,6	3 166	1,1	2 112	2,1	2 486	2,3
	9	5 488	-2,9	3 046	-3,8	2 032	-3,8	2 442	-1,8
	10	5 599	2,0	3 291	8,0	2 143	5,4	2 308	-5,5
	11	5 647	0,9	3 227	-1,9	2 083	-2,8	2 420	4,9
	12	5 629	-0,3	3 223	-0,1	2 181	4,7	2 406	-0,6
2019	1	5 374	-4,5	3 104	-3,7	2 032	-6,8	2 270	-5,6
	2	5 546	3,2	3 251	4,7	2 158	6,2	2 295	1,1
	3	5 487	-1,1	3 227	-0,7	2 166	0,4	2 260	-1,6
	4	5 695	3,8	3 312	2,6	2 217	2,4	2 383	5,5
	5	5 712	0,3	3 300	-0,4	2 235	0,8	2 412	1,2
	6	5 451	-4,6	3 106	-5,9	2 073	-7,3	2 345	-2,8
	7	5 577	2,3	3 193	2,8	2 086	0,6	2 384	1,7
	8	5 537	-0,7	3 198	0,2	2 092	0,3	2 339	-1,9
	9	5 501	-0,7	3 249	1,6	2 168	3,6	2 252	-3,7
	10	5 330	-3,1	3 104	-4,4	2 081	-4,0	2 226	-1,2
	11	5 282	-0,9	3 065	-1,3	2 003	-3,8	2 216	-0,4
	12	5 377	1,8	3 021	-1,4	2 042	1,9	2 355	6,3
2020	1	5 366	-0,2	3 067	1,5	2 085	2,1	2 298	-2,4
	2	5 532	3,1	3 265	6,4	2 194	5,2	2 267	-1,4

\*\* GB trade transferred from EU-countries to external trade from 02/2020 publication, also retrospectively

**Table 5: Trend figures (mill. euro) of export and import, as well as the change (%) from previous month\*\***

**Trend figures of export<sup>1</sup>**

Year	Month	Total	Change	EU total	Change	Euro zone	Change	External trade	Change
2018	1	5 156		2 792		1 932		2 363	
	2	5 163	0,2	2 810	0,6	1 945	0,7	2 354	-0,4
	3	5 166	0,1	2 829	0,7	1 966	1,1	2 337	-0,7
	4	5 183	0,3	2 852	0,8	1 984	0,9	2 331	-0,2
	5	5 221	0,7	2 878	0,9	1 995	0,6	2 344	0,5
	6	5 260	0,7	2 897	0,7	1 995	0,0	2 362	0,8
	7	5 276	0,3	2 893	-0,2	1 979	-0,8	2 383	0,9
	8	5 283	0,1	2 875	-0,6	1 966	-0,7	2 408	1,0
	9	5 307	0,4	2 879	0,1	1 980	0,7	2 428	0,8
	10	5 351	0,8	2 905	0,9	2 007	1,4	2 446	0,7
	11	5 397	0,9	2 935	1,0	2 032	1,2	2 462	0,7
	12	5 425	0,5	2 954	0,7	2 050	0,9	2 471	0,3
2019	1	5 441	0,3	2 963	0,3	2 062	0,6	2 478	0,3
	2	5 448	0,1	2 964	0,0	2 068	0,3	2 484	0,2
	3	5 441	-0,1	2 961	-0,1	2 065	-0,1	2 480	-0,1
	4	5 435	-0,1	2 962	0,0	2 058	-0,3	2 473	-0,3
	5	5 422	-0,2	2 956	-0,2	2 047	-0,5	2 467	-0,3
	6	5 375	-0,9	2 925	-1,0	2 026	-1,0	2 450	-0,7
	7	5 319	-1,0	2 891	-1,2	2 004	-1,1	2 428	-0,9
	8	5 282	-0,7	2 867	-0,8	1 986	-0,9	2 415	-0,5
	9	5 237	-0,9	2 833	-1,2	1 963	-1,2	2 404	-0,5
	10	5 173	-1,2	2 793	-1,4	1 934	-1,5	2 380	-1,0
	11	5 105	-1,3	2 762	-1,1	1 906	-1,5	2 343	-1,6
	12	5 048	-1,1	2 742	-0,7	1 887	-1,0	2 306	-1,5
2020	1	4 997	-1,0	2 719	-0,9	1 877	-0,5	2 279	-1,2
	2	4 953	-0,9	2 694	-0,9	1 875	-0,1	2 258	-0,9

**Trend figures of import<sup>1</sup>**

Year	Month	Total	Change	EU total	Change	Euro zone	Change	External trade	Change
2018	1	5 428		3 113		2 091		2 314	
	2	5 454	0,5	3 121	0,2	2 095	0,2	2 333	0,8
	3	5 472	0,3	3 133	0,4	2 100	0,2	2 339	0,2
	4	5 498	0,5	3 146	0,4	2 105	0,2	2 352	0,6
	5	5 531	0,6	3 159	0,4	2 109	0,2	2 371	0,8
	6	5 560	0,5	3 170	0,3	2 112	0,1	2 390	0,8
	7	5 582	0,4	3 172	0,1	2 109	-0,1	2 409	0,8
	8	5 590	0,1	3 172	-0,0	2 106	-0,1	2 418	0,4
	9	5 585	-0,1	3 178	0,2	2 106	0,0	2 406	-0,5
	10	5 580	-0,1	3 192	0,4	2 110	0,2	2 387	-0,8
	11	5 578	-0,0	3 201	0,3	2 116	0,3	2 377	-0,4
	12	5 561	-0,3	3 202	0,0	2 120	0,2	2 360	-0,7
2019	1	5 539	-0,4	3 204	0,1	2 125	0,2	2 335	-1,0
	2	5 533	-0,1	3 211	0,2	2 133	0,4	2 322	-0,6
	3	5 546	0,2	3 218	0,2	2 142	0,4	2 328	0,2
	4	5 566	0,4	3 221	0,1	2 146	0,2	2 346	0,8
	5	5 570	0,1	3 213	-0,2	2 141	-0,2	2 357	0,5
	6	5 554	-0,3	3 200	-0,4	2 129	-0,6	2 354	-0,1
	7	5 533	-0,4	3 191	-0,3	2 119	-0,5	2 341	-0,5
	8	5 502	-0,5	3 184	-0,2	2 113	-0,3	2 319	-1,0
	9	5 461	-0,7	3 171	-0,4	2 109	-0,2	2 291	-1,2
	10	5 426	-0,6	3 152	-0,6	2 101	-0,4	2 274	-0,7
	11	5 414	-0,2	3 138	-0,5	2 096	-0,2	2 276	0,1
	12	5 423	0,2	3 134	-0,1	2 100	0,2	2 289	0,6
2020	1	5 438	0,3	3 145	0,4	2 111	0,6	2 293	0,2
	2	5 456	0,3	3 165	0,6	2 124	0,6	2 291	-0,1

\*\* GB trade transferred from EU-countries to external trade from 02/2020 publication, also retrospectively

Figure 4. Exports 2018-2020 (original, seasonally adjusted and trend)\*\*

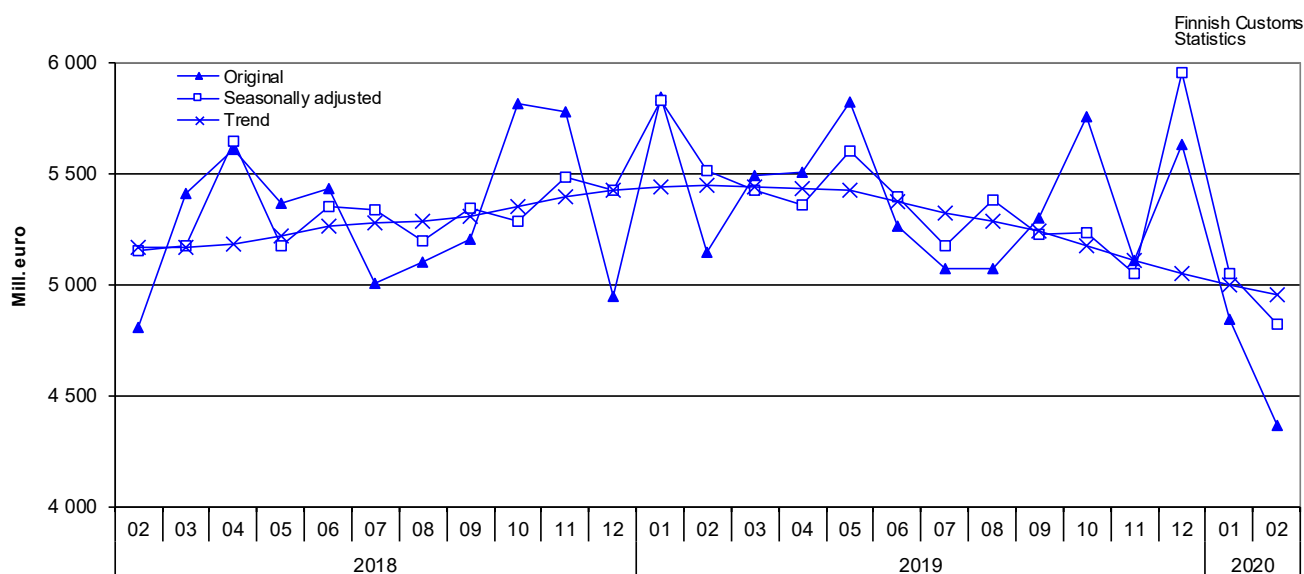
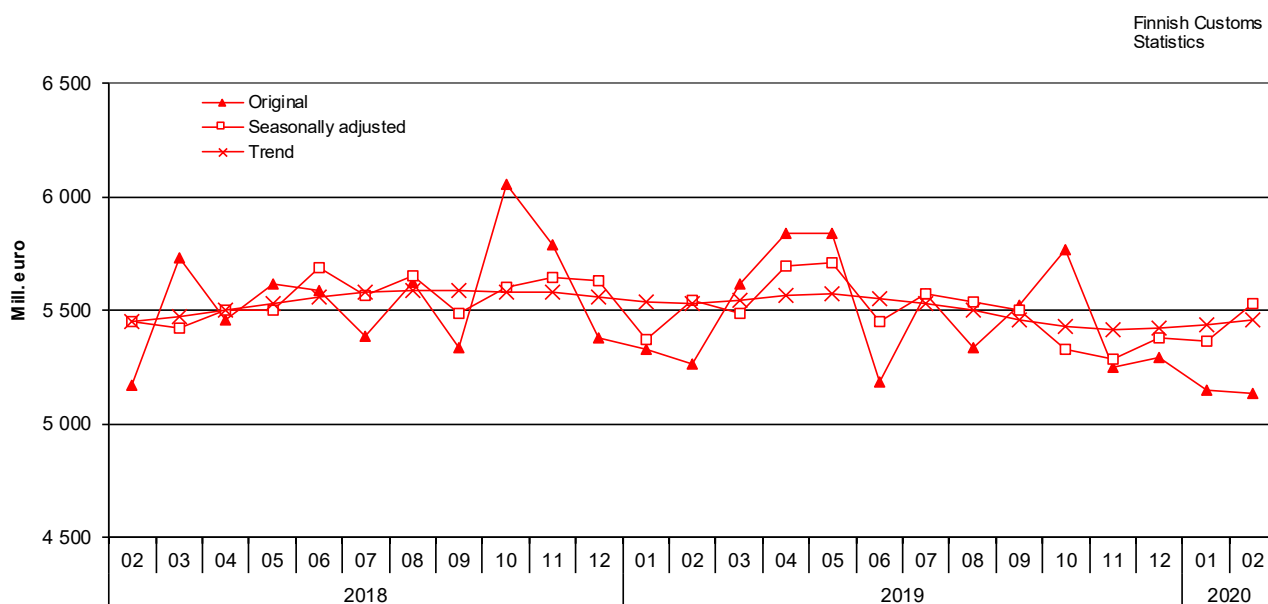


Figure 5. Imports 2018-2020 (original, seasonally adjusted and trend)\*\*



\*\* GB trade transferred from EU-countries to external trade from 02/2020 publication, also retrospectively

Seasonal adjustment is a statistical technique to remove the effects of seasonal calendar influences operating on a series. Irregular fluctuations in the trend series have also been filtered off. The TRAMO/SEATS method recommended by Eurostat has been implemented in the seasonal adjustment of the foreign trade series. Starting July 2019 a new version of Demetra, the JDemetra+2.2.2, has been implemented in calculating seasonal adjustments. Data starting year 2010 is now used in calculation. The time series used is over seven years and in accordance with the recommendations. Because of the program updating and the shorter time series used seasonal adjustments and trend series for previous months have been revised.



Preliminary statistics on the international trade in goods  
2020:E02EN, 7.4.2020

Inquiries:

Telasuo, Christina

tfn 040 332 1828

Riikonen, Johanna

tfn 040 332 1824

E-mail: [forename.surname@tulli.fi](mailto:forename.surname@tulli.fi)

Monthly statistics for February 2020 is published 30.4.2020.

More specific data on countries and goods, as well as statistics on logistics, are available free of charge via the Uljas statistical database: [uljas.tulli.fi](https://uljas.tulli.fi).

ISSN 1796-0479 = Official Statistics of Finland (pdf)

ISSN 2670-0565 = Preliminary statistics on the international trade in goods (web publication)

Contact information:

Finnish Customs  
Statistics

Opastinsilta 12  
PO Box 512  
FI-00101 Helsinki

Exchange + 358 295 5200  
Statistics service + 358 295 52335  
[statistics@tulli.fi](mailto:statistics@tulli.fi)