

**TULLI**  
TULL · CUSTOMS

# Import message exchange

Informational event for software developers 11.12.2019

# Message exchange guide



## Guide for message exchange

Details regarding the message exchange between economic operators and Customs.

The first version (0.6) of the import message exchange guide only has a list of messages; description will soon be completed, changes possible

### GUIDE FOR MESSAGE EXCHANGE

General information

Messages

Use cases

General information

Messages

#### Messages from economic operator to Customs

Amendment request (FI413A)

Invalidation request (FI414A)

Import declaration (FI415A)

The first version only has import use cases, later we will add use cases of customs warehousing among others

# General information on message exchange

- A customs declaration can be submitted 30 days prior to the presentation of goods if the MRN references of the previous declaration (e.g. transit) are available
- Change: clearance decision and invoice separate

# Messages from the declarant to Customs

## Customs declarations when placing goods under the procedure

- Import declaration, 415
- When the holder of authorisation for EIR presentation notification places goods under a customs procedure with an entry in the records, 475
- Declaration for goods of low value (max 150 euros), 485

## Amendment request for declaration

- Amendment request, 413 (either amendment or request for correction)
- Amendment request for presentation notification, 473
- Amendment request (reduced dataset H7) 483

## Other

- Additional information response, 453
- Free-form contact, 439
- Invalidation request, 414
- Only for customs warehousing: discharge notification, 488

# Messages from Customs to the declarant

- Registration notification, 426
- Rejection notification, 416
- Acceptance notification, 428
- Request for additional information, 452
- Error notification, 444
- Customs' control notification, 450
- Movement permit, 445
- Customs' notification, 470
- Release notification, 429
- Release rejection message, 451
- Storage release notification, 419
- Notification of customs debt, 468
- Amendment notification, 403
- Amendment rejection notification, 405
- Invalidation notification, 410
- Invalidation rejection notification, 448

# Use case example: correct standard declaration

Economic operator	Customs
Customs declaration	→
	← Acceptance notification
	← Release notification
	← Notification of customs debt

# Use case example: Customs notices an error

Customs declaration	→
	← Acceptance notification
	← Error notification
Amendment request	→
	← Registration notification
	← Release notification
	← Notification of customs debt

Note that you only reply to an error message or request for additional information by Customs with a message (at the same time referring to the 'Correlation of request'-ID)

# Use case example: Periodic clearance of three items with error-free declarations

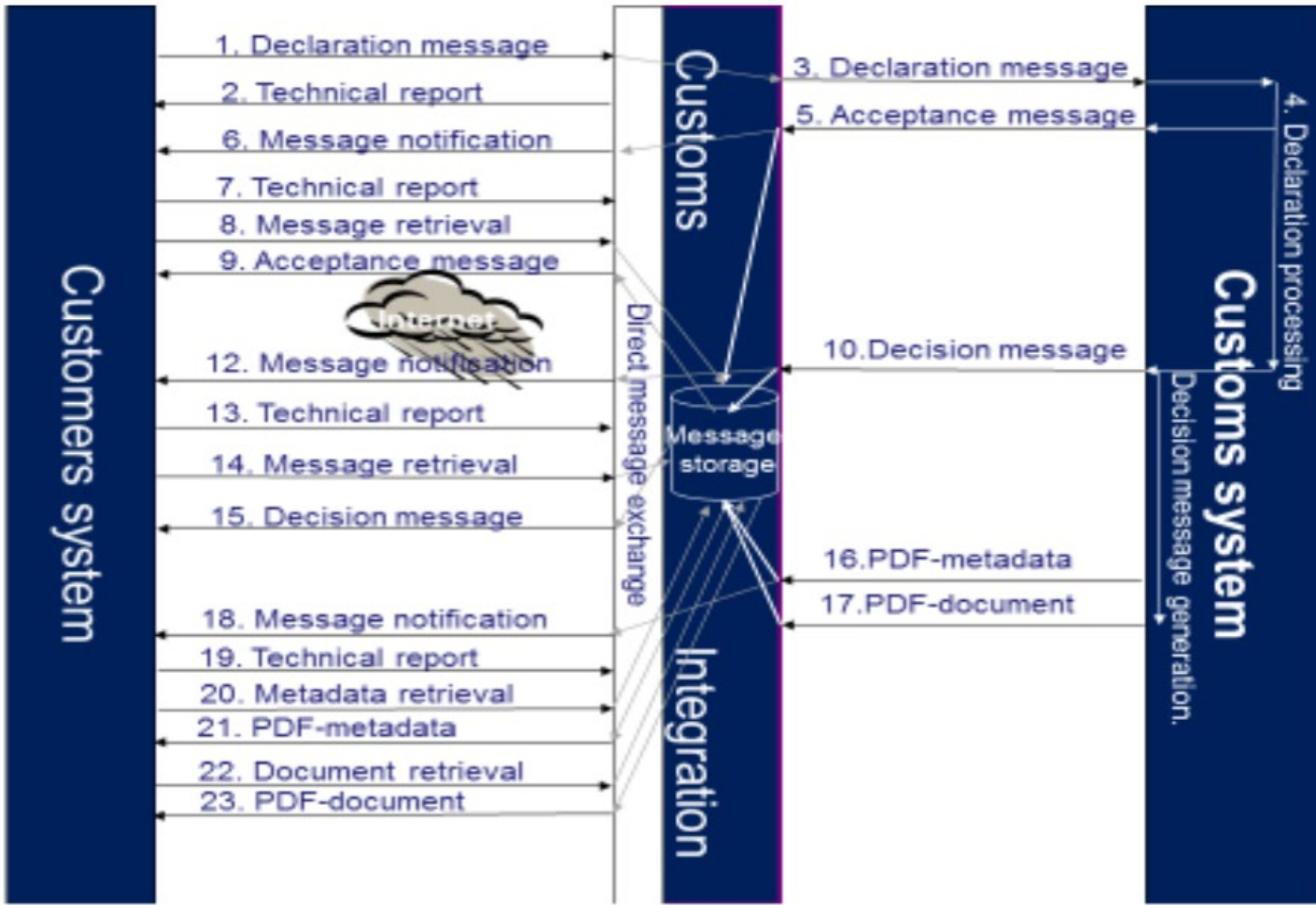
Economic operator	Customs
Customs declaration	→
	← Acceptance notification
	← Release notification
Customs declaration	→
	← Acceptance notification
	← Release notification
Customs declaration	→
	← Acceptance notification
	← Release notification
Customs declaration	→
	← Registration notification
	← Notification of customs debt

# PDF documents retrieved separately as in customs warehousing

- Retrieval of PDF printouts is described on the Customs website in the documents found via the links on the [main page of message exchange](#) :
  - [Introduction to message exchange with Finnish Customs](#)
    - Chapter 2.1.5: Functions and processes when documents are retrieved from Customs new customs clearance system (UTU) applications
  - [Direct message exchange technical guidebook](#)
    - Chapter 6.3: PDF document's metadata



# Direct message exchange decision retrieval process in the sequence diagram



# PDF documents, i.e. UTU import printouts

- Decisions:
  - LUO Release decision
  - ??? Customs clearance decision
  - ??? Invoice
  - OIK Amendment decision
  - OHY Amendment request rejection decision
  - MIT Invalidation decision
  - MHY Invalidation request rejection decision
  - ??? RAU Cancellation decision
- Other Printouts:
  - LIS Request for additional information
  - ILM Customs notification
  - TAR Control notification
  - VIR Error list