

The following list contains the decisions taken by the Harmonized System Committee (73rd Session – March 2024) concerning amendments to the Harmonized System Compendium of Classification Opinions, applicable as of 1 June 2024. This publication will be updated regularly.

The Harmonized System Compendium of Classification Opinions (FIFTH EDITION 2022) is published by WCO and consists of a numerical list, set out in the order of headings and subheadings of the Harmonized Commodity Description and Coding System, of the Classification Opinions adopted by WCO. Within any Harmonized System heading or subheading the Classification Opinions are listed in chronological order. The Compendium is available as a bilingual publication in English and French, the two official languages of the WCO, and can be ordered directly (see “Online Services” > “Bookshop” on this Web site).

The amendments listed below are reproduced in the order of the current pages concerned and will be incorporated into the aforementioned WCO publication in due time by replacing the pages affected by the amendments made.

Advice

Parties seeking to import or export merchandise covered by a decision are advised to verify the implementation of the decision by the importing or exporting country, as the case may be.

o
o o

AMENDMENT TO THE COMPENDIUM OF CLASSIFICATION OPINIONS

Page II/2.

Insert the following Classification Opinion:

- “1201.90 1. Frozen shelled immature soya beans (of the species *Glycine max.*),** often referred to as mukimame. They are green and have an oblong shape measuring around 1 to 2 cm long. They are blanched before freezing but not salted.

Application of GIRs 1 and 6.”

Page II/2.

Insert the following Classification Opinion :

- “1404.90 1. Cocopeat brick**, a by-product made from coconut husks not containing nutrients for plants.

The product is a lightweight block of compressed cocopeat used as a growing medium for a variety of gardening applications.

Application of GIRs 1 and 6.



Page IV/30c.

Insert the following Classification Opinion :

- “2202.10 1. Non-aerated beverage**, with a fruit juice content of 21 %, put up for retail sale. It comprises the following ingredients: water, sugar, various fruit juices from concentrates (grape, lemon, blackcurrant, apple, cherry, dragon fruit), natural flavouring, colouring (caramel E150d) and ginseng extract.

Application of GIRs 1 and 6.”

Page IV/31c.

Insert the following Classification Opinion:

“2203.00 1. **Fruit beer** (cherry beer), with an alcoholic strength by volume of 3.5 % vol, obtained through a brewing process of double fermentation described as follows:

- first fermentation of a mixture of water, malted barley and malted wheat;
- addition of other ingredients (fruit juice, sugar, flavourings, etc.);
- second fermentation;
- bottling and then pasteurisation.

The ingredients are as follows : water (79 %), malted barley and malted wheat (11 %), cherry juice (5 %), sugar (4 %), flavourings and antioxidants including hops and sweetener (1 %). The organoleptic characteristics (taste, smell, etc.) are of beer.

Application of GIR 1.”

Page IV/35.

Insert the following Classification Opinions:

“2309.90 9. **Product** consisting of a mixture of 99 % defatted soybean meal and 1 % cornmeal (also known as *maíz molido*).

Application of GIRs 1 and 6.”

“2309.90 10. **Product** consisting of a mixture of 95 % defatted soybean meal and 5 % safflower bran meal.

Application of GIRs 1 and 6.”

Page V/1.

Insert the following Classification Opinions:

“2505.10 1. **Natural sands** containing 99.5 % silicon dioxide.

Application of GIRs 1 and 6.”

“2505.10 2. **Natural sands** containing 95 % silicon dioxide.

Application of GIRs 1 and 6.”

“2505.90 1. **Natural sands** containing 90 % silicon dioxide.

Application of GIRs 1 and 6.”

“2505.90 2. Natural sands containing 80 % silicon dioxide.

Application of GIRs 1 and 6.”

Page VI/1.

Insert the following Classification Opinion:

“2811.22 2. Highly dispersed silicon dioxide in the form of a white, odourless powder, packaged in a labelled container, with a net content of 25 g.

The product is intended for oral intake as an aqueous suspension. According to the label indications, it is used as a multifunctional enterosorbent that binds harmful substances such as allergens, toxins, bacteria and viruses, and removes them from the gastrointestinal tract. The product is claimed to be effective in the treatment of diarrhea, poisoning, allergies, toxicosis and hangover syndrome, and in cleansing the body. It is not disintegrated in the gastrointestinal tract, nor is it metabolised. The average daily dose for adults is 0.1 to 0.2 g per 1 kg of body weight, divided into three equal portions.

Application of GIRs 1 and 6.”

Page VI/20.

Insert the following Classification Opinion:

~~**“3307.90 4. Facial wipes**, packaged for retail sale containing 60 rectangular sheets of nonwovens (10 cm x 12 cm), impregnated with water (76.8 %), moisturizing agents (dipropylene glycol (DPG) (16 %), sodium hyaluronate (2.2 %), jojoba oil (2 %)) and organic surface active agents as emulsifier (PEG-6 caprylic/capric glycerides and polysorbate 20 (3 %)). They are intended to be used for the care of the facial skin such as removing make-up, cleansing, toning, soothing and hydrating/moisturizing in one step.~~

~~**Application of GIRs 1 (Note 2 to Section VI and Note 4 to Chapter 33) and 6.”**~~

Page VI/24.

Insert the following Classification Opinions:

- “3602.00 3. Ammonium nitrate in gel form** used in the process for producing explosives for mines and quarries.

Analysis of a sample shows that it contains ammonium nitrate (69 %), calcium/magnesium carbonate (0.0125 %), sulphates (0.4 %), chlorides (0.014 %) and organic matter (6 %), and it has a pH of 4.93.

Application of GIR 1.”

- “3602.00 4. Ammonium nitrate in gel form** used in the process for producing explosives for mines and quarries.

Analysis of a sample shows that it contains ammonium nitrate (78 %), calcium/magnesium carbonate (0.0110 %), sulphates (0.2 %), chlorides (0.0053 %) and organic matter (4.5 %), and it has a pH of 4.7.

Application of GIR 1.”

Page VI/34.

Insert the following Classification Opinion:

- “3824.40 1. Chemical product** consisting of sodium polynaphthalene sulphonate (79 to 89 %) containing water, methanal and sodium sulphonate as a result of the manufacturing process. It is presented in powder form, used as a superplasticizer admixture in the preparation of concrete.

The product does not reduce the surface tension of water to 4.5×10^{-2} N/m (45 dyne/cm) or less when mixed with water at a concentration of 0.5 % at 20 °C and left to stand for one hour at the same temperature and it has an average of less than 5 monomer units.

Application of GIRs 1 and 6.”

Page VII/15

Classification Opinion “3926.40/1”

Insert before the photo “*See also Opinion 9505.10/1*”

Page XV/1a.

Insert the following Classification Opinion:

- “7222.30 1. Solid products made by free forging of stainless steel,** shaped into rectangular blocks and worked by milling to remove the surface imperfections such as oxidation scale and decarbonised layers and to meet dimensional and form tolerances (width, thickness, straightness, etc.). The products are intended for use in the manufacture of plastic moulding tools. They can be split (horizontally or vertically or both) into

blanks with specific sizes to meet the end-user's requirements. They do not require any further hot working by means of hot rolling and/or forging.

Dimensions: 203 mm x 610 mm x 3155 mm and 114 mm x 610 mm x 3155 mm.

Chemical data: C : 0.35 – 0.42 %, Si : 0.6 – 1.4 %, Mn : 0.2 – 0.8 %, Cr : 13.1 – 14.1 %, V : 0.1 – 0.4 %, S : < 0.005 %, P : < 0.030 %.

Application of GIRs 1 (Note 1 (e) and 1 (m) to Chapter 72) and 6.



Page XVI/21.

Insert the following Classification Opinions:

- “8428.90** **3. Indoor serving robot**, designed to transport food within a restaurant. It is equipped with sensors for recognising and avoiding obstacles, three trays for dishes, a touch screen display, and an electric motor-driven base fitted with 6 castors.

Specifications:

- dimensions (W x H x D): 48 x 118 x 48 cm;
- weight: 50 kg;
- loading capacity per tray: 10 kg;
- speed: 0.8 m/s (max. 1.5 m/s).

Application of GIRs 1 and 6.



- “8428.90** 4. **Outdoor delivery robot**, designed to transport food or beverages. It is equipped with a sensor for recognising and avoiding obstacles, Global Positioning System (GPS), two hatches, and an electric motor-driven base fitted with 6 wheels. It is capable of both autonomous driving and being driven by remote-control.

Specifications:

- hatch size : 270 x 200 x 240 mm;
- load capacity : 15 kg;
- maximum speed : 12 km/h.

Application of GIRs 1 and 6.



Page XVI/38.

Insert the following Classification Opinion:

- “8467.21** 1. **Handheld electric screwdriver drill**, designed for both drilling and tightening and loosening screws, consisting of a self-contained electric motor, a tool holder (chuck), an electric accumulator and operating

Copyright © 2024 World Customs Organization. All rights reserved. Requests and inquiries concerning translation, reproduction and adaptation rights should be addressed to copyright@wcoomd.org.

controls (for example, torque controller, speed selector, forward/reverse switch, and speed controller), all elements being accommodated in a single housing.

Application of GIRs 1 and 6.”

Page XVI/76

Classification Opinion “8517.62/20”

Insert before the photos “*See also Opinion 8518.30/1.*”

Page XVI/89.

Insert the following Classification Opinion:

- “8518.30** 1. **Bluetooth® wireless earphones** with a built-in microphone, designed to pair with a host device, put up in a set for retail sale with charging case, charging cable and instruction manual. The earphones have functions to control audio file playback and to direct the host device to answer, reject or hang-up calls.

Application of GIRs 1 (Note 3 to Section XVI), 3 (b) and 6.

See also Opinion 8517.62/20.



Page XVI/108.

Insert the following Classification Opinion:

- “8528.59** 1. **Broadcast monitor**, comprising two 7-inch (18 cm) LCD panels combined with control buttons, tally lights, input/output connectors, a power connector, and a fan in the same housing. For each LCD panel,

there are two BNC connectors for SDI input, one D-sub 15 pin connector for GPI signal input and one BNC connector for SDI output.

The monitor is capable of receiving a signal from a video camera or a recorder through co-axial cables and displaying images on the panels, but not capable of receiving or displaying signals or data from an automatic data processing (ADP) machine. It can encode/decode red (R), green (G) and blue (B) signals. It is designed for use in a studio of a television station and a broadcast van. It incorporates tilt adjustment mechanisms and does not incorporate a channel selector or video tuner.

Specifications:

- aspect Ratio : 15:9;
- resolution : 800 × 480 pixels;
- viewing angle : 170° horizontal, 170° vertical;
- video input signal : 3G/HD/SD Serial Digital Interface (SDI).

Application of GIRs 1 and 6.



Page XVI/109.

Insert the following Classification Opinion :

- “8528.62 3. Laser projector**, designed to be used in cinemas or theatres, consisting of a projector main unit and an external cooler which are interconnected via hoses. The main unit includes a media server, which is equipped with HDMI and RJ45 (network port) inputs. The product does not include a channel selector or TV tuner.

The projector may be connected to an automatic data processing (ADP) machine via HDMI or RJ45 (network port) connection. While it is primarily intended for projecting films stored as files on the built-in media server onto a screen, it can also project images corresponding to video signals received from an ADP machine in real time.

Specifications:

- resolution: 4,096 x 2,160 pixels;
- brightness: 52,000 lm;
- contrast ratio: 2,000:1.

Application of GIRs 1 and 6.



Main unit (the external cooler is not included in the picture)".

Page XVI/114.

Insert the following Classification Opinion:

- “8535.90** **2. Transformer bushings**, for a voltage exceeding 1,000 V, for the electrical connection of the transformer winding to an overhead line, consisting essentially of:
- an electric conductor;
 - the main electrical insulation made from resin impregnated paper;
 - exterior insulation made from porcelain or plastics;
 - couplings/connectors (transformer side and open air side); and
 - a mounting flange.

Application of GIRs 1 (Note 2 (a) to Section XVI) and 6.



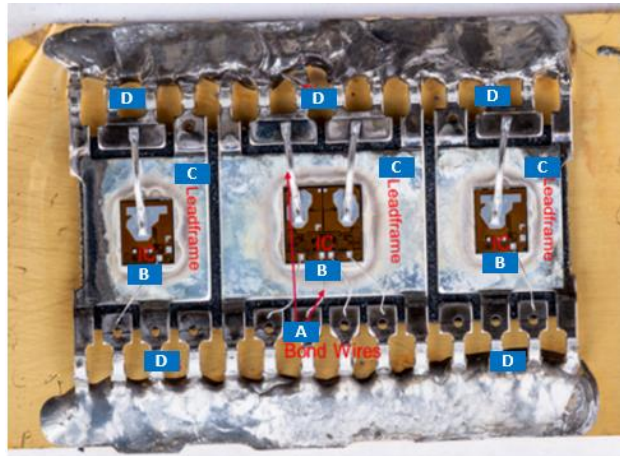
Page XVI/125.

Insert the following Classification Opinions:

- “8542.39** **5. Integrated circuit (IC)** that combines four switches integrated on three dies in one package. All four switches are monolithic integrated circuits and manufactured in semiconductor technology but not electrically interconnected. No other active or passive circuit elements are assembled in the device.

The switches are geared to drive electric motors but can also be used as single independent switches.

Application of GIRs 1 (Note 12 (b) (iii) to Chapter 85) and 6.



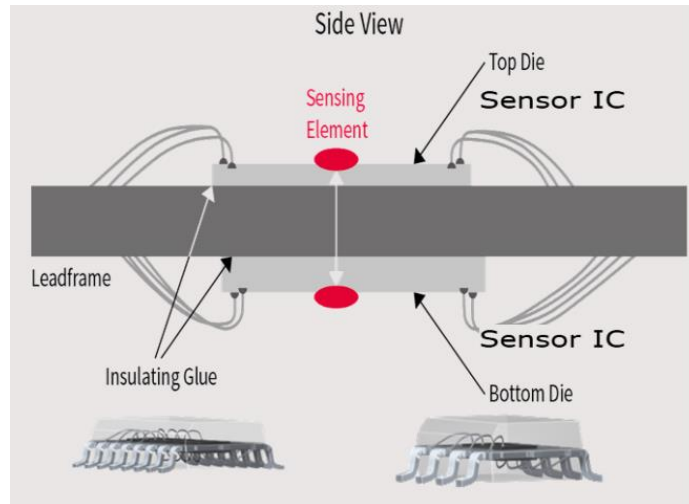
- A. Bond wire : metal wire provides interconnection between the IC and I/O pins
- B. IC : integrated Circuit made of semiconductor material
- C. Leadframe : system carrier for semiconductor dies
- D. Pins: input and output of electrical signals to the IC and outgoing”.

- “8542.39 6. **Dual-die Hall sensor integrated circuit (IC)**, consisting of two redundant sensors in one package, in which two sensing elements (not discrete components) are placed in the same lateral position.

The two sensors are monolithic integrated circuits and manufactured in semiconductor technology but not electrically interconnected. All components are integrated at the same time when dies are manufactured, and no other active or passive circuit elements are assembled in the devices.

It is designed for angle and position detection.

Application of GIRs 1 (Note 12 (b) (iii) to Chapter 85) and 6.



Page XX/25.

Insert the following Classification Opinion:

- “9505.10** 1. **Festive article of plastics in the shape of Santa Claus**, illuminated from the inside by 104 LEDs, for outdoor use.

It measures 55 cm in height, 28.5 cm in width and 25.5 cm in depth. A power cord connects the product to a transformer of an effect of 3.6 W and an output voltage of 24 V. The effect per light source is 0.03 W.

Application of GIRs 1 and 6.

See also Opinion 3926.40/1.

