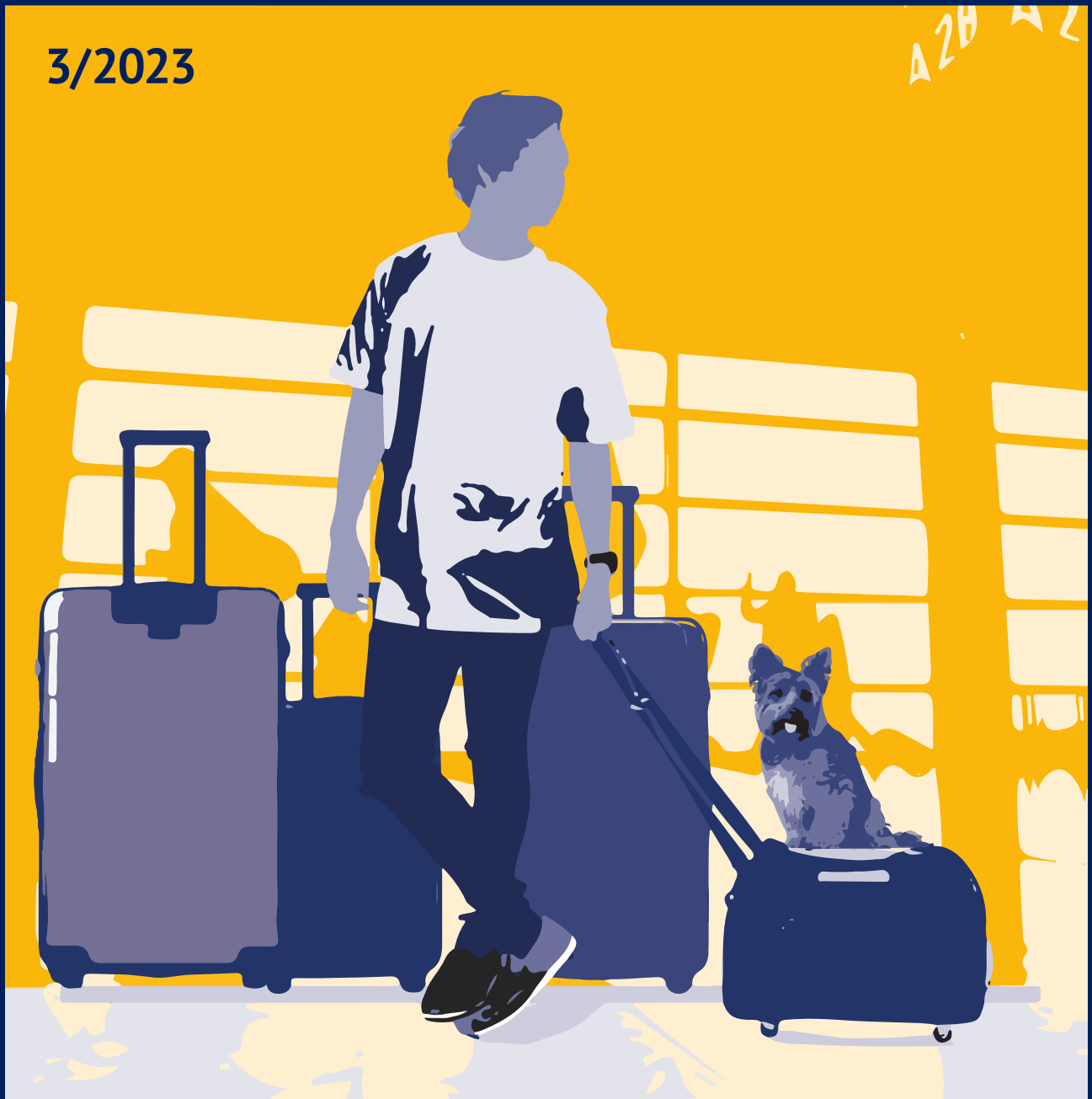


# Customs advice for travellers



# Table of Contents

Choose the correct customs lane .....	3
Customs controls of passengers .....	3
Check what goods you are allowed to bring to Finland based on the country you arriving from .....	4
EUR 10 000 € or more in cash.....	5
Endangered species and derivative products (CITES) .....	5
Pets .....	6
Medicines .....	7
Milk, meat, fish and foods for pets .....	8
Plants, seeds, vegetables, root vegetables, fruits and berries .....	9
Alcohol .....	10
Tobacco products, snus and nicotine fluids.....	12
Firearms and dangerous objects .....	14
Fuel .....	15

This brochure contains the most common instructions, prohibitions and restrictions that apply to goods brought in by travellers who arrive in Finland. Please note that the brochure does not contain any information about the effects of the sanctions. Some of the restrictions may change quickly, so be sure to check the up-to-date provisions on the Finnish Customs website **tulli.fi**.

## Choose the correct customs lane

When you arrive at Customs in Finland, choose the green, blue or red channel. Your choice of channel is a customs declaration.

### Choose the

- **green channel** if you have nothing to declare or to notify Customs
- **red channel** if you are carrying goods that must be cleared or declared, or if you have any questions to Customs
- **blue channel** when you arrive by air from the EU territory and you have nothing to declare or to notify Customs of.

If you are carrying excess goods that are under import restriction or any goods under a complete import prohibition, you can hand them over to Customs on your own initiative. In such cases, choose the red channel.

If you choose the green or blue channel, but customs officers find goods in your possession that are subject to tax or under import restrictions or prohibitions, then Customs can detain or seize such goods. You may have pay double tax on the goods or may be suspected of a customs offence.

You must present the goods to Customs and personally repack the goods after the inspection. You may also have to present proof of ID or some other travel document at Customs' request.

## Customs controls of passengers

Customs enforces prohibitions and restrictions concerning goods, and oversees transports of goods. When travellers are arriving in or departing from Finland, Customs has the right to stop them, ask them questions and inspect them. Questionings and inspections are based on risk assessments.

In a customs inspection, a traveller's luggage and outer clothing are inspected. In a more thorough inspection, Customs can ask the traveller to undress. The thorough inspection of the traveller is carried out in a separate inspection facility, where the person performing the inspection and possibly a witness are present.

Assisting us in customs inspections, we have detector dogs trained to detect narcotics, cash, cigarettes and explosives among other things.

## Check what goods you are allowed to bring to Finland based on the country you arriving from

EU member states have territories that fall outside the EU fiscal territory (for example, the Åland Islands and the Canary Islands) and the EU customs territory (for example, Ceuta and Melilla in Spain's case). When you are arriving in Finland from these territories, your goods are partly under the same restrictions as when you are arriving from outside the EU. If you are travelling to Finland from the European Economic Area (EEA; EU countries + Norway, Switzerland, Liechtenstein and Northern Ireland), restrictions on your goods are partly the same as with travellers arriving from the territory of the EU.

**See** the list of countries within the fiscal and customs territories of the EU:  
[tulli.fi > EU customs and fiscal territory](#)

### Travelling from the EU territory

You can import goods you have purchased for your personal use from the customs and fiscal territories of the EU without having to pay customs duty or tax. However, the importation of certain goods is restricted or prohibited. For example, restrictions and prohibitions apply to the importation of medicines, tobacco and certain food-stuffs.

### From outside the EU

If you arrive in Finland by car or train from outside the EU, you can bring in goods worth a maximum of 300 euros exempt from duty and taxes. If you arrive in Finland by air or by sea, you may bring in purchases worth at most 430 euros without having to pay taxes or duties.

The right to import goods without paying customs duty and tax is personal, and the value of a single purchase cannot be divided between several persons. Taxes are determined on the basis of the price paid for the goods. If the import value threshold is exceeded, taxes are paid on the entire purchase price of the goods, not just on the percentage of value that exceeds the threshold. Upon request, you must provide reliable proof of the price paid for the goods, for example with a receipt.


However, the value and quantity limits are not applied on alcohol or alcoholic beverages, cigarettes, cigarillos, cigars, pipe tobacco and cigarette tobacco or fuels for motor vehicles. Restrictions on time and quantities apply for tax-exempt imports of the said goods from outside the EU.

You can import goods as exempt from customs duty and tax from outside the customs and fiscal territories of the EU when

- the value or quantity limits on goods are not exceeded **and**
- the import is occasional **and**
- the goods are intended for the traveller's personal use or to be used by their family, or given away as a gift **and**
- due to their nature and quantity, the goods cannot be considered commercial imports.

Personal belongings that you need during your trip are also exempt from customs duty and tax.

In other cases, it is considered that your purpose is to import goods for sale, which means that import duties and tax must be paid for them.

 Please note that the importation of illegally copied music or film recordings is prohibited.

**More information:** [tulli.fi](https://tulli.fi) > Bringing in goods



## EUR 10 000 € or more in cash

Bringing cash to Finland is not prohibited or restricted in any way. However, you must submit a written customs declaration on any funds exceeding 10 000 euros. When you arrive in Finland from outside the EU, declare your funds to Customs if you carrying cash in excess of 10 000 in euros or any other currency.



## Endangered species and derivative products (CITES)

CITES products comprise endangered animals and plants, as well as their parts and derivatives. Their importation to Finland is either prohibited or subject to licence from the Finnish Environment Institute. You must have your licence with you when you arrive in Finland, and you must present it at Customs. Be sure to apply for a licence well in advance. You can import CITES products only through specific border crossing points.

The Finnish Environment Institute has more information on CITES products and importing them.

**More information:** [tulli.fi](https://tulli.fi) > Endangered species



You can only bring your dog, cat or ferret to Finland if you do not intend to sell or hand over the animal to another owner. You must be able to present certain documents and certificates for these pets.

In order for the importation of pets not to be regarded as commercial, there are certain restrictions on the number of pets and how they should travel.

**More information:** [ruokavirasto.fi](http://ruokavirasto.fi)

## From the EU territory

If you are bringing a dog, cat or ferret to Finland, you do not need to submit a customs declaration. However, your pet must carry a tag for identification, a rabies vaccination certificate, and a valid pet passport. If you are requested, you must be able to present the documents to Customs. For dogs, a certificate on treatment against echinococcosis is also required.

## From outside the EU

If you are bringing a dog, cat or ferret, then Customs or a border veterinarian will inspect the animal's ID tagging and documentation upon entry to Finland. This is why importing a pet to Finland is possible only through specific border crossing points.

**See the list of approved border crossing points:** [tulli.fi](http://tulli.fi) > Travelling with your pet.

Your pet must be vaccinated against rabies. Bringing unvaccinated dogs, cats and ferrets to Finland is prohibited. Before vaccination, your pet must be tagged for identification either with a microchip or a tattoo. The tattoo must predate 3 July 2011 and must be legible.

You must have the following certificates and documents concerning your pet:

- a pet passport or EU health certificate
- declaration from the owner that the pet is not imported for a commercial purpose
- original vaccination certificates or certified copies thereof
- antibody analysis result for a pet arriving from a country with a high risk of rabies
- entry on vaccination against echinococcosis (dogs).

The following are comparable to EU countries in terms of pet importation: Andorra, the Faroe Islands, Gibraltar, Greenland, Iceland, Liechtenstein, Monaco, Norway, San Marino, Switzerland and the Vatican City State.

**More information:** [ruokavirasto.fi](http://ruokavirasto.fi)



# Medicines

## From the EEA

For personal use, you may bring medicinal products to Finland (prescription medicines and over-the-counter medicines) in a quantity corresponding to no more than one year's use. At request, you must present your prescription for your medicines, a patient instruction sheet printed out by a doctor, or a summary of your prescriptions. You must carry out medicines in your hand luggage, and you must have the original medicine packages with you.

If you are carrying medicines classified as narcotics, you must check what certificates you need before you travel. When you enter Finland, you must present your documents to Customs.

You can import medicines for your pet if you bring them to Finland simultaneously with your pet. Your medicines must not contain any narcotic substances, and they must not be vaccines or other immunological veterinary medicinal products.

## From outside the EEA

For personal use, you may bring medicinal products to Finland (prescription medicines and over-the-counter medicines) in a quantity corresponding to no more than three months' use. At request, you must present your prescription for your medicines, a patient instruction sheet printed out by a doctor, or a summary of your prescriptions. You must carry out medicines in your hand luggage, and you must have the original medicine packages with you.

If you are carrying medicines classified as narcotics, you must check what certificates you need before you travel. When you enter Finland, you must present your documents to Customs.

For your pet, you can bring medicines in a quantity that corresponds to no more than 30 days' use, provided that you bring them simultaneously with your pet. Your medicines must not contain any narcotic substances, and they must not be vaccines or other immunological veterinary medicinal products. When you arrive in Finland, you must present your pet, medicines and prescriptions at Customs.

**More information:** [tulli.fi](https://tulli.fi) > Medicines



# Milk, meat, fish and foods for pets

## From the EU territory

There are usually no restrictions on imports of foodstuffs from another EU country to Finland. However, there are restrictions on the importation of pork and wild boar from EU countries where African swine fever is found (for example Estonia, Latvia and Lithuania). From such EU countries, private persons can only bring in meat products containing pork or wild boar in packages labelled with an EU identification mark.

**More information:** [ruokavirasto.fi](http://ruokavirasto.fi)

## From outside the EU

The importation of milk, meat, dairy and meat products and pet foods from outside the EU is completely prohibited.

However, you can bring in milk and meat as well as dairy and meat products for personal use from Andorra, Iceland, Liechtenstein, Norway, San Marino and Switzerland, as long as the value of your imports does not exceed the limitations on imports exempted from tax and duty, and the quantity can be considered reasonable for personal consumption.

From outside the EU, you can bring in a maximum of 20 kilograms of fishery products (including fresh, dried, boiled, salted and smoked fish and certain crustaceans such as prawns, lobsters, dead clams and dead oysters) or one gutted fish irrespective of its weight. Weight restrictions do not apply to the importation of fish products from Andorra, Liechtenstein, Norway, San Marino, Switzerland, the Faroe Islands or Iceland.

You can import a maximum of 125 grams of caviar. You will need an EU CITES import permit for bringing in any larger quantities.

As for other animal-based products such as honey, live oysters, live clams and snails, you can import ten kilograms from the Faroe Islands and Greenland, and two kilograms from elsewhere outside the EU.

From outside the EU, you can also import milk powder or food for small children, as well as special foodstuffs needed for medical reasons, as long as they do not require cooling before use. You can also import special food that keeps for a long time for a pet that travels with you. You can import a total of two kilograms of these products. From the Faroe Islands and Greenland, you can import a total of 10 kilograms of these products. For importation, it is required that

- the product is a packaged brand product (not homemade) **and**
- the package is intact, unless it is currently being used.

**More information:** [tulli.fi](http://tulli.fi) > Foodstuffs





# Plants, seeds, vegetables, root vegetables, fruits and berries

## From the EU territory, Switzerland and Liechtenstein

You may bring in most species of plants, seeds, fruits and vegetables to Finland for personal use.

If you bring in seed potatoes or host plants of fire blight, you need a plant passport which shows that they were produced in areas free from plant pests.

If you arrive in Finland from the Canary Islands, Ceuta, Melilla, Guadeloupe, French Guyana, Martinique, Mayotte, Réunion, Saint Barthélemy or Saint Martin, you need a phytosanitary certificate for the plants and plant products. In practice, it is impossible for an ordinary traveller to obtain a phytosanitary certificate.

## From outside the EU

You cannot bring in most species of plants or plant products to Finland from outside the EU territory without a phytosanitary certificate. Please note that restrictions on plant products also apply to Norway and Iceland.

Without a phytosanitary certificate, you are not allowed to import the following from outside the EU:

- saplings, pot plants or house plants
- cuttings, grafts, tubers, rhizomes or any other seeds
- seeds for planting
- cut flowers or branches
- fresh fruit, berries, vegetables and root vegetables.

Some plants are completely prohibited from entering Finland from outside the EU. These items include many woody plants (e.g. coniferous plants, apple trees, pear trees, citrus trees) as well as soil.

However, you can bring in dried, frozen and preserved vegetables as well as fresh bananas, dates, durians, pineapples and coconuts. You do not need a phytosanitary certificate for importing these items.

**More information:** [ruokavirasto.fi](http://ruokavirasto.fi)

## Alcohol

Persons under the age of 18 are not allowed to bring in alcoholic beverages to Finland. Persons under the age of 20 are only allowed to bring in mild alcoholic beverages to Finland.


Spirits (more than 80% by volume) cannot be brought in without a permit.

### From the EU territory

From the fiscal territory of the EU, you are allowed to import alcoholic beverages exempt from tax for your personal use, for the use of your family or as gifts. You must transport your alcoholic beverages in the same vehicle as the one in which you arrive in Finland.

The Finnish Excise Duty Act sets the following guidelines for the importation of alcoholic beverages for personal use:

<b>beer</b> (over 0.5 %) Please note: Ciders and long drinks are not considered beer.	<b>110 litres</b>
<b>wine</b> for example red wine, white wine, rosé and sparkling wine, ciders and long drinks produced through fermentation, with no added ethyl alcohol.	<b>90 litres</b> Of these, not more than <b>60 litres</b> may comprise sparkling wine.
<b>intermediary products</b> (at most 22 %) for example liquor, vermouth, bitters, sherry	<b>20 litres</b>
<b>other alcoholic beverages</b> (over 1.2 % by volume and at most 80 %) vodka, gin, rum and other spirits, long drink beverages produced from ethyl alcohol	<b>10 litres</b>

 If you bring in alcoholic beverages in quantities that exceed the guidelines, you must be able to credibly prove that the products are meant for your personal use.

Importation of alcohol for sales purposes is always subject to tax and requires a permit.

## From outside the EU

From outside the fiscal territory of the EU, you are allowed to import a limited quantity of alcoholic beverages exempt from tax for your personal use, for the use of your family or as gifts.

<b>beer</b> (over 0.5 %)	<b>16 litres</b>
<b>AND</b>	
<b>still wine</b> red wine, white wine and rosé	<b>4 litres</b>

You can also bring the following for personal use as exempt from tax:

<b>spirits</b> (over 22 % and at most 80 %) vodka, gin, rum and other spirits	<b>1 litres</b>
<b>OR</b>	
<b>other alcoholic beverages</b> (at most 22 %) sparkling wine, long drink beverages, ciders, liquor, vermouth, bitters, sherry	<b>2 litres</b>

You can also combine strong spirits and other alcoholic beverages under 22 % by volume, as long as their total quantity is not exceeded. For example, you can bring in 0.5 litres of spirits exempt from tax (half of the allowed import quantity) and 1 litre of sparkling wine (half of the allowed import quantity). This rule does not apply to still wine or beer.

## Time limits for persons arriving from outside the EEA

When you arrive in Finland from outside the territory of the EEA (EU member states + Norway, Iceland, Liechtenstein and Northern Ireland) by means other than air traffic, there are time limits concerning importation of alcohol.

If you live in Finland, you can only import alcoholic beverages if your trip has lasted over 24 hours. If you live outside the European Economic Area (EEA), you may bring in alcoholic beverages only if you are staying in Finland for more than 72 hours. If you are only travelling through Finland, there are no time limits.

If you are travelling from the Åland Islands, there are no time limits for importing alcohol.



## Tobacco products, snus and nicotine fluids

A person under the age of 18 cannot bring in tobacco, snus, other tobacco products or nicotine liquids to Finland.

### From the EU territory

From the fiscal territory of the EU, you are allowed to bring in no more than the following quantities of tobacco products, when the unit packets do not carry the health warning images and texts in Finnish and Swedish:

- 200 cigarettes **and**
- 50 cigars **and**
- 100 cigarillos **and**
- 250 grams of roll-your-own tobacco, pipe tobacco or waterpipe tobacco **and**
- 200 dose units of other tobacco products or 250 grams of other loose tobacco products.

You are also allowed to bring in the following quantities of products, when the unit packets do not carry the health warning texts in Finnish and Swedish:

- no more than 10 ml of nicotine liquid in an electronic cigarette or a refill container **and**
- no more than 200 units of ready-rolled and 250 grams of loose herbal products for smoking

You can bring in these products for yourself, for your family or as a gift.

### Snus, chewing tobacco and nasal tobacco and certain nicotine-containing liquids

You are allowed to bring in

- no more than 1 000 grams in total of snus, chewing tobacco and nasal tobacco (snuff) in a calendar day **and**
- no more than 10 millilitres of nicotine-containing liquid (nicotine content exceeding 20 mg/ml or medicinal use) for use in electronic cigarettes.

You are allowed to bring in these products only for your own personal use. You are not allowed to bring in these products for your family or as a gift.

## From outside the EU

Traveller imports of tobacco products from outside the EU are restricted by the provisions on taxation as well as by the import prohibitions and restrictions set out in the Tobacco Act.

### Tax-free import allowances on tobacco products and nicotine liquids

You can bring in, free of tax, for yourself, for your family or as a gift

- 200 cigarettes **or**
- 50 cigars **or**
- 100 cigarillos (max. 3 g/each) **or**
- 250 grams of roll-your-own tobacco, pipe tobacco or waterpipe tobacco.

In addition to the products mentioned above, you can bring in, free of tax, for your own personal use, chewing tobacco, nasal tobacco, tobacco for oral use (snus) as well as nicotine liquid and certain nicotine-containing liquids, taking into account the value limits for traveller imports and the restrictions set out in the Tobacco Act.

Please note that if you wish to bring in products in quantities exceeding the tax-free allowance, you must pay the import taxes on the products. Imports are also restricted by the import prohibitions and restrictions set out in the Tobacco Act – these are described below.

### Import prohibitions and restrictions on tobacco products, herbal products for smoking and nicotine liquids, set out in the Tobacco Act

You can bring in no more than the following quantities of tobacco products, when the packets do not carry the required health warning images and texts in Finnish and Swedish:

- 200 cigarettes **and**
- 50 cigars **and**
- 100 cigarillos **and**
- 250 grams of roll-your-own tobacco, pipe tobacco or waterpipe tobacco **and**
- 200 dose units of other tobacco products or 250 grams of other loose tobacco products.

You are also allowed to bring in the following quantities of products, when the unit packets do not carry the health warning texts in Finnish and Swedish:

- no more than 10 ml of nicotine liquid in an electronic cigarette or a refill container **and**
- no more than 200 units of ready-rolled and 250 grams of loose herbal products for smoking

You can bring in these products for yourself, for your family or as a gift.

## Snus, chewing tobacco and nasal tobacco and certain nicotine-containing liquids

You are allowed to bring in

- no more than 1 000 grams in total of snus, chewing tobacco and nasal tobacco (snuff) in a calendar day **and**
- no more than 10 millilitres of nicotine-containing liquid (nicotine content exceeding 20 mg/ml or medicinal use) for use in electronic cigarettes.

You are allowed to bring in these products only for your own personal use. You are not allowed to bring in these products for your family or as a gift.

## Time limits for persons arriving from outside the EEA

When you arrive in Finland from outside the EEA (the EU countries + Norway, Iceland, Liechtenstein and Northern Ireland) by other means than by air, there are time limits for imports of tobacco products and nicotine liquids.

If you live in Finland, you can bring in tobacco products or nicotine liquids only if your trip has lasted more than 24 hours. However, from shorter trips you are allowed to bring in tobacco products and nicotine liquids if it is apparent that you obtained them in Finland before you left.

If you live outside the EEA, you may only bring in tobacco products or nicotine liquids if you are staying in Finland for longer than 72 hours. However, for shorter stays you are allowed to bring in tobacco products and nicotine liquids if the products are intended for your own personal use during your stay in Finland. If you are only travelling through Finland, there are no time limits.

**Read more:** [tulli.fi](https://tulli.fi) > Bringing back tobacco



## Firearms and dangerous objects

Restrictions apply to importation of firearms, certain parts of firearms, gas sprays and cartridges from outside the EU. Transporting these items through Finland to another country and moving them between EU member states is also restricted and subject to licence from the police authorities. When you arrive in Finland, you must present your licence and your items at Customs. You may also be required to pay tax and customs duty on your items.

Before you travel, you should check with the police authorities if you need a licence when you arrive in Finland. You should also check with the authorities of the embassy of your country of destination for the relevant regulations.

⚠ It is prohibited to bring dangerous object such as brass knuckles, switchblades, shurikens, edged weapons disguised as other objects, tasers, electric batons, spring batons and precision slingshots to Finland.

## Fuel

You are allowed to import the fuel inside the tank of your vehicle to Finland without paying tax or customs duty.

In addition, if you are arriving by passenger car or motorbike, you may bring in a maximum of 10 litres of fuel in a portable container if it is the same fuel as used in your vehicle. Bringing more fuel is subject to tax and customs duty.

However, the fuel contained in the fuel tank of a commercial vehicle (van or truck) is duty-free only up to 400 litres, and the fuel contained by the fuel tank of a special container up to 200 litres.